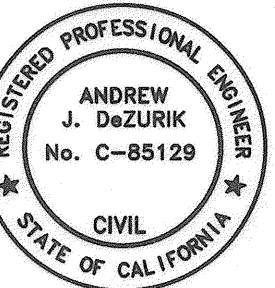


**CITY OF SANTA ROSA**  
IMPROVEMENT PLANS FOR

**MONTGOMERY DRIVE**  
**WATER SYSTEM IMPROVEMENTS**  
**MISSION BOULEVARD TO JACKSON DRIVE**

CONTRACT No. C001675

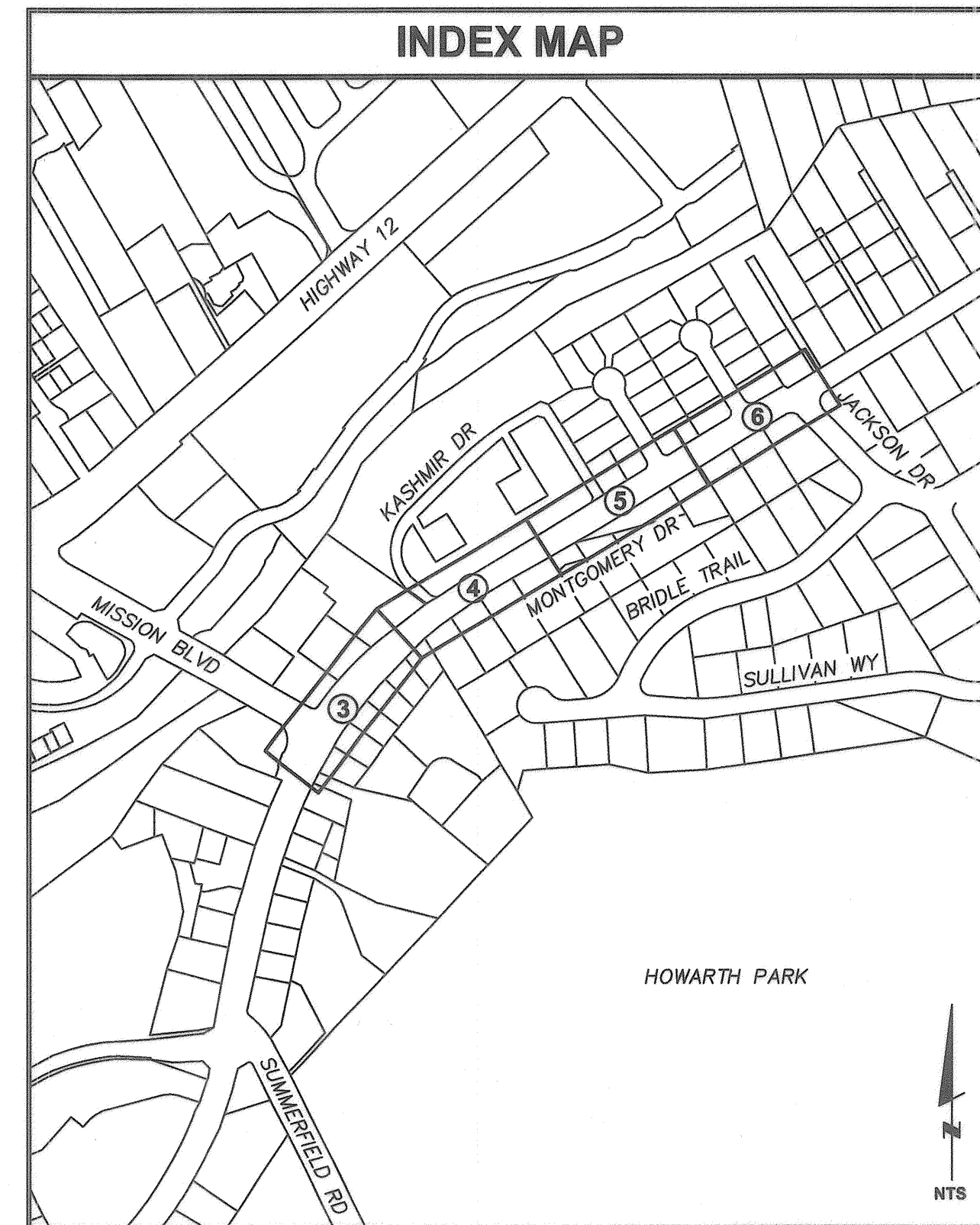
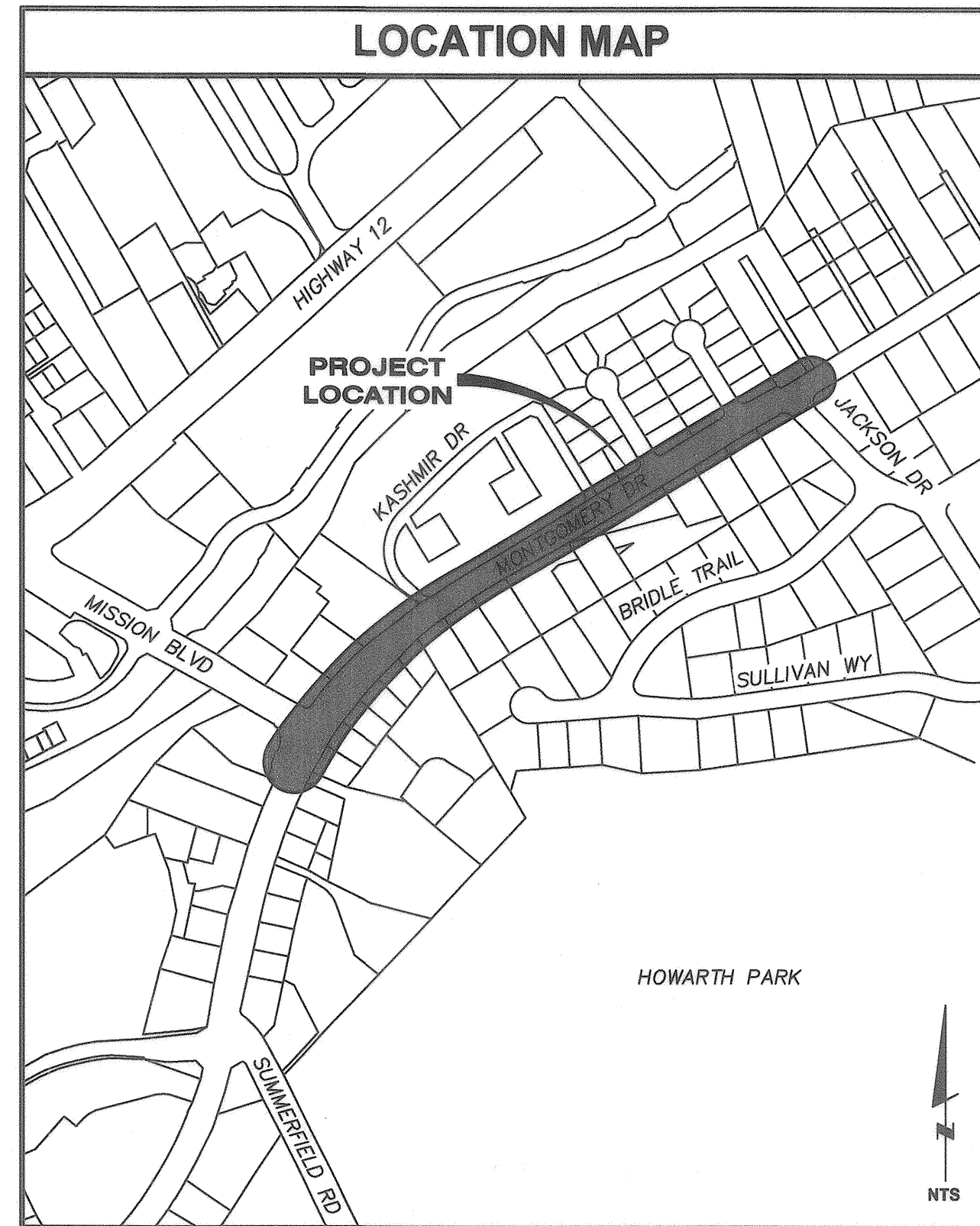
**BKF** *ADZ*  
ENGINEERS / SURVEYORS / PLANNERS  
250 4TH ST. STE. 300 SANTA ROSA, CA 95401  
(707) 535-8200  
**ANDREW J. DeZURIK** C-85129  
DWN BY: CAG CHK BY: AJD DATE: OCTOBER 2020



100% DRAWINGS

**GENERAL NOTES**

- ALL WORKMANSHIP, MATERIALS AND CONSTRUCTION SHALL CONFORM TO THE CITY OF SANTA ROSA STANDARD PLANS, THE CONSTRUCTION SPECIFICATIONS FOR PUBLIC IMPROVEMENTS, THE SPECIAL PROVISIONS FOR THIS PROJECT AND THE STATE STANDARD SPECIFICATIONS AND STANDARD PLANS. THE CONTRACTOR IS RESPONSIBLE FOR UNDERSTANDING ALL STANDARDS PERTAINING TO THIS PROJECT.
- THE CONTRACTOR SHALL CALL UNDERGROUND SERVICE ALERT (USA) AT 1-800-227-2600 NO LESS THAN 2 WORKING DAYS PRIOR TO ANY EXCAVATION FOR MARK OUTS OF EXISTING UNDERGROUND FACILITIES IN ACCORDANCE WITH SECTION 8-1.10 OF THE SPECIAL PROVISIONS.
- THE LOCATIONS OF UNDERGROUND UTILITIES AND OTHER OBSTACLES SHOWN ON THE PLANS ARE BASED ON THE BEST AVAILABLE INFORMATION. THE CONTRACTOR SHALL POT HOLE AND DETERMINE THE EXACT LOCATION OF ALL POTENTIAL CONFLICTS IN ACCORDANCE WITH U.S.A. LAWS AND THESE SPECIAL PROVISIONS AND THE STANDARD SPECIFICATIONS. IF ANY UNMARKED UTILITIES ARE ENCOUNTERED, OR IF UNABLE TO LOCATE A MARKED UTILITY AFTER POT HOLING, THE CONTRACTOR SHALL IMMEDIATELY NOTIFY THE OWNER OF THAT UTILITY AND THE CITY ENGINEER.
- ALL SEWER MANHOLES, MAINLINE CLEANOUTS AND WATER VALVES THAT ARE ON ACTIVE SYSTEMS SHALL BE ACCESSIBLE TO CITY PERSONNEL AT ALL TIMES AND SHALL BE BROUGHT TO GRADE WITHIN 48 HOURS OF PAVING.
- OVERHEAD UTILITY SERVICE DROPS ARE NOT SHOWN ON THE PLANS. THE CONTRACTOR SHALL INVESTIGATE THE SITE AND BE AWARE OF LIMITED CLEARANCES UNDER OVERHEAD UTILITY LINES AND LOW HANGING TREE BRANCHES. THE CONTRACTOR'S TRUCKS AND EXCAVATION EQUIPMENT SHALL BE SIZED SO THAT OVERHEAD WIRES AND TREE BRANCHES ARE NOT DAMAGED.
- THE CONTRACTOR SHALL PROTECT AND PRESERVE CITY MONUMENTS. THE CONTRACTOR SHALL COORDINATE WITH THE CITY ENGINEER 10 WORKING DAYS IN ADVANCE FOR REFERENCING OF EXISTING MONUMENTS TO BE DISTURBED. THE CONTRACTOR SHALL RECONSTRUCT DISTURBED MONUMENTS IN ACCORDANCE WITH CITY STANDARD 280.
- ALL EXCAVATED MATERIAL SHALL BE DISPOSED OF AS GENERATED AND AT NO TIME SHALL THE CONTRACTOR PLACE EXCAVATED MATERIAL AT THE WORK SITE.
- THE CONTRACTOR SHALL ONLY REMOVE EXISTING TREES OR SHRUBS AS NOTED ON THE PLANS OR AS DIRECTED BY THE ENGINEER.
- ALL TRAFFIC STRIPES, RAISED PAVEMENT MARKERS AND PAVEMENT MARKINGS DAMAGED DUE TO THE CONTRACTOR'S OPERATIONS SHALL BE REPLACED PER CITY OF SANTA ROSA TRAFFIC STANDARDS PART III, TRAFFIC MARKINGS. PATCHING OF DAMAGED MARKINGS WILL NOT BE ALLOWED WITHOUT PRIOR APPROVAL FROM ENGINEERING. ALL DAMAGED RAISED PAVEMENT (NON-REFLECTIVE) MARKERS MUST BE REPLACED WITH CERAMIC. SEE SECTION 15-2.02D OF THE STANDARD SPECIFICATIONS.
- FOR CLARITY OF EXISTING SUBSURFACE CONDITIONS, NOT ALL CROSSWALKS, STOP BARS, OR EXISTING PAVEMENT MARKINGS ARE SHOWN ON THE PLANS. TRAFFIC STRIPES, RAISED PAVEMENT MARKERS AND PAVEMENT MARKINGS DAMAGED DUE TO THE CONTRACTOR'S OPERATIONS SHALL BE REPLACED PER CITY OF SANTA ROSA TRAFFIC STANDARDS PART III, TRAFFIC MARKINGS. PATCHING OF DAMAGED MARKINGS WILL NOT BE ALLOWED WITHOUT PRIOR APPROVAL FROM ENGINEERING. ALL DAMAGED RAISED PAVEMENT (NON-REFLECTIVE) MARKERS MUST BE CERAMIC.
- ALL TRENCHING BACKFILL AND REPAIR IN PUBLIC R/W SHALL BE IN ACCORDANCE WITH CITY OF SANTA ROSA STANDARD 215.
- CONSTRUCTION CONTRACTOR AGREES THAT IN ACCORDANCE WITH GENERALLY ACCEPTED CONSTRUCTION PRACTICES, THAT THE CONSTRUCTION CONTRACTOR WILL BE REQUIRED TO ASSUME SOLE AND COMPLETE RESPONSIBILITY FOR JOB SITE CONDITIONS DURING THE COURSE OF CONSTRUCTION OF THE PROJECT, INCLUDING THE SAFETY OF ALL PERSONS AND PROPERTY; THAT THIS REQUIREMENT SHALL BE MADE TO APPLY CONTINUOUSLY AND NOT BE LIMITED TO NORMAL WORKING HOURS, AND CONSTRUCTION CONTRACTOR FURTHER AGREES TO DEFEND, INDEMNIFY, AND HOLD DESIGN PROFESSIONAL, THE ENGINEER, AND THE CITY OF SANTA ROSA AND ITS EMPLOYEES HARMLESS FOR ANY AND ALL LIABILITY, REAL OR ALLEGED IN CONNECTION WITH THE PERFORMANCE OF WORK ON THIS PROJECT, EXCEPTING LIABILITY ARISING FROM THE NEGLIGENCE OF ANY CONSULTING ENGINEER.



**RECORD PLAN DATA**

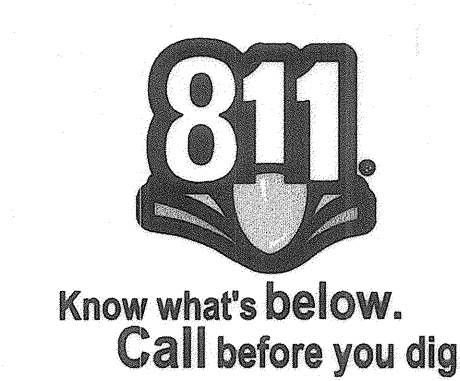
PROJECT START: \_\_\_\_\_  
 PROJECT END: \_\_\_\_\_  
 CITY PROJECT MANAGER: \_\_\_\_\_  
 GEN. CONTRACTOR: \_\_\_\_\_  
 SUPERINTENDENT: \_\_\_\_\_  
 UNDERGROUND CONTRACTOR: \_\_\_\_\_  
 FOREMAN: \_\_\_\_\_  
 SEWER PIPE TYPE: \_\_\_\_\_  
 MANUFACTURER: \_\_\_\_\_  
 SEWER FITTINGS MANUFACTURER: \_\_\_\_\_  
 M.H. MANUFACTURER: \_\_\_\_\_  
 WATER PIPE TYPE: \_\_\_\_\_  
 MANUFACTURER: \_\_\_\_\_  
 WATER VALVE MANUFACTURER: \_\_\_\_\_  
 WATER FITTINGS MANUFACTURER: \_\_\_\_\_  
 WATER SERVICE TYPE: \_\_\_\_\_  
 MANUFACTURER: \_\_\_\_\_  
 FIRE HYDRANT TYPE: \_\_\_\_\_  
 MANUFACTURER: \_\_\_\_\_  
 INSPECTOR: \_\_\_\_\_  
 CONSTRUCTION MANAGER: \_\_\_\_\_  
 RECORD PLANS BY: \_\_\_\_\_  
 ADDITIONAL INFO: \_\_\_\_\_

**INDEX TO SHEETS**

Sheet No.	Title
1	COVER SHEET
2	LEGEND, ABBREVIATIONS, DETAILS & STORM DRAIN PROFILES
3	MONTGOMERY DR PLAN & PROFILE STA. 0+00 TO STA. 4+50
4	MONTGOMERY DR PLAN & PROFILE STA. 4+50 TO STA. 8+90
5	MONTGOMERY DR PLAN & PROFILE STA. 8+90 TO STA. 13+50
6	MONTGOMERY DR PLAN & PROFILE STA. 13+50 TO STA. 18+00

Design/Const	Survey	TPW Field Svc's	Utilities Op's	Traffic	Materials Lab	Dept.	Signature	Date

SCALE:	As Shown	CAG	DATE:	SEPTEMBER 2020	CHK BY:	AJD	APPROVED:	Deputy Director - Engineering	Date:	11/15/20
DWN BY:	CAG									



**BEFORE EXCAVATING**  
**CALL U.S.A.**  
**UNDERGROUND SERVICE ALERT**  
811  
**TWO WORKING DAYS BEFORE ALL**  
**PLANNED WORK OPERATIONS**

CONTRACT NO.  
C001675  
SHEET 1 OF 6  
FILE NO. 2016-0033



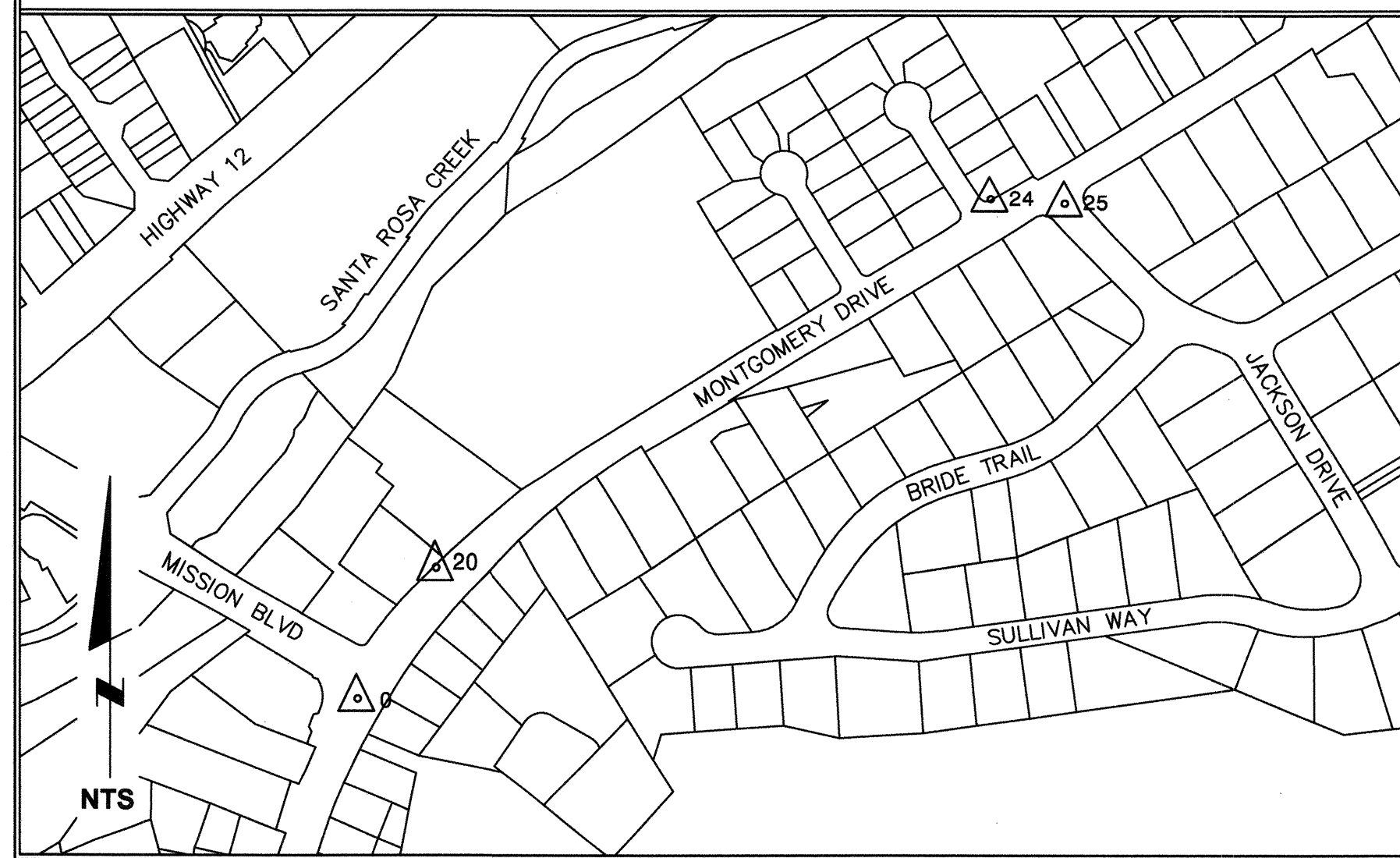
**LEGEND OF SYMBOLS**

DESCRIPTION	EXISTING	NEW
SINGLE 1" WATER SERVICE		STD. 863
1" WATER SERVICE WITH TWO METERS		STD. 864
SINGLE 2" WATER SERVICE		STD. 865
4" MANIFOLD SERVICE		STD. 867 (NUMBER OF METERS WILL VARY)
NEW WATER SERVICE, WATER METER WITH (E) BACK FLOW PREVENTION DEVICE		AS NOTED
WATER MAIN, GATE VALVE, CROSS, & TEMPORARY BLOW OFF		STD. 877, 859 & 860
FIRE HYDRANT ASSEMBLY AND TEE		STD. 887
SEWER LATERAL & CLEANOUT		
SEWER MAIN & MANHOLE		
ABANDONED PIPE		STD. 507
STORM DRAIN, MANHOLE & CATCH BASIN		STD. 402 & 409
CONCRETE CURB, GUTTER, SIDEWALK & DRIVEWAY		
CONCRETED ROCK SLOPE PROTECTION		
CITY MONUMENT		
DROP INLET		
JOINT POLE AND GUY ANCHOR		
STREET LIGHT		
PROPERTY CORNER		
SIGNS		
EX. ATT MANHOLE AND/OR STREET VAULT		
STREET ADDRESS		
DECIDUOUS TREE / SHRUBS		

**ABBREVIATIONS**

AC	ASPHALT CONCRETE	ELEV	ELEVATIONS	RT	RIGHT
ACP	ASBESTOS CEMENT PIPE	EP	EDGE OF PAVEMENT	SD	STORM DRAIN
A.P.N.	ASSESSORS PARCEL NUMBER	EVC	END VERTICAL CURVE	SDMH	STORM DRAIN MANHOLE
A.R.V.	AIR RELIEF VALVE	EX, (E)	EXISTING	SS	SANITARY SEWER
BC	BEGIN CURVE	FBG	FEET BELOW GRADE	SSMH	SANITARY SEWER MANHOLE
BFP	BACK FLOW PREVENTER	FC	FACE OF CURB	SSCO	SANITARY SEWER CLEANOUT
BRC	BEGIN REVERSE CURVE	FG	FINISHED GRADE	STL	STEEL PIPE
BSW	BACK OF SIDEWALK	FL	FLOW LINE	STD	STANDARD
BVC	BEGIN VERTICAL CURVE	FLG	FLOW LINE OF GUTTER	TB	TOP OF BANK
CB	CATCH BASIN	FSW	FRONT OF SIDEWALK	TC	TOP OF CURB
C&G	CURB & GUTTER	LG	LIP OF GUTTER	TEL	TELEPHONE
CL	CENTERLINE	GB	GRADE BREAK	TOP	TOP OF PIPE
CMP	CORRUGATED METAL PIPE	GV	GAS VALVE	TP	TRANSMISSION PRESSURE
CO	CLEANOUT	IC	INTERCONNECT	TS	TRAFFIC SIGNAL
CONC	CONCRETE	IG	INVERT GRADE	TYP	TYPICAL
CR	CURB RETURN	LF	LINEAR FEET	UG	UNDERGROUND
CTV	CABLE TELEVISION LINE	LD	LIP OF GUTTER	ULT	VAULT
DET	DETECTOR	LT	LEFT	W	WATER
DI	DROP INLET	PED	PEDESTRIAN	WS	WATER SERVICE
DWY	DRIVEWAY	PVI	POINT OF VERTICAL INTERSECTION	WTR, W	WATER
EC	END CURVE	PRV	PRESSURE REDUCING VALVE		
EFC	EAST FACE OF CURB	RCP	REINFORCED CONCRETE PIPE		
ELEC	ELECTRIC	R&R	REMOVE & REPLACE		

**MONTGOMERY DR CONTROL DIAGRAM**



**MONTGOMERY DRIVE SURVEY DATA:**

**BENCHMARK DATA:**  
 B75 MONTGOMERY DRIVE AND MISSION BOULEVARD; CITY DISK IN WELL MONUMENT, 238.961 8 FEET WEST OF CL INTERSECTION. (COORDINATE MONUMENT G-431)  
 A103 MONTGOMERY DRIVE AND GREENGATE COURT; CITY DISK IN WELL MONUMENT, AT 247.394 CL INTERSECTION.

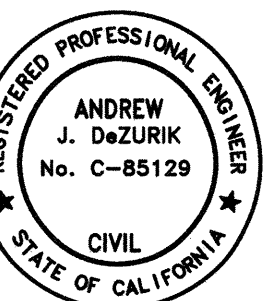
**SURVEY CONTROL DATA:**

POINT	DESCRIPTION	NORTHING	EASTING	ELEV
0	MONTGOMERY DRIVE AND MISSION BLVD; CITY DISK IN WELL MONUMENT, 8 FT WEST OF CL INTERSECTION. (COORDINATE MONUMENT G-431)	1929054.974	6369457.468	238.961
20	SET CHISLED "X" AT TOP OF CURB, N/S OF MONTGOMERY DRIVE, STA. 4+98.50 AT 20.5 FEET EAST OF JOINT POLE.	1929284.198	6369573.929	239.64
24	SET CHISLED "X" AT TOP OF EAST CURB RETURN, N/E CORNER OF MONTGOMERY DRIVE AND CREEKVIEW COURT. STA. 14+79.	1929827.925	6370400.528	246.03
25	SET PK NAIL IN ASPHALT, SOUTH SIDE OF MONTGOMERY DRIVE ON CL OF JACKSON DRIVE AND 16.5 FEET S/O SSMH #4 STA. 18+52	1929984.405	6370742.324	250.45

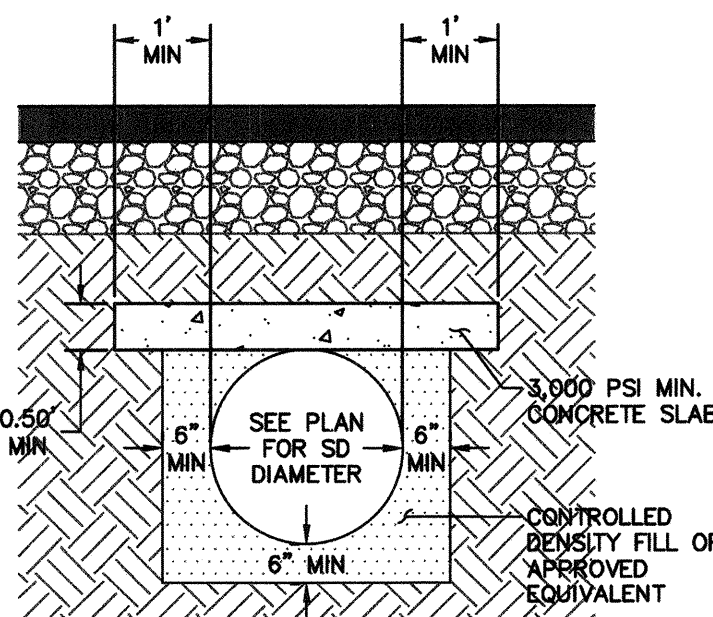
**BASIS OF BEARINGS:**

THE HORIZONTAL BASIS OF BEARING IS BETWEEN CITY COORDINATE MONUMENTS G-431 AND G-7???

**BKF** Andrew J. DeZurik  
 ENGINEERS / SURVEYORS / PLANNERS  
 200 4TH ST. STE. 300 SANTA ROSA, CA 95401  
 (707) 542-8200 FAX: (707) 542-8539  
**ANDREW J. DeZURIK** C-85129  
 DWN BY: CAG CHK BY: AJD DATE: OCTOBER 2020



No.	Date	Revision	By



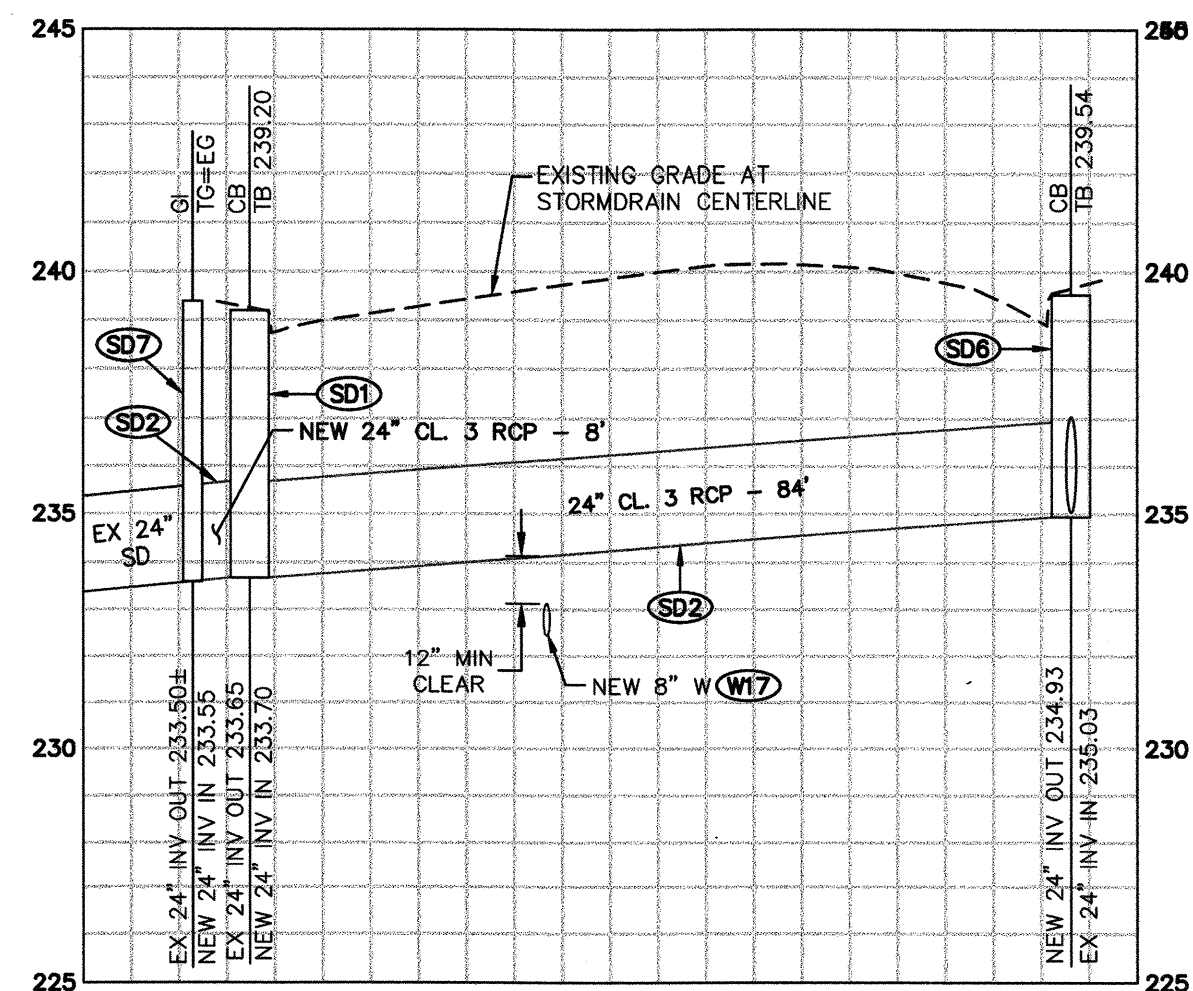
1 CONCRETE ENCASUREMENT  
NO SCALE

**WATER KEYNOTES:**

W17 WATER MAIN UNDER STRUCTURE IN ACCORDANCE WITH CITY OF SANTA ROSA BLANKET WAIVER 6.

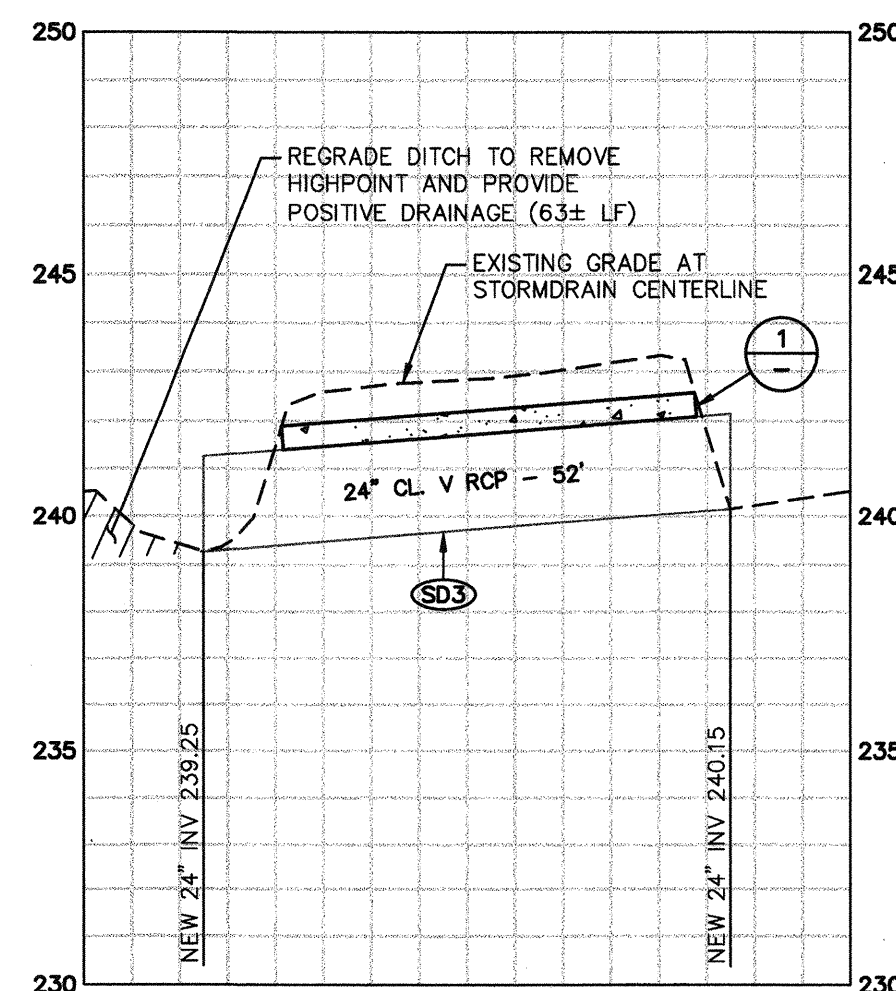
**STORM DRAIN KEYNOTES:**

- SD1 FURNISH AND INSTALL NEW TYPE II CATCH BASIN IN ACCORDANCE WITH CITY STANDARD 235, 237, 241, 402 & 409.
- SD2 REMOVE EXISTING 24" CMP STORM DRAIN AND INSTALL NEW 24" RCP STORM DRAIN. SEE SHEET 2 FOR STORM DRAIN PROFILES.
- SD3 REMOVE EXISTING 24" CMP STORM DRAIN AND INSTALL NEW 24" RCP STORM DRAIN. INSTALL ROCK SLOPE PROTECTION AT INLET AND OUTLET IN ACCORDANCE WITH STANDARD SPECIFICATION SECTION 72-2.03C METHOD B. SEE SHEET 2 FOR STORM DRAIN PROFILES.
- SD4 REMOVE EXISTING 24" CMP STORM DRAIN AND INSTALL NEW 19"x30" ELLIPTICAL CONCRETE PIPE. INSTALL ROCK SLOPE PROTECTION AT INLET AND OUTLET IN ACCORDANCE WITH STANDARD SPECIFICATION SECTION 72-2.03C METHOD B. SEE SHEET 2 FOR STORM DRAIN PROFILES.
- SD5 REMOVE EXISTING 18" CMP STORM DRAIN AND INSTALL NEW 14"x23" ELLIPTICAL CONCRETE PIPE. INSTALL ROCK SLOPE PROTECTION AT INLET AND OUTLET IN ACCORDANCE WITH STANDARD SPECIFICATION SECTION 72-2.03C METHOD B. THE ROCK SLOPE PROTECTION AT THE INLET SHALL BE REPLACED IN KIND. SEE SHEET 2 FOR STORM DRAIN PROFILES.
- SD6 REMOVE EXISTING GRATE AND CATCH BASIN. INSTALL NEW TYPE II CATCH BASIN & CONCRETE IN ACCORDANCE WITH CITY STANDARD 235, 237, 241, 402 & 409.
- SD7 FURNISH AND INSTALL NEW 24"x36" PRECAST CONCRETE GRATE INLET. SEE CITY STANDARD 882 FOR LAYOUT WITH PRESSURE RELEASE VALVE.



MONTGOMERY DRIVE STORM DRAIN CROSSING - STA. 2+36

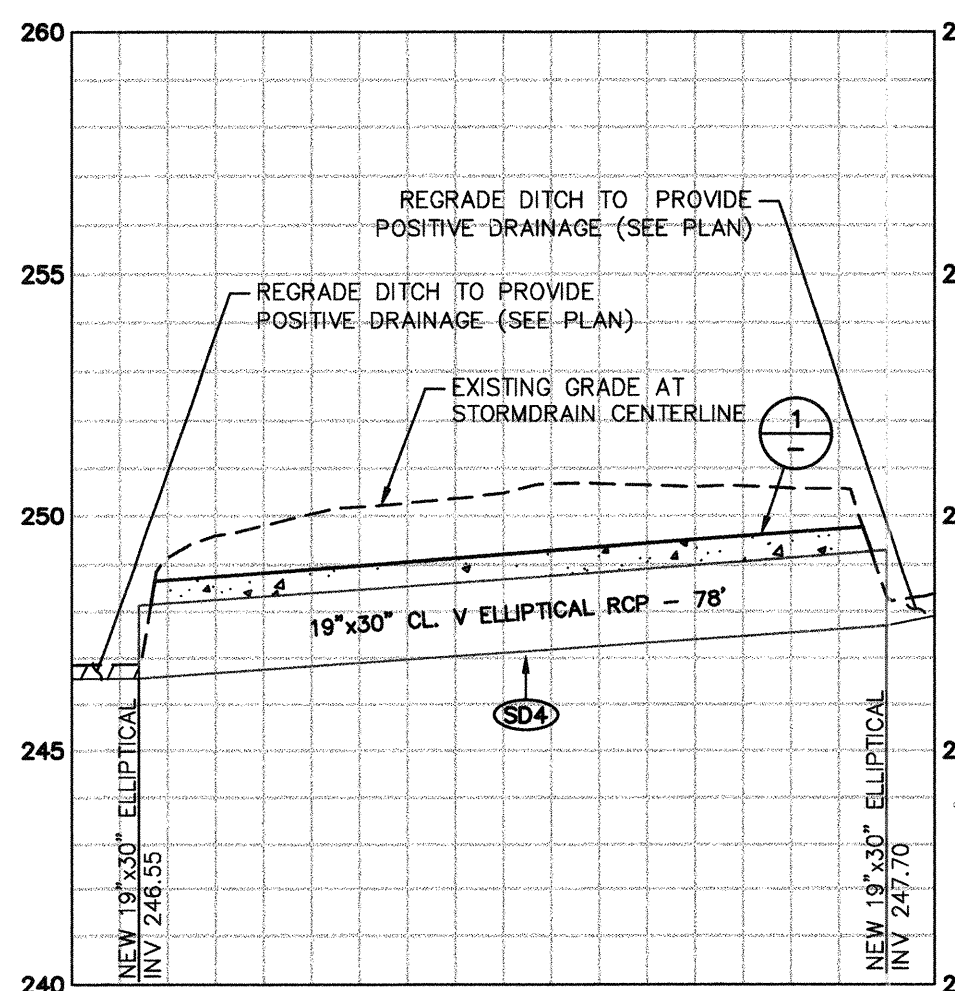
H: 1"=20'  
V: 1"=4'



STORM DRAIN CULVERT AT ROCKY WAY - STA. 8+29 TO STA. 8+81

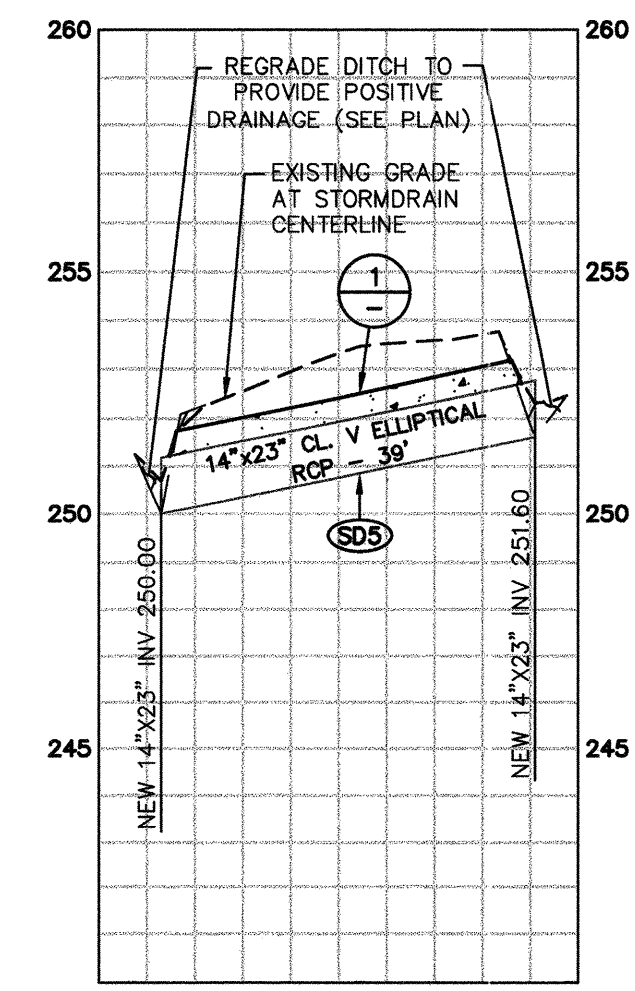
H: 1"=20'  
V: 1"=4'

**NOTE**  
STORM DRAIN PROFILES SHOWN FOR REFERENCE ONLY. REFER TO PLAN SHEETS FOR PROPOSED ELEVATIONS.



STORM DRAIN CULVERT AT JACKSON DR - STA. 17+17 TO STA. 17+94

H: 1"=20'  
V: 1"=4'



STORM DRAIN CROSSING ON JACKSON DR

H: 1"=20'  
V: 1"=4'

DATE: SEPTEMBER 2020

CHK BY: AJD

SCALE: As Shown

DWN BY: CAG

CITY OF SANTA ROSA

MONTGOMERY DRIVE

WATER MAIN REPLACEMENT

LEGEND & STORM DRAIN PROFILES

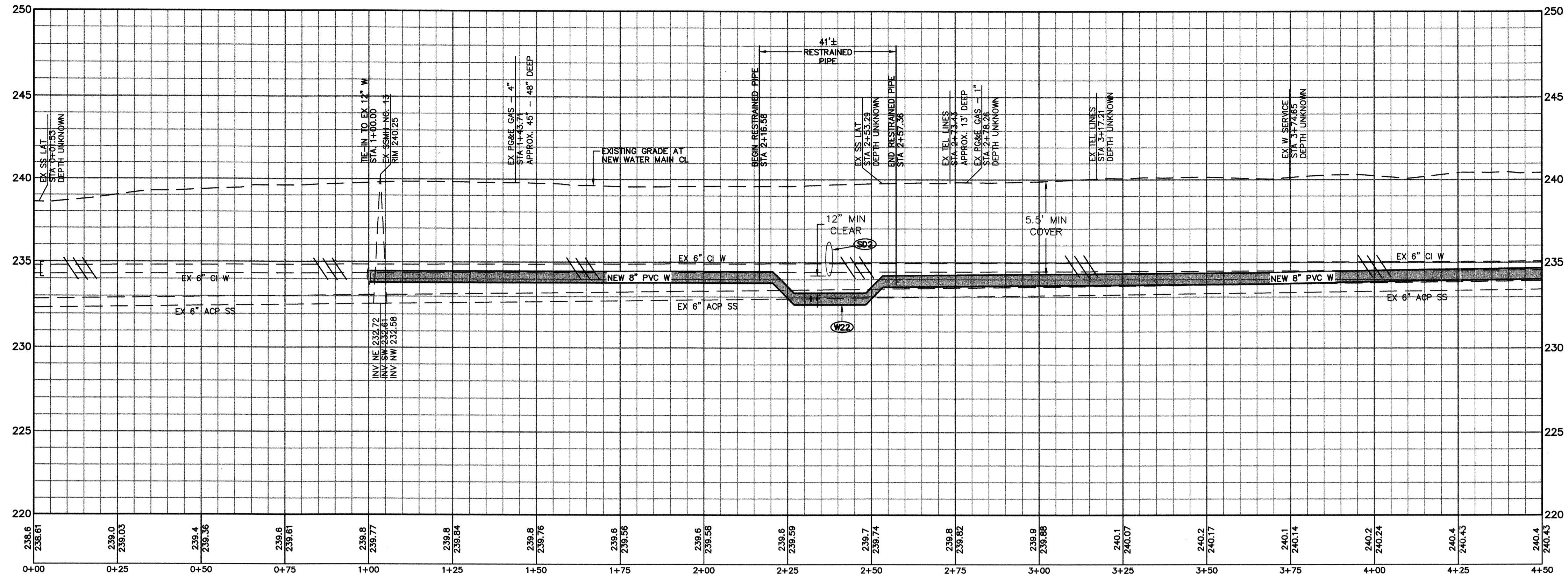
CONTRACT NO. C001675

SHEET 2 OF 6

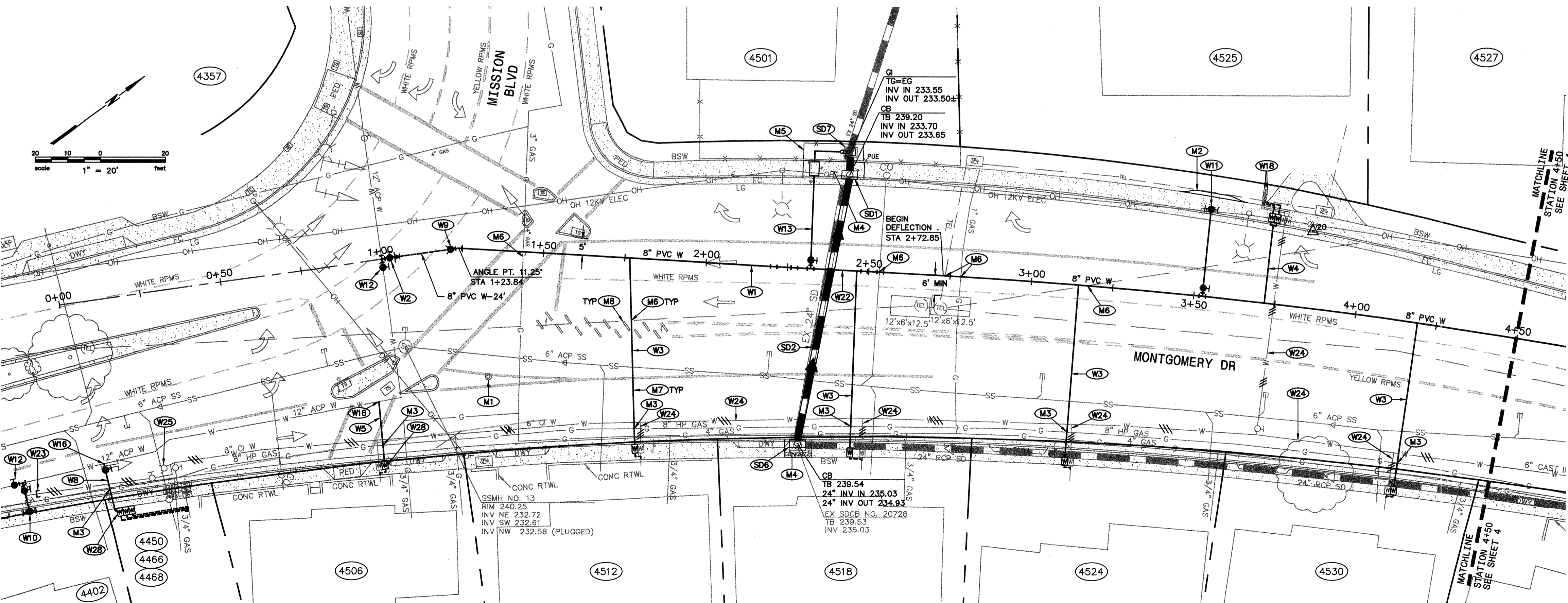
FILE NO. 2016-0033



THE LOCATIONS OF EXISTING UTILITIES SHOWN ON THE PLANS ARE APPROXIMATE ONLY. THE CONTRACTOR SHALL POthOLE AND DETERMINE THE EXACT HORIZONTAL AND VERTICAL LOCATION OF ALL EXISTING UTILITIES FIVE WORKING DAYS PRIOR TO THE START OF TRENCHING AND SHALL ADJUST THE DEPTH OF THE NEW UTILITIES TO CLEAR ANY CONFLICTS AS DIRECTED BY THE ENGINEER.



**MONTGOMERY DRIVE PROFILE**  
 H: 1"=5'  
 V: 1"=1'



**PLAN**  
 SCALE: 1"=20'

- WATER KEYNOTES:**
- W1 FURNISH AND INSTALL NEW 8" PVC WATER MAIN.
  - W2 AFTER SUCCESSFUL TESTING OF NEW WATER SYSTEM, CUT-IN NEW 12"x12"x8" TEE, 12" GATE VALVE AND 12"x8" REDUCER AND CONNECT TO NEW 8" PVC WATER MAIN AS SINGLE OPERATION UNDER AUTHORIZED CITY INSPECTION.
  - W3 FURNISH AND INSTALL NEW 1" HDPE WATER SERVICE PLUMBED FOR 5/8"x3/4" WATER METER IN ACCORDANCE WITH CITY STANDARD 863A. CONNECT NEW METER TO EXISTING SERVICE LINE TO BUILDING.
  - W4 FURNISH AND INSTALL NEW 1 1/2" HDPE DUAL WATER SERVICE IN ACCORDANCE WITH CITY STANDARD 864. CONNECT NEW METERS TO EXISTING SERVICE LINES TO BUILDING.
  - W5 FURNISH AND INSTALL NEW 1" HDPE WATER SERVICE ON EXISTING 12" ACP WATER MAIN IN ACCORDANCE WITH CITY STANDARD 863A. CONNECT NEW METER TO EXISTING SERVICE LINE TO BUILDING.
  - W6 FURNISH AND INSTALL NEW 4" MULTISERVICE MANIFOLD IN ACCORDANCE WITH CITY STANDARD 887, AND THREE 1" METERS IN ACCORDANCE WITH CITY STANDARD 863. CONNECT NEW METERS TO EXISTING SERVICE LINES TO BUILDINGS.
  - W9 FURNISH AND INSTALL NEW TEMPORARY BLOWOFF IN ACCORDANCE WITH CITY STANDARDS.
  - W10 CUT-IN NEW COMMERCIAL FIRE HYDRANT AND LATERAL ASSEMBLY IN ACCORDANCE WITH CITY STANDARD 857. UNDER AUTHORIZED CITY INSPECTION, CONSTRUCT COMPLETE ASSEMBLY SAME DAY AS CUT IN, INCLUDING PERMANENT/TEMPORARY CONCRETE BLOCKING.
  - W11 FURNISH AND INSTALL NEW COMMERCIAL FIRE HYDRANT AND LATERAL ASSEMBLY IN ACCORDANCE WITH CITY STANDARD 857.
  - W12 FURNISH AND INSTALL NEW GATE VALVE IN ACCORDANCE WITH CITY STANDARD 877.
  - W13 FURNISH AND INSTALL NEW 4" PRESSURE RELIEF VALVE IN ACCORDANCE WITH CITY STANDARD 882. SPACER TO BE INSTALLED BY CONTRACTOR.
  - W16 HOT TAP BY CITY FORCES.
  - W18 CERTIFY NEW BACKFLOW DEVICE/RE-CERTIFY EXISTING BACKFLOW DEVICE.
  - W22 WATER MAIN LOWERING WITH 22.5 DEGREE BENDS IN ACCORDANCE WITH CITY OF SANTA ROSA BLANKET WAIVER 6.
  - W23 CUT AND CAP EXISTING WATER MAIN UNDER CITY INSPECTION. RESTRAIN CAP WITH TIE-BACK HARNESS AND ANCHOR BLOCK IN ACCORDANCE WITH CITY STANDARD 852. SET BLOCK AND RODS 24 HOURS PRIOR TO CUT AND CAP.
  - W24 REMOVE OR ABANDON EXISTING WATER SYSTEM COMPONENTS IN ACCORDANCE WITH CITY STANDARDS. REMOVE EXISTING VALVE BOXES AND RISERS AND DISPOSE OF IN ACCORDANCE WITH LOCAL REGULATIONS. ABANDON MAINS IN ACCORDANCE WITH CITY STANDARD 507.
  - W25 REMOVE BLOWOFF BOX AND PIPING AND DISPOSE OF IN ACCORDANCE WITH LOCAL REGULATIONS.
  - W28 WHERE WATER METER BOX IS WITHIN 3-FEET OF A DRIVEWAY CURB CUT, FURNISH AND INSTALL TRAFFIC RATED BOX.
- STORM DRAIN KEYNOTES:**
- SD1 FURNISH AND INSTALL NEW TYPE II CATCH BASIN IN ACCORDANCE WITH CITY STANDARD 235, 237, 241, 402 & 409.
  - SD2 REMOVE EXISTING 24" CMP STORM DRAIN AND INSTALL NEW 24" RCP STORM DRAIN. SEE SHEET 2 FOR STORM DRAIN PROFILES.
  - SD6 REMOVE EXISTING GRATE AND CATCH BASIN. INSTALL NEW TYPE II CATCH BASIN & CONCRETE IN ACCORDANCE WITH CITY STANDARD 235, 237, 241, 402 & 409.
  - SD7 FURNISH AND INSTALL NEW 24"x36" PRECAST CONCRETE GRATE INLET. SEE CITY STANDARD 882 FOR LAYOUT WITH PRESSURE RELEASE VALVE.
- MISCELLANEOUS KEYNOTES:**
- M1 PROTECT AND PRESERVE CITY OF SANTA ROSA CENTERLINE MONUMENT.
  - M2 SIDEWALK OBSTRUCTION TRANSITION IN ACCORDANCE WITH CITY STANDARD 231.
  - M3 CONTRACTOR IS RESPONSIBLE FOR CONTACTING PG&E FOR ON-SITE INSPECTION ANY TIME WORK IS BEING DONE WITHIN 5' OF A HIGH PRESSURE GAS LINE.
  - M4 SAWCUT AND REMOVE EXISTING CONCRETE TO THE NEAREST SCORE MARK TO FACILITATE THE PROPOSED IMPROVEMENTS. REPLACE IN KIND. PROVIDE A UNIFORM TRANSITION BETWEEN SURFACE WHICH DOES NOT IMPED DRAINAGE.
  - M5 RELOCATE EXISTING FENCE TO FACILITATE THE PROPOSED IMPROVEMENTS.
  - M6 POTHOLE TO VERIFY DEPTH OF EXISTING UTILITIES PRIOR TO TRENCHING TO INSTALL THE PROPOSED IMPROVEMENTS.
  - M7 NEATLY CUT PAVEMENT AFTER TRENCH IS BACKFILLED TO SUBGRADE. REMOVE ADDITIONAL PAVEMENT TO A PAINTED LANE STRIPE, LIP OF GUTTER, CURB, PAVEMENT PATCH, OR EDGE OF THE PAVEMENT IF SUCH STREET FEATURE IS WITHIN 3 FEET OF THE FINAL SAW CUT, IN ACCORDANCE WITH CITY STANDARD 215.
  - M8 REMOVE AND REPLACE EXISTING WHEEL STOPS IN KIND AS REQUIRED TO FACILITATE THE PROPOSED IMPROVEMENTS.

City of Santa Rosa

No.	Date	Revision	By

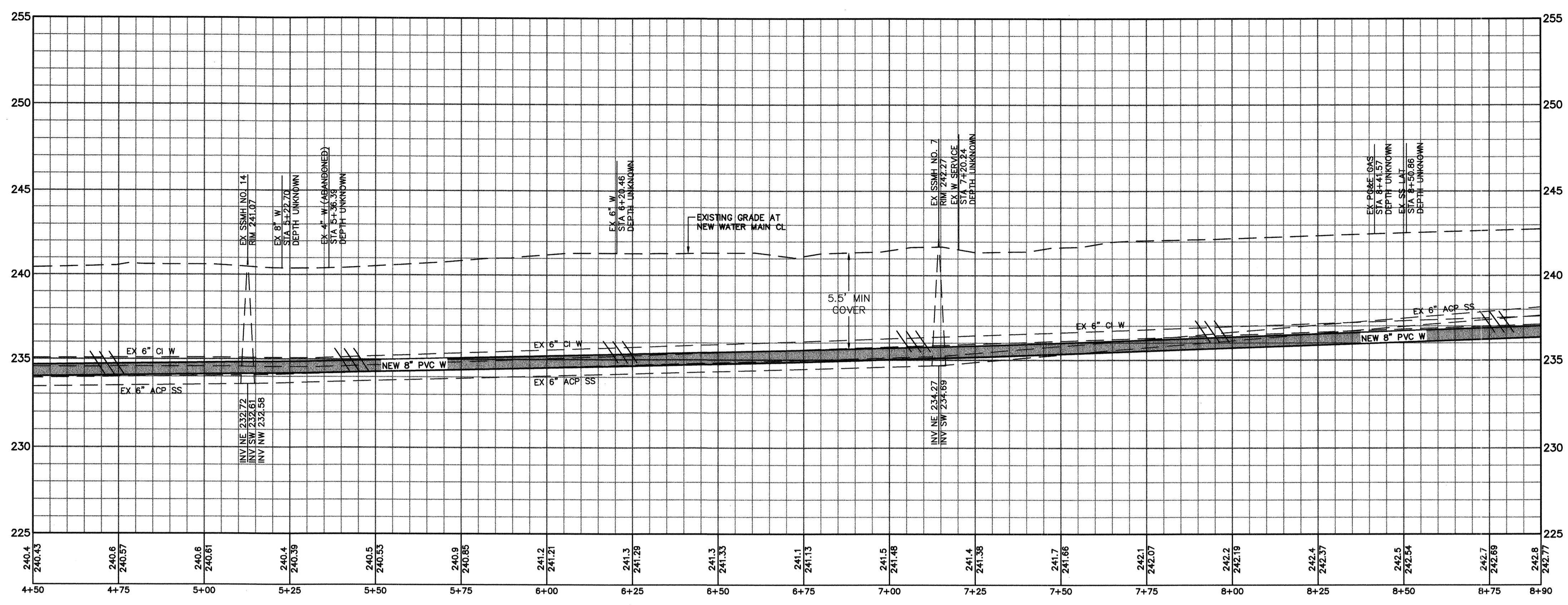
DATE: SEPTEMBER 2020	CHK BY: AJD
SCALE: As Shown	DWN BY: CAG

**CITY OF SANTA ROSA**  
**MONTGOMERY DRIVE**  
**WATER MAIN**  
**REPLACEMENT**  
**MONTGOMERY DR PLAN & PROFILE**  
**STA. 0+00 TO STA. 4+50**

CONTRACT NO. C001675  
 SHEET 3 OF 6  
 FILE NO. 2016-0033

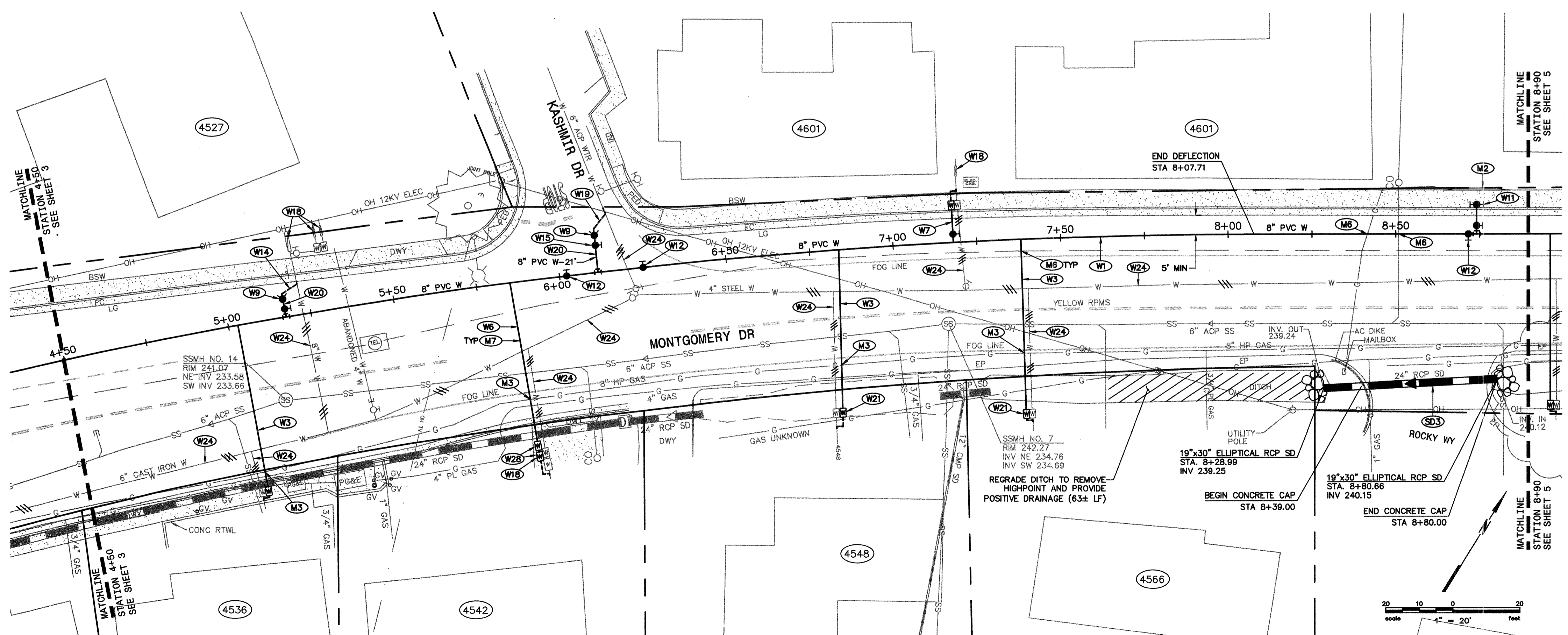


THE LOCATIONS OF EXISTING UTILITIES SHOWN ON THE PLANS ARE APPROXIMATE ONLY. THE CONTRACTOR SHALL POTHOLE AND DETERMINE THE EXACT HORIZONTAL AND VERTICAL LOCATION OF ALL EXISTING UTILITIES FIVE WORKING DAYS PRIOR TO THE START OF TRENCHING AND SHALL ADJUST THE DEPTH OF THE NEW UTILITIES TO CLEAR ANY CONFLICTS AS DIRECTED BY THE ENGINEER.



**MONTGOMERY DRIVE PROFILE**  
 H: 1"=5'  
 V: 1"=1'

- WATER KEYNOTES:**
- (W1) FURNISH AND INSTALL NEW 8" PVC WATER MAIN.
  - (W3) FURNISH AND INSTALL NEW 1" HDPE WATER SERVICE PLUMBED FOR 5/8"x3/4" WATER METER IN ACCORDANCE WITH CITY STANDARD 863A. CONNECT NEW METER TO EXISTING SERVICE LINE TO BUILDING.
  - (W6) FURNISH AND INSTALL NEW 1" HDPE WATER SERVICE PLUMBED FOR 1" METER IN ACCORDANCE WITH CITY STANDARD 863A AND NEW 1" DOUBLE CHECK VALVE BACKFLOW DEVICE IN ACCORDANCE WITH CITY STANDARD 875. CONNECT NEW METER AND BACKFLOW DEVICE TO EXISTING SERVICE LINE TO BUILDING AND REPLACE APPROXIMATELY 65 SQUARE FEET OF DECORATIVE CONCRETE, MATCHING COLOR AND TEXTURE.
  - (W7) FURNISH AND INSTALL 2" HDPE WATER SERVICE PLUMBED FOR 2" METER IN ACCORDANCE WITH CITY STANDARD 863A. CONNECT NEW METER TO EXISTING SERVICE LINE TO BUILDING.
  - (W8) FURNISH AND INSTALL NEW TEMPORARY BLOWOFF IN ACCORDANCE WITH CITY STANDARDS.
  - (W11) FURNISH AND INSTALL NEW COMMERCIAL FIRE HYDRANT AND LATERAL ASSEMBLY IN ACCORDANCE WITH CITY STANDARD 857.
  - (W12) FURNISH AND INSTALL NEW GATE VALVE IN ACCORDANCE WITH CITY STANDARD 877.
  - (W14) AFTER SUCCESSFUL TESTING OF NEW WATER SYSTEM INSTALL 8" TEE AND 8" GATE VALVE AND CONNECT TO EXISTING 8" FIRE LINE UNDER AUTHORIZED CITY INSPECTION. TIE-IN SHALL BE DIP.
  - (W15) FURNISH AND INSTALL AN 8"x6" REDUCING TEE AND 6" GATE VALVE.
  - (W18) CERTIFY NEW BACKFLOW DEVICE/RE-CERTIFY EXISTING BACKFLOW DEVICE.
  - (W19) AFTER SUCCESSFUL TESTING OF THE NEW WATER SYSTEM, MAKE TIE-IN TO EXISTING WATER MAIN UNDER AUTHORIZED CITY INSPECTION. IF TIE-IN IS OFFSET VERTICALLY FROM EXISTING MAIN, TIE-IN SHALL BE DIP.
  - (W20) RESTRAINED FROM TEE TO TIE-IN.
  - (W21) DUE TO EXISTING GRADE AND/OR VEGETATION, GRADING AND OR CONCRETE COLLAR MAY BE REQUIRED TO KEEP WATER METER LOCATION VISIBLE AND ACCESSIBLE.
  - (W24) REMOVE OR ABANDON EXISTING WATER SYSTEM COMPONENTS IN ACCORDANCE WITH CITY STANDARDS. REMOVE EXISTING VALVE BOXES AND RISERS AND DISPOSE OF IN ACCORDANCE WITH LOCAL REGULATIONS. ABANDON MAINS IN ACCORDANCE WITH CITY STANDARD 507.
  - (W28) WHERE WATER METER BOX IS WITHIN 3- FEET OF A DRIVEWAY CURB CUT, FURNISH AND INSTALL TRAFFIC RATED BOX.
- STORM DRAIN KEYNOTES:**
- (SD3) REMOVE EXISTING 24" CMP STORM DRAIN AND INSTALL NEW 24" RCP STORM DRAIN. INSTALL ROCK SLOPE PROTECTION AT INLET AND OUTLET IN ACCORDANCE WITH STANDARD SPECIFICATION SECTION 72-2.09C METHOD B. SEE SHEET 2 FOR STORM DRAIN PROFILES.
- MISCELLANEOUS KEYNOTES:**
- (M2) SIDEWALK OBSTRUCTION TRANSITION IN ACCORDANCE WITH CITY STANDARD 231.
  - (M3) CONTRACTOR IS RESPONSIBLE FOR CONTACTING PG&E FOR ON-SITE INSPECTION ANY TIME WORK IS BEING DONE WITHIN 5' OF A HIGH PRESSURE GAS LINE.
  - (M6) POTHOLE TO VERIFY DEPTH OF EXISTING UTILITIES PRIOR TO TRENCHING TO INSTALL THE PROPOSED IMPROVEMENTS.
  - (M7) NEATLY CUT PAVEMENT AFTER TRENCH IS BACKFILLED TO SUBGRADE. REMOVE ADDITIONAL PAVEMENT TO A PAINTED LANE STRIPE, LIP OF GUTTER, CURB, PAVEMENT PATCH, OR EDGE OF THE PAVEMENT IF SUCH STREET FEATURE IS WITHIN 3 FEET OF THE FINAL SAW CUT, IN ACCORDANCE WITH CITY STANDARD 215.



**PLAN**  
 SCALE: 1"=20'

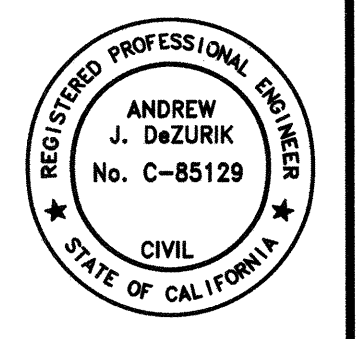
No.	Date	Revision	By

CITY OF SANTA ROSA  
**MONTGOMERY DRIVE WATER MAIN REPLACEMENT**  
**MONTGOMERY DR PLAN & PROFILE STA. 4+50 TO STA. 8+90**

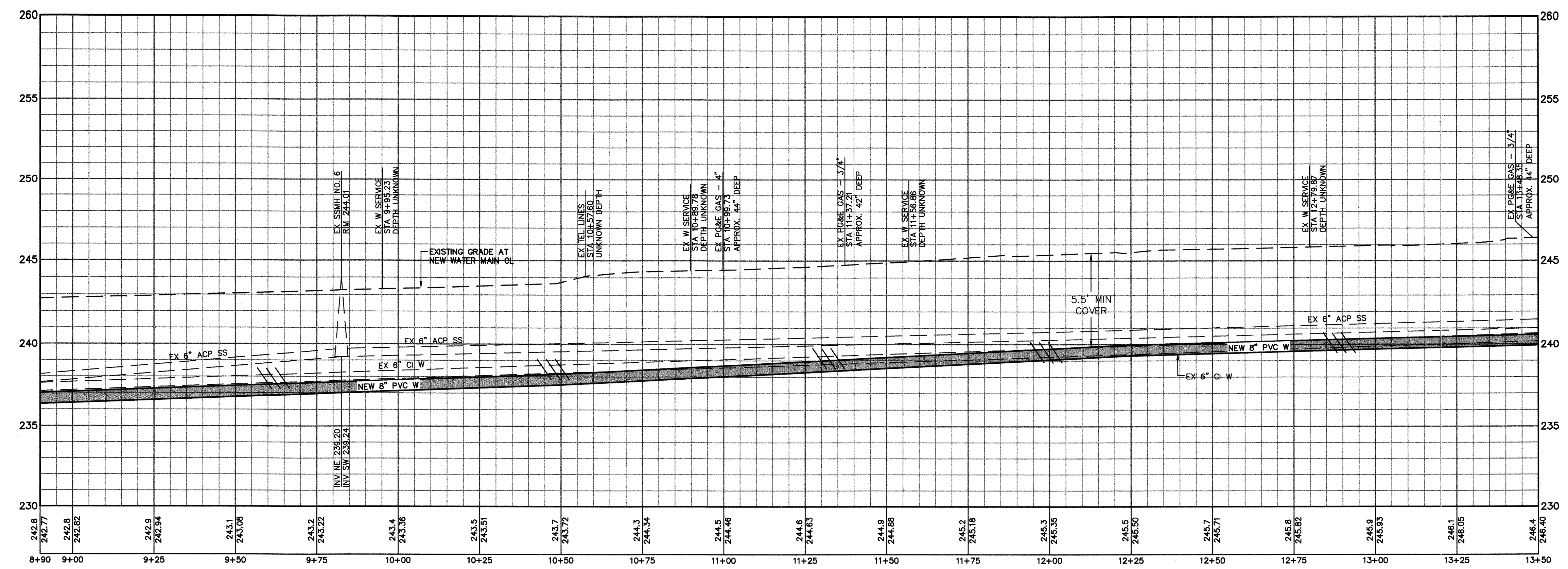
CONTRACT NO. C001675  
 SHEET 4 OF 6  
 FILE NO. 2016-0033

DATE: SEPTEMBER 2020  
 SCALE: As Shown  
 DWN BY: CAG  
 CHK BY: AJD





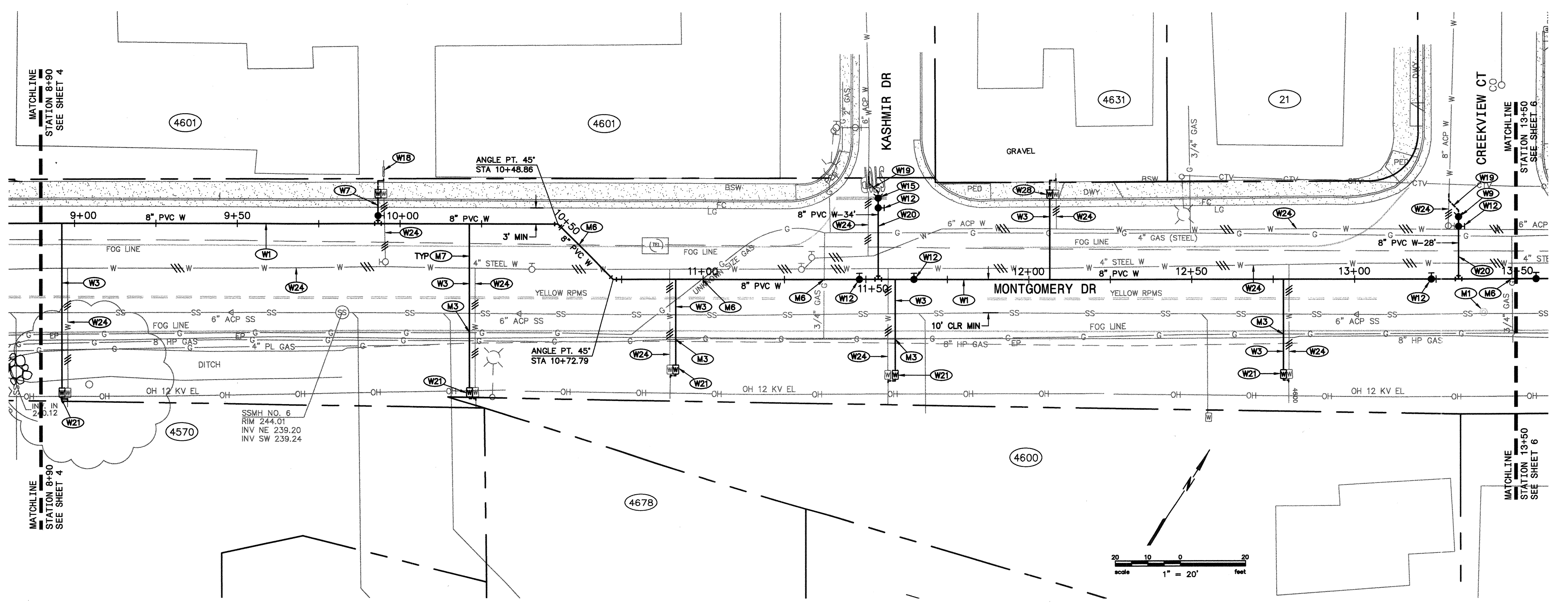
THE LOCATIONS OF EXISTING UTILITIES SHOWN ON THE PLANS ARE APPROXIMATE ONLY. THE CONTRACTOR SHALL POthOLE AND DETERMINE THE EXACT HORIZONTAL AND VERTICAL LOCATION OF ALL EXISTING UTILITIES FIVE WORKING DAYS PRIOR TO THE START OF TRENCHING AND SHALL ADJUST THE DEPTH OF THE NEW UTILITIES TO CLEAR ANY CONFLICTS AS DIRECTED BY THE ENGINEER.



**MONTGOMERY DRIVE PROFILE**

H: 1"=5'  
 V: 1"=1'

- WATER KEYNOTES:**
- (W1) FURNISH AND INSTALL NEW 8" PVC WATER MAIN.
  - (W3) FURNISH AND INSTALL NEW 1" HDPE WATER SERVICE PLUMBED FOR 5/8"x3/4" WATER METER IN ACCORDANCE WITH CITY STANDARD 863A. CONNECT NEW METER TO EXISTING SERVICE LINE TO BUILDING.
  - (W7) FURNISH AND INSTALL 2" HDPE WATER SERVICE PLUMBED FOR 2" METER IN ACCORDANCE WITH CITY STANDARD 865A. CONNECT NEW METER TO EXISTING SERVICE LINE TO BUILDING.
  - (W8) FURNISH AND INSTALL NEW TEMPORARY BLOWOFF IN ACCORDANCE WITH CITY STANDARDS.
  - (W12) FURNISH AND INSTALL NEW GATE VALVE IN ACCORDANCE WITH CITY STANDARD 877.
  - (W15) FURNISH AND INSTALL AN 8"x6" REDUCING TEE AND 6" GATE VALVE.
  - (W18) CERTIFY NEW BACKFLOW DEVICE/RE-CERTIFY EXISTING BACKFLOW DEVICE.
  - (W19) AFTER SUCCESSFUL TESTING OF THE NEW WATER SYSTEM, MAKE TIE-IN TO EXISTING WATER MAIN UNDER AUTHORIZED CITY INSPECTION. IF TIE-IN IS OFFSET VERTICALLY FROM EXISTING MAIN, TIE-IN SHALL BE DIP.
  - (W20) RESTRAINED FROM TEE TO TIE-IN.
  - (W21) DUE TO EXISTING GRADE AND/OR VEGETATION, GRADING AND OR CONCRETE COLLAR MAY BE REQUIRED TO KEEP WATER METER LOCATION VISIBLE AND ACCESSIBLE.
  - (W24) REMOVE OR ABANDON EXISTING WATER SYSTEM COMPONENTS IN ACCORDANCE WITH CITY STANDARDS. REMOVE EXISTING VALVE BOXES AND RISERS AND DISPOSE OF IN ACCORDANCE WITH LOCAL REGULATIONS. ABANDON MAINS IN ACCORDANCE WITH CITY STANDARD 507.
  - (W28) WHERE WATER METER BOX IS WITHIN 3-FEET OF A DRIVEWAY CURB CUT, FURNISH AND INSTALL TRAFFIC RATED BOX.
- MISCELLANEOUS KEYNOTES:**
- (M1) PROTECT AND PRESERVE CITY OF SANTA ROSA CENTERLINE MONUMENT.
  - (M3) CONTRACTOR IS RESPONSIBLE FOR CONTACTING PG&E FOR ON-SITE INSPECTION ANY TIME WORK IS BEING DONE WITHIN 5' OF A HIGH PRESSURE GAS LINE.
  - (M6) POTHOLE TO VERIFY DEPTH OF EXISTING UTILITIES PRIOR TO TRENCHING TO INSTALL THE PROPOSED IMPROVEMENTS.
  - (M7) NEATLY CUT PAVEMENT AFTER TRENCH IS BACKFILLED TO SUBGRADE. REMOVE ADDITIONAL PAVEMENT TO A PAINTED LANE STRIPE, LIP OF GUTTER, CURB, PAVEMENT PATCH, OR EDGE OF THE PAVEMENT IF SUCH STREET FEATURE IS WITHIN 3 FEET OF THE FINAL SAW CUT, IN ACCORDANCE WITH CITY STANDARD 215.



**PLAN**  
 SCALE: 1"=20'

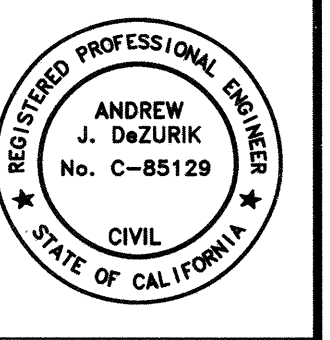
No.	Date	Revision	By

SCALE: As Shown	DATE: SEPTEMBER 2020
DWN BY: CAG	CHK BY: AJD

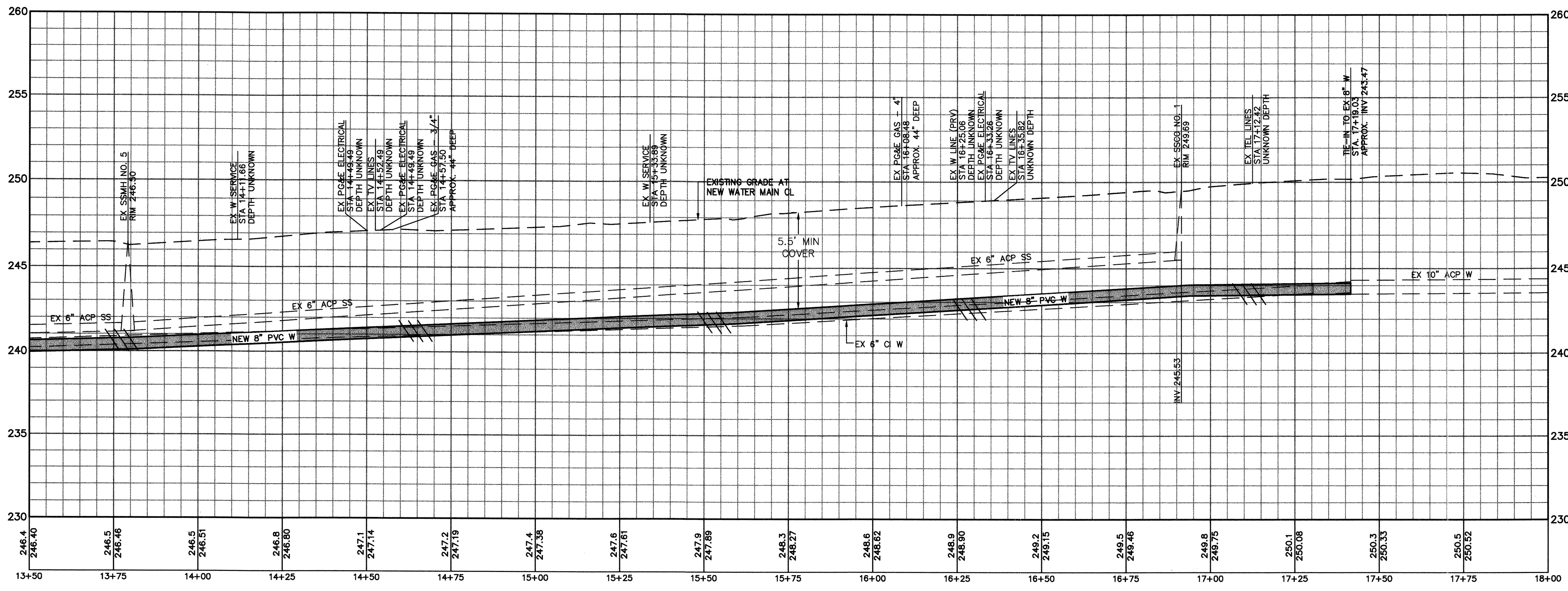
**CITY OF SANTA ROSA**  
**MONTGOMERY DRIVE**  
**WATER MAIN**  
**REPLACEMENT**  
**MONTGOMERY DR PLAN & PROFILE**  
**STA. 8+90 TO STA. 13+50**

CONTRACT NO. C001675  
 SHEET 5 OF 6  
 FILE NO. 2016-0033





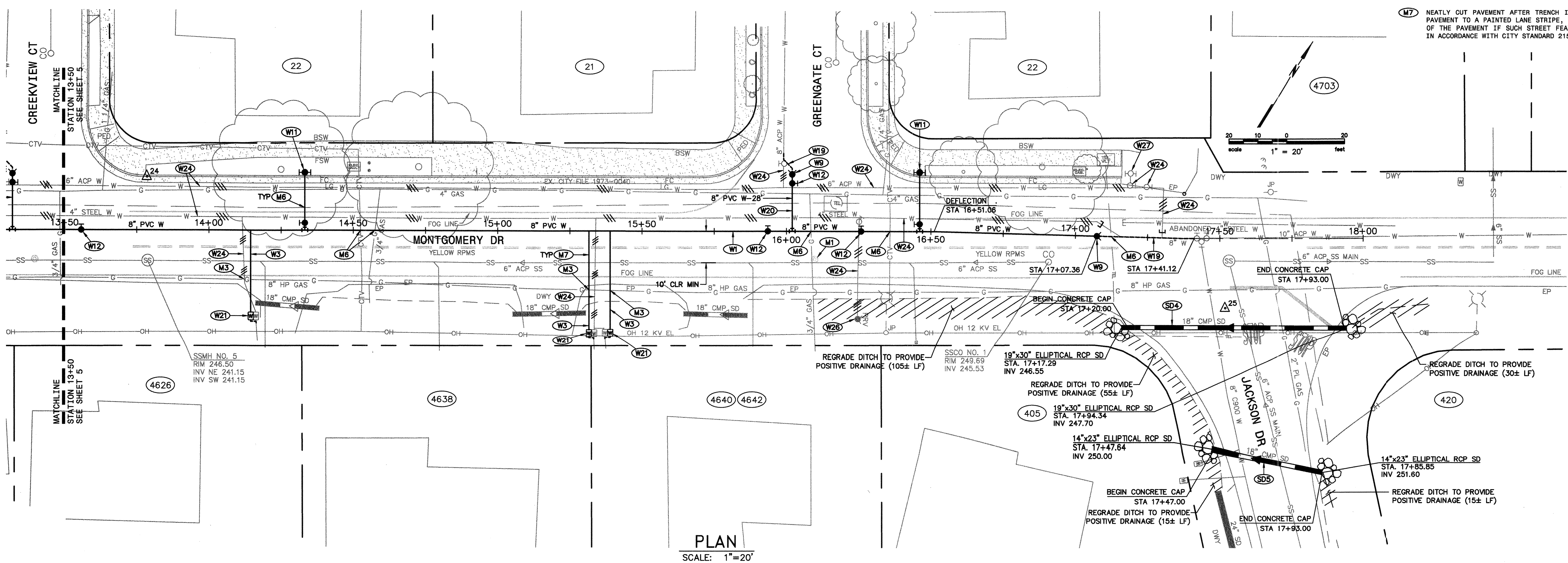
THE LOCATIONS OF EXISTING UTILITIES SHOWN ON THE PLANS ARE APPROXIMATE ONLY. THE CONTRACTOR SHALL POthOLE AND DETERMINE THE EXACT HORIZONTAL AND VERTICAL LOCATION OF ALL EXISTING UTILITIES FIVE WORKING DAYS PRIOR TO THE START OF TRENCHING AND SHALL ADJUST THE DEPTH OF THE NEW UTILITIES TO CLEAR ANY CONFLICTS AS DIRECTED BY THE ENGINEER.



MONTGOMERY DRIVE PROFILE

H: 1"=5'  
 V: 1"=1'

- WATER KEYNOTES:**
- (W1) FURNISH AND INSTALL NEW 8" PVC WATER MAIN.
  - (W3) FURNISH AND INSTALL NEW 1" HDPE WATER SERVICE PLUMBED FOR 5/8"x3/4" WATER METER IN ACCORDANCE WITH CITY STANDARD 863A. CONNECT NEW METER TO EXISTING SERVICE LINE TO BUILDING.
  - (W5) FURNISH AND INSTALL NEW TEMPORARY BLOWOFF IN ACCORDANCE WITH CITY STANDARDS.
  - (W11) FURNISH AND INSTALL NEW COMMERCIAL FIRE HYDRANT AND LATERAL ASSEMBLY IN ACCORDANCE WITH CITY STANDARD 857.
  - (W12) FURNISH AND INSTALL NEW GATE VALVE IN ACCORDANCE WITH CITY STANDARD 877.
  - (W19) AFTER SUCCESSFUL TESTING OF THE NEW WATER SYSTEM, MAKE TIE-IN TO EXISTING WATER MAIN UNDER AUTHORIZED CITY INSPECTION. IF TIE-IN IS OFFSET VERTICALLY FROM EXISTING MAIN, TIE-IN SHALL BE DIP.
  - (W20) RESTRAINED FROM TEE TO TIE-IN.
  - (W21) DUE TO EXISTING GRADE AND/OR VEGETATION, GRADING AND OR CONCRETE COLLAR MAY BE REQUIRED TO KEEP WATER METER LOCATION VISIBLE AND ACCESSIBLE.
  - (W24) REMOVE OR ABANDON EXISTING WATER SYSTEM COMPONENTS IN ACCORDANCE WITH CITY STANDARDS. REMOVE EXISTING VALVE BOXES AND RISERS AND DISPOSE OF IN ACCORDANCE WITH LOCAL REGULATIONS. ABANDON MAINS IN ACCORDANCE WITH CITY STANDARD 507.
  - (W26) REMOVE AND SALVAGE EXISTING PRESSURE REDUCING VALVE. COORDINATE WITH THE ENGINEER TO RETURN PRESSURE REDUCING VALVE TO THE WATER DEPARTMENT. REMOVE EXISTING PIPING AND DISPOSE OF IN ACCORDANCE WITH LOCAL REGULATIONS.
  - (W27) REMOVE AND SALVAGE EXISTING HYDRANT, RISER AND CHECK VALVE. CAP OR ABANDON BURY IN PLACE. RETURN HYDRANT TO CORP YARD.
- STORM DRAIN KEYNOTES:**
- (SD4) REMOVE EXISTING 24" CMP STORM DRAIN AND INSTALL NEW 19"x30" ELLIPTICAL CONCRETE PIPE. INSTALL ROCK SLOPE PROTECTION AT INLET AND OUTLET IN ACCORDANCE WITH STANDARD SPECIFICATION SECTION 72-2.03C METHOD B. SEE SHEET 2 FOR STORM DRAIN PROFILES.
  - (SD5) REMOVE EXISTING 18" CMP STORM DRAIN AND INSTALL NEW 14"x23" ELLIPTICAL CONCRETE PIPE. INSTALL ROCK SLOPE PROTECTION AT INLET AND OUTLET IN ACCORDANCE WITH STANDARD SPECIFICATION SECTION 72-2.03C METHOD B. THE ROCK SLOPE PROTECTION AT THE INLET SHALL BE REPLACED IN KIND. SEE SHEET 2 FOR STORM DRAIN PROFILES.
- MISCELLANEOUS KEYNOTES:**
- (M1) PROTECT AND PRESERVE CITY OF SANTA ROSA CENTERLINE MONUMENT.
  - (M3) CONTRACTOR IS RESPONSIBLE FOR CONTACTING PG&E FOR ON-SITE INSPECTION ANY TIME WORK IS BEING DONE WITHIN 5' OF A HIGH PRESSURE GAS LINE.
  - (M6) POT HOLE TO VERIFY DEPTH OF EXISTING UTILITIES PRIOR TO TRENCHING TO INSTALL THE PROPOSED IMPROVEMENTS.
  - (M7) NEATLY CUT PAVEMENT AFTER TRENCH IS BACKFILLED TO SUBGRADE. REMOVE ADDITIONAL PAVEMENT TO A PAINTED LANE STRIPE, LIP OF GUTTER, CURB, PAVEMENT PATCH, OR EDGE OF THE PAVEMENT IF SUCH STREET FEATURE IS WITHIN 3 FEET OF THE FINAL SAW CUT, IN ACCORDANCE WITH CITY STANDARD 215.



PLAN  
 SCALE: 1"=20'

No.	Date	Revision	By

SCALE: As Shown	DATE: OCTOBER 2020
DWN BY: CAG	CHK BY: AJD