



October 26, 2017

## SANTA ROSA COMPLETE STREETS ROAD DIET ON TRANSIT CORRIDOR

Dear Residents / Business Owners:

**PROJECT UPDATE:** Overnight paving operations are scheduled to begin Sunday, November 5<sup>th</sup>. The schedule will be dependent on the weather, and the night paving is expected to not exceed 5 nights. Work will be conducted from 8pm to 6am Sunday-Friday. Once the paving work starts, expect traffic delays, construction noise and intermittent traffic control in this area. Use alternate routes when possible.

Per our previous communication, this project is repaving Mendocino Avenue from Steele Lane to just south of Administration Drive. Additionally, there will be upgrades to the curb ramps in the area for improved access (see reverse for Project Limits).

Completion of this project is vital to the integrity of our community infrastructure. Some of the benefits this project will bring to your neighborhood include:

- Improve road surface.
- Improve accessibility by upgrading curb ramps.

Though temporary impacts to your neighborhood are inevitable, our goal is to improve our community infrastructure without creating any more disturbance than necessary. If you have special needs regarding access, or if you have any questions or concerns, please contact Lisa Welsh, Associate Civil Engineer by:

Phone: (707)543-3909 or E-mail: [LWelsh@srcity.org](mailto:LWelsh@srcity.org)

If you are aware of other occupants on your property who may not receive this notice, please share this notice with them or contact me with their address and I will notify them directly.

In addition to written communications like this, the City has created a special website where you can track the progress of this project. Simply go to [www.srcity.org/CIP](http://www.srcity.org/CIP), view the map, and click on the blue map pin that corresponds to this project. You can also view the list of all Capital Improvement Program projects and find this project under Project ID No: 01870.

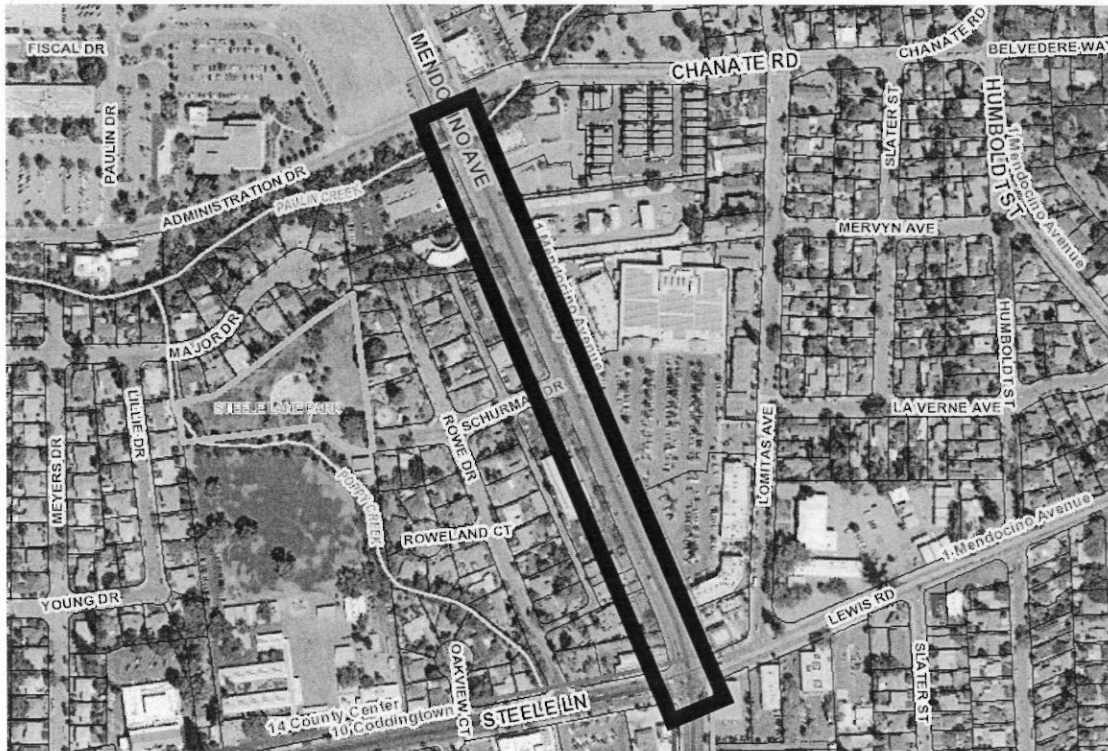
The City values your feedback. Please tell us how we did in your neighborhood by completing a post-construction survey. The survey will be delivered by a City representative to homes and businesses in close proximity to the construction site upon completion of this project. You may also access the survey online at [www.srcity.org/construction](http://www.srcity.org/construction).

Sincerely,

LISA WELSH  
Associate Civil Engineer



**Santa Rosa Complete Streets Road Diet on Transit Corridor**  
**(TIP ID: SON130017)**



Mendocino Ave from Steele Ln to Administration Dr