



January 13, 2023

LOS ALAMOS TRUNK REPLACEMENT: STREAMSIDE DR TO ELAINE DR

Dear Residents:

The City of Santa Rosa is finalizing construction plans to replace approximately 5,500 linear feet of the existing Los Alamos trunk sewer that was installed in the 1950's and is undersized and in poor condition. The new pipe will be 24-inch diameter PVC. It will generally be installed adjacent to the existing alignment. Relocation of small portions of the water main will be necessary in certain locations to create adequate separation from proposed sewer line. Construction will begin at Streamside Drive and progress eastward to Elaine Dr.

To reduce impacts on traffic and businesses, the work on Mission Circle and across Mission Blvd will be performed at night between 8 PM and 5 AM. The construction work at night will produce typical construction equipment noise and is anticipated to last 2 to 3 weeks initially, followed a couple of months later by paving work at night in the same area. The remainder of the work will occur during the day. As the work progresses to the east (during the day) along Quigg Drive, lane closures and detours will be required that will impact traffic so please allow more time for your trips. The project is anticipated to take APPROXIMATELY 1 YEAR AND 3 MONTHS, with an estimated start date of EARLY SPRING 2023 (see reverse for Project Limits).

Completion of this project is vital to the integrity of our community infrastructure. Some of the benefits this project will bring to your neighborhood include:

- Upgraded pipe materials help to improve the sewer and water system's performance.
- New sewer lines help to (1) reduce the potential for blockages due to tree root intrusion and significantly reduce the need for repairs, and (2) reduce groundwater infiltration into the sewer system, which helps maintain the effectiveness of our Wastewater Treatment Plant.
- New water lines help to protect your home and property by improving water flows and pressure to fire hydrants.
- After installation of the sewer and water improvements, the streets will be re-paved and pedestrian ramps will be improved where upgrades are needed.

Though temporary impacts to your neighborhood are inevitable, our goal is to improve our community infrastructure without creating any more disturbance than necessary. The Contractor will be advised that daily and weekly activities such as mail delivery and garbage service must continue during the project. Please feel free to contact me at (707)543-3878 (or e-mail at awilt@srcity.org) if you have any questions or concerns.

We will update you with another letter approximately two weeks prior to the start of construction. In addition to written communications like this, the city has a special website where you can track the progress of this project. Simply go to www.srcity.org/CIP, view the map, and click on the blue map pin that corresponds to this project. You can also view the list of all Capital Improvement Program projects and find this project under Project ID No: 01903.

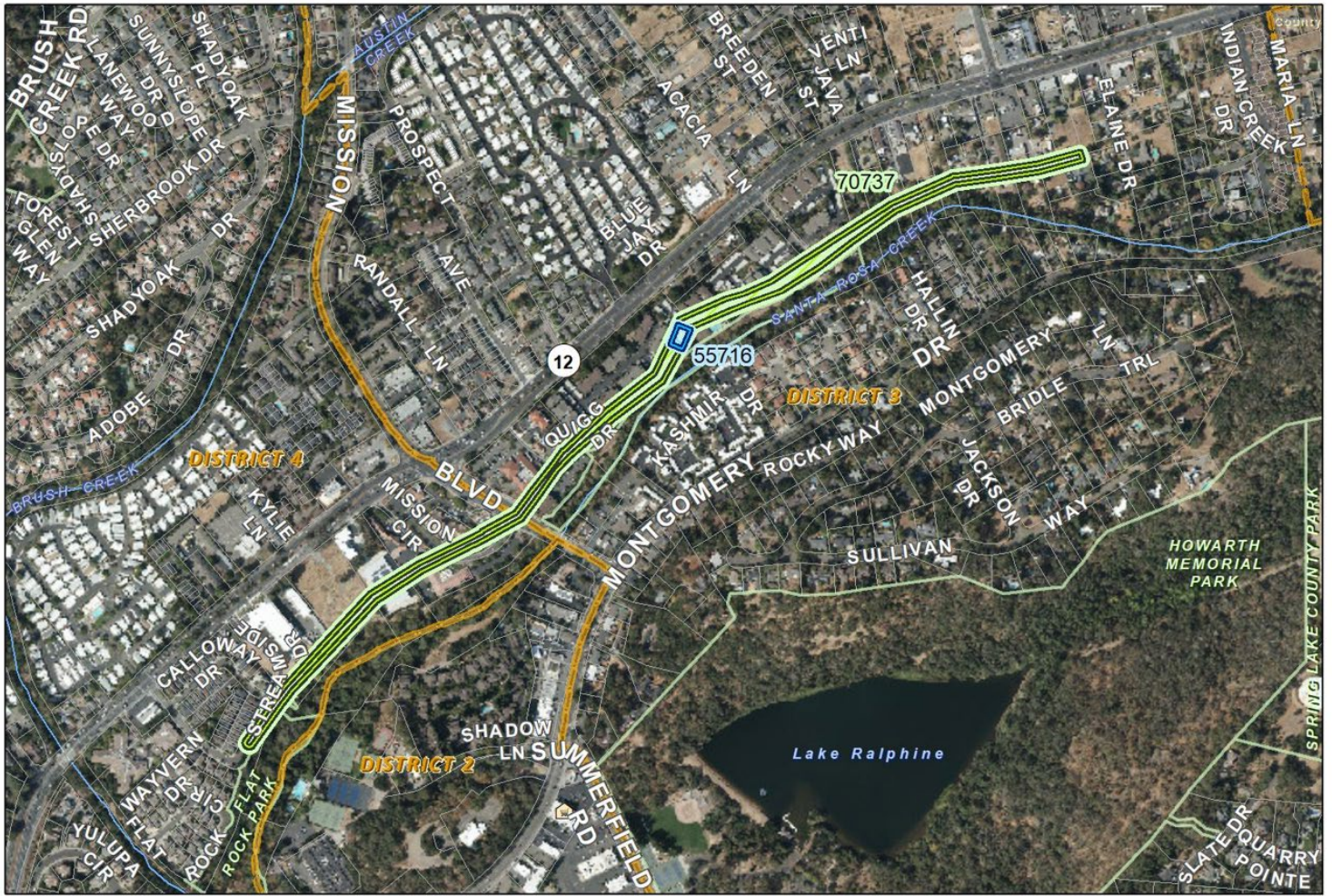
Sincerely,

Andrew Wilt

Andrew Wilt (Jan 17, 2023 16:40 PST)

ANDREW WILT

Associate Civil Engineer



Project Number: 1903
Los Alamos Trunk Replacement: Streamside Dr to Elaine Dr
 Project Status: Design

Project Areas (JL Keys labeled)
 Water Sewer

0 100 200 400 600 800 1,000 1,200 1,400 Feet

City (2022) & County (2021) Aerials shown.
 Map Date: 1/10/2023

- Information and features shown on this map are intended for general location use only and may contain errors. Map produced by City of Santa Rosa, Asset Management Division. -

