



November 3, 2020

**MONTGOMERY DR AND SOTOYOME ST SIGNAL MODIFICATION**  
**Project ID No: 01908**

Dear Resident:

The City of Santa Rosa is finalizing construction plans to modify the traffic signal at Montgomery Drive and Sotoyome Street. The project is anticipated to take ten weeks, with an estimated start date in the spring/summer of 2021 (see reverse for Project Limits).

Completion of this project is vital to the integrity of our community infrastructure and will:

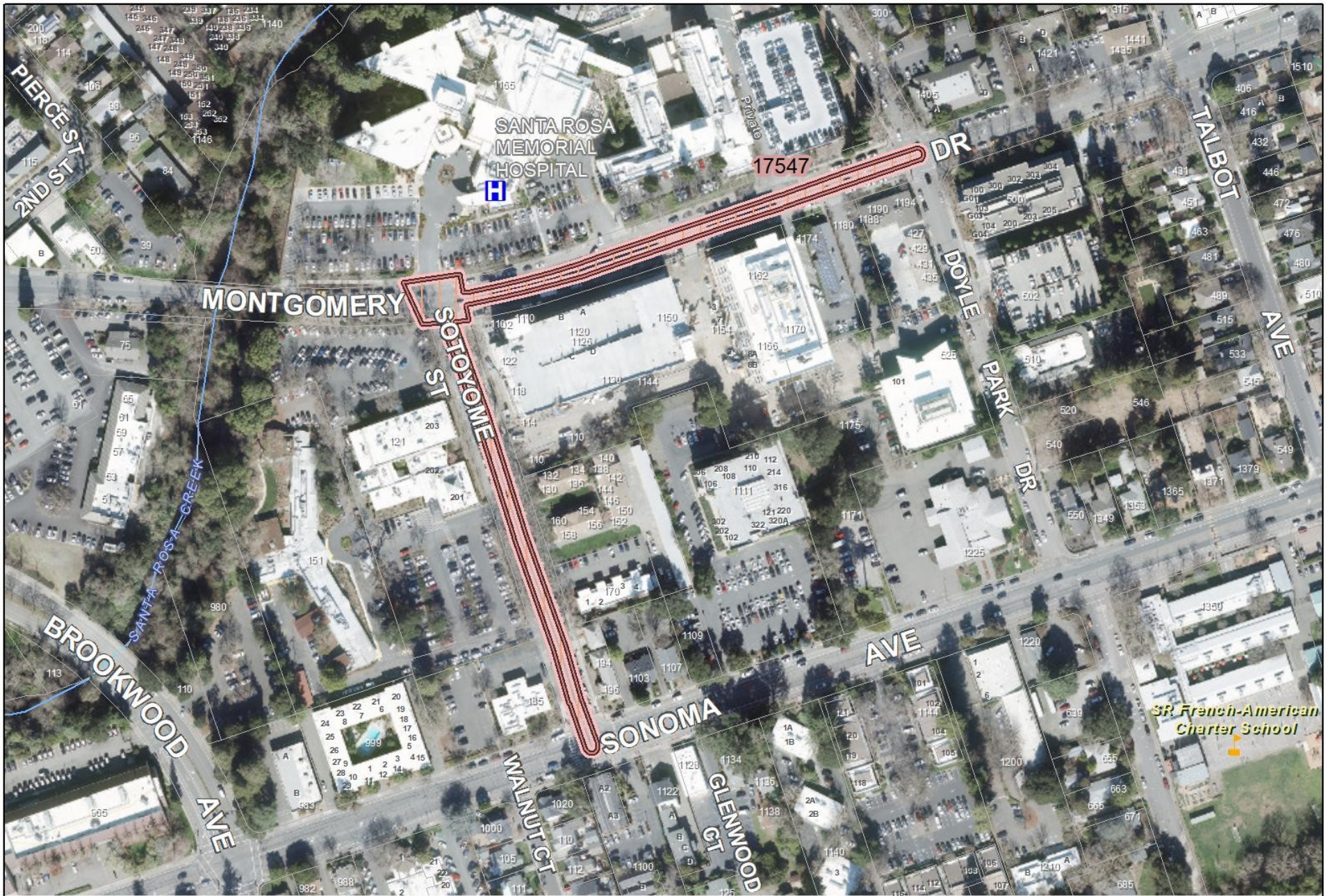
- Upgrade the traffic signal to current standards
- Upgrade pedestrian ramps to current ADA standards
- Improve traffic flows and signal network communication

Though temporary impacts to the area are inevitable, our goal is to improve our community infrastructure without creating any more disturbance than necessary. The Contractor will be advised that daily and weekly activities such as mail delivery and garbage service must continue during the project. Please feel free to contact me at (707) 543-4508 (or e-mail at [gbailey@srcity.org](mailto:gbailey@srcity.org)) if you have any questions or concerns.

We will update you with another letter approximately two weeks prior to the start of construction. In addition to written communications like this, the City has created a special website where you can track the progress of this project. Simply go to [www.srcity.org/CIP](http://www.srcity.org/CIP), view the map, and click on the blue map pin that corresponds to this project. You can also view the list of all Capital Improvement Program projects and find this project under Project ID No: 01908.

Sincerely,

GRANT BAILEY, P.E.  
Associate Civil Engineer



**Project Number: 1908**

Montgomery Dr and Sotoyome St Signal Modification

Project Status: Design

Project Areas (IFAS Charge #'s Labeled)

 Public Works



0 100 200 400 Feet City (2020) & County (2018) Aerials shown. Map Date: 11/4/2020

- Information and features shown on this map are intended for general location use only and may contain errors. Map produced by City of Santa Rosa, Asset Management Division. -