

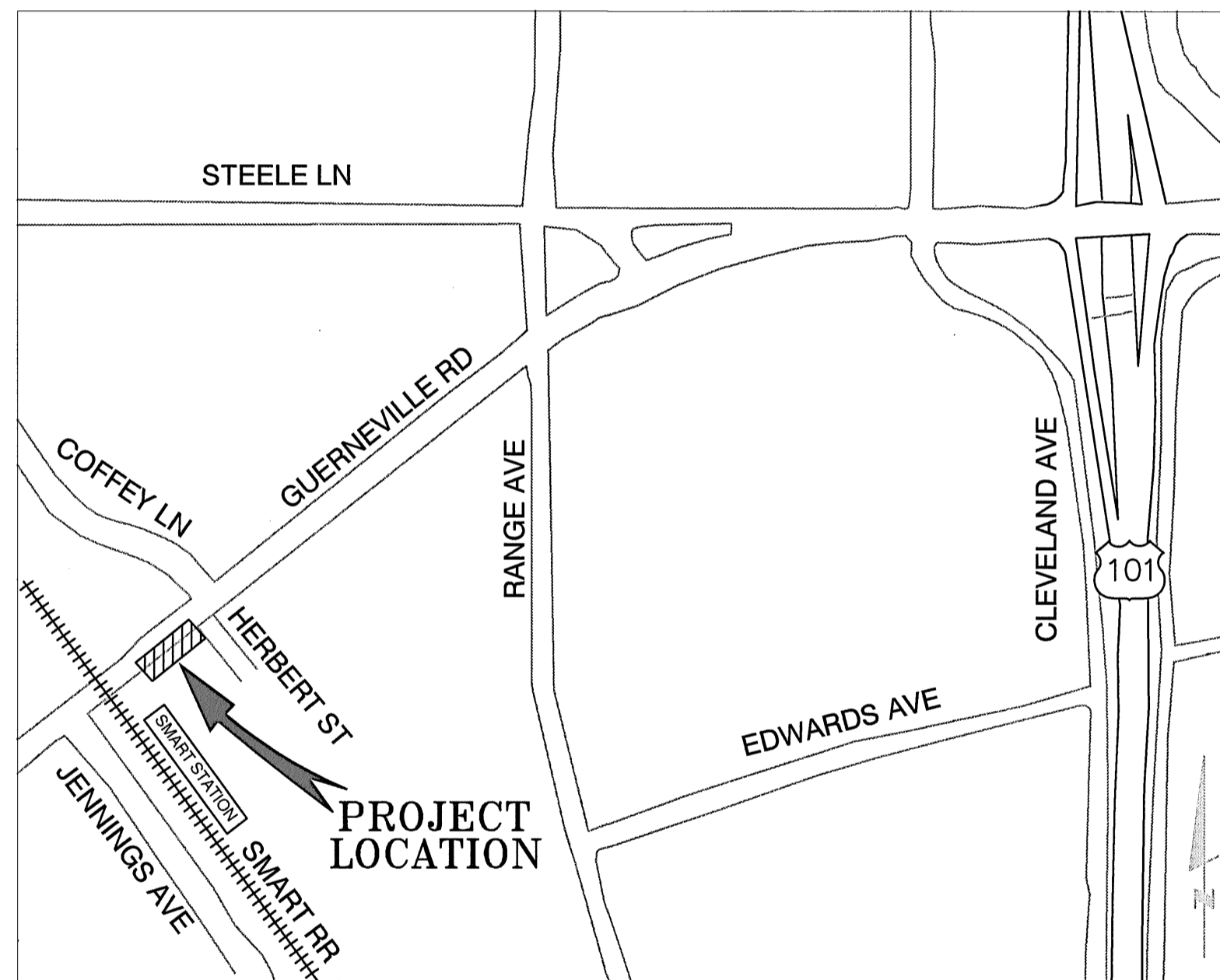


CITY OF SANTA ROSA

IMPROVEMENT PLANS FOR

SMART BUS TURNOUT GUERNEVILLE RD

CONTRACT No. C01964

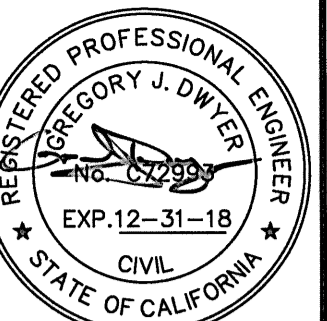


RECORD PLAN DATA	
PROJECT START:	WATER SERVICE TYPE:
PROJECT END:	MANUFACTURER:
GEN. CONTRACTOR:	FIRE HYDRANT TYPE:
SUPERINTENDENT:	MANUFACTURER:
UNDERGROUND CONTRACTOR:	INSPECTOR:
FOREMAN:	CONSTRUCTION MANAGER:
SEWER PIPE TYPE:	RECORD PLANS BY:
SEWER FITTINGS MANUFACTURER:	ADDITIONAL INFO:
M.H. MANUFACTURER:	
WATER PIPE TYPE:	
WATER VALVE MANUFACTURER:	
WATER FITTINGS MANUFACTURER:	

INDEX TO SHEETS

Sheet No.	Title
1.	Cover
2.	General Notes, Abbreviations, Legend & Typical Cross Section
3.	Plan & Profile STA: 1+00 to 3+23
4.	Horizontal Control Plan

BEFORE EXCAVATING
CALL U.S.A.
UNDERGROUND SERVICE ALERT
811
TWO WORKING DAYS BEFORE ALL
PLANNED WORK OPERATIONS

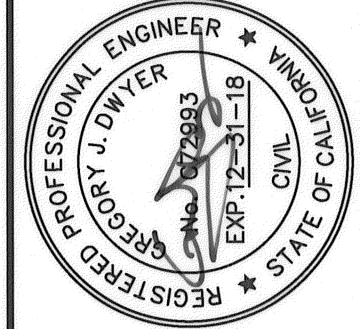


Design/Const	By	Date
Survey		
TPW Field Svcs		
Utilities Op's		
Traffic		
Transit		
Storm Water		
	Signature	Date

SCALE: AS SHOWN DATE: MAY 2017
DWN BY: GL CHK BY: GD
APPROVED: Deputy Director - Engineering
By: *A. Ferguson* Date: 5/16/2017
Colleen Ferguson

CITY OF SANTA ROSA
SMART BUS TURNOUT
COVER

CONTRACT NO.
C01964
SHEET 1 OF 4
FILE NO. 2016-0029



NO.	DATE	REVISION

DATE: MAY 2017
 SCALE: AS SHOWN
 DWG BY: GL
 CHK BY: GD
 APPROVED: Deputy Director - Engineering
 By: *Colleen Ferguson* Date: 5/20/17

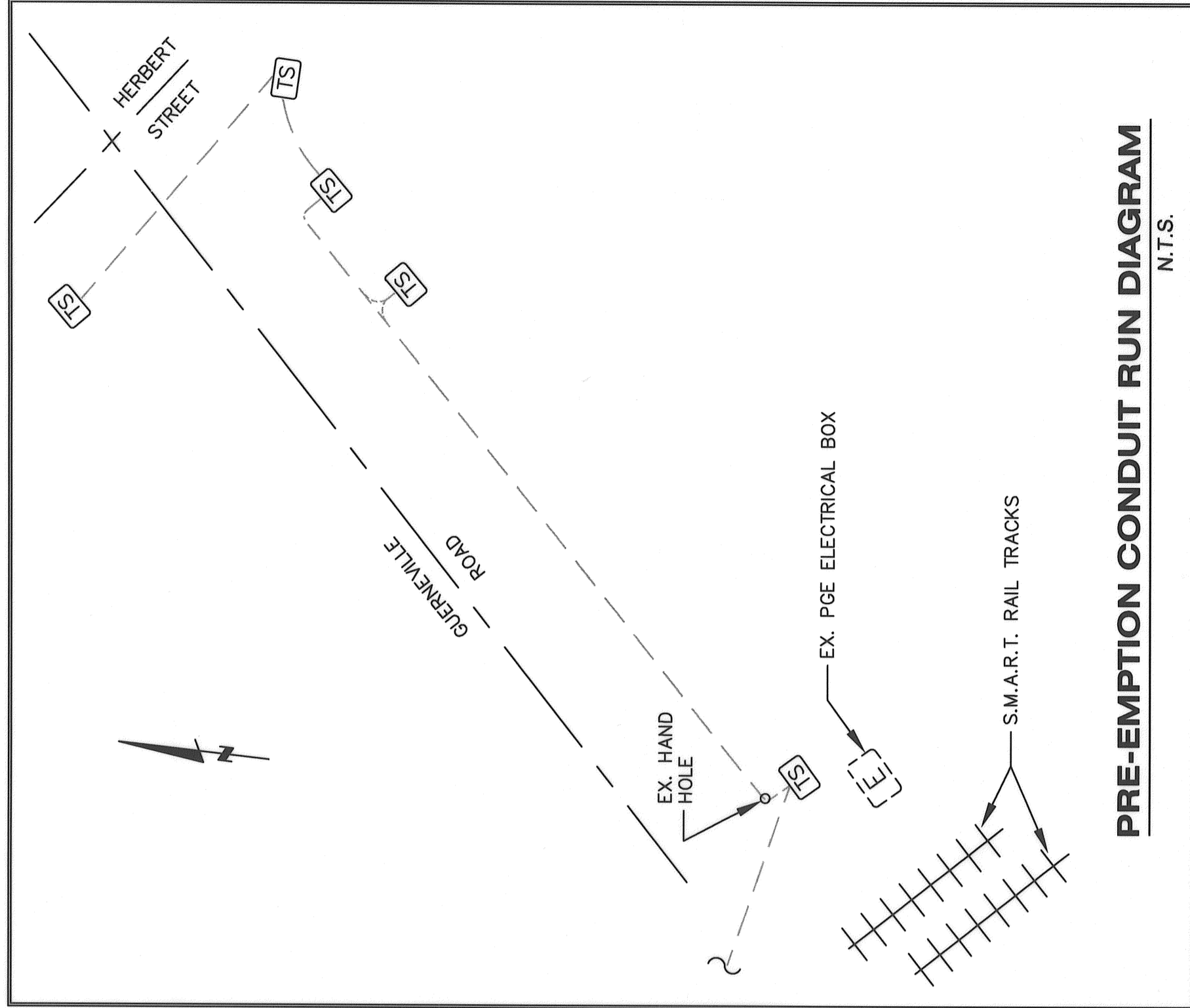
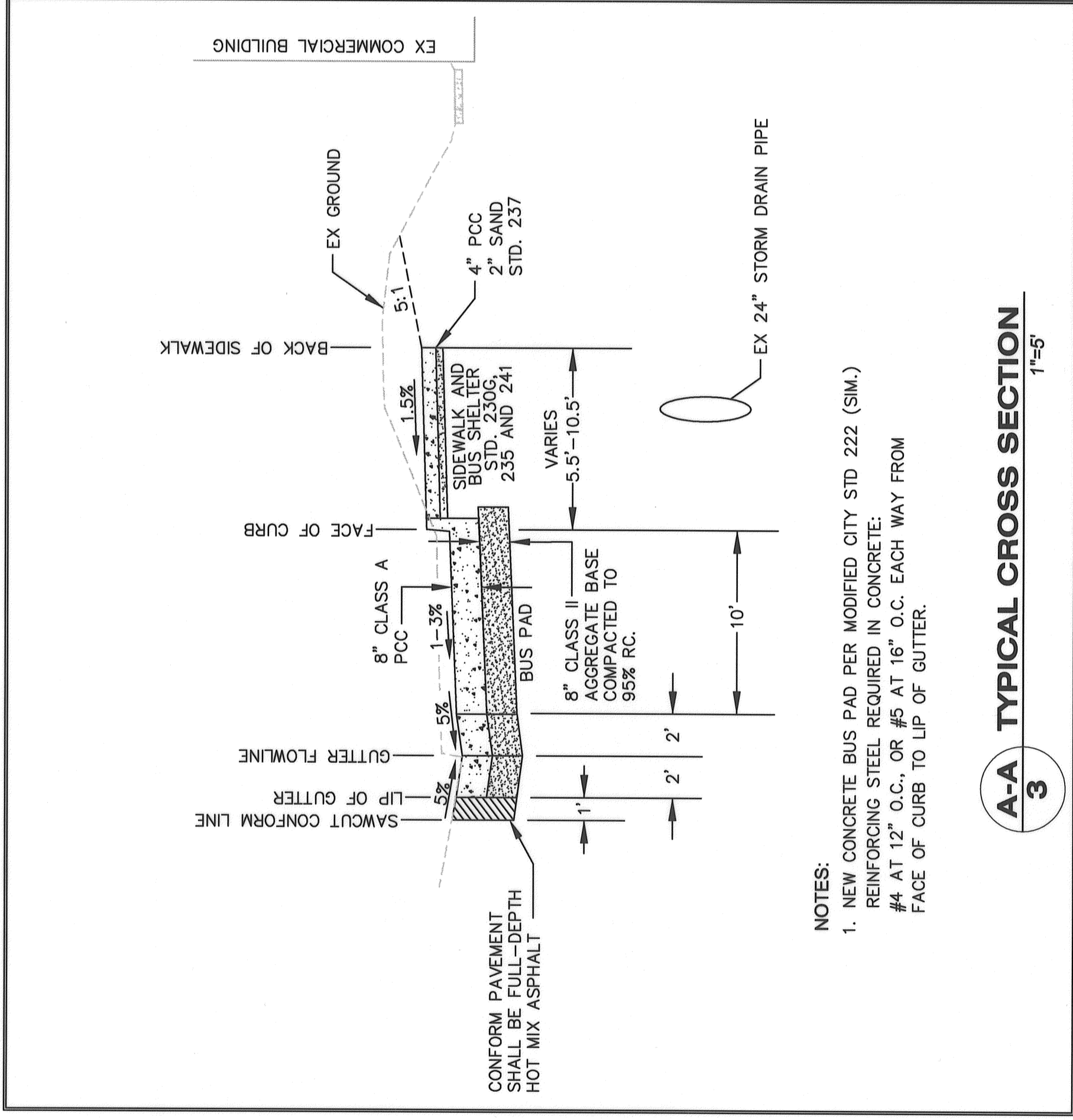
CITY OF SANTA ROSA
SMART BUS TURNOUT
GENERAL NOTES, ABBREVIATIONS, LEGEND
 & TYPICAL CROSS SECTION,
 CONTRACT NO. C01964
 SHEET 2 OF 4
 FILE NO. 2016-0029

GENERAL NOTES

- ALL WORKMANSHIP, MATERIALS AND CONSTRUCTION SHALL CONFORM TO THE CITY OF SANTA ROSA STANDARD PLANS, THE CONSTRUCTION SPECIFICATIONS FOR PUBLIC IMPROVEMENTS, THE SPECIAL PROVISIONS FOR THIS PROJECT AND THE STATE STANDARD SPECIFICATIONS AND STANDARD PLANS. THE CONTRACTOR IS RESPONSIBLE FOR UNDERSTANDING ALL STANDARDS PERTAINING TO THIS PROJECT.
- THE CONTRACTOR SHALL CALL UNDERGROUND SERVICE ALERT (USA) AT 1-800-227-2600 NO LESS THAN 2 WORKING DAYS PRIOR TO ANY EXCAVATION FOR MARK OUTS OF EXISTING UNDERGROUND FACILITIES IN ACCORDANCE WITH SECTION 5-1.36E OF THE SPECIAL PROVISIONS.
- THE LOCATIONS OF UNDERGROUND UTILITIES AND OTHER OBSTACLES SHOWN ON THE PLANS ARE BASED ON THE BEST AVAILABLE INFORMATION. THE CONTRACTOR SHALL POTHOLE AND DETERMINE THE EXACT LOCATION OF ALL POTENTIAL CONFLICTS IN ACCORDANCE WITH U.S.A. LAWS AND THESE SPECIAL PROVISIONS AND THE STANDARD SPECIFICATIONS. IF ANY UNMARKED UTILITIES ARE ENCOUNTERED, OR IF UNABLE TO LOCATE A MARKED UTILITY AFTER POT HOLING, THE CONTRACTOR SHALL IMMEDIATELY NOTIFY THE OWNER OF THAT UTILITY AND THE ENGINEER. PER SECTION 15-7 OF THE SPECIAL PROVISIONS.
- ALL SEWER MANHOLES, MAINLINE CLEANOUTS AND WATER VALVES THAT ARE ON ACTIVE SYSTEMS SHALL BE ACCESSIBLE TO CITY PERSONNEL AT ALL TIMES AND SHALL BE BROUGHT TO GRADE WITHIN 48 HOURS OF PAVING. PER SECTION 15-2.10B OF THE SPECIAL PROVISIONS.
- THE CONTRACTOR SHALL PROTECT AND PRESERVE CITY MONUMENTS. THE CONTRACTOR SHALL COORDINATE WITH THE CITY ENGINEER 10 WORKING DAYS IN ADVANCE FOR REFERENCING OF EXISTING MONUMENTS TO BE DISTURBED. THE CONTRACTOR SHALL RECONSTRUCT DISTURBED MONUMENTS IN ACCORDANCE WITH CITY STANDARD 280.
- OVERHEAD UTILITY SERVICE DROPS ARE NOT SHOWN ON THE PLANS. THE CONTRACTOR SHALL INVESTIGATE THE SITE AND BE AWARE OF LIMITED CLEARANCES UNDER OVERHEAD UTILITY LINES AND LOW HANGING TREE BRANCHES. THE CONTRACTOR'S TRUCKS AND EXCAVATION EQUIPMENT SHALL BE SIZED SO THAT OVERHEAD WIRES AND TREE BRANCHES ARE NOT DAMAGED.
- ALL EXCAVATED MATERIAL SHALL BE DISPOSED OF AS GENERATED AND AT NO TIME SHALL THE CONTRACTOR PLACE EXCAVATED MATERIAL AT THE WORK SITE. PER SECTION 71-1.03 OF THE SPECIAL PROVISIONS.
- THE CONTRACTOR SHALL ONLY REMOVE EXISTING TREES OR SHRUBS AS NOTED ON THE PLANS OR AS DIRECTED BY THE ENGINEER.
- FOR CLARITY OF EXISTING SUBSURFACE CONDITIONS, NOT ALL CROSSWALKS, STOP BARS, OR EXISTING PAVEMENT MARKINGS ARE SHOWN ON THE PLANS. ALL TRAFFIC STRIPES, RAISED PAVEMENT MARKERS AND PAVEMENT MARKINGS DAMAGED BY THE CONTRACTOR SHALL BE REPLACED. CROSSWALKS, CHANNELIZING LINES AND LEGENDS SHALL BE REPLACED IN THEIR ENTIRETY. FOR EXAMPLE, IF 5' OF A CROSSWALK IS TRENCHED THROUGH, THE ENTIRE LENGTH OF THE CROSSWALK SHALL BE REPLACED. PATCHING OF DAMAGED MARKINGS (NON-REFLECTIVE) MARKERS MUST BE CERAMIC. ANY DAMAGED TAPE WILL BE REMOVED AND REPLACED WITH THERMOPLASTIC. ALL WORK PER CITY OF SANTA ROSA TRAFFIC STANDARDS PART III, TRAFFIC MARKINGS.

DESCRIPTION	EXISTING	NEW
GAS MAIN & GAS VALVE		
STORM DRAIN, MANHOLE & CATCH BASIN		
IRRIGATION CONTROL VALVE BOX & SERVICE		
SEWER MAIN, MANHOLE & CLEAN OUT		
STREET LIGHT/ELECTRICAL CONDUIT & BOXES		
TRAFFIC SIGNAL PULL BOX		
STREET LIGHT & TRAFFIC SIGNAL		
JOINT POLE AND GUY ANCHOR		
OVERHEAD UTILITIES		
SURVEY CONTROL POINT		
SIGN		
FENCE		
LIMITS OF NEW SIDEWALK AND MID BLOCK BUS STOP		
PROPERTY LINE		

ABBREVIATIONS	MONUMENT
AC	ASPHALT CONCRETE
ANG	ANGLE
BC	BEGIN CURVE
C	CONDUIT
CL	CENTERLINE
DIWY	DRIVEWAY
(E)	EAST
EX	EXISTING
EG	EXISTING GROUND
ELEC	ELECTRICAL
ELEV	ELEVATION
FC	FACE OF CURB
FG	FINISHED GRADE
FL	FLOWLINE
FT	FOOT or FEET
HORIZ	HORIZONTAL
LF	LINEAL FOOT
LT	LEFT
MIN	MINIMUM
MON	MONUMENT
(N)	NORTH
OH	OVERHEAD
PCC	PORTLAND CEMENT CONCRETE
PGE	PACIFIC GAS & ELECTRIC
PRC	POINT OF REVERSE CURVE
RC	RELATIVE COMPACTION
RR	RAILROAD
R/W	RIGHT OF WAY
RT	RIGHT
SCWA	SONOMA COUNTY WATER AGENCY
SD	STORM DRAIN
SIM.	SIMILAR
SMART	SONOMA-MARIN AREA RAIL TRANSIT
STA	STATION
STD	STANDARD
TYP	TYPICAL
VERT	VERTICAL
(W)	WEST



A-A TYPICAL CROSS SECTION
 1'-5'

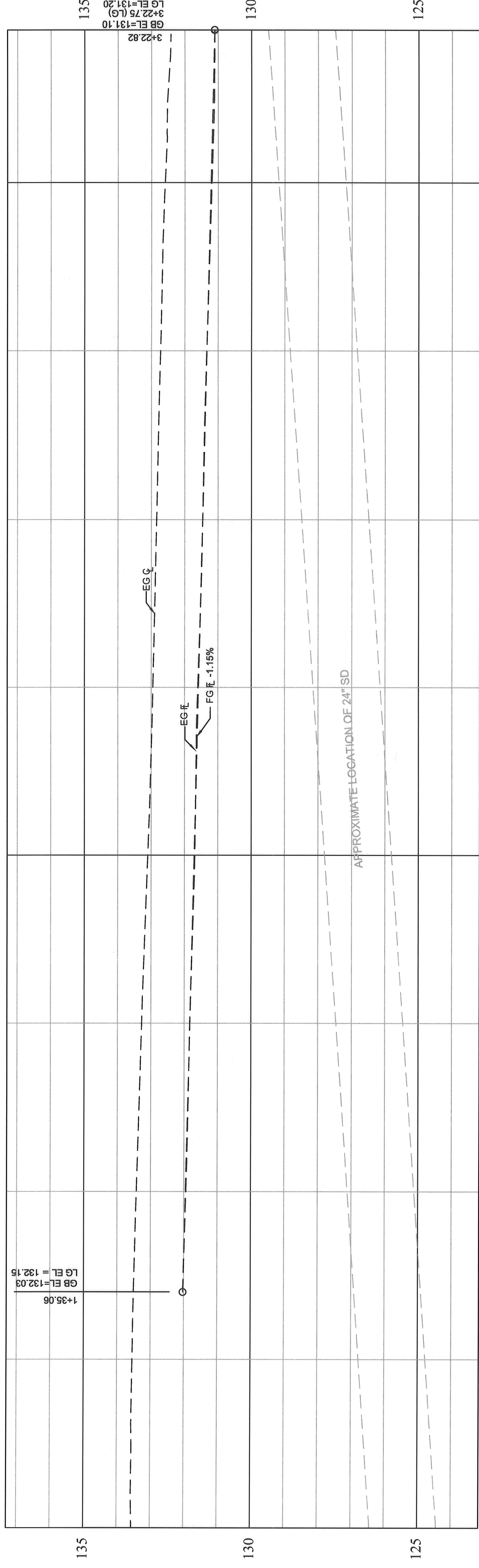
CONSTRUCTION NOTES

- 1 SAWCUT 1' BEYOND EXISTING LIP OF GUTTER AND REMOVE CURB, GUTTER AND SIDEWALK.
- 2 REMOVE EXISTING TRAFFIC SIGNAL PULL BOX. SEE NOTE 10 FOR RELATED WORK.
- 3 PG&E SERVICE LINES TO BE RELOCATED BY PG&E.
- 4 REMOVE EXISTING SHRUB, INCLUDING ALL ROOTS UNDER PROPOSED SIDEWALK. BACKFILL AND COMPACT. TYP OF 2.
- 5 PG&E POLE TO BE RELOCATED BY PG&E.
- 6 INSTALL #6 "SERVICE" PULL BOX PER CITY STD. 601 & 603B.
- 7 RELOCATE STREET LIGHT POLE PER CITY STD. 610 & 620A. ALL ELECTRICAL WORK INCLUDING CONDUIT PLACEMENT SHALL BE PERFORMED BY A LICENSED ELECTRICAL CONTRACTOR TO NEW STREET LIGHT POLE LOCATION. THE CONDUCTOR CANNOT BE SPLICED.
- 8 CONSTRUCT PCC SIDEWALK PER CITY STD. 233, 235, TYPICAL CROSS SECTION A-A ON SHEET 2, AND AS MODIFIED BY DIMENSIONS AND CROSS SLOPES SHOWN ON SHEET 4.

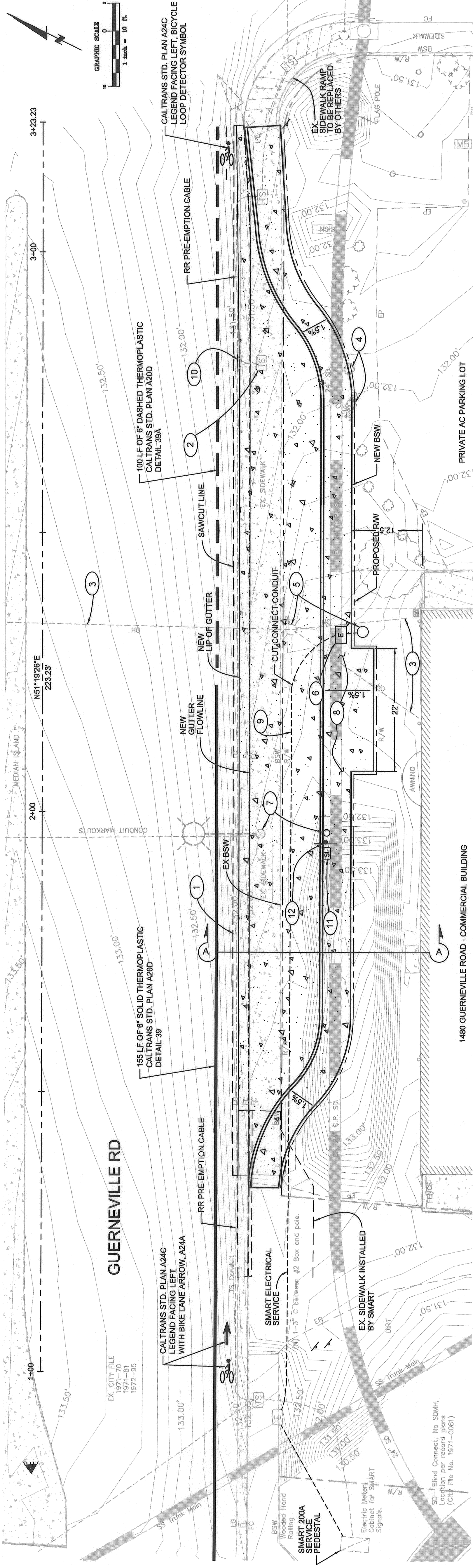
- 9 ALL ELECTRICAL WORK INCLUDING CONDUIT PLACEMENT SHALL BE PERFORMED BY A LICENSED ELECTRICAL CONTRACTOR.
- 10 POT HOLE AS NEEDED TO DETERMINE THE LOCATION OF SMART'S ELECTRICAL SERVICE. CONTRACTOR SHALL COORDINATE WITH PG&E AND SMART TO PERFORM THIS WORK. CONTRACTOR SHALL OBTAIN A PERMIT FROM SMART AS NEEDED TO PERFORM WORK WITHIN THEIR RIGHT OF WAY. LOWER CONDUIT AS NEEDED PER CURRENT PG&E STANDARDS. CUT CONNECT CONDUIT AND PULL NEW CABLE TO NEW PG&E POLE LOCATION. EXISTING CABLE CANNOT BE SPLICED.

- 10 ALL ELECTRICAL WORK INCLUDING CONDUIT PLACEMENT SHALL BE PERFORMED BY A LICENSED ELECTRICAL CONTRACTOR. CONTRACTOR SHALL DISCONNECT THE EXISTING RR PRE-EMPTION CABLE AND PULL THROUGH THE CONDUIT. THE EXISTING PRE-EMPTION CABLE IS A NEW 11 CONDUCTORS AT 14 GA. AND 1 CONDUCTOR @ 12 GA. WITH NO SPLICES. SEE SHEET 2 FOR CONDUIT RUN. ANY DAMAGE TO THIS CABLE SHALL BE THE RESPONSIBILITY OF THE CONTRACTOR TO REPLACE AT THEIR COST. CONTRACTOR SHALL CUT AND CONNECT NEW CONDUIT AS NEEDED AND REPULL THE CABLE. CONTRACTOR SHALL COORDINATE DISCONNECTION OF THE RR PRE-EMPTION CABLE WITH SMART AND CITY OF SANTA ROSA TRAFFIC ENGINEERING.

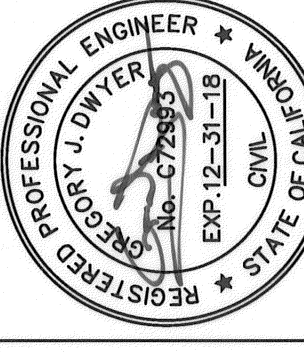
- 11 INSTALL #5 "STREET LIGHT" PULL BOX PER CITY STD. 601
- 12 INSTALL BUS SIGN POLE PER CITY STD 701. BUS STOP SIGN SHALL BE PROVIDED BY THE CITY AND INSTALLED BY THE CONTRACTOR.



PROFILE VIEW
HORIZONTAL: 1" = 10'
VERTICAL: 1" = 2'



PLAN VIEW
1"=10'



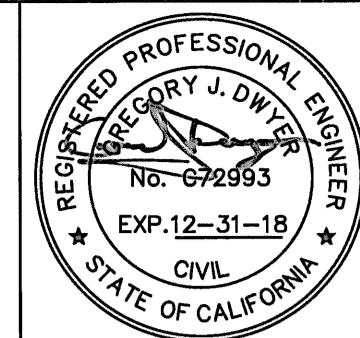
City of
Santa Rosa

NO.	DATE	REVISION	BY

SCALE: AS SHOWN
DATE: MAY 2017
DWN BY: GL
CHK BY: GD
APPROVED: Deputy Director - Engineering
By: *Colleen Ferguson*
Date: 5/30/2017

CITY OF SANTA ROSA
SMART BUS TURNOUT
PLAN & PROFILE
STA: 1+00 TO STA: 3+23

CONTRACT NO.
C01964
SHEET 3 OF 4
FILE NO. 2016-0029



CURB AND BSW LINE TABLE

LINE#	LENGTH	DIRECTION
L1	1.86'	S51° 25' 29"W
L2	17.90'	S45° 01' 04"W
L3	6.40'	N42° 19' 47"W
L4	17.90'	N47° 51' 09"E
L5	43.92'	N51° 20' 55"E
L6	4.00'	S38° 38' 32"E
L7	22.00'	N51° 20' 55"E
L8	4.00'	S38° 38' 32"E
L9	44.08'	N51° 20' 55"E
L10	5.29'	N38° 40' 34"W
L11	1.92'	N38° 40' 34"W
L12	187.68'	S51° 20' 55"W
L13	1.40'	N42° 19' 47"W
L14	110.00'	N51° 20' 55"W

LAYOUT CONTROL LINE COORDINATES

STATION	NORTHING	EASTING	BEARING	DISTANCE
1+00	1928769.640	6350634.566		
3+23.23	1928909.140	6350808.839	N51°19'25.92"E	223.23'

CURB AND BSW CURVE TABLE

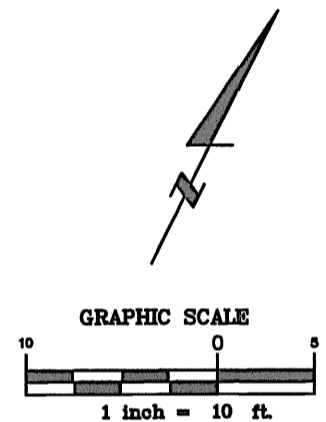
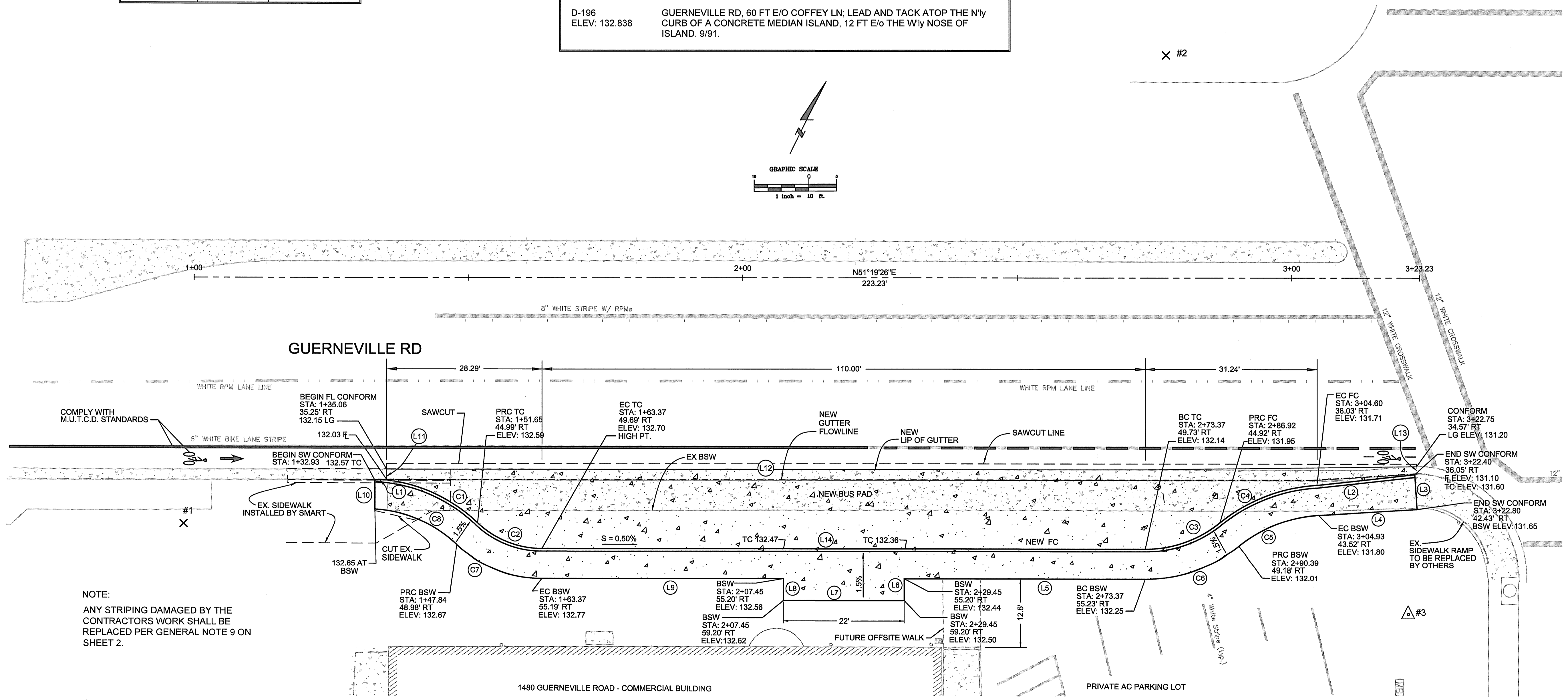
CURVE#	LENGTH	DELTA	RADIUS
C1	18.91'	37° 21' 29"	29.00
C2	12.93'	43° 34' 11"	17.00
C3	14.68'	39° 07' 40"	21.50
C4	19.28'	35° 38' 17"	31.00
C5	15.86'	35° 38' 17"	25.50
C6	18.44'	39° 07' 40"	27.00
C7	17.11'	43° 34' 11"	22.50
C8	16.59'	40° 27' 09"	23.50

SURVEY CONTROL DATA

POINT	NORTHING	EASTING	ELEVATION	DESCRIPTION
#1 X	1928726.058	6350647.986	133.07	CHISLED X
#2 X	1928903.992	6350736.184	131.90	CHISLED X
#3 Δ	1928850.372	6350834.025	131.85	PK NAIL

BENCHMARK LEVEL DATA

D-197 ELEV: 128.140	COFFEY LANE, 200 FT N/O PLATA; LEAD AND TACK IN TOP OF CURB, E/S COFFEY LN, 13 FT S/O BLDG #2616. 4/82.
D-196 ELEV: 132.838	GUERNEVILLE RD, 60 FT E/O COFFEY LN; LEAD AND TACK ATOP THE N'y CURB OF A CONCRETE MEDIAN ISLAND, 12 FT E/O THE W'y NOSE OF ISLAND. 9/91.



NOTE:
ANY STRIPING DAMAGED BY THE CONTRACTORS WORK SHALL BE REPLACED PER GENERAL NOTE 9 ON SHEET 2.

NO.	DATE	REVISION	BY

SCALE: 1" = 10'
DATE: MAY 2017
DWN BY: GL
CHK BY: GD
APPROVED: Deputy Director - Engineering
By: *Colleen Ferguson* Date: 5/30/2017

CITY OF SANTA ROSA
SMART BUS TURNOUT
HORIZONTAL CONTROL PLAN
CONTRACT NO. C01964
SHEET 4 OF 4
FILE NO. 2016-0029