



CITY OF SANTA ROSA

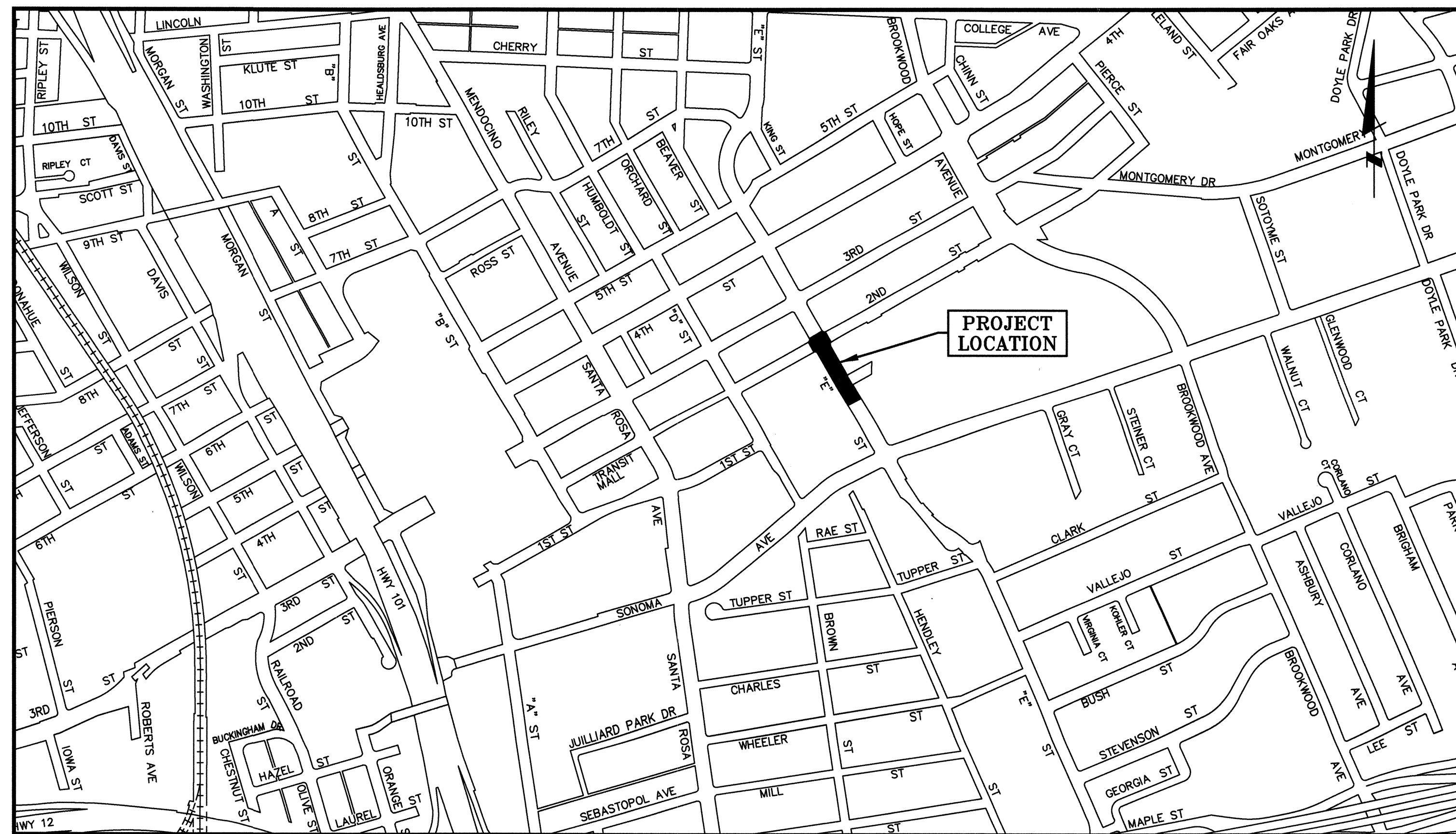
IMPROVEMENT PLANS FOR

E ST SEWER REPLACEMENT 2ND ST TO SANTA ROSA CREEK

CONTRACT No. C01996



VICINITY MAP
NOT TO SCALE



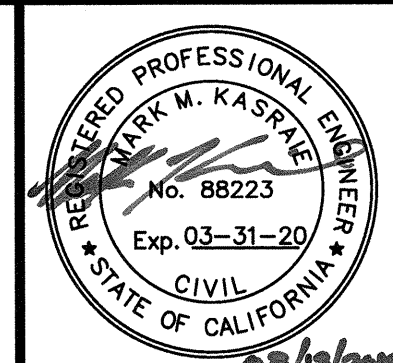
LOCATION MAP
SCALE: 1"=500'

BEFORE EXCAVATING
CALL U.S.A.
UNDERGROUND SERVICE ALERT
800-227-2600
TWO WORKING DAYS BEFORE ALL
PLANNED WORK OPERATIONS

INDEX TO SHEETS

Sheet No.	Title
1.	COVER SHEET
2.	NOTES AND ABBREVIATIONS
3.	E ST - PLAN AND PROFILE

RECORD PLAN DATA	
PROJECT START: _____	WATER SERVICE TYPE: _____
PROJECT END: _____	MANUFACTURER: _____
GEN. CONTRACTOR: _____	FIRE HYDRANT TYPE: _____
SUPERINTENDENT: _____	MANUFACTURER: _____
UNDERGROUND CONTRACTOR: _____	INSPECTOR: _____
FOREMAN: _____	CONSTRUCTION MANAGER: _____
SEWER PIPE TYPE: _____	RECORD PLANS BY: _____
MANUFACTURER: _____	ADDITIONAL INFO: _____
SEWER FITTINGS MANUFACTURER: _____	_____
WATER PIPE TYPE: _____	_____
MANUFACTURER: _____	_____
WATER VALVE MANUFACTURER: _____	_____
WATER FITTINGS MANUFACTURER: _____	_____



Design/Const	Survey	IPW Field Svc's	Water Op's	Traffic	Materials Lab	DEPT.	BY	REVISION	NO.	DATE	SIGNATURE	DATE

SCALE: AS SHOWN DATE: AUGUST 2018
 DWN BY: RSI/MMK CHK BY: MMK
 APPROVED: Deputy Director - Engineering
 By: *[Signature]* Date: 8/14/18

GENERAL NOTES

- 1. ALL WORKMANSHIP, MATERIALS AND CONSTRUCTION SHALL CONFORM TO THE CITY OF SANTA ROSA STANDARD PLANS, THE CONSTRUCTION SPECIFICATIONS FOR PUBLIC IMPROVEMENTS, THE SPECIAL PROVISIONS FOR THIS PROJECT AND THE STATE STANDARD SPECIFICATIONS AND STANDARD PLANS. THE CONTRACTOR IS RESPONSIBLE FOR UNDERSTANDING ALL STANDARDS PERTAINING TO THIS PROJECT.
- 2. THE CONTRACTOR SHALL CALL UNDERGROUND SERVICE ALERT (USA) AT 1-800-227-2600 NO LESS THAN 2 WORKING DAYS PRIOR TO ANY EXCAVATION FOR MARK OUTS OF EXISTING UNDERGROUND FACILITIES IN ACCORDANCE WITH SECTION 8-1.10 OF THE SPECIAL PROVISIONS.
- 3. THE LOCATIONS OF UNDERGROUND UTILITIES AND OTHER OBSTACLES SHOWN ON THE PLANS ARE BASED ON THE BEST AVAILABLE INFORMATION. THE CONTRACTOR SHALL POTHOLE AND DETERMINE THE EXACT LOCATION OF ALL POTENTIAL CONFLICTS IN ACCORDANCE WITH U.S.A. LAWS AND THESE SPECIAL PROVISIONS AND THE STANDARD SPECIFICATIONS. IF ANY UNMARKED UTILITIES ARE ENCOUNTERED, OR IF UNABLE TO LOCATE A MARKED UTILITY AFTER POT HOLING, THE CONTRACTOR SHALL IMMEDIATELY NOTIFY THE OWNER OF THAT UTILITY AND THE CITY ENGINEER.
- 4. ALL SEWER MANHOLES, MAINLINE CLEANOUTS AND WATER VALVES THAT ARE ON ACTIVE SYSTEMS SHALL BE ACCESSIBLE TO CITY PERSONNEL AT ALL TIMES AND SHALL BE BROUGHT TO GRADE WITHIN 48 HOURS OF PAVING.
- 5. OVERHEAD UTILITY SERVICE DROPS ARE NOT SHOWN ON THE PLANS. THE CONTRACTOR SHALL INVESTIGATE THE SITE AND BE AWARE OF LIMITED CLEARANCES UNDER OVERHEAD UTILITY LINES AND LOW HANGING TREE BRANCHES. THE CONTRACTOR'S TRUCKS AND EXCAVATION EQUIPMENT SHALL BE SIZED SO THAT OVERHEAD WIRES AND TREE BRANCHES ARE NOT DAMAGED.
- 6. THE CONTRACTOR SHALL PROTECT AND PRESERVE CITY MONUMENTS. THE CONTRACTOR SHALL COORDINATE WITH THE CITY ENGINEER 10 WORKING DAYS IN ADVANCE FOR REFERENCING OF EXISTING MONUMENTS TO BE DISTURBED. THE CONTRACTOR SHALL RECONSTRUCT DISTURBED MONUMENTS IN ACCORDANCE WITH CITY STANDARD 280.
- 7. ALL EXCAVATED MATERIAL SHALL BE DISPOSED OF AS GENERATED AND AT NO TIME SHALL THE CONTRACTOR PLACE EXCAVATED MATERIAL AT THE WORK SITE.
- 8. THE CONTRACTOR SHALL ONLY REMOVE EXISTING TREES OR SHRUBS AS NOTED ON THE PLANS OR AS DIRECTED BY THE ENGINEER.
- 9. ALL TRAFFIC STRIPES, RAISED PAVEMENT MARKERS AND PAVEMENT MARKINGS DAMAGED DUE TO THE CONTRACTOR'S OPERATIONS SHALL BE REPLACED PER CITY OF SANTA ROSA TRAFFIC STANDARDS PART III, TRAFFIC MARKINGS. PATCHING OF DAMAGED MARKINGS WILL NOT BE ALLOWED WITHOUT PRIOR APPROVAL FROM ENGINEERING. ALL DAMAGED RAISED PAVEMENT (NON-REFLECTIVE) MARKERS MUST BE REPLACED WITH CERAMIC. SEE SECTION 15-2.02D OF THE STANDARD SPECIFICATIONS.
- 10. SEWER LATERAL MATERIAL SHALL BE SDR PVC OR DUCTILE IRON PER CITY STANDARDS. ALL SEWER LATERALS WITH LESS THAN 2' OF COVER SHALL BE DUCTILE IRON PIPE.

SURVEY CONTROL DATA

NUMBER	NORTHING	EASTING	ELEVATION	DESCRIPTION
10	1923094.050	6358397.065	167.16	SET CUT X
11	1922803.764	6358496.747	167.58	FND BD 2"
12	1923075.366	6358201.071	168.01	FND PK NAIL
50	1924149.242	6359112.717	175.79	FND WELL MON G375
51	1923571.478	6358097.842	169.18	FND WELL MON G375
73	1923571.472	6358097.845	NA	G273
75	1924149.256	6359112.755	173.29	G375
499	1923001.544	6358359.640	167.29	SET CUT X

HORIZONTAL CONTROL:
HORIZONTAL COORDINATE CONTROL FOR THIS PROJECT IS BASED UPON THE CITY OF SANTA ROSA'S HORIZONTAL CONTROL NETWORK WHICH IS REFERENCED TO NAD 83 (2011) EPOCH 2010.00.

THE PROJECT HORIZONTAL CONTROL WAS ESTABLISHED USING STANDARD TERRESTRIAL SURVEY METHODS AND TIED TO THE CITY'S HORIZONTAL CONTROL NETWORK USING GPS RTK SURVEY METHODS USING CASR AS THE BASE. THE HORIZONTAL BASIS OF ROTATION IS BETWEEN CITY COORDINATE MONUMENTS G-273 AND G-375.

VERTICAL CONTROL:
VERTICAL CONTROL (ELEVATIONS) FOR THIS PROJECT ARE BASED UPON THE CITY OF SANTA ROSA'S VERTICAL CONTROL NETWORK WHICH IS REFERENCED TO NGVD OF 1929.

THE CENTERLINE WELL MONUMENT AT THE INTERSECTION OF E ST. AND 2ND ST. WAS USED AS THE BENCHMARK FOR THIS PROJECT AS DETERMINED FROM FIELD NOTES IN FIELDBOOK 161-16. ELEVATIONS IN FIELDBOOK 161-16 WERE ESTABLISHED FROM DIFFERENTIAL LEVELING BETWEEN CITY BENCHMARKS C-197 AND C-198.

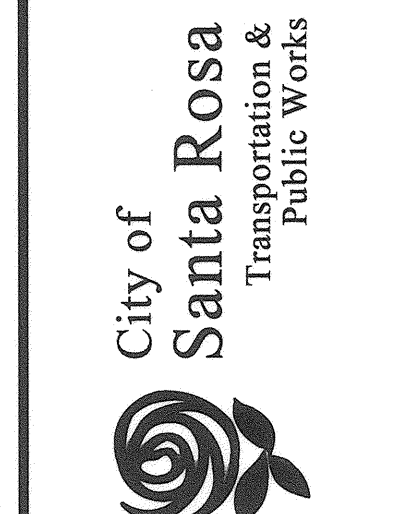
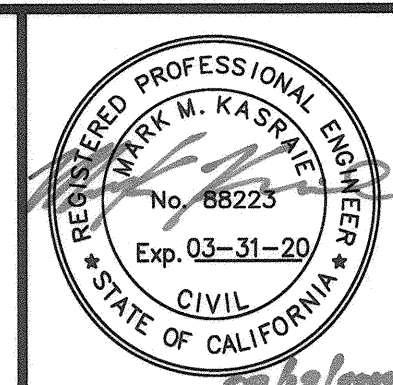
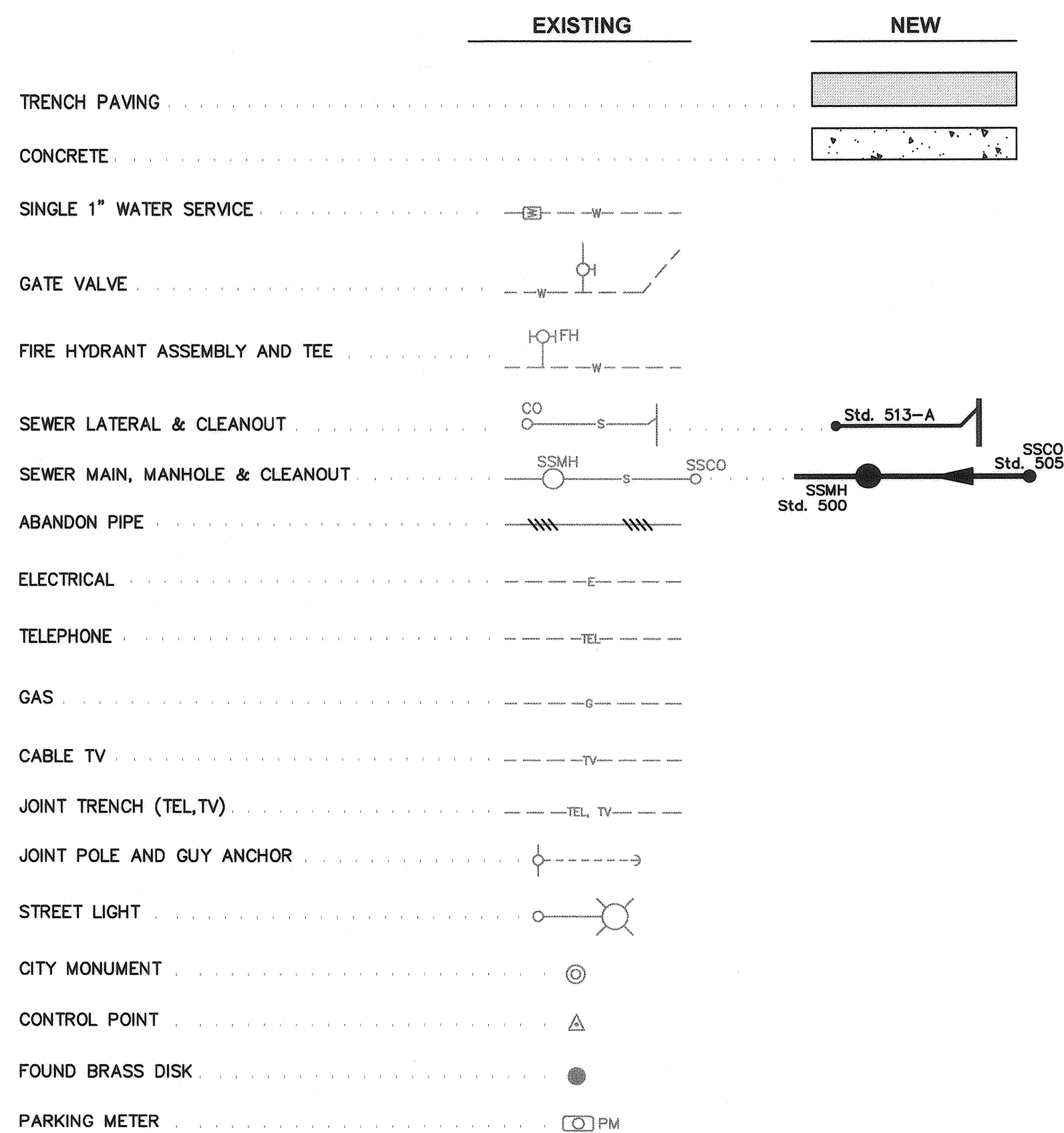
BENCH LEVEL DATA

C196 173.291	BROOKWOOD AVE. AT FOURTH ST.; CITY DISK IN WELL MONUMENT, E'LY OF TWO CL INTERSECTION MONUMENTS, 10 FT APART. (COORDINATE MONUMENT G375). 8/85
C197 172.462	BROOKWOOD AVE. AT THIRD ST.; CITY DISK IN WELL MONUMENT AT CL INTERSECTION, N'LY OF TWO MONUMENTS 7 FT APART. 8/85
C198 171.286	BROOKWOOD AVE. AT SECOND ST.; CITY DISK IN WELL MONUMENT AT CL INTERSECTION. (COORDINATE MONUMENT G376). 8/85

ABBREVIATIONS

ABAN	ABANDONED
AC	ASPHALT CONCRETE
ACP	ASBESTOS CONCRETE PIPE
AGG	AGGREGATE
BC	BEGINNING OF CURVE, BACK OF CURB
BFP	BACK FLOW PREVENTER
BSW	BACK OF SIDEWALK
CB	CATCH BASIN
COF	CONTROL DENSITY FILL
C	CENTERLINE
C&G	CURB & GUTTER
CIP	CAST IRON PIPE
CO, C/O	CLEANOUT
CONC	CONCRETE
C.T.B.	CEMENT TREATED BASE
DBL	DOUBLE
DEPT	DEPARTMENT
DI	DROP INLET
DIA	DIAMETER
DIP	DUCTILE IRON PIPE
DWY	DRIVEWAY
DY	DOUBLE YELLOW
E, ELEC	ELECTRICAL
(E)	EAST
EC	END OF CURVE
EG	EXISTING GRADE
EP	EDGE OF PAVEMENT
EX	EXISTING
FC	FACE OF CURB
FG	FINISH GRADE
FH	FIRE HYDRANT
FL	FLOWLINE
FRP	FIBERGLASS REINFORCED PLASTIC
G	GAS
IC	INTERCONNECT
IG	INVERT GRADE
JT	JOINT TRENCH
KV	KILOVOLT
LAT	LATERAL
LG	LIP OF GUTTER
LT	LEFT OFFSET FROM CENTERLINE
MAX	MAXIMUM
MH	MANHOLE
MIN	MINIMUM
MJ	MECHANICAL JOINT
MON	MONUMENT
(N)	NORTH
No	NUMBER
NTS	NOT TO SCALE
PED	PEDESTRIAN
PI	POINT OF INTERSECTION
PM	PARKING METER
PRA	PRESSURE REDUCING ASSEMBLY
PT.	POINT
P.U.E.	PUBLIC UTILITY EASEMENT
PVC	POLYVINYL CHLORIDE
R	RADIUS
RC	RELATIVE COMPACTION
RCP	REINFORCED CONCRETE PIPE
RFP	REINFORCED FIBER PIPE
RPM	RAISED PAVEMENT MARKER
RT	RIGHT OFFSET FROM CENTERLINE
R/W	RIGHT OF WAY
S	SEWER
(S)	SOUTH
SCH	SCHEDULE
SCWA	SONOMA COUNTY WATER AGENCY
SD	STORM DRAIN
SDMH	STORM DRAIN MANHOLE
SHT	SHEET
SL	STREET LIGHT
SS	SANITARY SEWER
SSCO	SANITARY SEWER CLEANOUT
SSMH	SANITARY SEWER MANHOLE
STD	STANDARD
STL	STEEL
SVC	SERVICE
SW	SINGLE WHITE
S/W	SIDEWALK
TC	TOP OF CURB
TEL	TELEPHONE
THMO	THERMOPLASTIC
TYP	TYPICAL
TS	TRAFFIC SIGNAL
TV	CABLE
UT	UTILITY TRENCH
VCP	VITRIFIED CLAY PIPE
VL	VAULT
W, WTR	WATER
(W)	WEST
WM	WATER MAIN
WS	WATER SERVICE

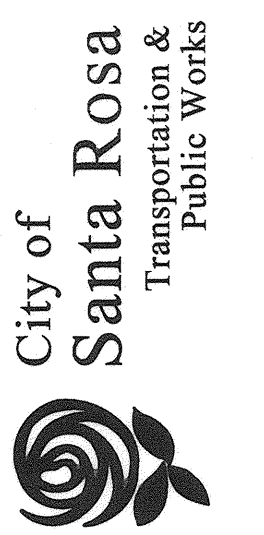
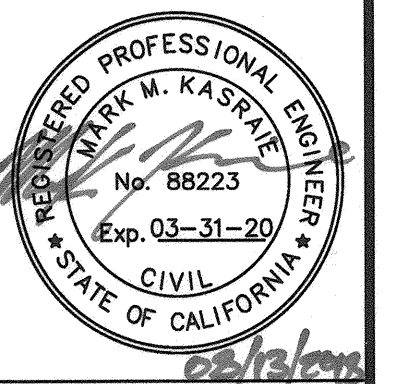
LEGEND



NO.	DATE	REVISION	BY

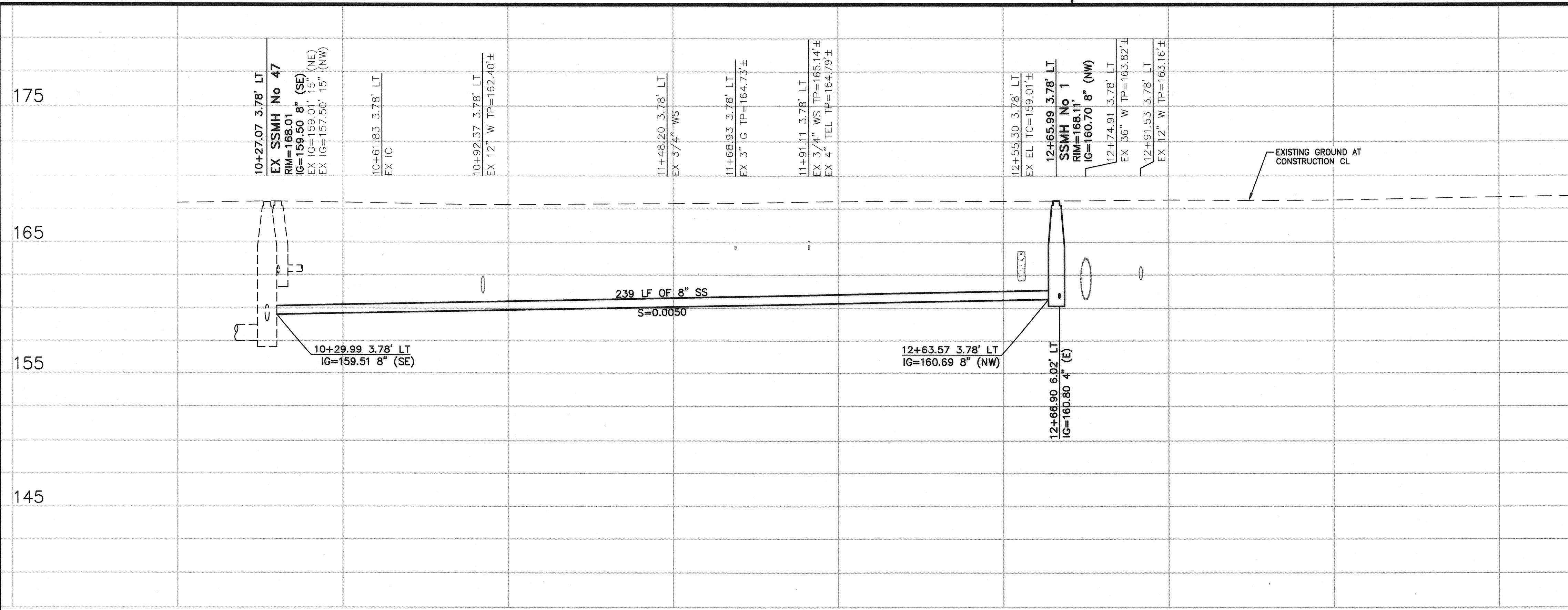
SCALE: NONE DATE: AUGUST 2018
DWN BY: RS/MMK CHK BY: MMK
APPROVED: Deputy Director - Engineering
By: *Dee Ushah* Date: 8/14/18

E ST SEWER REPLACEMENT
2ND ST TO SANTA ROSA CREEK
NOTES AND ABBREVIATIONS

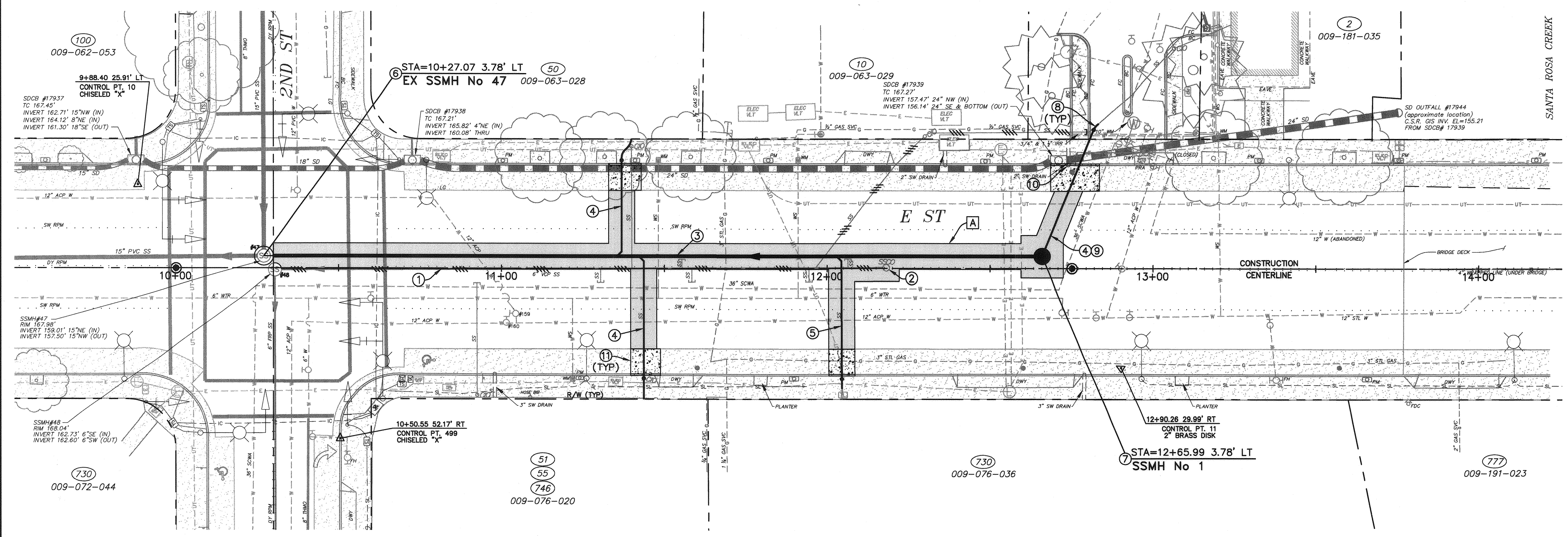


NO.	DATE	REVISION	BY

NOTE:
THE LOCATIONS OF EXISTING UTILITIES SHOWN ON THE PLANS ARE APPROXIMATE ONLY. THE CONTRACTOR SHALL POT-HOLE AND DETERMINE THE EXACT HORIZONTAL AND VERTICAL LOCATION OF ALL EXISTING UTILITIES FIVE WORKING DAYS PRIOR TO THE START OF TRENCHING AND SHALL ADJUST THE DEPTH OF THE NEW UTILITIES TO CLEAR ANY CONFLICTS AS DIRECTED BY THE ENGINEER.



PROFILE
SCALE: HORIZONTAL: 1"=20'
VERTICAL: 1"=5'



PLAN
SCALE: 1"=20'

CONSTRUCTION NOTES

- 1 ABANDON EXISTING SANITARY SEWER PER CITY STD 507.
- 2 REMOVE EXISTING SEWER MAINLINE CLEANOUT, INCLUDING RISER PIPE AND SWEEP. BACKFILL AND TRENCH PAVE PER CITY STD 215.
- 3 INSTALL 8" SDR 26 PVC SANITARY SEWER MAIN.
- 4 INSTALL 4" SDR 26 PVC SANITARY SEWER LATERAL PER CITY STD 513A. REMOVE OR ABANDON EXISTING LATERAL PER CITY STD 507.
- 5 DURING EXCAVATION FOR NEW SEWER MAIN PROVIDE ACCESS FOR CITY CREW TO TELEWISE POTENTIAL LIVE EXISTING SEWER LATERAL AFTER IT IS EXPOSED IN TRENCH. IF LATERAL IS DETERMINED TO BE LIVE INSTALL NEW 4" SDR 26 SANITARY SEWER LATERAL PER CITY STD 513A.
- 6 CONNECT NEW 8" SEWER MAIN TO EXISTING 60" SEWER (DOWNTOWN SEWER TRUNK MAIN) MANHOLE. FORM NEW FLOW CHANNEL, GROUT PIPE PENETRATION AND SEAL ENTIRE MANHOLE.
- 7 INSTALL 48" SANITARY SEWER MANHOLE PER CITY STD 500.
- 8 USE LONG RADIUS SWEEPS TO MAKE ALIGNMENT TRANSITION FOR CONNECTION TO EXISTING SEWER LATERAL.
- 9 INSTALL TRACER WIRE ON LATERALS NOT PERPENDICULAR TO SANITARY SEWER MAIN.
- 10 RECONSTRUCT SIDEWALK DRAIN PER SECTION 15 OF THE SPECIFICATIONS.
- 11 REMOVE AND REPLACE CURB AND GUTTER PER SECTION 73 OF THE SPECIFICATIONS.

PAVING NOTES

- A BACKFILL AND TRENCH PAVE PER CITY STD 215.

GENERAL NOTES

1. REPLACE TRAFFIC MARKINGS AND STRIPING DAMAGED BY CONSTRUCTION. CROSSWALK LINES SHALL BE RE-STRIPPED THEIR LENGTH IN FULL.
2. ALL NEW SANITARY SEWER MAINS AND LATERALS CROSSING EXISTING WATER MAINS SHALL CONFORM TO CITY STD BLANKET WAIVER 3.

SCALE: H: 1"=20' V: 1"=5'	DATE: AUGUST 2018	CHK BY: MMK
DWN BY: RSI/MMK	APPROVED: Deputy Director - Engineering	Date: 8/14/18
By: <i>[Signature]</i>		

EST SEWER REPLACEMENT 2ND ST TO SANTA ROSA CREEK	CONTRACT NO. C01996
	SHEET 3 OF 3
	FILE NO. 2018-0036