



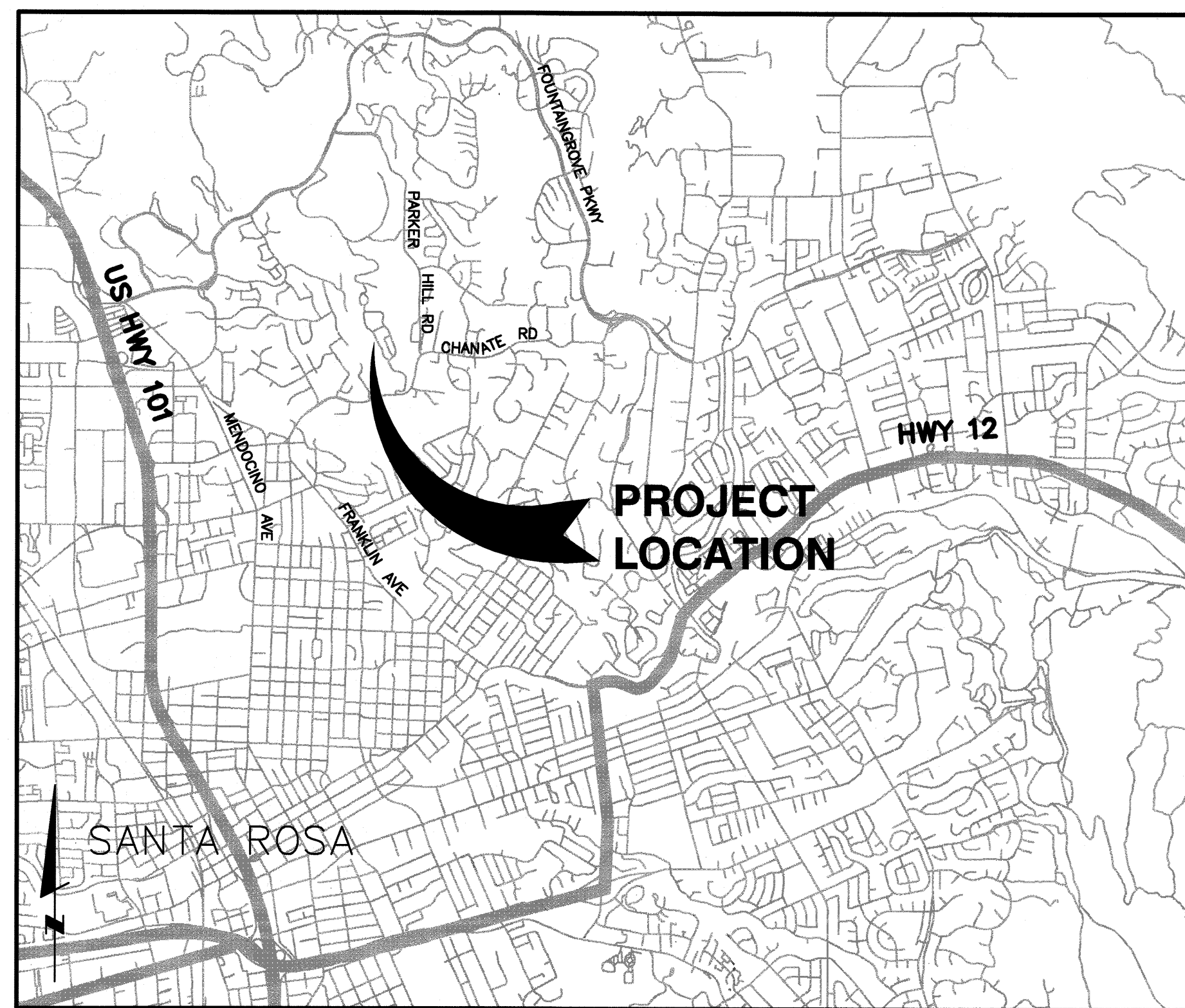
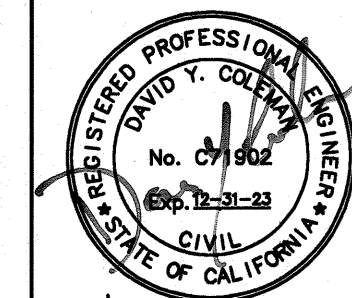
# CITY OF SANTA ROSA

IMPROVEMENT PLANS FOR

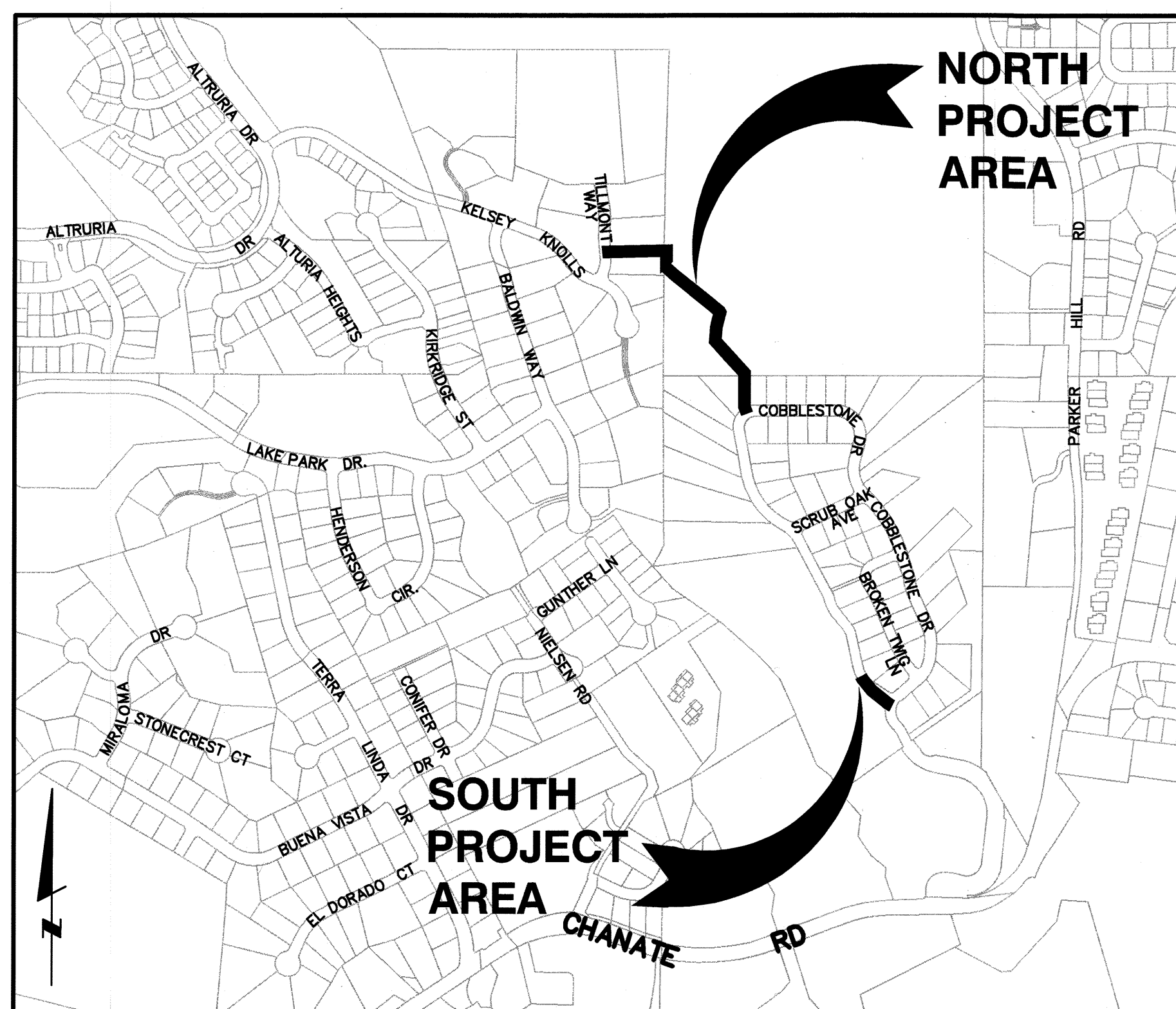
# COBBLESTONE DRIVE ZONE R2-R4 WATER MAIN CONNECTION

CONTRACT NO. C01999

**Brelje & Race**  
CONSULTING ENGINEERS  
475 Aviation Blvd. • Suite 120 • Santa Rosa, CA 95403 • 707-576-1322  
www.brce.com



**VICINITY MAP**  
NOT TO SCALE



**LOCATION MAP**  
NOT TO SCALE

### INDEX OF SHEETS

| SHEET NO. | DESCRIPTION                                  |
|-----------|--|
| 1         | COVER  |
| 2         | ABBREVIATIONS, LEGEND & NOTES                |
| 3         | SHEET LAYOUT & SURVEY CONTROL                |
| 4         | UTILITY PLAN & PROFILE N. STA.1+00-STA.5+00  |
| 5         | UTILITY PLAN & PROFILE N. STA.5+00-STA.9+00  |
| 6         | UTILITY PLAN & PROFILE N. STA.9+00-STA.11+80 |
| 7         | UTILITY PLAN & PROFILE S. STA.1+00-STA.3+00  |
| 8         | DETAILS                                      |

| RECORD PLAN DATA                   |                             |
|------------------------------------|-----------------------------|
| PROJECT START: _____               | WATER SERVICE TYPE: _____   |
| PROJECT END: _____                 | MANUFACTURER: _____         |
| GEN. CONTRACTOR: _____             | FIRE HYDRANT TYPE: _____    |
| SUPERINTENDENT: _____              | MANUFACTURER: _____         |
| UNDERGROUND CONTRACTOR: _____      | INSPECTOR: _____            |
| FOREMAN: _____                     | CONSTRUCTION MANAGER: _____ |
| SEWER PIPE TYPE: _____             | RECORD PLANS BY: _____      |
| MANUFACTURER: _____                | ADDITIONAL INFO: _____      |
| SEWER FITTINGS MANUFACTURER: _____ | _____                       |
| M.H. MANUFACTURER: _____           | _____                       |
| WATER PIPE TYPE: _____             | _____                       |
| MANUFACTURER: _____                | _____                       |
| WATER VALVE MANUFACTURER: _____    | _____                       |
| WATER FITTINGS MANUFACTURER: _____ | _____                       |

BEFORE EXCAVATING  
CALL U.S.A. (UNDERGROUND  
SERVICE ALERT) NORTH  
811  
TWO WORKING DAYS BEFORE ALL  
PLANNED WORK OPERATIONS

|   |         |                |         |             |                |               |      |    |          |  |      |     |      |     |      |     |      |     |      |     |      |
|---|---------|----------------|---------|-------------|----------------|---------------|------|----|----------|--|------|-----|------|-----|------|-----|------|-----|------|-----|------|
| 10/1/22   | 10/1/22 | 10/1/22        | 10/1/22 | 10/1/22     | 10/1/22        |               |      |    |          |  |      |     |      |     |      |     |      |     |      |     |      |
| Design/Const  | Survey  | Utilities Op's | Traffic | Storm Water | IPW Field Svcs | Materials Lab | DEPT | BY | REVISION | NO.  | DATE | NO. | DATE | NO. | DATE | NO. | DATE | NO. | DATE | NO. | DATE |
|   |         |                |         |             |                |               |      |    |          |  |      |     |      |     |      |     |      |     |      |     |      |
| <p>DATE: SEPTEMBER 2022<br/>CHK BY: DYC BLB<br/>APPROVED: Assistant City Manager<br/>By: Jason Nutt</p> |         |                |         |             |                |               |      |    |          | <p>SCALE: AS SHOWN<br/>DWN BY: DS<br/>DATE: SEPTEMBER 2022<br/>CHK BY: DYC BLB<br/>APPROVED: Assistant City Manager<br/>By: Jason Nutt</p> |      |     |      |     |      |     |      |     |      |     |      |
| <p>CITY OF SANTA ROSA<br/>COBBLESTONE DRIVE ZONE R2-R4<br/>WATER MAIN CONNECTION</p>                    |         |                |         |             |                |               |      |    |          | <p>COVER</p>   |      |     |      |     |      |     |      |     |      |     |      |
| <p>CONTRACT NO.<br/>C01999</p>  |         |                |         |             |                |               |      |    |          | <p>SHEET 1 OF 8</p>  |      |     |      |     |      |     |      |     |      |     |      |
| <p>FILE NO. 2018-0040</p>   |         |                |         |             |                |               |      |    |          | <p>FILE NO. 2018-0040</p>  |      |     |      |     |      |     |      |     |      |     |      |



# ABBREVIATIONS

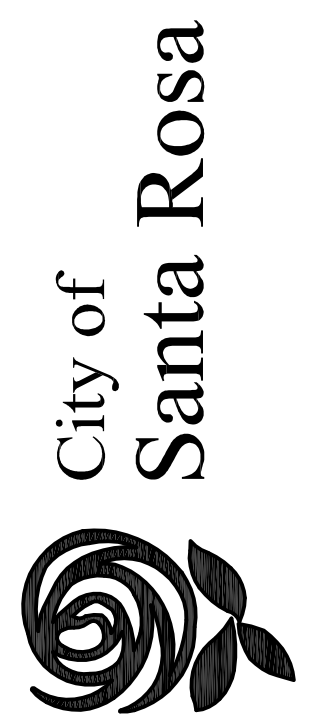
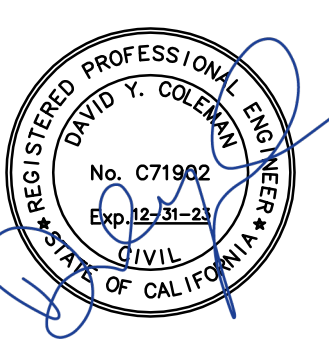
|        |  |        |  |
|--------|--|--------|--|
| AB     | AGGREGATE BASE                         | MBGR   | METAL BEAM GUARD RAIL                  |
| AC     | ASPHALT CONCRETE                       | MFR    | MANUFACTURE                            |
| ACP    | ASBESTOS CEMENT PIPE                   | MG     | MILLION GALLONS                        |
| AD     | ALGEBRAIC DIFFERENCE                   | MH     | MANHOLE                                |
| ADA    | AMERICANS WITH DISABILITIES ACT        | MIN    | MINIMUM                                |
| ADPT   | ADAPTER                                | MIP    | MALE IRON PIPE                         |
| AGG    | AGGREGATE                              | MISC   | MISCELLANEOUS                          |
| ALUM   | ALUMINUM                               | MJ     | MECHANICAL JOINT                       |
| AP     | ANGLE POINT                            | MON    | MONUMENT                               |
| APN    | ASSESSORS PARCEL NUMBER                | MSL    | MEAN SEA LEVEL                         |
| APPROX | APPROXIMATE                            | N      | NORTH                                  |
| ARV    | AIR RELEASE VALVE                      | NA     | NOT APPLICABLE                         |
| AVE    | AVENUE                                 | N.C.   | NORMALLY CLOSED                        |
| BC     | BEGIN HORIZONTAL CURVE                 | NI     | NOT IN CONTRACT                        |
| BLDG   | BUILDING                               | NO     | NUMBER                                 |
| BLVD   | BOULEVARD                              | NPT    | NATIONAL PIPE THREAD                   |
| BM     | BENCHMARK                              | OC     | ON CENTER                              |
| BO     | BLOWOFF                                | OD     | OUTSIDE DIAMETER                       |
| BSL    | BUILDING SETBACK LINE                  | OH     | OVERHEAD                               |
| BV     | BUTTERFLY VALVE                        | OZ     | OUNCE                                  |
| BVC    | BEGIN VERTICAL CURVE                   | PA     | PLANTER AREA                           |
| BW     | BOTTOM OF WALL                         | PC     | POINT OF CURVATURE                     |
| B&R    | BRELJE & RACE                          | PCC    | POINT OF COMPOUND CURVATURE            |
| CAV    | COMBINATION AIR & VACUUM RELEASE VALVE | PCC    | PORTLAND CEMENT CONCRETE               |
| CB     | CATCH BASIN                            | PCD    | PLANTER DRAIN                          |
| CBC    | CALIFORNIA BUILDING CODE               | PE     | PLAIN END                              |
| CD     | CONTROLLED DENSITY FILL                | PG     | PAD GRADE                              |
| CHK    | CHECK                                  | PV     | POST INDICATOR VALVE                   |
| CHPP   | CAST-IN-PLACE PIPE                     | PN     | PROVING NOTCH                          |
| CL     | CENTERLINE                             | POC    | POINT OF CONNECTION                    |
| CL     | CENTERLINE                             | POC    | POINT ON CURVE                         |
| CLR    | CLASS                                  | POS    | PRIVATE OPEN SPACE                     |
| CMP    | CORRUGATED METAL PIPE                  | POT    | POINT ON TANGENT                       |
| CMPA   | CORRUGATED METAL PIPE ARCH             | PP     | POWER POLE                             |
| CO     | CLEANOUT                               | PRC    | POINT OF REVERSE CURVATURE             |
| COAX   | COAXIAL CABLE                          | PRV    | PRESSURE REDUCING VALVE                |
| CONC   | CONCRETE                               | PSI    | POUND PER SQUARE INCH                  |
| COND   | CONDUIT                                | PSV    | PRESSURE SUSTAINING VALVE              |
| COTG   | CLEANOUT TO GRADE                      | PT     | POINT OF TANGENCY                      |
| CP     | CONTROL POINT                          | PUE    | PUBLIC UTILITY EASEMENT                |
| CPUG   | CURB POINT                             | PVC    | POLYVINYL CHLORIDE                     |
| CR     | CURB RETURN                            | PVI    | POINT OF VERTICAL INTERSECTION         |
| CSP    | CORRUGATED STEEL PIPE                  | PVMT   | PAVEMENT                               |
| CTR    | CENTER                                 | PWE    | PUBLIC WATER EASEMENT                  |
| CY     | CUBIC YARDS                            | R      | RADIUS                                 |
| C/C    | CENTER TO CENTER                       | RC     | RELATIVE COMPACTION                    |
| C&G    | CURB AND GUTTER                        | RCB    | REINFORCED CONCRETE BOX                |
| DBL    | DOUBLE                                 | ROP    | REINFORCED CONCRETE PIPE               |
| DDC    | DOUBLE CHECK DETECTOR CHECK            | RD     | ROAD                                   |
| DDC    | DOUBLE DETECTOR CHECK                  | RD     | ROOF DRAIN                             |
| DET    | DETECTOR                               | RED    | REDUCER                                |
| DI     | DROP INLET                             | REF    | REFERENCE                              |
| DIA    | DIAMETER                               | RPBP   | REDUCED PRESSURE BACKFLOW PREVENTER    |
| DIP    | DUCTILE IRON PIPE                      | RSC    | REMOTE SUPERVISORY CONTROL             |
| DR     | DRIVE                                  | RT     | RIGHT                                  |
| DS     | DOWNSTREAM                             | RT     | RING TIGHT                             |
| DWG    | DRAWING                                | RW     | RECLAIMED WATER                        |
| D/W    | DRIVEWAY                               | R/W    | RIGHT OF WAY                           |
| E      | EAST                                   | S      | SOUTH                                  |
| EC     | END HORIZONTAL CURVE                   | S      | SLOPE                                  |
| ECC    | ECCENTRIC                              | S.A.D. | SEE ARCHITECTURAL DRAWINGS             |
| EFFL   | EFFLUENT (SEWER)                       | SCADA  | SUPERVISORY CONTROL & DATA ACQUISITION |
| EG     | EXISTING GROUND                        | SCH    | SCHEDULE                               |
| EL     | ELEVATION                              | SD     | STORM DRAIN                            |
| ELEC   | ELECTRICAL                             | SDCB   | STORM DRAIN CATCH BASIN                |
| ELL    | ELBOW                                  | SDCO   | STORM DRAIN CLEANOUT                   |
| EP     | EDGE OF PAVEMENT                       | SDDI   | STORM DRAIN DROP INLET                 |
| ESMT   | EASEMENT                               | SDE    | STORM DRAIN EASEMENT                   |
| EVC    | END VERTICAL CURVE                     | SDMH   | STORM DRAIN MANHOLE                    |
| EW     | EACH WAY                               | SE     | SEWER EASEMENT                         |
| EX     | EXISTING                               | SF     | SQUARE FEET                            |
| EXIST  | EXISTING                               | SOF    | SLIP ON FLANGE                         |
| FC     | FACE OF CURB                           | SO     | SIDE OPENING (SD)                      |
| FCA    | FLANGED COUPLING ADAPTER               | SPEC   | SPECIFICATION                          |
| FDC    | FIRE DEPARTMENT CONNECTION             | SS     | STAINLESS STEEL                        |
| FES    | FLARED END SECTION                     | SS     | SANITARY SEWER                         |
| FF     | FINISHED FLOOR                         | SSCO   | SANITARY SEWER CLEANOUT                |
| FG     | FINISHED GRADE                         | SSMH   | SANITARY SEWER MANHOLE                 |
| FH     | FIRE HYDRANT                           | ST     | STREET                                 |
| FIP    | FEMALE IRON PIPE                       | STA    | STANDARD                               |
| F      | FLOWLINE                               | STD    | STEEL                                  |
| FL     | FLOWLINE                               | SVC    | SERVICE                                |
| FLG    | FLANGE                                 | SWE    | SIDEWALK EASEMENT                      |
| FLO    | FLOWLINE OF SIDE OPENING               | SY     | SQUARE YARDS                           |
| FLEX   | FLEXIBLE                               | S/Y    | SIDEWALK                               |
| FM     | FORCE MAIN (PRESSURE)                  | T      | TANGENT                                |
| FRP    | FIBERGLASS REINFORCED PLASTIC          | TAN    | TANGENT                                |
| FTC    | FOOTING                                | TB     | TOP OF BOX                             |
| GALV   | GALVANIZED                             | TC     | TOP OF CURB                            |
| GB     | GRADE BREAK                            | TCE    | TEMPORARY CONSTRUCTION EASEMENT        |
| GPM    | GALLONS PER MINUTE                     | TD     | TOP OF DIKE                            |
| GRD    | GROUND                                 | TEL    | TELEPHONE                              |
| GSP    | GALVANIZED STEEL PIPE                  | TEMP   | TEMPORARY                              |
| GV     | GAS VALVE                              | TF     | TOP OF FOUNDATION                      |
| GV     | GATE VALVE                             | TG     | TOP OF GRATE                           |
| HB     | HOSE BIBB                              | THD    | THREADED                               |
| HB     | HEADER BOARD                           | TW     | TOP OF WALL                            |
| HDC    | HOT DIPPED GALVANIZED                  | TYP    | TYPICAL                                |
| HDPE   | HIGH DENSITY POLYETHYLENE              | UFFG   | UNDER FLOOR FINISHED GRADE             |
| HP     | HIGH POINT                             | UNO    | UNLESS NOTED OTHERWISE                 |
| HPC    | HIGH PRESSURE GAS                      | VC     | VERTICAL CURVE                         |
| HWY    | HIGHWAY                                | W      | WEST                                   |
| ICV    | IRRIGATION CONTROL VALVE               | W      | WATER                                  |
| ID     | INSIDE DIAMETER                        | WM     | WATER METER                            |
| INV    | INVERT                                 | WNF    | WELD NECK FLANGE                       |
| IP     | IRON PIPE                              | WS     | WATER SERVICE                          |
| IPS    | IRON PIPE SIZE                         | WT     | WEIGHT                                 |
| IRR    | IRRIGATION                             | WV     | WATER VALVE                            |
| ISA    | INTERNATIONAL SIGN ASSOCIATION         |        |  |
| JP     | JOINT POLE                             |        |  |
| JT     | JOINT TRENCH                           |        |  |
| L      | LENGTH                                 |        |  |
| LF     | LINEAL FEET                            |        |  |
| LG     | LIP OF GARAGE                          |        |  |
| LP     | LOW POINT                              |        |  |
| LT     | LEFT                                   |        |  |
| LT     | LEFT                                   |        |  |
| MAX    | MAXIMUM                                |        |  |

# LEGEND

| LINES  |       |
|--|-------|
| EXISTING BOUNDARY                                  | ----- |
| EXISTING PARCEL CENTER                             | ----- |
| EASEMENT   | ----- |
| UTILITY & TOPOGRAPHY                               |       |
| DROP INLET   |       |
| DROP INLET WITH SIDE OPENINGS                      |       |
| STORM DRAIN, MANHOLE & CATCH BASIN                 |       |
| SEWER MAIN, MANHOLE & CLEAN OUT                    |       |
| SEWER LATERAL & CLEANOUT                           |       |
| IRRIGATION CONTROL VALVE BOX & SERVICE             |       |
| FIRE HYDRANT & SERVICE ASSEMBLY                    |       |
| WATER MAIN, GATE VALVE, CROSS & ELBOW              |       |
| WATER MAIN, BLOWOFF, TEE, GATE VALVE, CROSS & BEND |       |
| SINGLE WATER SERVICE (SEE PLANS FOR SIZE)          |       |
| DUAL WATER SERVICE (SEE PLANS FOR SIZE)            |       |
| TEMPORARY BLOWOFF, REDUCER & TIE-IN                |       |
| END CAP OR PLUG                                    |       |
| GAS MAIN, VALVE & SERVICE                          |       |
| ELECTRICAL MANHOLE                                 |       |
| TELEPHONE MANHOLE                                  |       |
| PACIFIC BELL TELEPHONE PULL BOX/VAULT              |       |
| ELECTRICAL CONDUIT & BOX                           |       |
| STREET LIGHT CONDUIT & BOX                         |       |
| STREET LIGHT                                       |       |
| TRAFFIC SIGNAL                                     |       |
| TRAFFIC SIGNAL PULL BOX                            |       |
| JOINT POLE & GUY ANCHOR                            |       |
| OVERHEAD UTILITY                                   |       |
| STREET ADDRESS                                     |       |
| STREET SIGN  |       |
| FENCE  |       |
| PARKING METER                                      |       |
| SURVEY CONTROL POINT                               |       |
| SURVEY MONUMENT                                    |       |
| AC DIKE  |       |
| CURB & GUTTER                                      |       |
| TREE PROTECTION                                    |       |
| PERMANENT FIBER ROLL                               |       |
| ABANDON EXISTING UTILITY                           |       |
| REMOVE EXISTING UTILITY                            |       |
| TREE TO BE SAVED                                   |       |
| TREE TO BE REMOVED                                 |       |

# GENERAL NOTES

- ALL WORKMANSHIP, MATERIALS AND CONSTRUCTION SHALL CONFORM TO THE CITY OF SANTA ROSA STANDARD PLANS, THE CONSTRUCTION SPECIFICATIONS FOR PUBLIC IMPROVEMENTS, THE SPECIAL PROVISIONS FOR THIS PROJECT AND THE STATE STANDARD SPECIFICATIONS AND STANDARD PLANS. THE CONTRACTOR IS RESPONSIBLE FOR UNDERSTANDING ALL STANDARDS PERTAINING TO THIS PROJECT.
- THE CONTRACTOR SHALL CALL UNDERGROUND SERVICE ALERT (USA) NORTH AT 811 NO LESS THAN 2 WORKING DAYS PRIOR TO ANY EXCAVATION FOR MARK OUTS OF EXISTING UNDERGROUND FACILITIES IN ACCORDANCE WITH SECTION 8-1.10 OF THE SPECIAL PROVISIONS.
- THE LOCATIONS OF UNDERGROUND UTILITIES AND OTHER OBSTACLES SHOWN ON THE PLANS ARE BASED ON THE BEST AVAILABLE INFORMATION. THE CONTRACTOR SHALL POT-HOLE AND DETERMINE THE EXACT LOCATION OF ALL POTENTIAL CONFLICTS IN ACCORDANCE WITH U.S.A. LAWS AND THESE SPECIAL PROVISIONS AND THE STANDARD SPECIFICATIONS. IF ANY UNMARKED UTILITIES ARE ENCOUNTERED, OR IF UNABLE TO LOCATE A MARKED UTILITY AFTER POT-HOLING, THE CONTRACTOR SHALL IMMEDIATELY NOTIFY THE OWNER OF THAT UTILITY AND THE CITY ENGINEER.
- THE CONTRACTOR SHALL PROTECT AND PRESERVE CITY MONUMENTS. THE CONTRACTOR SHALL COORDINATE WITH THE CITY ENGINEER 10 WORKING DAYS IN ADVANCE FOR REFERENCING OF EXISTING MONUMENTS TO BE DISTURBED. THE CONTRACTOR SHALL RECONSTRUCT DISTURBED MONUMENTS IN ACCORDANCE WITH CITY STANDARD 280.
- OVERHEAD UTILITY SERVICE DROPS ARE NOT SHOWN ON THE PLANS. THE CONTRACTOR SHALL INVESTIGATE THE SITE AND BE AWARE OF LIMITED CLEARANCES UNDER OVERHEAD UTILITY LINES AND LOW HANGING TREE BRANCHES. THE CONTRACTOR'S TRUCKS AND EXCAVATION EQUIPMENT SHALL BE SIZED SO THAT OVERHEAD WIRES AND TREE BRANCHES ARE NOT DAMAGED.
- ALL EXCAVATED MATERIAL SHALL BE DISPOSED OF AS GENERATED AND AT NO TIME SHALL THE CONTRACTOR PLACE EXCAVATED MATERIAL AT THE WORK SITE.
- THE CONTRACTOR SHALL ONLY REMOVE EXISTING TREES OR SHRUBS AS NOTED ON THE PLANS OR AS DIRECTED BY THE ENGINEER.
- FOR CLARITY OF EXISTING SUBSURFACE CONDITIONS, NOT ALL CROSSWALKS, STOP BARS, OR EXISTING PAVEMENT MARKINGS ARE SHOWN ON THE PLANS. TRAFFIC STRIPES, RAISED PAVEMENT MARKERS AND PAVEMENT MARKINGS DAMAGED DUE TO THE CONTRACTOR'S OPERATIONS SHALL BE REPLACED PER CITY OF SANTA ROSA TRAFFIC STANDARDS PART III, TRAFFIC MARKINGS. PATCHING OF DAMAGED MARKINGS WILL NOT BE ALLOWED WITHOUT PRIOR APPROVAL FROM ENGINEERING. ALL DAMAGED RAISED PAVEMENT (NON-REFLECTIVE) MARKERS MUST BE CERAMIC.
- IN THE EVENT CULTURAL RESOURCES (SUCH AS HISTORICAL, ARCHEOLOGICAL, AND PALEONTOLOGICAL RESOURCES, OR HUMAN REMAINS) ARE DISCOVERED DURING CONSTRUCTION ACTIVITIES, WORK SHALL IMMEDIATELY BE HALTED WITHIN THE VICINITY OF THE FIND. THE NORTHWEST INFORMATION CENTER SHALL BE NOTIFIED AT (707) 588-8455. A QUALIFIED ARCHEOLOGIST SHALL BE CONSULTED FOR AN ON-SITE EVALUATION. ADDITIONAL MITIGATION MAY BE REQUIRED BY THE CITY PER THE ARCHEOLOGISTS RECOMMENDATIONS. IF HUMAN BURIALS OR HUMAN REMAINS ARE ENCOUNTERED, THE CONTRACTOR SHALL ALSO NOTIFY THE COUNTY CORONER AT (707) 565-5070.
- PREVIOUS ROADWAY AND UNDERGROUND WORK IN THE VICINITY OF THIS PROJECT HAVE ENCOUNTERED SUBSTANTIAL AMOUNTS OF ROCK. HEAVY-DUTY EXCAVATING EQUIPMENT WILL BE REQUIRED TO EXCAVATE IN HARD ROCK ZONES. SEE SECTION 132-11119 OF THE TECHNICAL SPECIFICATIONS AND THE "GEOTECHNICAL STUDY REPORT COBBLESTONE DRIVE WATER LINE", DATED OCTOBER 8, 2018 PREPARED BY RGH CONSULTANTS, INC. FOR ADDITIONAL INFORMATION REGARDING ANTICIPATED EXCAVATION CHARACTERISTICS.



| NO. | REVISION | DATE |
|-----|----------|------|
|     |          |      |
|     |          |      |
|     |          |      |

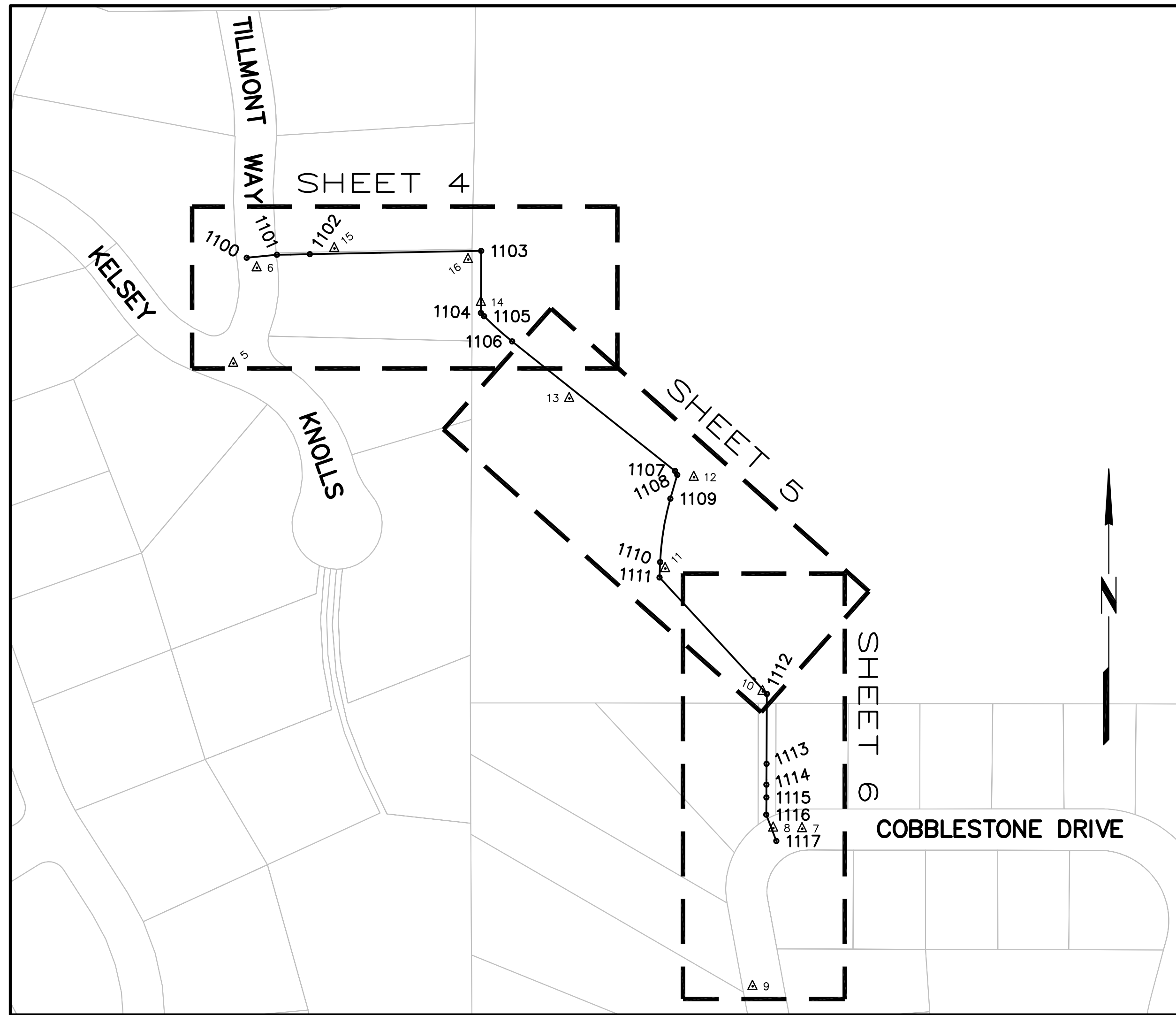
**Brelje & Race**  
CONSULTING ENGINEERS  
475 Aviation Blvd., Suite 1204 Santa Rosa, CA 95403-707-576-1322  
www.brelje.com

DATE: SEPTEMBER 2022  
CHK BY: DYC/BLB  
SCALE: AS SHOWN  
DWN BY: PIT

City of Santa Rosa  
**COBBLESTONE DRIVE ZONE**  
**R2-R4 WATER MAIN CONNECTION**

**ABBREVIATIONS, LEGEND & NOTES**





**NORTH PROJECT AREA**  
**PLAN & PROFILE SHEET LAYOUT AND SURVEY CONTROL DATA**  
 NOT TO SCALE

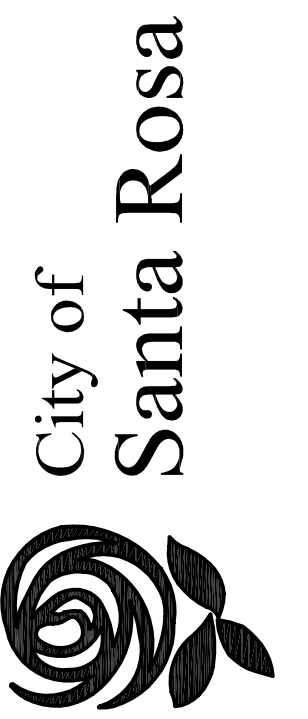
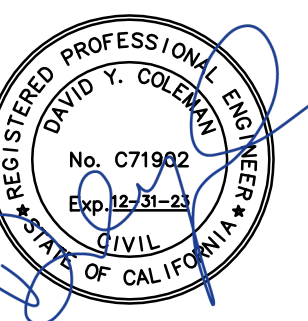


**SOUTH PROJECT AREA**  
**PLAN & PROFILE SHEET LAYOUT AND SURVEY CONTROL DATA**  
 NOT TO SCALE

| CONTROL POINT COORDINATE TABLE |             |             |                     |           |
|--------------------------------|-------------|-------------|---------------------|-----------|
| NO.                            | NORTHING    | EASTING     | TYPE                | ELEVATION |
| 5                              | 1935831.879 | 6358335.887 | 518_ FND 3" B.D.    | 475.16    |
| 6                              | 1935937.989 | 6358361.916 | 518_ FND 3" B.D.    | 485.70    |
| 7                              | 1935315.450 | 6358967.391 | 518_ FND 3" B.D.    | 458.64    |
| 8                              | 1935316.125 | 6358935.313 | 5200 SET NAIL       | 458.17    |
| 9                              | 1935140.583 | 6358912.354 | 5200 SET NAIL       | 443.12    |
| 10                             | 1935467.779 | 6358923.593 | 5130 SET HUB & TACK | 472.13    |
| 11                             | 1935604.177 | 6358815.363 | 5130 SET HUB & TACK | 477.06    |
| 12                             | 1935705.539 | 6358847.228 | 5130 SET HUB & TACK | 488.21    |
| 13                             | 1935792.994 | 6358708.853 | 5130 SET HUB & TACK | 498.37    |
| 14                             | 1935899.615 | 6358610.800 | 5130 SET HUB & TACK | 509.64    |
| 15                             | 1935959.420 | 6358448.066 | 5130 SET HUB & TACK | 512.57    |
| 16                             | 1935947.104 | 6358596.482 | 5130 SET HUB & TACK | 517.66    |
| 19                             | 1934476.653 | 6359303.643 | 5200 SET PK NAIL    | 395.92    |
| 20                             | 1934196.752 | 6359431.881 | 5200 SET PK NAIL    | 381.23    |
| 21                             | 1934140.342 | 6359505.546 | 5200 SET PK NAIL    | 387.58    |

| LAYOUT COORDINATE TABLE |             |             |                  |
|-------------------------|-------------|-------------|------------------|
| NO                      | NORTHING    | EASTING     | TYPE/STATION     |
| 1100                    | 1935948.995 | 6358350.559 | TEE/STA 1+00.00  |
| 1101                    | 1935952.327 | 6358384.072 | ELL/STA 1+33.68  |
| 1102                    | 1935953.038 | 6358420.629 | ELL/STA 1+70.24  |
| 1103                    | 1935956.738 | 6358610.927 | ELL/STA 3+60.58  |
| 1104                    | 1935887.800 | 6358610.523 | ELL/STA 4+29.52  |
| 1105                    | 1935884.244 | 6358614.037 | BC/STA 4+34+52   |
| 1106                    | 1935856.284 | 6358645.191 | EC/STA 4+76.40   |
| 1107                    | 1935712.476 | 6358826.117 | ELL/STA 7+07.52  |
| 1108                    | 1935708.103 | 6358828.543 | ELL/STA 7+12.52  |
| 1109                    | 1935681.752 | 6358820.997 | BC/STA 7+39.93   |
| 1110                    | 1935611.318 | 6358809.651 | EC/STA 8+11.44   |
| 1111                    | 1935594.249 | 6358808.959 | ELL/STA 8+28.52  |
| 1112                    | 1935465.039 | 6358928.101 | ELL/STA 9+99.21  |
| 1113                    | 1935387.508 | 6358927.712 | TEE/STA 10+81.81 |
| 1114                    | 1935364.345 | 6358927.596 | TEE/STA 11+04.97 |
| 1115                    | 1935350.210 | 6358927.524 | TEE/STA 11+19.11 |
| 1116                    | 1935331.055 | 6358927.429 | ELL/STA 11+38.26 |
| 1117                    | 1935301.874 | 6358938.620 | TEE/STA 11+69.52 |
| 1120                    | 1934246.969 | 6359401.368 | TEE/STA 1+00.00  |
| 1121                    | 1934244.167 | 6359402.852 | ELL/STA 1+03.17  |
| 1122                    | 1934190.655 | 6359446.430 | ELL/STA 1+72.18  |
| 1123                    | 1934136.897 | 6359513.791 | ELL/STA 2+58.36  |
| 1124                    | 1934130.038 | 6359527.456 | TEE/STA 2+73.65  |

**BASIS OF BEARINGS**  
 BETWEEN CONTROL POINT #8 AND CONTROL POINT #10  
 AS SHOWN ON THIS SHEET  
 BEARING: N04°25'08"W  
 DISTANCE: 152.11'



| NO. | DATE | REVISION | BY |
|-----|------|----------|----|
|     |      |          |    |
|     |      |          |    |
|     |      |          |    |
|     |      |          |    |
|     |      |          |    |
|     |      |          |    |
|     |      |          |    |
|     |      |          |    |
|     |      |          |    |
|     |      |          |    |

**Breje & Race**  
 CONSULTING ENGINEERS  
 475 Aviation Blvd., Suite 120 • Santa Rosa, CA 95403 • 707-576-1322  
 www.breje.com

SCALE: AS SHOWN  
 DWN BY: PIT  
 DATE: SEPTEMBER 2022  
 CHK BY: DYC/BLB

City of Santa Rosa  
**COBBLESTONE DRIVE ZONE**  
**R2-R4 WATER MAIN CONNECTION**  
**SHEET LAYOUT & SURVEY CONTROL**

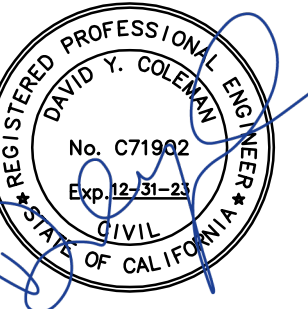
CONTRACT NO.  
C01999

SHEET 3 OF 8

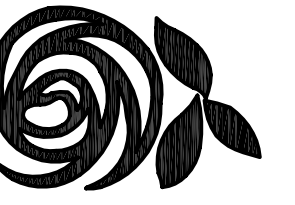
FILE NO. 2018-0040

07-29-22, rodriquez, \4407\dwg\4407\_00\4407.00\_COVER.dwg, TAB: 03-sheet layout and survey control





City of  
Santa Rosa



| NO. | DATE | REVISION | BY |
|-----|------|----------|----|
|     |      |          |    |
|     |      |          |    |
|     |      |          |    |
|     |      |          |    |
|     |      |          |    |
|     |      |          |    |
|     |      |          |    |
|     |      |          |    |
|     |      |          |    |

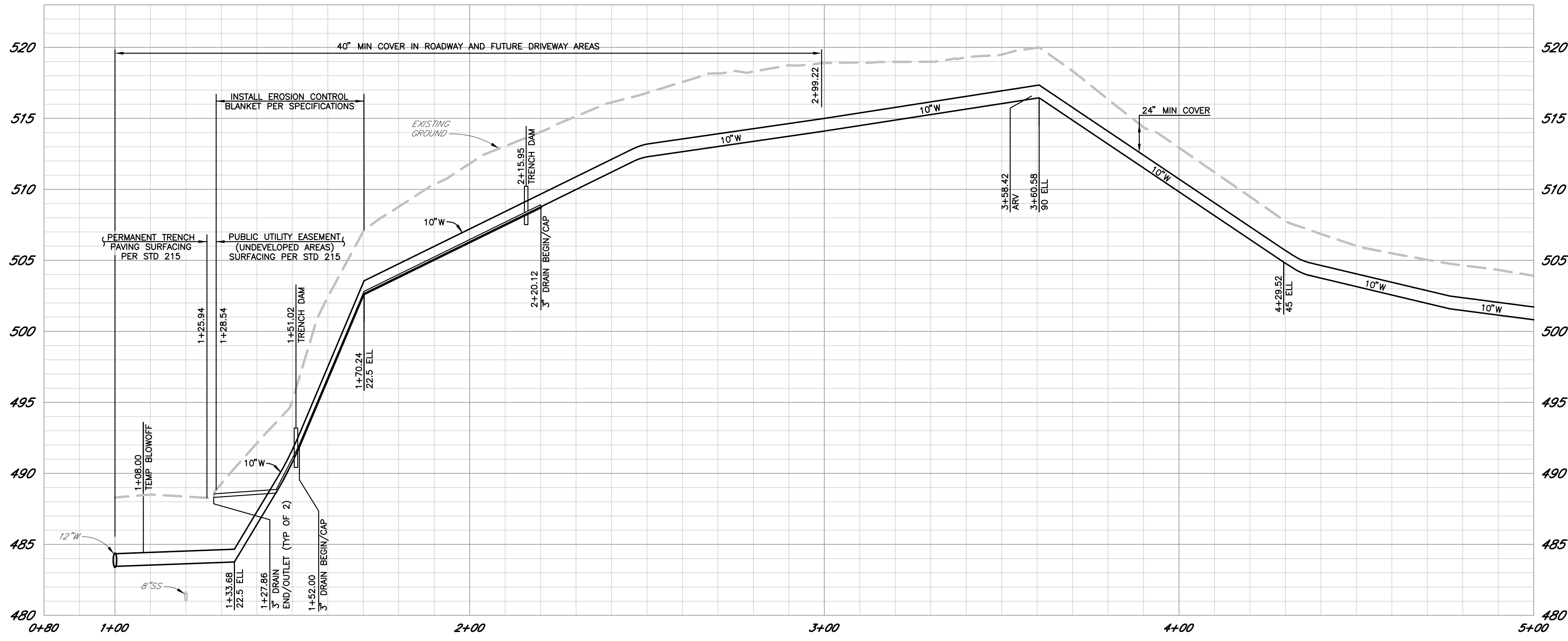
**Brelje & Race**  
CONSULTING ENGINEERS  
475 Aviation Blvd., Suite 120 • Santa Rosa, CA 95403 • 707-576-1322  
www.brce.com

City of Santa Rosa  
**COBBLESTONE DRIVE ZONE**  
**R2-R4 WATER MAIN CONNECTION**  
**UTILITY PLAN & PROFILE N.**  
**STA.1+00-STA.5+00**

CONTRACT NO.  
C01999  
SHEET 4 OF 8  
FILE NO. 2018-0040

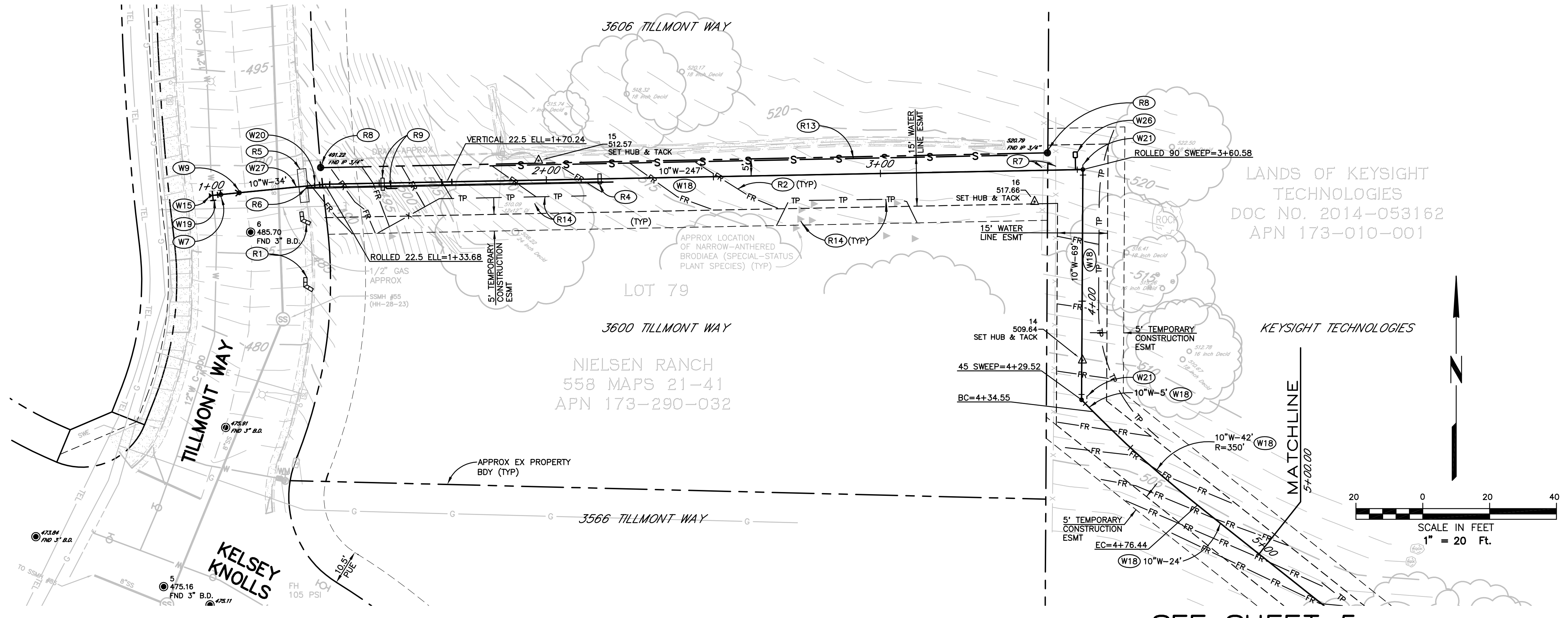
**CONSTRUCTION NOTES**  
(ONLY NOTES RELEVANT TO THIS SHEET ARE SHOWN)

- (W7) INSTALL FLG X MJ 10" GATE VALVE PER CITY STD 877.
- (W9) INSTALL TEMPORARY BLOWOFF PER CITY STD 859. INSERT SWAB WHILE INSTALLING PIPE.
- (W15) INSTALL THRUST BLOCK AT THE TIE IN PER CITY STD 854.
- (W18) INSTALL 10" HDPE DR11 WATER MAIN PER CITY STDS AND SPECIFICATIONS.
- (W19) CUT IN 12" MJ X 10" FLG TEE. UPON SATISFACTORY COMPLETION OF WATER MAIN TESTING, MAKE WATER MAIN TIE IN AS A SINGLE OPERATION UNDER AUTHORIZED CITY INSPECTION. APPROXIMATE PRESSURE AT TIE IN IS 101 PSI. RESTRAIN ALL JOINTS WITHIN 34' OF TEE.
- (W20) INSTALL 10" HDPE BUTT FUSION X MECHANICAL JOINT ADAPTER WITH STAINLESS STEEL STIFFENER AND STAINLESS STEEL BACK-UP RING. RESTRAIN ALL JOINTS BETWEEN ADAPTER AND CUT-IN TEE IN TILLMONT WAY.
- (W21) BLUE LOCATING POST, CARSONITE CRM OR APPROVED EQUIVALENT, PER CITY STDS, AND TRACER WIRE ACCESS BOX PER DETAIL, SHEET 8.
- (W26) INSTALL COMBINATION AIR AND VACUUM/AIR RELEASE VALVE SIMILAR TO CITY STD 883. SERVICE SADDLE SHALL BE SUITABLE FOR CONNECTION TO HDPE MAIN IN ACCORDANCE WITH THE SPECIFICATIONS.
- (W27) INSTALL 10" PVC DR14 WATER MAIN PER CITY STDS.
- (R1) INSTALL TEMPORARY GRAVEL BAG BERM PER DETAIL SHEET 8.
- (R2) INSTALL PERMANENT FIBER ROLL PER DETAIL SHEET 8.
- (R4) INSTALL TRENCH DAM PER DETAIL, SHEET 8.
- (R5) REPLACE 10 LF OF CURB AND GUTTER PER CITY STD 241.
- (R6) INSTALL 3" CURB DRAIN SIMILAR TO CITY STD 406A. DRAIN PIPE FLOWLINE SHALL MATCH GUTTER FLOWLINE.
- (R7) REMOVE EXISTING FENCING AS REQUIRED TO INSTALL WATER MAIN. INSTALL REPLACEMENT FENCING IN ACCORDANCE WITH THE SPECIFICATIONS.
- (R8) 3/4" IRON PIPE TO BE PROTECTED.
- (R9) INSTALL TRENCH DAM PER DETAIL, SHEET 8. WIDEN TRENCH AND TRENCH DAM AS NEEDED FOR PERFORATED SUBDRAIN AND SOLID DRAIN PIPE FROM UPPER TRENCH DAM.
- (R13) INSTALL SILT FENCE PER DETAIL SHEET 8. SILT FENCE SHALL BE INSTALLED ADJACENT TO PROPERTY LINE TO PREVENT CONSTRUCTION DEBRIS FROM ENTERING ADJACENT PROPERTY AT 3606 TILLMONT WAY.
- (R14) SPECIAL-STATUS PLANTS PREVIOUSLY IDENTIFIED WITH RED FLAGS DURING JUNE 2022 RARE PLANT SURVEY. PROTECT FROM DISTURBANCE DURING CONSTRUCTION WITH FENCING SIMILAR TO TREE PROTECTION FENCING.



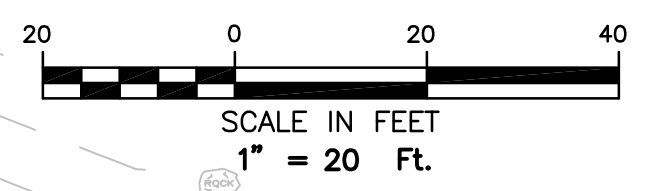
**PROFILE**  
SCALE: HORZ. 1" = 20'  
VERT. 1" = 5'

SEE SHEET 5



**PLAN**

SEE SHEET 5



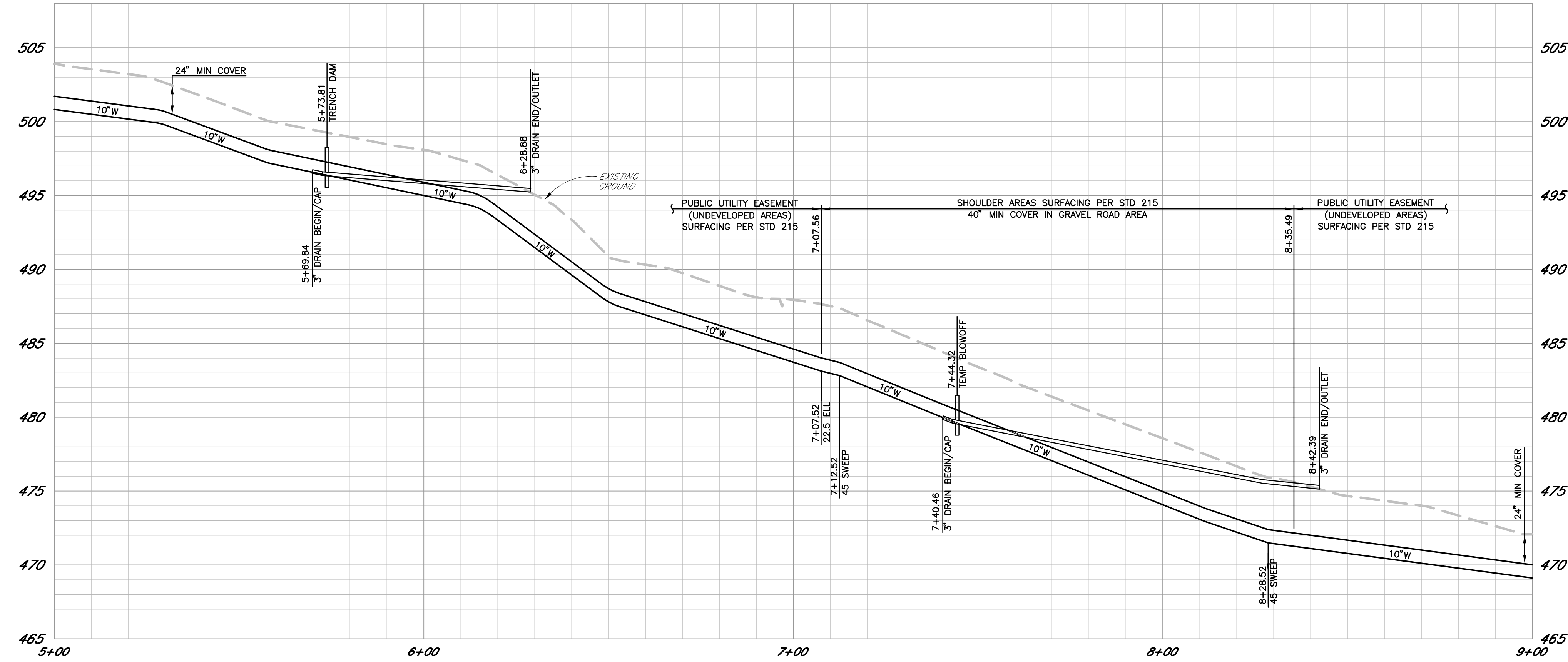
07-29-22 rodriquez 4407.dwg 4407.dwg 00\4407.00 BASE.dwg TAB: 4-P&P STA. 1+00-5+00



07-29-22 rodriguez 4407.dwg 4407 00\4407.00 BASE.dwg TAB: 5-P&P STA 5+00-9+00

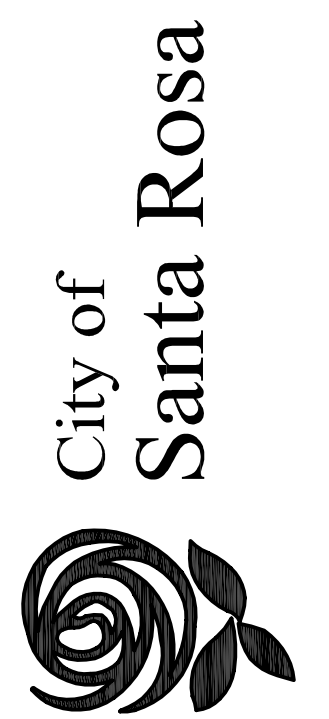
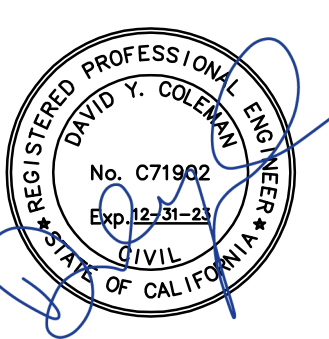
SEE SHEET 4

SEE SHEET 6



**CONSTRUCTION NOTES**  
(ONLY NOTES RELEVANT TO THIS SHEET ARE SHOWN)

- (W18) INSTALL 10" HDPE DR11 WATER MAIN PER CITY STDS AND SPECIFICATIONS.
- (W21) BLUE LOCATING POST, CARSONITE CRM OR APPROVED EQUIVALENT, PER CITY STDS, AND TRACER WIRE ACCESS BOX PER DETAIL, SHEET 8.
- (R2) INSTALL PERMANENT FIBER ROLL PER DETAIL SHEET 8.
- (R3) RESTORE FLOWLINE OF DITCH WHERE DISTURBED.
- (R4) INSTALL TRENCH DAM PER DETAIL, SHEET 8.
- (R11) TRENCH DAM DRAIN OUTLET PER DETAIL, SHEET 8.



| NO. | DATE | REVISION | BY |
|-----|------|----------|----|
|     |      |          |    |

**Brelje & Race**  
CONSULTING ENGINEERS  
475 Aviation Blvd., Suite 120 • Santa Rosa, CA 95403 • 707-576-1322  
www.breco.com

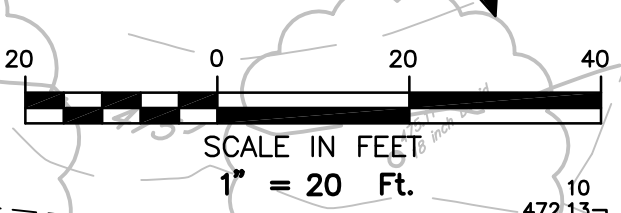
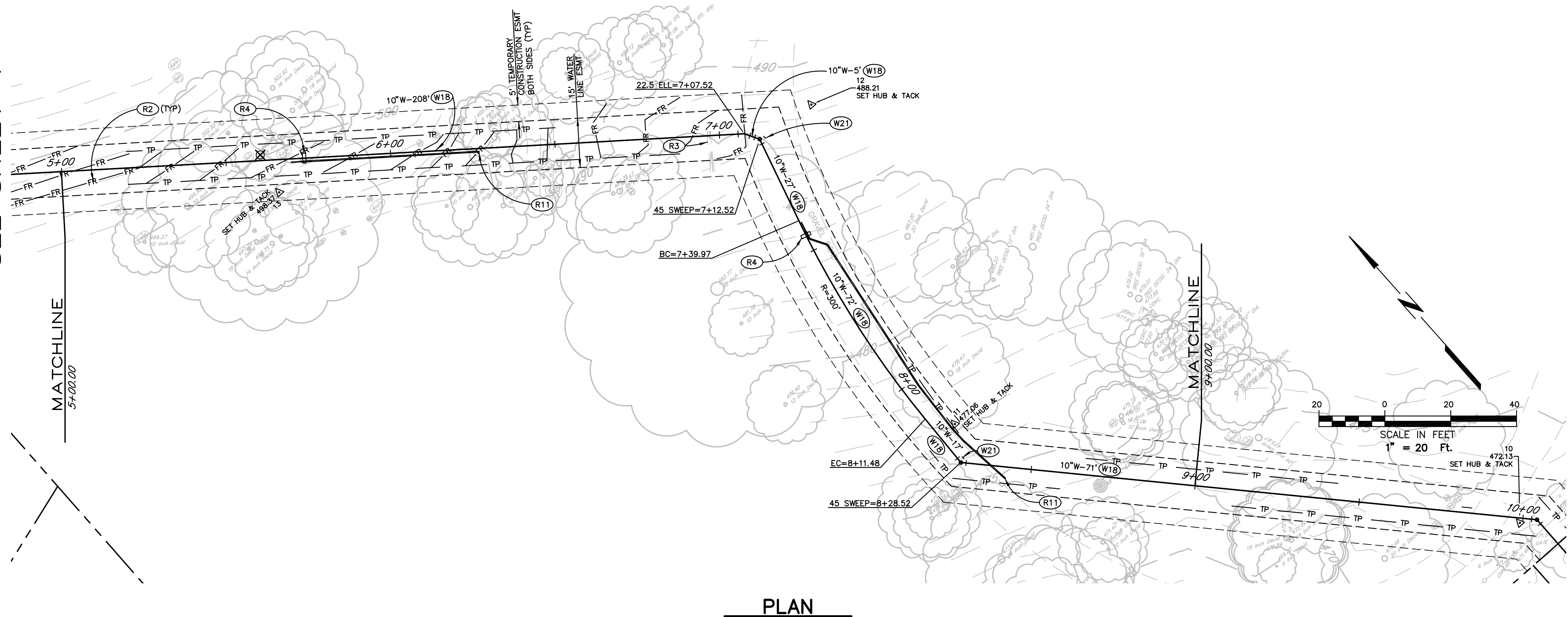
SCALE: AS SHOWN  
DWN BY: PIT  
DATE: SEPTEMBER 2022  
CHK BY: DYC/BLB

City of Santa Rosa  
**COBBLESTONE DRIVE ZONE**  
**R2-R4 WATER MAIN CONNECTION**  
**UTILITY PLAN & PROFILE N.**  
**STA.5+00-STA.9+00**

CONTRACT NO. C01999  
SHEET 5 OF 8  
FILE NO. 2018-0040

SEE SHEET 4

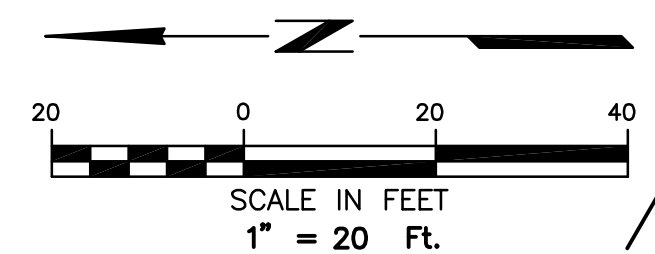
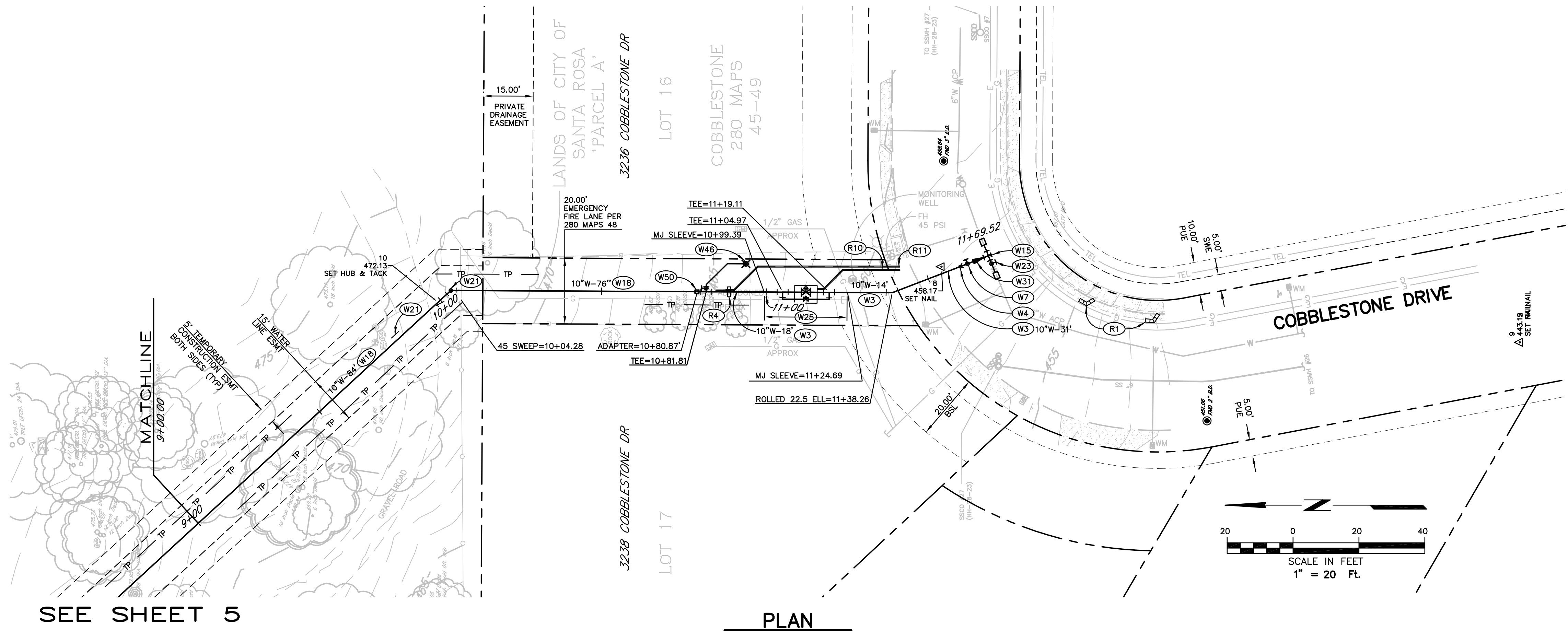
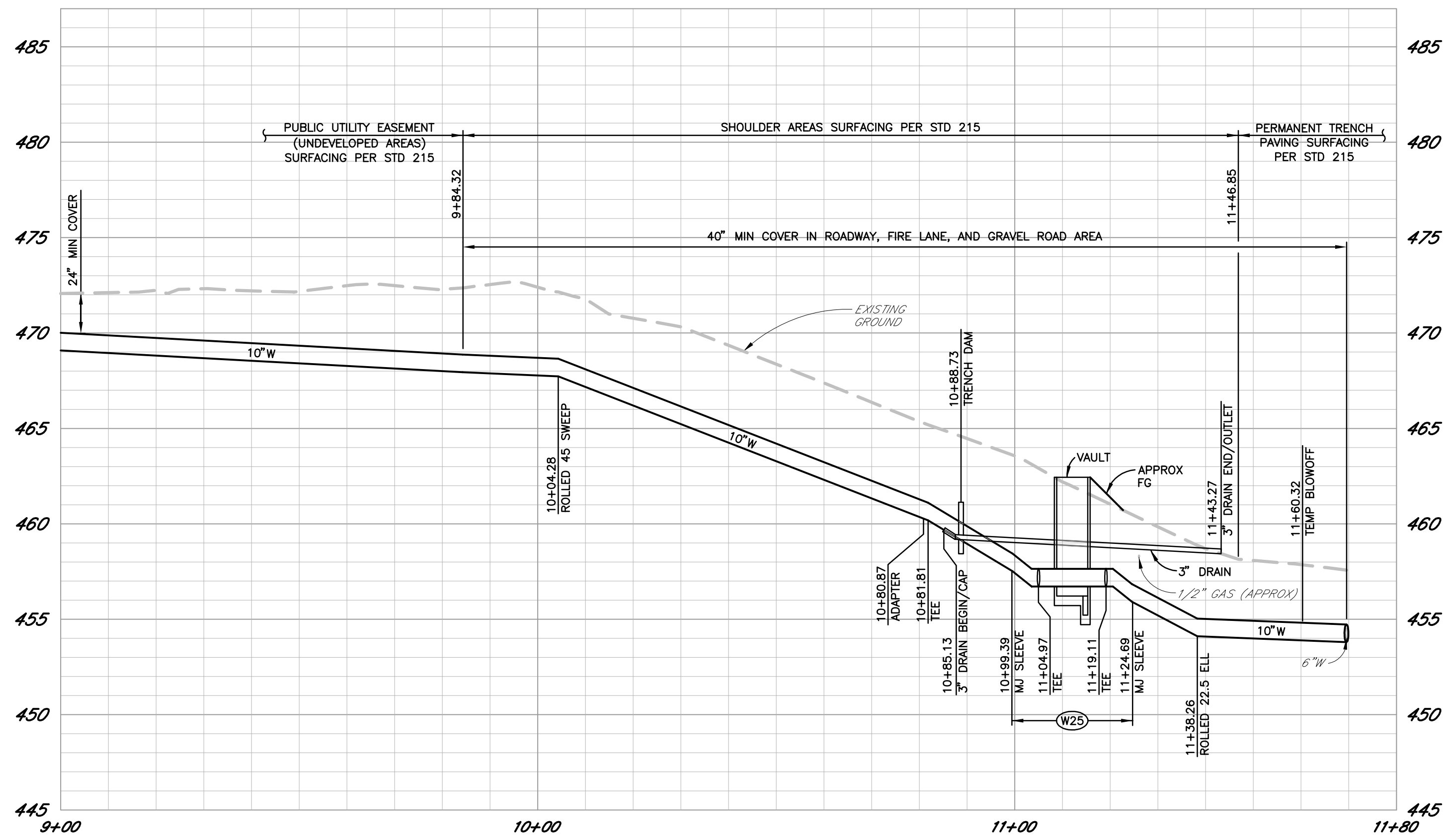
SEE SHEET 6





SEE SHEET 5

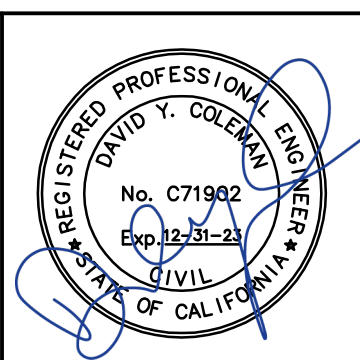
SEE SHEET 5



**CONSTRUCTION NOTES**

(ONLY NOTES RELEVANT TO THIS SHEET ARE SHOWN)

- (W3) INSTALL 10" PVC WATER MAIN PER CITY STDS.
- (W4) INSTALL TEMPORARY BLOWOFF SIMILAR TO CITY STD 862 WITH ELBOW AND VERTICAL STAND PIPE MATCHING SIZE OF MAIN. PERMANENT FEATURES INCLUDING CONCRETE METER BOX AND TRACER WIRE ARE NOT REQUIRED FOR TEMPORARY BLOWOFF.
- (W7) INSTALL FLG X MJ 10" GATE VALVE PER CITY STD 877.
- (W15) INSTALL THRUST BLOCK AT TIE IN PER CITY STD 854.
- (W18) INSTALL 10" HDPE DR11 WATER MAIN PER CITY STDS AND SPECIFICATIONS.
- (W21) BLUE LOCATING POST, CARSONITE CRM OR APPROVED EQUIVALENT, PER CITY STDS, AND TRACER WIRE ACCESS BOX PER DETAIL, SHEET 8.
- (W23) CUT IN FLG 6" TEE AND FLG 6" GV WITH PIPE, FITTINGS, AND COUPLINGS AS NEEDED TO CONNECT TO EX 6" ACP. UPON SATISFACTORY COMPLETION OF WATER MAIN TESTING, MAKE WATER MAIN TIE IN AS A SINGLE OPERATION UNDER AUTHORIZED CITY INSPECTION.
- (W25) SEE PRESSURE REDUCING VALVE ASSEMBLY DETAIL SHEET 8 FOR DETAILS IN THIS AREA BETWEEN MJ SLEEVES.
- (W31) INSTALL FLG 10"x6" CONCENTRIC REDUCER.
- (W46) INSTALL COMMERCIAL FIRE HYDRANT SIMILAR TO CITY STD 857. INSTALL TWO (2) 45 ELLS IN LATERAL TO PLACE HYDRANT 12' SOUTH OF TEE. RESTRAIN ALL JOINTS.
- (W50) INSTALL 10" HDPE BUTT FUSION X MECHANICAL JOINT ADAPTER WITH STAINLESS STEEL STIFFENER AND STAINLESS STEEL BACK-UP RING. RESTRAIN ALL JOINTS BETWEEN ADAPTER AND CUT-IN TEE IN COBBLESTONE DRIVE.
- (R1) INSTALL TEMPORARY GRAVEL BAG BERM PER DETAIL SHEET 8.
- (R4) INSTALL TRENCH DAM PER DETAIL, SHEET 8.
- (R10) INSTALL 3" DRAIN FROM VAULT COVER TO DAYLIGHT AT TRENCH DAM DRAIN OUTLET.
- (R11) TRENCH DAM DRAIN OUTLET PER DETAIL, SHEET 8.



City of  
**Santa Rosa**



| NO. | DATE | REVISION | BY |
|-----|------|----------|----|
|     |      |          |    |
|     |      |          |    |
|     |      |          |    |
|     |      |          |    |

**Brelje & Race**  
CONSULTING ENGINEERS  
475 Aviation Blvd., Suite 120 • Santa Rosa, CA 95403 • 707-576-1322  
www.brre.com

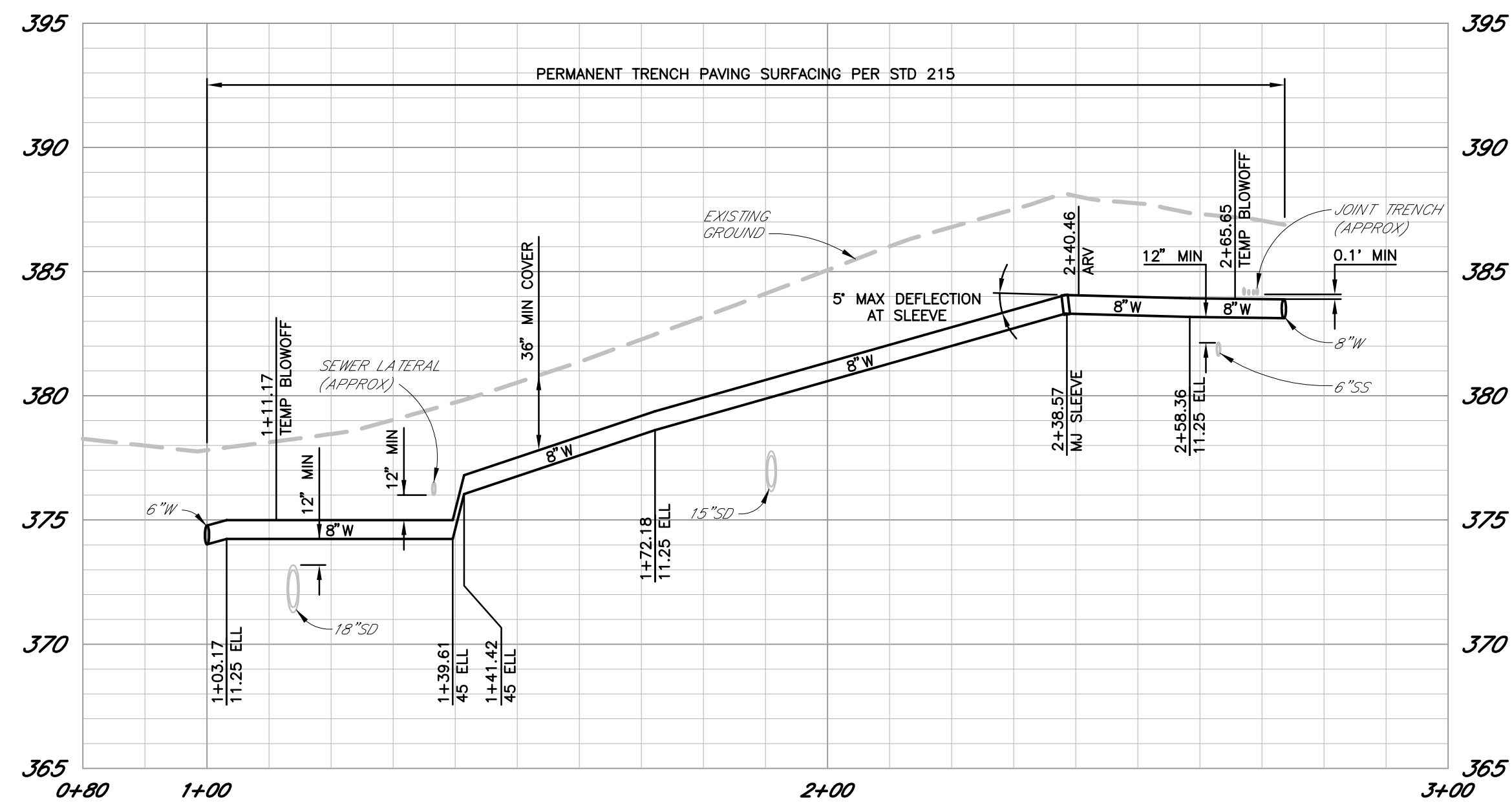
SCALE: AS SHOWN  
DWN BY: PIT  
DATE: SEPTEMBER 2022  
CHK BY: DYC/BLB

City of Santa Rosa  
**COBBLESTONE DRIVE ZONE**  
**R2-R4 WATER MAIN CONNECTION**  
**UTILITY PLAN & PROFILE**  
**N. STA. 9+00-STA. 11+80**

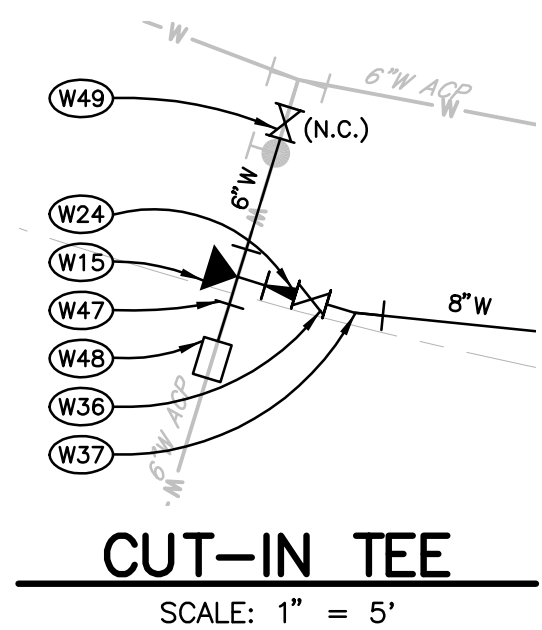
CONTRACT NO.  
C01999  
SHEET 6 OF 8  
FILE NO. 2018-0040



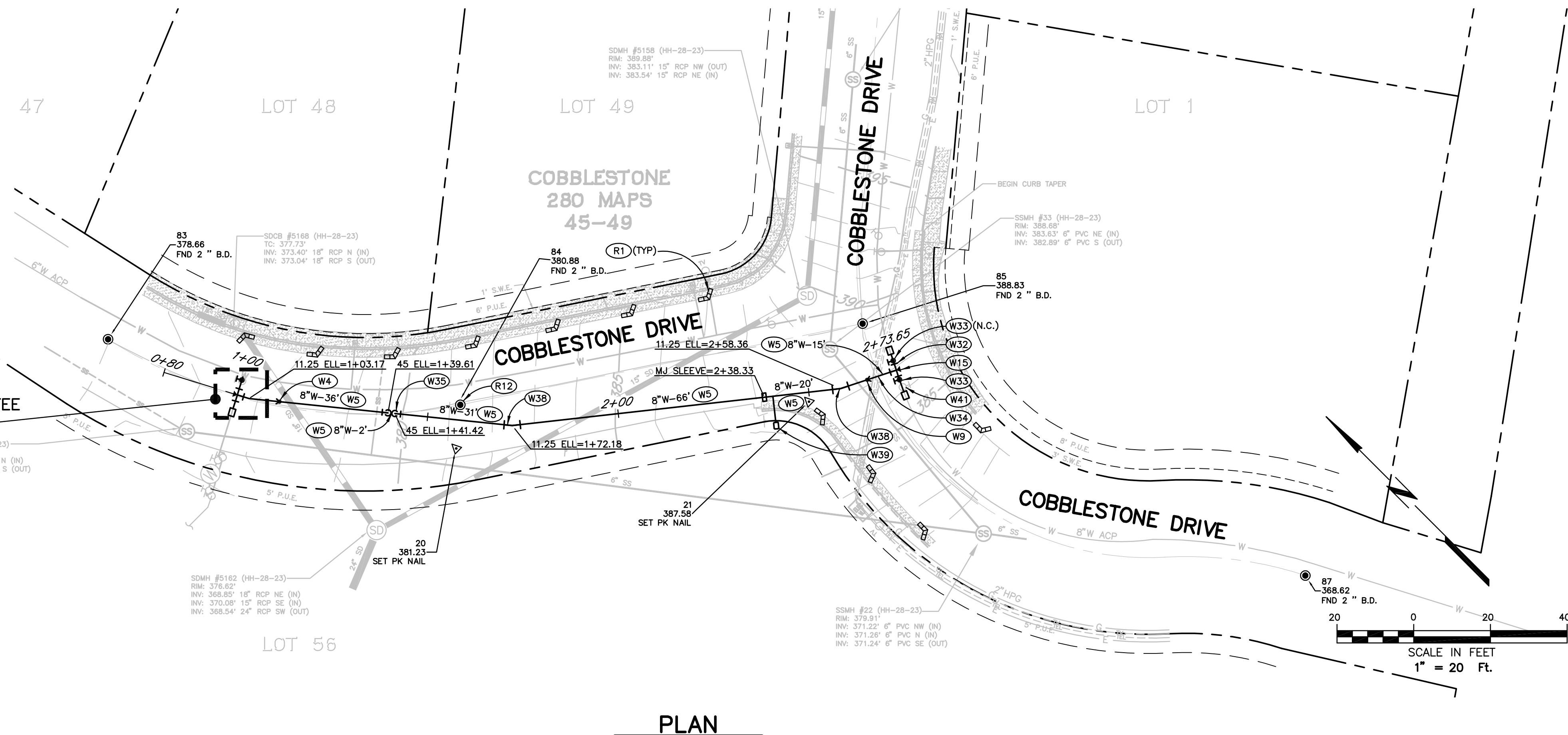
04-05-22 rodriguez 4407.dwg 4407.00\4407.00 BASE.dwg TAB: 7-P&P S COBBLESTONE



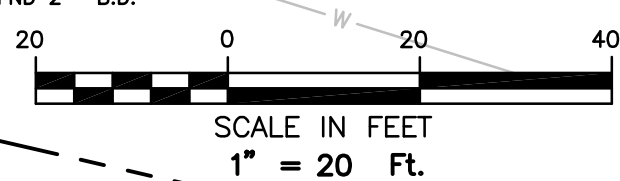
**PROFILE**  
SCALE: HORZ. 1" = 20'  
VERT. 1" = 5'



SEE CUT-IN TEE  
DETAIL, LEFT



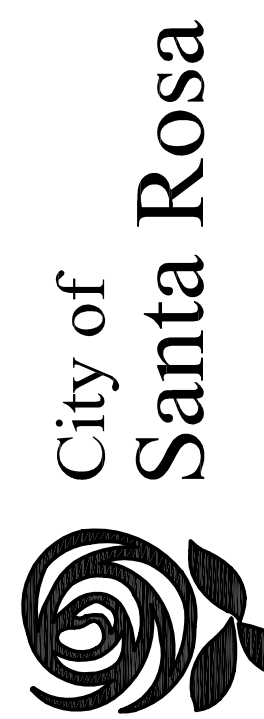
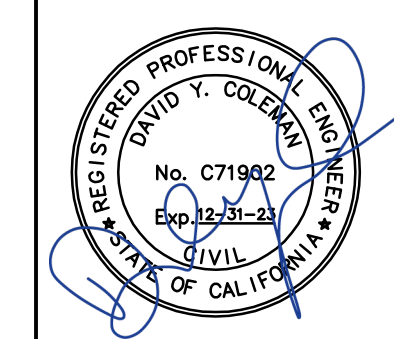
**PLAN**



**CONSTRUCTION NOTES**

(ONLY NOTES RELEVANT TO THIS SHEET ARE SHOWN)

- (W4) INSTALL TEMPORARY BLOWOFF SIMILAR TO CITY STD 862 WITH ELBOW AND VERTICAL STAND PIPE MATCHING SIZE OF MAIN. PERMANENT FEATURES INCLUDING CONCRETE METER BOX AND TRACER WIRE ARE NOT REQUIRED FOR TEMPORARY BLOWOFF.
- (W5) INSTALL 8" PVC WATER MAIN PER CITY STDS.
- (W9) INSTALL TEMPORARY BLOWOFF PER CITY STD 859. INSERT SWAB WHILE INSTALLING PIPE.
- (W15) INSTALL THRUST BLOCK AT TIE IN PER CITY STD 854.
- (W24) INSTALL FLG 8"X6" CONCENTRIC REDUCER.
- (W32) CUT IN 8" FLG TEE. UPON SATISFACTORY COMPLETION OF WATER MAIN TESTING, MAKE WATER MAIN TIE-IN AS A SINGLE OPERATION UNDER AUTHORIZED CITY INSPECTION.
- (W33) INSTALL FLG X MJ 8" GATE VALVE PER CITY STD 877 ON CUT-IN TEE WITH PIPE, FITTINGS, AND COUPLINGS AS NEEDED TO CONNECT TO EX 8" ACP.
- (W34) DEPTH OF EXISTING UTILITIES ARE UNKNOWN. IF VERTICAL CLEARANCE TO WATER MAIN IS LESS THAN 6", INSTALL FELT EXPANSION MATERIAL, STYROFOAM OR AN APPROVED EQUIVALENT BETWEEN FACILITIES.
- (W35) INSTALL HALF WATER MAIN LOWERING. RESTRAIN ALL JOINTS WITHIN 33 FEET OF ELBOW.
- (W36) INSTALL FLG 8" GATE VALVE PER CITY STD 877.
- (W37) INSTALL 8" FLG X MJ 11.25" BEND. RESTRAIN ALL JOINTS WITHIN 8' OF ELBOW.
- (W38) RESTRAIN ALL JOINTS WITHIN 11" OF ELBOW.
- (W39) INSTALL COMBINATION AIR AND VACUUM/AIR RELEASE VALVE PER CITY STD 883.
- (W41) REMOVE EXISTING 8" GATE VALVE, STEM RISER AND VALVE BOX.
- (W47) CUT IN MJ X FLG 6" TEE.
- (W48) INSTALL PIPE, FITTINGS, AND COUPLINGS AS NEEDED TO CONNECT TO EX 6" ACP. UPON SATISFACTORY COMPLETION OF WATER MAIN TESTING, MAKE WATER MAIN TIE IN AS A SINGLE OPERATION UNDER AUTHORIZED CITY INSPECTION.
- (W49) REMOVE AND REPLACE EXISTING 6" VALVE WITH NEW FLG X MJ GATE VALVE. POTHOLE PRIOR TO NEW CUT-IN TEE INSTALLATION TO VERIFY EXISTING TEE IS FLANGED.
- (R1) INSTALL TEMPORARY GRAVEL BAG BERM PER DETAIL SHEET 8.
- (R12) EXISTING MONUMENT TO REMAIN. PROTECT IN PLACE.



| NO. | DATE | REVISION | BY |
|-----|------|----------|----|
|     |      |          |    |
|     |      |          |    |
|     |      |          |    |
|     |      |          |    |
|     |      |          |    |

**Brelje & Race**  
CONSULTING ENGINEERS  
475 Aviation Blvd., Suite 120 • Santa Rosa, CA 95403 • 707-576-1322  
www.brco.com

SCALE: AS SHOWN      DATE: SEPTEMBER 2022  
DWN BY: PIT              CHK BY: DYC/BLB

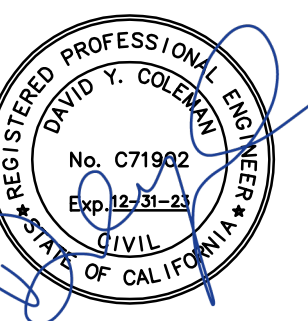
City of Santa Rosa  
**COBBLESTONE DRIVE ZONE**  
**R2-R4 WATER MAIN CONNECTION**  
**UTILITY PLAN & PROFILE S.**  
**STA. 1+00-STA. 3+00**

CONTRACT NO.  
C01999

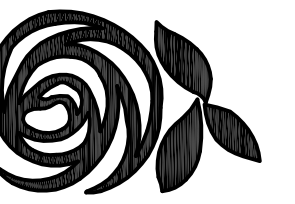
SHEET 7 OF 8

FILE NO. 2018-0040





City of Santa Rosa



| NO. | DATE | REVISION | BY |
|-----|------|----------|----|
|     |      |          |    |
|     |      |          |    |
|     |      |          |    |

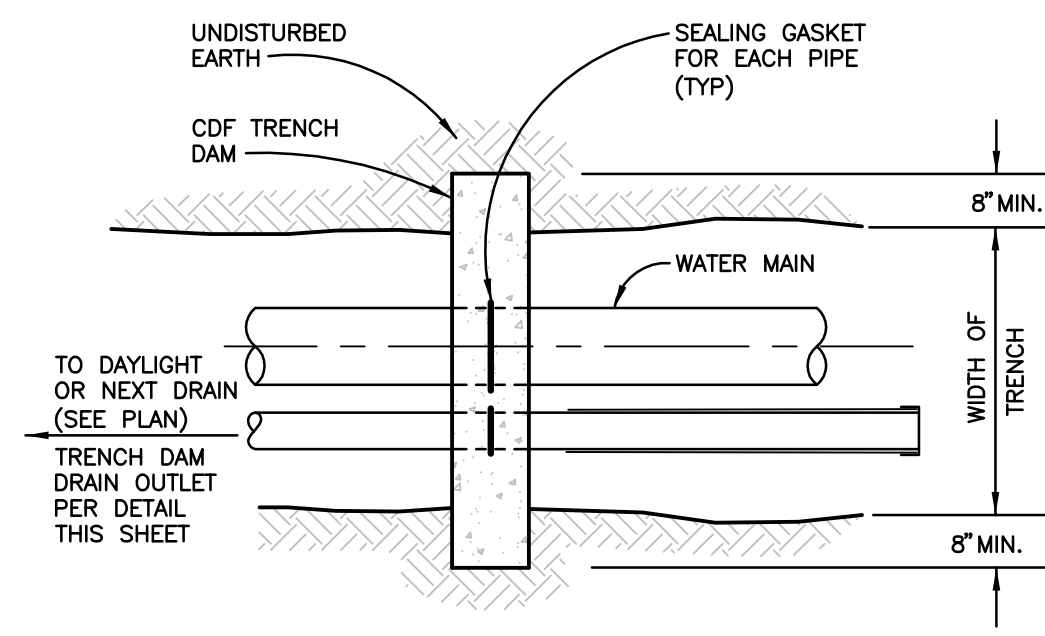
**Brelje & Race**  
CONSULTING ENGINEERS  
475 Aviation Blvd., Suite 120 • Santa Rosa, CA 95403 • 707-576-1322  
www.brco.com

City of Santa Rosa  
**COBBLESTONE DRIVE ZONE**  
**R2-R4 WATER MAIN CONNECTION**

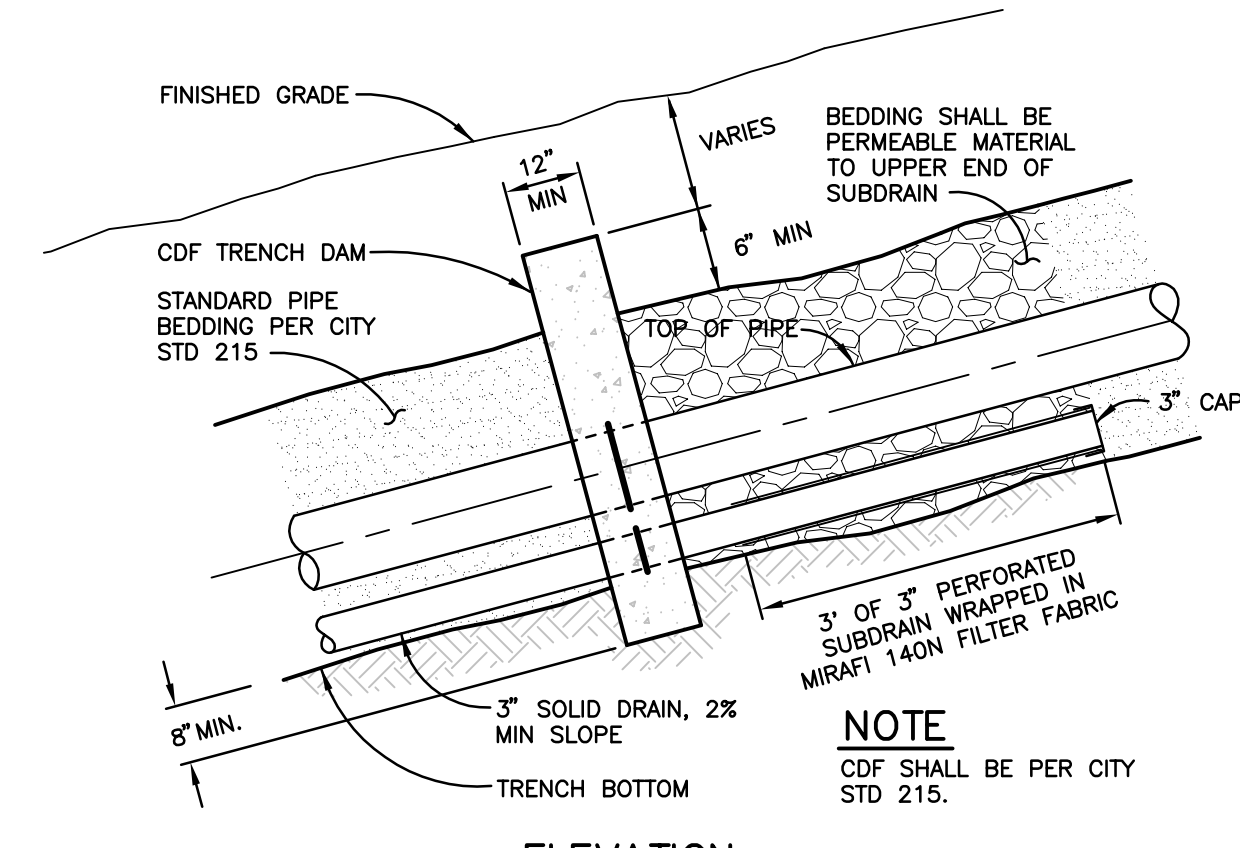
CONTRACT NO. C01999  
SHEET 8 OF 8  
FILE NO. 2018-0040

DATE: SEPTEMBER 2022  
CHK BY: DYC/BLB  
SCALE: AS SHOWN  
DWN BY: PIT

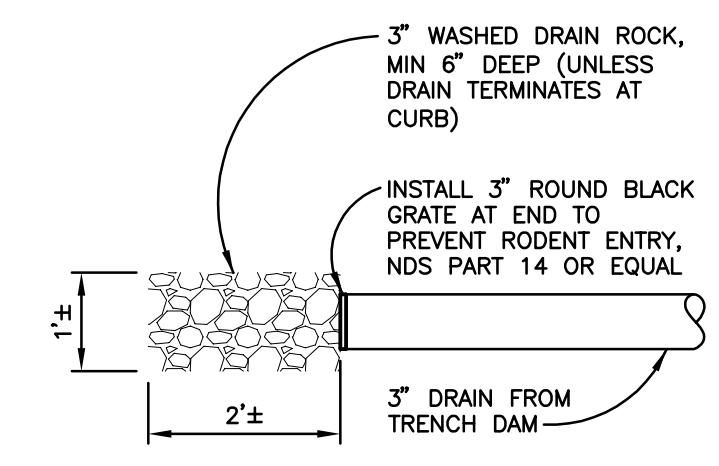
DETAILS



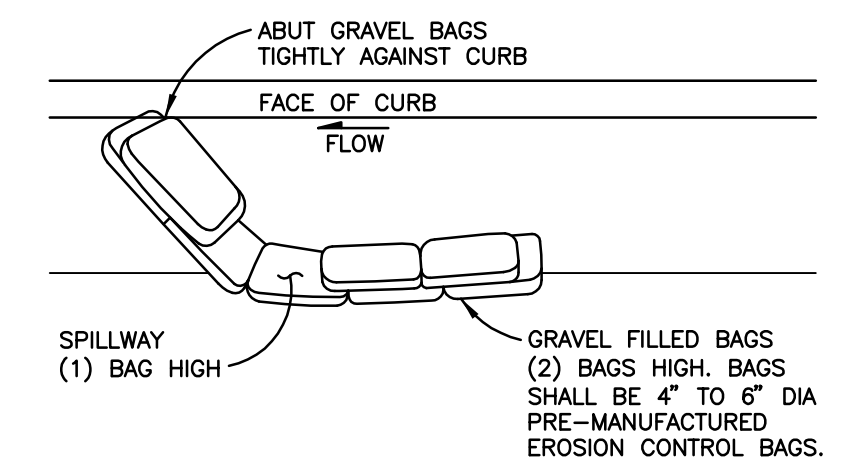
PLAN



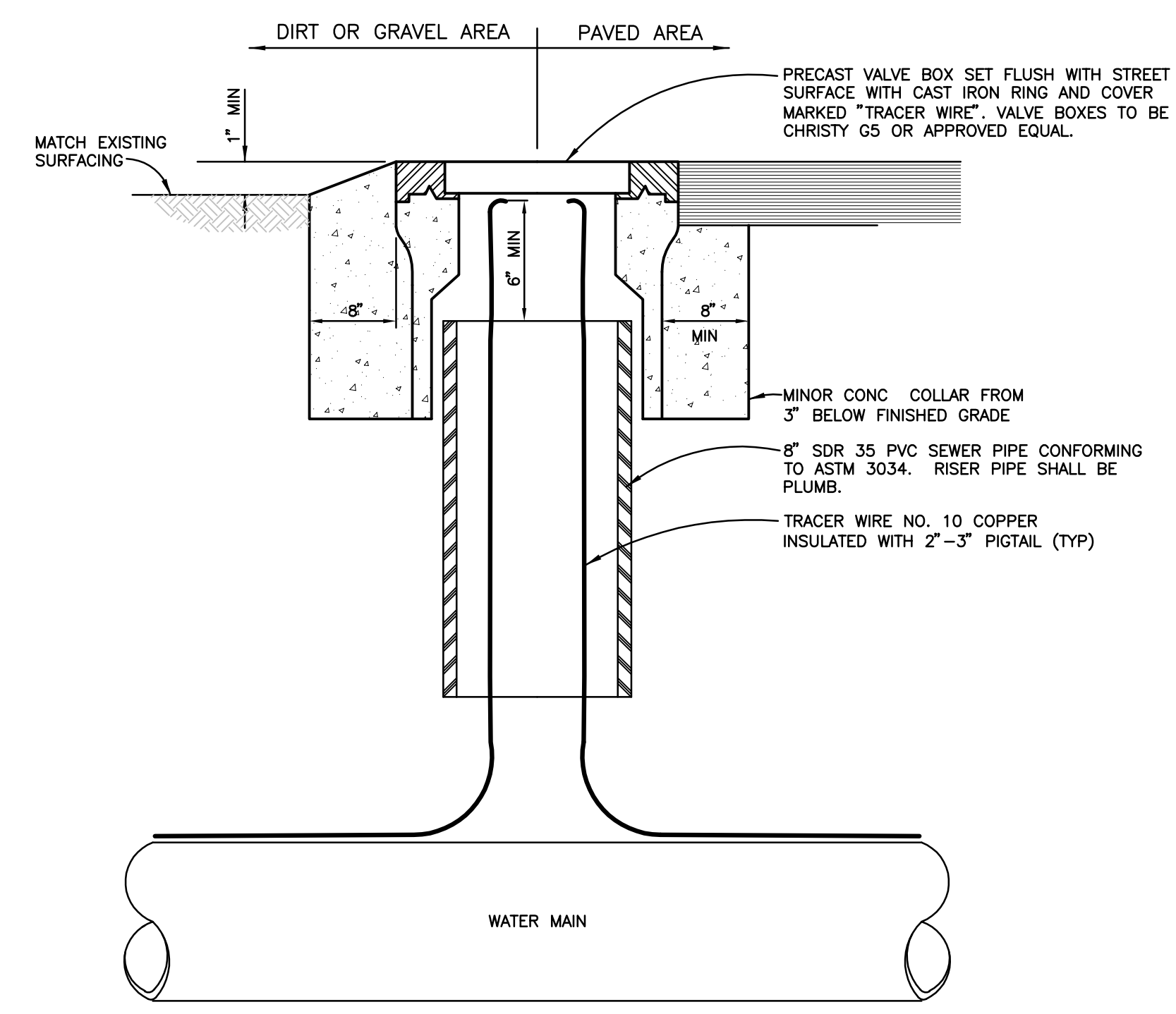
ELEVATION



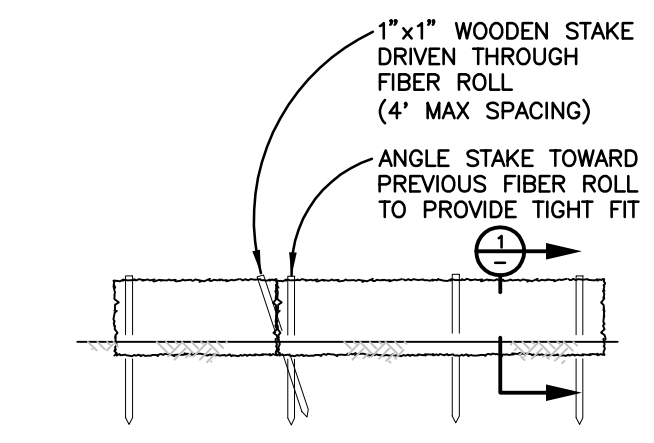
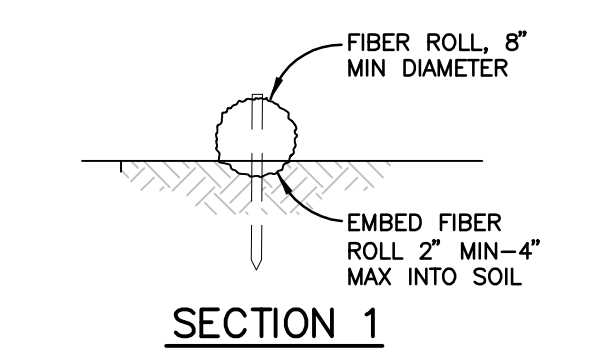
PLAN  
TRENCH DAM  
DRAIN OUTLET  
NOT TO SCALE



TEMPORARY  
GRAVEL BAG BERM  
NOT TO SCALE



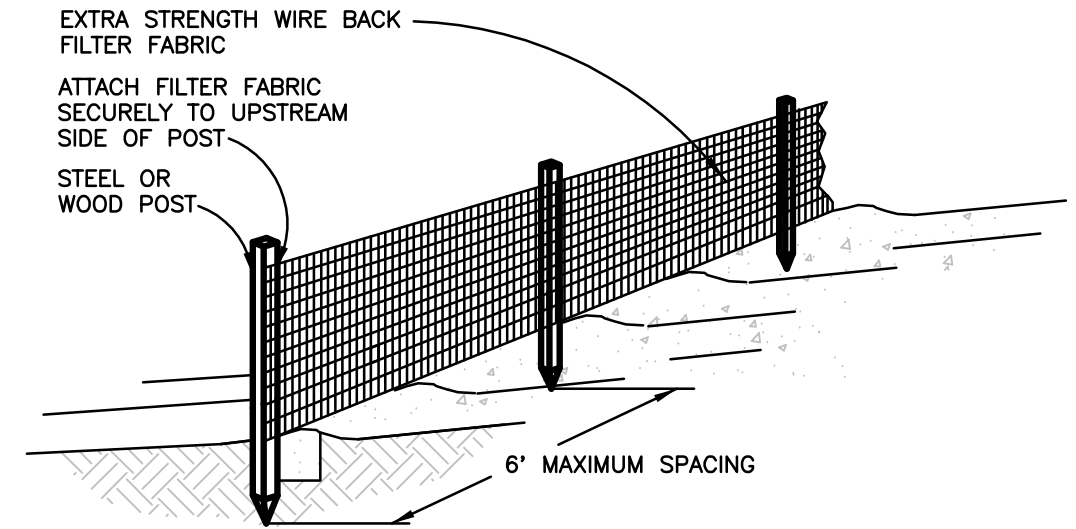
TRACER WIRE ACCESS BOX  
NOT TO SCALE



PERMANENT  
FIBER ROLL  
NOT TO SCALE

**NOTES**

- SILT FENCE SHALL BE INSTALLED BETWEEN THE TWO TILLMONT WAY PROPERTIES PRIOR TO ANY WORK WITHIN THE EASEMENT AREA.
- SILT FENCE SHALL BE INSTALLED TO PREVENT ANY CONSTRUCTION DEBRIS FROM ENTERING THE ADJACENT TILLMONT WAY PROPERTY.
- MATERIAL DEPOSITED UP AGAINST THE SILT FENCE SHALL BE DISPOSE OF ON A REGULAR BASIS.
- SILT FENCE SHALL BE REMOVED AND DISPOSED OF AFTER ALL OTHER WORK WITHIN THE EASEMENT AREA HAS BEEN COMPLETED.

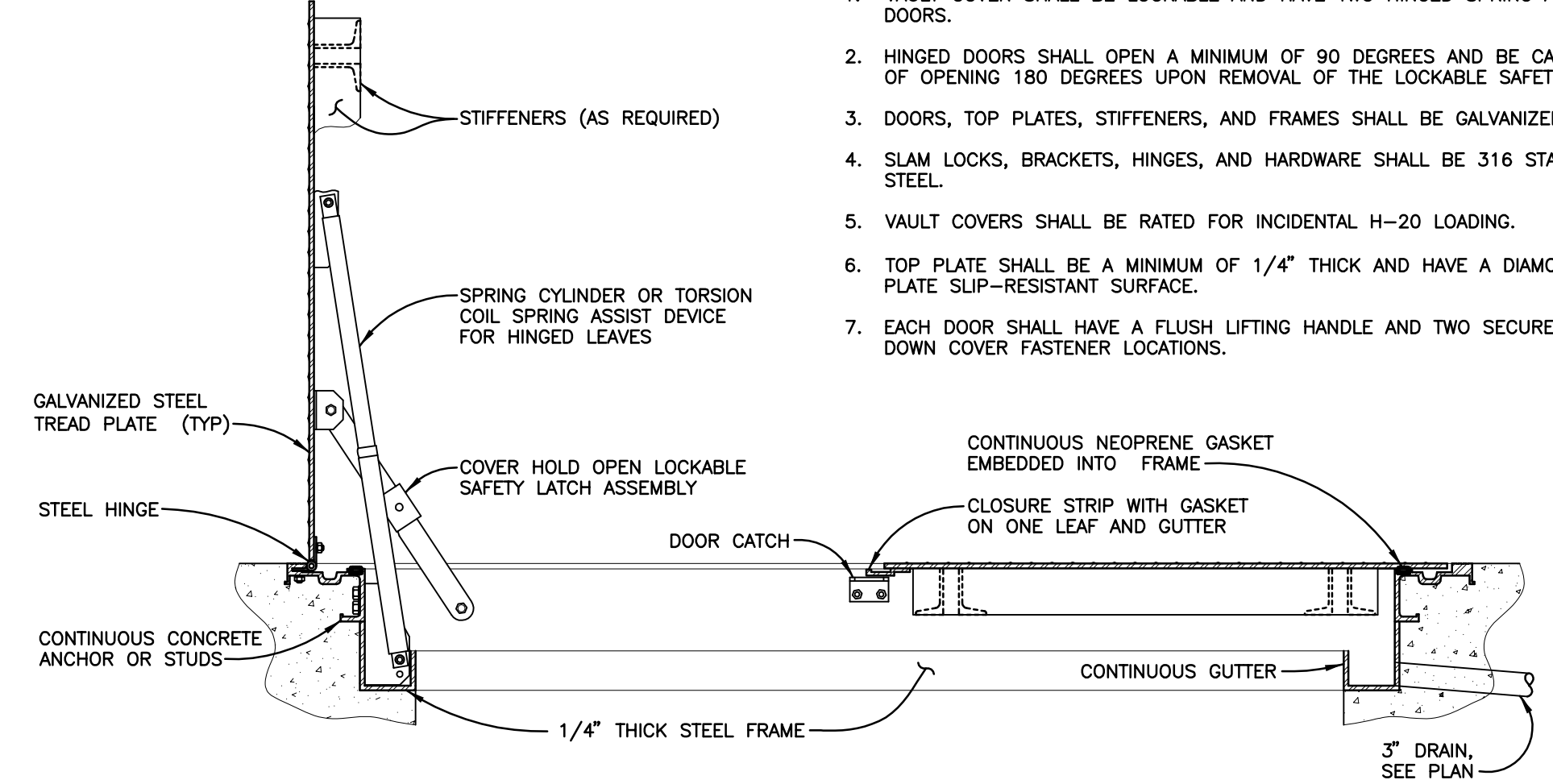


SECTION

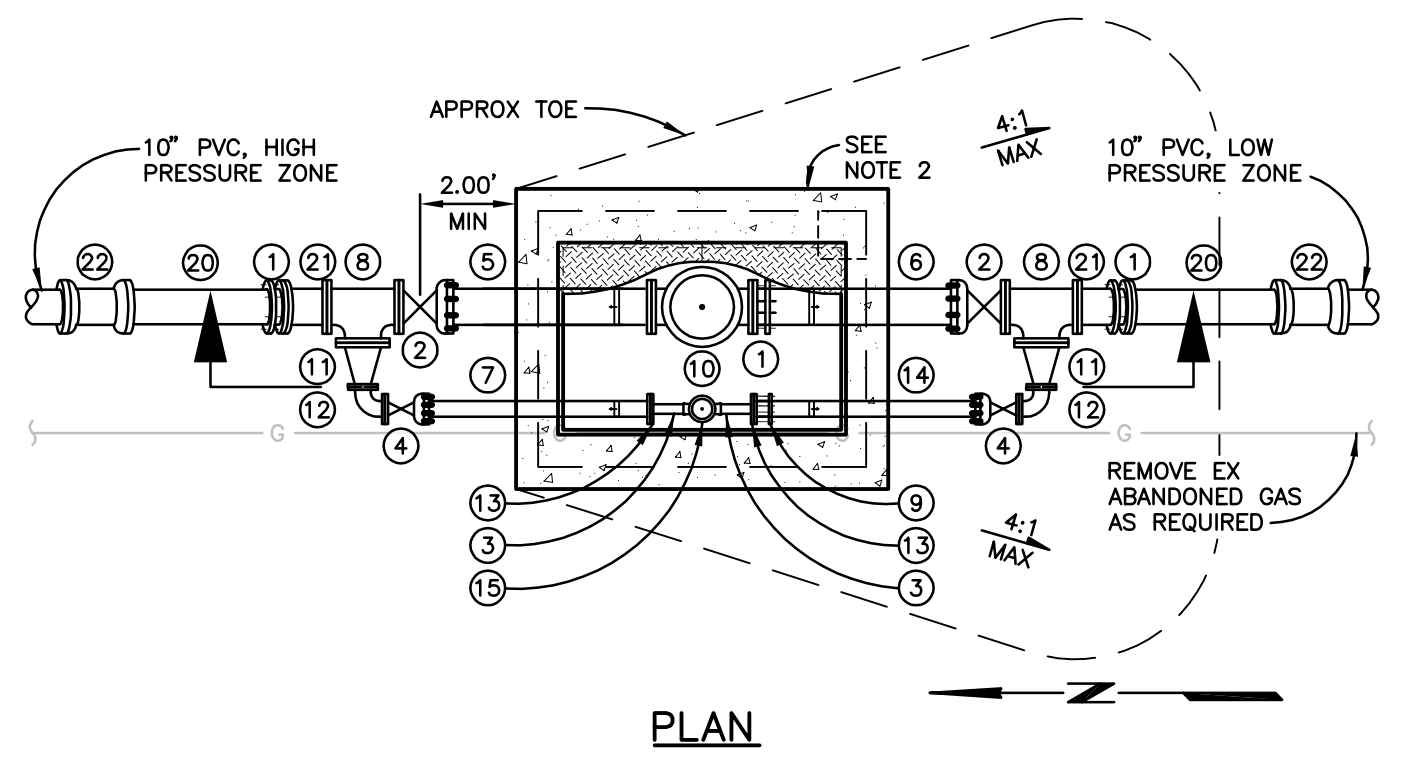
SILT FENCE  
NOT TO SCALE

**NOTES**

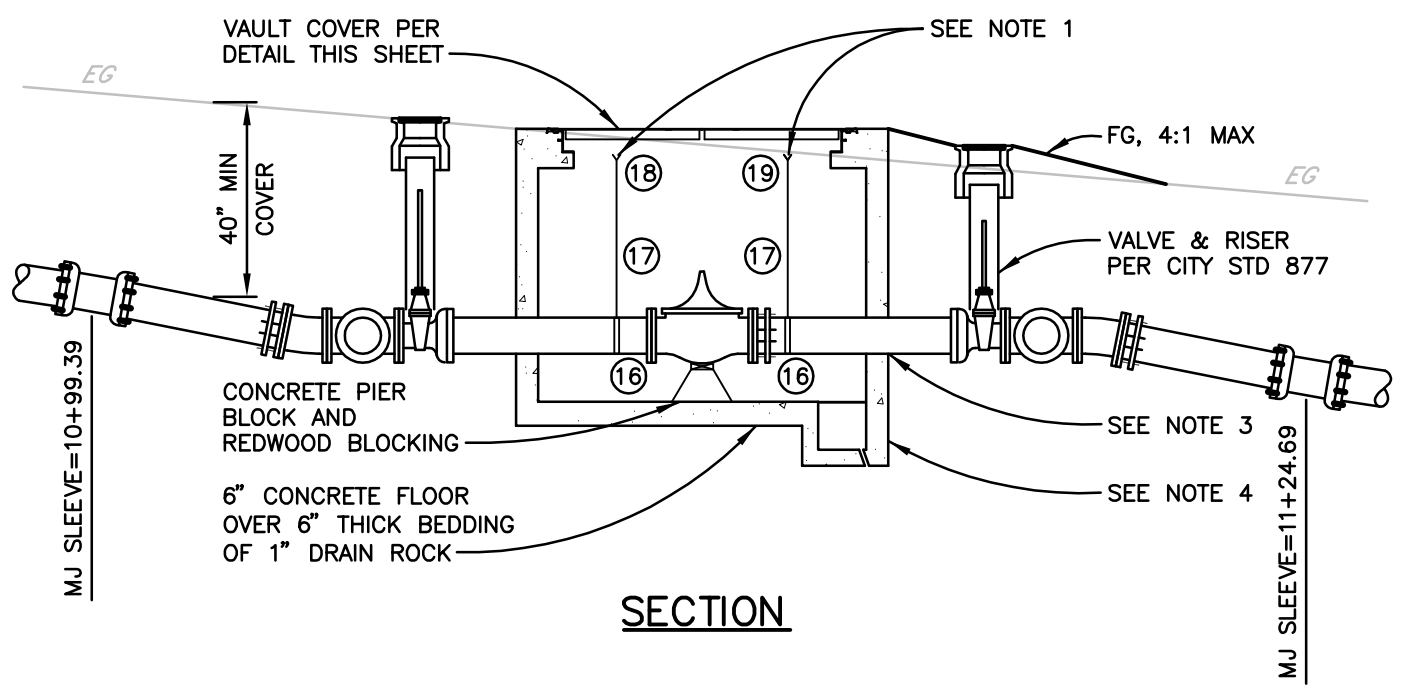
- VAULT COVER SHALL BE LOCKABLE AND HAVE TWO HINGED SPRING ASSISTED DOORS.
- HINGED DOORS SHALL OPEN A MINIMUM OF 90 DEGREES AND BE CAPABLE OF OPENING 180 DEGREES UPON REMOVAL OF THE LOCKABLE SAFETY LATCH.
- DOORS, TOP PLATES, STIFFENERS, AND FRAMES SHALL BE GALVANIZED STEEL.
- SLAM LOCKS, BRACKETS, HINGES, AND HARDWARE SHALL BE 316 STAINLESS STEEL.
- VAULT COVERS SHALL BE RATED FOR INCIDENTAL H-20 LOADING.
- TOP PLATE SHALL BE A MINIMUM OF 1/4\"/>



VAULT COVER  
NOT TO SCALE



PLAN



SECTION

PRESSURE REDUCING VALVE ASSEMBLY (SIMILAR TO CITY STD 881)  
NOT TO SCALE

**LEGEND**

- |                       |                       |
|-----------------------|-----------------------|
| 1 10\"/>              | 12 FLANGED 3\"/>      |
| 2 FLG X MJ 10\"/>     | 13 3\"/>              |
| 3 BRASS 2\"/>         | 14 DUCTILE IRON 3\"/> |
| 4 FLG X MJ 3\"/>      | 15 THREADED 2\"/>     |
| 5 DUCTILE IRON 10\"/> | 16 SADDLE & 3/4\"/>   |
| 6 DUCTILE IRON 10\"/> | 17 3/4\"/>            |
| 7 DUCTILE IRON 3\"/>  | 18 3/4\"/>            |
| 8 FLANGED 10\"/>      | 19 3/4\"/>            |
| 9 3\"/>               | 20 4\"/>              |
| 10 FLANGED 10\"/>     | 21 FLANGED 10\"/>     |
| 11 FLANGED 8\"/>      | 22 10\"/>             |

**NOTES**

- MAKE 3/4\"/>
- PRECAST VAULT WITH 5.0' WIDE X 6.5' LONG MINIMUM INSIDE DIMENSIONS AND 4.0' X 6.0' CLEAR OPENING.
- SEAL PIPE PENETRATIONS WITH HIGH STRENGTH NON-SHRINK GROUT AFTER PIPING IS COMPLETE.
- 12\"/>
- PRESSURE REDUCING VALVES SHALL BE CLA-VAL MODEL 90-01 FUSION BONDED EPOXY LINED AND COATED WITH STAINLESS STEEL SEAT OR APPROVED EQUAL.
- RESTRAINED JOINTS ARE REQUIRED FOR ALL NEW CONSTRUCTION FROM MAINLINE GATE VALVE TO VAULT. THRUST BLOCKS ARE ONLY REQUIRED WHERE EXISTING SERVICES ARE BEING MODIFIED AND RESTRAINED JOINTS ARE NOT USED.
- PRESSURE SETTING FOR 10\"/>

07-29-22 rodriquez 4407.dwg 4407.00/4407.00 DETAIL.dwg TAB: 8-DETAIL