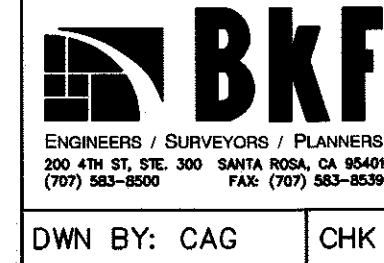
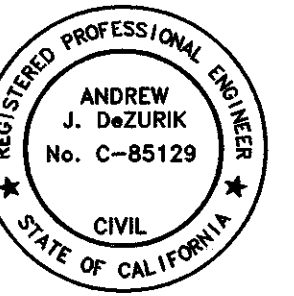


CONTRACT No. C02041

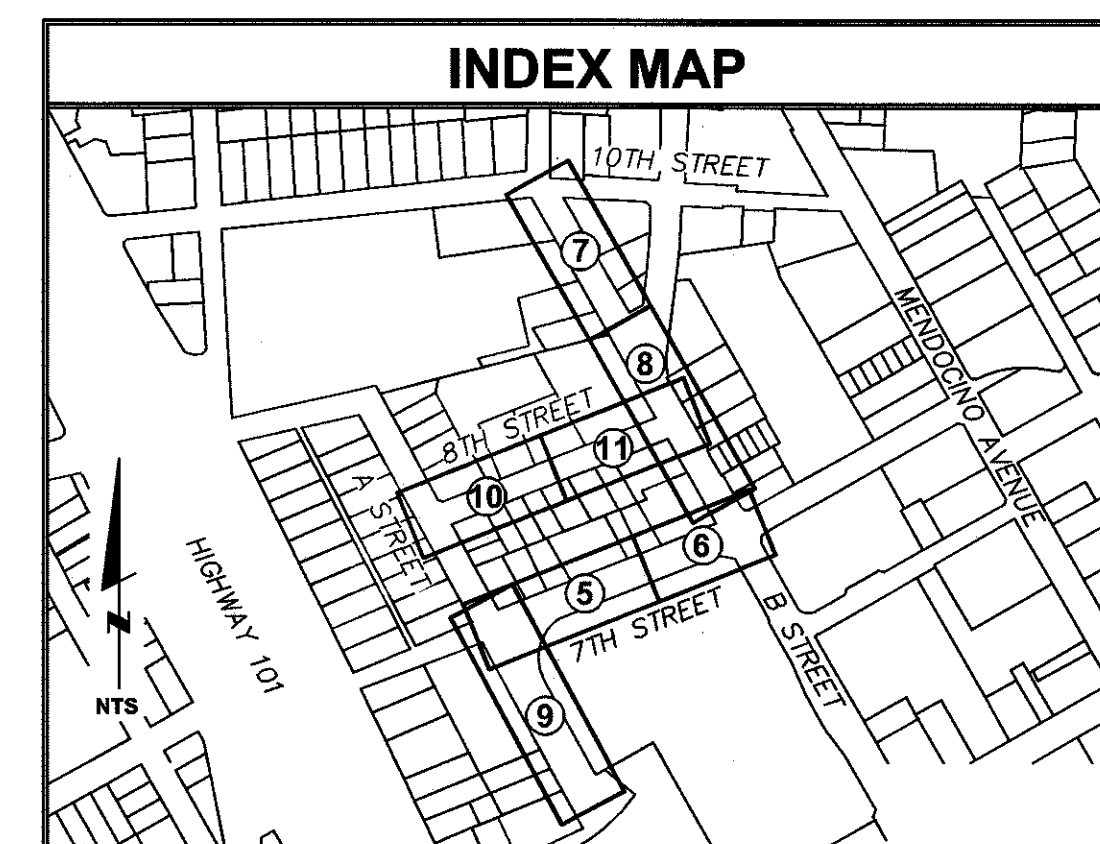
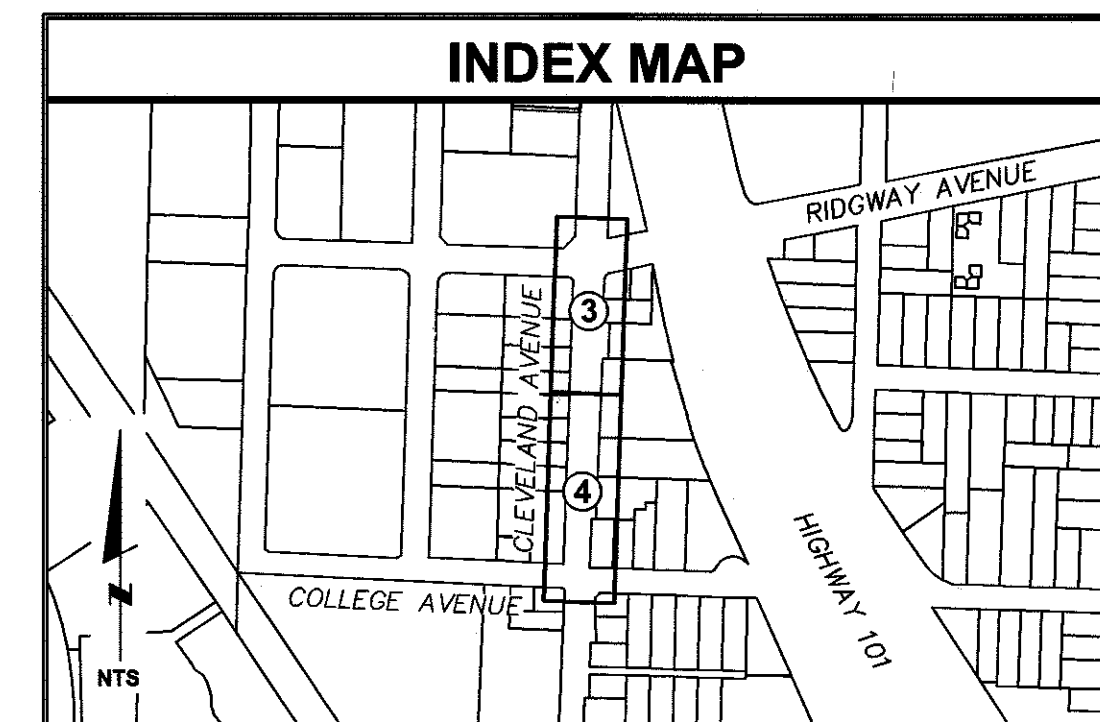
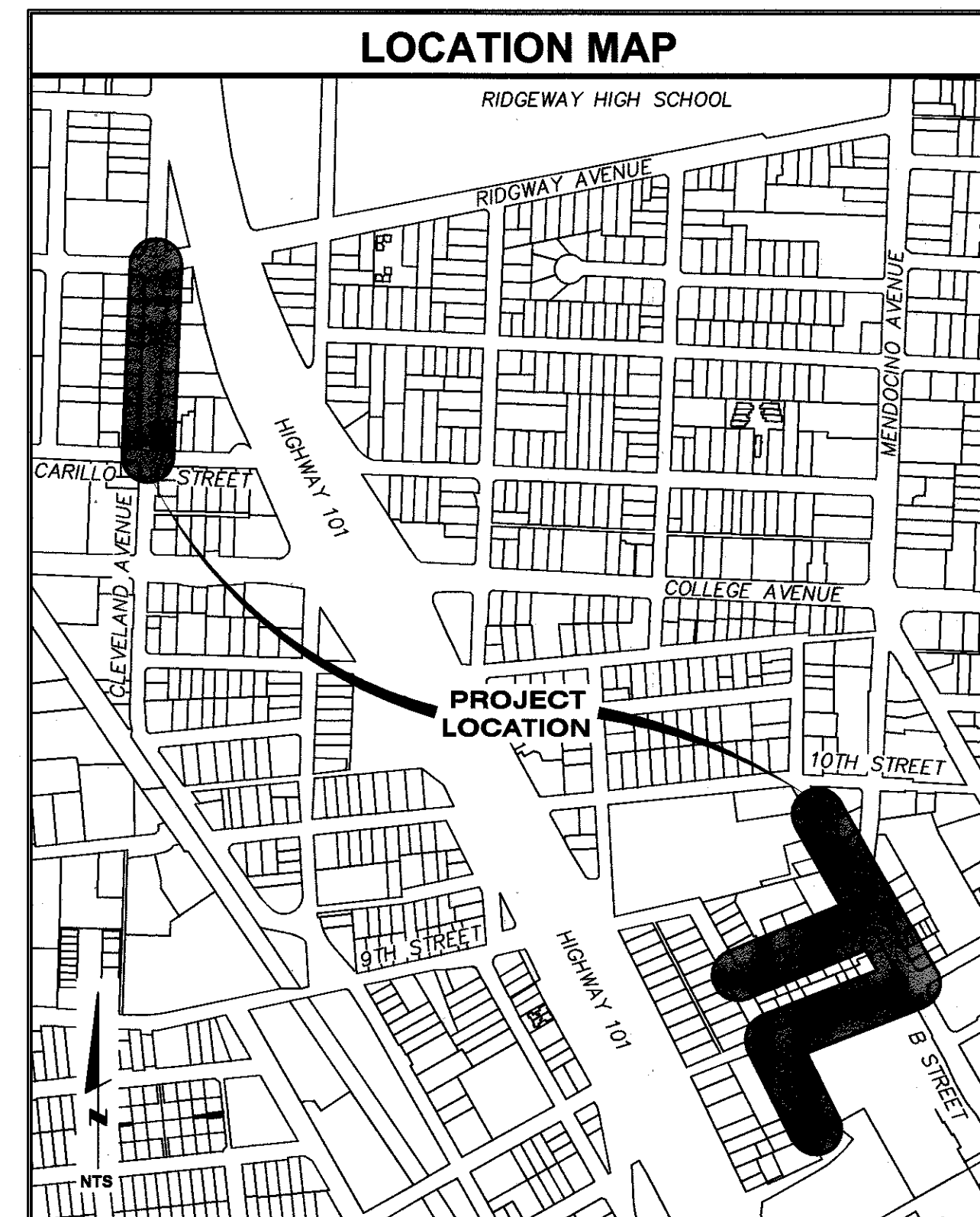


 02/28/2022  
ANDREW J. DEZURIK C-85129



## GENERAL NOTES

1. ALL WORKSMANSHIP MATERIALS AND CONSTRUCTION SHALL CONFORM TO THE CITY OF SANTA ROSA STANDARD PLANS, THE CONSTRUCTION SPECIFICATIONS FOR PUBLIC IMPROVEMENTS, THE SPECIAL PROVISIONS FOR THIS PROJECT AND THE STATE STANDARD SPECIFICATIONS AND STANDARD PLANS. THE CONTRACTOR IS RESPONSIBLE FOR UNDERSTANDING ALL STANDARDS PERTAINING TO THIS PROJECT.
2. THE CONTRACTOR SHALL CALL UNDERGROUND SERVICE ALERT USA NORTH AT 811 NO LESS THAN 2 WORKING DAYS PRIOR TO ANY EXCAVATION FOR MARK OUTS OF EXISTING UNDERGROUND FACILITIES IN ACCORDANCE WITH SECTION 8-1.10 OF THE SPECIAL PROVISIONS.
3. THE LOCATIONS OF UNDERGROUND UTILITIES AND OTHER OBSTACLES SHOWN ON THE PLANS ARE BASED ON THE BEST AVAILABLE INFORMATION. THE CONTRACTOR SHALL POTHOLE AND DETERMINE THE EXACT LOCATION OF ALL POTENTIAL CONFLICTS IN ACCORDANCE WITH U.S.A. LAWS AND THESE SPECIAL PROVISIONS AND THE STANDARD SPECIFICATIONS. IF ANY UNMARKED UTILITIES ARE ENCOUNTERED, OR IF UNABLE TO LOCATE A MARKED UTILITY AFTER POT HOLING, THE CONTRACTOR SHALL IMMEDIATELY NOTIFY THE OWNER OF THAT UTILITY AND THE CITY ENGINEER.
4. ALL SEWER MANHOLES, MAINLINE CLEANOUTS AND WATER VALVES THAT ARE ON ACTIVE SYSTEMS SHALL BE ACCESSIBLE TO CITY PERSONNEL AT ALL TIMES AND SHALL BE BROUGHT TO GRADE WITHIN 48 HOURS OF PAVING.
5. OVERHEAD UTILITY SERVICE DROPS ARE NOT SHOWN ON THE PLANS. THE CONTRACTOR SHALL INVESTIGATE THE SITE AND BE AWARE OF LIMITED CLEARANCES UNDER OVERHEAD UTILITY LINES AND LOW HANGING TREE BRANCHES. THE CONTRACTOR'S TRUCKS AND EXCAVATION EQUIPMENT SHALL BE SIZED SO THAT OVERHEAD WIRES AND TREE BRANCHES ARE NOT DAMAGED.
6. THE CONTRACTOR SHALL PROTECT AND PRESERVE CITY MONUMENTS. THE CONTRACTOR SHALL COORDINATE WITH THE CITY ENGINEER 10 WORKING DAYS IN ADVANCE FOR REFERENCING OF EXISTING MONUMENTS TO BE DISTURBED. THE CONTRACTOR SHALL RECONSTRUCT DISTURBED MONUMENTS IN ACCORDANCE WITH CITY STANDARD 280.
7. ALL EXCAVATED MATERIAL SHALL BE DISPOSED OF AS GENERATED AND AT NO TIME SHALL THE CONTRACTOR PLACE EXCAVATED MATERIAL AT THE WORK SITE.
8. THE CONTRACTOR SHALL ONLY REMOVE EXISTING TREES OR SHRUBS AS NOTED ON THE PLANS OR AS DIRECTED BY THE ENGINEER.
9. FOR CLARITY OF EXISTING SUBSURFACE CONDITIONS, NOT ALL CROSSWALKS, STOP BARS, OR EXISTING PAVEMENT MARKINGS ARE SHOWN ON THE PLANS. TRAFFIC STRIPES, RAISED PAVEMENT MARKERS AND PAVEMENT MARKINGS DAMAGED DUE TO THE CONTRACTOR'S OPERATIONS SHALL BE REPLACED PER CITY OF SANTA ROSA TRAFFIC STANDARDS PART III, TRAFFIC MARKINGS. PATCHING OF DAMAGED MARKINGS WILL NOT BE ALLOWED WITHOUT PRIOR APPROVAL FROM ENGINEERING. ALL DAMAGED RAISED PAVEMENT (NON-REFLECTIVE) MARKERS MUST BE CERAMIC.
10. CONSTRUCTION CONTRACTOR AGREES THAT IN ACCORDANCE WITH GENERALLY ACCEPTED CONSTRUCTION PRACTICES, THAT THE CONSTRUCTION CONTRACTOR WILL BE REQUIRED TO ASSUME SOLE AND COMPLETE RESPONSIBILITY FOR JOB SITE CONDITIONS DURING THE COURSE OF CONSTRUCTION OF THE PROJECT, INCLUDING THE SAFETY OF ALL PERSONS AND PROPERTY; THAT THIS REQUIREMENT SHALL BE MADE TO APPLY CONTINUOUSLY AND NOT BE LIMITED TO NORMAL WORKING HOURS, AND CONSTRUCTION CONTRACTOR FURTHER AGREES TO DEFEND AND INDEMNIFY TO HOLD DESIGN PROFESSIONAL, THE ENGINEER, AND THE CITY OF SANTA ROSA AND ITS EMPLOYEES HARMLESS FOR ANY AND ALL LIABILITY, REAL OR ALLEGED IN CONNECTION WITH THE PERFORMANCE OF WORK ON THIS PROJECT, EXCEPTING LIABILITY ARISING FROM THE NEGLIGENCE OF ANY CONSULTING ENGINEER.



## RECORD PLAN DATA

PROJECT START: \_\_\_\_\_  
PROJECT END: \_\_\_\_\_  
CITY PROJECT MANAGER: \_\_\_\_\_  
GEN. CONTRACTOR: \_\_\_\_\_  
SUPERINTENDENT: \_\_\_\_\_  
UNDERGROUND CONTRACTOR: \_\_\_\_\_  
FOREMAN: \_\_\_\_\_  
SEWER PIPE TYPE: \_\_\_\_\_  
MANUFACTURER: \_\_\_\_\_  
SEWER FITTINGS MANUFACTURER: \_\_\_\_\_  
M.H. MANUFACTURER: \_\_\_\_\_  
WATER PIPE TYPE: \_\_\_\_\_  
MANUFACTURER: \_\_\_\_\_  
WATER VALVE MANUFACTURER: \_\_\_\_\_  
WATER FITTINGS MANUFACTURER: \_\_\_\_\_  
WATER SERVICE TYPE: \_\_\_\_\_  
MANUFACTURER: \_\_\_\_\_  
FIRE HYDRANT TYPE: \_\_\_\_\_  
MANUFACTURER: \_\_\_\_\_  
INSPECTOR: \_\_\_\_\_  
CONSTRUCTION MANAGER: \_\_\_\_\_  
RECORD PLANS BY: \_\_\_\_\_  
ADDITIONAL INFO: \_\_\_\_\_  
\_\_\_\_\_  
\_\_\_\_\_  
\_\_\_\_\_  
\_\_\_\_\_  
\_\_\_\_\_

## INDEX TO SHEETS

Sheet No.	Title
1	COVER SHEET
2	LEGEND, ABBREVIATIONS & CONTROL
3	CLEVELAND AVE PLAN & PROFILE STA 0+00 TO STA 3+75
4	CLEVELAND AVE PLAN & PROFILE STA 3+75 TO STA 8+00
5	7TH ST PLAN & PROFILE STA 0+00 TO STA 4+50
6	7TH ST PLAN & PROFILE STA 4+50 TO STA 6+50
7	B ST PLAN & PROFILE STA -0+82 TO STA 3+00
8	B ST PLAN & PROFILE STA 3+00 TO STA 6+75
9	A ST PLAN & PROFILE
10	8TH ST PLAN & PROFILE STA 0+00 TO STA 3+00
11	8TH ST PLAN & PROFILE STA 3+00 TO STA 5+75
12	CONSTRUCTION DETAILS



Know what's **below**.  
Call before you dig.

**BEFORE EXCAVATING  
CALL U.S.A.  
UNDERGROUND SERVICE ALERT  
811  
TWO WORKING DAYS BEFORE ALL  
PLANNED WORK OPERATIONS**

CITY OF CLEVELAND  
**CLEVELAND AVENUE &  
 ST. ROSE DISTRICT  
 SEWER & WATER IMPROVEMENTS**  
**COVER SHEET**

No.	Date	Revision	By	Dept.	Signature	Date
					<i>Michael...</i>	3/26/13
				TPW Field Svc's	<i>James...</i>	3/26/13
				Utilities Op's	<i>...</i>	3/26/13
				Traffic	<i>...</i>	3/26/13
				Materials Lab	<i>...</i>	3/26/13

CONTRACT NO.  
C02041

SHEET 1 OF 12

FILE NO. 2018-0003

DESCRIPTION	EXISTING	NEW
WATER MAIN, PERMANENT BLOWOFF, TEE, GATE VALVE, CROSS AND BEND		
FIRE HYDRANT & SERVICE ASSEMBLY		
SINGLE WATER SERVICE (SEE PLANS FOR SIZE)		
WATER MAIN, GATE VALVE, CROSS, & ELBOW		
36" SONOMA COUNTY AQUEDUCT		
SEWER MAIN, MANHOLE & CLEAN OUT		
SEWER LATERAL & CLEANOUT		
BACKWATER VALVE & CLEANOUT		
CAPPED SEWER LATERAL		
STORM DRAIN, MANHOLE & CATCH BASIN		
GAS MAIN & GAS SERVICE & GAS VALVE		
ELECTRICAL MH / TELEPHONE MH		
ELECTRICAL		
PACIFIC BELL TELEPHONE PULL BOX / VAULT		
STREET LIGHT/ELECTRICAL CONDUIT & BOXES		
TRAFFIC SIGNAL PULL BOX		
STREET LIGHT & TRAFFIC SIGNAL		
JOINT POLE AND GUY ANCHOR		
OVERHEAD UTILITIES		
SURVEY CONTROL POINT & SURVEY MONUMENT		
STREET SIGN & STREET ADDRESS		
FENCE & PARKING METER		
ABANDONED/REMOVE EXISTING UTILITY		
CAP EXISTING UTILITY		
RECONSTRUCTED ROADWAY SURFACE		
EDGE GRIND AND OVERLAY		

AC	ASPHALT CONCRETE
ACP	ASBESTOS CEMENT PIPE
APN	ASSESSORS PARCEL NUMBER
ARV	AIR RELIEF VALVE
BC	BEGIN CURVE
BD	BRASS DISK
BFP	BACK FLOW PREVENTER
BRC	BEGIN REVERSE CURVE
BS	BACK OF SIDEWALK
BVC	BEGIN VERTICAL CURVE
CB	CATCH BASIN
CG	CURB & GUTTER
CI	CAST IRON
CL	CENTERLINE
CMP	CORRUGATED METAL PIPE
CO	CLEANOUT
C	CONCRETE
CR	CURB RETURN
DET	DETECTOR
DI	DROP INLET
DW	DRIVEWAY
EC	END CURVE
EFC	EAST FACE OF CURB
EG	EXISTING GROUND
ELEV	ELEVATIONS
EP	EDGE OF PAVEMENT
EXC	END VERTICAL CURVE
EX, (E)	EXISTING
FBG	FEET BELOW GRADE
FC	FACE OF CURB
FG	FINISHED GRADE
FL	FLOW LINE
FLG	FLOW LINE OF GUTTER
FSW	FRONT OF SIDEWALK
GAS	GAS PIPE
GB	GRADE BREAK
HP	HIGH PRESSURE
IC	INTERCONNECT
IG	INVERT GRADE
INV	BOTTOM INSIDE OF PIPE
LF	LINEAR FEET
LG	LIP OF GUTTER
LT	LEFT
NTS	NOT TO SCALE
PED	PEDESTRIAN
PVI	POINT OF VERTICAL INTERSECTION
PRV	PRESSURE REDUCING VALVE
RCP	REINFORCED CONCRETE PIPE
RPT	REINFORCED PIPE TRUSS
RT	RIGHT
SD	STORM DRAIN
SDMH	STORM DRAIN MANHOLE
SS	SANITARY SEWER
SSMH	SANITARY SEWER MANHOLE
SSCO	SANITARY SEWER CLEANOUT
STL	STEEL PIPE
STD	STANDARD
TB	TOP OF BOX
TC	TOP OF CURB
TEL	TELEPHONE
TOP	TOP OF PIPE
TP	TRANSMISSION PRESSURE
TS	TRAFFIC SIGNAL
TYP	TYPICAL
UG	UNDERGROUND
VCP	VITRIFIED CLAY PIPE
VLT	Vault
WM	WATER MAIN
WS	WATER SERVICE
WSP	WELDED STEEL PIPE
WTR, W	WATER

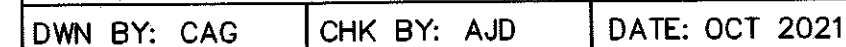
The map shows a street grid with the following streets labeled: FRANCES STREET, BRIGGS AVENUE, CENTRAL AVENUE, CLEVELAND AVENUE, COLLEGE AVENUE, RIDGWAY AVENUE, and HIGHWAY 101. A proposed rail line is shown running vertically through the center of the map. Key points are marked with triangles and numbers: 12, 13, 14, 15, and 621. A north arrow is located in the bottom left corner, pointing upwards. The map also shows various building footprints and lot boundaries.

The map shows a street grid with Highway 101 running vertically on the left. Mendocino Avenue runs diagonally from the top right to the bottom right. Other streets include 10th Street, 8th Street, 7th Street, A Street, and B Street. Several locations are marked with triangles and numbers: 3173, 15, 2078, 20, 21, 1487, 6, C-329, C-330, 8, 9, 10, 11, and 12. A north arrow and the text 'NTS' (Not To Scale) are located in the bottom left corner.

NORTH 83°34'43" EAST BETWEEN CITY OF SANTA ROSA HORIZONTAL CONTROL  
NETWORK COORDINATE MONUMENT G-34 & G-1005. NAD 83- ZONE 2- EPOCH 2010

NORTH 83°34'43" EAST BETWEEN CITY OF SANTA ROSA HORIZONTAL CONTROL  
NETWORK COORDINATE MONUMENT G-34 & G-1005. NAD 83- ZONE 2- EPOCH 2010

NORTH 83°34'43" EAST BETWEEN CITY OF SANTA ROSA HORIZONTAL CONTROL  
NETWORK COORDINATE MONUMENT G-34 & G-1005. NAD 83- ZONE 2- EPOCH 2010



**CITY OF SANTA ROSA  
CLEVELAND AVENUE &  
ST. ROSE DISTRICT  
SEWER & WATER IMPROVEMENTS  
LEGEND, ABBREVIATIONS  
& CONTROL**

CONTRACT NO.	C02041
SHEET	2 OF 12
FILE NO.	2018-0003



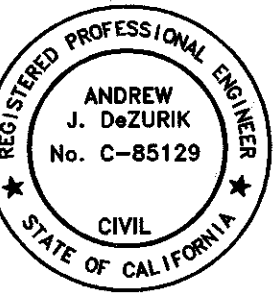






02/28/2022  
ANDREW J. DeZURIK  
C-85129

DWN BY: CAG CHK BY: AJD DATE: OCT 2021



City of  
Santa Rosa

No.	Date	Revision	By

DATE: OCT 2021

CHK BY: AJD

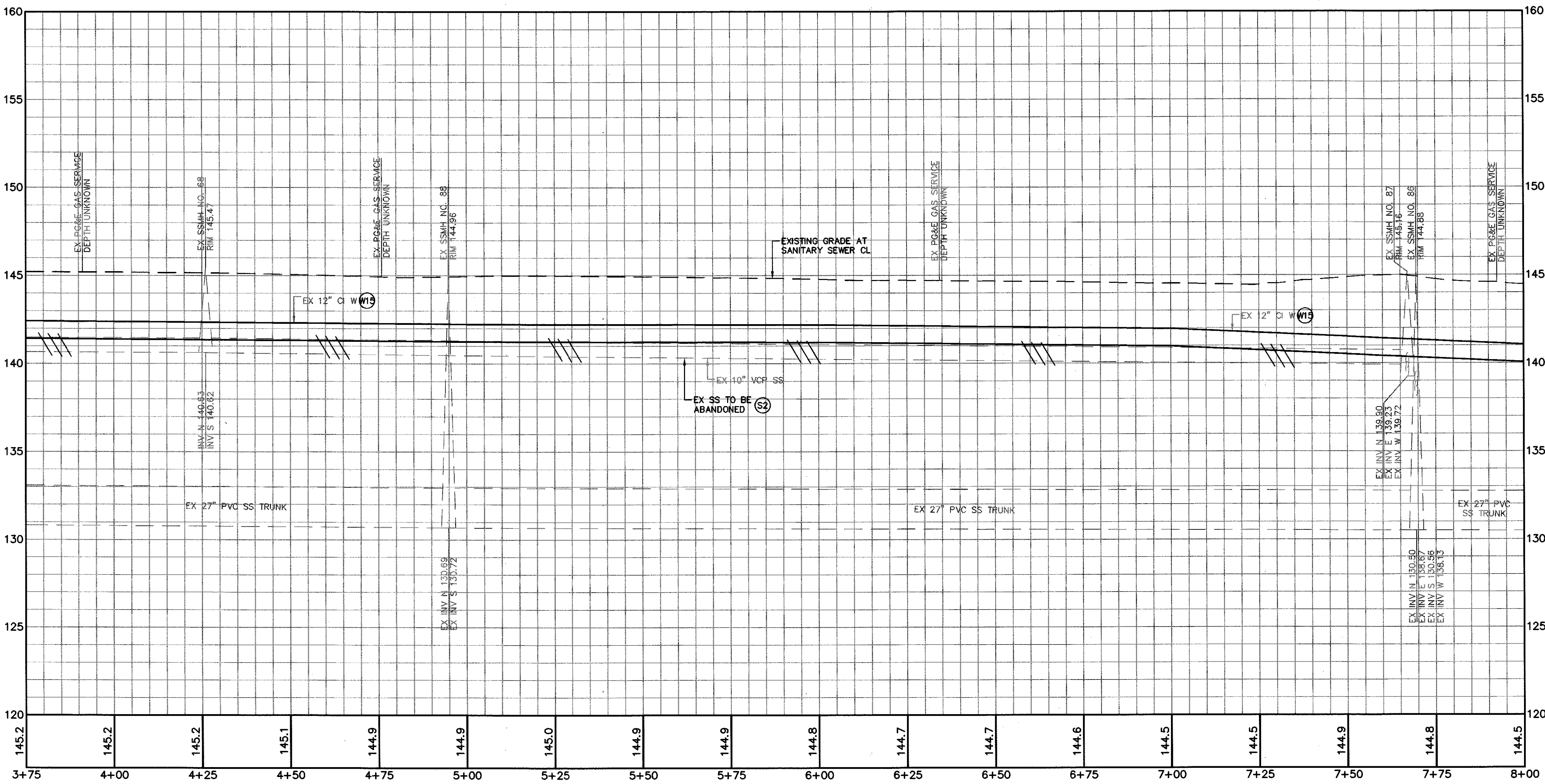
SCALE: As Shown

DWN BY: CAG

CITY OF SANTA ROSA  
CLEVELAND AVENUE &  
ST. ROSE DISTRICT  
SEWER & WATER IMPROVEMENTS  
CLEVELAND AVE PLAN & PROFILE  
STA 3+75 TO STA 8+00

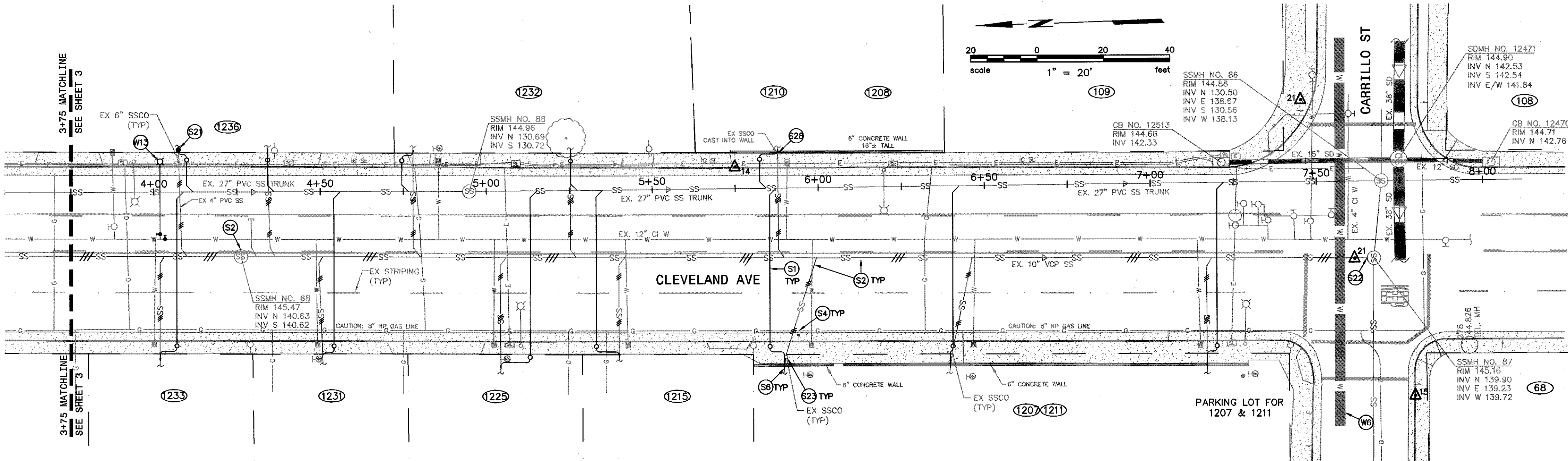
CONTRACT NO.  
C02041  
SHEET 4 OF 12  
FILE NO. 2018-0003

THE LOCATIONS OF EXISTING UTILITIES SHOWN ON THE PLANS ARE APPROXIMATE ONLY. THE CONTRACTOR SHALL POTHOLE AND DETERMINE THE EXACT HORIZONTAL AND VERTICAL LOCATION OF ALL EXISTING UTILITIES FIVE WORKING DAYS PRIOR TO THE START OF TRENCHING AND SHALL ADJUST THE DEPTH OF THE NEW UTILITIES TO CLEAR ANY CONFLICTS AS DIRECTED BY THE ENGINEER.



CLEVELAND AVENUE PROFILE

H: 1"=20'  
V: 1"=4'



PLAN

SCALE: 1"=20'

KEYNOTES:

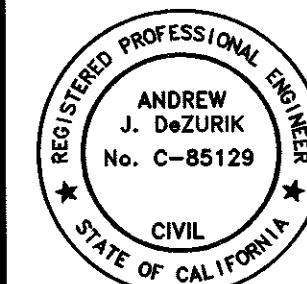
- (S1) INSTALL NEW 4" SANITARY SEWER LATERAL IN ACCORDANCE WITH CITY STANDARD 513-A AND DETAILS 1 & 2, SHEET 12 OF THESE DRAWINGS. ALL NEW LATERALS SHALL HAVE A MINIMUM CLEARANCE OF 5-FEET FROM DOMESTIC WATER LATERALS. PERFORM ALL TRENCHING AND SURFACE RESTORATION IN ACCORDANCE WITH CITY STANDARD 215.(12 ON THIS SHEET)
- (S2) ABANDON OR REMOVE EXISTING SEWER COMPONENTS IN ACCORDANCE WITH SECTION 130-1.05A OF THE CITY STANDARD SPECIFICATIONS.
- (S4) CONTRACTOR SHALL POTHOLE EXISTING HIGH PRESSURE GAS MAIN AT PROPOSED CROSSING TO VERIFY LOCATION PRIOR TO CONSTRUCTION. ATTENTION IS DIRECTED TO SECTION 15-7 OF THE SPECIAL PROVISIONS.
- (S6) CONTRACTOR SHALL POTHOLE EXISTING LATERAL BEHIND SIDEWALK TO VERIFY LOCATION BEFORE INSTALLING NEW TAP TITE FITTING AT SEWER TRUNK. EXISTING TAPS AT IMPROPER LOCATIONS SHALL BE PROPERLY ABANDONED BY INSTALLATION OF STAINLESS STEEL FULL CIRCLE LEAK CLAMP.
- (S2) REMOVE EXISTING 6" BACKWATER VALVE. INSTALL NEW 6" BACKWATER VALVE IN ACCORDANCE WITH CITY STANDARD 527 AND THE CALIFORNIA BUILDING CODE. RIGHT OF ENTRY REQUIRED.
- (S2) ABANDON 10" PIPE INSIDE MANHOLE IN ACCORDANCE WITH SECTION 130-1.05B OF THE PROJECT SPECIAL PROVISIONS.
- (S2) REMOVE ALL VISIBLE EXISTING CLEANOUTS WITHIN 3' OF BACK OF SIDEWALK OR PUE.
- (S2) REMOVE EXISTING WALL AS REQUIRED TO ALLOW FOR REMOVAL OF THE EXISTING SANITARY SEWER CLEAN OUT. REPLACE WALL IN KIND ONCE THE PROPOSED IMPROVEMENTS HAVE BEEN COMPLETED.
- (W6) 36" SONOMA COUNTY AQUEDUCT. APPROXIMATE LOCATION PROVIDED BY CITY. VERIFY IN FIELD.
- (W13) CUT IN AND INSTALL FIRE HYDRANT AND LATERAL IN ACCORDANCE WITH CITY STANDARD 857. PERFORM ALL TRENCHING AND SURFACE RESTORATION IN ACCORDANCE WITH CITY STANDARD 215.
- (W13) EXISTING WATER MAIN DEPTH IS TAKEN FROM RECORD INFORMATION. CONTRACTOR TO POTHOLE AND VERIFY ACTUAL DEPTH OF EXISTING WATER MAINS BEFORE INSTALLATION OF NEW UTILITY SERVICE LATERALS.





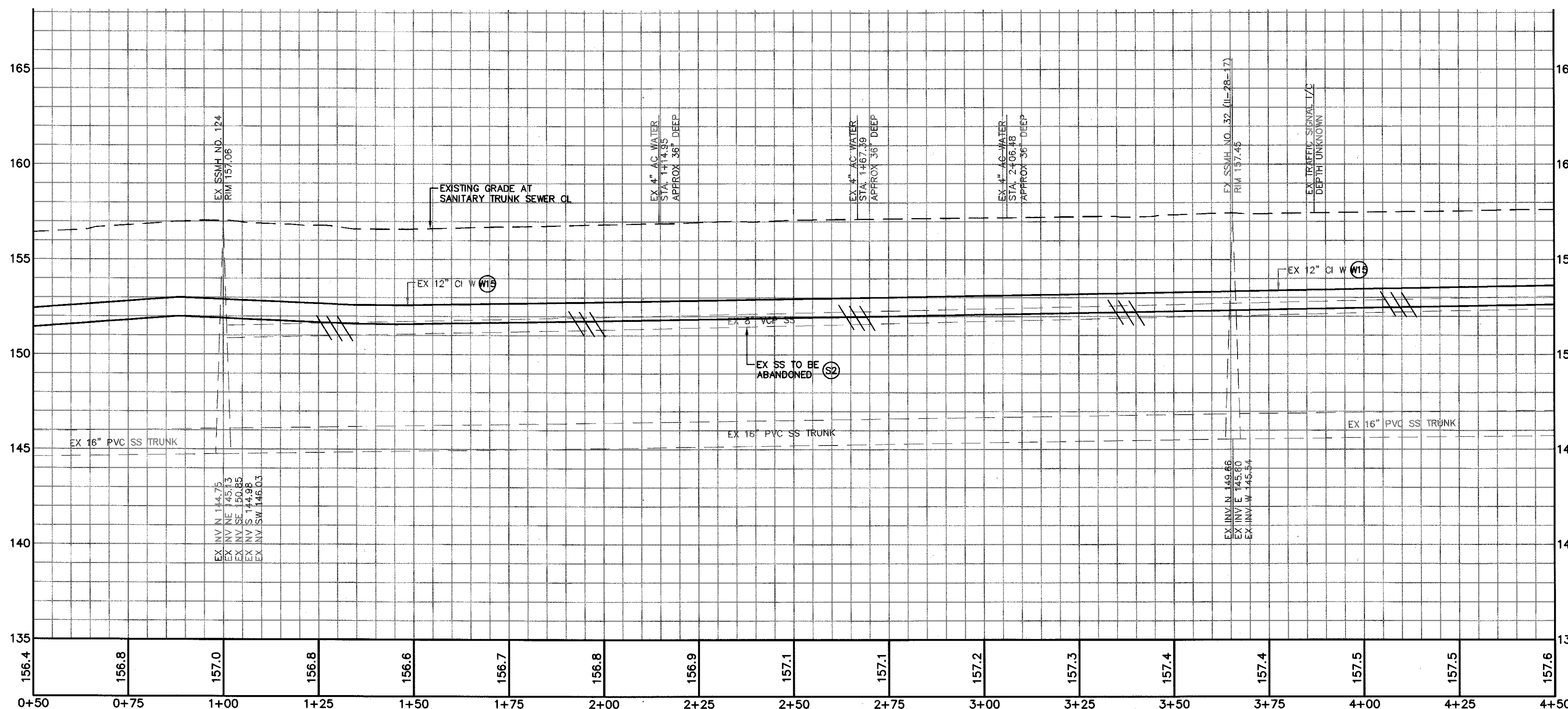
02/28/2022  
ANDREW J. DZURIK  
C-85129

DWN BY: CAG CHK BY: AJD DATE: OCT 2021



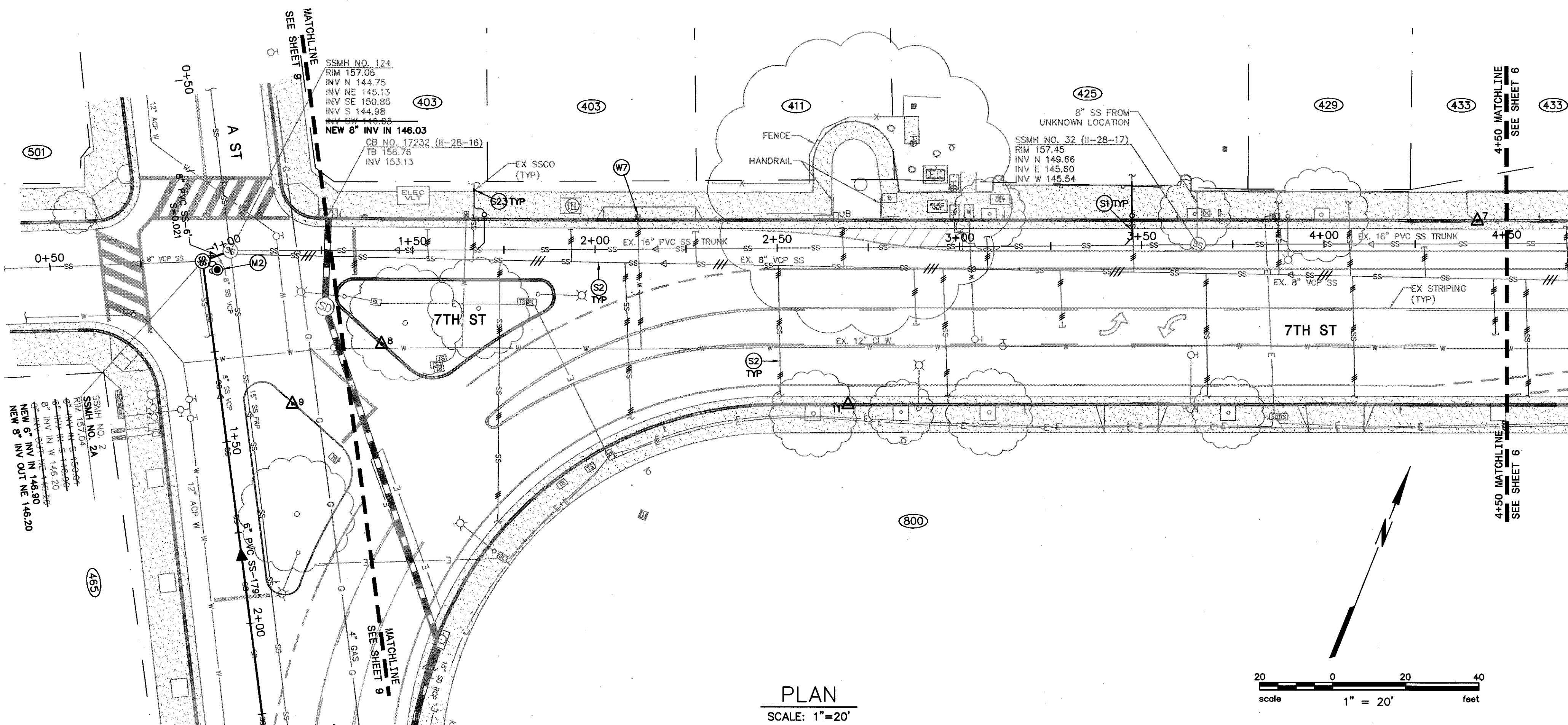
City of  
Santa Rosa

THE LOCATIONS OF EXISTING UTILITIES SHOWN ON THE PLANS ARE APPROXIMATE ONLY. THE CONTRACTOR SHALL POT-HOLE AND DETERMINE THE EXACT HORIZONTAL AND VERTICAL LOCATION OF ALL EXISTING UTILITIES FIVE WORKING DAYS PRIOR TO THE START OF TRENCHING AND SHALL ADJUST THE DEPTH OF THE NEW UTILITIES TO CLEAR ANY CONFLICTS AS DIRECTED BY THE ENGINEER.

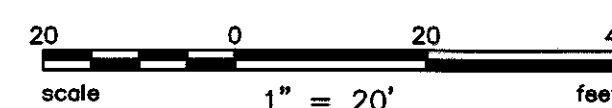


7TH STREET PROFILE

H: 1"=20'  
V: 1"=4'



PLAN  
SCALE: 1"=20'



KEYNOTES:

- (S1) INSTALL NEW 4" SANITARY SEWER LATERAL IN ACCORDANCE WITH CITY STANDARD 513-A AND DETAILS 1 & 2, SHEET 12 OF THESE DRAWINGS. ALL NEW LATERALS SHALL HAVE A MINIMUM CLEARANCE OF 5- FEET FROM DOMESTIC WATER LATERALS. PERFORM ALL TRENCHING AND SURFACE RESTORATION IN ACCORDANCE WITH CITY STANDARD 215.(2 ON THIS SHEET)
- (S2) ABANDON OR REMOVE EXISTING SEWER COMPONENTS IN ACCORDANCE WITH SECTION 130-1.05A OF THE CITY STANDARD SPECIFICATIONS.
- (S23) REMOVE ALL VISIBLE EXISTING CLEANOUTS WITHIN 3' OF BACK OF SIDEWALK OR PUE.
- (W7) ABANDON SERVICE IN ACCORDANCE WITH SECTION 132-1.17 OF THE CITY STANDARD SPECIFICATIONS. REMOVE METER BOX, ANY PLUMBING IN BOX AND FILL AND RESURFACE TO MATCH THE SURROUNDING AREA.
- (W13) EXISTING WATER MAIN DEPTH IS TAKEN FROM RECORD INFORMATION. CONTRACTOR TO POT-HOLE AND VERIFY ACTUAL DEPTH OF EXISTING WATER MAINS BEFORE INSTALLATION OF NEW UTILITY SERVICE LATERALS.
- (M2) REPLACE EXISTING CITY MONUMENT IN ACCORDANCE WITH CITY STANDARD 280 IF DAMAGED. NOTIFY CITY SURVEY DEPARTMENT 10 DAYS PRIOR TO CONSTRUCTION FOR CORNER RECORD SURVEY.

CITY OF SANTA ROSA  
CLEVELAND AVENUE &  
ST. ROSE DISTRICT  
SEWER & WATER IMPROVEMENTS  
7TH ST PLAN & PROFILE  
STA 0+00 TO STA 4+50

CONTRACT NO.  
C02041

SHEET 5 OF 12

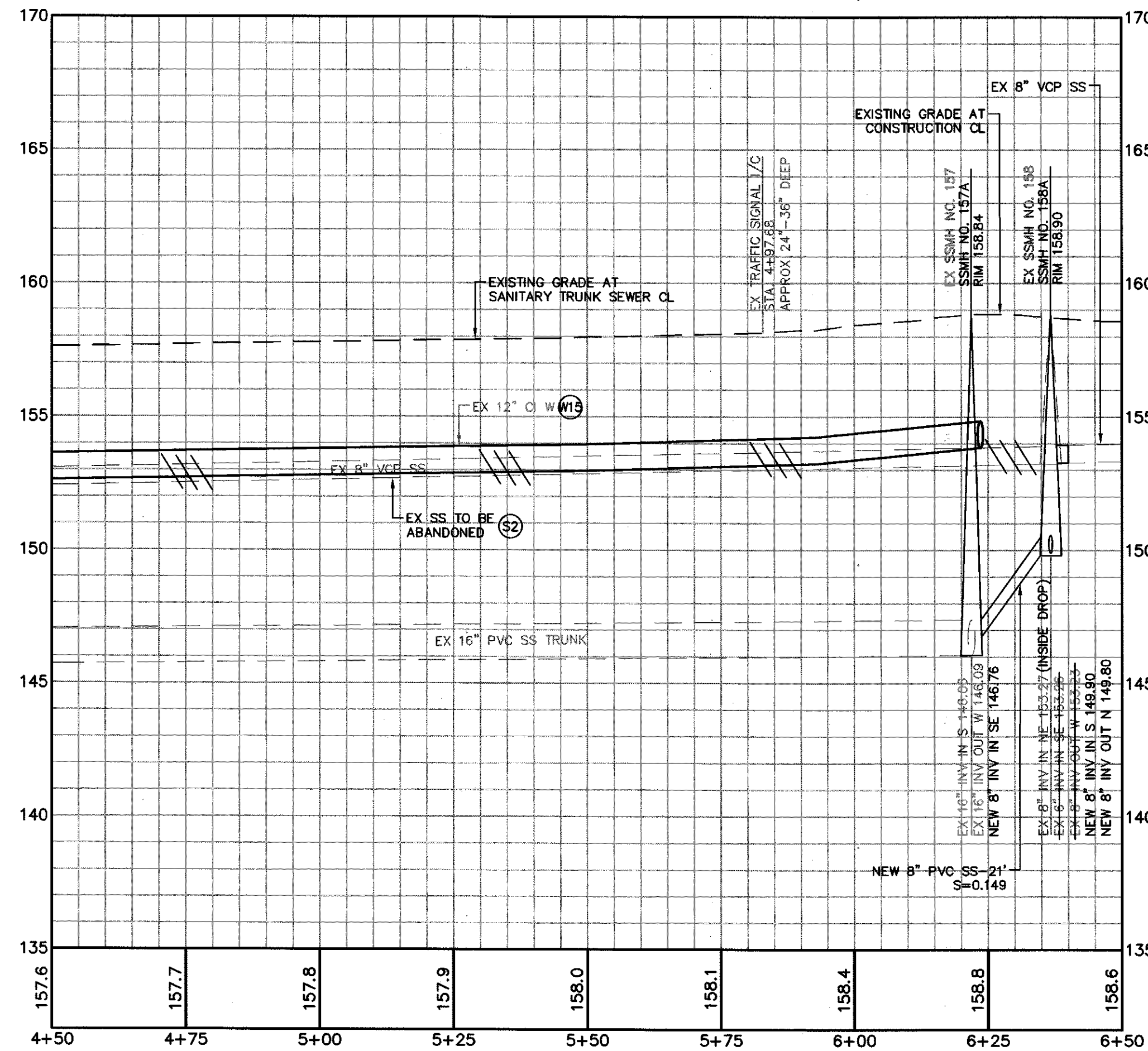
FILE NO. 2018-0003

No.	Date	Revision	By

SCALE: As Shown  
DWN BY: CAG  
DATE: OCT 2021  
CHK BY: AJD

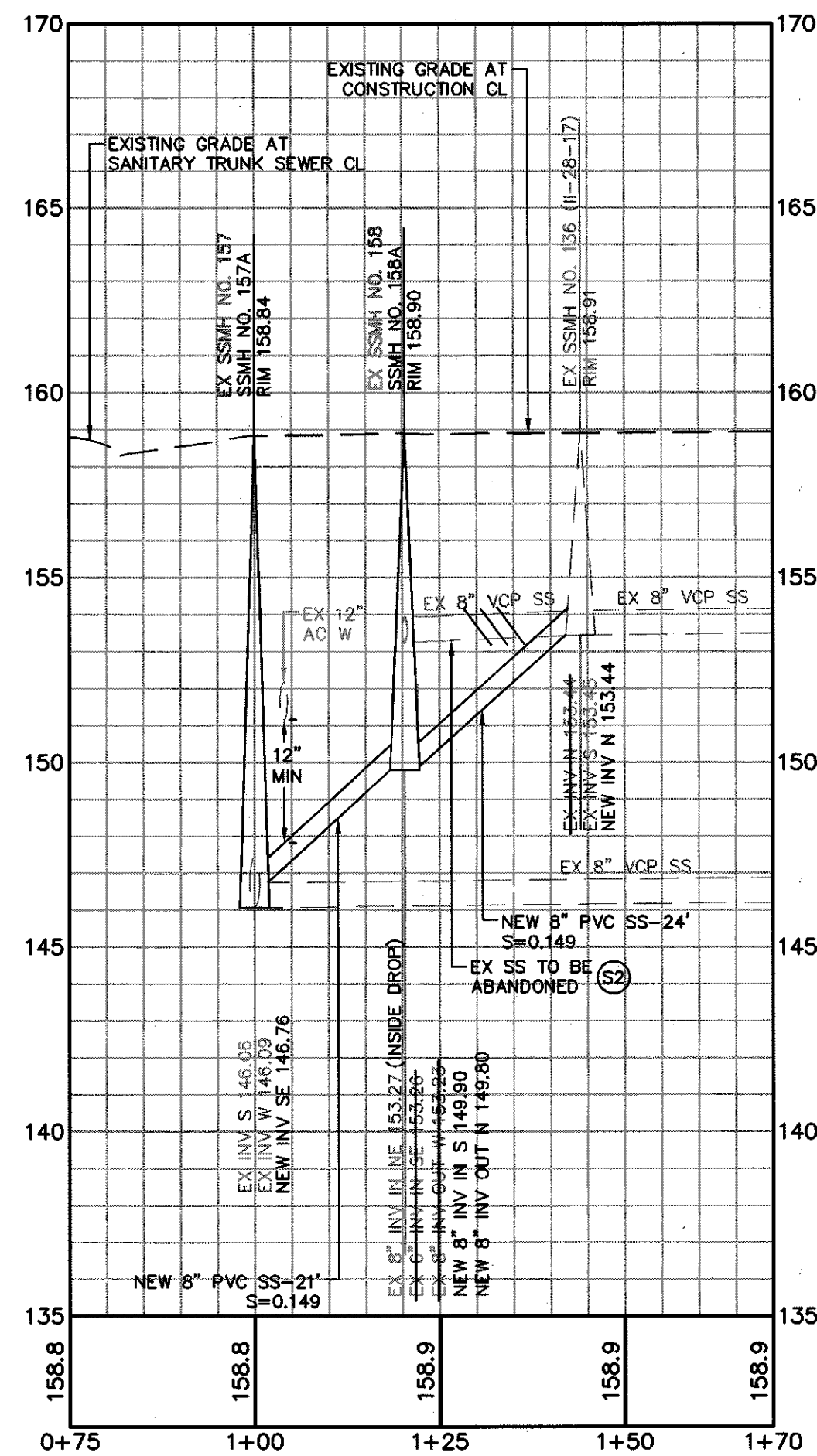


THE LOCATIONS OF EXISTING UTILITIES SHOWN ON THE PLANS ARE APPROXIMATE ONLY. THE CONTRACTOR SHALL POTHOLE AND DETERMINE THE EXACT HORIZONTAL AND VERTICAL LOCATION OF ALL EXISTING UTILITIES FIVE WORKING DAYS PRIOR TO THE START OF TRENCHING AND SHALL ADJUST THE DEPTH OF THE NEW UTILITIES TO CLEAR ANY CONFLICTS AS DIRECTED BY THE ENGINEER.



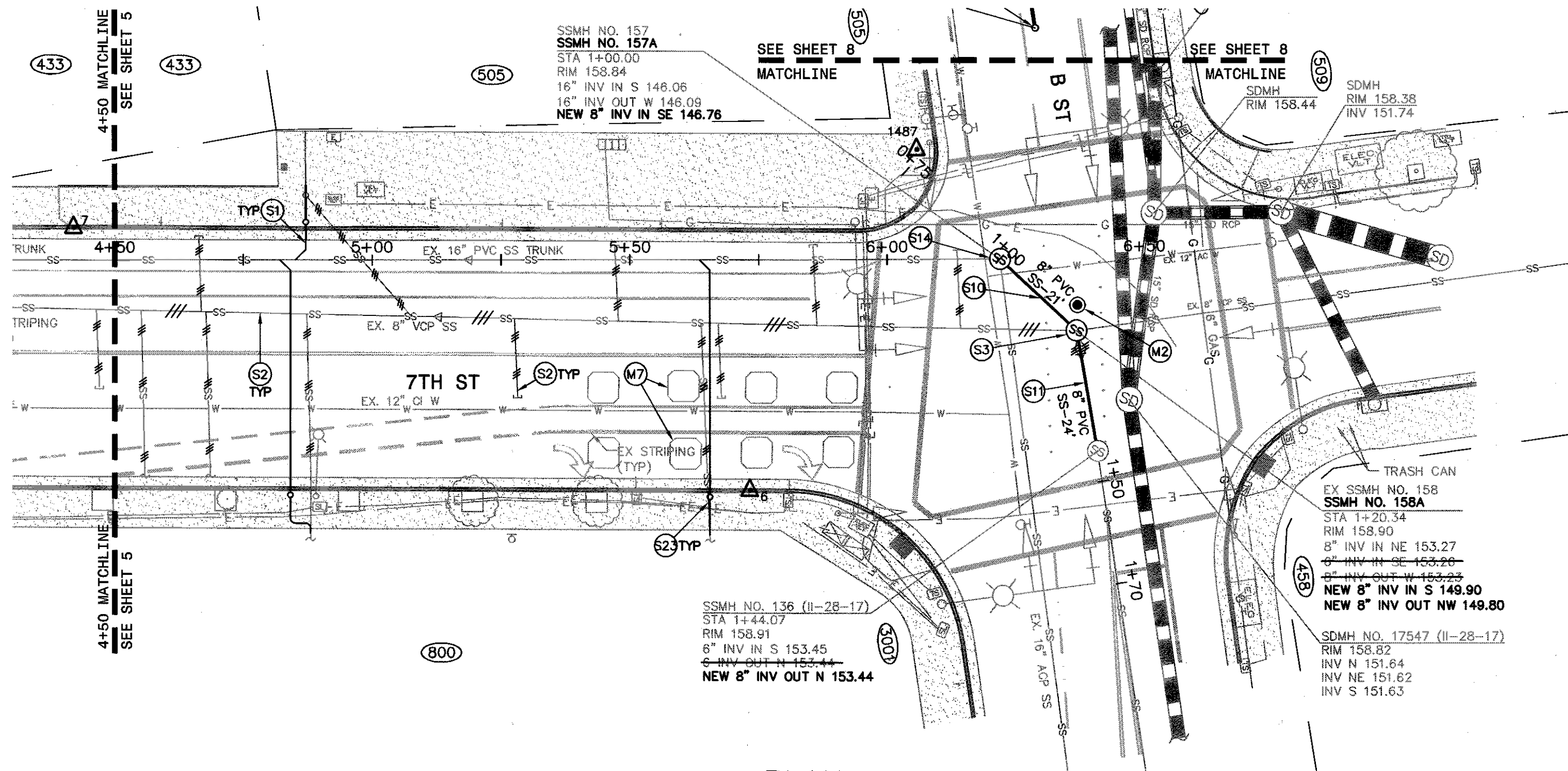
7TH STREET PROFILE

H: 1"=20'  
V: 1"=4'



B STREET @ 7TH STREET PROFILE

H: 1"=20'  
V: 1"=4'



PLAN

SCALE: 1"=20'

**KEYNOTES:**

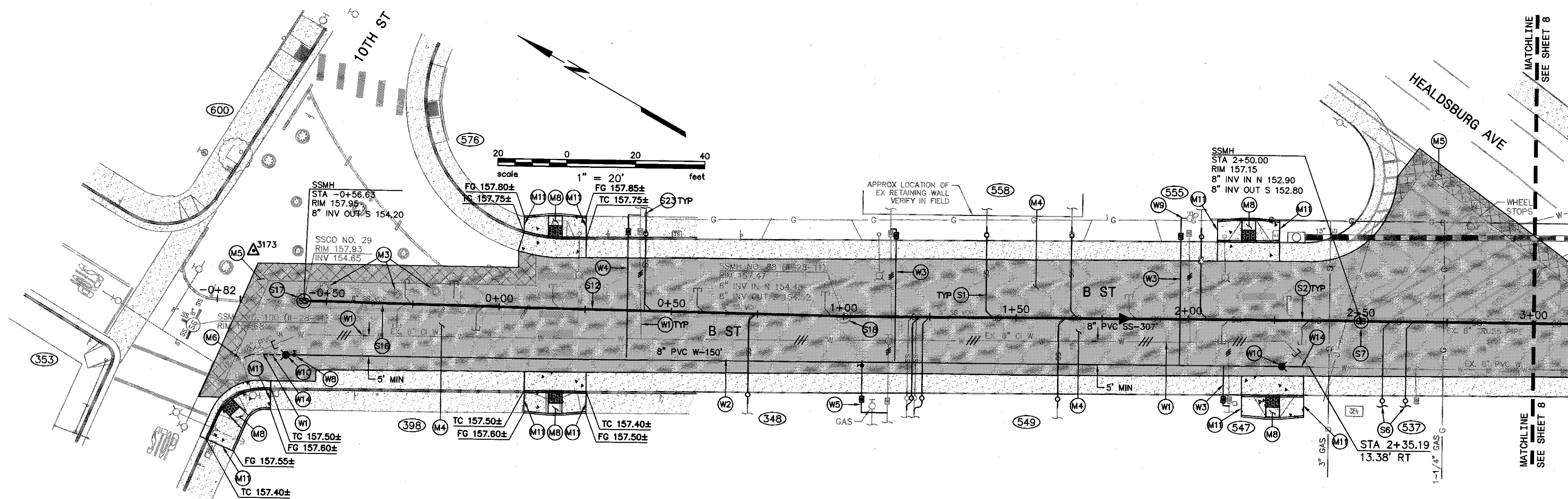
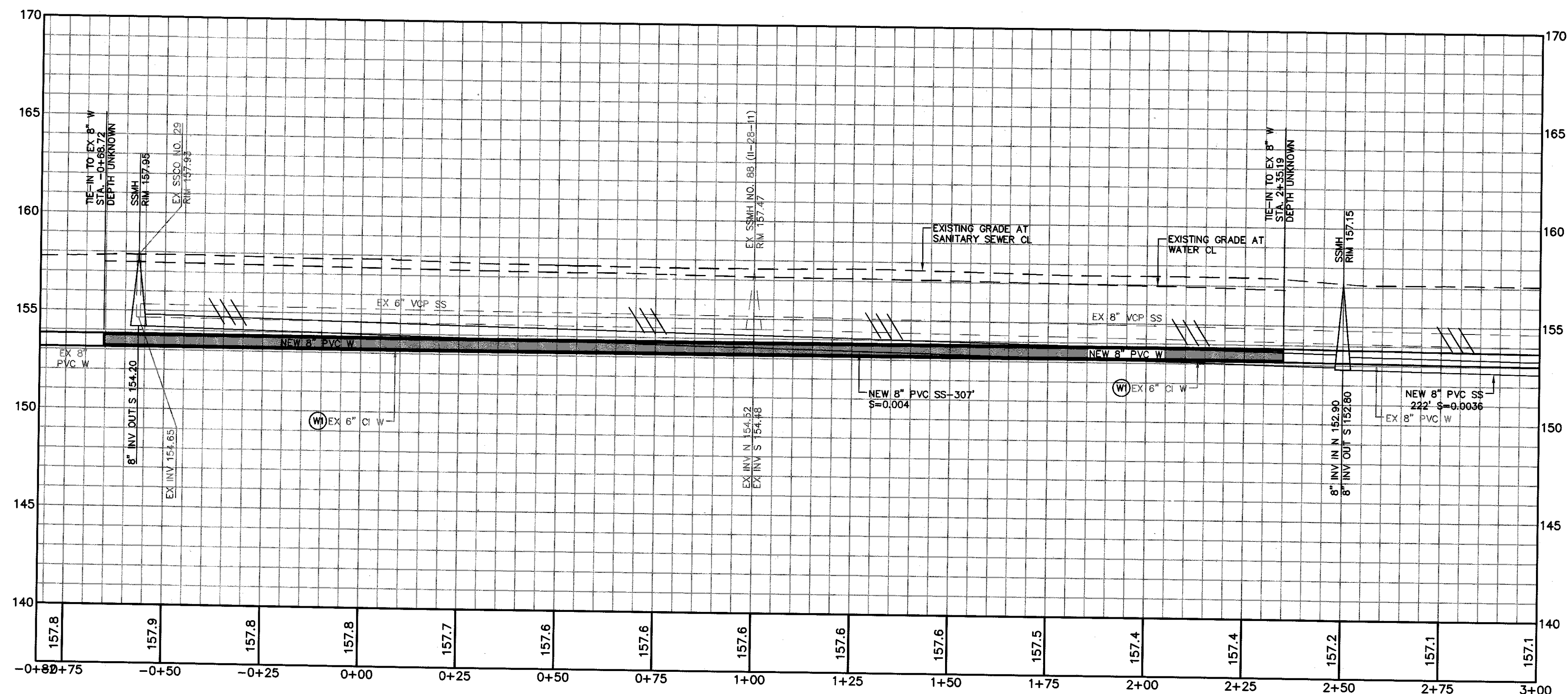
- (S1) INSTALL NEW 4" SANITARY SEWER LATERAL IN ACCORDANCE WITH CITY STANDARD 513-A AND DETAILS 1 & 2, SHEET 12 OF THESE DRAWINGS. ALL NEW LATERALS SHALL HAVE A MINIMUM CLEARANCE OF 5-FEET FROM DOMESTIC WATER LATERALS. PERFORM ALL TRENCHING AND SURFACE RESTORATION IN ACCORDANCE WITH CITY STANDARD 215. (3 ON THIS SHEET)
- (S2) ABANDON OR REMOVE EXISTING SEWER COMPONENTS IN ACCORDANCE WITH SECTION 130-1.05A OF THE CITY STANDARD SPECIFICATIONS.
- (S3) REMOVE EXISTING 48" SANITARY SEWER MANHOLE AND INSTALL NEW 60" MANHOLE WITH INSIDE DROP IN ACCORDANCE WITH CITY STANDARDS 500 & 503.
- (S10) INSTALL NEW 8" SANITARY SEWER MAIN IN ACCORDANCE WITH CITY STANDARDS. PERFORM ALL TRENCHING AND SURFACE RESTORATION IN ACCORDANCE WITH CITY STANDARD 215.
- (S11) REMOVE AND REPLACE SANITARY SEWER MAIN IN ACCORDANCE WITH CITY STANDARDS. PERFORM ALL TRENCHING AND SURFACE RESTORATION IN ACCORDANCE WITH CITY STANDARD 215.
- (S14) REMOVE AND REPLACE 48" SANITARY SEWER MANHOLE IN ACCORDANCE WITH CITY STANDARD 500.
- (S21) REMOVE ALL VISIBLE EXISTING CLEANOUTS WITHIN 3' OF BACK OF SIDEWALK OR PUE.
- (W13) EXISTING WATER MAIN DEPTH IS TAKEN FROM RECORD INFORMATION. CONTRACTOR TO POTHOLE AND VERIFY ACTUAL DEPTH OF EXISTING WATER MAINS BEFORE INSTALLATION OF NEW UTILITY SERVICE LATERALS.
- (M2) REPLACE EXISTING CITY MONUMENT IN ACCORDANCE WITH CITY STANDARD 280 IF DAMAGED. NOTIFY CITY SURVEY DEPARTMENT 10 DAYS PRIOR TO CONSTRUCTION FOR CORNER RECORD SURVEY.
- (M7) REPAIR ANY TRAFFIC LOOPS DAMAGED DURING CONSTRUCTION.



CITY OF SANTA ROSA  
CLEVELAND AVENUE &  
ST. ROSE DISTRICT  
SEWER & WATER IMPROVEMENTS  
7TH ST PLAN & PROFILE  
STA 4+50 TO STA 6+50

CONTRACT NO.  
C02041  
SHEET 6 OF 12  
FILE NO. 2018-0003





**BKI**  
ENGINEERS / SURVEYORS / PLANNERS  
200 4TH ST, STE. 300 SANTA ROSA, CA 95401  
(707) 563-8400 FAX: (707) 563-8400

02/28/2022  
ANDREW I. DUBIRIK C-8512

DWN BY: CAG	CHK BY: AJD	DATE: OCT 2021
-------------	-------------	----------------

THE LOCATIONS OF EXISTING UTILITIES SHOWN ON THE PLANS ARE APPROXIMATE ONLY. THE CONTRACTOR SHALL POTHOLE AND DETERMINE THE EXACT HORIZONTAL AND VERTICAL LOCATION OF ALL EXISTING UTILITIES FIVE WORKING DAYS PRIOR TO THE START OF TRENCHING AND SHALL ADJUST THE DEPTH OF THE NEW UTILITIES TO CLEAR ANY CONFLICTS AS DIRECTED BY THE ENGINEER.



City of  
Santa Rosa

**KEYNOTES:**

- (S1) INSTALL NEW 4" SANITARY SEWER LATERAL IN ACCORDANCE WITH CITY STANDARD 513-A AND DETAILS 1 & 2. SHEET 12 OF THESE DRAWINGS. ALL NEW LATERALS SHALL HAVE A MINIMUM CLEARANCE OF 5- FEET FROM DOMESTIC WATER LATERALS. PERFORM ALL TRENCHING AND SURFACE RESTORATION IN ACCORDANCE WITH CITY STANDARD 215. (10 ON THIS SHEET)
- (S2) ABANDON OR REMOVE EXISTING SEWER COMPONENTS IN ACCORDANCE WITH SECTION 130-1.05A OF THE CITY STANDARD SPECIFICATIONS.
- (S6) CONTRACTOR SHALL POTHOLE EXISTING LATERAL BEHIND SIDEWALK TO VERIFY LOCATION BEFORE INSTALLING NEW TAP TITE FITTING AT SEWER TRUNK. EXISTING TAPS AT IMPROPER LOCATIONS SHALL BE PROPERLY ABANDONED BY INSTALLATION OF STAINLESS STEEL FULL CIRCLE LEAK CLAMP.
- (S7) INSTALL 48" SANITARY SEWER MANHOLE IN ACCORDANCE WITH CITY STANDARD 500.
- (S12) REMOVE EXISTING SANITARY SEWER COMPLETELY AND INSTALL NEW SANITARY SEWER MAIN IN ACCORDANCE WITH CITY STANDARDS. PERFORM ALL TRENCHING AND SURFACE RESTORATION IN ACCORDANCE WITH CITY STANDARD 215.
- (S16) UNKNOWN CONNECTION BASED ON FIELD DATA. CONTRACTOR TO VERIFY LATERAL ALIGNMENT AND REPLACE IN ACCORDANCE WITH KEYNOTE S1.
- (S17) REMOVE EXISTING MAINLINE CLEANOUT AND INSTALL NEW 48" MANHOLE IN ACCORDANCE WITH CITY STANDARD 500.
- (S18) REMOVE EXISTING SANITARY SEWER MANHOLE.
- (S23) REMOVE ALL VISIBLE EXISTING CLEANOUTS WITHIN 3' OF BACK OF SIDEWALK OR PUE.
- (W1) REMOVE OR ABANDON EXISTING WATER SYSTEM COMPONENTS IN ACCORDANCE WITH SECTION 132-1.17 OF THE CITY STANDARD SPECIFICATIONS.
- (W2) FURNISH AND INSTALL NEW 8" PVC WATER MAIN. PERFORM ALL TRENCHING AND SURFACE RESTORATION IN ACCORDANCE WITH CITY OF STANDARD 215.
- (W3) INSTALL NEW 1" HDPE WATER SERVICE PLUMBED FOR 5/8"x3/4" WATER METER IN ACCORDANCE WITH CITY STANDARD 863A.
- (W4) INSTALL NEW 1" HDPE WATER SERVICE PLUMBED FOR 1" WATER METER IN ACCORDANCE WITH CITY STANDARD 863A.
- (W6) INSTALL 2" WATER SERVICE PLUMBED FOR 2" METER IN ACCORDANCE WITH CITY STANDARD 865A.
- (W6) NEW 8-INCH GATE VALVE.
- (W9) CONNECT TO AND RECERTIFY BACKFLOW DEVICE.
- (W10) TEMPORARY BLOWOFF IN ACCORDANCE WITH CITY STANDARD 859 OR SECTION 132-1.19 OF THE CITY STANDARD SPECIFICATIONS.
- (W14) AFTER FINAL TESTING OF NEW WATER MAIN, TIE-IN TO EXISTING WATER MAIN UNDER CITY AUTHORIZATION AND INSPECTION.
- (W15) EXISTING WATER MAIN DEPTH IS TAKEN FROM RECORD INFORMATION. CONTRACTOR TO POTHOLE AND VERIFY ACTUAL DEPTH OF EXISTING WATER MAINS BEFORE INSTALLATION OF NEW UTILITY SERVICE LATERALS.
- (M3) REMOVE EXISTING CONCRETE PLANTERS TO FACILITATE THE PROPOSED IMPROVEMENTS. REPLACE IN THE EXISTING LOCATIONS AFTER IMPROVEMENTS ARE COMPLETE.
- (M4) RECONSTRUCT ROADWAY SURFACE IN ACCORDANCE WITH DETAILS 4 & 5, SHEET 12 OF THESE DRAWINGS.
- (M5) EDGE GRIND EXISTING ASPHALT CONCRETE IN ACCORDANCE WITH CITY STANDARD 210. PROVIDE A NEW ASPHALT CONCRETE OVERLAY IN A MANNER WHICH GENERATES A UNIFORM TRANSITION BETWEEN SURFACES AND DOES NOT IMPEDE DRAINAGE.
- (M6) ADJUST EXISTING UTILITY TO FINISHED GRADE AS REQUIRED TO FACILITATE THE PROPOSED IMPROVEMENTS.
- (M8) CASE 'C' PEDESTRIAN RAMP IN ACCORDANCE WITH CALTRANS STANDARD PLAN A88A.
- (M11) CONFORM TO EXISTING SURFACE ELEVATION IN A MANNER WHICH PROVIDES A UNIFORM TRANSITION BETWEEN SURFACES AND DOES NOT IMPEDE DRAINAGE.

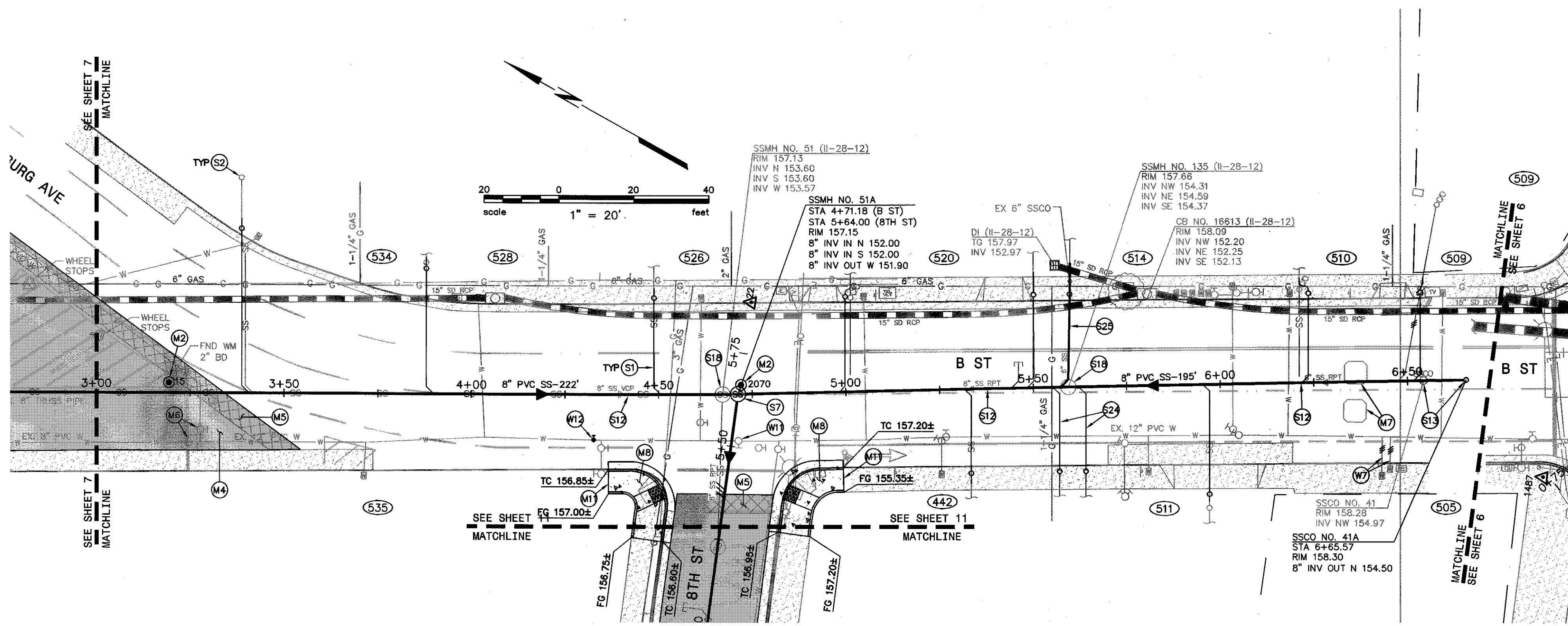
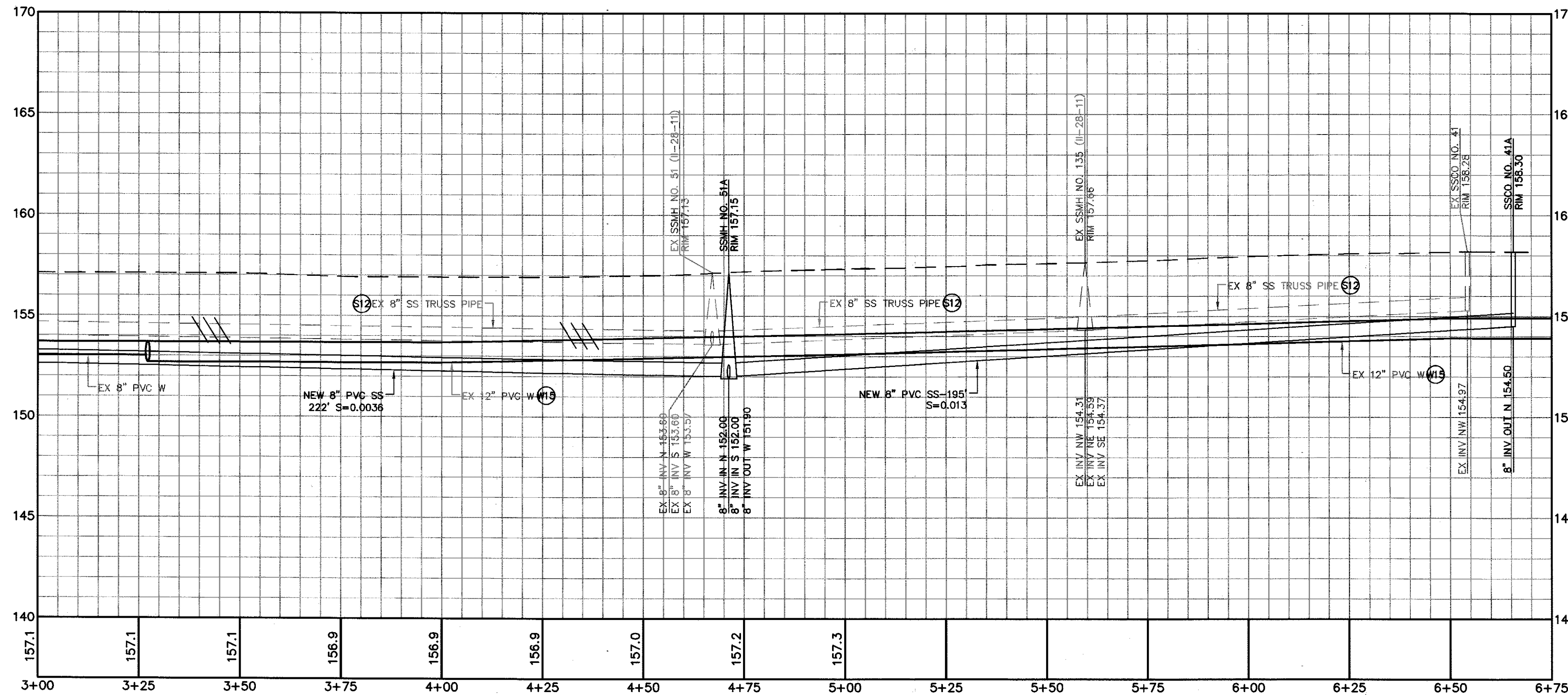
**CITY OF SANTA ROSA  
CLEVELAND AVENUE &  
ST. ROSE DISTRICT  
SEWER & WATER IMPROVEMENTS  
B ST PLAN & PROFILE  
STA -0+82 TO STA 3+00**

CONTRACT NO.  
C02041

SHEET 7 OF 12
FILE NO. 2018-0003



THE LOCATIONS OF EXISTING UTILITIES SHOWN ON THE PLANS ARE APPROXIMATE ONLY. THE CONTRACTOR SHALL POthOLE AND DETERMINE THE EXACT HORIZONTAL AND VERTICAL LOCATION OF ALL EXISTING UTILITIES FIVE WORKING DAYS PRIOR TO THE START OF TRENCHING AND SHALL ADJUST THE DEPTH OF THE NEW UTILITIES TO CLEAR ANY CONFLICTS AS DIRECTED BY THE ENGINEER.



**KEYNOTES:**

- (S1) INSTALL NEW 4" SANITARY SEWER LATERAL IN ACCORDANCE WITH CITY STANDARD 513-A AND DETAILS 1 & 2, SHEET 12 OF THESE DRAWINGS. ALL NEW LATERALS SHALL HAVE A MINIMUM CLEARANCE OF 5-FEET FROM DOMESTIC WATER LATERALS. PERFORM ALL TRENCHING AND SURFACE RESTORATION IN ACCORDANCE WITH CITY STANDARD 215. (9 ON THIS SHEET)
- (S2) ABANDON OR REMOVE EXISTING SEWER COMPONENTS IN ACCORDANCE WITH SECTION 130-1.05A OF THE CITY STANDARD SPECIFICATIONS.
- (S12) REMOVE EXISTING SANITARY SEWER COMPLETELY AND INSTALL NEW SANITARY SEWER MAIN IN ACCORDANCE WITH CITY STANDARDS. PERFORM ALL TRENCHING AND SURFACE RESTORATION IN ACCORDANCE WITH CITY STANDARD 215.
- (S13) REMOVE EXISTING SANITARY SEWER CLEANOUT COMPLETELY AND INSTALL NEW SANITARY SEWER CLEANOUT IN ACCORDANCE WITH CITY STANDARD 505.
- (S14) REMOVE AND REPLACE 48" SANITARY SEWER MANHOLE IN ACCORDANCE WITH CITY STANDARD 500.
- (S19) REMOVE EXISTING SANITARY SEWER MANHOLE.
- (S24) VERIFY IF EXISTING LATERAL IS LIVE. IF LATERAL IS DETERMINED TO BE LIVE, INSTALL NEW 4" SANITARY SEWER LATERAL IN ACCORDANCE WITH STANDARD 513-A AND DETAIL 1, SHEET 12. ALL NEW LATERALS SHALL HAVE A MINIMUM CLEARANCE OF 5-FEET FROM DOMESTIC WATER LATERALS. PERFORM ALL TRENCHING AND SURFACE RESTORATION IN ACCORDANCE WITH CITY OF SANTA ROSA STANDARD 215.
- (S29) REMOVE AND REPLACE EXISTING 6-INCH SANITARY SEWER LATERAL AND CLEAN OUT IN ACCORDANCE WITH CITY STANDARD 513-A. PERFORM ALL TRENCHING AND SURFACE RESTORATION IN ACCORDANCE WITH CITY OF SANTA ROSA STANDARD 215.
- (W1) REMOVE OR ABANDON EXISTING WATER SYSTEM COMPONENTS IN ACCORDANCE WITH SECTION 132-1.17 OF THE CITY STANDARD SPECIFICATIONS.
- (W7) ABANDON SERVICE IN ACCORDANCE WITH SECTION 132-1.17 OF THE CITY STANDARD SPECIFICATIONS. REMOVE METER BOX, ANY PLUMBING IN BOX AND FILL AND RESURFACE TO MATCH THE SURROUNDING AREA.
- (W11) REMOVE BUTTERFLY VALVE IF IN CONFLICT WITH ADJUSTED SS ALIGNMENT. IF REMOVED, CUT-IN NEW 12" GATE VALVE, SEE KEYNOTE W12.
- (W12) NEW 12-INCH GATE VALVE IF BUTTERFLY VALVE REMOVED PER KEYNOTE W11.
- (W15) EXISTING WATER MAIN DEPTH IS TAKEN FROM RECORD INFORMATION. CONTRACTOR TO POTHOLE AND VERIFY ACTUAL DEPTH OF EXISTING WATER MAINS BEFORE INSTALLATION OF NEW UTILITY SERVICE LATERALS.
- (W12) REPLACE EXISTING CITY MONUMENT IN ACCORDANCE WITH CITY STANDARD 280 IF DAMAGED. NOTIFY CITY SURVEY DEPARTMENT 10 DAYS PRIOR TO CONSTRUCTION FOR CORNER RECORD SURVEY.
- (W4) RECONSTRUCT ROADWAY SURFACE IN ACCORDANCE WITH DETAILS 4 & 5, SHEET 12 OF THESE DRAWINGS.
- (W5) EDGE GRIND EXISTING ASPHALT CONCRETE IN ACCORDANCE WITH CITY STANDARD 210. PROVIDE A NEW ASPHALT CONCRETE OVERLAY IN A MANNER WHICH GENERATES A UNIFORM TRANSITION BETWEEN SURFACES AND DOES NOT IMPEDE DRAINAGE.
- (W6) ADJUST EXISTING UTILITY TO FINISHED GRADE AS REQUIRED TO FACILITATE THE PROPOSED IMPROVEMENTS.
- (W7) REPAIR ANY TRAFFIC LOOPS DAMAGED DURING CONSTRUCTION.
- (W8) CASE 'C' PEDESTRIAN RAMP IN ACCORDANCE WITH CALTRANS STANDARD PLAN A89A.
- (W11) CONFORM TO EXISTING SURFACE ELEVATION IN A MANNER WHICH PROVIDES A UNIFORM TRANSITION BETWEEN SURFACES AND DOES NOT IMPEDE DRAINAGE.

City of  
Santa Rosa

No.	Date	Revision	By

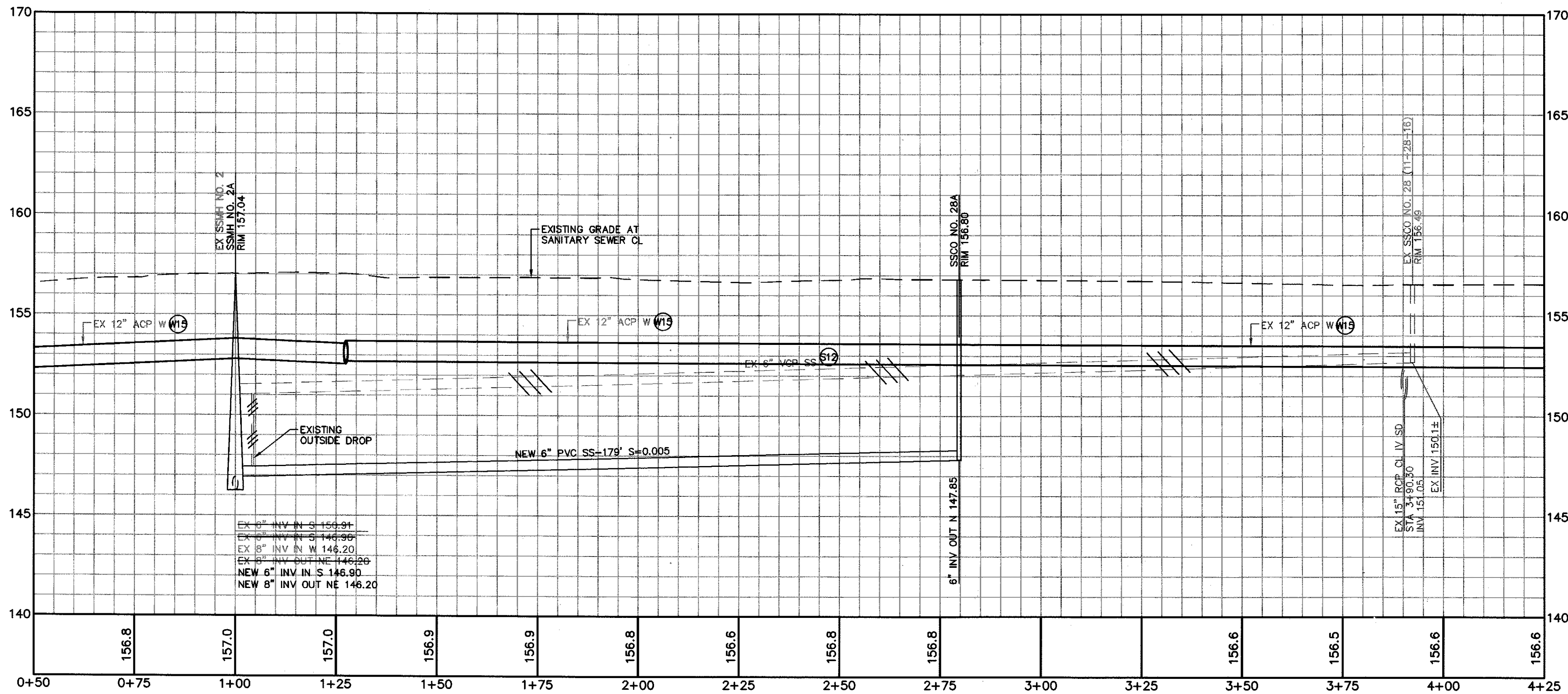
CITY OF SANTA ROSA CLEVELAND AVENUE & ST. ROSE DISTRICT SEWER & WATER IMPROVEMENTS B ST PLAN & PROFILE STA 3+00 TO STA 6+75	SCALE: As Shown DWN BY: CAG	DATE: OCT 2021 CHK BY: AJD	CONTRACT NO. C02041 SHEET 8 OF 12 FILE NO. 2018-0003
--	--------------------------------	-------------------------------	---



THE LOCATIONS OF EXISTING UTILITIES SHOWN ON THE PLANS ARE APPROXIMATE ONLY. THE CONTRACTOR SHALL POTHOLE AND DETERMINE THE EXACT HORIZONTAL AND VERTICAL LOCATION OF ALL EXISTING UTILITIES FIVE WORKING DAYS PRIOR TO THE START OF TRENCHING AND SHALL ADJUST THE DEPTH OF THE NEW UTILITIES TO CLEAR ANY CONFLICTS AS DIRECTED BY THE ENGINEER.

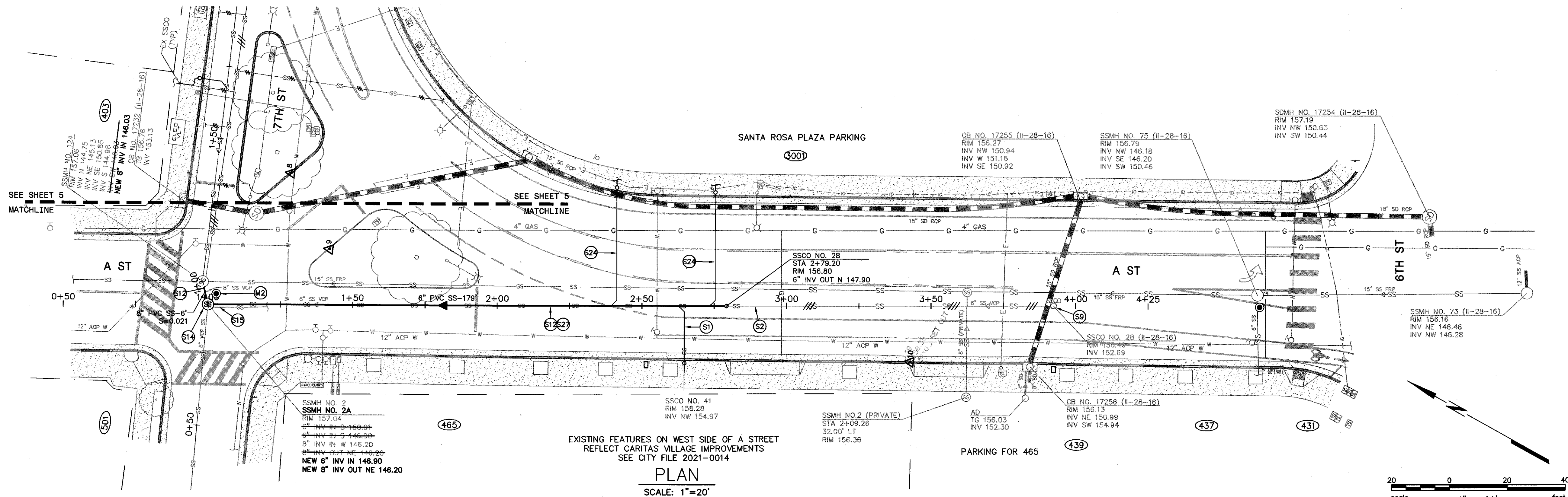
**KEYNOTES:**

- (S1) INSTALL NEW 4" SANITARY SEWER LATERAL IN ACCORDANCE WITH CITY STANDARD 513-A AND DETAILS 1 & 2, SHEET 12 OF THESE DRAWINGS. ALL NEW LATERALS SHALL HAVE A MINIMUM CLEARANCE OF 5- FEET FROM DOMESTIC WATER LATERALS. PERFORM ALL TRENCHING AND SURFACE RESTORATION IN ACCORDANCE WITH CITY STANDARD 215. (1 ON THIS SHEET)
- (S2) ABANDON OR REMOVE EXISTING SEWER COMPONENTS IN ACCORDANCE WITH SECTION 130-1.05A OF THE CITY STANDARD SPECIFICATIONS.
- (S9) REMOVE EXISTING MAINLINE CLEANOUT AND SWEEP.
- (S12) REMOVE EXISTING SANITARY SEWER COMPLETELY AND INSTALL NEW SANITARY SEWER MAIN IN ACCORDANCE WITH CITY STANDARDS. PERFORM ALL TRENCHING AND SURFACE RESTORATION IN ACCORDANCE WITH CITY STANDARD 215.
- (S14) REMOVE AND REPLACE 48" SANITARY SEWER MANHOLE IN ACCORDANCE WITH CITY STANDARD 500.
- (S15) UNKNOWN CONNECTION BASED ON FIELD DIP. VERIFY IN FIELD.
- (S24) VERIFY IF EXISTING LATERAL IS LIVE. IF LATERAL IS DETERMINED TO BE LIVE, INSTALL NEW 4" SANITARY SEWER LATERAL IN ACCORDANCE WITH STANDARD 513-A AND DETAIL 1, SHEET 12. ALL NEW LATERALS SHALL HAVE A MINIMUM CLEARANCE OF 5- FEET FROM DOMESTIC WATER LATERALS. PERFORM ALL TRENCHING AND SURFACE RESTORATION IN ACCORDANCE WITH CITY OF SANTA ROSA STANDARD 215. (2 ON THIS SHEET)
- (S27) 6-INCH SANITARY SEWER MAIN IS ACTIVE AS OF TIME OF THIS DESIGN, BUT SCHEDULED TO BE ABANDONED DURING FUTURE PHASE OF MH2A CONSTRUCTION. COORDINATION MAY BE NEEDED WITH DEVELOPMENT DURING CONSTRUCTION FOR WORK ON MH2A. CONTACT CITY INSPECTOR JAVIER FERNANDEZ AT (707) 696-2138.
- (M15) EXISTING WATER MAIN DEPTH IS TAKEN FROM RECORD INFORMATION. CONTRACTOR TO POTHOLE AND VERIFY ACTUAL DEPTH OF EXISTING WATER MAINS BEFORE INSTALLATION OF NEW UTILITY SERVICE LATERALS.
- (M2) REPLACE EXISTING CITY MONUMENT IN ACCORDANCE WITH CITY STANDARD 280. IF DAMAGED, NOTIFY CITY SURVEY DEPARTMENT 10 DAYS PRIOR TO CONSTRUCTION FOR CORNER RECORD SURVEY.



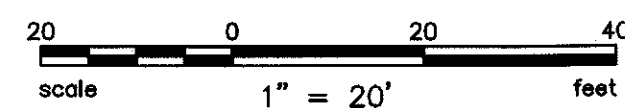
**A STREET PROFILE**

H: 1"=20'  
V: 1"=4'



EXISTING FEATURES ON WEST SIDE OF A STREET  
REFLECT CARTAS VILLAGE IMPROVEMENTS  
SEE CITY FILE 2021-0014

**PLAN**  
SCALE: 1"=20'



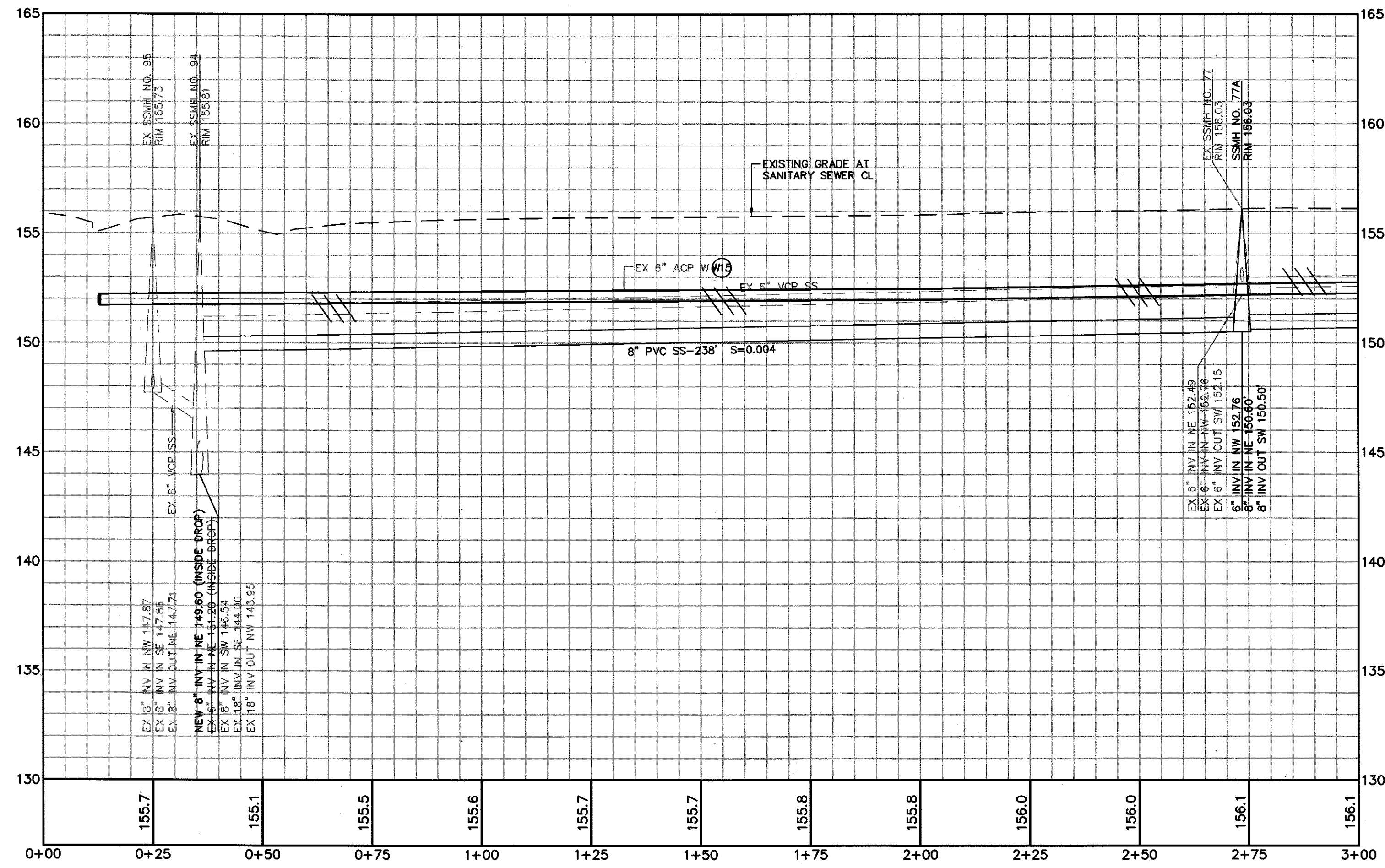
SCALE: As Shown  
DWN BY: CAG  
DATE: OCT 2021  
CHK BY: AJD

**CITY OF SANTA ROSA &  
CLEVELAND AVENUE &  
ST. ROSE DISTRICT  
SEWER & WATER IMPROVEMENTS  
A ST PLAN & PROFILE**

CONTRACT NO.  
C02041  
SHEET 9 OF 12  
FILE NO. 2018-0003



THE LOCATIONS OF EXISTING UTILITIES SHOWN ON THE PLANS ARE APPROXIMATE ONLY. THE CONTRACTOR SHALL POTHOLE AND DETERMINE THE EXACT HORIZONTAL AND VERTICAL LOCATION OF ALL EXISTING UTILITIES FIVE WORKING DAYS PRIOR TO THE START OF TRENCHING AND SHALL ADJUST THE DEPTH OF THE NEW UTILITIES TO CLEAR ANY CONFLICTS AS DIRECTED BY THE ENGINEER.

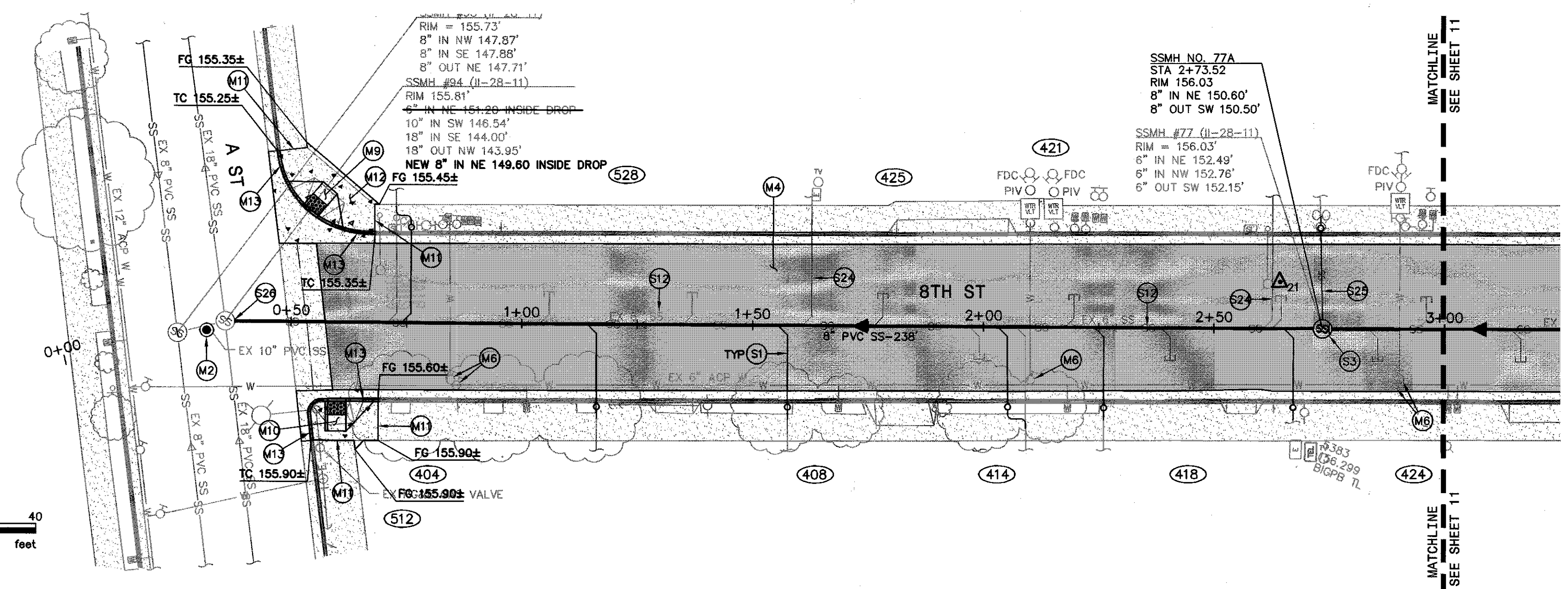


8TH STREET PROFILE

H: 1"=20'  
V: 1"=4'

KEYNOTES:

- (S1) INSTALL NEW 4" SANITARY SEWER LATERAL IN ACCORDANCE WITH CITY STANDARD 513-A AND DETAILS 1 & 2, SHEET 12 OF THESE DRAWINGS. ALL NEW LATERALS SHALL HAVE A MINIMUM CLEARANCE OF 5-FEET FROM DOMESTIC WATER LATERALS. PERFORM ALL TRENCHING AND SURFACE RESTORATION IN ACCORDANCE WITH CITY STANDARD 215. (6 ON THIS SHEET)
- (S3) REMOVE EXISTING 48" SANITARY SEWER MANHOLE AND INSTALL NEW 60" MANHOLE WITH INSIDE DROP IN ACCORDANCE WITH CITY STANDARDS 500 & 503.
- (S12) REMOVE EXISTING SANITARY SEWER COMPLETELY AND INSTALL NEW SANITARY SEWER MAIN IN ACCORDANCE WITH CITY STANDARDS. PERFORM ALL TRENCHING AND SURFACE RESTORATION IN ACCORDANCE WITH CITY STANDARD 215.
- (S14) REMOVE AND REPLACE 48" SANITARY SEWER MANHOLE IN ACCORDANCE WITH CITY STANDARD 500.
- (S24) VERIFY IF EXISTING LATERAL IS LIVE. IF LATERAL IS DETERMINED TO BE LIVE, INSTALL NEW 4" SANITARY SEWER LATERAL IN ACCORDANCE WITH STANDARD 513-A AND DETAIL 1, SHEET 12. ALL NEW LATERALS SHALL HAVE A MINIMUM CLEARANCE OF 5-FEET FROM DOMESTIC WATER LATERALS. PERFORM ALL TRENCHING AND SURFACE RESTORATION IN ACCORDANCE WITH CITY OF SANTA ROSA STANDARD 215.
- (S26) REMOVE AND REPLACE EXISTING 6-INCH SANITARY SEWER LATERAL AND CLEAN OUT IN ACCORDANCE WITH CITY STANDARD 513-A. PERFORM ALL TRENCHING AND SURFACE RESTORATION IN ACCORDANCE WITH CITY OF SANTA ROSA STANDARD 215.
- (S28) MODIFY SEWER MANHOLE WITH NEW 8-INCH CONNECTION IN ACCORDANCE WITH SECTION 130-1.07A OF THE CITY STANDARD SPECIFICATIONS.
- (M13) EXISTING WATER MAIN DEPTH IS TAKEN FROM RECORD INFORMATION. CONTRACTOR TO POTHOLE AND VERIFY ACTUAL DEPTH OF EXISTING WATER MAINS BEFORE INSTALLATION OF NEW UTILITY SERVICE LATERALS.
- (M2) REPLACE EXISTING CITY MONUMENT IN ACCORDANCE WITH CITY STANDARD 280 IF DAMAGED. NOTIFY CITY SURVEYOR 10 DAYS PRIOR TO CONSTRUCTION FOR CORNER RECORD SURVEY.
- (M4) RECONSTRUCT ROADWAY SURFACE IN ACCORDANCE WITH DETAILS 4 & 5, SHEET 12 OF THESE DRAWINGS.
- (M6) ADJUST EXISTING UTILITY TO FINISHED GRADE AS REQUIRED TO FACILITATE THE PROPOSED IMPROVEMENTS.
- (M9) CASE 'D' PEDESTRIAN RAMP IN ACCORDANCE WITH CALTRANS STANDARD PLAN A88A.
- (M10) CASE 'G' PEDESTRIAN RAMP IN ACCORDANCE WITH CALTRANS STANDARD PLAN A88A.
- (M11) CONFORM TO EXISTING SURFACE ELEVATION IN A MANNER WHICH PROVIDES A UNIFORM TRANSITION BETWEEN SURFACES AND DOES NOT IMPEDE DRAINAGE.
- (M12) REPLACE SIDEWALK IN ACCORDANCE WITH CITY OF SANTA ROSA STANDARD 237.
- (M13) REPLACE CURB AND GUTTER IN ACCORDANCE WITH CITY OF SANTA ROSA STANDARD 241.



PLAN  
SCALE: 1"=20'

CITY OF SANTA ROSA  
CLEVELAND AVENUE &  
ST. ROSE DISTRICT  
SEWER & WATER IMPROVEMENTS  
8TH ST PLAN & PROFILE  
STA 0+00 TO STA 3+00

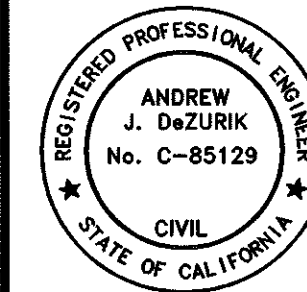




ENGINEERS / SURVEYORS / PLANNERS  
200 4TH ST, STE. 300 SANTA ROSA, CA 95401  
(707) 543-8800 FAX: (707) 543-8839

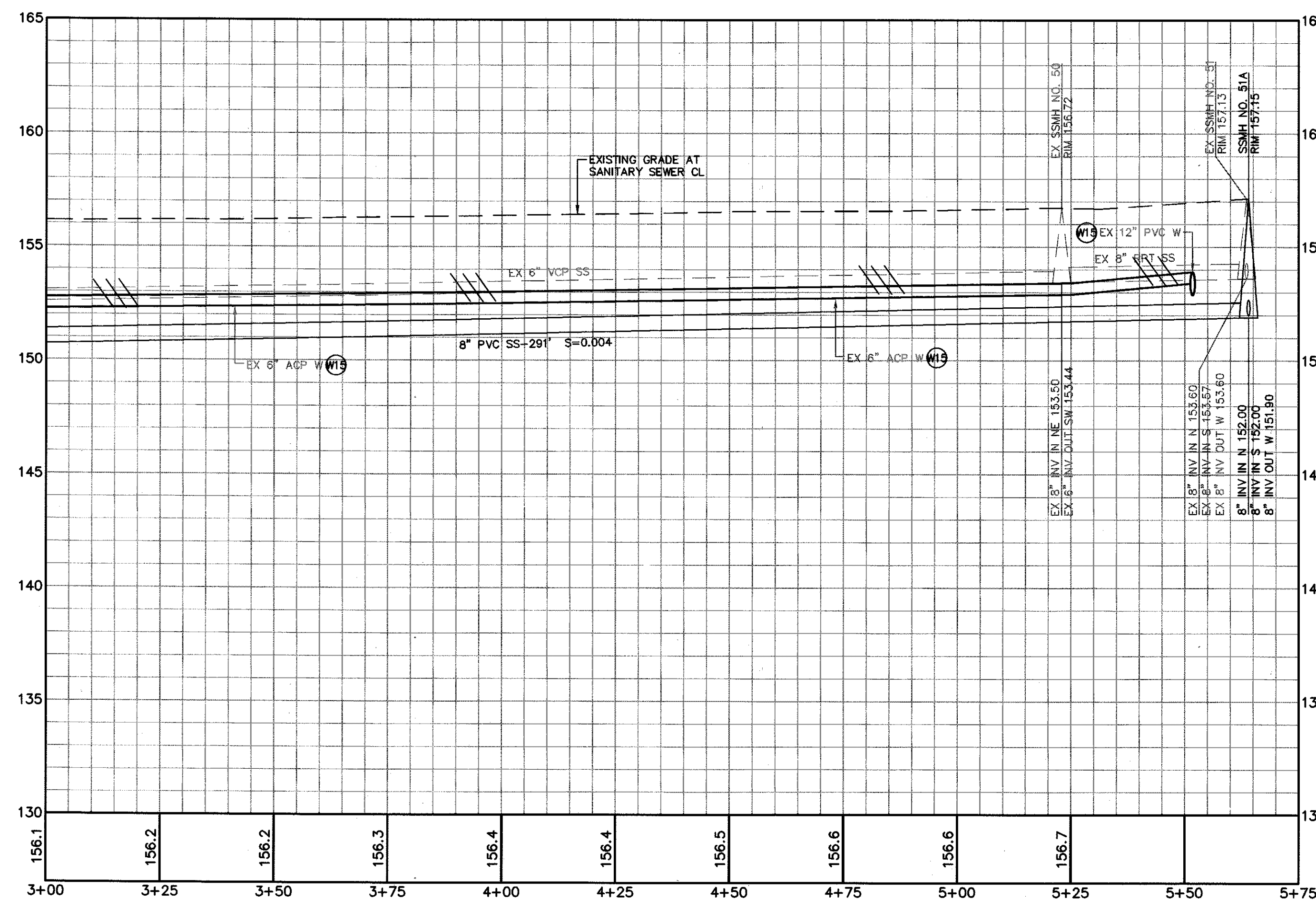
02/28/2022  
ANDREW J. DeZURIK  
C-85129

DWN BY: CAG CHK BY: AJD DATE: OCT 2021



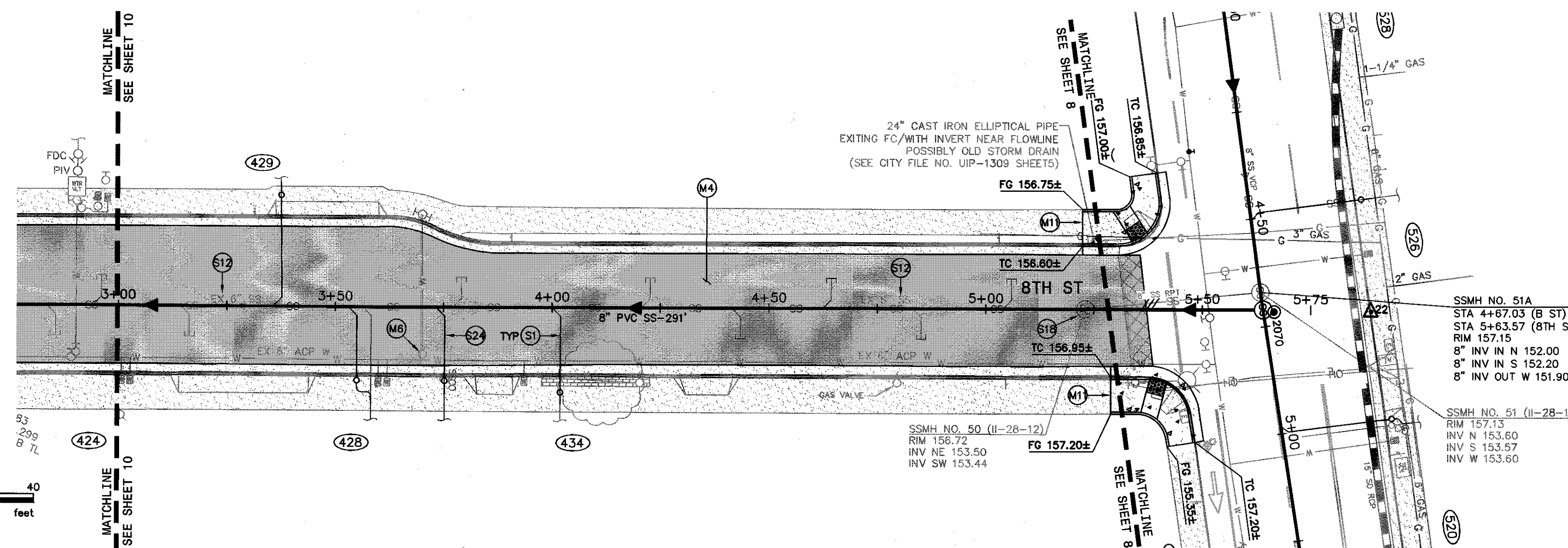
City of  
Santa Rosa

THE LOCATIONS OF EXISTING UTILITIES SHOWN ON THE PLANS ARE APPROXIMATE ONLY. THE CONTRACTOR SHALL POTHOLE AND DETERMINE THE EXACT HORIZONTAL AND VERTICAL LOCATION OF ALL EXISTING UTILITIES FIVE WORKING DAYS PRIOR TO THE START OF TRENCHING AND SHALL ADJUST THE DEPTH OF THE NEW UTILITIES TO CLEAR ANY CONFLICTS AS DIRECTED BY THE ENGINEER.



8TH STREET PROFILE

H: 1"=20'  
V: 1"=4'



PLAN  
SCALE: 1"=20'

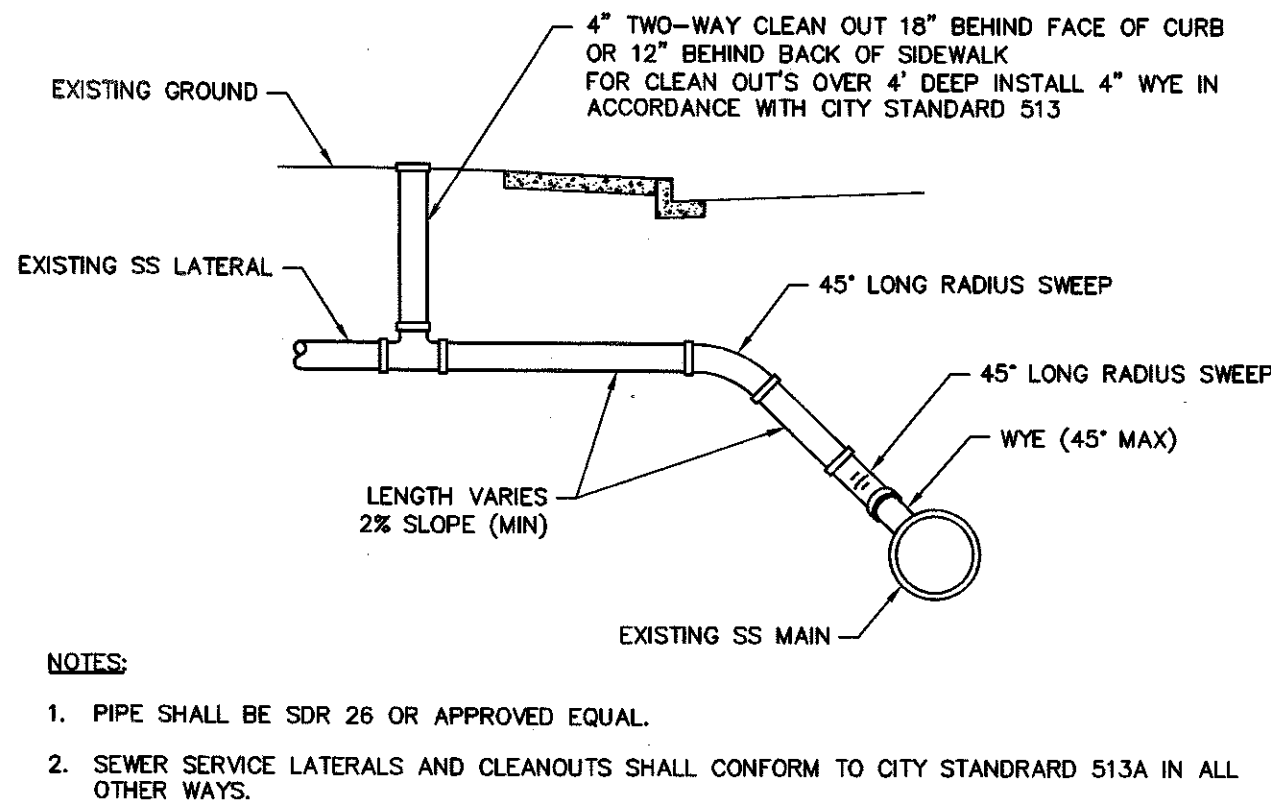
KEYNOTES:

- (S1) INSTALL NEW 4" SANITARY SEWER LATERAL IN ACCORDANCE WITH CITY STANDARD 513-A AND DETAILS 1 & 2, SHEET 12 OF THESE DRAWINGS. ALL NEW LATERALS SHALL HAVE A MINIMUM CLEARANCE OF 5-FEET FROM DOMESTIC WATER LATERALS. PERFORM ALL TRENCHING AND SURFACE RESTORATION IN ACCORDANCE WITH CITY STANDARD 215. (3 ON THIS SHEET)
- (S2) REMOVE EXISTING SANITARY SEWER COMPLETELY AND INSTALL NEW SANITARY SEWER MAIN IN ACCORDANCE WITH CITY STANDARDS. PERFORM ALL TRENCHING AND SURFACE RESTORATION IN ACCORDANCE WITH CITY STANDARD 215.
- (S4) REMOVE AND REPLACE 48" SANITARY SEWER MANHOLE IN ACCORDANCE WITH CITY STANDARD 500.
- (S24) VERIFY IF EXISTING LATERAL IS LIVE. IF LATERAL IS DETERMINED TO BE LIVE, INSTALL NEW 4" SANITARY SEWER LATERAL IN ACCORDANCE WITH STANDARD 513-A AND DETAIL 1, SHEET 12. ALL NEW LATERALS SHALL HAVE A MINIMUM CLEARANCE OF 5-FEET FROM DOMESTIC WATER LATERALS. PERFORM ALL TRENCHING AND SURFACE RESTORATION IN ACCORDANCE WITH CITY OF SANTA ROSA STANDARD 215.
- (M15) EXISTING WATER MAIN DEPTH IS TAKEN FROM RECORD INFORMATION. CONTRACTOR TO POTHOLE AND VERIFY ACTUAL DEPTH OF EXISTING WATER MAINS BEFORE INSTALLATION OF NEW UTILITY SERVICE LATERALS.
- (M4) RECONSTRUCT ROADWAY SURFACE IN ACCORDANCE WITH DETAILS 4 & 5, SHEET 12 OF THESE DRAWINGS.
- (M6) ADJUST EXISTING UTILITY TO FINISHED GRADE AS REQUIRED TO FACILITATE THE PROPOSED IMPROVEMENTS.
- (M1) CONFORM TO EXISTING SURFACE ELEVATION IN A MANNER WHICH PROVIDES A UNIFORM TRANSITION BETWEEN SURFACES AND DOES NOT IMPEDE DRAINAGE.

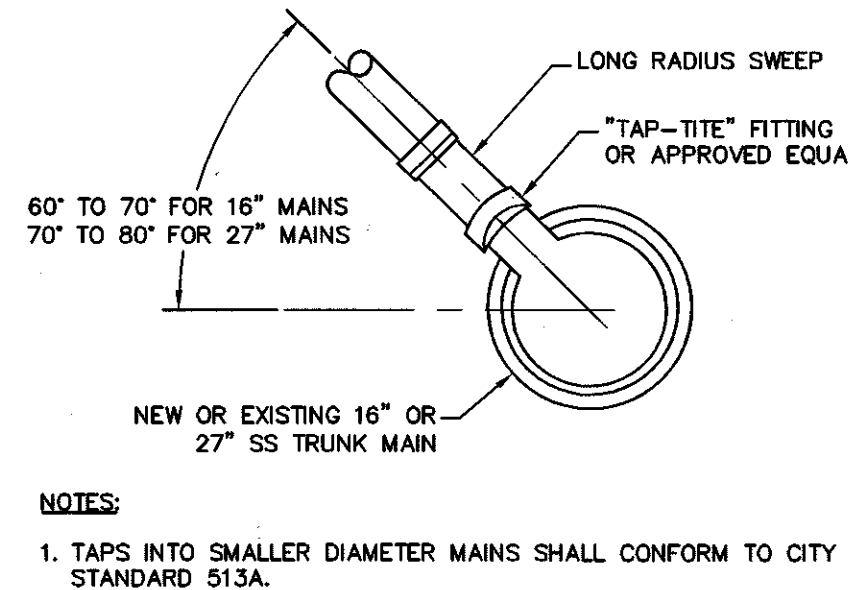
CITY OF SANTA ROSA  
CLEVELAND AVENUE &  
ST. ROSE DISTRICT  
SEWER & WATER IMPROVEMENTS  
8TH ST PLAN & PROFILE  
STA 3+00 TO STA 5+75

CONTRACT NO.  
C02041  
SHEET 11 OF 12  
FILE NO. 2018-0003

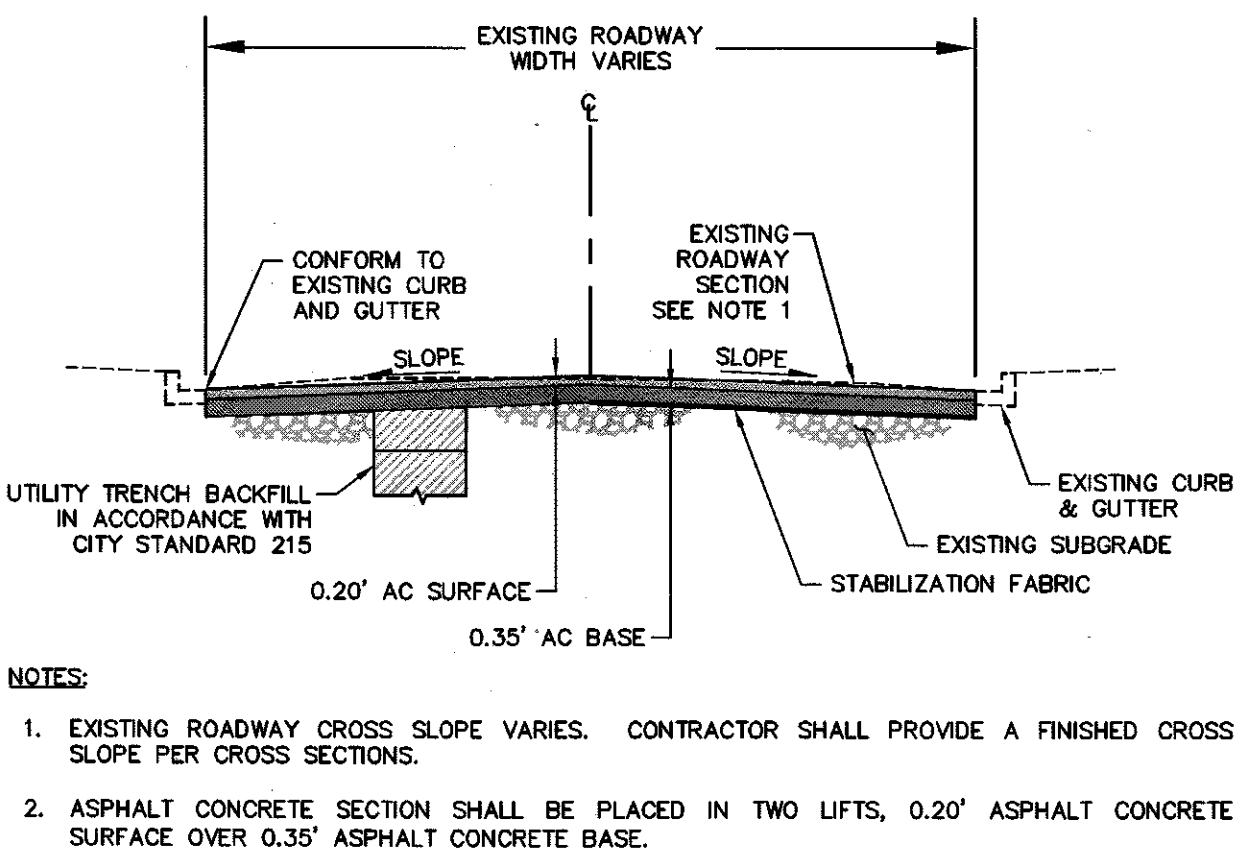




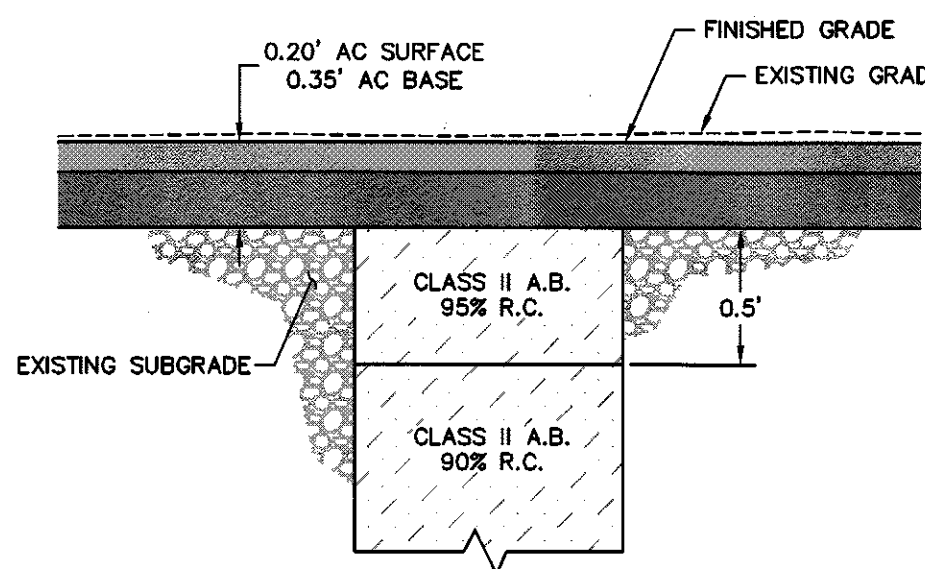
4" LATERAL  
REPLACEMENT DETAIL  
NO SCALE



16" & 27" SS TRUNK  
MAIN TAP DETAIL  
NO SCALE



ROADWAY RESTORATION DETAIL  
NO SCALE



UTILITY TRENCH BACKFILL IN ROADWAY  
RECONSTRUCTION AREA DETAIL  
NO SCALE