



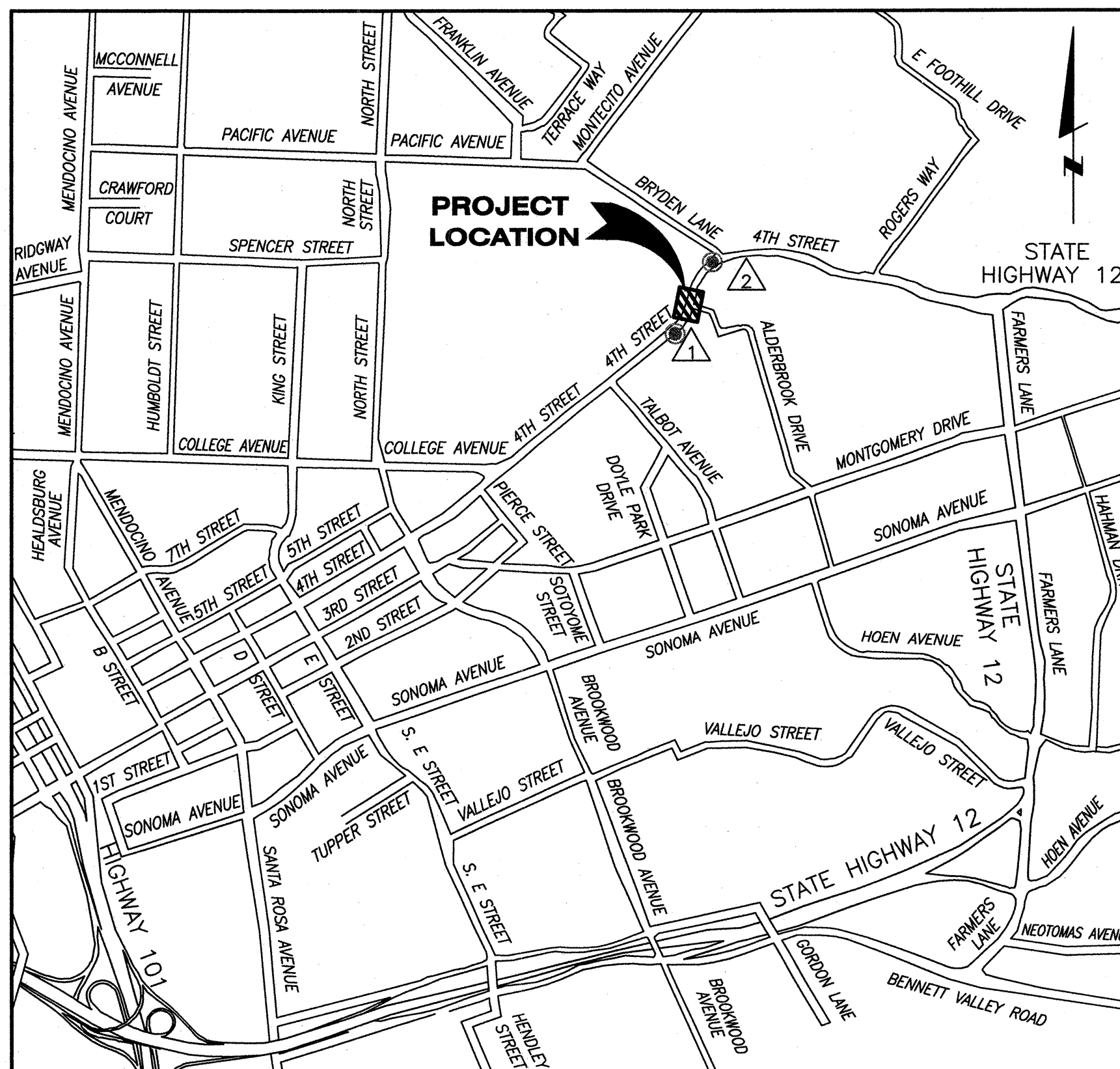
# CITY OF SANTA ROSA IMPROVEMENT PLANS FOR

# ALDERBROOK DRIVE CROSSING TREATMENT 4TH STREET AND ALDERBROOK DRIVE INTERSECTION

CONTRACT No. C02058

## GENERAL NOTES

- ALL WORKMANSHIP, MATERIALS AND CONSTRUCTION SHALL CONFORM TO THE CITY OF SANTA ROSA STANDARD PLANS, THE CONSTRUCTION SPECIFICATIONS FOR PUBLIC IMPROVEMENTS, THE SPECIAL PROVISIONS FOR THIS PROJECT AND THE STATE STANDARD SPECIFICATIONS AND STANDARD PLANS. THE CONTRACTOR IS RESPONSIBLE FOR UNDERSTANDING ALL STANDARDS PERTAINING TO THIS PROJECT.
- THE CONTRACTOR SHALL CALL UNDERGROUND SERVICE ALERT (USA) AT 1-800-642-2444 NO LESS THAN 2 WORKING DAYS PRIOR TO ANY EXCAVATION FOR MARK OUTS OF EXISTING UNDERGROUND FACILITIES IN ACCORDANCE WITH SECTION 5-1.36E OF THE SPECIAL PROVISIONS.
- THE LOCATIONS OF UNDERGROUND UTILITIES AND OTHER OBSTACLES SHOWN ON THE PLANS ARE BASED ON THE BEST AVAILABLE INFORMATION. THE CONTRACTOR SHALL POTHOLE AND DETERMINE THE EXACT LOCATION OF ALL POTENTIAL CONFLICTS IN ACCORDANCE WITH USA LAWS AND THESE SPECIAL PROVISIONS AND THE STANDARD SPECIFICATIONS. IF ANY UNMARKED UTILITIES ARE ENCOUNTERED, OR IF UNABLE TO LOCATE A MARKED UTILITY AFTER POTHOLING, THE CONTRACTOR SHALL IMMEDIATELY NOTIFY THE OWNER OF THAT UTILITY AND THE ENGINEER, PER SECTION 15-7 OF THE SPECIAL PROVISIONS.
- ALL SEWER MANHOLES, MAINLINE CLEANOUTS AND WATER VALVES THAT ARE ON ACTIVE SYSTEMS SHALL BE ACCESSIBLE TO CITY PERSONNEL AT ALL TIMES AND SHALL BE BROUGHT TO GRADE WITHIN 48 HOURS OF PAVING, PER SECTION 15-2.10B OF THE SPECIAL PROVISIONS.
- THE CONTRACTOR SHALL PROTECT AND PRESERVE CITY MONUMENTS. THE CONTRACTOR SHALL COORDINATE WITH THE CITY ENGINEER 10 WORKING DAYS IN ADVANCE FOR REFERENCING OF EXISTING MONUMENTS TO BE DISTURBED. THE CONTRACTOR SHALL RECONSTRUCT DISTURBED MONUMENTS IN ACCORDANCE WITH CITY STANDARD-280.
- OVERHEAD UTILITY SERVICE DROPS ARE NOT SHOWN ON THE PLANS. THE CONTRACTOR SHALL INVESTIGATE THE SITE AND BE AWARE OF LIMITED CLEARANCES UNDER OVERHEAD UTILITY LINES AND LOW HANGING TREE BRANCHES. THE CONTRACTOR'S TRUCKS AND EXCAVATION EQUIPMENT SHALL BE SIZED SO THAT OVERHEAD WIRES AND TREE BRANCHES ARE NOT DAMAGED.
- ALL EXCAVATED MATERIAL SHALL BE DISPOSED OF AS GENERATED AND AT NO TIME SHALL THE CONTRACTOR PLACE EXCAVATED MATERIAL AT THE WORK SITE, PER SECTION 71-1.03 OF THE SPECIAL PROVISIONS.
- THE CONTRACTOR SHALL ONLY REMOVE EXISTING TREES OR SHRUBS AS NOTED ON THE PLANS OR AS DIRECTED BY THE ENGINEER.
- FOR CLARITY OF EXISTING SUBSURFACE CONDITIONS, NOT ALL CROSSWALKS, STOP BARS, OR EXISTING PAVEMENT MARKINGS ARE SHOWN ON THE PLANS. TRAFFIC STRIPES, RAISED PAVEMENT MARKERS AND PAVEMENT MARKINGS DAMAGED DUE TO THE CONTRACTOR'S OPERATIONS SHALL BE REPLACED PER CITY OF SANTA ROSA TRAFFIC STANDARDS PART III, TRAFFIC MARKINGS. PATCHING OF DAMAGED MARKINGS WILL NOT BE ALLOWED WITHOUT PRIOR APPROVAL FROM THE ENGINEER. ALL DAMAGED RAISED PAVEMENT (NON-REFLECTIVE) MARKERS MUST BE CERAMIC.



**LOCATION MAP**  
NOT TO SCALE

## INDEX TO SHEETS

SHEET NO.	TITLE
1.	COVER SHEET, NOTES & ABBREVIATIONS
2.	PLAN, LEGEND & DETAILS

## BASIS OF BEARINGS

ALL COORDINATES ARE TIED TO THE CITY OF SANTA ROSA'S HORIZONTAL CONTROL NETWORK WHICH IS BASED ON NAD 83, EPOCH 91.35.

## BENCH LEVEL DATA

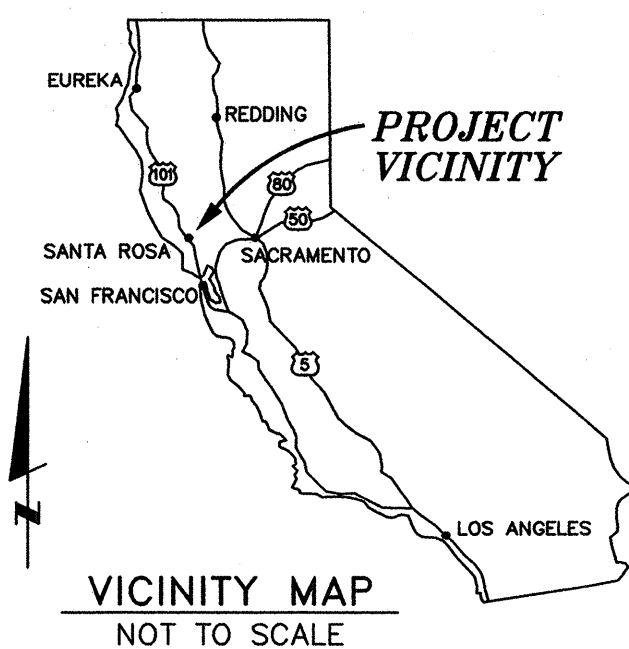
ELEVATIONS ARE TIED TO THE CITY OF SANTA ROSA'S VERTICAL CONTROL NETWORK WHICH IS BASED ON THE CITY OF SANTA ROSA BENCHMARK A51 FOUND NAIL IN LEAD PLUG ON CONCRETE BASE OF FLAG POLE AT PROCTOR TERRACE SCHOOL.  
ELEVATION: 191.96 FEET (NGVD 1929)

## ABBREVIATIONS

ADA	AMERICAN DISABILITY ACT	NAD	NORTH AMERICAN DATUM
AGG	AGGREGATE	NGVD	NATIONAL GEODETIC VERTICAL DATUM
APN	ASSESSOR PARCEL NUMBER	NTS	NOT TO SCALE
BM	BENCHMARK	O.C.	ON CENTER
BSW	BACK OF SIDEWALK	OHW	OVERHEAD WIRES
CL	CENTER LINE	PED.	PEDESTRIAN
CY	CUBIC YARDS	PB	PULLBOX
C.S.P.	CALTRANS STANDARD PLANS	PCC	PORTLAND CEMENT CONCRETE
CSR	CITY OF SANTA ROSA	PG&E	PACIFIC GAS & ELECTRIC COMPANY
E	EASTING	PT#	POINT NUMBER
ELECT	ELECTRICAL	R	RADIUS
EX.	EXIST	RC	RELATIVE COMPACTION
GALV	GALVANIZED	SL	STREET LIGHT
HMA	HOT MIX ASPHALT	STD	STANDARD
LF	LINEAR FEET	TC	TOP OF CURB
LG	LIP OF GUTTER	TYP	TYPICAL
MAX	MAXIMUM	USA	UNITED STATES OF AMERICA
MIN	MINIMUM	W/ WTR	WATER
MON	MONUMENT	WV	WATER VALVE
N	NORTHING		

## LEGEND OF SYMBOLS

DESCRIPTION	EXISTING	NEW
SAWCUT LIMITS		---
TRENCH DRAIN		[Symbol]
CONCRETE PAVEMENT	[Symbol]	[Symbol]
TRUNCATED DOME		[Symbol]
ROUNDED STONES		[Symbol]
STRIPING	[Symbol]	[Symbol]
WATER MAIN, GATE VALVE, CROSS, & ELBOW	[Symbol]	[Symbol]
STREET LIGHT/ELECTRICAL CONDUIT & BOXES	[Symbol]	[Symbol]
SURVEY CONTROL POINT AND SURVEY MONUMENT	[Symbol]	[Symbol]
STREET SIGN AND APN	[Symbol]	[Symbol]



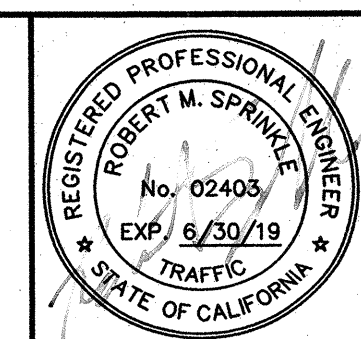
SURVEY CONTROL DATA				
PT#	NORTHING	EASTING	ELEVATION	DESCRIPTION
1	1926234.225	6361654.333	188.09	MON WELL, DISC*
2	1926699.655	6361911.825	192.77	BRASS DISK*
3	1926206.994	6361684.372	189.07	CHISELED X

\* SEE LOCATION MAP ABOVE FOR CITY OF SANTA ROSA BENCHMARK

BEFORE EXCAVATING  
CALL U.S.A.  
UNDERGROUND SERVICE ALERT  
800-642-2444  
TWO WORKING DAYS BEFORE ALL  
PLANNED WORK OPERATIONS

## RECORD PLAN DATA

PROJECT START:	WATER SERVICE TYPE: NONE
PROJECT END:	MANUFACTURER: N/A
GEN. CONTRACTOR:	FIRE HYDRANT TYPE: NONE
SUPERINTENDENT:	MANUFACTURER: N/A
UNDERGROUND CONTRACTOR:	INSPECTOR:
FOREMAN:	CONSTRUCTION MANAGER:
SEWER PIPE TYPE: NONE	RECORD PLANS BY:
MANUFACTURER: N/A	ADDITIONAL INFO:
SEWER FITTINGS	
MANUFACTURER: NONE	
M.H. MANUFACTURER: NONE	
WATER PIPE TYPE: NONE	
MANUFACTURER: NONE	
WATER VALVE	
MANUFACTURER: NONE	
WATER FITTINGS	
MANUFACTURER: NONE	

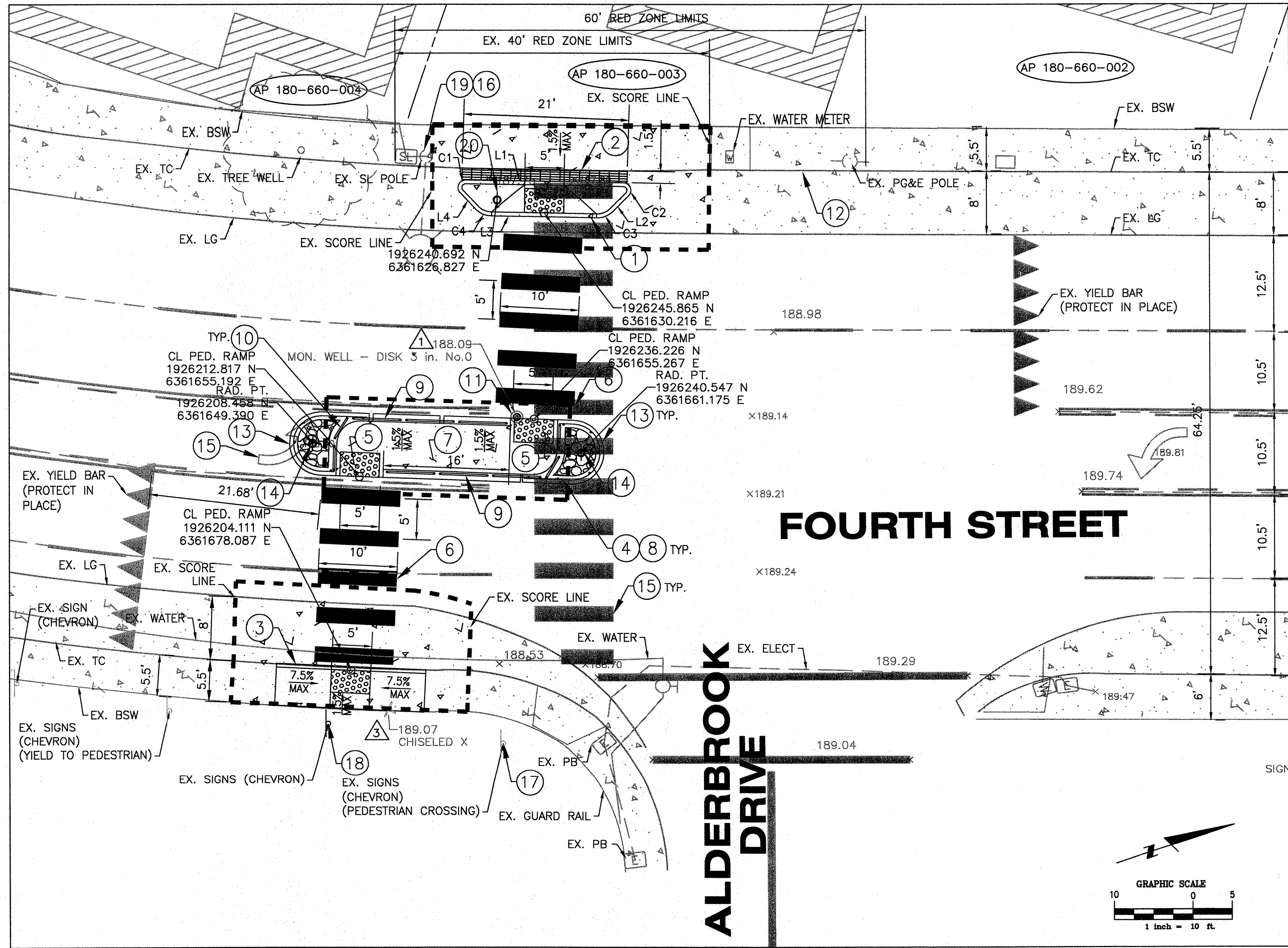


Design/Const	Survey	TPW Field Svc	Traffic	Materials Lab	Dept.	Signature	Date

SCALE: 1" = 10'	DATE: JUNE 1, 2018	CHK BY: CCC
DWN BY: CDA	APPROVED: Deputy Director - Engineering	Date: 6/1/18
	By: Lori Urbansk, PE	

CITY OF SANTA ROSA	CONTRACT NO. C02058
ALDERBROOK DRIVE CROSSING TREATMENT	SHEET 1 OF 2
COVER SHEET, NOTES & ABBREVIATIONS	FILE NO. 2017-0036





**PLAN**

**CONSTRUCTION NOTES**

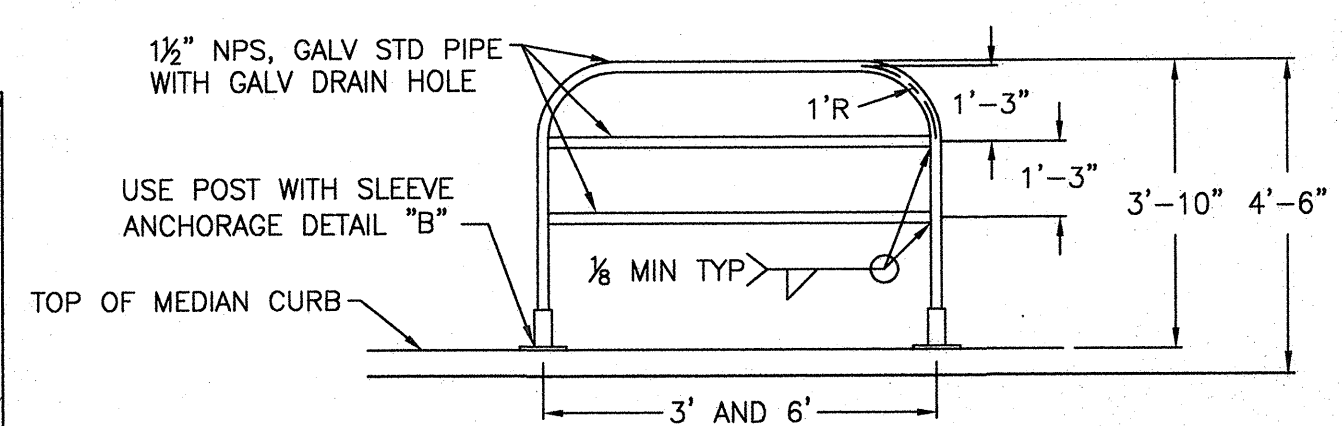
- 1 SAWCUT AND REMOVE EXISTING SIDEWALK, HMA, CURB, & GUTTER TO EXISTING JOINTS. INSTALL ADA BULB-OUT WITH A CURB RAMP CASE "A" PER CALTRANS REVISED STD PLAN RSP A88A.
- 2 INSTALL 21 LF 18" TRENCH DRAIN (CAST-IN-PLACE) FRAME AND GRATE OVER GUTTER. GRATE SURFACE TEXTURE SHALL BE ADA COMPLIANT. SEE DETAIL "D" AND "E".
- 3 SAW-CUT AND REMOVE EXISTING SIDEWALK, CURB, & GUTTER TO EXISTING JOINTS. INSTALL CURB RAMP CASE "C" PER CALTRANS REVISED STD PLAN RSP A88A AND THE CALIFORNIA BUILDING CODE.
- 4 INSTALL 8" TALL MEDIAN CURB WITH #4 REBAR PINNED 6" INTO EXISTING ASPHALT CONCRETE ROAD AT 4' ON CENTER AND PER PEDESTRIAN ISLAND DETAILS "C" AND "F".
- 5 INSTALL 3'x5' TRUNCATED DOMES IN PCC PER MANUFACTURER'S RECOMMENDATION.
- 6 INSTALL WHITE THERMOPLASTIC "CONTINENTAL" CROSSWALK.
- 7 SAWCUT AND REMOVE EXISTING PAVEMENT. INSTALL CONCRETE PATHWAY PER DETAIL "G" WITH PCC PAVEMENT. MATCH TO EXISTING PAVEMENT AT CONFORM LINE.
- 8 INSTALL #4 HORIZONTAL REBAR PER DETAIL "F".
- 9 INSTALL 6' TYPE I PEDESTRIAN BARRICADE DETAIL "A" WITH SLEEVE ATTACHED TO A THREADED POST ANCHOR PER PEDESTRIAN ISLAND DETAIL "B" AND "G". SEE DETAIL "F" FOR LAYOUT.
- 10 INSTALL 3' TYPE I PEDESTRIAN BARRICADE DETAIL "A" WITH SLEEVE ATTACHED TO A THREADED POST ANCHOR PER PEDESTRIAN ISLAND DETAIL "B". SEE DETAIL "F" FOR LAYOUT.
- 11 INSTALL TRUNCATED DOMES OVER EXISTING MONUMENT COVER WITH DOMES CUT OUT IN THE SHAPE OF THE LID AND THEN ATTACHED TO LID. PROTECT-IN-PLACE THE EXISTING MONUMENT.
- 12 PAINT CURB RED PER CITY STANDARD SHOWN ON PLANS IN RED ZONE LIMIT.
- 13 INSTALL TRAFFIC MARKING ON MEDIAN ISLAND PER CITY STD-721.
- 14 INSTALL SIGN PER CITY STD-721.
- 15 REMOVE EXISTING WHITE STRIPES AND PAVEMENT MARKING CONFLICTING WITH PROPOSED STRIPING.
- 16 STREET LIGHT SHALL BE PROTECTED IN PLACE.

**LINE & CURVE LINE DATA TABLE**

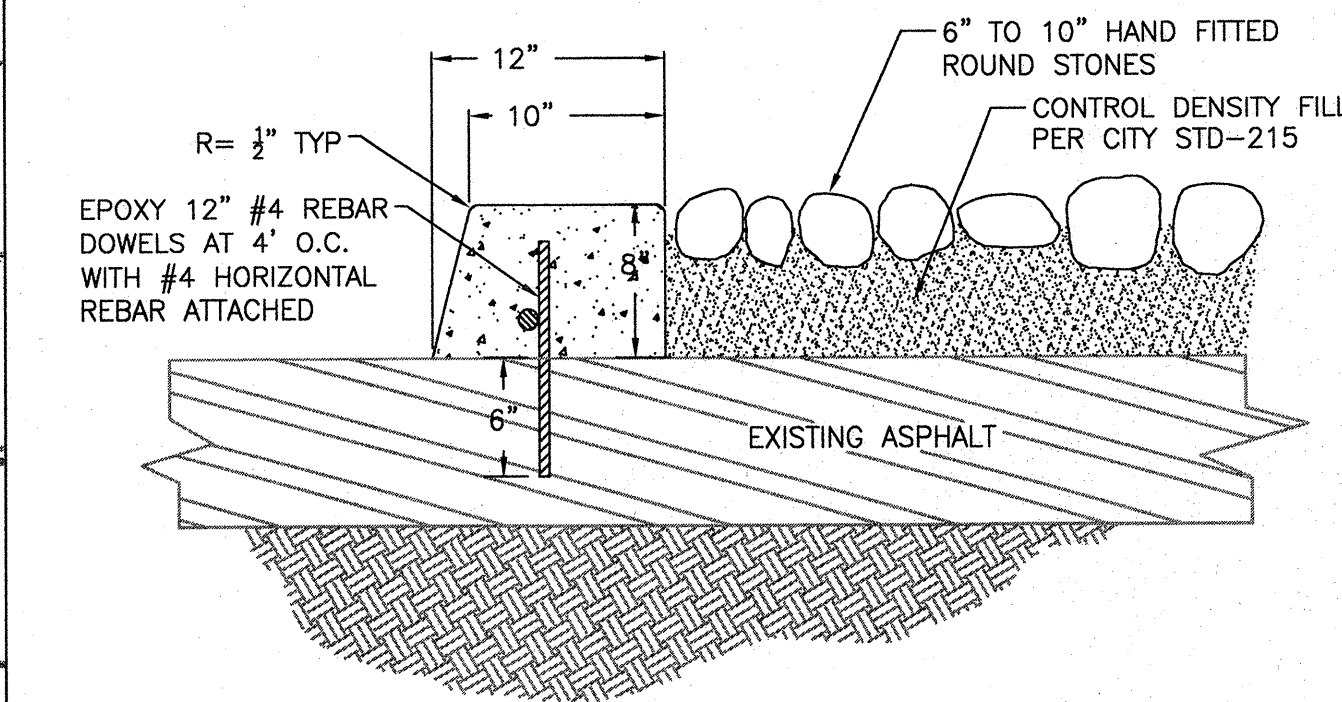
LINE# / CURVE #	LENGTH	RADIUS	DELTA	DIRECTION
C1	2.36'	1.00'	135°	-
L1	20.00'	-	-	S19° 11' 32.92"W
L2	2.71'	-	-	N25° 48' 27.08"W
C3	2.36'	3.00'	45°	-
L3	13.34'	-	-	S19° 11' 32.92"W
L4	2.71'	-	-	N64° 11' 32.92"W

**CONSTRUCTION NOTES (CONTINUED)**

- 17 REMOVE AND SALVAGE EX. SIGN OF PEDESTRIAN CROSSING (W11-2 & W16-7P) FROM CA MUTCD. POLE WILL BE CAPPED AT THE HEIGHT OF THE CHEVRON SIGN.
- 18 INSTALL SALVAGED EX. SIGN OF PEDESTRIAN CROSSING (W11-2 & W16-7P) ON TO EX. SIGN OF CHEVRON PER CITY STANDARD-701.
- 19 REMOVE AND SALVAGE EX. SIGN OF PEDESTRIAN (W11-2 & W16-7P) CROSSING FROM EX. STREET LIGHTING POLE.
- 20 INSTALL SALVAGED EX. SIGN OF PEDESTRIAN CROSSING (W11-2 & W16-7P) FROM EX. LIGHT POLE PER CITY STANDARD-701.



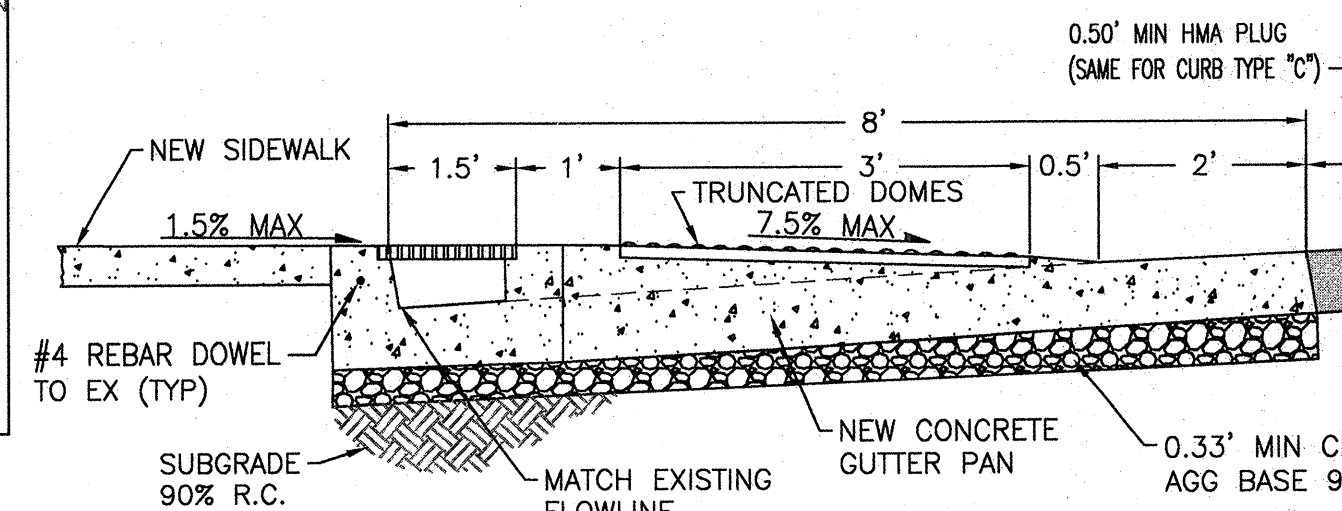
**A TYPE I PEDESTRIAN BARRICADE (MODIFIED CALTRANS STD ES-7Q)**  
NOT TO SCALE



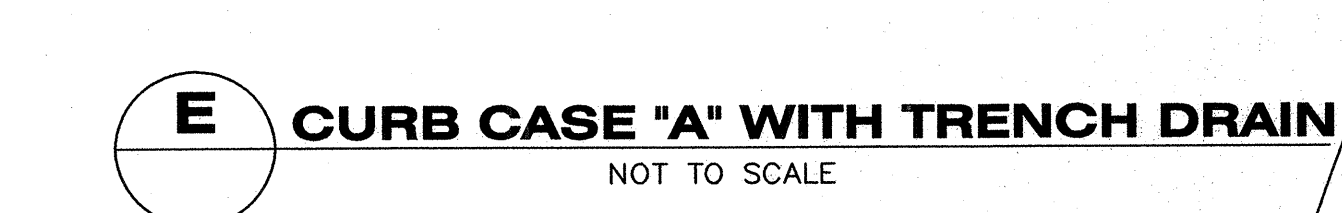
**B POST WITH SLEEVE ANCHORAGE**  
NOT TO SCALE



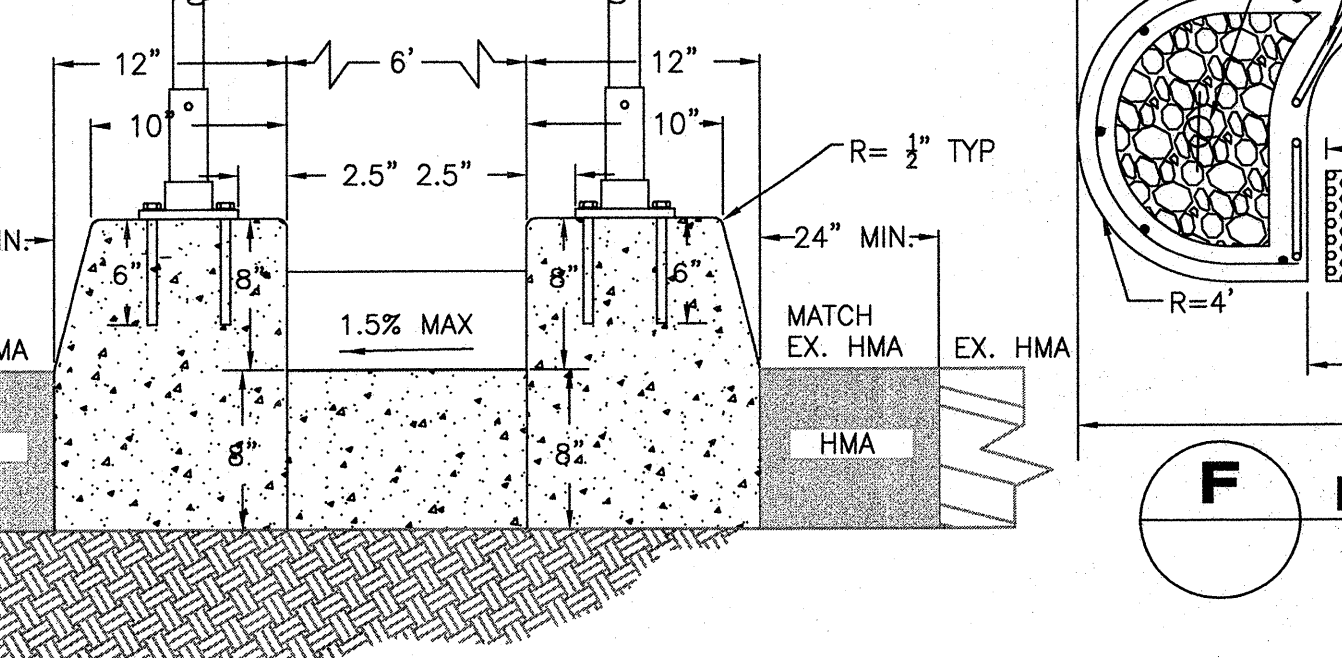
**C PEDESTRIAN ISLAND DETAIL**  
NOT TO SCALE



**D TRENCH DRAIN FRAME & GRATE**  
NOT TO SCALE



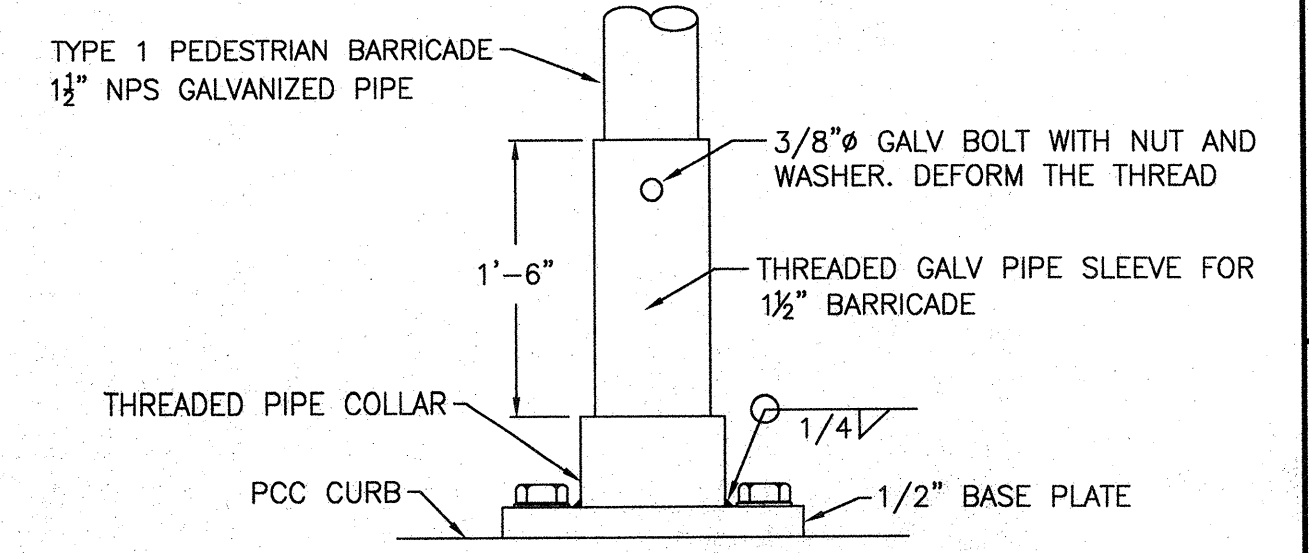
**E CURB CASE "A" WITH TRENCH DRAIN**  
NOT TO SCALE



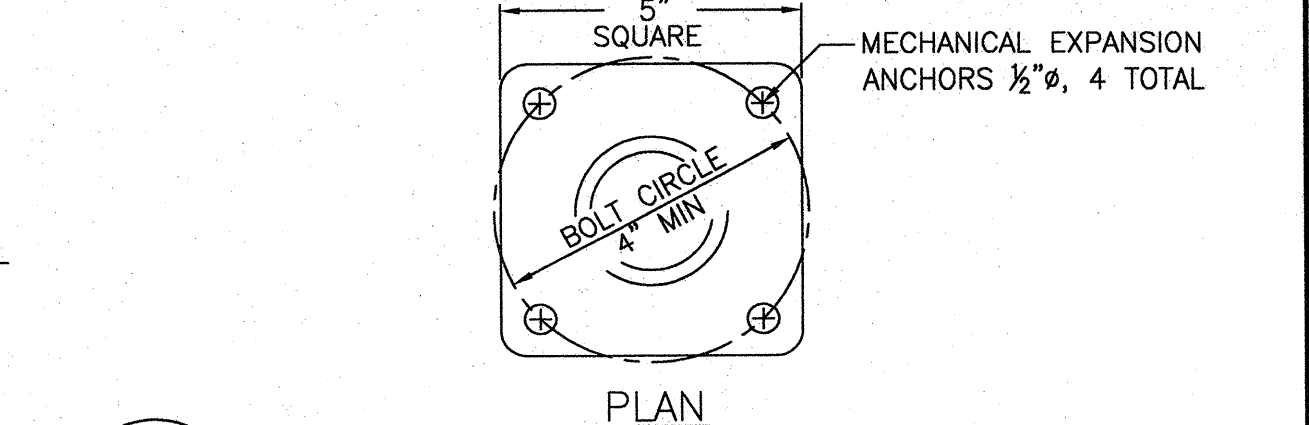
**F BARRICADE AND REBAR PLACEMENT DETAIL**  
1"=5'



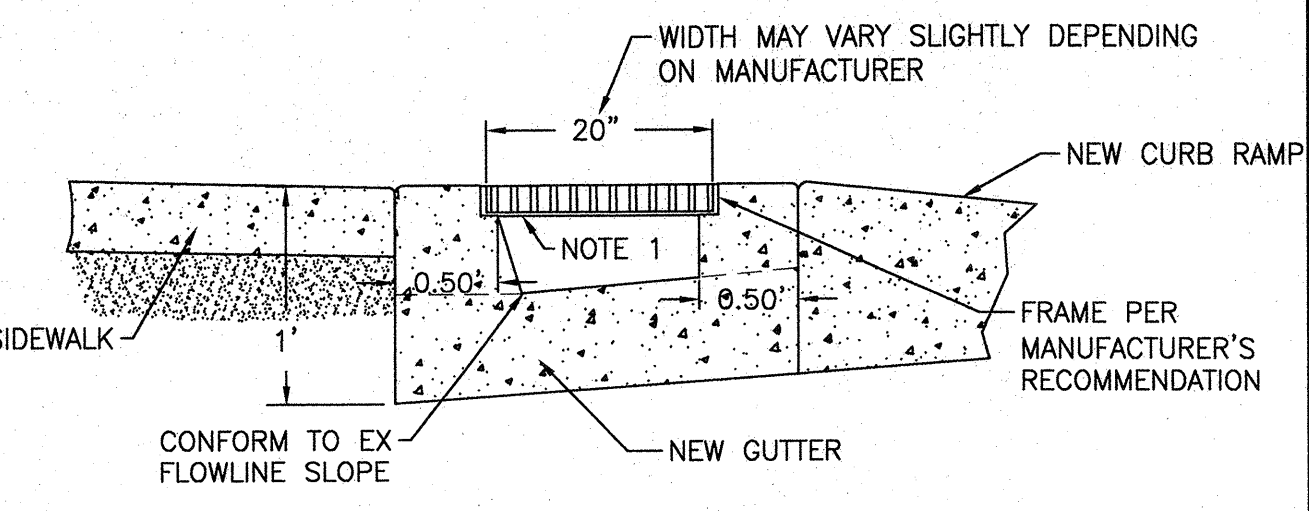
**G PEDESTRIAN ISLAND CONCRETE WALKWAY DETAIL**  
NOT TO SCALE



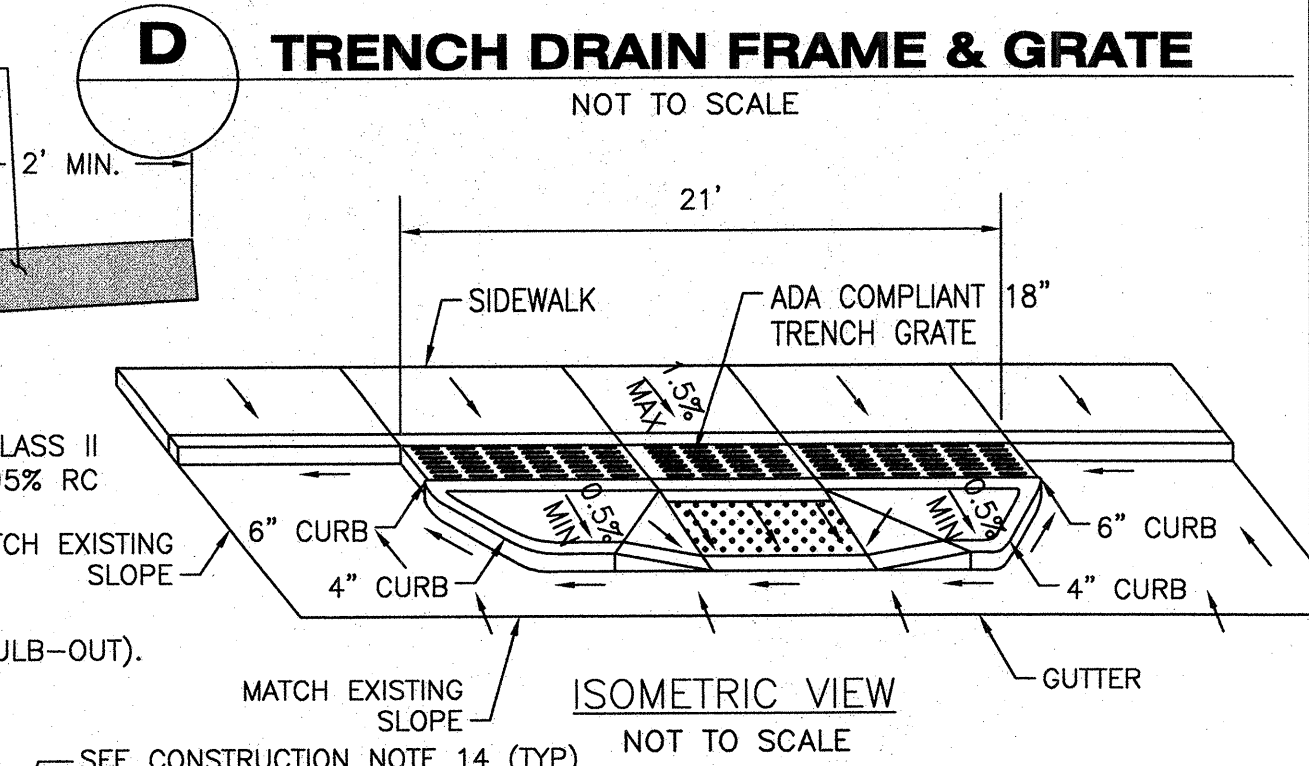
**H TYPE 1 PEDESTRIAN BARRICADE**  
ELEVATION



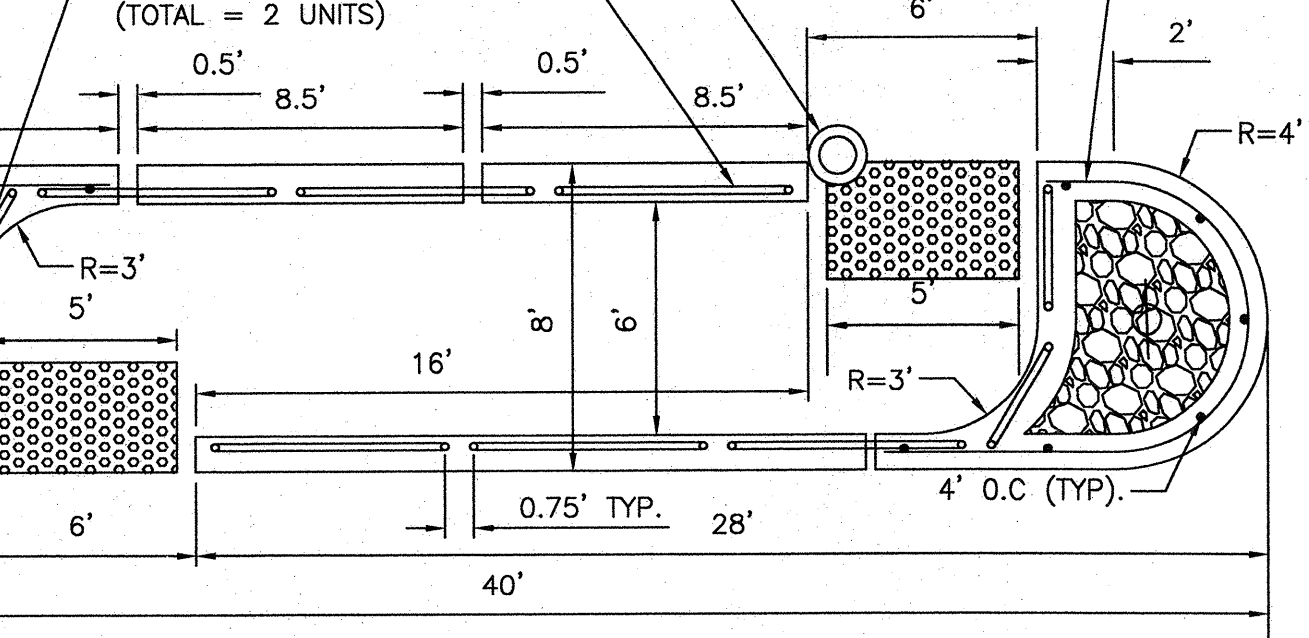
**I POST WITH SLEEVE ANCHORAGE**  
NOT TO SCALE



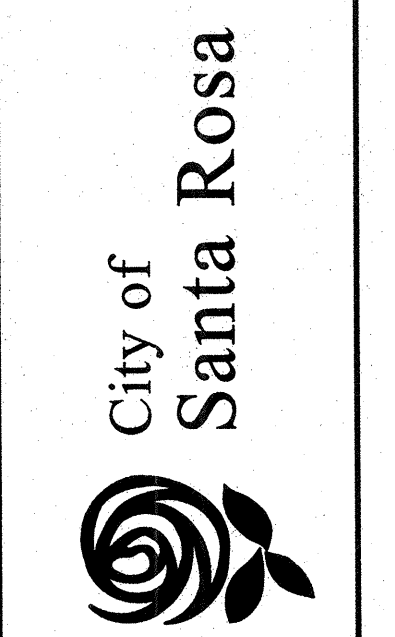
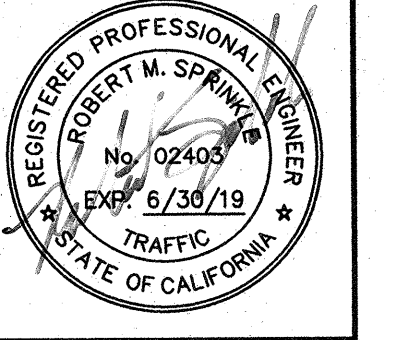
**J PEDESTRIAN ISLAND DETAIL**  
NOT TO SCALE



**K TRENCH DRAIN FRAME & GRATE ISOMETRIC VIEW**  
NOT TO SCALE



**L BARRICADE AND REBAR PLACEMENT DETAIL**  
1"=5'



No.	Date	Revision

DATE: JUNE 1, 2018  
 CHK BY: CCC  
 SCALE: 1" = 10"  
 DWG BY: CCC/CDA  
 APPROVED: Deputy Director - Engineering  
 Lori Urbaneck, PE  
 Date: 6/1/18

CITY OF SANTA ROSA  
 ALDERBROOK DRIVE CROSSING TREATMENT  
 PLAN, LEGEND & DETAILS

CONTRACT NO. C02058  
 SHEET 2 OF 2  
 FILE NO. 2017-0036

V:\02058 - Alderbrook Drive Crossing Treatment\3 dwp\VAL\_ST\_C1.dwg 5-30-18 02:31:29 PM E06184