



CITY OF SANTA ROSA

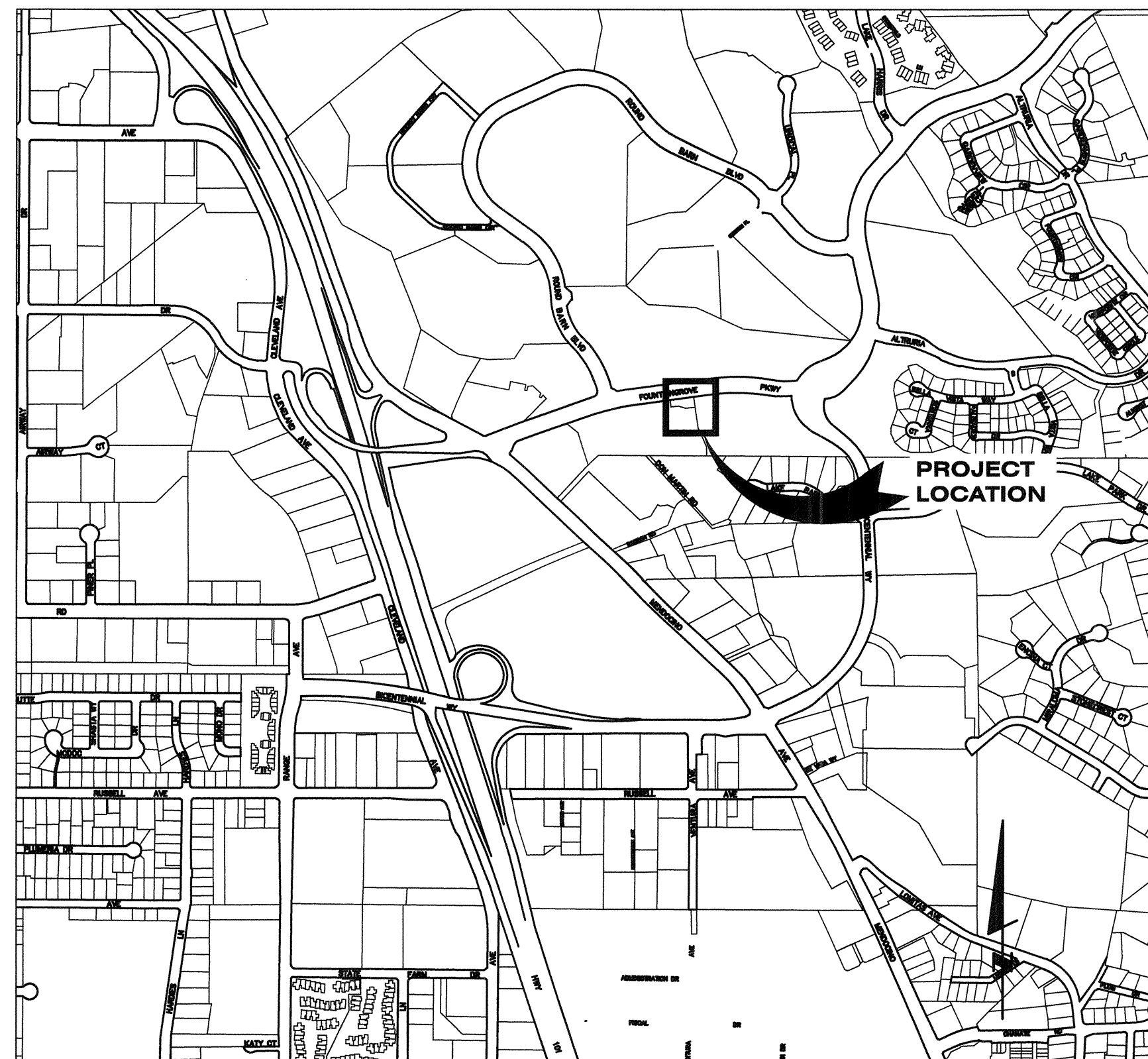
IMPROVEMENT PLANS FOR

WATER PUMP STATION 1 RETAINING WALL IMPROVEMENTS

GENERAL NOTES:

1. ALL WORKMANSHIP, MATERIALS AND CONSTRUCTION SHALL CONFORM TO THE CITY OF SANTA ROSA STANDARD PLANS, THE CONSTRUCTION SPECIFICATIONS FOR PUBLIC IMPROVEMENTS, THE SPECIAL PROVISIONS FOR THIS PROJECT AND THE STATE STANDARD SPECIFICATIONS AND STANDARD PLANS. THE CONTRACTOR IS RESPONSIBLE FOR UNDERSTANDING ALL STANDARDS PERTAINING TO THIS PROJECT.
2. THE CONTRACTOR SHALL CALL UNDERGROUND SERVICE ALERT (USA) NORTH AT 811 NO LESS THAN 2 WORKING DAYS PRIOR TO ANY EXCAVATION FOR MARK OUTS OF EXISTING UNDERGROUND FACILITIES IN ACCORDANCE WITH SECTION 5-1.36E OF THE SPECIAL PROVISIONS.
3. THE LOCATIONS OF UNDERGROUND UTILITIES AND OTHER OBSTACLES SHOWN ON THE PLANS ARE BASED ON THE BEST AVAILABLE INFORMATION. THE CONTRACTOR SHALL POTHOLE AND DETERMINE THE EXACT LOCATION OF ALL POTENTIAL CONFLICTS IN ACCORDANCE WITH U.S.A. LAWS AND THESE SPECIAL PROVISIONS AND THE STANDARD SPECIFICATIONS. IF ANY UNMARKED UTILITIES ARE ENCOUNTERED, OR IF UNABLE TO LOCATE A MARKED UTILITY AFTER POT HOLING, THE CONTRACTOR SHALL IMMEDIATELY NOTIFY THE OWNER OF THAT UTILITY AND THE ENGINEER.
4. ALL SEWER MANHOLES AND WATER VALVES THAT ARE ON ACTIVE SYSTEMS SHALL BE ACCESSIBLE TO CITY PERSONNEL AT ALL TIMES.
5. OVERHEAD UTILITY SERVICE DROPS ARE NOT SHOWN ON THE PLANS. THE CONTRACTOR SHALL INVESTIGATE THE SITE AND BE AWARE OF LIMITED CLEARANCES UNDER OVERHEAD UTILITY LINES AND LOW HANGING TREE BRANCHES. THE CONTRACTOR'S TRUCKS AND EXCAVATION EQUIPMENT SHALL BE SIZED SO THAT OVERHEAD WIRES AND TREE BRANCHES ARE NOT DAMAGED.
6. ALL UNUSED EXCAVATED MATERIAL SHALL BE DISPOSED OF AS GENERATED AND AT NO TIME SHALL THE CONTRACTOR PLACE EXCAVATED MATERIAL FOR REUSE AT THE WORK SITE.
7. THE CONTRACTOR SHALL ONLY REMOVE EXISTING TREES OR SHRUBS AS NOTED ON THE PLANS OR AS DIRECTED BY THE ENGINEER.
8. FOR CLARITY OF EXISTING SUBSURFACE CONDITIONS, NOT ALL EXISTING PAVEMENT MARKINGS ARE SHOWN ON THE PLANS. TRAFFIC STRIPES, RAISED PAVEMENT MARKERS AND PAVEMENT MARKINGS DAMAGED DUE TO THE CONTRACTOR'S OPERATIONS SHALL BE REPLACED PER CITY OF SANTA ROSA TRAFFIC STANDARDS PART III, TRAFFIC MARKINGS. PATCHING OF DAMAGED MARKINGS WILL NOT BE ALLOWED WITHOUT PRIOR APPROVAL FROM THE ENGINEER. ALL DAMAGED RAISED PAVEMENT (NON-REFLECTIVE) MARKERS MUST BE CERAMIC.

CONTRACT No. C02061



LOCATION MAP
NOT TO SCALE

INDEX TO SHEETS

SHEET NO.	TITLE
1.	COVER SHEET
2.	GENERAL NOTES, LEGEND & ABBREVIATIONS
3.	STATEMENT OF SPECIAL INSPECTIONS
4.	GEOTECHNICAL BORING LOGS
5.	SITE ACCESS AND STAGING PLAN
6.	EROSION CONTROL PLAN
7.	SITE IMPROVEMENT PLAN
8.	RETAINING WALL SECTIONS
9.	CIVIL DETAILS

RECORD PLAN DATA	
PROJECT START:	_____
PROJECT END:	_____
GEN. CONTRACTOR:	_____
SUPERINTENDENT:	_____
UNDERGROUND CONTRACTOR:	_____
FOREMAN:	_____
SEWER PIPE TYPE:	_____
MANUFACTURER:	_____
SEWER FITTINGS MANUFACTURER:	_____
M.H. MANUFACTURER:	_____
WATER PIPE TYPE:	_____
MANUFACTURER:	_____
WATER VALVE MANUFACTURER:	_____
WATER FITTINGS MANUFACTURER:	_____
WATER SERVICE TYPE:	_____
MANUFACTURER:	_____
FIRE HYDRANT TYPE:	_____
MANUFACTURER:	_____
INSPECTOR:	_____
CONSTRUCTION MANAGER:	_____
RECORD PLANS BY:	_____
ADDITIONAL INFO:	_____

BEFORE EXCAVATING
CALL U.S.A. NORTH
UNDERGROUND SERVICE ALERT
AT 811
TWO WORKING DAYS BEFORE ALL
PLANNED WORK OPERATIONS

FINAL PAY ITEM(S)
STRUCTURE EXCAVATION, RETAINING WALL 570 CY
STRUCTURE BACKFILL 129 CY

City of Santa Rosa WATER PUMP STATION 1 RETAINING WALL IMPROVEMENTS COVER SHEET	DATE: MARCH, 2023	CHK BY: MKK	DATE: 4-12-23
	DWN BY: DAD	APPROVED: Assistant City Manager JASON NUTI	By: _____
CONTRACT NO. C02061	SHEET 1 OF 9		
FILE NO. 2022-0029			

Design/Const	Signature	Date
Survey	[Signature]	4/14/23
Utilities Op's Traffic	[Signature]	4/15/23
Materials Lab	[Signature]	4/15/23
Storm Water	[Signature]	4/17/23

By	Revision	Date

No.	Date

REGISTERED PROFESSIONAL ENGINEER
STATE OF CALIFORNIA
CIVIL
008804
4/20/23

GENERAL NOTES

- 1. INSPECTIONS SHALL BE PERFORMED BY THE CITY OF SANTA ROSA. REQUESTS FOR INSPECTION SHALL BE MADE A MINIMUM OF 48 HOURS IN ADVANCE OR AS OTHERWISE REQUIRED IN THE SPECIAL PROVISIONS.
2. ALL GRADING AND EXCAVATION ACTIVITIES SHALL BE CONDUCTED IN SUCH A MANNER TO PRECLUDE WIND BLOWN DIRT AND DUST. SUFFICIENT WATERING TO CONTROL DUST IS REQUIRED AT ALL TIMES. THE CONTRACTOR SHALL ASSUME ALL LIABILITY FOR CLAIMS RELATED TO WIND BLOWN MATERIAL. IF DUST CONTROL IS INADEQUATE AS DETERMINED BY THE ENGINEER, THE CONSTRUCTION WORK SHALL BE TERMINATED UNTIL CORRECTIVE MEASURES ARE TAKEN.
3. THE CONTRACTOR IS CAUTIONED THAT THE PLANS MAY NOT INCLUDE ALL EXISTING UTILITIES. POTHOLING SHALL BE DEEMED COMPLETE WHEN CONTRACTOR IDENTIFIES THE UTILITY OR LIMITS OF EXISTING CONCRETE OR CLSM BACKFILL.
4. GROUNDWATER IS NOT ANTICIPATED TO BE ENCOUNTERED DURING THE DRY SEASON. THE CONTRACTOR SHALL ARRANGE FOR THE DISPOSAL OF GROUNDWATER, IF ENCOUNTERED, PER CITY SPECIFICATIONS.
5. THE CONTRACTOR SHALL MAINTAIN ACCESS TO THE PUMP STATION AND ALL DRIVEWAYS DURING CONSTRUCTION PER SECTION 7-1.08 AND 7-1.09 OF THE STATE STANDARD SPECIFICATIONS.
6. OVERHEAD AND UNDERGROUND ELECTRICAL POWER IS PRESENT IN THE VICINITY OF THE WORK AREA. CONTRACTOR SHALL EXERCISE EXTREME CARE WHEN CONDUCTING WORK IN THE VICINITY OF THESE ELECTRICAL FACILITIES.
7. SIGNAGE SHALL BE CONSTRUCTED WITH RETROREFLECTIVE MATERIAL ON A BACKING OF METAL OR FABRIC. SIGNS SHALL BE REMOVED OR COVERED WHEN NOT REQUIRED.
8. THE CONTRACTOR SHALL EXERCISE CAUTION WHEN DIGGING WITHIN THE DRIPLINE OF TREES DESIGNATED TO REMAIN. ROOTS LARGER THAN 2 INCHES SHALL NOT BE CUT WITHOUT PERMISSION FROM THE ENGINEER. IN THE EVENT THAT A ROOT IS LARGER THAN 2 INCHES, SEEK DIRECTION FROM THE ENGINEER.
9. ANY DISCREPANCY DISCOVERED BY CONTRACTOR IN THESE PLANS OR ANY FIELD CONDITIONS DISCOVERED BY CONTRACTOR THAT MAY DELAY OR OBSTRUCT THE PROPER COMPLETION OF THE WORK PER THESE PLANS SHALL BE BROUGHT TO THE ATTENTION OF THE ENGINEER IMMEDIATELY UPON DISCOVERY. SAID NOTIFICATION SHALL BE IN WRITING, AND SHALL OCCUR FAR ENOUGH IN ADVANCE OF WORK SO THAT THE CONSTRUCTION SCHEDULE WILL NOT BE AFFECTED SHOULD THE RELOCATION OR MOVING OF AN EXISTING UTILITY BE REQUIRED.
10. EXCAVATED MATERIAL SHALL NOT BE PLACED DIRECTLY ON ANY STREET AT ANY TIME UNLESS APPROVED BY THE ENGINEER. IF SO APPROVED, THE AREA WHERE THE MATERIAL IS PLACED MUST BE COMPLETELY CLEANED BY THE END OF THE WORK DAY OR AS REQUESTED BY THE ENGINEER.
11. CONTRACTOR SHALL CONFORM GRADING AND FILL TO SURROUNDING LANDSCAPE, AND OTHER IMPROVEMENTS WITH A SMOOTH TRANSITION AND TO AVOID ABRUPT OR APPARENT CHANGES IN GRADE OR CROSS SLOPE, LOW SPOTS OR POTENTIALLY HAZARDOUS CONDITIONS.
12. THE SITE SHALL BE VISUALLY INSPECTED BY THE CONTRACTOR TO CONFIRM THE EXTENT OF CLEARING, GRUBBING AND GRADING WORK TO BE DONE.
13. UNSUITABLE MATERIAL SHALL BE REMOVED FROM THE SITE AND DISPOSED OF IN A MANNER CONSISTENT WITH APPLICABLE REGULATIONS. CONTRACTOR IS RESPONSIBLE FOR LEGAL DISPOSAL OF MATERIALS TAKEN FROM SITE.
14. COVER ALL TRUCKS HAULING SOIL, SAND, AND OTHER LOOSE MATERIALS.
15. TRACKING MUD OR DIRT OUT ON TO ADJACENT PUBLIC ROADS IS PROHIBITED. ANY MUD OR DIRT TRACKED ON TO PUBLIC ROADS SHALL BE IMMEDIATELY REMOVED USING WET POWER VACUUM STREET. THE USE OF DRY POWER SWEEPING IS PROHIBITED.
16. LIMIT TRAFFIC SPEEDS ON UNPAVED ACCESS TO 5 MPH.
17. IDLING TIMES SHALL BE MINIMIZED EITHER BY SHUTTING EQUIPMENT OFF WHEN NOT IN USE OR REDUCING THE MAXIMUM IDLING TIME TO FIVE MINUTES (AS REQUIRED BY THE CALIFORNIA AIRBORNE TOXICS CONTROL MEASURE TITLE 13, SECTION 2484 OF THE CCR). CLEAR SIGNAGE SHALL BE PROVIDED FOR CONSTRUCTION WORKERS AT ALL ACCESS POINTS.
18. NO CONSTRUCTION SHALL COMMENCE WITHOUT PRIOR APPROVAL OF THE CITY ENGINEER.
19. ALL DISTANCES SHOWN ON THE DRAWINGS ARE BASED ON HORIZONTAL AND VERTICAL MEASUREMENTS.
20. WHERE NO CONSTRUCTION DETAILS ARE SHOWN OR NOTED FOR ANY PART OF WORK, DETAILS SHALL BE THE SAME AS FOR OTHER SIMILAR WORK.
21. SEE STATE STANDARD PLANS A10A, A10B, A10C AND A10D FOR SYMBOLS AND ABBREVIATIONS NOT SHOWN.

EROSION AND SEDIMENT CONTROL NOTES

- 1. PERFORM EROSION PREVENTION AND SEDIMENT CONTROL IN ACCORDANCE WITH THE LATEST EDITION OF CHAPTER 33 OF THE CALIFORNIA BUILDING CODE, APPLICABLE SONOMA COUNTY AND CITY OF SANTA ROSA REGULATIONS, AND SECTION 13 OF THE CALTRANS STANDARD SPECIFICATIONS.
2. PROJECT IMPLEMENTATION SHALL CONFORM WITH THE EROSION PREVENTION AND SEDIMENT CONTROL BEST MANAGEMENT PRACTICES CONTAINED IN THE LATEST EDITIONS OF THE FOLLOWING PUBLICATIONS OR AN EQUIVALENT BEST MANAGEMENT PRACTICE: EROSION AND SEDIMENT CONTROL FIELD MANUAL BY THE SAN FRANCISCO BAY REGIONAL WATER QUALITY CONTROL BOARD/MANUAL OF STANDARDS FOR EROSION & SEDIMENT CONTROL MEASURES BY THE ASSOCIATION OF BAY AREA GOVERNMENTS. CONSTRUCTION SITE BEST MANAGEMENT PRACTICES MANUAL BY CALTRANS. STORMWATER BEST MANAGEMENT PRACTICE HANDBOOK BY THE CALIFORNIA STORMWATER QUALITY ASSOCIATION.
3. IF DISCREPANCIES OCCUR BETWEEN THESE NOTES, MATERIAL REFERENCED HEREIN OR MANUFACTURER'S RECOMMENDATIONS, THEN THE MOST PROTECTIVE SHALL APPLY.
4. THE CONTRACTOR IS RESPONSIBLE FOR COMPLYING WITH THE REGIONAL WATER QUALITY CONTROL BOARD REQUIREMENTS FOR DISCHARGES OF STORM WATER RUNOFF ASSOCIATED WITH CONSTRUCTION ACTIVITY. THIS PROJECT DISTURBANCE IS LESS THAN 1-ACRE, THEREFORE A SWPPP IS NOT REQUIRED FOR THIS PROJECT.
5. PRESERVATION OF EXISTING VEGETATION SHALL OCCUR TO THE MAXIMUM EXTENT PRACTICABLE.
6. THE CONTRACTOR IS RESPONSIBLE FOR PREVENTING STORM WATER POLLUTION FROM LEAVING THE CONSTRUCTION SITE YEAR ROUND. THE CONTRACTOR MUST IMPLEMENT AN EFFECTIVE COMBINATION OF EROSION PREVENTION AND SEDIMENT CONTROL MEASURES ON ALL DISTURBED AREAS DURING THE RAINY SEASON (OCTOBER 15 - APRIL 15).
7. EROSION PREVENTION AND SEDIMENT CONTROL MEASURES SHALL BE INSPECTED BEFORE FORECASTED STORM EVENTS AND AFTER ACTUAL STORM EVENTS TO ENSURE MEASURES ARE FUNCTIONING PROPERLY. EROSION PREVENTION AND SEDIMENT CONTROL MEASURES THAT HAVE FAILED OR ARE NO LONGER EFFECTIVE SHALL BE PROMPTLY REPAIRED OR REPLACED. EROSION PREVENTION AND SEDIMENT CONTROL MEASURES SHALL BE MAINTAINED UNTIL DISTURBED AREAS ARE STABILIZED.
8. CHANGES TO THE EROSION PREVENTION AND SEDIMENT CONTROL PLAN MAY BE MADE TO RESPOND TO FIELD CONDITIONS. CHANGES SHALL BE NOTED ON THE PLAN WHEN MADE.
9. DISCHARGES OF POTENTIAL POLLUTANTS FROM CONSTRUCTION SITES SHALL BE PREVENTED USING SOURCE CONTROLS TO THE MAXIMUM EXTENT PRACTICABLE. POTENTIAL POLLUTANTS INCLUDE BUT ARE NOT LIMITED TO: SEDIMENT, TRASH, NUTRIENTS, PATHOGENS, PETROLEUM HYDROCARBONS, METALS, CONCRETE, CEMENT, ASPHALT, LIME, PAINT, STAINS, GLUES, WOOD PRODUCTS, PESTICIDES, HERBICIDES, CHEMICALS, HAZARDOUS WASTE, SANITARY WASTE, VEHICLE OR EQUIPMENT WASH WATER AND CHLORINATED WATER.
10. ENTRANCE(S) TO THE CONSTRUCTION SITE SHALL BE MAINTAINED IN A CONDITION THAT WILL PREVENT TRACKING OR FLOWING OF POTENTIAL POLLUTANTS OFFSITE. POTENTIAL POLLUTANTS DEPOSITED ON PAVED AREAS WITHIN THE COUNTY RIGHT-OF-WAY, SUCH AS ROADWAYS AND SIDEWALKS, SHALL BE PROPERLY DISPOSED OF AT THE END OF EACH WORKING DAY OR MORE FREQUENTLY AS NECESSARY.
11. EXPOSED SOILS SHALL BE PROTECTED BY USING EROSION PREVENTION MEASURES TO THE MAXIMUM EXTENT PRACTICABLE SUCH AS ESTABLISHING 70% VEGETATION COVERAGE, HYDROSEEDING, STRAW MULCH, GEOTEXTILES, PLASTIC COVERS, BLANKETS OR MATS.
12. WHENEVER IT IS NOT POSSIBLE TO UTILIZE EROSION PREVENTION MEASURES, CONTRACTOR SHALL EMPLOY SEDIMENT CONTROL DEVICES, SUCH AS FIBER ROLLS AND SILT FENCES. FIBER ROLLS AND SILT FENCES SHALL BE TRENCHED AND KEYED INTO THE SOIL AND INSTALLED ON CONTOUR. SILT FENCES SHALL BE INSTALLED APPROXIMATELY 2 FEET FROM TOE OF SLOPE.
13. THE CONTRACTOR SHALL PROTECT STORM DRAIN INLETS FROM POTENTIAL POLLUTANTS UNTIL DRAINAGE CONVEYANCE SYSTEMS ARE FUNCTIONAL, THE SITE IS STABILIZED, AND CONSTRUCTION HAS BEEN COMPLETED.
14. SOIL AND MATERIAL STOCKPILES SHALL BE PROPERLY PROTECTED TO MINIMIZE SEDIMENT AND POLLUTANT TRANSPORT FROM THE CONSTRUCTION SITE.
15. SOLID WASTE, SUCH AS TRASH, DISCARDED BUILDING MATERIALS AND DEBRIS, SHALL BE PLACED IN DESIGNATED COLLECTION AREAS OR CONTAINERS. THE CONSTRUCTION SITE SHALL BE CLEARED OF SOLID WASTE DAILY, OR AS NECESSARY, AND REGULAR REMOVAL AND PROPER DISPOSAL SHALL BE ARRANGED.
16. THE LOCATION OF A CONCRETE WASHOUT AREA, IF NEEDED BY THE CONTRACTOR, SHALL BE APPROVED BY THE ENGINEER AND DESIGNATED TO CLEAN CONCRETE TRUCKS AND TOOLS. AT NO TIME SHALL CONCRETE PRODUCTS AND WASTE BE ALLOWED TO ENTER WATERWAYS SUCH AS CREEKS OR STORM DRAINS.
17. PROPER APPLICATION, CLEANING AND STORAGE OF POTENTIALLY HAZARDOUS MATERIALS, SUCH AS PAINTS AND CHEMICALS, SHALL BE CONDUCTED TO PREVENT THE DISCHARGE OF POLLUTANTS.
18. WHEN UTILIZED, TEMPORARY RESTROOMS AND SANITARY FACILITIES SHALL BE LOCATED IN A LOCATION APPROVED BY THE ENGINEER AND MAINTAINED TO PREVENT THE DISCHARGE OF POLLUTANTS.
19. APPROPRIATE VEHICLE STORAGE, FUELING, MAINTENANCE AND CLEANING AREAS SHALL BE DESIGNATED SUBJECT FOR APPROVAL BY THE ENGINEER AND MAINTAINED TO PREVENT DISCHARGE OF POLLUTANTS.

SURVEY CONTROL POINTS

Table with 5 columns: POINT #, NORTHING, EASTING, ELEVATION, DESCRIPTION. Contains 6 rows of survey data including points 3, 4, 5, 89, and 90.

- 1. FIELD SURVEY WAS COMPLETED BY CITY OF SANTA ROSA ON DECEMBER 6, 2021.
2. ALL COORDINATES ARE TIED TO THE CITY OF SANTA ROSA'S HORIZONTAL CONTROL NETWORK, WHICH IS BASED ON NAD 83, EPOCH 2010.00. VERTICAL CONTROL OF THIS PROJECT IS BASED UPON THE FOLLOWING:
- NORTH AMERICAN VERTICAL DATUM OF 1988 (NAVD 88).
- CONTROL POINT ELEVATIONS WERE DETERMINED BY A DIFFERENTIAL LEVELING LOOP FROM EXISTING PROJECT CONTROL POINT #89, ELEVATION = 224.46'.
3. ALL ELEVATION INFORMATION IS IN FEET.

BASIS OF BEARING

- 1. SOUTH 42° 17' 03" WEST BETWEEN CITY OF SANTA ROSA HORIZONTAL CONTROL NETWORK COORDINATE MONUMENTS G-475 & G-1004. NAD83 - ZONE 2 - EPOCH 2010.00.

LEGEND

Legend section containing symbols and descriptions for various features: APPROXIMATE PARCEL BOUNDARY, TEMPORARY EASEMENT LINE, CONTRACTOR ACCESS, MINOR CONTOUR, MAJOR CONTOUR, (E) CHAIN LINK FENCE, (E) STORM DRAIN, (E) 1" WATER SERVICE WITH (E) METER BOX, (E) WATER MAIN, (E) SANITARY SEWER, (E) SEWER LATERAL AND CLEANOUT, (E) PG&E GAS LINE, (E) PG&E ELECTRICAL LINE, (E) OVERHEAD COMMUNICATIONS LINE, (E) TELEPHONE OR COMMUNICATIONS LINE, (E) WATER MAIN, GATE VALVE AND TEE, (E) SEWER MAIN, MANHOLE AND CLEANOUT, (E) GATE VALVE, (E) GAS VALVE, SET CUT X SURVEY MONUMENT, BRASS DISK SURVEY MONUMENT, SURVEY CONTROL POINT, (E) CITY MONUMENT, GEOTECHNICAL BORINGS, (E) STORM DRAIN MANHOLE, (E) TREE, (E) TREE STUMP, (E) HMA / AC PAVEMENT, (E) CONCRETE, (E) ROCK WALL, (E) GRAVEL SURFACE.

SURVEY NOTES

- 1. ALL UTILITY STRUCTURES IDENTIFIED BY SURFACE LABELS - NO UTILITY STRUCTURES OPENED TO CONFIRM INTERIOR CONTENTS.
2. NO SANITARY SEWER & STORM DRAIN STRUCTURE INVERT ELEVATIONS HAVE BEEN MEASURED.
3. 1-1/2" DIA. STEEL GAS LINE RUNS FROM: PROPANE TANK ALONG FACE OF CONCRETE WALL, CONTINUING ALONG SAID FACE OF WALL BEHIND AT&T STRUCTURE TO WEST WALL OF PUMP STATION, THENCE ALONG SAID WEST WALL TO GAS METER.
4. 2-1/2" DIA. PVC TELEMETRY CONDUIT RUNS FROM: ANTENNA TO CONTROL BOX ON FACE OF CONCRETE WALL, TO SOUTHWEST CORNER OF PUMP STATION ROOF, THENCE ALONG SOUTH EDGE OF ROOF TO WITHIN 8 FEET OF SOUTHWEST CORNER OF ROOF.
5. SURVEY WAS PERFORMED BY THE CITY OF SANTA ROSA.

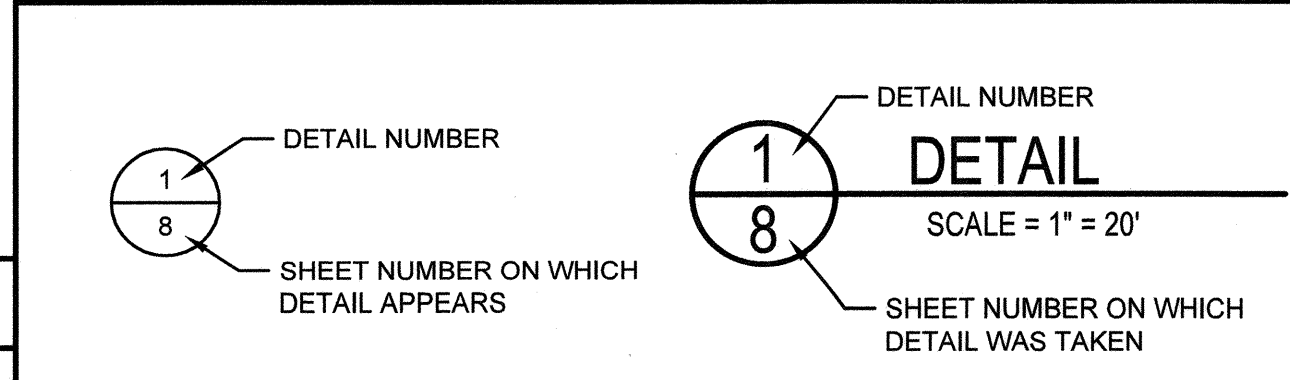
BENCHMARK

- 1. CITY OF SANTA ROSA CONTROL POINT NUMBER 89 AS SHOWN HEREON, BEING A FOUND 1/2" IRON PIPE IN AC, TAG ILLEGIBLE. ELEV = 224.46'
2. ELEVATIONS ARE DERIVED FROM STATIC OCCUPATIONS OF THE PRIMARY AZIMUTH PAIRS FOR THE PROJECT SITES ON OCTOBER 26-27, 2018, PURSUANT TO PROJECT 02208 CITY OF SANTA ROSA SURVEY FIELD BOOK 185-A1. GPS ORTHOMETRIC ELEVATIONS WERE DETERMINED FROM TIES TO COORS STATION "CASR" WITH A N.G.S. PUBLISHED ELLIPSOID HEIGHT OF 39.275' (11.971 METERS). [ELEVATION NOTE PER PROJECT 02256 CITY OF SANTA ROSA SURVEY FIELD BOOK 187-A1, DRAWING "02256 BACKUP GENERATORS S1-S17-S18".]

ABBREVIATIONS

Table with 4 columns: Symbol, Abbreviation, Description, and Note. Lists various abbreviations such as @ AT, AB ABANDONED, AC ASPHALT CONCRETE, ACP ASBESTOS CEMENT, AGG AGGREGATE, APN ASSESSORS PARCEL NUMBER, ARV AIR RELEASE/VACUUM VALVE, AVE AVENUE, BC BEGINNING OF CURVE, BLDG BUILDING, BO BLOW-OFF, BSW BACK OF SIDEWALK, BVCS BEGIN VERTICAL CURVE ELEVATION, BVCS BEGIN VERTICAL CURVE STATION, COM COMMUNICATION, C&G CURB & GUTTER, CATV CABLE TELEVISION, CB CATCH BASIN, CDF CONTROL DENSITY FILL, CL CENTERLINE, CLR CLASS, CLSM CLEAR, CO, C/O CLEANOUT COLUMN, COL COLUMN, CONC CONCRETE, CONT CONTINUOUS, CT COURT, D DEMOLISH, DBL DOUBLE, DEPT DEPARTMENT, DI DROP INLET, DIA, Ø DIAMETER, DIP DUCTILE IRON PIPE, DWG DRAWING, DWY DRIVEWAY, (E) EAST, EXISTING, E ELECTRICAL, EC END OF CURVE, ELEC ELECTRIC, EG EXISTING GRADE, EJ EXPANSION JOINT, EL, ELEV ELEVATION, EP EDGE OF PAVEMENT, EQ EQUAL, EVCE END VERTICAL CURVE ELEVATION, EVCS END VERTICAL CURVE STATION, EX, EXIST EXISTING, E.V. EACH WAY, FC FACE OF CURB, FCA FLANGE COUPLING ADAPTER, FEN FENCE, FG FINISH GRADE (UNPAVED), FH FIRE HYDRANT, FL FLOWLINE, F/FLG FACE OF, FLANGE, FND FOUNDATION, FS FINISHED SURFACE (AC OR CONCRETE), FTG FOOTING, G GAS, GB GRADE BREAK, GV GATE VALVE, HDPE HIGH DENSITY POLYETHYLENE, HMA HOT MIX ASPHALT, HP HIGH PRESSURE, HORIZ HORIZONTAL, IC INTERCONNECT, INV INVERT, IRR IRRIGATION, KVO KILOVOLT, L LENGTH, LF LINEAR FEET, LG LIP OF GUTTER, LN LANE, LT LEFT OFFSET FROM CENTERLINE, MAX MAXIMUM, MB MAILBOX, ME MATCH EXISTING, MH MANHOLE, MI MILE, MIN MINIMUM, MON MONUMENT, MUTCD MANUAL ON UNIFORM TRAFFIC CONTROL DEVICES.

SYMBOLS



SECTION IDENTIFICATION

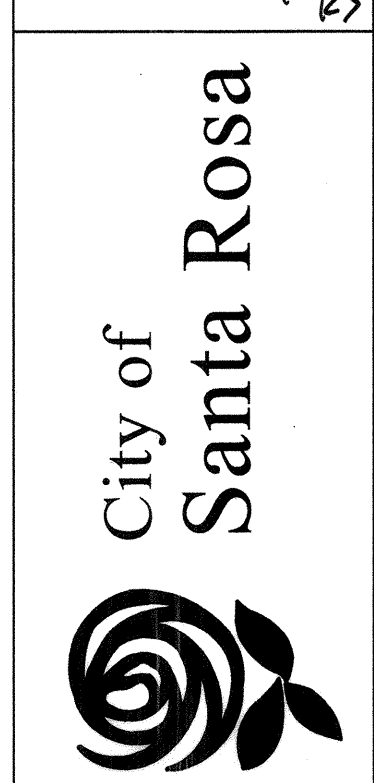
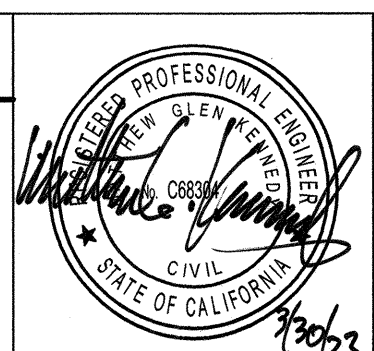
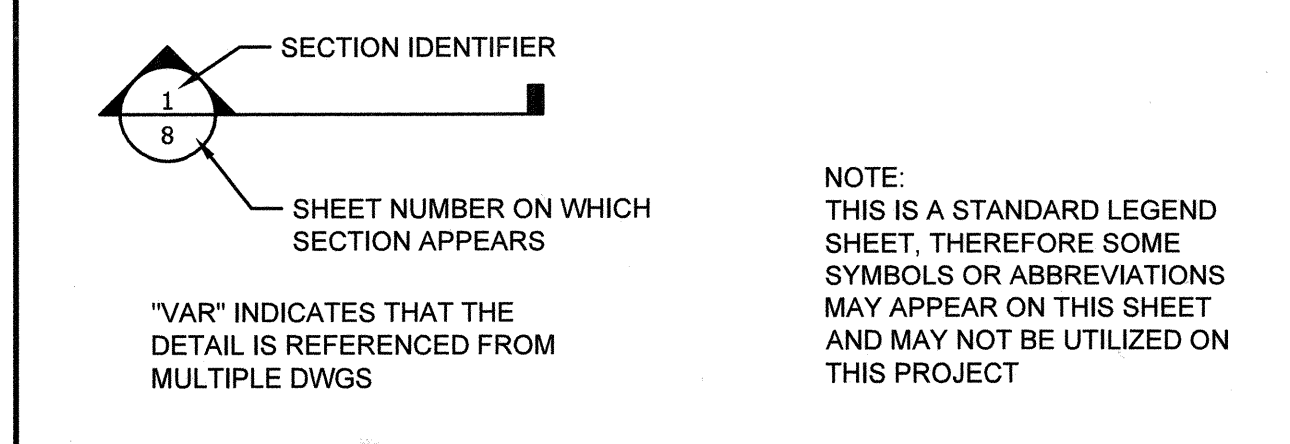
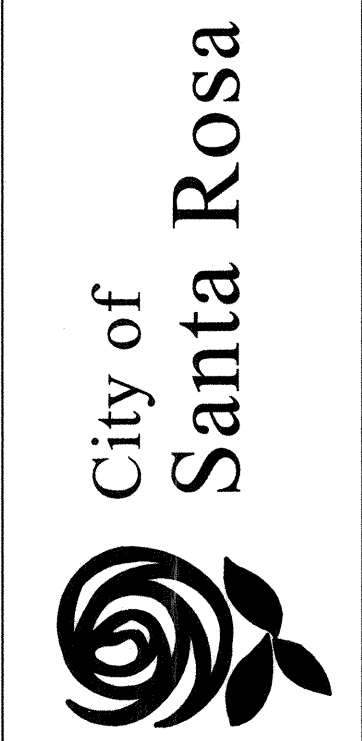
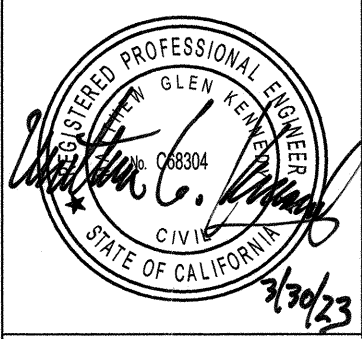


Table with 4 columns: NO., DATE, MKG, BY. Contains revision information for the drawing.

Table with 4 columns: SCALE, DATE, CHK BY, DWN BY. Contains drawing metadata.

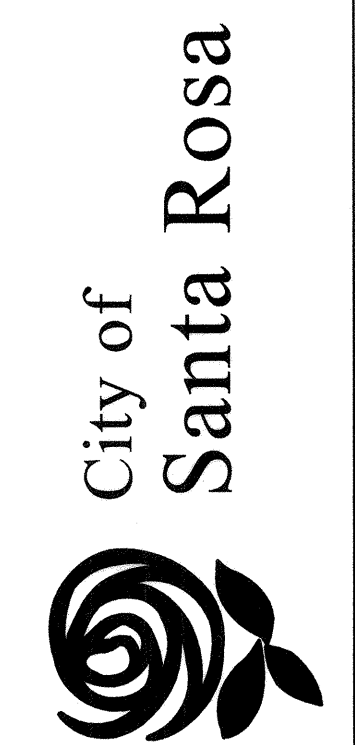
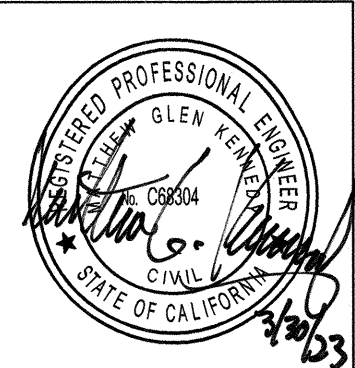
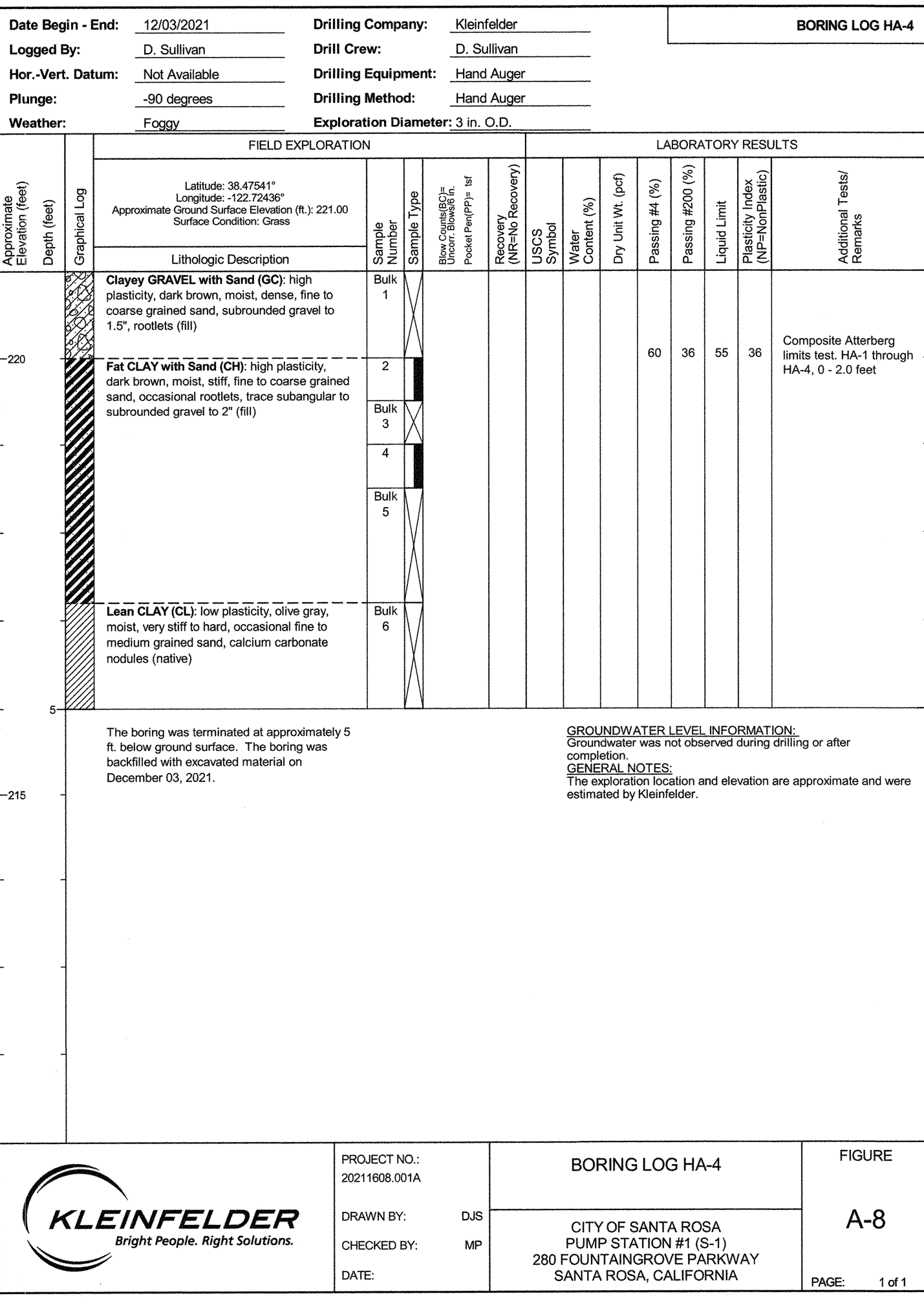
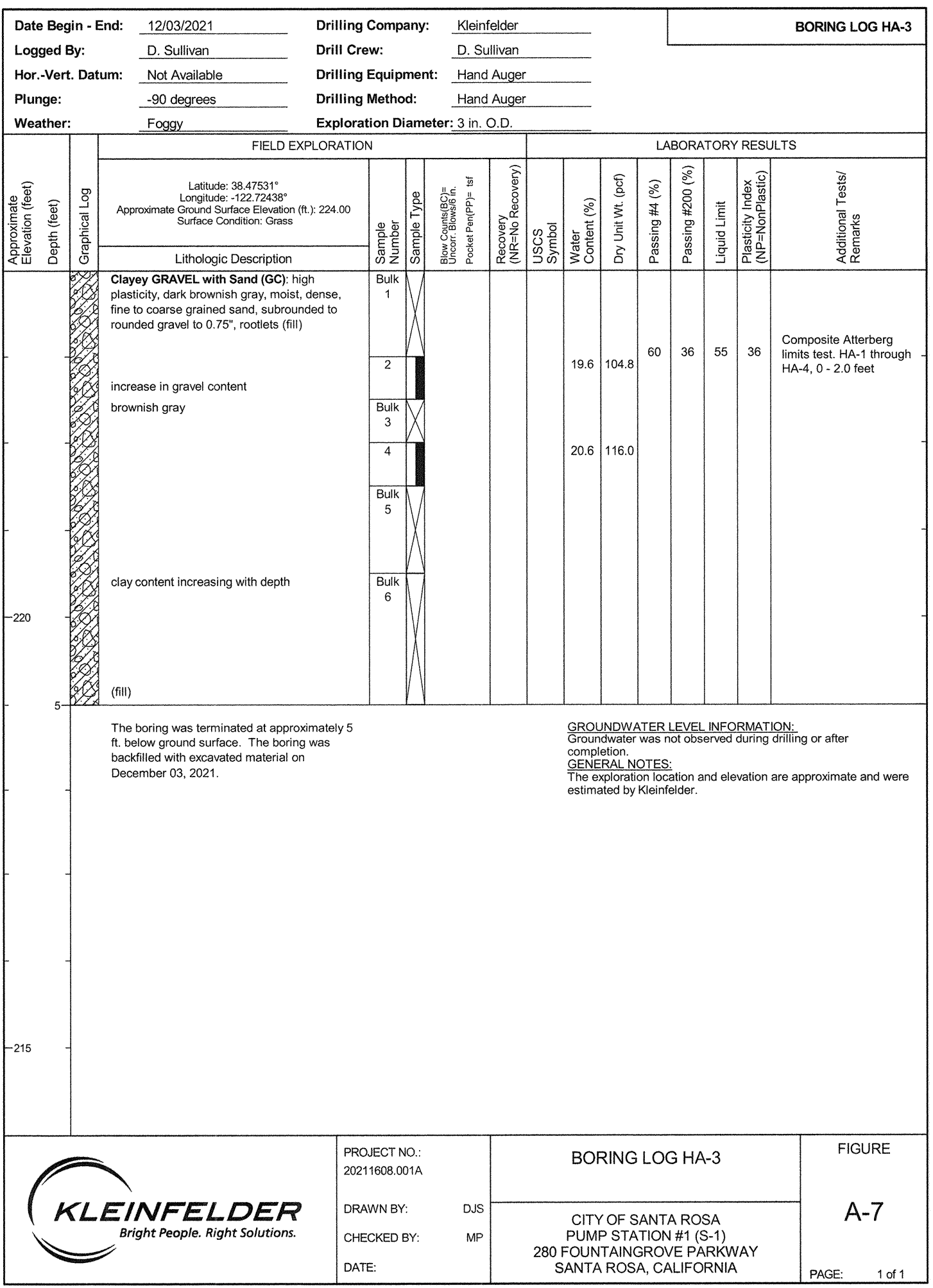
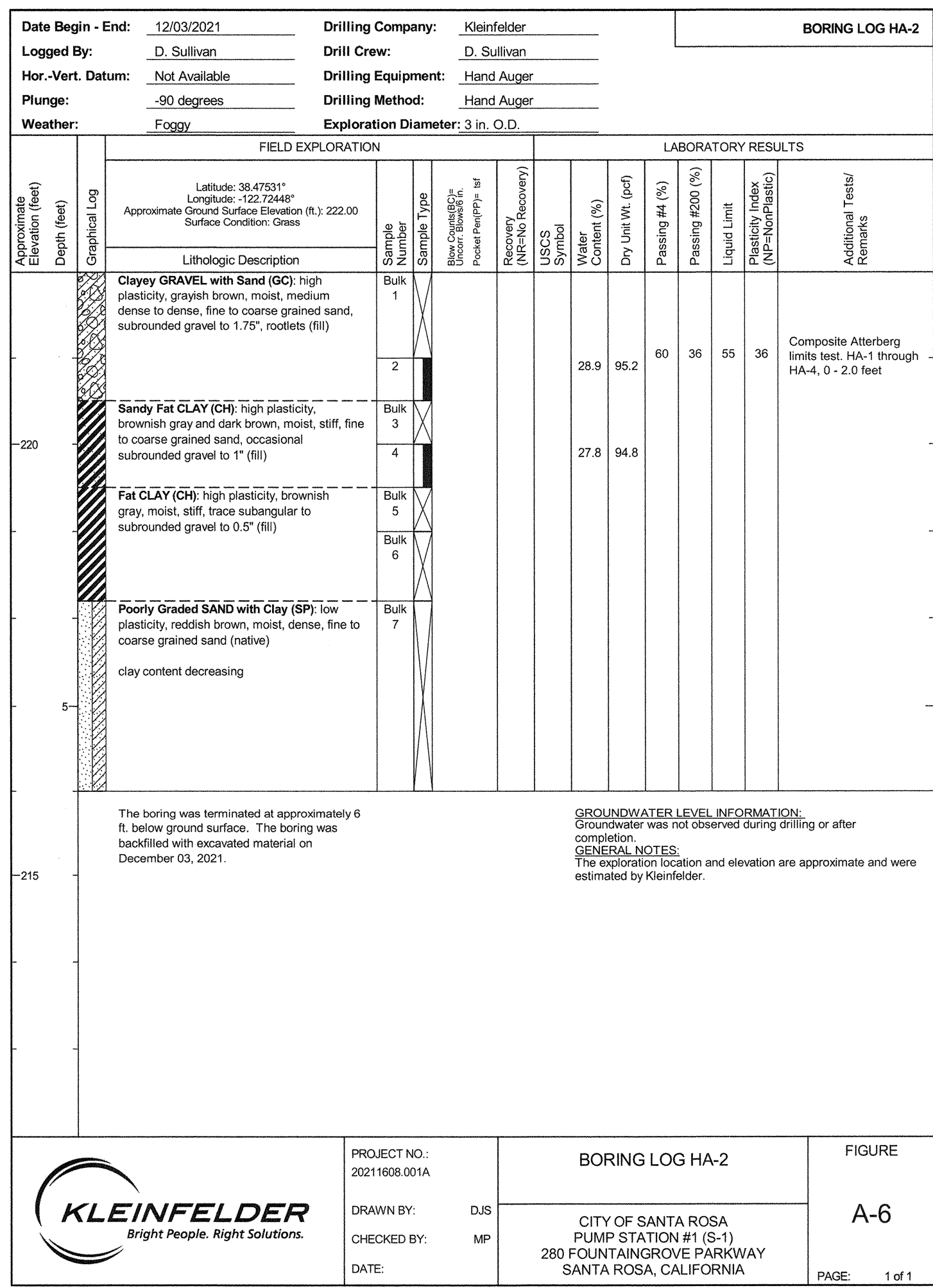
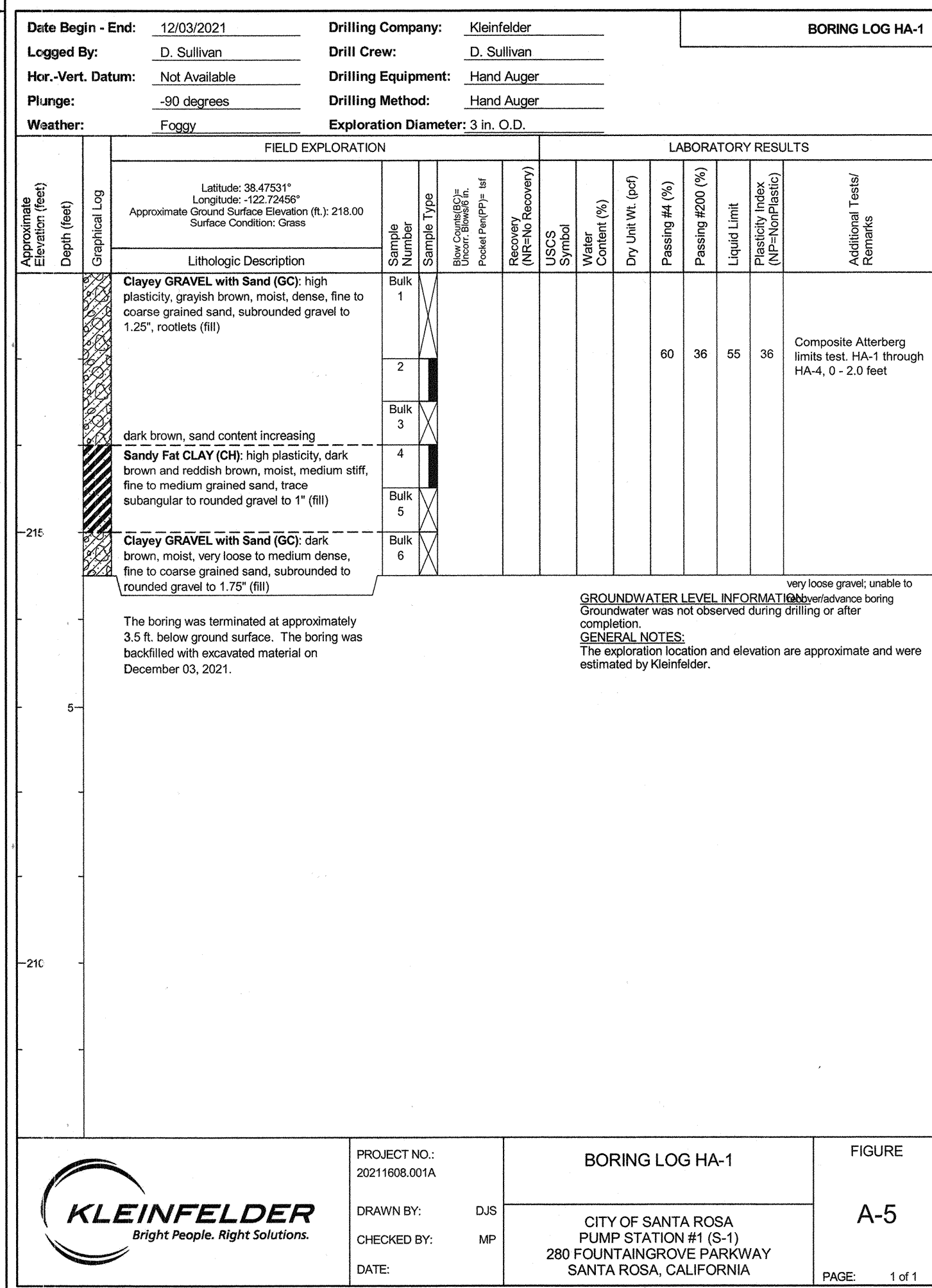
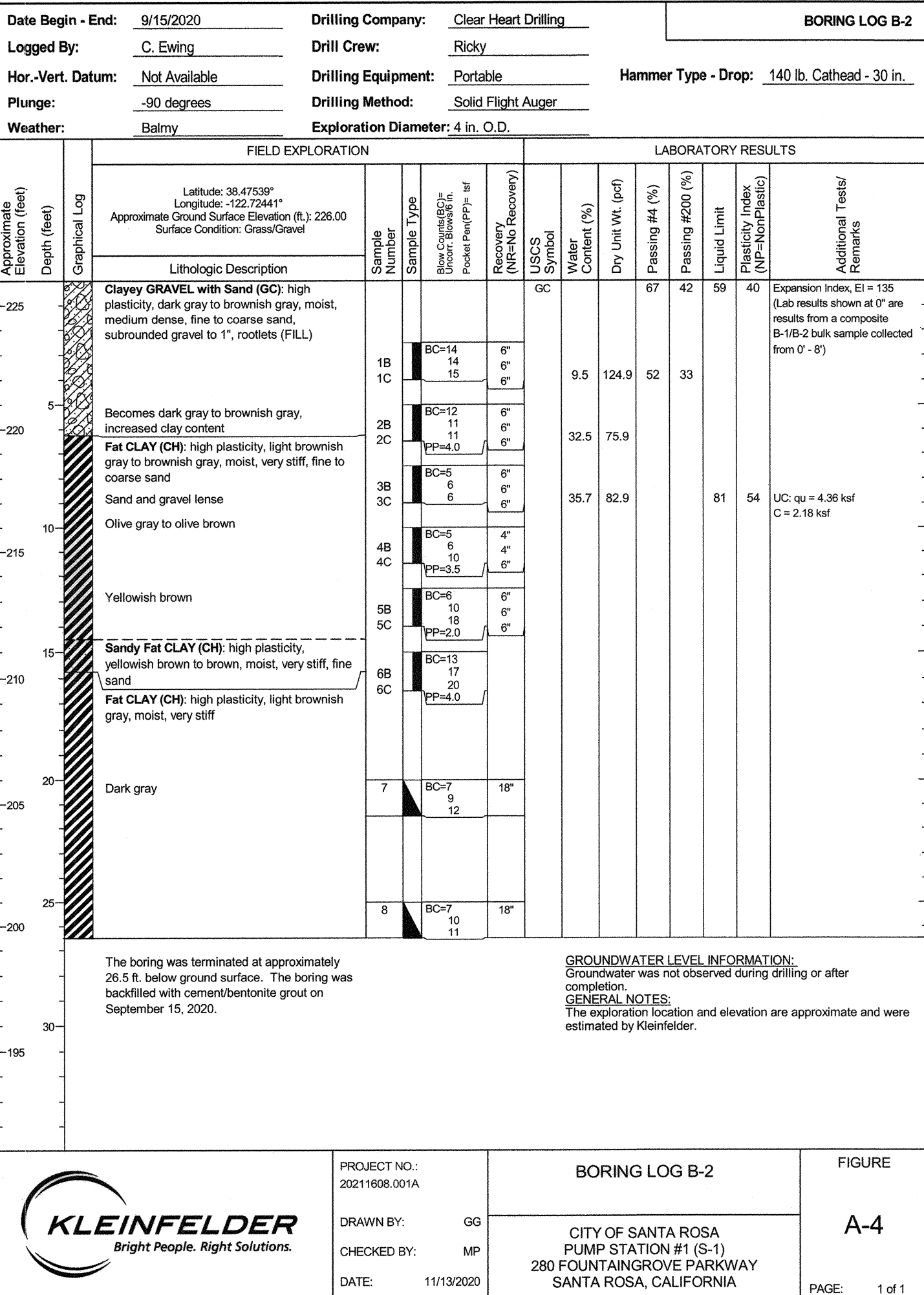
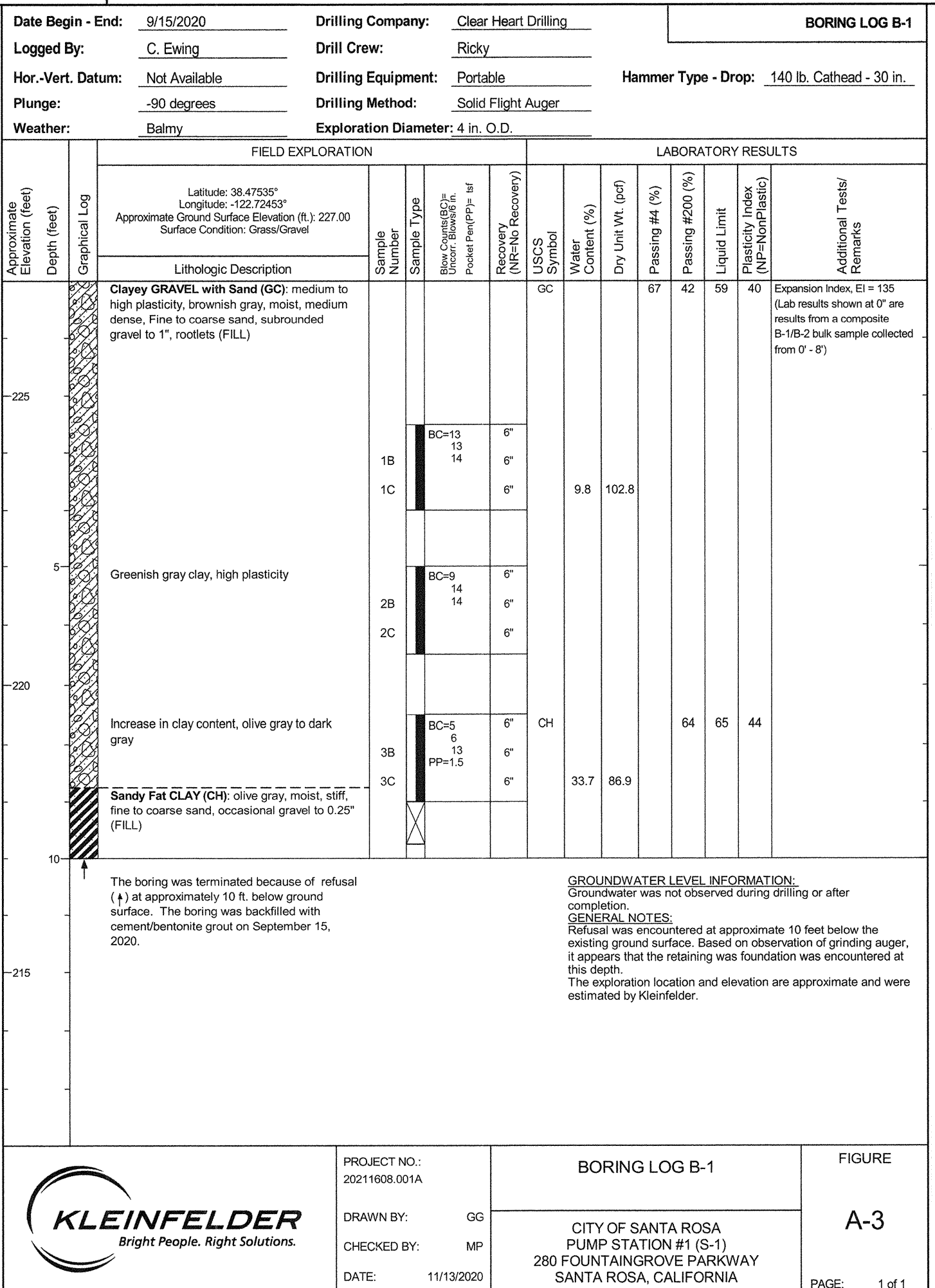
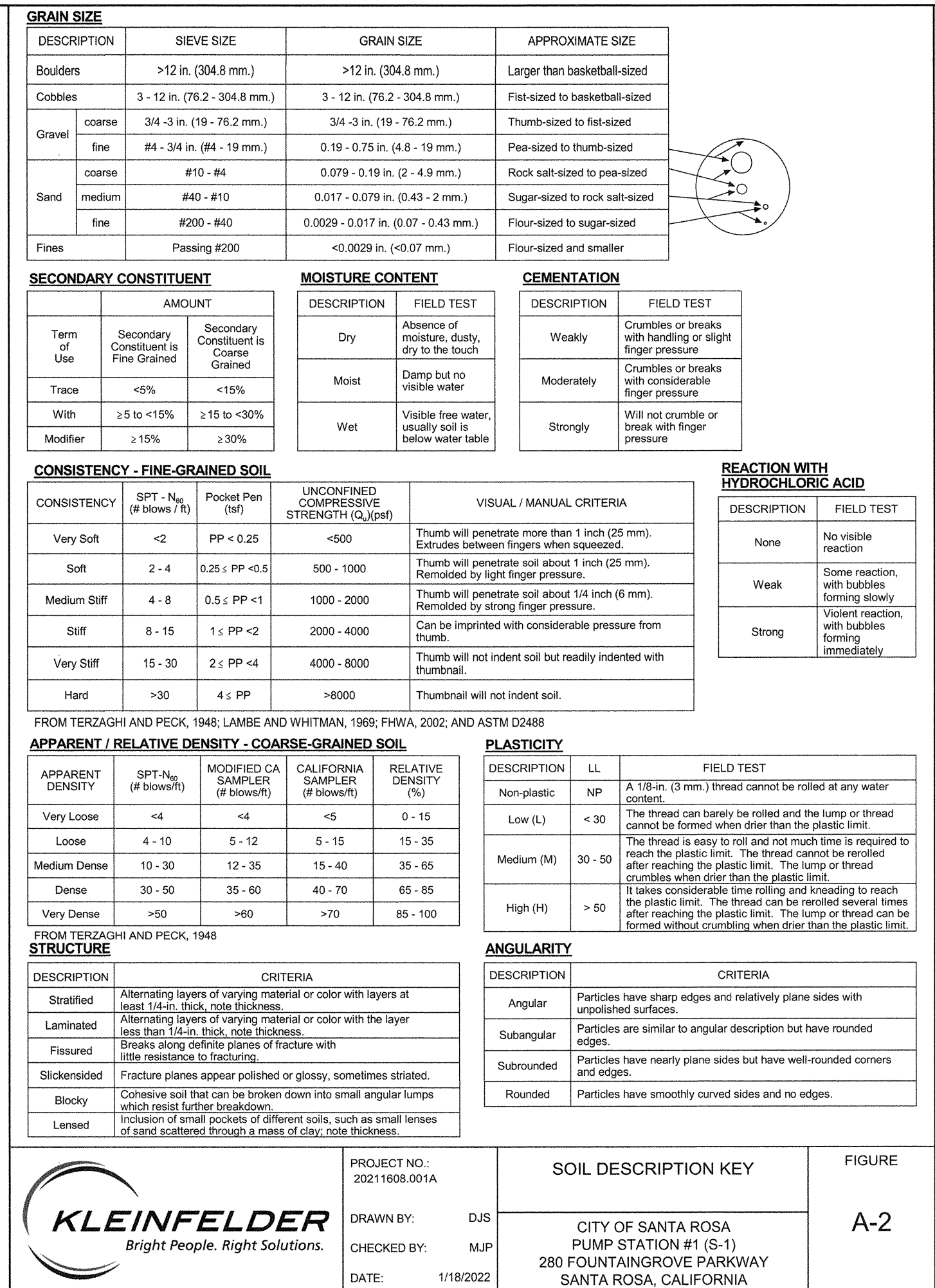
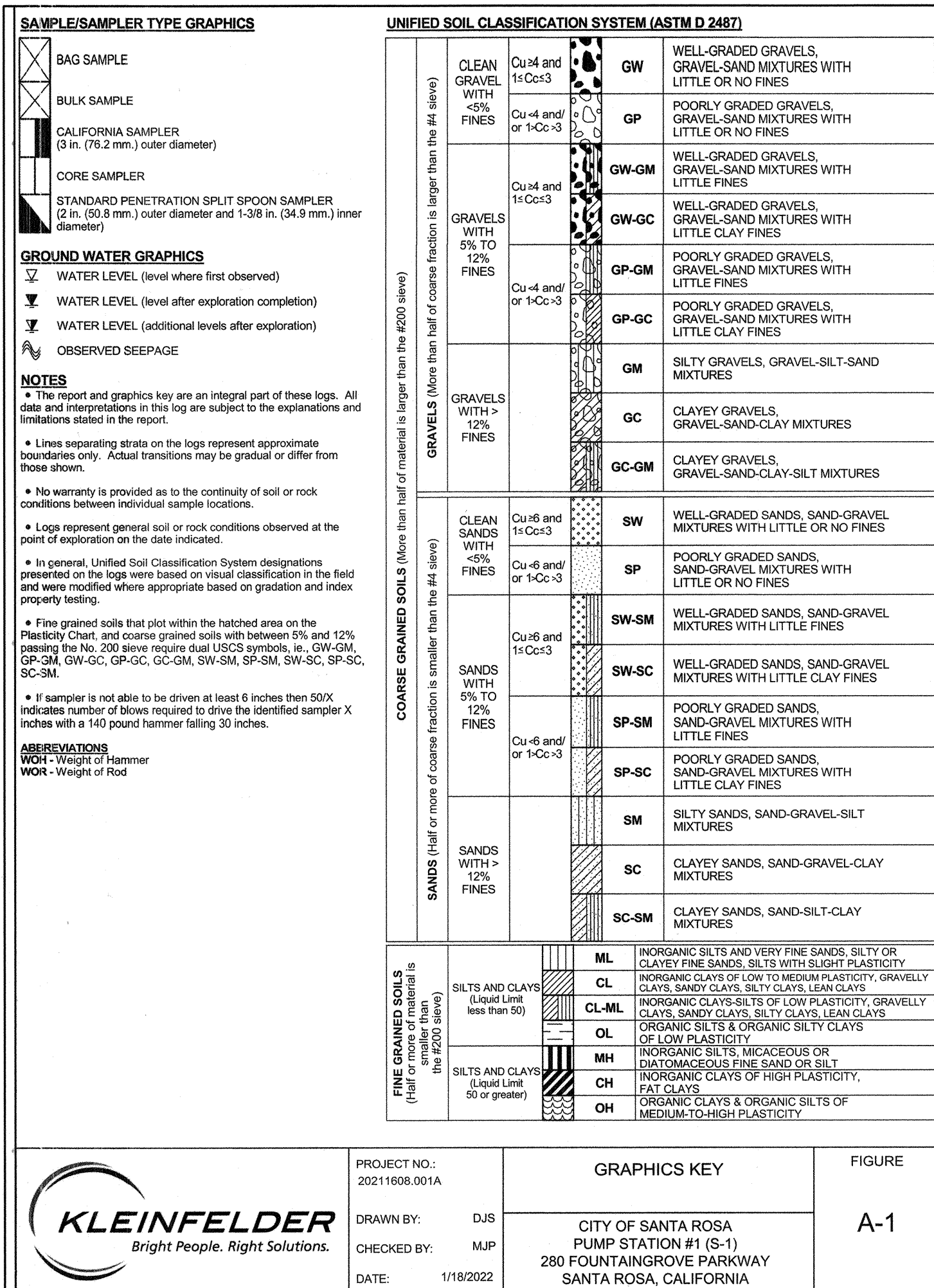


NO.	DATE	REVISION	BY

SCALE: NOT TO SCALE	DATE: MARCH, 2023
DWN BY: DAD	CHK BY: MGK

CITY OF SANTA ROSA
**WATER PUMP STATION 1
 RETAINING WALL IMPROVEMENTS**
**STATEMENT OF SPECIAL
 INSPECTIONS**

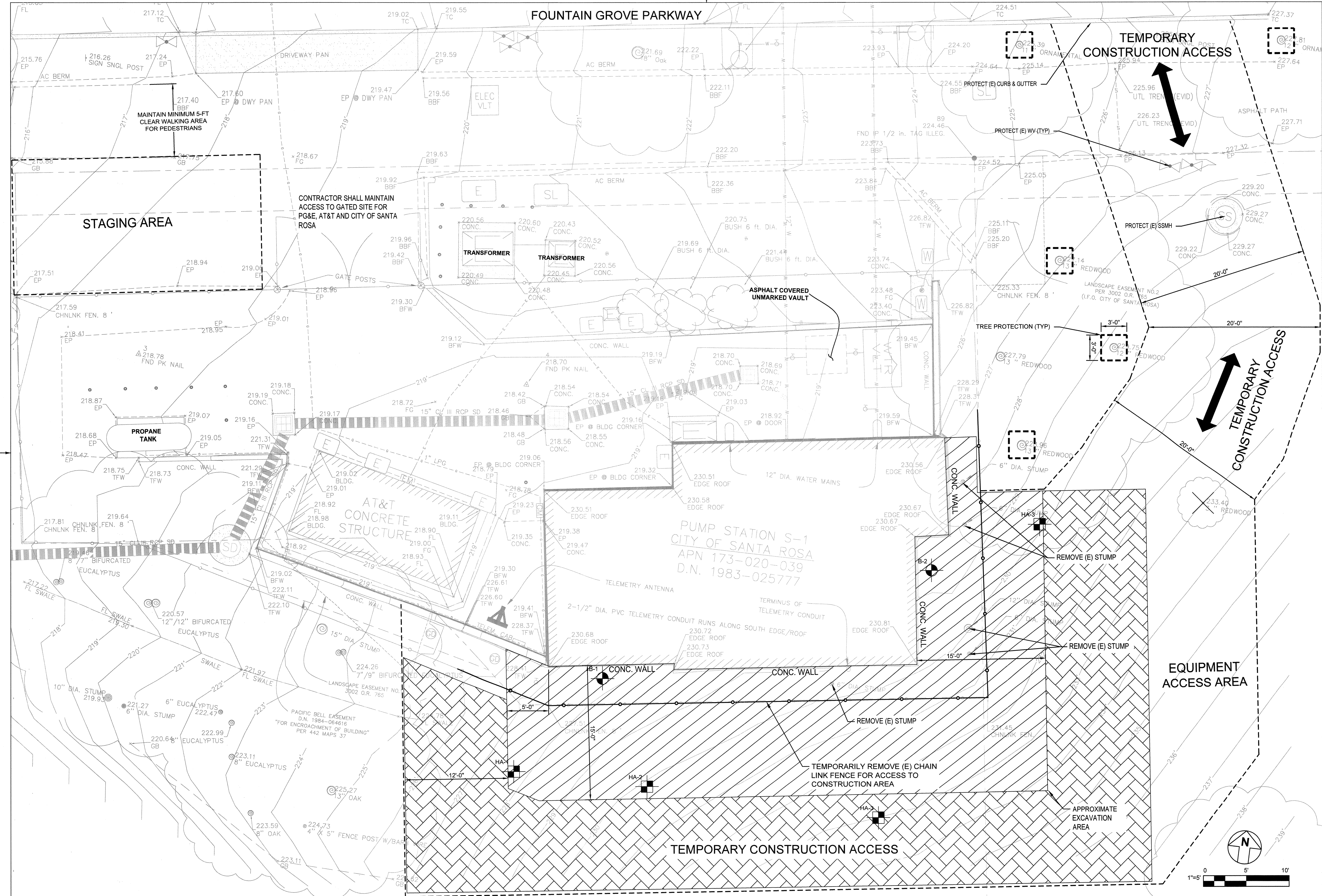
STATEMENT OF SPECIAL INSPECTIONS	SCHEDULE OF INSPECTION AND TESTING AGENCIES	REQUIRED SPECIAL INSPECTIONS AND TEST OF SOILS														
<p>THIS STATEMENT OF SPECIAL INSPECTIONS IS PROVIDED FOR REFERENCE IN ACCORDANCE WITH THE SPECIAL INSPECTION AND STRUCTURAL TESTING REQUIREMENTS OF THE BUILDING CODE SECTIONS 1704 AND 1705.</p> <p>THIS STATEMENT OF SPECIAL INSPECTIONS ENCOMPASS THE FOLLOWING DISCIPLINES:</p> <p>STRUCTURAL SPECIAL INSPECTIONS PER 1704 AND 1705 STRUCTURAL SPECIAL INSPECTIONS FOR SEISMIC RESISTANCE STRUCTURAL SPECIAL INSPECTIONS FOR WIND RESISTANCE</p> <p>THE SCHEDULE OF SPECIAL INSPECTIONS SUMMERIZES THE SPECIAL INSPECTIONS AND TEST REQUIRED. SPECIAL INSPECTORS WILL REFER TO THE APPROVED PLANS AND SPECIFICATIONS FOR DETAILED SPECIAL INSPECTION REQUIREMENTS. ANY ADDITIONAL TESTS AND INSPECTIONS REQUIRED BY THE APPROVED PLANS AND SPECIFICATIONS WILL ALSO BE PERFORMED.</p> <p>THE SPECIAL INSPECTIONS IDENTIFIED ARE IN ADDITION TO THOSE REQUIRED BY OTHER SECTIONS OF THE BUILDING CODE. SPECIAL INSPECTION IS NOT A SUBSTITUTE FOR INSPECTION BY THE BUILDING OFFICIAL HAVING JURISDICTION OR CONTRACTING OFFICER</p> <p>THE SPECIAL INSPECTION COORDINATOR SHALL KEEP RECORDS OF ALL INSPECTIONS AND SHALL FURNISH INSPECTION REPORTS TO THE BUILDING OFFICIAL AND THE REGISTERED DESIGN PROFESSIONAL IN RESPONSIBLE CHARGE. DISCOVERED DISCREPANCIES SHALL BE BROUGHT TO THE IMMEDIATE ATTENTION OF THE CONTRACTOR FOR CORRECTION. IF SUCH DISCREPANCIES ARE NOT CORRECTED, THE DISCREPANCIES SHALL BE BROUGHT TO THE ATTENTION OF THE BUILDING OFFICIAL AND THE REGISTERED DESIGN PROFESSIONAL IN RESPONSIBLE CHARGE. THE SPECIAL INSPECTION PROGRAM DOES NOT RELIEVE THE CONTRACTOR OF HIS OR HER RESPONSIBILITIES.</p> <p>INTERIM REPORTS SHALL BE SUBMITTED TO THE BUILDING OFFICIAL AND THE REGISTERED DESIGN PROFESSIONAL IN RESPONSIBLE CHARGE IN ACCORDANCE WITH SECTION 1704.2.4.</p> <p>A FINAL REPORT OF SPECIAL INSPECTIONS DOCUMENTING COMPLETION OF ALL REQUIRED SPECIAL INSPECTIONS, TESTING AND CORRECTION OF ANY DISCREPANCIES NOTED IN THE INSPECTIONS SHALL BE SUBMITTED PRIOR TO ISSUANCE OF A CERTIFICATE OF USE AND OCCUPANCY PER SECTION 1704.2.4. THE FINAL REPORT WILL DOCUMENT THE REQUIRED SPECIAL INSPECTIONS AND CORRECTION OF DISCREPANCIES NOTED IN INSPECTIONS.</p> <p>JOB SITE SAFETY AND MEANS AND METHODS OF CONSTRUCTION ARE SOLELY THE RESPONSIBILITY OF THE CONTRACTOR.</p> <p>THE CONTRACTOR IS REQUIRED TO COORDINATE ALL INSPECTIONS. THE CONTRACTOR SHALL NOTIFY GHD AND THE SPECIAL INSPECTOR A MINIMUM OF 24 HOURS PRIOR TO ANY SPECIAL INSPECTIONS THAT ARE REQUIRED. THE CONTRACTOR SHALL NOTIFY GHD, THE ARCHITECT, AND THE SPECIAL INSPECTOR A MINIMUM OF 24 HOURS PRIOR TO ANY CONCRETE TO BE POURED.</p> <p>THE INSPECTORS AND TESTING AGENCIES SHALL BE ENGAGED BY THE OWNER OR THE OWNER'S AGENT, AND NOT BY THE CONTRACTOR OR SUBCONTRACTOR WHOSE WORK IS TO BE INSPECTED OR TESTED PER SECTION 1705. ANY CONFLICT OF INTEREST MUST BE DISCLOSED TO THE BUILDING OFFICIAL/CONTRACTING OFFICER, PRIOR TO COMMENCING WORK. IF APPROPRIATE AGENTS ARE NOTED AS "TO BE DETERMINED (TBD)", THE OWNER IS RESPONSIBLE TO COORDINATE THE ASSEMBLY OF A SPECIAL INSPECTION TEAM. ALL SPECIAL INSPECTORS AND TESTING LABORATORIES SHALL BE SUBMITTED TO GHD AND THE BUILDING OFFICIAL FOR REVIEW.</p> <p>SPECIALY INSPECTED WORK THAT IS INSTALLED OR COVERED WITHOUT THE APPROVAL OF THE BUILDING OFFICIAL/CONTRACTING OFFICER IS SUBJECT TO REMOVAL OR EXPOSURE.</p> <p>CONTINUOUS INSPECTION IS ALWAYS REQUIRED DURING THE PERFORMANCE OF THE WORK UNLESS OTHERWISE SPECIFIED. WHEN WORK IN MORE THAN ONE CATEGORY OF WORK REQUIRING SPECIAL INSPECTION IS TO BE PERFORMED SIMULTANEOUSLY, OR THE GEOGRAPHIC LOCATION OF THE WORK IS SUCH THAT IT CANNOT BE CONTINUOUSLY OBSERVED, IT IS THE AGENT'S RESPONSIBILITY TO EMPLOY A SUFFICIENT NUMBER OF INSPECTORS TO ASSURE THAT ALL THE WORK IS INSPECTED IN ACCORDANCE WITH THE PROVISIONS OF THE BUILDING CODE.</p>	<p>THIS STATEMENT OF SPECIAL INSPECTIONS / QUALITY ASSURANCE PLAN INCLUDES THE FOLLOWING BUILDING SYSTEMS:</p> <p><input checked="" type="checkbox"/> SOILS AND FOUNDATIONS <input type="checkbox"/> WOOD CONSTRUCTION <input type="checkbox"/> CAST-IN-PLACE CONCRETE <input type="checkbox"/> MECHANICAL & ELECTRICAL SYSTEMS <input type="checkbox"/> PRECAST CONCRETE <input type="checkbox"/> ARCHITECTURAL SYSTEMS <input type="checkbox"/> MASONRY LEVEL 1 <input type="checkbox"/> STRUCTURAL STEEL <input type="checkbox"/> MASONRY LEVEL 2 <input type="checkbox"/> COLD-FORMED STEEL FRAMING</p> <table border="1"> <thead> <tr> <th>SPECIAL INSPECTION AGENCIES</th> <th>FIRM AND CONTACT INFO.</th> </tr> </thead> <tbody> <tr> <td>1. SPECIAL INSPECTION COORDINATOR</td> <td>TBD</td> </tr> <tr> <td>2. INSPECTOR</td> <td>TBD</td> </tr> <tr> <td>3. INSPECTOR</td> <td>TBD</td> </tr> <tr> <td>4. TESTING AGENCY</td> <td>TBD</td> </tr> <tr> <td>5. TESTING AGENCY</td> <td>TBD</td> </tr> <tr> <td>6. OTHER</td> <td>TBD</td> </tr> </tbody> </table>	SPECIAL INSPECTION AGENCIES	FIRM AND CONTACT INFO.	1. SPECIAL INSPECTION COORDINATOR	TBD	2. INSPECTOR	TBD	3. INSPECTOR	TBD	4. TESTING AGENCY	TBD	5. TESTING AGENCY	TBD	6. OTHER	TBD	<p>SECTION 1705.6</p> <p>1. VERIFY MATERIALS BELOW SHALLOW FOUNDATIONS ARE ADEQUATE TO ACHIEVE THE DESIRED BEARING CAPACITY. <input checked="" type="checkbox"/> PERIODIC <input type="checkbox"/> CONTINUOUS</p> <p>2. VERIFY EXCAVATIONS ARE EXTENDED TO PROPER DEPTH AND HAVE REACHED PROPER MATERIAL. <input checked="" type="checkbox"/> PERIODIC <input type="checkbox"/> CONTINUOUS</p> <p>3. PERFORM CLASSIFICATION AND TESTING OF COMPACT FILL MATERIALS. <input checked="" type="checkbox"/> PERIODIC <input type="checkbox"/> CONTINUOUS</p> <p>4. VERIFY USE OF PROPER MATERIALS, DENSITIES AND LIFT THICKNESS DURING PLACEMENT AND COMPACTION OF COMPACTED FILL. <input type="checkbox"/> PERIODIC <input checked="" type="checkbox"/> CONTINUOUS</p> <p>5. PRIOR TO PLACEMENT OF COMPACTED FILL, INSPECT SUBGRADE AND VERIFY THAT SITE HAS BEEN PREPARED PROPERLY. <input checked="" type="checkbox"/> PERIODIC <input type="checkbox"/> CONTINUOUS</p>
SPECIAL INSPECTION AGENCIES	FIRM AND CONTACT INFO.															
1. SPECIAL INSPECTION COORDINATOR	TBD															
2. INSPECTOR	TBD															
3. INSPECTOR	TBD															
4. TESTING AGENCY	TBD															
5. TESTING AGENCY	TBD															
6. OTHER	TBD															



NO.	DATE	REVISION	BY

SCALE: NOT TO SCALE
DWN BY: DAD
DATE: MARCH, 2023
CHK BY: MGR

CITY OF SANTA ROSA
WATER PUMP STATION 1
RETAINING WALL IMPROVEMENTS
GEOTECHNICAL BORING LOGS
CONTRACT NO. C02061
SHEET 4 OF 9
FILE NO. 2022-0029



FOUNTAIN GROVE PARKWAY

TEMPORARY CONSTRUCTION ACCESS

STAGING AREA

CONTRACTOR SHALL MAINTAIN ACCESS TO GATED SITE FOR PG&E, AT&T AND CITY OF SANTA ROSA

TRANSFORMER

TRANSFORMER

ASPHALT COVERED UNMARKED VAULT

PROPANE TANK

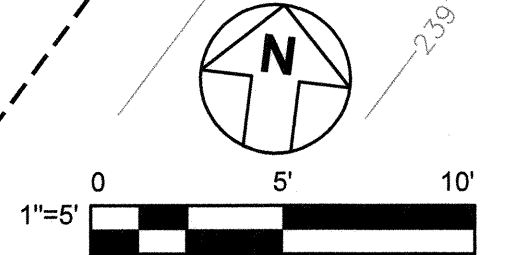
AT&T CONCRETE STRUCTURE

PUMP STATION S-1
CITY OF SANTA ROSA
APN 173-020-039
D.N. 1983-025777

TEMPORARY CONSTRUCTION ACCESS

EQUIPMENT ACCESS AREA

TEMPORARY CONSTRUCTION ACCESS



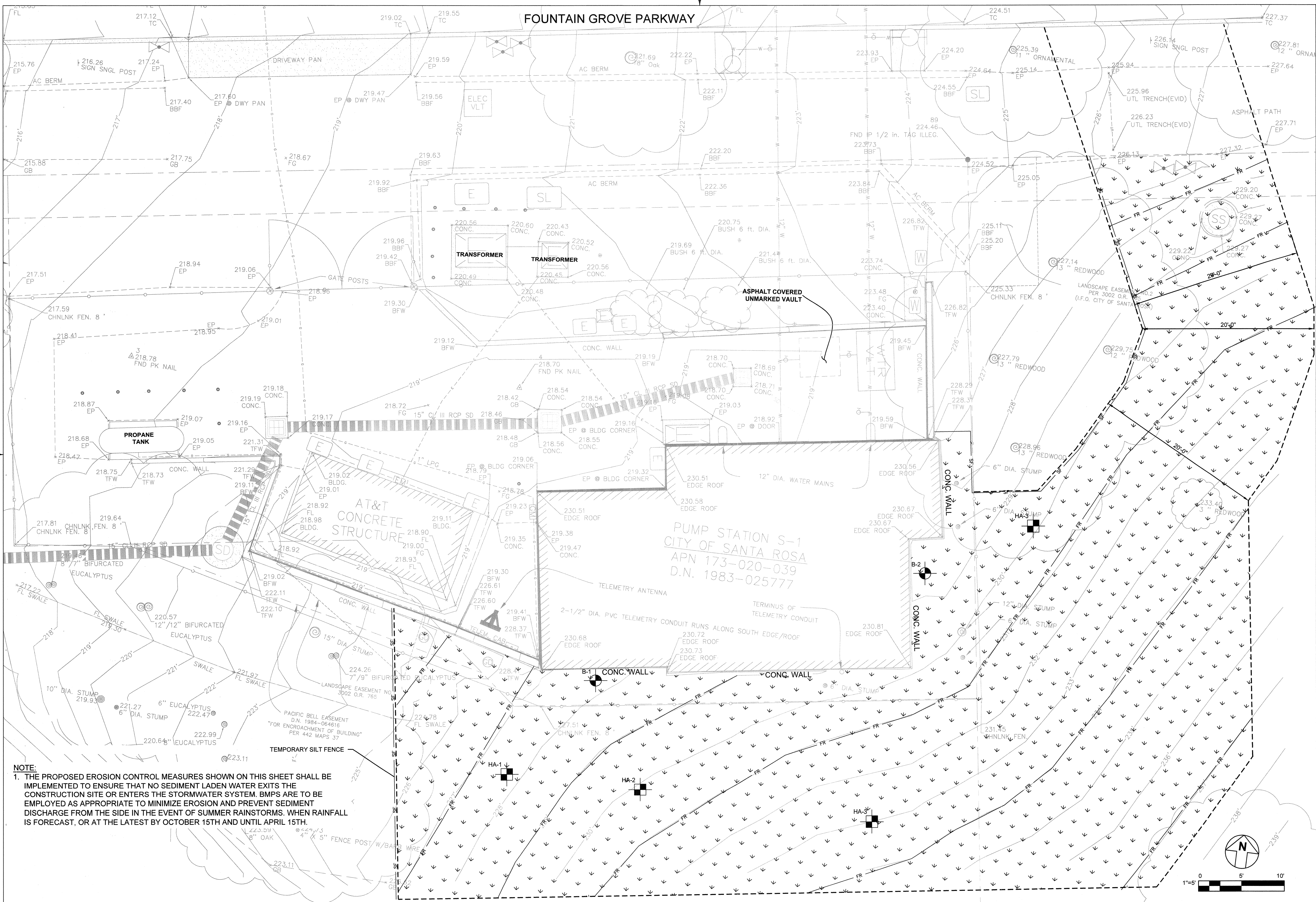
City of Santa Rosa

NO.	DATE	REVISION	BY

SCALE:	1" = 5'
DWN BY:	DAD
CHK BY:	MKG
DATE:	MARCH, 2023

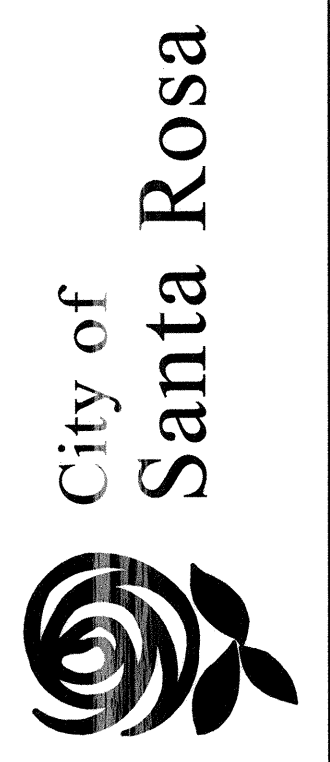
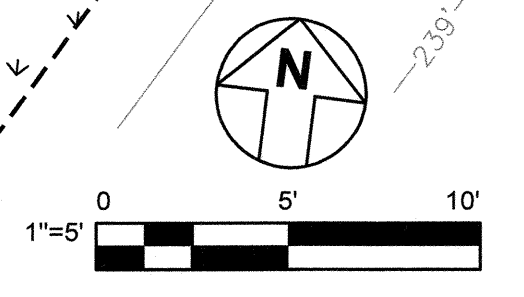
CITY OF SANTA ROSA
WATER PUMP STATION 1
RETAINING WALL IMPROVEMENTS
SITE ACCESS AND STAGING PLAN

FOUNTAIN GROVE PARKWAY



NOTE:
 1. THE PROPOSED EROSION CONTROL MEASURES SHOWN ON THIS SHEET SHALL BE IMPLEMENTED TO ENSURE THAT NO SEDIMENT LADEN WATER EXISTS THE CONSTRUCTION SITE OR ENTERS THE STORMWATER SYSTEM. BMPs ARE TO BE EMPLOYED AS APPROPRIATE TO MINIMIZE EROSION AND PREVENT SEDIMENT DISCHARGE FROM THE SIDE IN THE EVENT OF SUMMER RAINSTORMS. WHEN RAINFALL IS FORECAST, OR AT THE LATEST BY OCTOBER 15TH AND UNTIL APRIL 15TH.

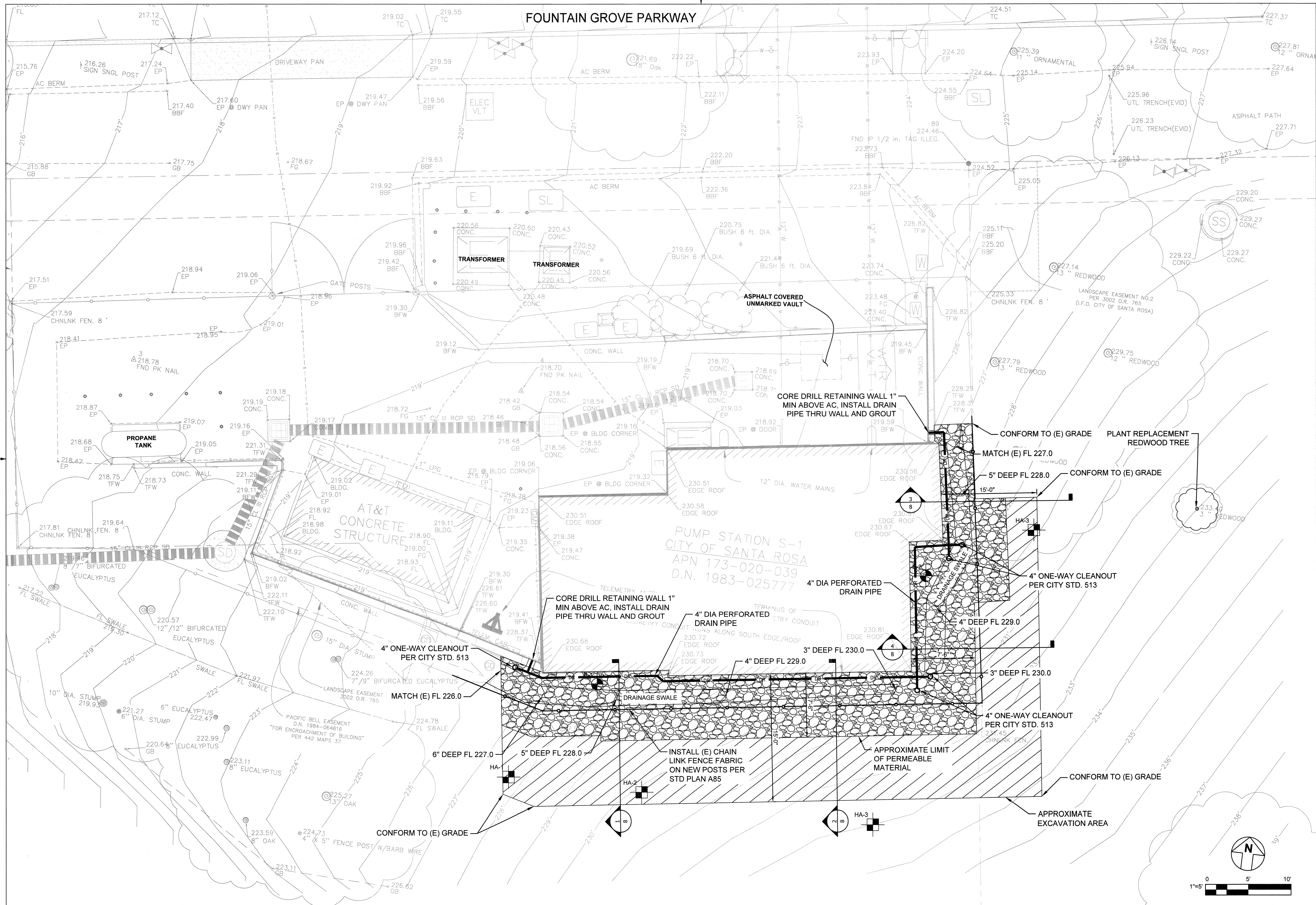
PUMP STATION S-1
 CITY OF SANTA ROSA
 APN 173-020-039
 D.N. 1983-025777



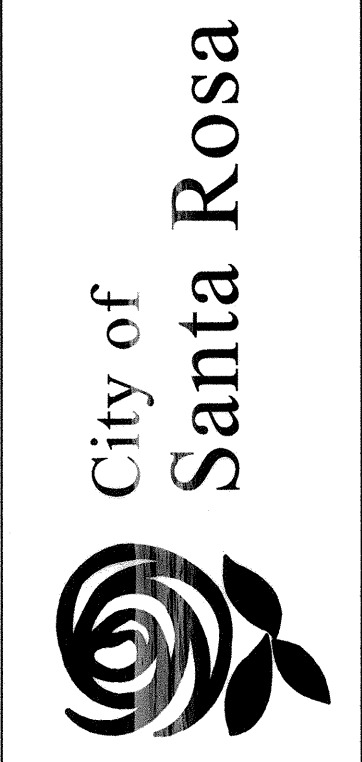
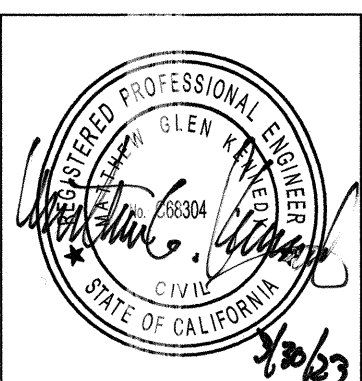
NO.	DATE	REVISION	BY

SCALE:	1" = 5'	DAD	DWN BY:
DATE:	MARCH, 2023	CHK BY:	MKG

CITY OF SANTA ROSA
**WATER PUMP STATION 1
 RETAINING WALL IMPROVEMENTS**
EROSION CONTROL PLAN
 CONTRACT NO. C02061
 SHEET 6 OF 9
 FILE NO. 2022-0029



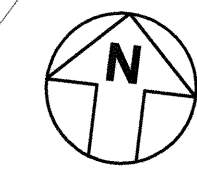
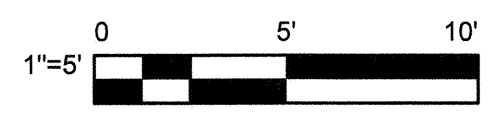
PUMP STATION S-1
CITY OF SANTA ROSA
APN 173-020-039
D.N. 1983-025777

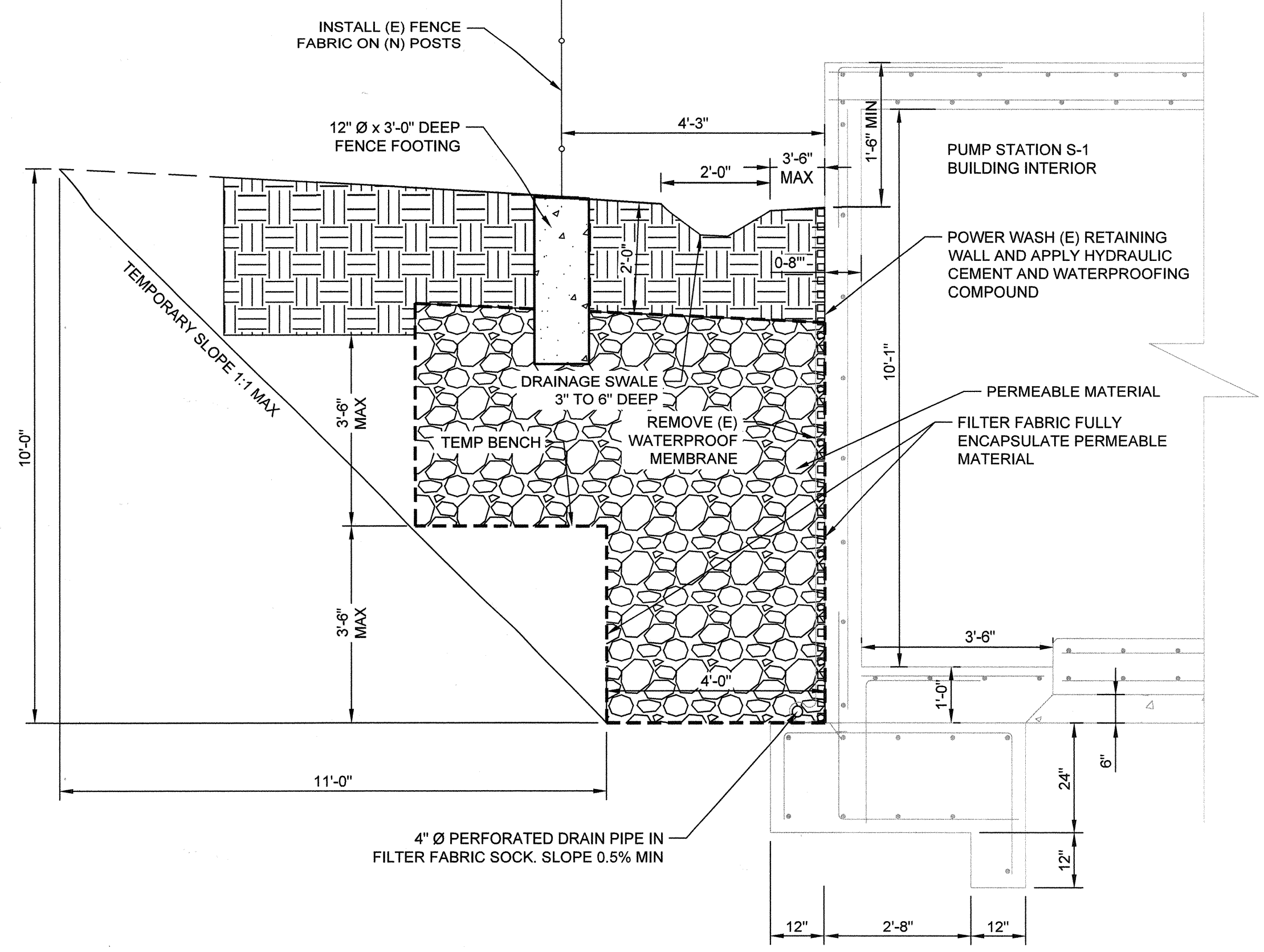


NO.	DATE	REVISION	BY

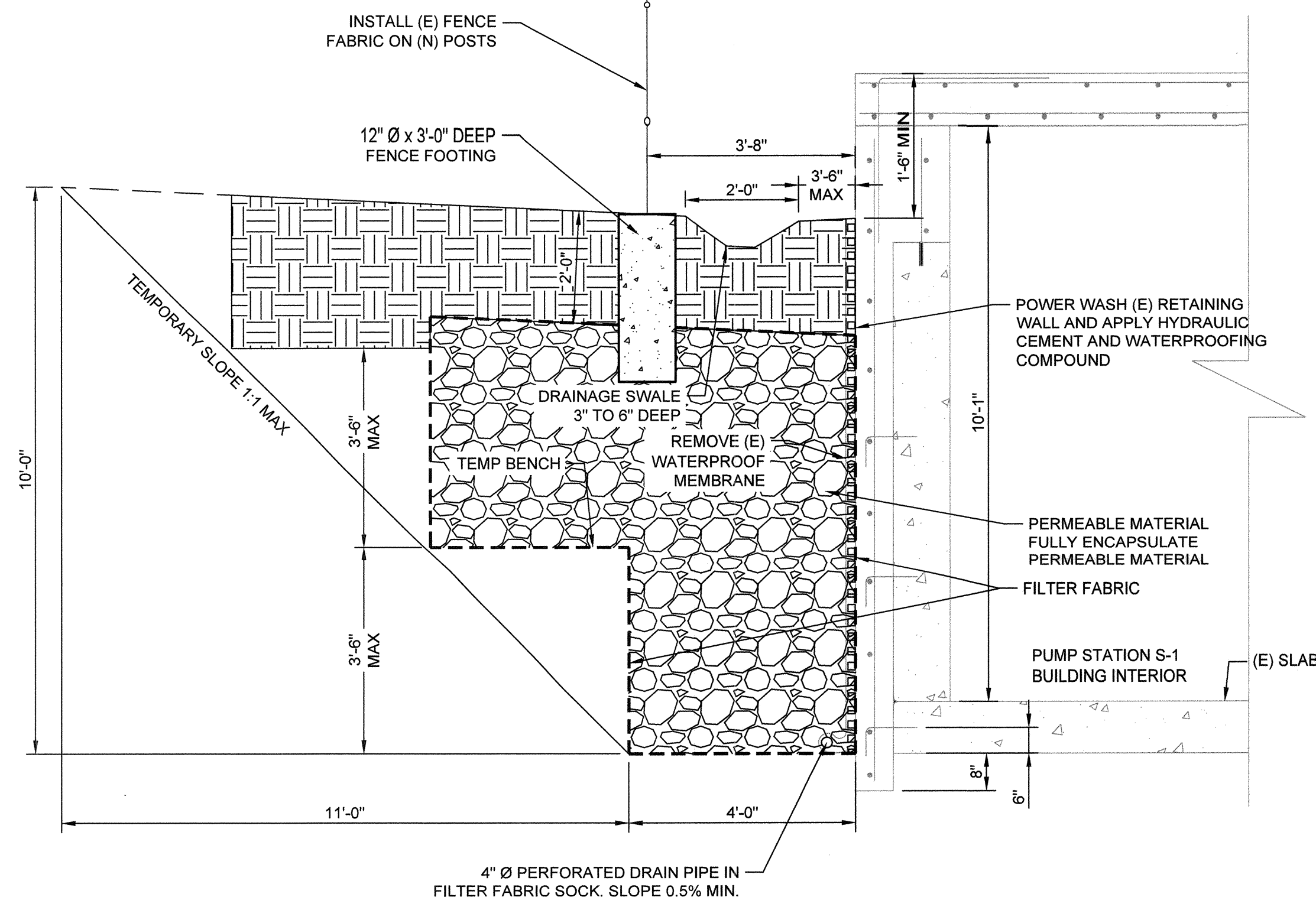
SCALE:	1" = 5'	DAD	DWN BY:
DATE:	MARCH, 2023	CHK BY:	MKG

CITY OF SANTA ROSA
**WATER PUMP STATION 1
RETAINING WALL IMPROVEMENTS**
EXISTING SITE IMPROVEMENT PLAN
CONTRACT NO. C02061
SHEET 7 OF 9
FILE NO. 2022-0029

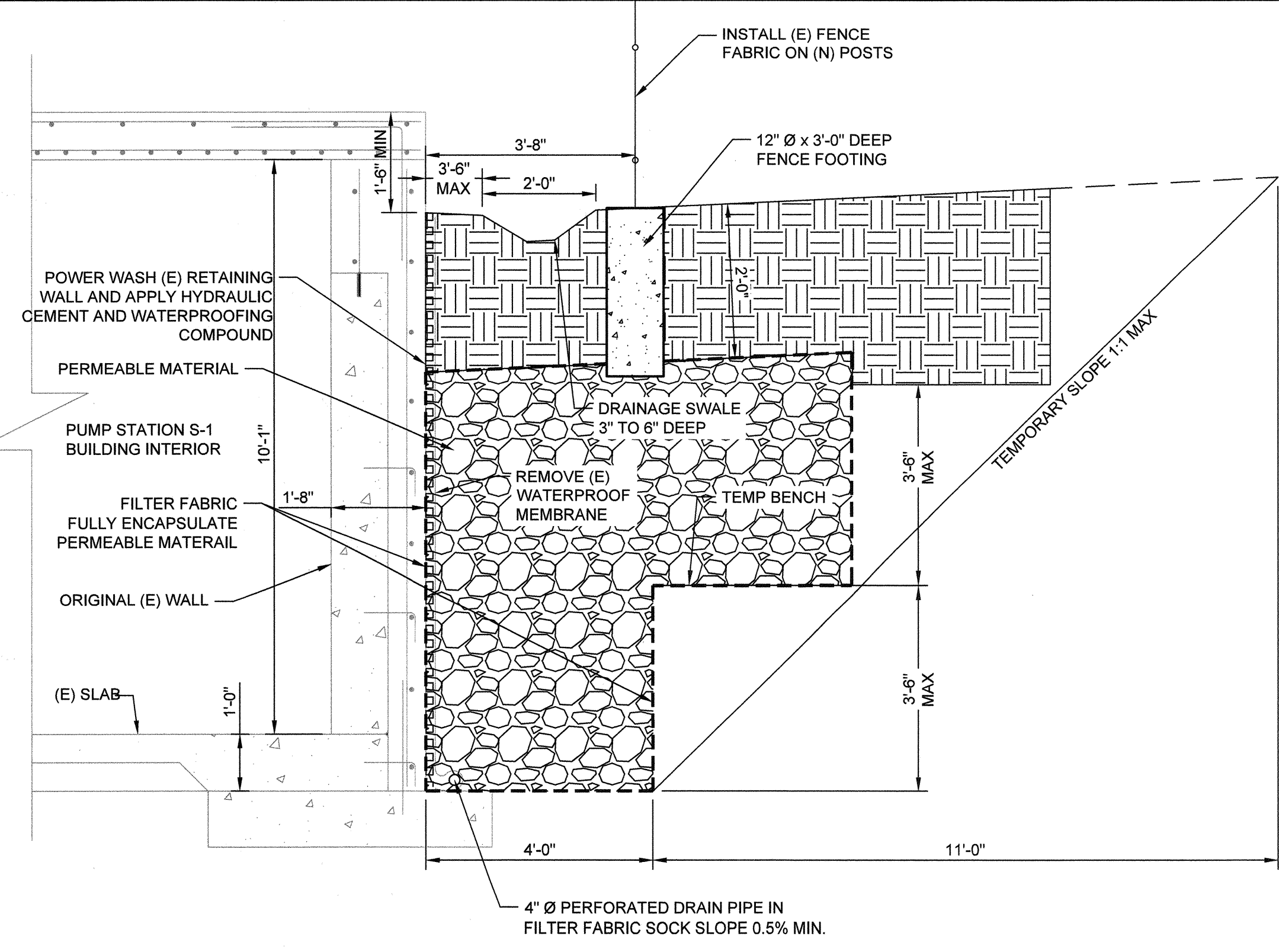




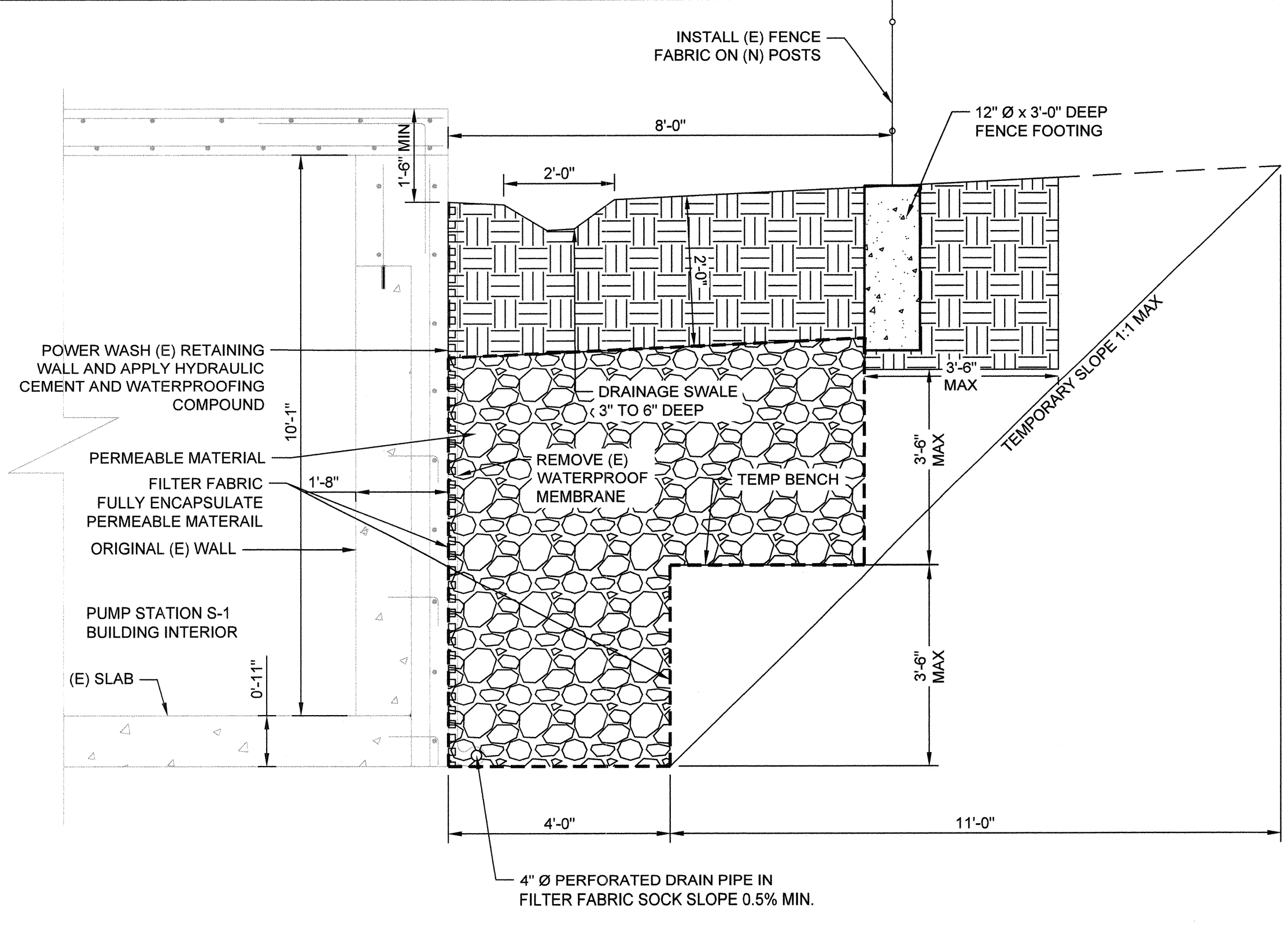
1 SECTION 1
SCALE = 1" = 2'-0"



2 SECTION 2
SCALE = 1" = 2'-0"



3 SECTION 3
SCALE = 1" = 2'-0"



4 SECTION 4
SCALE = 1" = 2'-0"

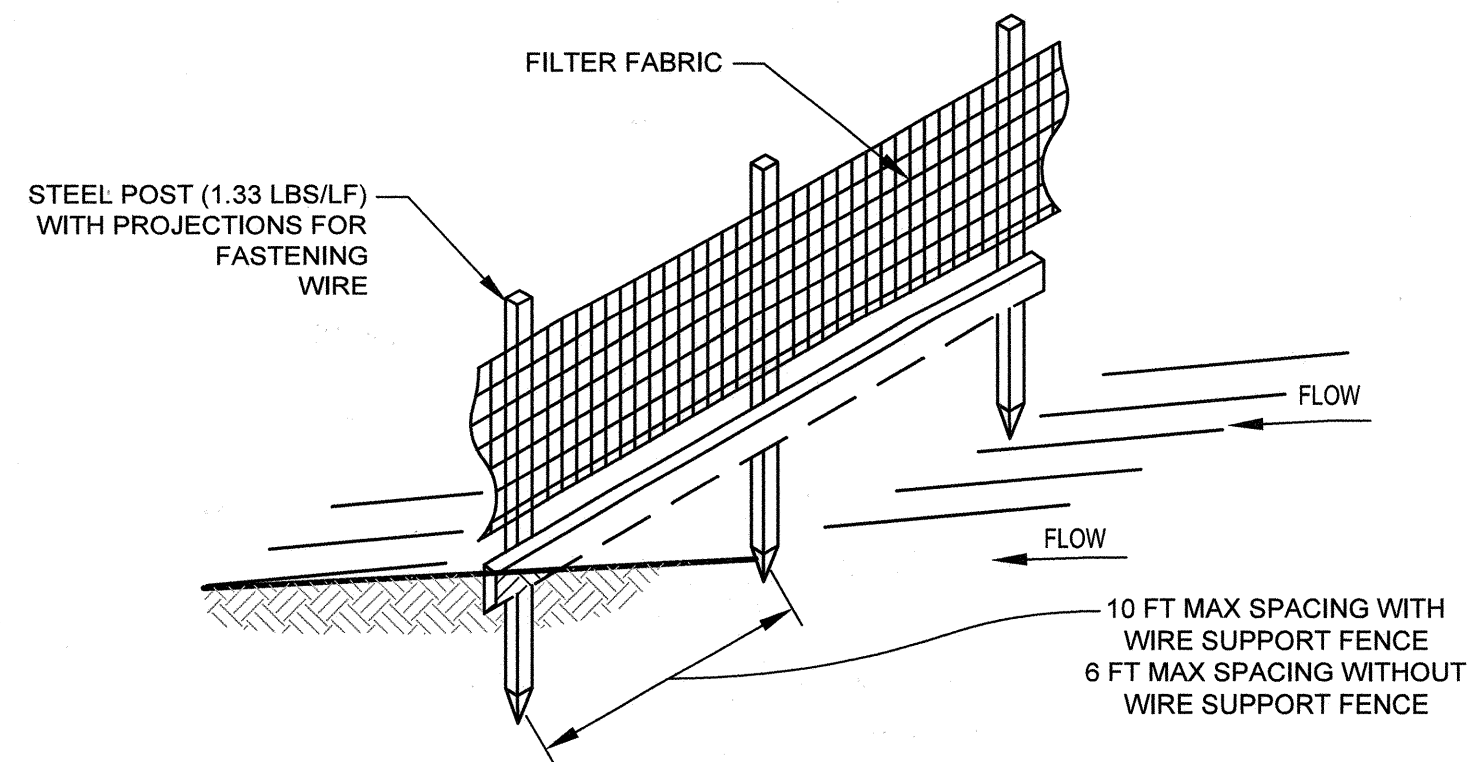


NO.	DATE	REVISION	BY

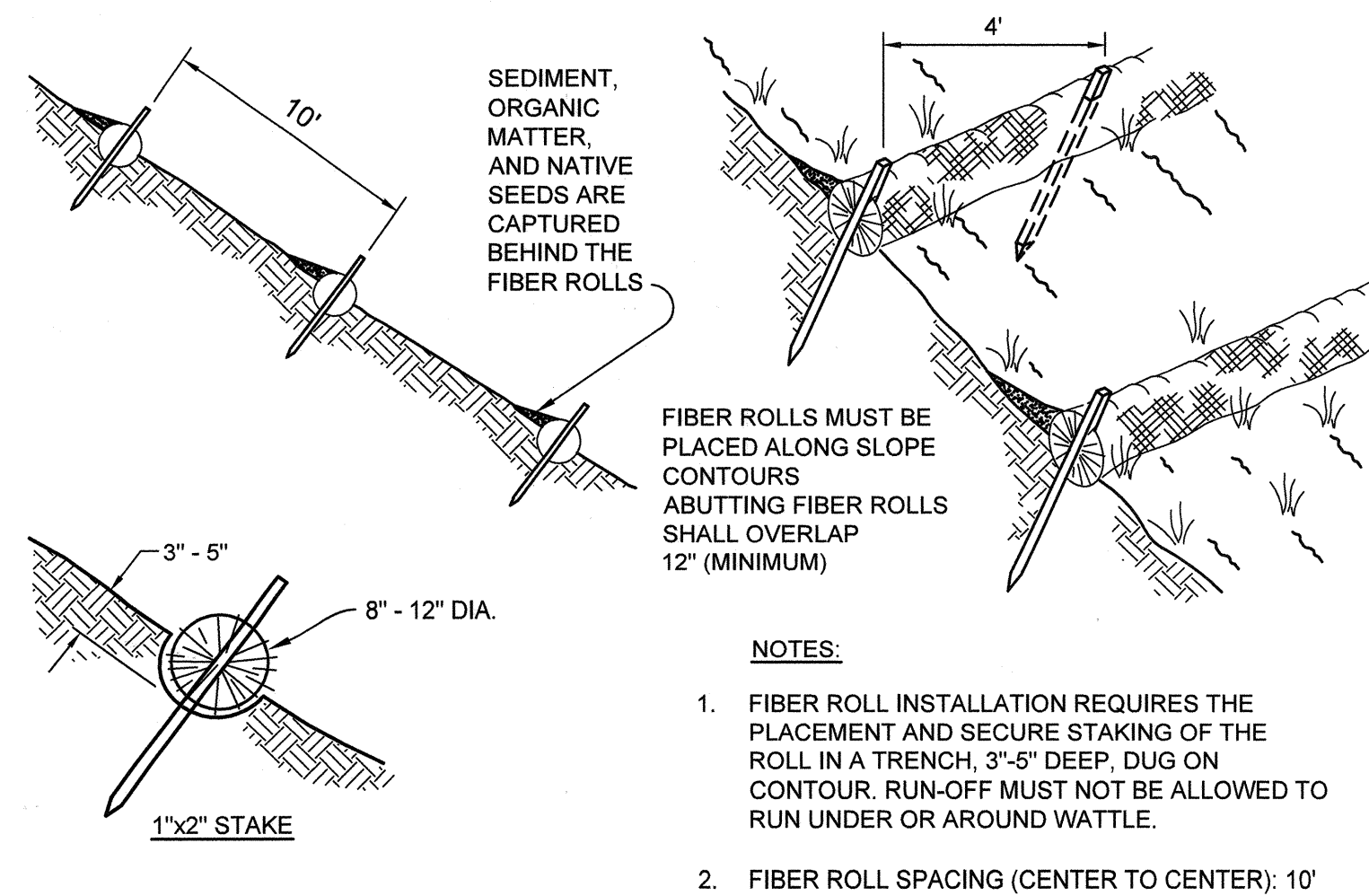
SCALE:	AS SHOWN	DWN BY:	DAD
DATE:	MARCH, 2023	CHK BY:	MKG

CITY OF SANTA ROSA
WATER PUMP STATION 1
RETAINING WALL IMPROVEMENTS

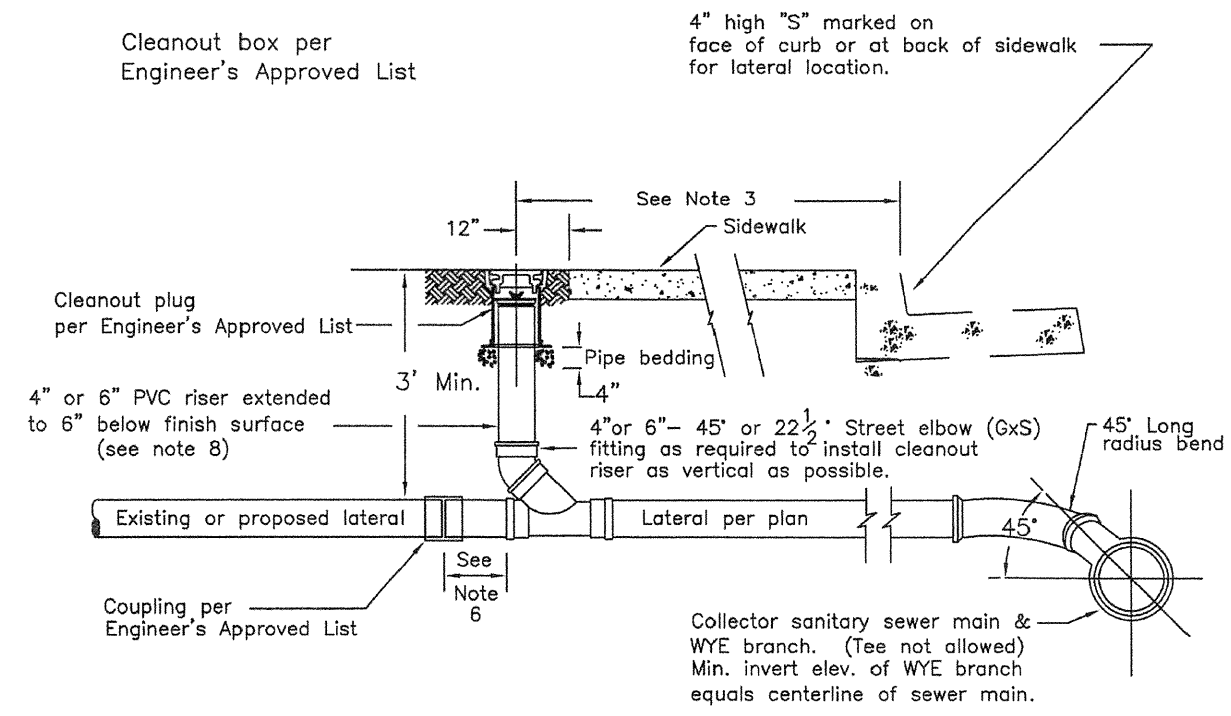
RETAINING WALL SECTIONS



1 SILT FENCE INSTALLATION
SCALE = NTS



2 FIBER ROLL INSTALLATION
SCALE = NTS



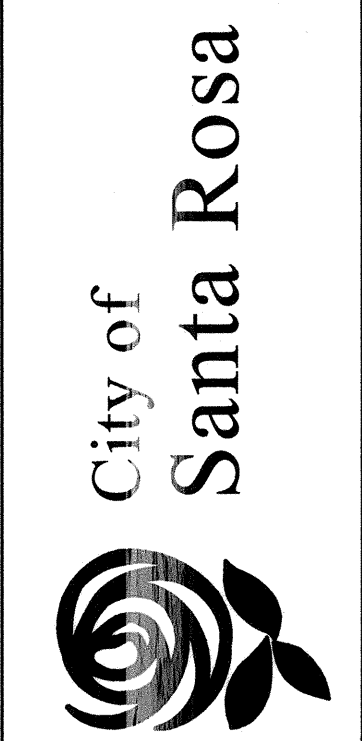
- NOTES:**
- The sewer service lateral shall be of sufficient depth to adequately serve the building site, and in no case shall be less than 3' deep at the cleanout unless otherwise authorized by the Water Department Director.
 - Where problems are anticipated in providing sewer service to a given building site, the lateral invert at the cleanout shall be staked by the owner's engineer.
 - Cleanout must be installed within the Public Right of Way or P.U.E. Cleanout to be installed behind sidewalk or at back of P.U.E. Where lateral must be in a driveway, install cleanout at back of sidewalk.
 - In cases where the cleanout installation conflicts with existing facilities, the contractor shall verify any alternate location with the City's Engineer prior to installation.
 - Minimum 2% slope for 4" laterals and a min. 1% slope for 6" laterals are required unless a variance is specifically approved by the Water Department Director and the Building Official.
 - A minimum of 12" when connecting to existing sewer lateral or extend to 1' behind P.U.E. or sidewalk for new construction.
 - For new construction, cap or plug end of service lateral watertight.
 - Lateral material shall be SDR 26 PVC or Ductile Iron pipe. Riser pipe shall be SDR 35 or 28 on 4" laterals and SDR 35 on 6" laterals.
 - Cleanout components shall be the same size as the lateral pipe, and all PVC fittings shall be SDR 26.
 - Top fittings on mains smaller than 12" may only be used under the approval of the Water Department Director.

LATERAL CONNECTIONS TO EXISTING MAINS:

Main Size & Material	Connection Type	Couplings
6-10" ACP, VCP	Cut in PVC wye w/1/8" spools each end	Rubber w/Steel shear bands
6-10" PVC	Cut in PVC wye w/1/8" spools each end	Rigid slip couplings
6-10" DIP	Cut in DIP wye w/1/8" spools each end	DIP couplings
12" and larger	Tap fitting see Engineer's approved list	NA

CITY OF SANTA ROSA
4" & 6" SEWER SERVICE LATERAL and ONE WAY CLEANOUT
SCALE: NONE DATE: Sept. 2017
DWN: GC:RR APPROVED: [Signature] FILE NO. 513
CHK: RM

3 4" & 6" SEWER SERVICE LATERAL AND ONE WAY CLEANOUT
SCALE = NTS



NO.	DATE	REVISION	BY

SCALE:	1" = 5'	DWN BY:	DAD	NO.	
DATE:	MARCH, 2023	CHK BY:	MKG	DATE	

CITY OF SANTA ROSA
WATER PUMP STATION 1
RETAINING WALL IMPROVEMENTS
CIVIL DETAILS