

INVITATION FOR BIDS



FOR CONSTRUCTING

NEIGHBORHOOD STREETS INITIATIVE SLURRY SEAL 2016

CONTRACT NUMBER

C02071

ISSUED BY

CAPITAL PROJECTS ENGINEERING DIVISION

CITY OF SANTA ROSA, CALIFORNIA

2016

ATTENTION
Prebid Conference
See Page 1



STATE OF CALIFORNIA

INVITATION FOR BIDS

CONTAINING:

NOTICE TO BIDDERS

SPECIAL PROVISIONS

BID FORMS

CONTRACT

FOR

**NEIGHBORHOOD STREETS INITIATIVE
SLURRY SEAL 2016**

Contract No. C02071

NEIGHBORHOOD STREETS INITIATIVE SLURRY SEAL 2016

TABLE OF CONTENTS

NOTICE TO BIDDERS

NOTICE TO BIDDERS.....	1
------------------------	---

SPECIAL PROVISIONS

GENERAL SPECIFICATIONS

1 General.....	4
2 Bidding	5
3 Contract Award and Execution.....	7
4 Scope of Work	11
5 Control of Work	12
6 Control of Materials.....	15
7 Legal Relations and Responsibility to the Public.....	18
8 Prosecution and Progress.....	22
9 Measurement and Payment.....	23

TECHNICAL SPECIFICATIONS	26
--------------------------------	----

Section 12	Temporary Traffic Control	27
Section 13	Water Pollution Control.....	31
Section 14	Environmental Stewardship	35
Section 15	Existing Facilities	38
Section 37-3	Slurry Seal.....	39
Section 84	Traffic Stripes and Pavement Markings	50
Section 85	Pavement Markers.....	52
Section 111	Tree Pruning and Trimming	53
Section 121	Notification.....	54

BID FORMS

Contract Bid	55
Unit Price Schedule.....	56
List of Subcontractors.....	58
List of Previous Similar Jobs	59
Noncollusion Declaration.....	60
Bid Bond Affidavit and Bidder's Signature	61

CONTRACT

Contract	62
----------------	----

CITY OF SANTA ROSA
STATE OF CALIFORNIA

NOTICE TO BIDDERS

➤	For technical questions regarding this project, contact Danny Chen at (707) 543-3911.
➤	For direct access to plans, specifications and planholders' lists, go to www.srcity.org/bids and click on <u>Bid/Proposal Opportunities</u> or call (707) 543-3800.
➤	For direct access to bid results, go to www.srcity.org/bids . Under Link to Capital Projects, click on <u>Capital Projects Contracts</u> or call (707) 543-3835.

- IMPORTANT -

Bid Acceptance Deadline

Sealed bids will be accepted at the Transportation and Public Works Department, 69 Stony Circle, Santa Rosa, California 95401 until 3:00 p.m., July 13, 2016, for Neighborhood Streets Initiative Slurry Seal 2016, Contract No. C02071. (Engineer's Range: \$950,000 - \$1,100,000.)

Bids tendered after this deadline will not be accepted. The official time clock for accepting bids will be an electric date and time stamping clock, located in the Transportation and Public Works Department, 69 Stony Circle, Santa Rosa, California. In order to be accepted, bids must be received prior to 3:00 p.m. Therefore, a bid stamped in at 2:59 p.m. will be accepted, but one delivered at or after 3:00 p.m. is late and will not be accepted.

Pre-Bid Meeting

Prospective bidders, subcontractors, and material suppliers are invited to attend a pre-bid meeting scheduled to be held at 11:00 a.m., July 6, 2016, in the Transportation and Public Works Department located at 69 Stony Circle, Santa Rosa, California.

Subcontractor Information; Department of Industrial Relations Registration

Bidders shall provide the names, business addresses and license numbers of all subcontractors listed on bidder's List of Subcontractors. No contractor or subcontractor may be listed on a bid for this public works project unless registered with the Department of Industrial Relations (DIR) pursuant to Labor Code section 1725.5. No contractor or subcontractor may be awarded a contract for this public works project unless registered with the DIR pursuant to Labor Code section 1725.5. This public works project is subject to compliance monitoring and enforcement by the DIR.

**CITY OF SANTA ROSA ESTIMATED QUANTITIES
C02071 - NEIGHBORHOOD STREETS INITIATIVE SLURRY SEAL 2016**

Item No.	Description	Quantity	Units
1	INCENTIVE FOR EARLY COMPLETION (I)		1 LS
2	DAILY COMPLETION INCENTIVE (I)		7 EA
3	TRAFFIC CONTROL		1 LS
4	WATER POLLUTION CONTROL		1 LS
5	REMOVE EXISTING TRAFFIC STRIPES AND PAVEMENT MARKINGS		1 LS
6	REMOVE EXISTING PAVEMENT MARKERS		1 LS
7	SLURRY SEAL	2,127,879	SF
8	CRACK SEAL	15,000	LF
9	4-INCH THERMOPLASTIC	2000	LF
10	8-INCH THERMOPLASTIC	200	LF
11	12-INCH THERMOPLASTIC	1500	LF
12	THERMOPLASTIC TURN ARROW		15 EA
13	PAVEMENT MARKING	1000	SF
14	PAVEMENT MARKERS RETRO-REFLECTIVE		100 EA
15	PAVEMENT MARKERS NON-REFLECTIVE		500 EA
16	TREE PRUNING AND TRIMMING		1 LS

The foregoing quantities are approximate only, being given as a basis for the comparison of bids, and the City of Santa Rosa does not expressly or by implication, agree that the actual amount of work will correspond therewith, but reserves the right to increase or decrease the amount of any class or portion of the work, as may be deemed necessary or expedient by the Engineer.

Bids shall be made in accordance with the prevailing hourly rate of per diem wages for this locality and project as determined by the Director of the DIR pursuant to Labor Code sections 1770 *et seq.*

Contractor shall be responsible for compliance with the Immigration Reform Control Act of 1986.

If the project requires the employment of workers in any apprenticeable craft or trade, once awarded, Contractor and subcontractors must apply to the Joint Apprenticeship Council unless already covered by local apprentice standards (see Labor Code section 1777.5).

All bids are to be compared on the basis of the Engineer's estimate of the quantities of work to be performed. No bid will be awarded to a contractor who is not licensed in accordance with the provisions of Chapter 9 of Division 3 of the Business and Professions Code. Contractor must hold a Class A license for this project.

Project plans, bid and contract forms for C02071 Neighborhood Streets Initiative Slurry Seal 2016 may be obtained through PlanetBids at www.srcity.org/bids. These documents can no longer be obtained at the Transportation and Public Works Department.

No bid will be accepted unless it is made on the contract bid forms furnished by the Transportation and Public Works Department through PlanetBids. The original of the completed bid forms bearing original signatures must be submitted. A bid will not be accepted unless the bidder registers as a vendor through PlanetBids at www.srcity.org/bids, downloads documents/attachments, and is added to the prospective bidders list for this project.

The successful bidder will be required to hold a current City of Santa Rosa business tax certificate issued pursuant to Chapter 6.04 of the Santa Rosa City Code before commencing work on this project. For information regarding the business tax, contact Revenue and Collections at (707) 543-3170.

For any moneys earned by Contractor and withheld by the City of Santa Rosa to ensure the performance of the Contract, Contractor may, at its request and expense, substitute securities equivalent to the amount withheld in the form and manner and subject to the conditions provided in Section 22300 of the California Public Contract Code.

The City of Santa Rosa reserves the right to reject any or all bids and the right to waive minor irregularities or informalities in any bid or bonds.



DAVID MONTAGUE
Supervising Engineer

6/23/2016

Date

SPECIAL PROVISIONS

General Specifications

CITY OF SANTA ROSA, CALIFORNIA

NEIGHBORHOOD STREETS INITIATIVE SLURRY SEAL 2016

1 GENERAL

The work described herein shall be done in accordance with the "Contract Documents," which are the:

1. Special Provisions
2. City of Santa Rosa Design and Construction Standards (City Standards)
3. City of Santa Rosa Construction Specifications for Public Improvements (City Specifications)
4. State of California Department of Transportation Standard Specifications 2010 (Standard Specifications), and
5. State of California Department of Transportation Standard Plans 2010 (Standard Plans).

In the event of a conflict in any of these documents, the order of precedence shall be determined by Section 5-1.02 of these Special Provisions.

Whenever the Standard Specifications use the terms State of California, Department of Transportation, Director, Engineer, or Laboratory, the following terms shall be substituted therefor, and any reference to any of the foregoing terms shall be understood and interpreted to mean and refer to such substituted terms as follows:

For State of California - the City of Santa Rosa;

For Department - the City of Santa Rosa Department of Transportation and Public Works or the City of Santa Rosa Water Department;

For Director - the City Engineer of the City of Santa Rosa;

For Engineer - the City Engineer of the City of Santa Rosa or the City Engineer's authorized agents;

For Laboratory – Materials Engineering of the City of Santa Rosa Water Department, or such other laboratory as may be authorized by the City.

Unless otherwise provided, whenever in these Special Provisions attention is directed to specific provisions in the Standard Specifications, such direction shall not be interpreted as excluding other applicable provisions of the Standard Specifications.

Unless otherwise provided, when sections and subsections of the Standard Specifications are used in these Special Provisions, such use is not exclusive and shall not be interpreted as excluding other applicable provisions of said sections and subsections, but is only intended to add to or modify such sections or subsections.

Unless otherwise provided, full compensation for compliance with these Special Provisions is included in the contract price and no additional allowance will be made to Contractor therefor. The Standard Specifications are hereby modified to delete any reference or incorporation of provisions providing for or requiring arbitration of any and all claims and disputes arising under this contract.

2 BIDDING

2-1.06 Bid Documents: Prospective bidders will be furnished with an Invitation for Bids which will state the location and description of the contemplated public works project and will show the approximate estimate of the various quantities and kinds of work to be performed and materials to be furnished with a schedule of items for which unit prices are requested.

2-1.07 Approximate Estimate: The quantities given in the Contract Documents are approximate only, being given as a basis for the comparison of bids, and the City does not, expressly or by implication, agree that the actual amount of work will correspond therewith, but reserves the right to increase or decrease the amount of any class or part of the work or to omit parts of the work, as may be deemed necessary or advisable by the Engineer.

2-1.31 Examination of Project Plans, Specifications, City Standards, Invitation for Bids and Work Site: Prior to submitting a bid, the bidder shall carefully examine the Project Plans, Invitation for Bids, City Standards and the proposed work site. If any person contemplating submitting a bid for this public works project is in doubt as to the meaning of any part of the Contract Documents, or finds discrepancies in or omissions from the Contract Documents, he or she may submit a written request for interpretation or correction to the Engineer. The written request must be received by the Engineer a minimum of 96 hours prior to bid opening. Any interpretation or correction of the Contract Documents prior to bid opening will be made only by written addendum issued by the City. A copy of such addendum will be mailed or faxed to each Planholder. The City will not be bound by any other explanations or interpretations of the Contract Documents.

2-1.33A Bid Forms: All bids shall be made on bid forms obtained from PlanetBids at www.srcity.org/bids. The bidder shall submit its bid on the original bid forms furnished by the City. Bids submitted on forms other than the forms furnished to the bidder by the City will not be considered.

The bid forms to be submitted at the time of and with the bid are:

1. Unit Price Schedule
2. List of Subcontractors
3. List of Previous Similar Jobs
4. Noncollusion Declaration
5. Bid Guaranty Information and Bidder's Information and Signature
6. Bid Guaranty (Bid Bond or alternate security)

All bids shall give the proposed prices and must bear the original signature of the bidder. Bidders shall fill in all blanks on the bid forms where required. A bid will not be accepted unless the bidder registers as a vendor through PlanetBids at www.srcity.org/bids, downloads documents/attachments, and is added to the prospective bidders list for this project.

2-1.33B Registration with DIR: No contractor or subcontractor may be listed on a bid for this public works project unless registered with the Department of Industrial Relations (DIR) pursuant to Labor Code section 1725.5. No contractor or subcontractor may be awarded a contract for this public works project unless registered with the DIR pursuant to Labor Code section 1725.5. This public works project is subject to compliance monitoring and enforcement by the DIR.

2-1.33C Subcontractors: The Subletting and Subcontracting Fair Practices Act, Public Contract Code sections 4100-4113, inclusive (the "Act") shall apply to all subcontracts in excess of one-half of one percent of the total amount of a bid. The Act requires subcontractors, if used for such work, to be listed in the contractor's bid and prohibits the substitution of subcontractors, except as

authorized by the Act. Each bidder shall, with respect to the work of any subcontractor in excess of one-half of one percent of the total amount of the bid, include as part of the bid on the bid form provided:

1. The name, business address and DIR registration number of each subcontractor who will perform work or labor or render services to the Contractor in or about the construction of the work or improvement, or a subcontractor licensed by the State of California who, under subcontract to the Contractor, specially fabricates and installs a portion of the work or improvement according to detailed drawings contained in the Project Plans or other Contract Documents in an amount in excess of one-half of one percent of the Contractor's total bid; and
2. The portion of the work that will be done by each subcontractor. Only one subcontractor shall be listed for each portion.

The purchase of sand, gravel, crushed rock, batched concrete, aggregate, ready-mixed concrete, and/or any other materials produced and furnished by established and recognized commercial plants, together with the delivery of such materials to the work site by the source of the materials or by recognized commercial hauling companies, is not considered as subcontracting under this section.

2-1.33E Rejection of Bids Containing Alterations, Erasures or Irregularities: Bids may be rejected if they show any alterations of forms, additions not called for, conditional bids, incomplete bids, erasures or irregularities of any kind.

2-1.34 Bid Guaranty: All bids shall be presented under sealed cover and shall be accompanied by cash, cashier's or certified check, or by a bidder's bond made payable to the City of Santa Rosa and executed as surety by a corporate surety authorized and admitted to transact a surety business in the State of California in an amount equal to ten percent of the amount of the bid. No bid shall be considered unless such cash, cashiers or certified check, or bidder's bond is enclosed with the bid. Any bidder's bond shall contain provisions for forfeiture consistent with California Public Contract Code section 20172.

2-1.40 Withdrawal of Bid: A bid may be withdrawn prior to, but not after, the hour fixed in the public notice for the opening of bids, provided that a written request to withdraw the bid, executed by the bidder or the bidder's authorized representative, is filed with the Engineer before this deadline. The withdrawal of a bid shall not prejudice the right of a bidder to submit a new bid.

2-1.43 Public Opening of Bids: Bids will be opened and read publicly at the time and place indicated in the Notice to Bidders. Bidders or their authorized agents are invited to be present.

2-1.46 Disqualification of Bidders: Serial bids from the same bidder will not be accepted. This section shall not be interpreted to mean that the same contractor may not be the contractor in one bid and listed as a subcontractor in another bid, provided that no collusion exists.

2-1.48 Competency of Bidders: No bid will be accepted from or contract awarded to a contractor that is not licensed in accordance with the law, that does not hold a license qualifying it to perform work under this contract, to whom a bid form has not been issued by the Engineer, or that has not successfully completed projects of similar character, scope and cost to the proposed project. Bidders will be required to provide a list of previous similar jobs with their bids.

3 CONTRACT AWARD AND EXECUTION

3-1.04 Contract Award: The City reserves the right to reject any or all bids. Bids are required for the entire work described herein. All bids will be compared with the Engineer's estimate of the quantities of work to be completed. Contract award, if any, will be made to the lowest responsible bidder within sixty days from the date bids are opened.

3-1.05 Contract Bonds: Within ten days after receipt of the Notice of Award, the successful bidder shall provide the following bonds to the City:

- a. **Performance Bond:** A performance bond to guarantee the faithful performance of the terms and conditions of the Contract by Contractor, which shall be executed in a sum of not less than one-half of the Contract price;
- b. **Labor and Materials Bond:** A labor and materials bond (payment bond) in accordance with Part 6 of Division 4, sections 8000 *et seq.* of the California Civil Code, to guarantee against any and all claims of subcontractors or other third parties furnishing labor, materials, or supplies for the Contract, which shall be executed in a sum of 100% of the Contract price; and
- c. **Material Guaranty Bond:** A material guaranty bond (warranty bond) to serve as surety for the guarantee requirements outlined in Section 6-3.01B, which shall be executed in a sum of not less than one-half of the Contract price.

The bond(s) shall be provided in a form acceptable to the City and issued by a corporate surety in good financial standing and authorized and admitted to transact a surety business in the state of California for the purposes and in the amount(s) stated above.

Whenever the financial or legal status of any surety on any such bond(s) is/are unacceptable to the City, it may make a demand to Contractor for further bond(s) or additional surety, not exceeding the sums originally required. Thereafter, no payment shall be made upon the Contract to Contractor or any assignees of Contractor until such bond(s) or additional surety has/have been provided to the City.

3-1.07 Indemnification and Insurance: Indemnification: Contractor shall defend, hold harmless and indemnify City, its officers, agents and employees, and each and every one of them, from and against any and all actions, damages, costs, liabilities, claims, demands, losses, judgments, penalties, costs and expenses of every type and description, including, but not limited to, any fees and/or costs reasonably incurred by City's staff attorneys or outside attorneys and any fees and expenses incurred in enforcing this provision (hereafter collectively referred to as "Liabilities"), including but not limited to Liabilities arising from personal injury or death; damage to personal, real or intellectual property or the environment; contractual or other economic damages, or regulatory penalties, arising out of or in any way connected with the performance of or the failure to perform the Contract by Contractor, any subcontractor or agent, anyone directly or indirectly employed by any of them or anyone for whose acts any of them may be liable, whether or not such Liabilities are caused in part by a party indemnified hereunder, or such Liabilities are litigated, settled or reduced to judgment; provided, that the foregoing indemnity does not apply to liability for any damage or expense for death or bodily injury to persons or damage to property to the extent arising from (i) the sole negligence, or willful misconduct of, or defects in design furnished by City, its agents, servants, or independent contractors who are directly responsible to City (excluding Contractor), or (ii) the active negligence of City.

The existence of any of the insurance policies or coverages described in this Contract shall not affect or limit any of City's rights hereunder, nor shall the limits of such insurance limit Contractor's liability to the City hereunder. The provisions of this section shall survive any expiration or termination of the Contract.

Insurance: Contractor shall maintain in full force and effect all of the insurance coverage described in and in accordance with the insurance requirements set forth below. Maintenance of such insurance coverage during the entire performance of the Contract is a material element of the Contract. Failure by Contractor to (i) maintain or renew coverage, (ii) provide notice of any changes, modifications, or reductions in coverage, or (iii) provide evidence of renewal, if necessary, may be deemed a material breach of the Contract by Contractor, whereas the City shall be entitled to all rights and remedies at law or in equity. Notwithstanding the foregoing, any failure by Contractor to maintain required insurance coverage shall not excuse or alleviate Contractor from any of its other duties or obligations under the Contract. In the event Contractor retains or utilizes any subcontractors or sub-consultants in performance of the work, Contractor shall assure that any such subcontractor has first obtained, and shall maintain, all of the insurance coverage requirements herein set forth below.

Insurance Requirements:

A. Insurance Policies: Contractor shall maintain and keep in full force and effect, the following policies of insurance with minimum coverage as indicated below and issued by insurers with an AM Best rating of no less than A:VI or a rating otherwise acceptable to the City.

Insurance	Minimum Coverage Limits	Additional Coverage Requirements
1. Commercial general liability	\$5 million per occurrence \$5 million aggregate	Coverage must be at least as broad as ISO CG 00 01 and must include products liability and completed operations coverage which shall continue for a period of three years after acceptance of the work by the City. If insurance applies separately to a project/location, aggregate may be equal to per occurrence amount. Coverage may be met by a combination of primary and umbrella or excess insurance but umbrella and excess shall provide coverage at least as broad as specified for underlying coverage. Completed Operations Coverage can be provided in the form of an endorsement to Contractor's insurance (at least as broad as ISO Form CG 20 37 04 13. See endorsements below for other Additional Insured Requirements. Coverage shall not exclude subsidence.
2. Business auto coverage	\$3 million	Coverage at least as broad as ISO Form Number CA 00 01 covering any auto (Code 1). Insurance shall cover owned, non-owned and hired autos.

3.	Workers' compensation and Employer's Liability	\$1 million	As required by the State of California, with Statutory Limits and Employer's Liability Insurance with limit of no less than \$1 million per accident for bodily injury or disease. The Workers' Compensation policy shall be endorsed with a waiver of subrogation in favor of the City for all work performed by Contractor, its employees, agents and subcontractors.
4.	Contractor's pollution legal liability and/or asbestos legal liability and/or errors and omission	\$1 million per occurrence or claim \$2 million aggregate	If the work involves lead-based paint or asbestos identification/remediation, the pollution liability policy must not contain lead-based paint or asbestos exclusions. If the work involves mold identification, the pollution liability policy must not contain a mold exclusion and a definition of "Pollution" in said policy shall include microbial matter including mold.
5.	Course of construction/builders' risk	Amount of completed value of project without co-insurance provisions	Required for construction projects over \$3 million. The City shall be named as loss payee.

B. Endorsements:

1. All policies shall provide or be endorsed to provide that coverage shall not be canceled by either party, except after prior written notice has been provided to the City in accordance with the policy provisions.
2. Liability policies shall provide or be endorsed to provide the following:
 - a. For any claims related to this Contract, Contractor's insurance coverage shall be primary and any insurance or self-insurance maintained by City shall be in excess of Contractor's insurance and shall not contribute with it. Endorsements at least as broad as 20 01 04 13 or evidence of policy language will be required in non ISO CGL policies.
 - b. **The City of Santa Rosa, its officers, agents and employees are to be covered as additional insureds on the CGL policy.** Additional Insured Endorsements at least as broad as 20 10 04 13 or 20 38 04 13 are required.

C. Verification of Coverage and Certificates of Insurance: Contractor shall furnish City with original certificates and endorsements effecting coverage required above. Certificates and endorsements shall make reference to policy numbers. All certificates and endorsements are to be received and approved by the City before work commences and must be in effect for the duration of the Contract. The City reserves the right to require complete copies of all required policies and endorsements during the duration of the Contract and for a period of three years following City's acceptance of the work.

D. Other Insurance Provisions:

1. No policy required by this Contract shall prohibit Contractor from waiving any right of recovery prior to loss. Contractor hereby waives such right with regard to the

indemnitees.

2. All insurance coverage amounts provided by Contractor and available or applicable to this Contract are intended to apply to the full extent of the policies. Nothing contained in this Contract limits the application of such insurance coverage. Coverage for an additional insured shall NOT be limited to the insured's vicarious liability. Defense costs must be paid in addition to coverage amounts.
3. Self-insured retentions above \$10,000 must be approved by the City. At the City's option, Contractor may be required to provide financial guarantees.
4. City reserves the right to modify these insurance requirements, including limits, based on the nature of the risk, prior experience, insurer, coverage, or other special circumstances.

3-1.18 Contract Execution: The fully executed Contract, original bonds and insurance certificates and endorsements required under the Contract shall be delivered to the City within ten calendar days of Contractor's receipt of the Notice of Award.

The Engineer will supply Contractor with up to ten sets of the Invitation for Bids and Project Plans. At least one complete set of the Invitation for Bids and Project Plans shall be kept at the construction site in good condition and made available to the Engineer at all times. Additional copies of the Invitation for Bids and Project Plans will be provided by the Engineer at Contractor's cost.

3-1.20 Failure to Execute Contract: Contractor's failure to deliver to the City the fully executed Contract within ten calendar days of Contractor's receipt of the Notice of Award shall be cause for the cancellation of the award and the forfeiture of the bid guaranty to the City. If the successful bidder refuses or fails to execute the Contract, the City may award the Contract to the second lowest responsible bidder. If the second lowest responsible bidder refuses or fails to execute the Contract, the City may award the Contract to the third lowest responsible bidder. The refusal or failure by the second or third lowest responsible bidder to deliver to the City the fully executed Contract within ten calendar days of receipt of the Notice of Award to the respective bidder shall likewise be cause for the cancellation of the award and the forfeiture of the bid guaranty of the respective bidder. In its discretion, the City may then re-advertise the project or construct it by day labor.

3-1.21 Return of Bid Guarantees: Within ten days after the opening of bids, the City will return the bid guarantees to all bidders except the three lowest responsible bidders. The bid guarantees of the three lowest responsible bidders will be retained until the Contract has been fully executed. In the event all bids are rejected, all bid guarantees will be returned to the respective bidders.

3-1.22 Subcontractors: The successful bidder shall furnish a list of all subcontractors as required under Sections 2-1.33C & D. The list shall include the name, business address, DIR registration number and the state contractor's license number of each subcontractor on the list and the names of the responsible managing employees whose names appear on the subcontractors' licenses.

4 SCOPE OF WORK

4-1.05 Changes and Extra Work: All changes to the Contract shall be made by written change order only.

All extra work shall be recorded by Contractor on a daily report signed by both the City and Contractor. The “daily reports” shall thereafter be considered the true record of extra work performed. A copy of the daily reports will be furnished to Contractor. Contractor is directed to Section 9-1.04 of this Invitation for Bids.

4-1.05C Compensation for Altered Quantities: Payment and compensation for altered quantities shall conform to the provisions of Section 9-1.06 of the Standard Specifications, except as modified herein.

5 CONTROL OF WORK

5-1.02 Contractor's Copies of Contract Documents: In the event of a conflict in any of the Contract Documents, the order of precedence from highest to lowest shall be as follows:

1. Special Provisions
2. City Standards
3. City Specifications
4. Standard Specifications
5. Standard Plans

5-1.05 Order of Work: The work as shown on the Project Plans and as specified in the Invitation for Bids shall be constructed in a sequence that is satisfactory to and approved by the Engineer.

Contractor shall prepare a work schedule per Section 8-1.02 of the Standard Specifications.

With the exception of trenching, all existing street, street light base, curb and gutter, storm drain, water line, and sewer line work shall be completed before any existing street paving is removed.

Full compensation for the conformance to the requirements of this section is included in the Contract price and no additional allowance will be made to Contractor for this work.

5-1.17 Character of Workers: Contractor is directed to Section 5-1.17 of the Standard Specifications which states:

"If any subcontractor or person employed by the Contractor shall appear to the Engineer to be incompetent or to act in a disorderly or improper manner, he shall be discharged immediately on the request of the Engineer, and such person shall not again be employed on the work."

No additional compensation shall be granted to Contractor in the event City exercises any part of its rights under this section and any and all costs related to such exercise shall be borne by Contractor.

5-1.20 Cooperation with Other Entities: Attention is directed to Section 5-1.20 of the Standard Specifications.

Other construction including but not limited to utility, power, and pipe line relocation, may be in progress by other forces within and adjacent to the project area at the same time work is being performed under this Contract by Contractor.

Contractor shall cooperate with the forces performing other work, to the end that such forces may conduct their operations with as little inconvenience and delay as possible. Contractor shall grant such forces access to the project area as is reasonable and necessary to transport materials and equipment to the site of operations by the other forces.

5-1.20B(4)(a) Offsite Staging Areas and Construction Yards: Attention is directed to Santa Rosa City Code section 20-52.040, Temporary Use Permit.

A Temporary Use Permit shall be obtained for any offsite construction yard on private property to be used for any of the following:

- a. Stockpiling of equipment and/or materials;
- b. Staging of construction;

- c. Placement of work trailers or mobile offices;
- d. Storage of trench spoils; or
- e. Other construction related activities not specifically enumerated above.

5-1.26 Lines and Grades: Contractor shall carefully preserve all bench marks, grade stakes, and all other survey markers. In the case of willful or careless destruction, Contractor shall bear the cost of replacing the markers.

Contractor shall contact the Engineer directly for coordination of survey staking. Written staking requests must be submitted at least two working days in advance of the date and time stakes are needed.

5-1.27B Examination and Audit: Pursuant to California Government Code section 8546.7, any contract with the City involving expenditures in excess of \$10,000 shall be subject to the examination and audit of the California State Auditor for a period of three years after final payment is made to Contractor by City under this Contract. Any such examination and audit will be confined to those matters connected with the performance of this Contract.

5-1.30A Inspection: Contractor shall bear all costs associated with the re-inspection of any defective, rejected or unauthorized work as determined by the Engineer in Engineer's sole discretion. Such costs of re-inspection, including any costs incurred by the City for additional staff time or fees for third-party consultant inspectors, will be deducted from one or more progress payments hereunder.

5-1.36A Property and Facility Preservation: Attention is directed to Section 5-1.36 of the Standard Specifications.

At Contractor's sole expense, all fences, gates, landscaping, drainage ditches, sidewalks, irrigation systems, and any other improvements that are damaged, removed or destroyed because of Contractor's operations, shall be replaced in accordance with City Standards at a minimum and restored to the same or better condition. Concrete surface treatment and score marks shall match adjacent existing concrete improvements.

5-1.36E Obstructions: Attention is directed to Section 5-1.36 of the Standard Specifications and to the possible existence of underground gas mains, high voltage lines, telephone ducts, storm drains and water and sewers systems, the locations of which are not shown on the Project Plans. The determination of the location of these facilities and the cost of repair or replacement in the event of damage to such facilities are the sole responsibility of Contractor.

Should Contractor alter any public utility or private improvements to facilitate its operations or for its sole benefit, which alteration would not be otherwise required, Contractor shall make whatever arrangements are necessary with the owner or controlling authorities, and shall bear all expenses in connection therewith. Any damages to any public utility or private improvement caused by Contractor shall be repaired by Contractor at its sole expense and to the full satisfaction of the Engineer or the controlling authority.

Any subsurface information and data furnished under any part of this Contract are not intended as a representation or warranty but are furnished for information only. It is expressly understood that the City will not be responsible for the accuracy thereof or for any deduction, interpretation or conclusion drawn therefrom by Contractor. The information is made available so that Contractor may have ready access to the same information available to the City and is not part of this Contract.

PRIOR TO STARTING ANY EXCAVATION, CONTRACTOR SHALL (AT LEAST TWO WORKING DAYS IN ADVANCE) CALL UNDERGROUND SERVICE ALERT (USA) toll free at (800) 227-2600 and provide USA with all necessary data relative to the proposed excavation. USA will accept calls

and process information to participating agencies who have underground facilities in the area between the hours of 7:30 a.m. and 5:00 p.m. daily, except Saturdays, Sundays, and holidays. Between the hours of 5:00 p.m. and 7:30 a.m., calls will be recorded and then processed after 7:30 a.m. For emergency situations, after hours, and on Saturdays, Sundays and holidays, Contractor shall contact the owner of the affected facility.

Contractor shall coordinate all work with the appropriate City field personnel. When City work forces are required at the job site to perform Contract items of work, Contractor shall give a minimum of two working days advanced notification to the appropriate field office:

Water Division:	(707) 543-4200
Sewer Division:	(707) 543-4200
Street Division:	(707) 543-3880
Survey Division:	(707) 543-3834

5-1.43 Arbitration: Any references to Arbitration in the Standard Specifications are deleted in their entirety.

6 CONTROL OF MATERIALS

6-2.01 Source of Supply and Quality of Materials: All materials required to complete the work under the Contract shall be furnished by Contractor and shall be free of hazardous substances.

6-3.01 General: Statistical means will not be used by the City for determination of Standard Specification compliance. Whenever both operating range test results and Contract compliance requirements are specified in these special provisions, the operating range requirements shall apply to the individual test results.

6-3.01A Material Submittals: Upon award of the Contract by City, Contractor shall submit to the Engineer a list of all materials proposed to be used on this project and any supporting documentation and/or samples required and source of supply.

For material listed on the "Engineer's List of Approved Items" which is located in the Sewer and Water sections only of the City Standards, the Engineer shall be provided with the name of the manufacturer and model/part number for all material proposed for this project, unless that item has been replaced as shown on the Project Plans or in the Invitation for Bids.

For all other materials used on this project, regardless of the type of work, Contractor shall provide to the Engineer the name of the manufacturer and model/part number along with supporting documentation and/or samples that will allow the Engineer to determine the material's acceptability.

The Engineer reserves the right to reject any proposed material, whether on the City's "Engineer's List of Approved Items" or not. If the City obtains information indicating that a listed item is not performing satisfactorily or is found to be defective, that item will be rejected and Contractor shall submit a replacement for review at no additional cost to the City.

6-3.01B Material Guarantee: Before any contract is awarded, the bidder may be required to furnish samples of materials and detailed descriptions of equipment to be used in the construction of the project. The materials samples may be subjected to the tests provided for in the Standard Specifications or in this Invitation for Bids to determine their quality and fitness for the project. The successful bidder shall unconditionally guarantee project materials and workmanship for a period of one year from the date of recording of the Notice of Completion. The guarantee shall cover 100% of all costs of repairs within the one year period, including all costs of labor, materials, equipment, and incidentals. Except as may be otherwise provided in Section 3-1.05, the successful bidder shall provide a surety bond executed by a corporate surety authorized and admitted to transact a surety business in the state of California in the minimum amount of one-half of the Contract price to cover this guarantee.

6-3.05 Quality Assurance: California Test 216 (Relative Compaction) testing will be modified as follows: A mechanical compactor (Ploog Engineering Co. Model M 100 or equivalent) with 10-pound hammer and split compaction molds shall be used in lieu of the specified manual compaction equipment.

California Test 231 (Nuclear Gage Determination of In-Place Density) will be modified as follows: In-place density and relative compaction may be determined on the basis of individual test sites in lieu of the area concept, at the discretion of the Engineer.

6-4 Water Utility

6-4.01A Construction Water: All water required for the performance of the work shall be provided by Contractor. Prior to obtaining water from the City's water system, Contractor shall obtain a Water

Use Permit from the City of Santa Rosa Water Department and rent a hydrant or bridge meter. Contractor is responsible for the cost of all water and the cost of all deposits, permits and fees.

Contractor is prohibited from operating gate valves or fire hydrants on the City system.

The acquisition of water from the City's water system through un-metered hydrants or other facilities is a violation of City ordinance and State law. The use of water from sources other than the City's water system must be approved by the Engineer in advance of the use.

Citations and fines will be levied for violation of these and other utility regulations and deductions will be made from payments consistent with Section 7-1.02A(1) of the Standard Specifications.

6-4.01B Water Utility Notification: Contractors or parties requiring work of any kind by the City of Santa Rosa Water Department forces shall request such services a minimum of 48 hours in advance of the time such services are desired. Work requests which will involve the City of Santa Rosa Water Department forces for more than eight hours or an extensive number of City parts shall be requested a minimum of seven calendar days in advance.

If it is necessary to terminate or disrupt utility service to any customer, Contractor shall make the request for such work by City forces an additional 72 hours (three additional working days for a total of five working days advance notice) in advance of the time such services are desired to allow affected customers a minimum of 72 hours' notice. Contractors who fail to keep field appointments will be billed for scheduled City of Santa Rosa Water Department crew standby time which was used and the Contractor shall bear the costs incurred by the City of Santa Rosa's Water Department for re-notification of customers.

City of Santa Rosa Water Department crews work a 9/80 schedule. This schedule may prohibit shutdowns for tie-ins on alternating Fridays. After hours work or weekend work may be performed if prior authorization from the Engineer is obtained.

Other than the hours specified in this Invitation for Bids, requests by Contractor for after hours or weekend work is to be avoided whenever possible. Any overtime costs incurred by City for such work shall be borne by Contractor.

Interruption of utilities service to commercial customers shall be coordinated with the customer to minimize disruption to the enterprise to the greatest extent practicable. After notification by the Contractor of the need, the City of Santa Rosa Water Department will contact all commercial customers and inform Contractor accordingly.

6-4.01C Water Facility Damage: All damage caused to the City's water system shall be immediately reported to the Engineer.

Damage caused to the City's water system by Contractor's operations shall be repaired by the Contractor at Contractor's sole expense in a manner satisfactory to the City of Santa Rosa Water Department. Such repairs shall not be charged to the City or any City project. All repair work shall be witnessed and approved by the City of Santa Rosa Water Department prior to backfilling the excavation. The City will require re-excavation if backfilling occurs prior to inspection, which costs shall be borne by Contractor.

Contractor is responsible for, at its sole cost and expense, the repair and remediation of damage to property and facilities caused by any of the following circumstances:

- a. Contractor fails to make a written request for a markout or begins excavation without providing the City of Santa Rosa Water Department a reasonable opportunity to mark facilities;

- b. Contractor destroys markouts;
- c. Contractor fails to perform hand digging or probing for utilities near markouts; or
- d. Contractor fails to use reasonable caution, regardless of whether markouts are present or clear. Reasonable caution includes any efforts to avoid damaging existing facilities, such as when excavating in the vicinity of water mains.

City may, in its discretion, opt to make the repairs for which Contractor is responsible with its own forces. In such cases, the repairs will be made at Contractor's expense in accordance with the emergency repair rate schedule of the City of Santa Rosa Water Department. The City may make repairs whenever restoration of service requires extraordinary speed or special equipment. Contractor will be billed accordingly and City shall have the right and option to withhold payment hereunder, or a portion thereof, for any such costs billed but not promptly paid by Contractor.

6-4.02 Salvage: All valves, hydrants, and other appurtenances of the water system that are the property of City and removed by Contractor shall be delivered to the City's Municipal Services Center (55 Stony Point Road) unless Contractor has obtained specific written approval from the City of Santa Rosa Water Department to otherwise dispose of the materials.

6-4.03 Trade Names and Alternatives: Unless otherwise specified, material and equipment specifications that identify a particular patent, trade name or manufacturer, may be satisfied through substitute materials and equipment accepted by the City. Contractor may offer substitute materials and equipment of equal or better quality to the City. Any such offer shall be made in writing to the Engineer at least four weeks in advance of the time Contractor wishes to order the materials or equipment. Contractor shall include sufficient data which, together with any other information the Engineer may require, will enable the Engineer to determine the acceptability of the materials and equipment. When the substitute materials or equipment necessitate changes to any part of the work, the information shall include drawings and details showing all such changes and Contractor shall perform these changes as a part of any acceptance of substitute materials or equipment. The use of substituted materials and equipment will be permitted only after written acceptance of the materials and equipment by the Engineer. Such acceptance shall not relieve the Contractor from full responsibility for the sufficiency, quality and performance of the substitute materials and equipment.

The City will not, under any circumstances, acknowledge or consider any offers to accept substitute materials or equipment between the dates of public notice of advertisement and the bid opening.

7 LEGAL RELATIONS AND RESPONSIBILITY TO THE PUBLIC

7-1.02A(1) Forfeitures for Health and Safety Violations: Contractor shall comply with all applicable provisions of the Santa Rosa City Code and any failure to do so shall constitute a breach of the Contract. In the event of any violation of the Santa Rosa City Code that may impact public health and safety, including, but not limited to Chapter 17-12, "Storm Water" and Chapter 13-04, "Street Encroachments," City shall have the right to impose a charge against Contractor in an amount equal to \$500.00 per violation per day. Prior to the imposition of any charge hereunder, City shall first provide a written notice to Contractor of the violation and setting forth a reasonable period of time for Contractor to cure the violation(s). In the event Contractor fails to cure any such violation within the time provided, City shall have the right, in addition to all other rights and remedies available to City, to deduct and withhold as a permanent forfeiture by Contractor the appropriate amounts from any payment otherwise due Contractor under this Contract.

7-1.02K(2) Wages: Pursuant to Labor Code sections 1770 *et seq.*, each laborer or mechanic of Contractor or any subcontractor engaged in work on the project under this contract shall be paid not less than the hourly wage rate of per diem wages set forth in the prevailing wage rate schedule published by the Director of Industrial Relations, regardless of any contractual relationship which may be alleged to exist between Contractor or any subcontractor and such laborers and mechanics. A copy of the schedule of prevailing wage rates can be obtained online at www.dir.ca.gov or from the Department of Transportation and Public Works at 69 Stony Circle, Santa Rosa.

Any laborer or mechanic employed to perform work on the public works project under this Contract, which work is not covered by any of the foregoing classifications, shall be paid not less than the prevailing wage rate of per diem wages specified herein for the classification which most nearly corresponds to the work to be performed by the worker.

The foregoing specified prevailing wage rates are minimum rates only, and Contractor may pay any wage rate in excess of the applicable rate.

Pursuant to Labor Code Section 1775, Contractor as a penalty to the owner shall forfeit not more than \$200.00 for each calendar day, or a portion thereof, for each worker paid less than the prevailing wage rate established by the Department of Industrial Relations for such work or craft in which such worker is employed. The difference between such prevailing wage rates and the amount paid to each worker for each calendar day or portion thereof for which the worker was paid less than the prevailing wage rate shall be paid to each worker by Contractor.

Contractor shall only provide prevailing wage reports upon written request from City.

7-1.02K(4) Apprentices: Contractor agrees to comply with Chapter 1, Part 7, Division 2, sections 1777.5 *et seq.* of the California Labor Code. These sections require contractors and subcontractors to employ apprentices in apprenticeable occupations in a ratio of not less than one hour of apprentice work for each five hours of journeyman work (unless an exception is granted in accordance with Section 1777.5), and the contractors and subcontractors shall not discriminate among otherwise qualified employees as apprentices solely on the ground of sex, race, religion, creed, national origin, ancestry, or color. Only apprentices as defined in Labor Code section 3077, who are in training under apprenticeship standards and who have written apprentice agreements will be employed on public works in apprenticeable occupations. The responsibility for compliance with these provisions is fixed with the prime contractor for all apprenticeable occupations.

7-1.02K(6)(a)(1) Notice to Vendors: Attention is directed to the current OSHA Standards. All equipment, tools and materials which are furnished and/or installed as part of this Contract shall meet or exceed the aforementioned standards in order to be considered acceptable.

7-1.02K(6)(b) Excavation Safety: When the digging or excavation occurs during project construction, Contractor shall:

- a. Promptly notify City in writing of the following conditions before any such conditions are disturbed:
 1. Material that the Contractor believes may be hazardous waste as defined in Health and Safety Code section 25117 that is required to be removed to a Class I, Class II or Class III disposal site in accordance with provisions of existing law;
 2. Subsurface or latent physical conditions at the site differing from those indicated in the Invitation for Bids; and
 3. Physical conditions at the site of any unusual nature, materially different from those ordinarily encountered and generally recognized as inherent in the type of work under the Contract.
- b. The City will investigate the conditions and will issue a change order under the terms of the Contract if it finds that the conditions warrant it.
- c. If a dispute arises between City and Contractor as to whether a change order is warranted, Contractor shall not be excused from any scheduled completion date provided for in the Contract, but shall proceed with all work to be performed under the Contract.

7-1.02K(6)(b)(1) Trench Excavation Safety Plans: When the estimated cost for the excavation of any trench or trenches five feet or more in depth will exceed \$25,000.00, Contractor shall submit to the Engineer in advance of excavation a detailed plan showing the design of shoring, bracing, sloping or other provisions to be made for worker protection from the hazard of caving ground during the excavation of such trench or trenches. If such plan varies from the shoring system standards established by the construction safety orders, or if the trench is anticipated to be greater than 20 feet, the plan shall be prepared by a registered civil or structural engineer.

A permit to do the above described work shall be obtained from the State of California, Division of Industrial Safety. Proof of such permit shall be submitted to the Engineer prior to starting the trench work.

Full compensation for complying with the provisions of this section shall be considered as included in the Contract price and no additional allowance will be made for the work.

7-1.02K(6)(d) Confined Space Safety: Any confined space entry for this project, including but not limited to manhole or water storage tank entry, will require a confined space entry permit pursuant to Cal/OSHA regulations as set forth in title 8 California Code of Regulations (CCR) sections 5157 or 5158. Confined space entry shall have the meaning ascribed in title 8 CCR sections 5157 and 5158. For any confined space entry for construction operations regulated by title 8 CCR section 1502, Contractor shall comply with title 8 CCR section 5158, "Other Confined Space Operations." For any other confined space operations, Contractor shall comply with title 8 CCR section 5157, "Permit-Required Confined Spaces."

Attention is directed to the technical specifications in the Special Provisions for information regarding entry to any City maintained confined space. Pursuant to title 8 CCR section 5157, Contractor is required to obtain any available information regarding hazards and operations for any City maintained confined spaces. The City maintained Confined Space Entry Manual is available

for viewing at the City of Santa Rosa Water Department or Transportation and Public Works Department office at 69 Stony Circle, Santa Rosa.

Contractor shall immediately inform the Engineer of any previously unidentified hazards confronted or created during confined space entry.

7-1.02L(2)(a) Patents and Royalties: All fees, royalties, or claims for any patented invention, article, process or method that may be used upon or in any manner connected with the work under this Contract shall be paid by Contractor. Contractor and its sureties shall protect and hold harmless City and its officers, agents, and employees from any and all demands made for such fees royalties or claims brought or made by any third party, and before the final payment is made on the account of the Contract, Contractor shall, if requested by City, furnish acceptable proof of a proper release from all such claims and liabilities.

Should Contractor, its officers, agents, or employees, or any one of them be enjoined from furnishing or using any invention, article, material, or plans supplied or required to be supplied or used under the Contract, Contractor shall promptly substitute other articles, materials, or appliances in lieu thereof of equal efficiency, quality, finish, suitability, and market value, and satisfactory in all respects to the Engineer. In the event that the Engineer elects, in lieu of such substitution, to have supplied and to retain and use any such invention, article, materials, or plans as may be required to be supplied by the Contract, Contractor shall pay such royalties and secure such valid licenses as may be requisite and necessary for City, its officers, agents, and employees, or any one of them to use such invention, article, materials, or appliance without being disturbed or in any way interfered with by any proceeding in law of equity on account thereof. Should Contractor neglect or refuse to make the substitution promptly or to pay such royalties and secure such licenses as may be necessary, then in that event the Engineer shall have the right to make such substitutions or City may pay such royalties and secure such licenses and charge Contractor even though final payment under the Contract may have been made.

7-1.02M(3) Mined Materials: California Public Contract Code section 20676 prohibits surface mining operators which are subject to the Surface Mining and Reclamation Act of 1975 (SMARA) from selling California mined construction material to the City unless the operator is identified in a list referred as the **3098 List**. The List, which is maintained by the Department of Conservation's Office of Mine Reclamation (OMR), changes throughout the year and can be viewed at the OMR website: http://www.consrv.ca.gov/OMR/ab_3098_list/index.htm. To confirm whether or not a specific operator is on the List at any given time, Contractor shall call the OMR at (916)323-9198.

7-1.03A Maintaining Traffic: Attention is directed to Sections 7-1.04 of the Standard Specifications and to the following modifications thereof.

If construction is within City owned right-of-way, provisions shall be made for the safe passage of public traffic through the work site at all times consistent with the requirements of Santa Rosa City Code Chapter 13-04.

Except for projects to be performed under a minor contract, Contractor shall install and maintain project identification signs at each end of the project or as directed by the Engineer two weeks prior to any construction activity. City shall furnish the appropriate sign panels upon request from Contractor. To mount the sign panels, Contractor shall furnish and install 4" X 4" posts or mount by other appropriate methods as approved by the Engineer. These sign panels shall be returned to the City Corporation Yard at 55 Stony Point Road after completion of the project.

Two weeks prior to any construction activity, advance notice signs for road closures shall be furnished and installed by Contractor at each end of the project and shall remain in place throughout the duration of the subject closure. Details of panel construction and lettering shall be approved by the Engineer.

Contractor shall furnish, install, and maintain at its expense all barricades, signs, lights, and other devices necessary to adequately warn of any obstructions to the traveled and pedestrian way and provide flaggers as necessary for the safety of public traffic and pedestrians and to provide access to property adjacent to the work site and Contractor shall comply with the Americans with Disabilities Act of 1990 (42 U.S.C. 12101, *et seq.*) (ADA) and any regulations and guidelines issued pursuant to the ADA.

Contractor shall comply with the current edition of the California Manual of Uniform Traffic Control Devices (CA MUTCD) for all items related to traffic within the work site.

Rain and other occurrences that may cause the suspension or delay of the work shall in no way relieve Contractor of its responsibility to provide traffic control and public access through the work site as specified herein. At all times, Contractor shall keep at the work site such materials, forces and equipment as may be necessary to keep roads, streets, and driveways within the work site open to traffic and in good repair and shall expedite the passage of such traffic, using such forces and equipment as may be necessary.

Should Contractor fail, in the opinion of the Engineer, to provide all the materials, forces and equipment necessary to maintain traffic through the work site as set forth herein, City may take steps necessary to remedy any such failure, including but not limited to causing such work to be performed and/or suspending any further work under the Contract. Any such remedial cost and expense incurred by the City, plus an administrative charge of 15%, shall be immediately due and payable by Contractor and may be deducted from any amounts owed to Contractor hereunder. In the event there are insufficient sums owed to Contractor hereunder to cover the foregoing costs and charges, City shall have the right to pursue any other remedy to recover the same, including but not limited to, proceeding against any surety or bond in favor of City. City's rights under Section 7-1.02 are intended to be in addition to and not in lieu of any charges imposed by City against Contractor under Section 7-1.02A(1) above for violations of the Santa Rosa City Code.

Contractor shall be responsible for informing emergency response agencies operating within the area of the work of obstructions to either public or private roads caused by reason of Contractor's operations hereunder.

Contractor shall make provisions for the safe passage of pedestrians around the project work site at all times.

8 PROSECUTION AND PROGRESS

8-1.01A Assignments: Once awarded, this Contract shall not be transferred, assigned, or sub-contracted, except as herein expressly provided without the prior written consent of the City in the City's sole and absolute discretion. See Section 5-1.12 of the Standard Specifications.

8-1.04B Standard Start: Contractor shall begin work within ten calendar days after the date authorized in the Notice to Proceed and shall diligently prosecute the Contract to completion before the expiration of:

60 WORKING DAYS

8-1.05 Time: Working days will be counted beginning with the day the Contractor begins work or with the tenth day after the date authorized in the Notice to Proceed, whichever occurs first.

Unless otherwise directed by Engineer, Contractor shall not conduct any activities that generate noise earlier than 7:00 a.m. or later than 7:00 p.m.

If the Contractor completes all work by October 31, 2016, the Contractor shall receive an incentive payment for early completion of \$25,000.00.

For each day the Contractor completes prior to 1:30 p.m. all work scheduled for that given day as shown on the schedule, the Contractor shall receive \$500.00.

City offices are closed every other Friday. However, materials testing, survey, water system and inspection services will be provided on those days (except holidays). Any additional costs that may be associated with office closure on every other Friday shall be the sole responsibility of Contractor and no additional compensation shall be allowed therefor.

8-1.10 Liquidated Damages: Contractor hereby agrees that Contractor shall pay to the City liquidated damages for each and every calendar day delay over and above the number of working days prescribed above for finishing the work in the amount shown in Section 8-1.10 of the Standard Specifications.

9 MEASUREMENT AND PAYMENT

9-1.04 Force Account Work: All work done on a force account basis shall be recorded daily on report sheets prepared by Contractor and signed by both the Engineer and Contractor. Such reports shall thereafter be considered the true record of force account work performed during the project. Such reports shall be furnished to the Engineer and a copy retained by Contractor.

All extensions of labor, equipment, and material costs shall be completed by Contractor and submitted to the Engineer within 30 days of the completion of the extra work. Completed and extended extra work reports received later than the times herein prescribed may be deemed invalid and rejected without payment at the discretion of the Engineer.

9-1.16 Progress Payments – Major Contracts: Once each month for progress pay purposes for “major contracts” as defined in Santa Rosa City Code section 3.44-020, the City will prepare a written estimate of the total amount of completed work and accepted materials purchased by Contractor but not installed. The City shall retain five percent of such estimated value of the completed work and the unused materials and pay Contractor the balance after deducting all previous payments and all sums to be retained under the provisions of the Contract. No such estimate or payment shall be required to be made when, in the judgment of the Engineer, the work is not proceeding in accordance with the provisions of the Contract or when, in the Engineer’s judgment, the total value of the completed work since the last estimate is less than \$500.00. No such estimate or payment shall be construed to be an acceptance of any defective work or improper materials.

Within 15 days after the completion of the work, the Engineer will prepare a written semi-final estimate of the proposed final quantities of work completed under the Contract and the value of such work and will submit such estimate to Contractor. The City shall retain five percent of such estimated value of the work done and shall pay to Contractor the balance after deducting all amounts to be retained under the provisions of the Contract.

The City may, at its option and at any time, retain out of any amounts due Contractor sums sufficient to cover any unpaid claims of City or others, provided that sworn statements of all non-City claims shall have been filed with the Director of Finance.

The City shall not make payments under this section for “minor contracts” as defined in Santa Rosa City Code section 3.44-020.

9-1.16E(6) Substitution of Securities for Withheld Amounts: Pursuant to Public Contract Code section 22300, securities may be substituted for any moneys withheld by City to ensure performance under this Contract, provided that substitution of securities provisions shall not be required in contracts in which there will be financing provided by the Farmer’s Home Administration of the United States Department of Agriculture pursuant to the Consolidated Farm and Rural Development Act (7 USC sections 1921 *et seq.*), and where federal regulations or policies or both do not allow the substitution of securities. At the request and expense of Contractor, securities equivalent to the amount withheld shall be deposited with the City, or with a state or federally chartered bank as the escrow agent, which shall then pay such moneys to Contractor. The Director of Finance is authorized to execute substitution of securities agreements on behalf of the City. The City will return the securities to Contractor upon satisfactory completion of the Contract as determined by City in its sole discretion and the resolution of all outstanding claims against the securities. Contractor shall be the beneficial owner of any securities substituted for moneys withheld and shall receive any interest thereon.

Securities eligible for investment under this section shall include those listed in Government Code section 16430, bank or savings and loan certificates of deposit, interest bearing demand deposit

accounts, standby letters of credit or any other security mutually agreed to by Contractor and the City, provided that the substituted security is equal to or not less than five percent of the Contract amount.

Security substitutions must be submitted by Contractor and approved by City prior to the time of the first progress payment to be made under the Contract. No other method of substituting securities for retention will be accepted. The security substitution shall be done only upon execution of an agreement satisfactory to City which includes the following provisions:

- a. The amount of securities to be deposited;
- b. The terms and conditions of conversion to cash in case of the default of Contractor;
and
- c. The procedure for return of securities upon completion of the Contract.

9-1.17D Final Payment and Claims: The processing of payment of the final estimate shall not be commenced less than 35 days after the date of recording of the Notice of Completion with the County Recorder's Office. Contractor is advised that it takes approximately ten days for a check to be issued following a request for payment.

Contractor shall submit its written statement of all claims for additional compensation under the Contract to the Engineer within 15 days after submission to Contractor of the semi-final estimate.

If Contractor does not file a claim within the 15 day period, or upon Contractor's approval, the Engineer will issue a final written estimate and the City shall pay to Contractor the entire sum due after deducting all previous payments, if any, and all amounts to be retained under the provisions of the Contract.

If Contractor files a claim within the 15 day period, the Engineer shall then consider and investigate such claim, and shall make such revision in the final quantities as the Engineer may find to be due, and shall then make and issue a final written estimate. The City will pay the amount due, after deducting all previous payments, if any, and amounts to be retained under the provisions of the Contract.

Any and all prior partial estimates and payments shall be subject to correction in the final estimate and payment.

The final estimate shall be conclusive and binding against both parties to the Contract on all questions relating to the performance of the Contract and the amount of work done thereunder and compensation therefor, except in the case of gross error.

9-1.17D(3) Final Determination of Claims: Claims filed by Contractor shall be in sufficient detail to enable the Engineer to determine the basis and amount of the claims. If additional information is required by the Engineer, Contractor shall provide such information to the Engineer no later than the 15th day after receipt of the written request from the Engineer. If the 15th day falls on a weekend, holiday, or day City offices are closed, then the information shall be provided to the Engineer no later than close of the next business day. Failure to submit the requested information to the Engineer within the time specified will be sufficient cause for denying the claim.

Contractor shall keep full and complete records of the costs and additional time incurred for any work for which a claim for additional compensation is made. The Engineer or any designated claim investigator or auditor shall have access to those records and any other records as may be required by the Engineer to determine the facts or contentions in the claims. Failure to grant access to such records shall be sufficient cause for denying the claims.

Claims submitted by Contractor shall be accompanied by a notarized certificate containing the following language:

Under the penalty of law for perjury or falsification and with specific reference to the California False Claims Act, Government Code sections 12650 *et seq.*, the undersigned,

(Name)

_____ of
(Title)

(Contractor)

hereby certifies that the claim for additional compensation made herein is supported by a true statement of the actual costs incurred and time expended on this project, and is fully documented by records maintained by Contractor.

Dated _____

/s/ _____

Subscribed and sworn before me this _____ day of

Notary Public

My Commission Expires _____

Failure to submit the notarized certificate will be sufficient cause for denying the claim.

Any claim for overhead expenses, in addition to being certified as stated above, shall be supported by an audit report of an independent Certified Public Accountant. Any such overhead claim shall also be subject to audit by the City at its discretion.

Any costs or expenses incurred by the City in reviewing or auditing any claims that are not supported by Contractor's cost accounting or other records shall be deemed to be damages incurred by the City within the meaning of the California False Claims Act.



TECHNICAL SPECIFICATIONS

FOR

NEIGHBORHOOD STREETS INITIATIVE SLURRY SEAL 2016

CONTRACT NO. C02071

2016

SECTION 12 TEMPORARY TRAFFIC CONTROL

12-1 General

12-1.01 General: Construction area traffic control devices shall be installed and maintained in accordance with the applicable sections of these Special Provisions, the Standard Specifications, the current Edition of the California Manual on Uniform Traffic Control Devices (CA MUTCD), the Americans with Disabilities Act (ADA) and as directed by the Engineer.

12-1.03 Flagging Costs: The first paragraph of Section 12-1.03, "Flagging Costs" is amended to read:

The cost of furnishing all flaggers, including transporting flaggers, to provide for passage of public traffic through the work under the provisions in Section 7-1.08, "Public Convenience", and Section 7-1.09, "Public Safety", shall be considered as included in the contract lump sum price paid for traffic control and no additional allowance will be made therefor.

12-3 Traffic-Handling Equipment and Devices

12-3.01 General: Prior to commencing construction which will affect existing vehicular and pedestrian traffic, the Contractor shall submit for review by the Engineer, Traffic Control Plans on 11" x 17" sheets of paper which contains only information specifically related to work zone vehicular and pedestrian traffic control. If the Contractor proposes to use the current edition of the CA MUTCD published by Caltrans in lieu of a traffic control plan, in specific work operations, they shall submit in writing for consideration which Typical Application Diagram will be used and how it will be applied for each work operation. Traffic Control Plans or proposals shall be submitted for review at least two weeks prior to implementation.

Traffic Control Plans shall contain a title block which contains the Contractor's name, address, phone number, project superintendent's name, contract name, dates and hours traffic control will be in effect, and a space for review acknowledgment.

The content of the Traffic Control Plan shall include, but is not limited to, the following:

1. Show location and limits of the work zone.
2. Give dimensions of lanes affected by traffic control that will be open to traffic.
3. Indicate signing, cone placement, and other methods of delineation and reference to appropriate City or Caltrans Standards.
4. Dimension location of signs and cone tapers.
5. Identify side streets and driveways affected by construction and show how they will be handled.
6. Show how pedestrian traffic will be handled through the construction site. Pedestrian pathways through the work zone shall be in compliance with the requirements of ADA during and after work hours.

7. Demonstrate how two-way traffic will be maintained.

No work except for installation of project identification signs will be allowed to commence prior to approval of the Work Zone Traffic Control Plans.

12-4 Maintaining Traffic

12-4.01 Maintaining Traffic:

1. The full width of the traveled way shall be open for use by public traffic on Saturday, Sundays and designated legal holiday(s), after 4:00 p.m. on Fridays and the day preceding designated legal holidays, and when construction operations are not actively in progress; unless work has specifically been authorized by the Engineer.
2. The location of traffic control signing, barricades, and other facilities shall be monitored frequently (four to five times per day) by the Contractor to verify their proper location. All traffic signal and other traffic control devices shall be maintained at all times.
3. You shall conduct operations so as to cause the minimum obstruction and inconvenience to traffic and to business, multiple dwelling units and residences adjacent to the work.
4. When construction activities will prevent vehicle access to individual driveways you shall notify the affected businesses and residents per Section 12-1.03, "Traffic Control", of these Special Provisions. **Full access shall be provided to all driveways during non-working hours.**

12-4.01A Construction Traffic: You shall submit a trucking route along with the traffic controls plans for approval by the Engineer. The route must minimize traffic on residential streets that are not part of the project.

Existing pavement damaged by your operations and not shown to be replaced shall be replaced at the Contractor's expense, per City Standards and to the satisfaction of the Engineer.

12-4.02 Closure Requirements: Attention is directed to Section 7-1.08, "Maintaining Traffic", to Section 5-1.05, "Order of Work," of these Special Provisions.

Exact locations of Project Identification signs and Advance Notice signs (Section 7-1.08 "Maintaining Traffic") shall be determined in the field by the Engineer.

Lane closures will be permitted between the hours of 8:30 a.m. and 4:00 p.m. only. Only one lane at a time may be closed and no lanes shall be closed at any other hours unless specifically approved by the Engineer. You shall maintain vehicle access to homes and other properties at all times while work is in progress.

You shall not park construction vehicles employee vehicles, stage materials or stockpiles in front of any business or residential driveway access and you shall maintain access to private parking lots within the block where work is in progress. Construction vehicles

shall not be left running for any length of time if parked in front of a business or residential unit.

On identified local/residential streets you will normally be allowed use of each block (between nearest intersections) for their sole use, without the need to provide 2-way traffic through that block. You will be required to maintain vehicle access to homes and other properties within the block where work is in progress.

You shall keep the City of Santa Rosa Fire Department informed regarding the closure of any traveled way. At a minimum, the Contractor shall call the Fire Department at 543-3535 **and** the Communications Center at 543-3666 **daily** to report any traveled way closure. This means immediately upon closure for that day and again immediately after removal of the closure. For closures over multiple days, the daily notification still applies. This requirement does not apply for single lane closures on multiple lane streets.

You shall notify Sonoma County Transit at (707) 585-7516, Superintendent of Golden Gate Transit at (415) 257-4442, Santa Rosa City Bus at (707) 543-3922, Sonoma County Airport Express at (707) 837-8700, the local Postal Service at (707) 526-0113 and Santa Rosa Recycling and Collection at (707) 586-8234 5 calendar days prior to any lane closures or restrictions in turning movements.

If you have an approved Traffic Control Plan that includes road closures, they shall maintain vehicular access to homes and other properties where work is in progress within the closure area.

Where necessary, and only after receiving written approval from the Engineer, you may temporarily suspend curb side parking in their immediate work zone. Notification to businesses and residents shall be hand delivered at least 72 hours prior to construction in the affected areas.

Notification shall be per Section 121 and as follows:

1. A notice placed on the front door of each home or business where curb side parking will be suspended and attempt made to notify each business or resident verbally that work will be underway within the block and that curb side parking will be suspended during stated working hours and request that vehicles be parked out of the roadway by 8:00 a.m. Service of notice shall not bar use of cars within the block, as individual plans change and emergencies arise.
2. Type 1 barricades every 50(-100 feet depending on street) feet adjacent to the curb where parking will be suspended with a notice posted on the barricade stating specific dates and times that curb side parking will be temporarily suspended. If work will not take place in the posted area, then Contractor shall remove "No Parking" notices.

The Contractor shall maintain vehicle access to all homes and other properties along the work zone. During slurry operations the Contractor will be allowed to temporarily suspend vehicle access to a limited number of driveways when approved by the Engineer. When approved by the Engineer and at least 72 hours prior to suspending access to any driveway, the Contractor shall give both written and verbal notice to the affected businesses and residents and place barricades adjacent to the driveways with posted notices stating the specific dates and times of the suspension for that area. The notice shall also indicate an alternate parking location. Suspension of access to

driveway will be permitted only as approved by the Engineer and only between the hours of 8:00 am and 4:30 pm.

Cross streets will require maintenance of at least one-half (1/2) width of each street for traffic purposes, unless a parallel route is approved by the Engineer. Flagging will only be allowed between the hours of 8:30 am and 4:00 pm.

Barricades and flaggers shall be positioned to allow safe turns at intersections and curves.

You shall maintain traffic control as necessary and as directed by the Engineer for "cat-tracking" operations by City Forces. Flaggers, barricades, signing, etc., shall remain in place for protection of City personnel until such time as all temporary lane delineation is complete.

12-7 Temporary Pedestrian Walkways

12-7.01 Pedestrian Traffic Control: You are directed to Chapter 6D, Pedestrian and Worker Safety, in the CA MUTCD, the improvement plans and these Special Provisions.

Pedestrians shall be provided with a safe convenient and accessible path that, at a minimum, replicates the most desirable characteristics of the existing sidewalk, path or footpath. At no point along the road shall the sidewalks on both sides of the road be closed at the same time.

You shall construct and maintain temporary pedestrian pathways through the work zone, where required, that shall be in compliance with the requirements of the Americans with Disabilities Act (ADA), and the CA MUTCD.

Pedestrian routes shall not be impacted for the purposes of any non-construction activities such as parking of vehicles or equipment, or stock piling of materials. Pedestrians shall not be led into conflicts with work site vehicles, equipment or operations.

Pedestrian routes shall be open and accessible at the end of the work day unless an alternate ADA compliant route has been approved by the Engineer. The construction of curb ramps and/or long sections of sidewalk do not alleviate the Contractor from this requirement.

12-9 Measurement and Payment

12-9.01 Payment: **Traffic Control** shall be paid for at the contract **lump sum** price, which price shall include full compensation for furnishing all labor, materials, tools and equipment, and doing all work involved in **vehicular and pedestrian** traffic control, including but not limited to, providing, placing, maintaining, and removal of temporary paths and/or ramps, temporary relocation of regulatory signs, changeable message boards, project and public notification signs, flagging, excavation, compaction, furnishing, and placement of asphalt concrete and/or PCC, barricades, toe-rails, hand rails, complying with CA MUTCD Standards for Pedestrian Safety, coordination efforts, notification per Sections 12-4.02 and 121 of these technical specifications and any other items necessary for vehicle and pedestrian traffic control not specifically enumerated in the plans or these specifications, and no additional allowance will be made therefor.

SECTION 13 WATER POLLUTION CONTROL (EXEMPT PROJECTS ONLY)

13-1 General

13-1.01A: Water Pollution Control shall be performed in accordance with Section 13, Water Pollution Control, of the Standard Specifications and these technical specifications. In addition, construction activities shall comply with:

1. The California Water Quality Control Board, North Coast Region Order No. R1-2009-0050, National Pollutant Discharge Elimination System Municipal Storm Water Permit, Part 8 – Development Construction Program, Sections 1 through 5, commonly referred to as the “Storm Water Permit”. A copy of the Storm Water Permit is available for review at the City of Santa Rosa Transportation and Public Works Department, 69 Stony Circle, Santa Rosa, CA, and at www.srcity.org/stormwaterpermit.
2. The California Stormwater Quality Association Storm Water BMP Handbook for Construction (CASQA Handbook). BMPs shall be selected, installed and maintained in accordance with the latest edition. A copy of the handbook can be viewed at the City of Santa Rosa Department of Transportation and Public Works office at 69 Stony Circle or downloaded from CASQA, <http://www.casqa.org/>.

In this technical specification the CASQA Handbook BMP numbers are appended to the associated Standard Specification sections. If a conflict occurs the CASQA Handbook BMP's shall govern.

13-2 Water Pollution Control Program

13-2.01B Submittals: The program to control water pollution required to be submitted under this section of the Standard Specifications shall include a spill contingency plan that establishes clean-up procedures that will be followed in the event of a spill of potentially hazardous, toxic, or polluting materials.

13-2.04 Payment: The City Pays you to prepare Water Pollution Control Program as the lump sum price for Water Pollution Control and as follows:

13-3 Storm Water Pollution Prevention Plan

13-3.01A Summary: This project is exempt from the State Water Resources Control Board General NPDES Permit for the Discharge of Storm Water related to Construction Activities (Construction General Permit), and not required to have a Storm Water Pollution Prevention Plan (SWPPP), therefore Section 13-3, Storm Water Pollution Prevention Plan, of the Standard Specifications does not apply to this project.

13-4 Job Site Management

13-4.03B: Spill Prevention and Control / CASQA Spill Prevention and Control (BMP WM-4):

If a spill occurs at the construction site and the contractor does not take immediate and adequate steps to contain and clean up the spill, especially if rain is threatening or if a discharge to a storm drain or creek could occur, the City shall have the right, in its sole and absolute discretion, to clean up the spill using City forces or an independent contractor. The cost of any such cleanup, in addition to recovery of any penalty or fine imposed upon the City, plus an administrative charge of fifteen percent (15%) of the costs incurred by the City, shall be deducted from any amounts owed to Contractor hereunder.

In the event there are insufficient amounts owed to Contractor hereunder to cover the foregoing costs and charges, the City shall have the right to pursue any other remedy to recover same, including, but not limited to, proceeding against any surety or bond in favor of the City. The City's rights under this section are intended to be in addition to and not in lieu of any imposed by the City against Contractor for violations of City Code Chapter 17-12, "Storm Water".

13-4.03C(2): Material Storage / CASQA Material Delivery and Storage (BMP WM-1)

13-4.03C(3): Stockpile Management / CASQA Stockpile Management (BMP WM-3):

Do not block storm water flows.

13-4.03D(1): Waste Management / CASQA Solid Waste Management (BMP WM-5): The Contractor shall dispose of all trash, rubbish, and waste materials of any kind generated by the contractor, subcontractor, or any company hired by the Contractor on a daily basis.

13-4.03D(3): Concrete Waste / CASQA Concrete Waste Management (BMP WM-8): Ensure the containment of concrete washout areas and other washout areas that may contain pollutants so there is no discharge into the underlying soil and onto the surrounding areas.

13-4.03D(4): Sanitary and Septic Waste / CASQA Sanitary and Septic Waste Management (BMP WM-9): Sanitation facilities must be maintained periodically by a licensed service to keep them in good working order and prevent overflows. Portable toilets are required to have secondary containment.

13-4.03D(5): Liquid Waste: Liquid waste includes water generated from excavation dewatering. Minimize transfer piping by locating containers near the excavation to be dewatered while protecting the containers from moving vehicles and equipment.

13-4.03E(1): Water Control and Conservation / CASQA Water Conservation Practices (BMP NS-1 and NS-2)

13-4.03E(3): Vehicle and Equipment Cleaning / CASQA Vehicle and Equipment Cleaning (BMP NS-8)

13-4.03E(4): Vehicle and Equipment Fueling and Maintenance / CASQA Vehicle and Equipment Fueling (BMP NS-9), and CASQA Vehicle and Equipment Maintenance (BMP NS-10)

13-4.03E(7): Paving, Sealing, Sawcutting, Grooving, and Grinding Activities: As listed in Part 9, sections 4 and 5 of the Storm Water Permit, the following additional BMPs shall be implemented for street paving, repaving, reconstruction, patching, digouts or resurfacing.

1. Restrict paving and repaving activity to exclude periods of rainfall or predicted rainfall unless required by emergency conditions;
2. Install gravel bags and filter fabric or other appropriate inlet protection at all susceptible storm drain inlets and manholes to prevent paving products and tack coat from entering the storm drain;
3. Prevent the discharge of release agents including soybean oil, other oils, or diesel to the storm water drainage system or watercourses;
4. Minimize non-storm water runoff from water use for the roller and for evaporative cooling of the asphalt;
5. Clean equipment over absorbent pads, drip pans, plastic sheeting or other material to capture all spillage and dispose of properly
6. Collect liquid waste in a container, with a secure lid, for transport to a maintenance facility to be reused, recycled, or disposed of properly **13-4.03D(5)**;
7. Collect solid waste by shoveling and vacuuming or sweeping and securing in an appropriate container for transport to a maintenance facility to be reused, recycled, or disposed of properly **13-4.03D(5)**;
8. Cover “cold-mix” asphalt (i.e., pre-mixed aggregate and asphalt binder) with protective sheeting during a rainstorm **13-4.03C(3)**;
9. Cover loads with tarp before haul-off to a storage site, ensuring that trucks are not overloaded;
10. Minimize airborne dust by using water spray during grinding **14-9.03** and;
11. Avoid stockpiling soil, sand, sediment, asphalt material and asphalt grindings materials or rubble in or near storm water drainage system or watercourses **13-4.03C(1)**,

13-4.03F: Sweeping / CASQA Street Sweeping and Vacuuming (BMP SE-7)

13-4.04 Payment: Job Site Management shall be paid for at the contract lump sum price for Water Pollution Control.

13-6 Temporary Sediment Control

13-6.03C: Temporary Drainage Inlet Protection / CASQA Storm Drain Inlet Protection (BMP SE-10)

13-6.04: Payment: Temporary Sediment Control shall be paid for at the contract lump sum price for Water Pollution Control. The contractor pays all maintenance costs.

[Revised: 05/18/15CDA STD2010]

SECTION 14 ENVIRONMENTAL STEWARDSHIP

14-9.03 Dust Control

14-9.03A General: Sweeping per section 14-9.03C shall also be performed to prevent and alleviate dust.

Sweeping, covering stockpiles, applying water, and/or dust palliative, to control dust caused by public traffic is not change order work.

14-9.03C Construction: All dust-producing work and unpaved construction sites shall require a minimum watering in the middle and ending of each workday. The frequency of watering shall increase if dust is airborne. Watering shall not produce runoff.

Contractor shall maintain dust control to the satisfaction of the Engineer, 7 days a week, 24 hours per day.

At the end of each work day the Contractor shall thoroughly sweep all streets in the work zone to minimize airborne dust.

At the end of each work week the Contractor shall sweep all streets in the work zone with a commercial street sweeping truck equipped with a rear pick up broom.

At the Engineer's discretion additional sweeping or watering may be required, including the use of a commercial street sweeping truck equipped with a rear pick up broom, at any time or place.

14-9.03D Payment: Full compensation for conforming to this section shall be considered as included in the prices paid for the various contract items of work and no additional compensation will be allowed.

14-10.01 General: The Contractor shall dispose of all portland cement concrete and asphalt concrete, generated from removal or demolition activities on the project, at a recycler for these materials. The Contractor shall provide receipts verifying delivery and approximate quantity (in tons) of the material delivered to a material recycler.

All other excess materials from the project shall become the property of the Contractor and shall be disposed of by him, at his expense.

14-10.02A(1) Submittals: Submit a Solid Waste Disposal and Recycling Report prior to final acceptance of work performed under the Contract. Show the types and amounts of project-generated solid waste taken to or diverted from landfills or reused on the project.

Submit a Solid Waste Disposal and Recycling Report prior to Contract acceptance. Show the types and amounts of project-generated solid waste taken to or diverted from landfills or reused on the project.

14-10.02D Payment: Full compensation for material recycling as specified herein shall be considered as included in the contract prices paid for various items of work, and no additional compensation will be allowed therefor.

14-11 Hazardous Waste and Contamination

14-11.02F(3) Hazardous Waste Transport and Disposal: All soil from excavations on this project shall be considered contaminated and shall be transported to and disposed of at an approved landfill.

You will furnish completely filled out hazardous waste manifests ready for the Engineer's signature.

You are responsible for disposal of contaminated soil, including trucking, disposal site fees, and additional testing if required by disposal sites. You shall comply with all disposal regulations, such as City, County, and/or State permits and licenses, as may be required.

Prior to disposal of any excess material from the work site, submit to the Engineer written authorization for such disposal and entry permission signed by the approved disposal site. You shall disclose in landfill applications the existing conditions and the written disposal and entry permission shall include acknowledgement of such disclosure.

Pre-construction soil sampling as described in section 14-11.06 of these Technical Specifications indicated the presence of petroleum hydrocarbons such as motor oil and diesel, heavy metals, and other contaminants. Based on these results the City has obtained letters of acceptance for disposal of soil from this project at the following landfills:

City obtained conditional letters of landfill acceptance are included in Section A, Fees and Permits, of these Technical Specifications for the Contractor's use and are not considered a part of the contract documents. You shall be aware of disposal limitations at the landfills based on weather, time of year, etc.

You shall be responsible for separating asphalt, concrete, base rock, asbestos cement pipe, and other non-contaminated debris from the soil prior to loading the soil for transport to disposal sites. Dispose of asphalt, concrete, and base rock at a recycler of these materials as specified in Section 124 of these Special Provisions. Dispose of asbestos cement pipe as specified in Section 15-5 of these Technical Specifications.

14-11.06: Department Generated Contaminated Soil: Based on communications with the Regional Water Quality Control Board, and analytical tests of project soils, this project runs adjacent to or within an area that has contained subsurface petroleum hydrocarbon contamination.

(Note to Editor: List analytical reports like the example below)

*Analytical test results are documented in a Summary Report "Pre-Construction Hazardous Materials Assessment" dated October 10, 2012, prepared by ECON, and to soil sampling results analyzed by K Prime laboratory on June 11, 2014. The report and test results are on file with the City of Santa Rosa Public Works Department, 69 Stony Circle, Santa Rosa, CA 95401. A copy of the ECON report and K Prime test results are available from the City for the Contractor's use and are not part of the contract documents. An electronic copy (PDF) of this report and test results may be obtained at the following ftp site (copy exactly as written including the underscores) or via email from the City by request and is **not** considered part of the contract documents:*

ftp://ftp.ci.santa-rosa.ca.us/pw_customer_service/MontgomeryDriveSewerWaterReplacement/

In general, the Contractor shall maintain awareness of potential signs of soil and groundwater contamination throughout the project limits and shall notify the City immediately upon discovery of any potential soil or groundwater contamination.

The Contractor shall provide 40-hour OSHA-HAZWOPER certified workers in the contaminated area and provide a field Site Safety Officer that is also an 8-hour OSHA-HAZWOPER

Supervisor trained to directly oversee the contaminated materials removal and handling operation. All workers in this circumstance must have their initial and annual renewal refresher training, medical clearance and personal protection equipment in accordance with 8CCR Section 5192.

[Revised: 05/18/15-DCM STD2010]

SECTION 15 EXISTING FACILITIES

15-2.02C Remove Existing Traffic Stripes and Pavement Markings: You shall remove all traffic stripes, pavement markings or any other traffic markings located within the project resurfacing limits to the satisfaction of the Engineer and in accordance with Section 84 of the Standard Specifications, City Standards, and the Project Plans.

15-2.02D Remove Existing Pavement Markers: : You shall remove all pavement markers located within the project resurfacing limits to the satisfaction of the Engineer and in accordance with Section 84 of the Standard Specifications, City Standards, and the Project Plans.

15-2.10C Manholes, Frames, Covers, and Valve Boxes: Existing manhole frames and covers, valve boxes, and monument frames and covers shall be covered prior to slurry seal.

15-2.13 Payment: Remove Existing Traffic Stripes and Pavement Markings shall be paid for at the contract **lump sum** price, which price shall include full compensation for furnishing all labor, materials, tools and equipment, doing all work involved in as specified herein, and no additional allowance will be made therefor.

Remove Existing Pavement Markers shall be paid for at the contract **lump sum** price, which price shall include full compensation for furnishing all labor, materials, tools and equipment, and doing all work involved in as specified herein, and no additional allowance will be made therefor.

Payment for covering existing manhole covers and frames, monuments, and valve boxes shall be included under various contract items of work and no additional compensation will be made.

SECTION 37-3 SLURRY SEAL

37-3.01A Slurry Seal: This item shall consist of furnishing and placing a Type II slurry seal coat on Santa Rosa City streets as designated herein in conformance with the requirements of Section 37-3, "Slurry Seal", State of California Standard Specifications, the International Slurry Seal Association Publication A105, dated February 2010 (copies available from www.slurry.org), and these special provisions.

37-3.01C Submittals: You shall provide a mix design for the City's review and furnish a sample of aggregate for testing prior to start of work. Sieve analyses will be performed by the City during sealing operations to ensure strict compliance with the grading.

You shall submit weight or load slips verifying the quantities of Aggregate and Asphaltic Emulsion. Slips shall be provided to the Engineer on the day of the delivery to the pit site.

37-3.02 MATERIALS

37-3.02B(2) Aggregate: The mixture shall be spread to a minimum thickness of not less than 3/16" and a maximum thickness not to exceed 1/4", as measured on a paper disk placed on the pavement by City, and shall be placed at a rate of not less than 14 pounds or more than 17 pounds of aggregate per square yard of pavement surface.

Aggregate for Slurry Seal must have the quality characteristic as specified below:

Sieve Size	Percentage Passing
3/8	100
No. 4	94-100
No. 8	65-90
No. 16	40-70
No. 30	25-50
No. 200	5-15

Sand Equivalent	55 minimum.
Durability Index	55 minimum.
Methylene Blue Value	10 maximum per AASHTO T330-07 (2001).

37-3.02B(3) Asphaltic Emulsion: Asphalt emulsion shall be a quick-setting type, Grade CQS1h cationic conforming to the requirements of Section 94, "Asphalt Emulsions". You shall add 2-1/2 percent of latex by weight to the above specified emulsion to create a latex modified emulsion (LMCQS1h).

37-3.03 CONSTRUCTION

37-3.03A General: Prior to the sealing operation, you perform any necessary patching of the street surface.

You will hand deliver advance notices of the work to residences and businesses.

Immediately prior to the sealing operation, you will oil or cover all utility covers, remove thermoplastic pavement markings, and remove raised pavement markers.

You will clean the streets and all grounds of all excess material, rubbish, equipment and temporary structures associated with the performance of work on a daily basis.

37-3.03C Mixing and Spreading Equipment: You shall provide and operate a minimum of three (3) 12 yard slurry application machines with 3 operators at all times. There is no provision for a back-up machine; all three machines shall be in use. Each machine shall comply with Section 7-1.02O of these Special Provisions.

37-3.03D Placing: Start and finish of slurry application shall be a straight line obtained by laying a strip of building paper or other approved material on street surface which shall be used for starting and finishing operations. After application of slurry, paper is to be removed by the contractor, leaving a straight edge. Excess materials on street at either end of job shall be removed by Contractor.

The surface may be prewetted by fogging ahead of the slurry box if required by local conditions. Water used in prewetting the surface shall be applied at such a rate that the entire surface is damp with no apparent flowing water in front of the slurry box. The slurry mixture shall be of the desired consistency when deposited on the surface and no additional elements shall be added. Total time of mixing shall not exceed four minutes. A sufficient amount of slurry shall be carried in all parts of the spreader at all times so that complete coverage is obtained. No lumping, balling, or unmixed aggregate shall be permitted. If the coarse aggregate settles to the bottom of the mix, the slurry will be removed from the pavement. No excessive breaking of the emulsion will be allowed in the spreader box. No streaks such as caused by oversized aggregate will be left in the finished pavement. The finished surface shall be free of washboarding.

No excessive build-up or unsightly appearance shall be permitted on longitudinal or transverse joints.

Approved squeegees shall be used to spread slurry in areas non-accessible to the slurry mixer. Care shall be exercised in leaving no unsightly appearance from hand work.

Treated areas will be allowed to cure until such time as the Engineer permits their opening to traffic.

A non-labor supervisor shall be present and on the job at all times with sufficient crew to attain a minimum of 200,000 square feet of production per day. Daily schedules shall not exceed 300,000 square feet of production per day.

You will furnish the dates each street is to be sealed. The proposed list of streets to be sealed is located at the end of the Special Provisions. The work will be scheduled so the Contractor places an amount of slurry seal equal to or greater than the minimum number of square feet of slurry seal specified in this Section.

You shall not seal any street on a date that differs from the date on the schedule. Modifications to the schedule may be requested at least two weeks prior to construction of that portion of the work. Such modifications of the schedule shall be subject to approval.

All efforts to avoid covering traffic buttons shall be made.

37-3.03D(2) Surface Preparation: Surface Preparation shall be accomplished by commercial street sweeping vehicles equipped with automatic debris pickup. Debris shall become your property and disposed of properly. Transferring of the debris from pickup vehicle or temporary stockpiling of debris will not be allowed. Debris shall be deposited from pickup vehicle to final disposal location. The use of a debris box located at the pit site for the disposal of sweeping debris is acceptable. Any sweeping beyond the limits to be slurried or in advance of the day a given street is to be slurried shall be at your expense. Street sweeping will be exempt from the construction hours stated in section 8-1.05. In no case shall street sweeping begin prior to 4:30 a.m. Street sweeping vehicles noise shall be limited to 75 db as measured at a distance of 25 feet and a height of 5 feet.

At all times during the street sweeping operation you shall apply adequate water to control dust. Dust control water shall not create runoff or flow into the gutter.

Sweeping of the streets shall be performed on the same day the street is to be slurried in accordance with the work schedule. Sweeping shall be performed in the same sequential order as the streets are to be slurried. Sweeping of a given street shall be completed a minimum of two hours prior to the slurry application.

37-3.03E Maintenance Sweeping: You shall perform “as needed” sweeping of all sealed streets for a period of 10 days following the last day of application to remove all accumulations of loose material and maintain streets in a “ravel free” condition. Maintenance sweeping shall be done by commercial street sweeping vehicles equipped with automatic debris pickup. Where commercial street sweeping vehicles cannot remove loose material hand sweeping or equal shall be performed.

37-3.03F Designated Construction Zones: Portions of City streets that shall be designated as construction zones (pit sites) for the purpose of transporting slurry seal are as follows:

TBD

Other City streets may be designated as construction zones (pit sites) by the Engineer as deemed needed during construction.

Maps of these construction zones (pit sites) are enclosed at the end of this section.

This list or a copy of this complete list and the maps or a copy of the maps shall be carried in each slurry truck at all times for the duration of this project.

37-3.04 PAYMENT: Compensation for **Surface Preparation** and **Maintenance Sweeping** shall be considered as included in the contract price paid for “Slurry Seal” item of work, which price shall include full compensation for furnishing all labor, materials, tools, equipment, and doing all work involved in preparation sweeping the streets to be slurried and providing maintenance sweeping including but not limited to mechanical and hand sweeping, disposal of debris, and no additional allowance will be made therefor.

Slurry Seal shall be paid for at the contract unit price per **square foot**, which price shall include full compensation for furnishing all labor, materials, tools, equipment, adhering to the designated construction zones, and doing all work involved in constructing the slurry seal complete in place including any necessary patching of the street surface, notification per Sections 12-4.02 and 121-1.02, hand deliver advance notices of the work to residences and businesses, clean-up and protecting the seal from traffic damage until the mixture has cured sufficiently so that material will not adhere to the tires of vehicles, as specified herein, and no additional allowance will be made therefor.

37-5 CRACK SEAL

37-5.01 General: This work shall consist of cleaning and filling the cracks with rubber asphalt joint seal as specified in the Standard Specifications and these Special Provisions and as directed by the Engineer. All cracks on the surfaces to receive microsurfacing shall be filled.

37-5.02 Materials:

The crack sealant shall be a mixture of paving asphalt and ground rubber and shall conform to ASTM D 5078, Type II. The crack seal product shall conform to the following requirements:

<u>Test</u>	<u>Specification Limit</u>
Cone Penetration 77°F(25°C)(ASTM D5329)	35-55
Resilience (ASTM D5329)	40% min.
Softening Point (ASTM D36)	200°F(93°C) min.
Ductility 77°F(25°C)(ASTM D5113)	30 cm min.
Flexibility (ASTM D3111 Modified)	Pass at 20°F (-7°C)
Flow 140°F(60°C)(ASTM D5329)	3 mm max.
Brookfield Viscosity 400°F(204°C)(ASTM D2669)	100 Poise max.
Asphalt Compatibility (ASTM D5329)	Pass
Bitumen Content (ASTM D4)	60% min.
Tensile Adhesion (ASTM D5329)	500% min.
Safe Heating Temperature	400°F(204°C)
Recommended Pour Temperature	380°F(193°C)

37-5.03 Construction:

During all construction operations, the Contractor shall protect cracks cleaned for sealing from intrusions of solid foreign materials into the groove or into the sealant.

All cracks indicating weed growth are to be sprayed and cleaned in accordance with Section 37-3.03A of these special provisions.

Immediately prior to applying the sealant, the cracks shall be cleaned with high pressure air jets to remove all residue and foreign material. Any weed growth shall be physically removed. Water jets will not be allowed. Crack surfaces shall be dry at the time the sealant is applied. Crack seal materials shall be placed in conformance with the manufacturer's recommendations. Crack seal materials shall not be placed when the surface temperature is below 50 degrees Fahrenheit.

The finished crack seal shall be bonded to the crack such that there is no separation or opening between the sealant and the crack edge and there shall be no cracks, separation or other opening in the sealant.

The Contractor shall remove crack seal material that is not placed within the conformance of these provisions, clean cracks as specified herein and then reseal the cracks at his expense.

Before opening to traffic, apply the manufacturer's recommended detackifying agent to tacky crack treatment material on the traveled way.

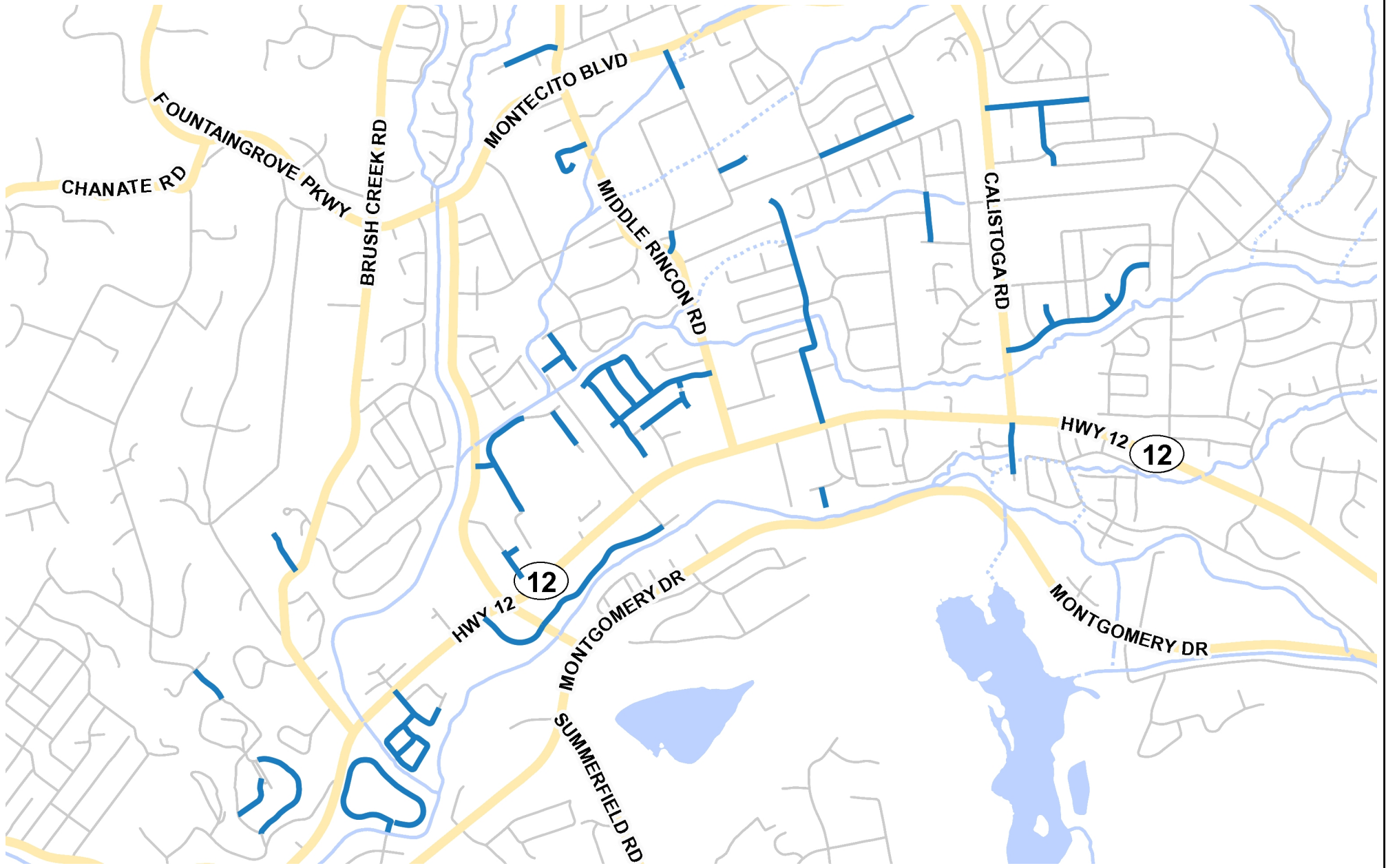
37-5.04 Payment: Crack Seal shall be paid for at the contract price per **linear foot**, which price shall include full compensation for furnishing all labor, materials, tools, equipment, and doing all the work involved in placing the crack seal complete in place as specified herein and no additional allowance will be made therefor.

NE QUADRANT			
REF No.	RD Name	Beg Location	End Location
1	ALTA VISTA AVE	SUNRISE AVE	CHAPARRAL RD
2	BAMBI LN	END	177' W/MIDDLE RINCON RD
3	BAMBI LN	177' W/MIDDLE RINCON RD	MIDDLE RINCON RD
4	BENJAMINS CT	BENJAMINS RD	END
5	BENJAMINS RD	1349' N/CANYON DR	MONTECITO AVE
6	BREEDEN ST	END	PROSPECT AVE
7	BRUSH CREEK LN	BRUSH CREEK RD	END
8	CALISTOGA RD	END	HIGHWAY 12
9	CANDACE AVE	RANDALL LN	DEAD END
10	CANYON DR	ST. MARY DR	DRAKE DR
11	FLAT ROCK CIR	WAYVERN DR	WAYVERN DR
12	FOLIA CT	END	BUCKTHORNE CT
13	HAMPTON CT	MARIT DR	END
14	HANSBERY WAY	END	PROSPECT AVE
15	JACK LONDON DR	HIGHWAY 12	END
16	KINTYRE WAY	FLAT ROCK CIR	FLAT ROCK CIR
17	MARIT CT	MARIT DR	END
18	MARIT DR	CALISTOGA RD	LOMBARD AVENEUE
19	MISSION CIR	MISSION BLVD	HWY 12
20	OAK LAKE AVE	GOLD LAKE DR	AUSTIN CREEK BRIDGE
21	PIEDRA LN	DEL ROSA AVE	JULIET DR
22	PROSPECT AVE	END	REDWING DR (PVT ST)
23	PROSPECT AVE	END	WINDING CREEK AVE
24	QUIGG DR	MISSION BLVD	500 E/MISSION BLVD
25	QUIGG DR	500 E/MISSION BLVD	END
26	RANDALL LN	END CUL-DE-SAC	88N / CANDACE AVE
27	SAN JUAN ST	SPAIN AVE	SAN LUIS AVE
28	SAN LUIS AVE	CALISTOGA RD	RINALDO ST
29	SCHIAPPINO ST	PROSPECT AVE	WINDING CREEK
30	SHERBROOK DR	MISSION BLVD	PROSPECT AVE
31	SORRENTO WAY	ACACIA LN	CULEBRA WAY
32	SPEERS RD	MIDDLE RINCON RD	BENJAMINS RD
33	STARBUCK AVE	150 E/BREEDEN ST	VALE ST
34	STREAMSIDE DR	SOUTH END	HIGHWAY 12
35	SUNRISE AVE	DEL ROSA AVE	280'S/JULIET DR
36	SUNRISE AVE	280'S/JULIET DR	OSAGE AVE
37	SUNSHINE AVE	CITY LIMIT (W END)	MIDDLE RINCON RD
38	TESERO LN	DEAD END	SORRENTO WAY
39	VALE ST	DEAD END	100S/WINDING CREEK AVE
40	VALE ST	100S/WINDING CREEK AVE	WINDING CREEK AVE
41	WAYVERN DR	FLAT ROCK CIR	STREAMSIDE DR
42	WINDING CREEK AVE	END	MIDDLE RINCON RD
43	YULUPA CIR	SANTA ROSA CREEK BRIDGE	SANTA ROSA CREEK BRIDGE

NW QUADRANT			
REF No.	RD Name	Beg Location	End Location
44	AZTEC ST	END	END
45	CHEROKEE AVE	MOHAWK ST	END
46	COMANCHE ST	MOHAWK ST	END
47	COTTON CT	MERIDIAN CIR	CUL-DE-SAC
48	ETHAN DR	KIPLAND DR	TEASDALE LN
49	HALYARD DR	WEST COLLEGE AVE	KIPLAND DR
50	HALYARD DR	KIPLAND DR	TEASDALE LN
51	KIPLAND DR	PINER CREEK DR	HALYARD DR
52	MERIDIAN CIR	WEST COLLEGE AVE	MERIDIAN CIR
53	NAVAJO ST	COMANCHE ST	END
54	PAPAGO CT	APACHE AVE	END
55	TEASDALE LN	KIPLAND DR	HALYARD RD

SW QUADRANT			
REF No.	RD Name	Beg Location	End Location
56	BOYD ST	BARHAM AVE	EARLE ST
57	CHESTNUT ST	SEBASTOPOL RD	END
58	GOLDEN GATE AVE	867'/E ARTHUR ASHE CIR	FRESNO AVE
59	GOODMAN AVE	200'N/END	SEBASTOPOL RD
60	HICKORY CIRCLE	BOYD ST	BOYD ST
61	LOMBARDI CT	SEBASTOPOL RD	END
62	OLIVE ST	160'N/END	PEACH ST
63	OLIVE ST	EARLE ST	SEBASTOPOL RD
64	PEACH CT	END	CORBY AVE
65	PEACH ST	CORBY AVE	POPLAR ST
66	POPLAR ST	END	160 N/END
67	POPLAR ST	160'N/END	N/INTERSECTION PEACH

SE QUADRANT			
REF No.	RD Name	Beg Location	End Location
68	ANNADEL HEIGHTS DR	SANTA JUANITA CT	CARISSA AVE
69	CARISSA AVE	SUMMERFIELD RD	30 FT E ANNADEL HEIGHTS DR
70	FLEMISH CT	BURLINGTON ST	END
71	GLENCANNON ST	HEATHERGLEN CIR	END
72	HOEN AVE	SUMMERFIELD RD	400 w/BURLINGTON ST
73	KIERAN CT	NEWANGA DR	CUL-DE-SAC
74	MILTON ST	PETALUMA HILL RD	TEMPLE AVE
75	PRESSLEY ST	PETALUMA HILL RD	HENDLEY ST
76	RUTLEDGE AVE	END	WARE AVE
77	RUTLEDGE AVE	WARE AVE	BENNETT VALLEY RD
78	SUMMERHAYS PLACE	END CUL-DE-SAC	SUMMERFIELD RD
79	NEWANGA CT	END	NEWANGA AVE
80	LUCY CT	END	HOEN AV



0.6 0 0.30 0.60 Miles

1: 19,000

6/22/2016

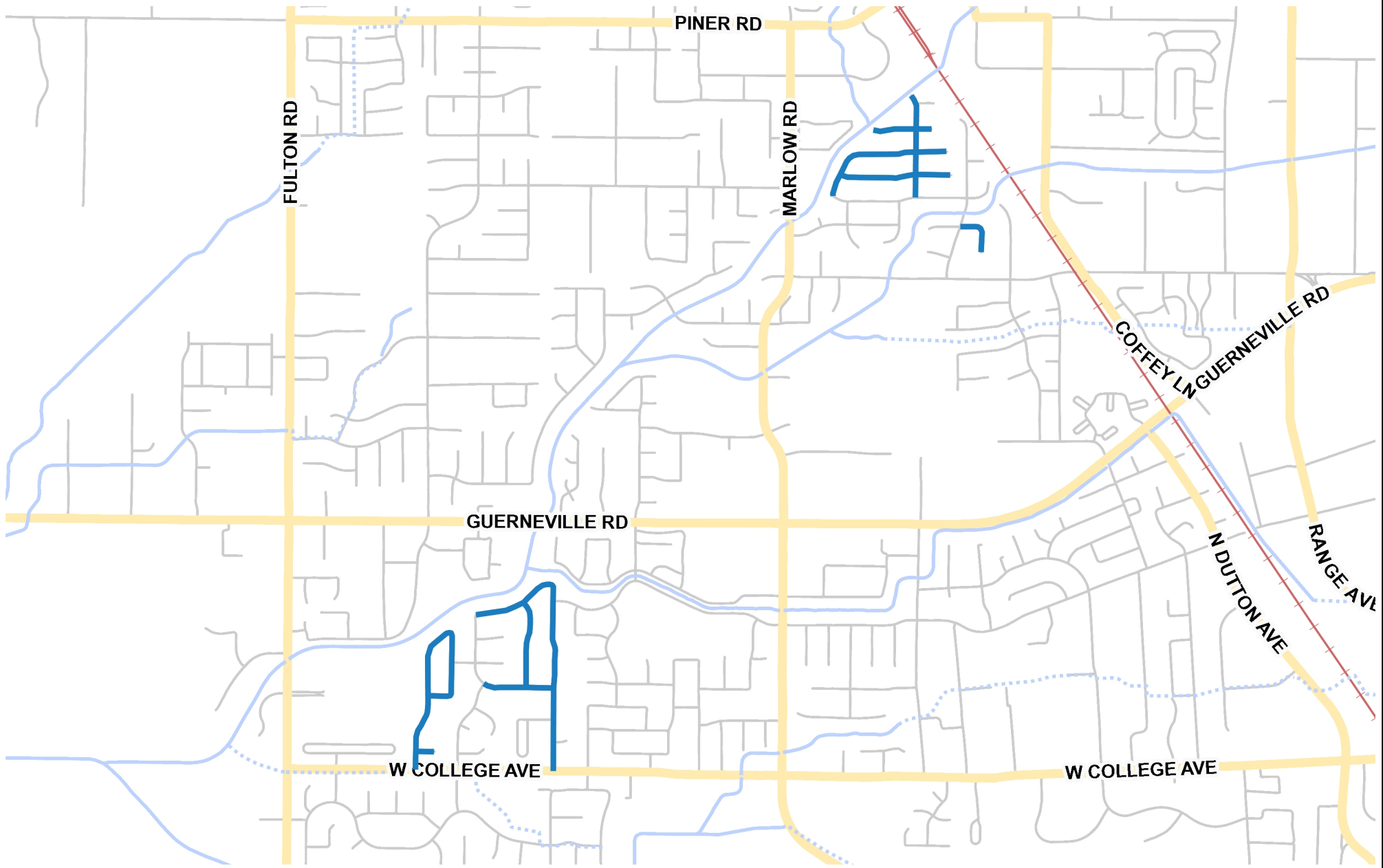


46

This map is a user generated static output from an Internet mapping site and is for reference only. Data layers that appear on this map may or may not be accurate, current, or otherwise reliable.

THIS MAP IS NOT TO BE USED FOR NAVIGATION

C02071



0.5 0 0.27 0.53 Miles

1: 16,809

6/22/2016

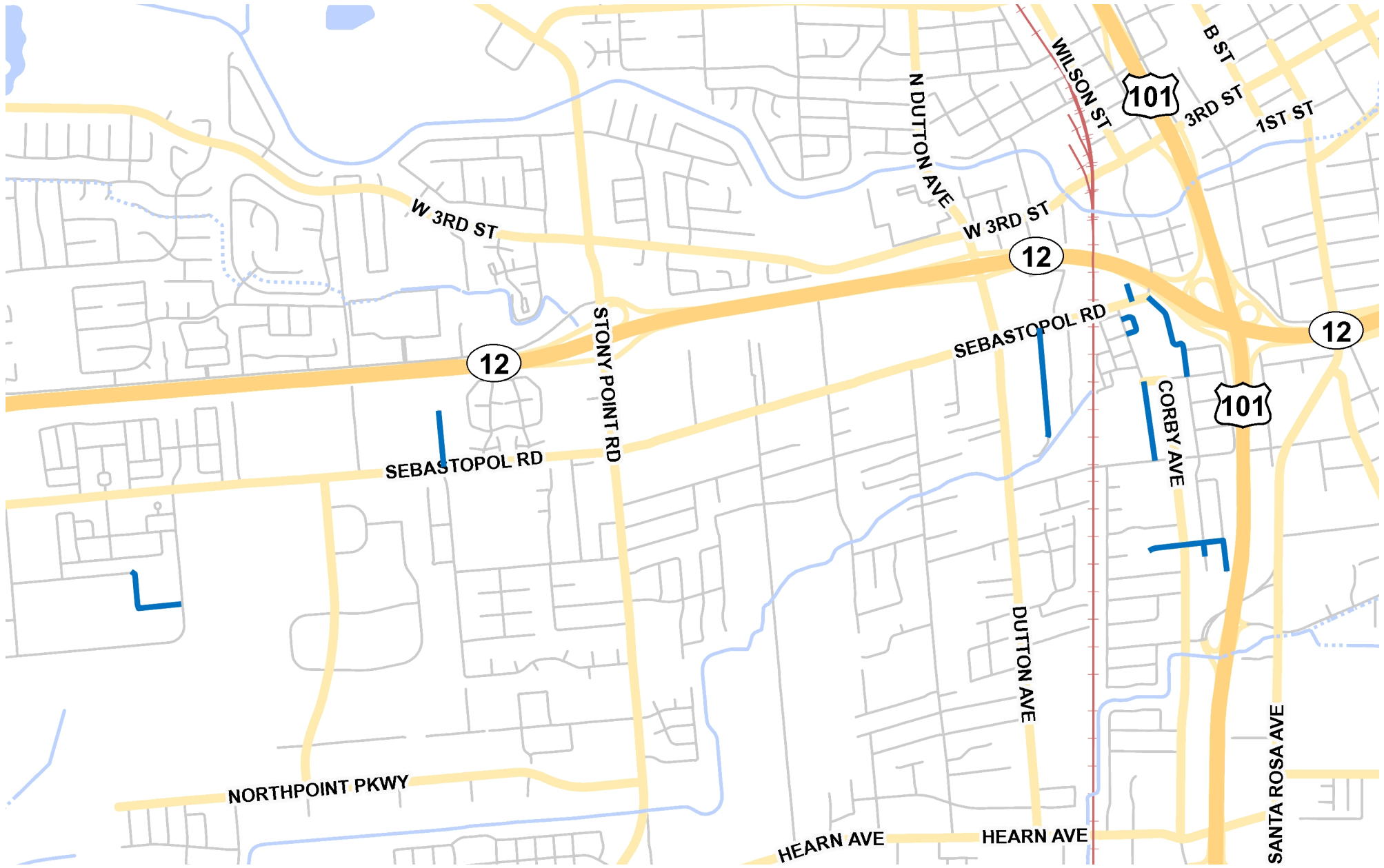


47

This map is a user generated static output from an Internet mapping site and is for reference only. Data layers that appear on this map may or may not be accurate, current, or otherwise reliable.

THIS MAP IS NOT TO BE USED FOR NAVIGATION

C02071



0.6 0 0.30 0.60 Miles

1: 19,000

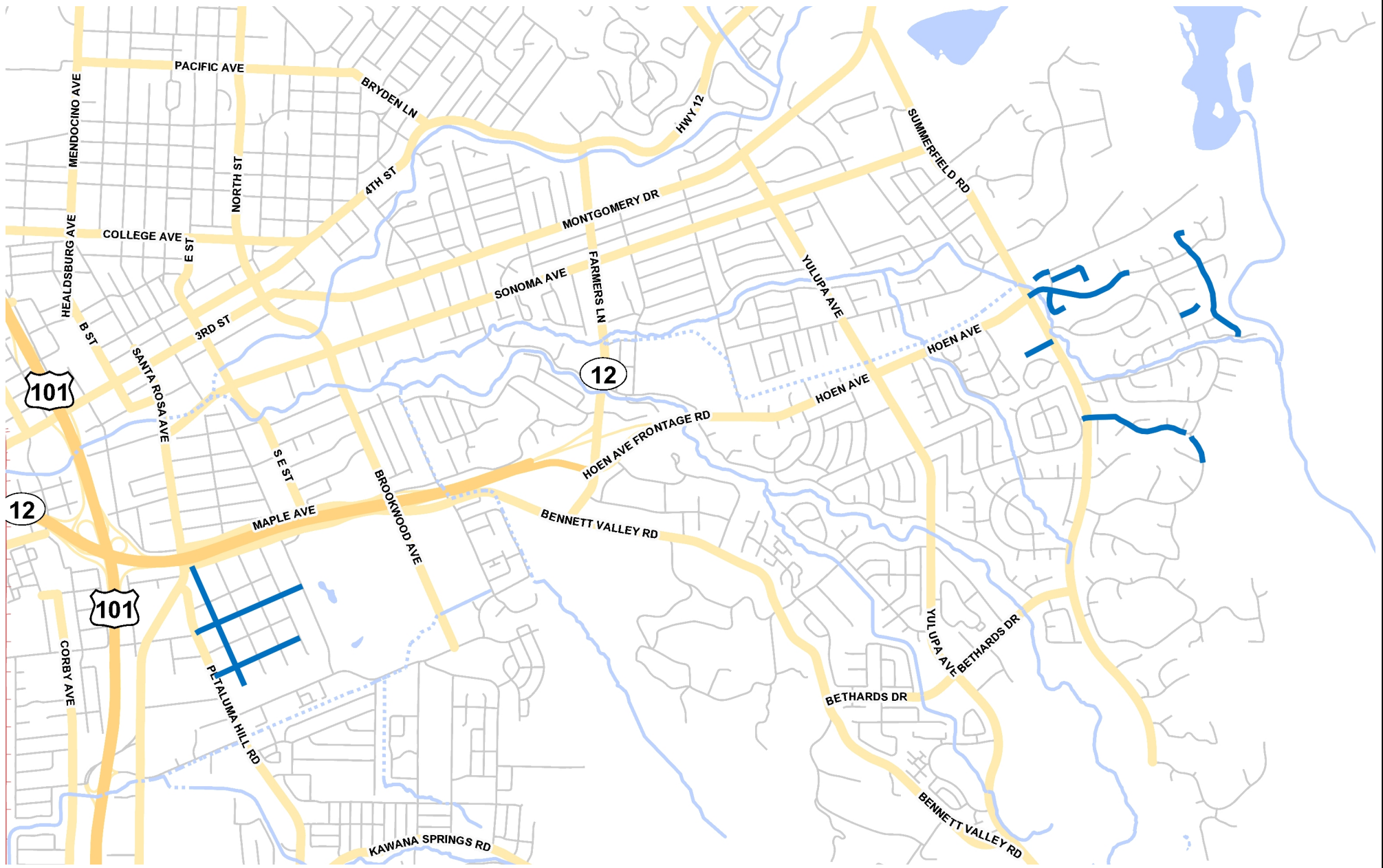
6/22/2016



This map is a user generated static output from an Internet mapping site and is for reference only. Data layers that appear on this map may or may not be accurate, current, or otherwise reliable.

THIS MAP IS NOT TO BE USED FOR NAVIGATION

C02071



0.8 0 0.41 0.82 Miles

1: 26,000

6/22/2016



SECTION 84

TRAFFIC STRIPES AND PAVEMENT MARKINGS

84-1.01 General: Attention is directed to Section 12 “Temporary Traffic Control” and Section 15 “Existing Facilities” of these Special Provisions. Traffic stripes and pavement markings shall conform to the applicable provisions of Section 84 of the Standard Specifications, The City Traffic Standards, and these Special Provisions and shall be placed at the locations shown on the Plans.

You shall provide and install temporary retro-reflective pavement markings on the same day as the existing permanent markings are removed or destroyed, or as directed by the Engineer, and maintain them until the new permanent markings are in place.

Temporary striping on all ground surfaces shall be paint (white and/or yellow) with retro-reflective glass beads or an approved equivalent and shall be installed the same day as the existing permanent striping is removed, or as directed by the Engineer. Temporary striping shall be maintained until new permanent striping is in place.

Existing pavement markings, including crosswalks, disturbed by construction activities shall be replaced in their entirety.

All striping to be replaced shall match existing sections in kind unless approved by the Engineer.

You shall remove all existing traffic striping and pavement marking in conflict with proposed improvements, as shown on the Plans, and as directed by the Engineer, and shall be responsible for the proper disposal of their grindings away from site work.

Permanent traffic stripes and pavement markings shall be installed after all iron has been raised for that particular street section, but no more than five days after final paving for that section of roadway.

Existing stripes and pavement markings to remain, which are damaged by the work shall be replaced at the Contractor’s expense. This includes areas outside the immediate project limits.

Painted curbs which are damaged or replaced as part of the work shall be repainted to match existing conditions.

84-1.04 Payment: **4-inch Thermoplastic, 8-inch Thermoplastic, and 12-inch Thermoplastic** shall be paid for at the contract price per **linear foot**, which price shall include furnishing all paint and glass beads, thermoplastic pavement marking material weather white or yellow, tape, and furnishing all equipment, tools, and labor, and doing all the work involved as herein specified, including but not limited to, eradication of existing traffic stripes and pavement markings, surface preparation, replacement of damaged stripes, temporary traffic stripes and pavement markings, all temporary traffic measures, and any other work required to install traffic stripes and pavement markings not specifically enumerated in the City Standards, these Special Provisions or on the Project Plans, and no additional allowance will be made therefor.

Thermoplastic Turn Arrow shall be paid for at the contract price **each**, which price shall include furnishing all paint and glass beads, thermoplastic pavement marking material weather white or yellow, tape, and furnishing all equipment, tools, and labor, and doing all the work involved as herein specified, including but not limited to, eradication of existing traffic stripes and pavement markings, surface preparation, replacement of damaged stripes, temporary traffic stripes and pavement markings, all temporary traffic measures, and any other work required to install traffic stripes and pavement markings not specifically enumerated in the City Standards, these Special Provisions or on the Project Plans, and no additional allowance will be made therefor.

Pavement Marking shall be paid for at the contract price per **square foot**, which price shall include furnishing all paint and glass beads, thermoplastic pavement marking material weather white or yellow, tape, and furnishing all equipment, tools, and labor, and doing all the work involved as herein specified, including but not limited to, eradication of existing traffic stripes and pavement markings, surface preparation, replacement of damaged stripes, temporary traffic stripes and pavement markings, all temporary traffic measures, and any other work required to install traffic stripes and pavement markings not specifically enumerated in the City Standards, these Special Provisions or on the Project Plans, and no additional allowance will be made therefor.

SECTION 85 PAVEMENT MARKERS

85-1.01 General: Raised pavement markers shall be placed at the locations shown on the Plans and in accordance with the applicable provisions of Section 85 of the Standard Specifications, these Special Provisions, and the City of Santa Rosa Traffic Standards. Attention is directed to Section 15 “Existing Facilities” of these Special Provisions.

85-1.02 Materials: All raised pavement markers (RPMs) shall conform to the most current State Specifications.

85-1.02B Nonreflective Pavement Markers: All nonreflective pavement markers shall be ceramic.

85-1.02C Retroreflective Pavement Markers: Blue reflective raised pavement markers are to be placed per City STD -857 for each fire hydrant within the construction limits of the project. Where a hydrant, whether existing or new, is located at the corner of two streets, a blue RPM shall be placed in each street.

85-1.03 Construction: Existing raised pavement markers to remain but damaged by you shall be replaced as determined by the Engineer, at your expense. This includes areas outside the immediate project limits.

The exact locations and limits of raised pavement markers will be determined in the field by the Engineer.

You shall provide, install and maintain temporary markers on the same day that the existing permanent markers are removed, or as directed by the Engineer, and maintain this delineation until new permanent markers are in place. Temporary markers on non ground surfaces shall be plastic adhesive retroreflective delineators.

Existing raised pavement markers conflicting with the proposed striping shall be removed immediately prior to placement of new markers.

Holes left in the pavement due to the removal of raised pavement markers shall be filled with enough adhesive to replace any asphalt which comes off with the removal of the pavement marker, leaving a level driving surface.

Permanent raised pavement markers shall be installed within 5 days following final pavement operations. Temporary markings shall be in place the same day of pavement operations.

85-1.04 Payment: **Pavement Markers, retro-reflective and non-reflective**, shall be paid for at the contract price **each**, which price shall include full compensation for furnishing all labor, materials, tools and equipment, and doing all work involved in placing raised pavement markers, complete in place, including adhesives, removing existing pavement markers, and no additional allowance will be made therefor.

SECTION 111 TREE PRUNING AND TRIMMING

111-1.01 General: Tree pruning and trimming work will be necessary prior to the placement of slurry seal. Tree pruning and trimming shall be consistent with American National Standards Institute (ANSI) A300-1995, "Tree, Shrub and Other Woody Plant Maintenance Standard Practices" and "Tree-pruning Guidelines" published by the International Society of Arboriculture (ISBN 1-881956-07-5).

The successful bidder or the successful bidder's subcontractor must be able to demonstrate knowledge and abilities to perform the required work by possessing a valid California D49 Tree Service Contractor's License and possess the tools and equipment necessary to perform the required work.

Contractors shall provide all safety devices, traffic control, and be totally responsible for the safe execution of all required tree work.

Attention is directed to Section 7-1.03A "Maintaining Traffic" and Section 12-4.02 "Closure Requirements" of these Special Provisions.

All debris from tree pruning and trimming shall become the property of the contractor and shall be disposed of by him at a site away from the work area.

The extent of pruning and trimming required shall be sufficient to allow for truck mounted mixer spreaders access during the placement of slurry. Truck mounted mixer spreaders will typically require unobstructed access from the lip of gutter or edge of pavement on the street to a height of 12 feet. In no case shall hand working of the slurry mixture be allowed in order to negate the need for tree trimming except as stated below.

All tree pruning and trimming shall be completed prior to slurry seal operation.

No tree branches in excess of 6 inches in diameter are to be trimmed unless prior approval is granted by the Engineer. Tree branches in excess of 6 inches in diameter shall be marked in the field by the Contractor for approval by the Engineer.

Attention is directed to Section 7-1.11 "Preservation of Property" of these Special Provisions.

111-1.06 Payment: **Tree Pruning and Trimming** shall be paid for at the contract **Lump Sum** price, which price shall include full compensation for furnishing all labor, materials, tools, equipment, and for doing all the work involved in tree pruning and trimming, temporary traffic control, notification, repair of any damage to existing adjacent public or private property caused by the tree trimming operation, and disposal of tree trimming debris, as specified herein, and no additional allowance will be made therefor.

SECTION 121 NOTIFICATION

121-1.01: You shall notify the Engineer of any work to be performed on any given work day either on the afternoon of the prior working day or before 8:30 a.m. on the given working day. Any work completed for which the Engineer has not received prior notification of **MAY NOT BE ACCEPTED FOR PAYMENT.**

121-1.02: You shall notify in writing all residents and business owners 1 week in advance of any construction work in front of their homes or businesses. You shall notify: what type of work will be taking place, at what time, how long, and the potential impacts it will have on them. The notice shall also contain a map of the slurry/overlay sequence detailing dates and times of each portion of roadway to be resurfaced. A copy of the proposed notification and maps shall be submitted to the Engineer prior to distribution for approval.

Seventy-two (72) hours prior to construction, you shall follow up the initial 1 week notification by placing door hangers at the residences and businesses on the affected streets, including each individual apartment in multi-dwelling units, stating what type of work is taking place, what time the work will begin, how long it will take, when, where, and how parking will be restricted, and the potential impacts it will have. A copy of the proposed notification shall be submitted to the Engineer prior to distribution for review and approval.

If the work is not completed on the day scheduled, you shall re-notify and re-post the affected streets as stated above. All notices or correspondence shall be approved by the Engineer.

See Section 12-4.02 closure requirements of these technical specifications for additional requirements.

121-3.01 Payment: Full compensation for conforming to the provisions of this section shall be considered as included in the price paid for slurry seal and no additional compensation will be allowed therefor.

BID FORMS

CITY OF SANTA ROSA

STATE OF CALIFORNIA

NEIGHBORHOOD STREETS INITIATIVE SLURRY SEAL 2016

The work to be performed and referred to herein is in the City of Santa Rosa, California and consists of improvements to be constructed in accordance with the provisions of the Invitation for Bids, containing the Notice to Bidders, the Special Provisions, the Project Plan(s), the Bid Forms and the Contract, all of which are by reference incorporated herein, and each Addendum, if any is issued, to any of the above which is also incorporated by reference herein.

TO THE AWARD AUTHORITY OF THE CITY OF SANTA ROSA

The undersigned, as bidder, declares that the only person or parties interested in this bid as principals are those named herein; that this bid is made without collusion with any other person, firm, or corporation; that Contractor has carefully examined the Project Plans, Invitation for Bids and conditions therefor, and is familiar with all bid requirements, that Contractor has examined this Contract and the provisions incorporated by reference herein, and Contractor hereby proposes, and agrees that if its bid is accepted by the City, Contractor will provide all necessary machinery, tools, apparatuses, and other means of construction, and to do all the work and furnish all the materials and services required to complete the construction in accordance with the Contract, the Special Provisions, the Project Plan(s), and Addenda to any of the above as incorporated by reference, in the time stated herein, for the unit prices and/or lump sum prices as follows:

**CITY OF SANTA ROSA UNIT PRICE SCHEDULE
C02071 - NEIGHBORHOOD STREETS INITIATIVE SLURRY SEAL 2016**

No. Item	Quantity	Units	Unit Price	Total Price
1 INCENTIVE TO COMPLETE WITHIN WORKING DAYS (I)	1	LS	\$25,000.00	\$25,000.00
2 DAILY COMPLETION INCENTIVE (I)	7	EA	\$500.00	\$3,500.00
3 TRAFFIC CONTROL	1	LS	\$ _____	\$ _____
4 WATER POLLUTION CONTROL	1	LS	\$ _____	\$ _____
5 REMOVE EXISTING TRAFFIC STRIPES AND PAVEMENT MARKINGS	1	LS	\$ _____	\$ _____
6 REMOVE EXISTING PAVEMENT MARKERS	1	LS	\$ _____	\$ _____
7 SLURRY SEAL	2127879	SF	\$ _____	\$ _____
8 CRACK SEAL	15000	LF	\$ _____	\$ _____
9 4-INCH THERMOPLASTIC	2000	LF	\$ _____	\$ _____
10 8-INCH THERMOPLASTIC	200	LF	\$ _____	\$ _____
11 12-INCH THERMOPLASTIC	1500	LF	\$ _____	\$ _____
12 THERMOPLASTIC TURN ARROW	15	EA	\$ _____	\$ _____
13 PAVEMENT MARKING	1000	SF	\$ _____	\$ _____
14 PAVEMENT MARKERS RETRO-REFLECTIVE	100	EA	\$ _____	\$ _____
15 PAVEMENT MARKERS NON-REFLECTIVE	500	EA	\$ _____	\$ _____
16 TREE PRUNING AND TRIMMING	1	LS	\$ _____	\$ _____
GRAND TOTAL BID				\$ _____

In the case of any discrepancy between the unit price and the total set forth for the item, the unit price shall prevail; provided, however, that if the amount set forth as a unit price is ambiguous, unintelligible or uncertain for any reason, or is omitted, or in the case of lump sum items, is not the same amount as the entry in the "Total" column, then the amount set forth in the "Total" column for the item shall prevail in accordance with the following:

1. As to lump sum items, the amount set forth in the "Total" column shall be the unit price;
2. As to unit basis items, the amount set forth in the "Total" column shall be divided by the estimated quantity for the item and the price thus obtained shall be the unit price.

The Total Base Bid shall be the sum of the "Total" column. In case of discrepancy between the sum of the "Total" column and the amount entered as Total Base Bid, the sum of the "Total" column shall prevail. The bid comparison will be based on the sum of the "Total" column for each bidder.

If this Contract Bid is accepted by the City and the undersigned fails to execute the Contract and to give all the bonds required under the Contract, with a surety satisfactory to the Award Authority of the City of Santa Rosa, within ten calendar days after bidder has received the Notice of Award from the Engineer, then the Award Authority may, at its option, determine that the bidder has abandoned the Contract, and thereupon this bid and the acceptance thereof shall be null and void, and the forfeiture of the security accompanying this bid shall be in accordance with California Public Contract Code section 20172.

The undersigned understands and agrees that the City is not responsible for any error or omissions on the part of the undersigned in making this bid.

The bidder to whom the Contract is awarded agrees to execute the Contract in favor of the City, in the form attached, and to deliver any and all required bond(s) and insurance certificates within ten calendar days from the date of Contractor's receipt of the Notice of Award. Following the award of the Contract, Contractor shall commence work within ten calendar days from the day authorized in the Notice to Proceed and diligently prosecute the same to completion in accordance with Section 8-1.04.

LIST OF SUBCONTRACTORS

NAME OF BIDDER: _____

The following is a list of each subcontractor who will perform work or labor or render services to the undersigned for the construction of the project in an amount in excess of ½ of 1% of the total amount of this bid.

The undersigned agrees that any portion of the work in excess of ½ of 1% of the total amount of this bid and for which no subcontractor is designated herein will be performed by the undersigned.

SUBCONTRACTOR NAME	SUBCONTRACTOR LICENSE NUMBER	SUBCONTRACTOR DIR REGISTRATION NUMBER	SUBCONTRACTOR BUSINESS ADDRESS	DESCRIPTION OF WORK (ITEM NO.)

LIST OF PREVIOUS SIMILAR JOBS

NAME OF BIDDER: _____

NONCOLLUSION DECLARATION
TO BE EXECUTED BY BIDDER AND SUBMITTED WITH BID

The undersigned declares:

I am the _____ of _____, the party making the foregoing bid. The bid is not made in the interest of, or on behalf of, any undisclosed person, partnership, company, association, organization, or corporation. The bid is genuine and not collusive or sham. The bidder has not directly or indirectly induced or solicited any other bidder to put in a false or sham bid. The bidder has not directly or indirectly colluded, conspired, connived, or agreed with any bidder or anyone else to put in a sham bid, or to refrain from bidding. The bidder has not in any manner, directly or indirectly, sought by agreement, communication, or conference with anyone to fix the bid price of the bidder or any other bidder, or to fix any overhead, profit, or cost element of the bid price, or of that of any other bidder. All statements contained in the bid are true. The bidder has not, directly or indirectly, submitted his or her bid price or any breakdown thereof, or the contents thereof, or divulged information or data relative thereto, to any corporation, partnership, company, association, organization, bid depository, or to any member or agent thereof, to effectuate a collusive or sham bid, and has not paid, and will not pay, any person or entity for such purpose.

Any person executing this declaration on behalf of a bidder that is a corporation, partnership, joint venture, limited liability company, limited liability partnership, or any other entity, hereby represents that he or she has full power to execute, and does execute, this declaration on behalf of the bidder.

I declare under penalty of perjury under the laws of the State of California that the foregoing is true and correct and that this declaration is executed on _____ [date], at _____ [city], _____ [state].

NOTE: The above Noncollusion Declaration is part of the Contract Bid. Signing this Bid on the signature portion thereof shall also constitute signature of this Noncollusion Declaration.

BID BOND AFFIDAVIT AND BIDDER'S SIGNATURE PAGE

Accompanying this bid is a guaranty in the form of (Notice: Insert the words "cash \$," "Cashier's Check," "Certified Check," or "Bidder's Bond" as the case may be):

in an amount equal to at least ten percent of the total of this bid.

The undersigned further agrees that if Contractor does not execute the Contract and deliver the necessary bonds to the City within the period of time specified in this Invitation for Bids, the proceeds of the security accompanying this bid shall become the property of the City of Santa Rosa, California, and this bid and the acceptance thereof may, at the option of the City, be considered null and void.

The undersigned is licensed in accordance with an act providing for the registration of Contractors, License No. _____, Class _____, expiration date _____.

The undersigned in registered with the Department of Industrial Relations, Registration No. _____.

IMPORTANT NOTICE: If bidder or other interested person is a corporation, state legal name of corporation, also names of the president, secretary, treasurer, and manager of the corporation; if a partnership, state true name of partnership, also the names of all partners in the partnership; if the bidder is a sole proprietor, state the business name and the proprietor's name in full.

Secretary of State Business Entity Number: _____.

Business Address

Telephone Number

I declare under penalty of perjury that the foregoing is true and correct.

BIDDER'S SIGNATURE: _____

TITLE: _____

DATE: _____

CONTRACT

CITY OF SANTA ROSA

CALIFORNIA

**CONTRACT NO. C02071
NEIGHBORHOOD STREETS INITIATIVE SLURRY SEAL 2016**

This Contract is made and entered into as of date to be added upon award at Santa Rosa, California, between the City of Santa Rosa ("City") and _____ of _____ ("Contractor").

ARTICLE I - For and in consideration of the payment and agreement hereinafter mentioned, to be made and performed by City, and under the conditions expressed in the required bonds hereunto annexed, Contractor agrees that for the benefit of City, at its own cost and expense, to do all the work and furnish all the materials, except such as are mentioned in the Special Provisions to be furnished by City, necessary to construct and complete the work herein described in a good, workmanlike, and substantial manner. The work embraced herein shall be done in accordance with the Standard Specifications of the State of California Department of Transportation, dated 2010, insofar as the same may apply (Standard Specifications); in accordance with the City of Santa Rosa Construction Specifications for Public Improvements (City Specifications); in accordance with the City of Santa Rosa Design and Construction Standards, (City Standards); in accordance with the State of California Department of Transportation Standard Plans, dated 2010 (Standard Plans), (collectively, "Contract Documents") and in accordance with the Special Provisions hereinabove set forth, all of which are hereby incorporated into and made part of this Contract.

ARTICLE II - Contractor agrees to receive and accept the following prices as full compensation for furnishing all materials and doing all the work contemplated and embraced in this Contract; also for all loss or damages arising out of the nature of the work aforesaid, or from the acts of the elements, or from any unforeseen difficulties or obstructions which may arise or be encountered in the prosecution of the work until its acceptance by City and for all expenses incurred by or in consequence of the suspension or discontinuance of work, and for well and faithfully completing the work, and the whole thereof in the manner and according to the Project Plans and Invitation for Bids therefor, and the requirements of the Engineer under them to wit:

ITEM NUMBER	QUANTITY	DESCRIPTION	UNIT PRICE	TOTAL
			\$ _____	\$ _____
TOTAL BASE BID (SUM OF "TOTAL" COLUMN)			\$ _____	

**BID ITEMS IN THIS SECTION WILL BE INSERTED
UPON AWARD OF THE CONTRACT AND SHALL BE
THE SAME AS THOSE BID UPON.**

ARTICLE III - City and Contractor hereby promise and agree that Contractor shall provide the materials and do the work according to the terms and conditions herein contained and referred to, for the prices aforesaid, and City hereby agrees to pay for the same at the time, in the manner, and upon the conditions set forth; and the parties for themselves, their heirs, executors, administrators, successors, and assigns, do hereby agree to full performance of the covenants herein stated.

ARTICLE IV - By execution of this Contract, Contractor hereby represents and certifies that Contractor is aware of the provisions of Labor Code section 3700 which require every employer to be insured against liability for Workers' Compensation or to undertake self-insurance in accordance with the provisions of that Code, and Contractor hereby agrees to comply with such provisions before commencing the performance of the work of this Contract.

ARTICLE V - It is further expressly agreed by and between the parties hereto that the Invitation for Bids, containing the Notice to Bidders including any required Bonds, the Contract Documents, and any Addenda are all essential parts of this Contract and are specially referred to and by such reference made a part hereof. In the event of any conflict in the provisions thereof, the terms of said documents shall control each over the other, in the following order:

1. Special Provisions
2. Project Plans
3. City Standards
4. City Specifications
5. Standard Specifications
6. Standard Plans

ARTICLE VI - Contractor agrees to commence work pursuant to this Contract within ten calendar days from the date authorized in the Notice to Proceed and to diligently prosecute the same to completion in accordance with Section 8-1.04C of the Special Provisions.

This Contract shall not be transferred or assigned without the prior written consent of City, which may be withheld by City in its sole and absolute discretion.

If Contractor is a corporation, two corporate officers of Contractor, one from each of the following two groups shall execute this Contract: a) the chairman of the board, president or any vice-president; b) the secretary, any assistant secretary, chief financial officer, or any assistant treasurer. The name and title of the corporate officers shall be printed under the signature.

In witness whereof, the parties hereto have executed this Contract as of the date first written above.

City:

City of Santa Rosa,
a Municipal corporation

By: _____

Title: _____

ATTEST:

By: _____

Title: _____

Approved as to form:

By: _____

Office of City Attorney

Contractor:

Name of Contractor,
Type of entity

By: _____

Name: _____

Title: _____

By: _____

Name: _____

Title: _____