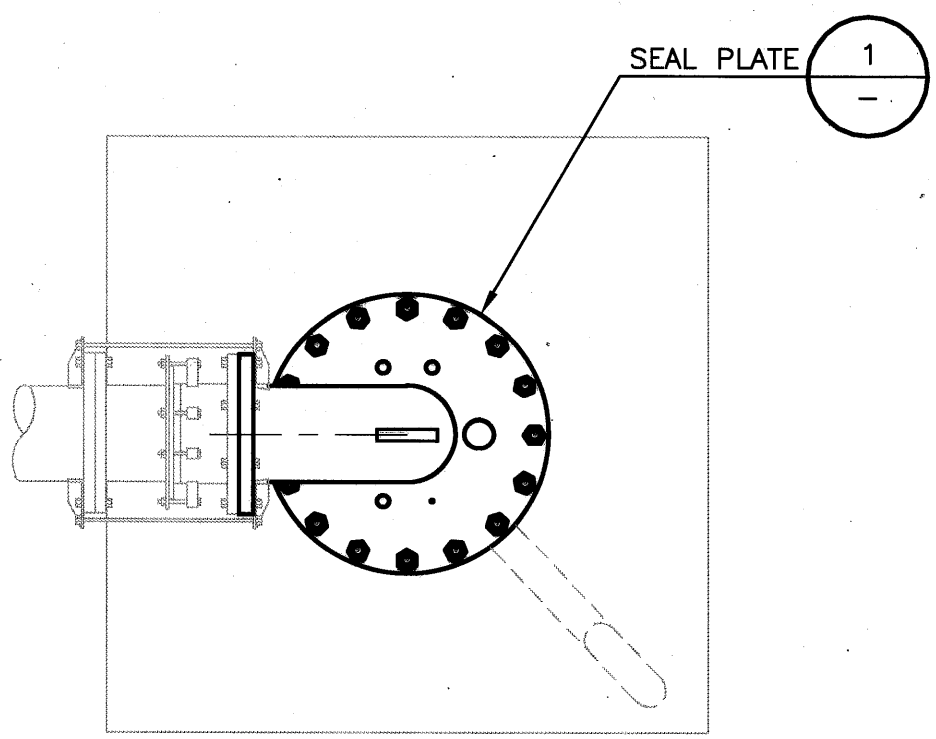
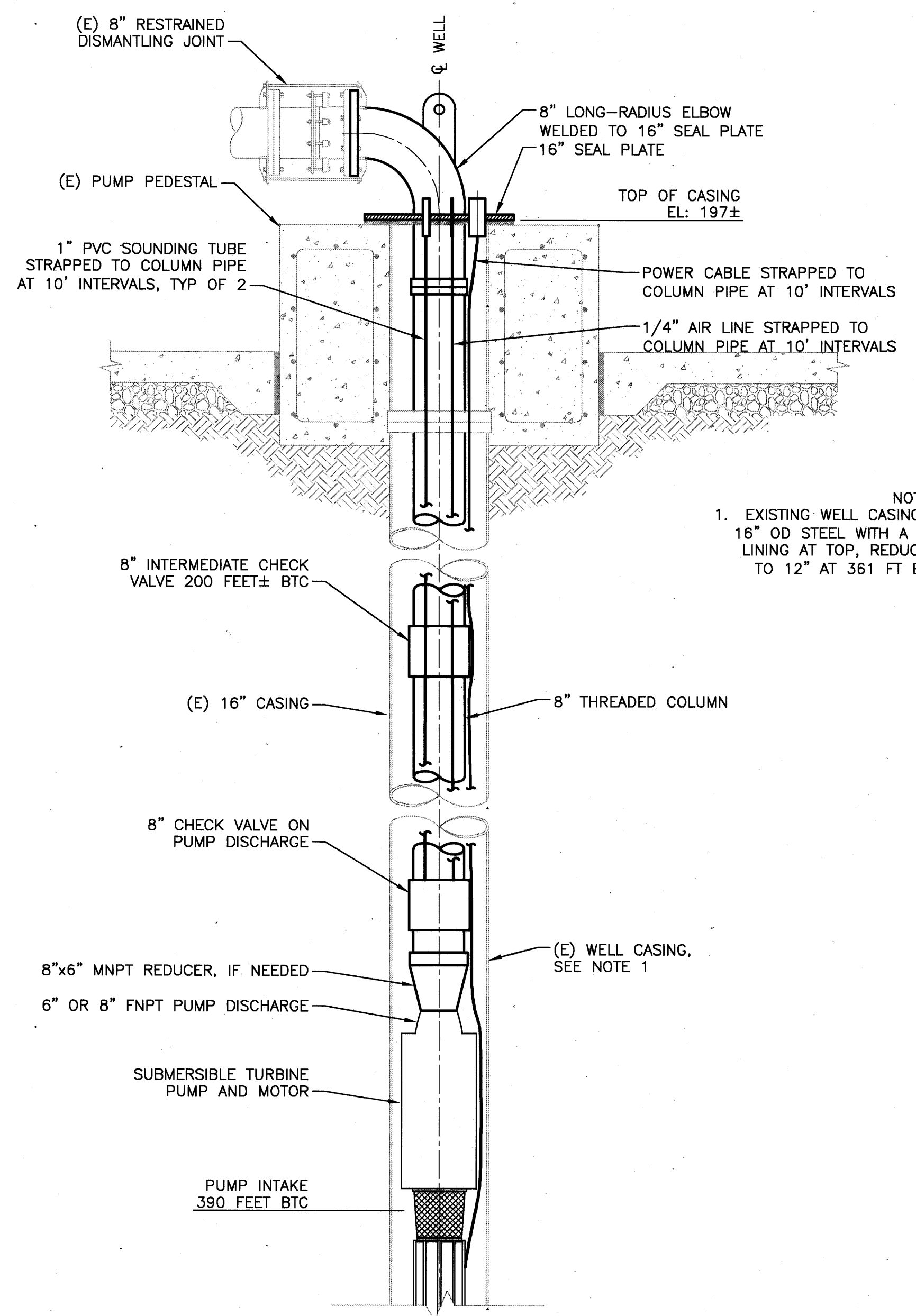


C:\Clients\405 city of santa rosa\12-15-53 farmers phase 2\CAD\production\equip_pre-purchase\405-12-15-53-EPP-SHO2-SHO3.dwg 5/17/2017 5:14 PM jriedel

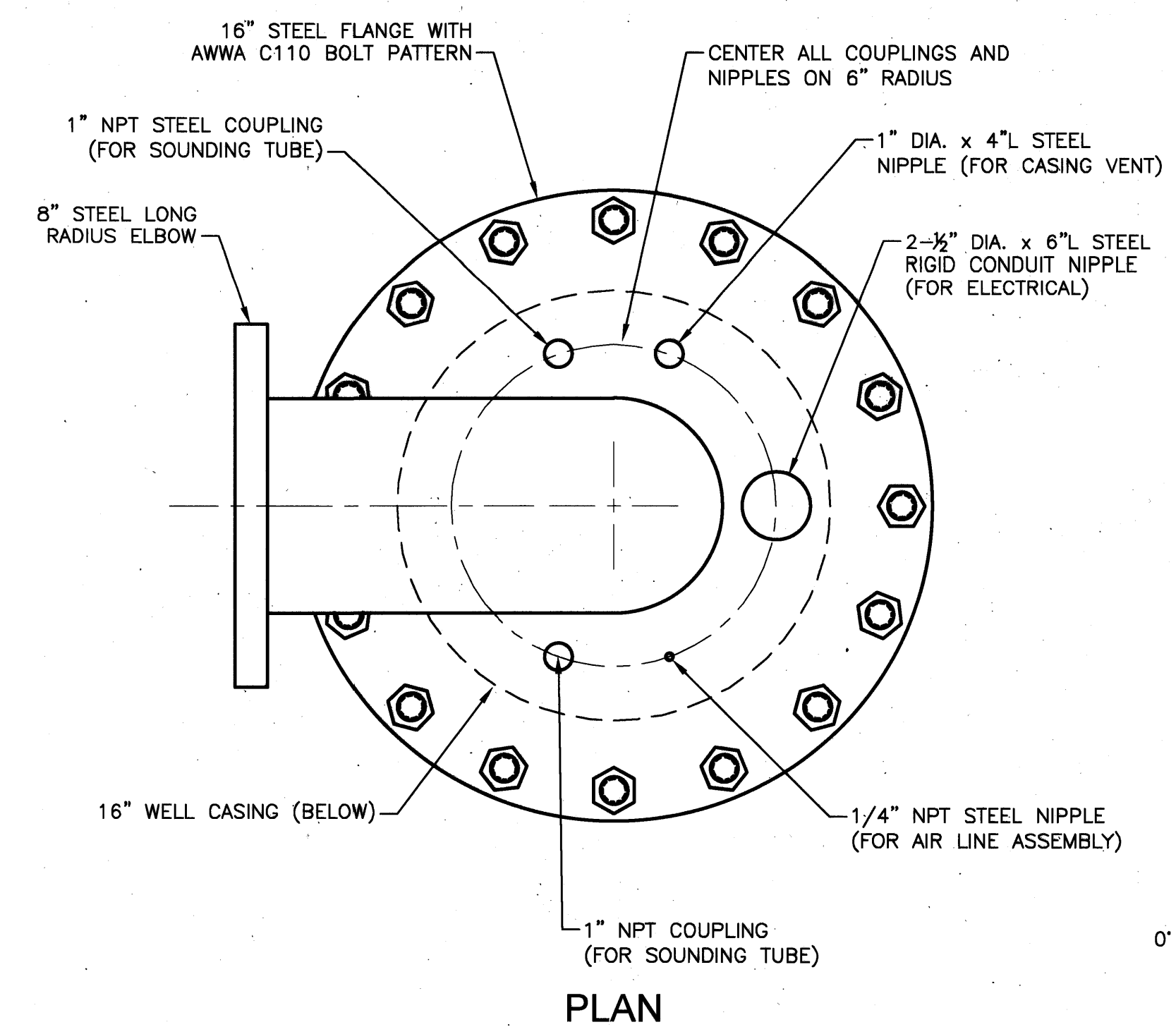


WELL 4-1 PLAN
NOT TO SCALE

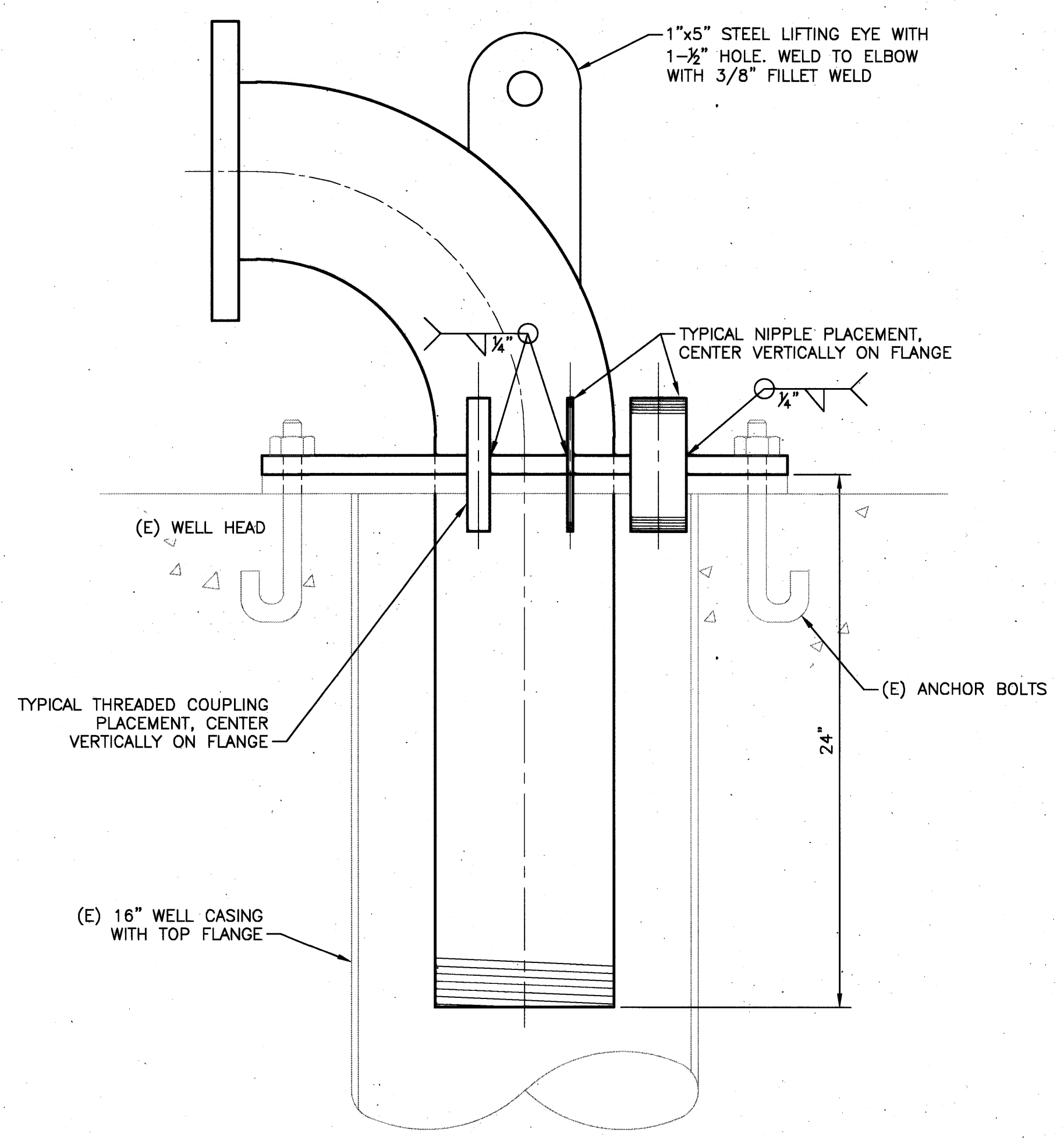


WELL 4-1 SECTION
NOT TO SCALE

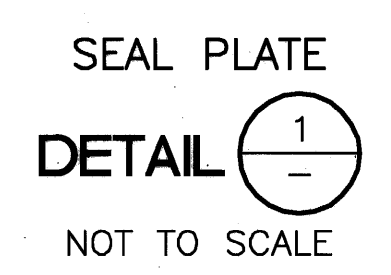
NOTES:
1. EXISTING WELL CASING IS 16" OD STEEL WITH A 14" LINING AT TOP, REDUCING TO 12" AT 361 FT BTC.



PLAN

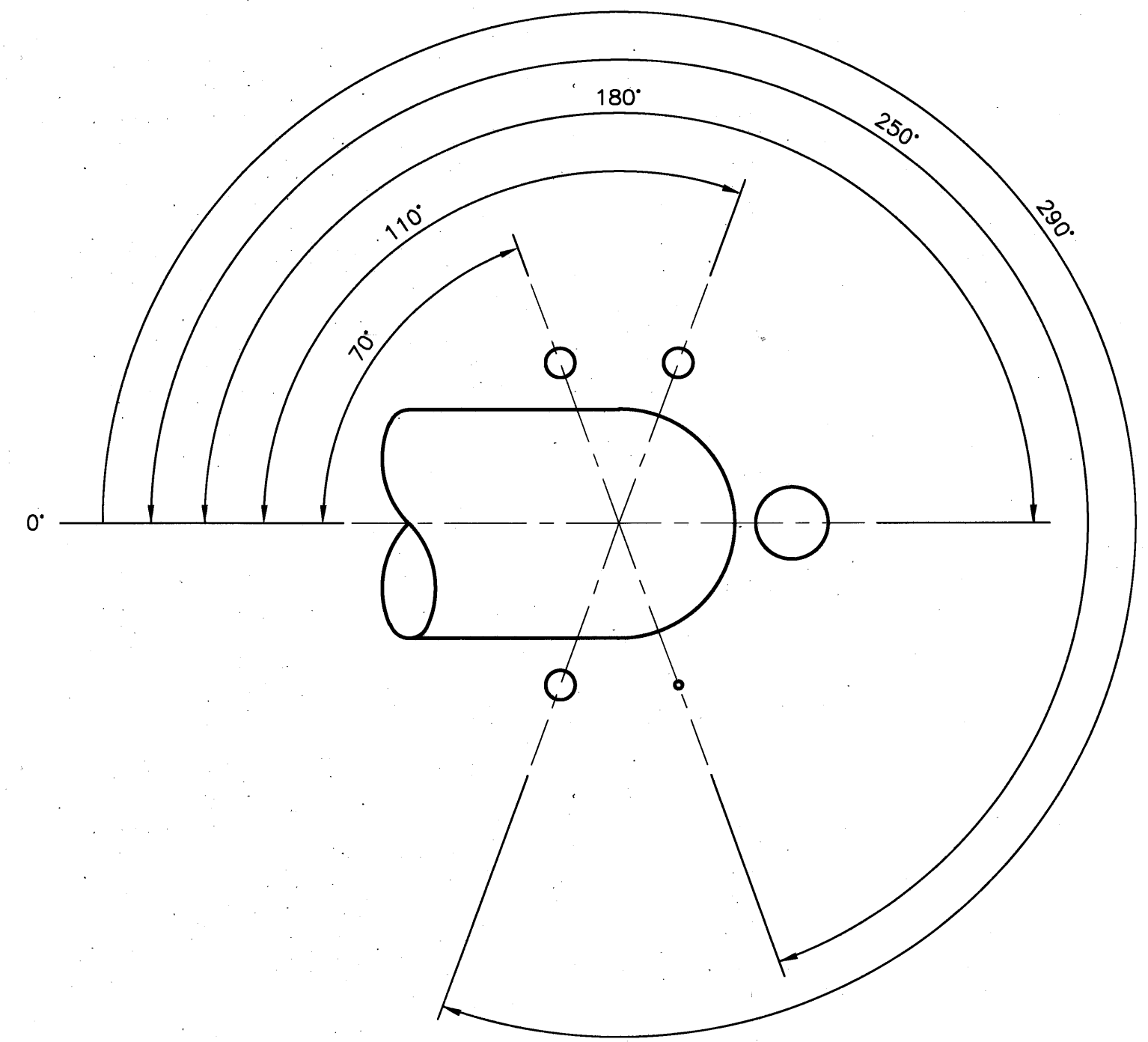


SECTION



WELL 4-1 PUMP PLAN AND SECTIONS
NOT TO SCALE

NOTES
BTC = BELOW TOP OF CASING



NIPPLE AND COUPLING LAYOUT

5/17/2017
REGISTERED PROFESSIONAL ENGINEER
No. 63052
Exp. 6-30-18
CIVIL
STATE OF CALIFORNIA

City of Santa Rosa
Transportation & Public Works

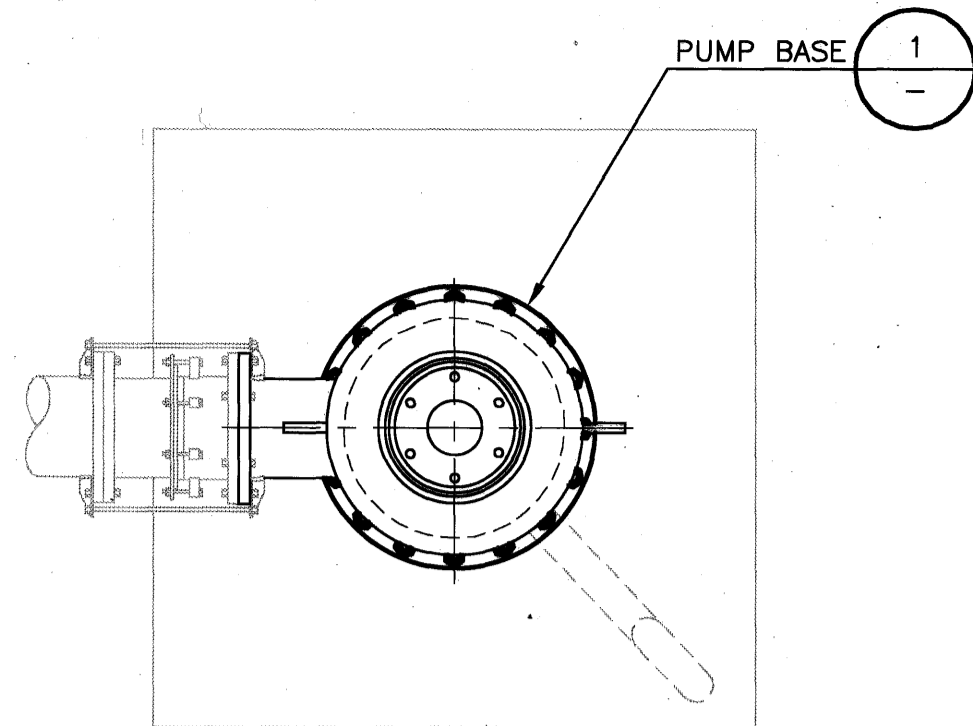
NO.	DATE	REVISION	BY

SCALE: AS SHOWN DATE: MARCH, 2017
DWN BY: JRR CHK BY: JPC
APPROVED: Deputy Director - Engineering
By *Colleen Ferguson* Date 6/1/2017
Colleen Ferguson

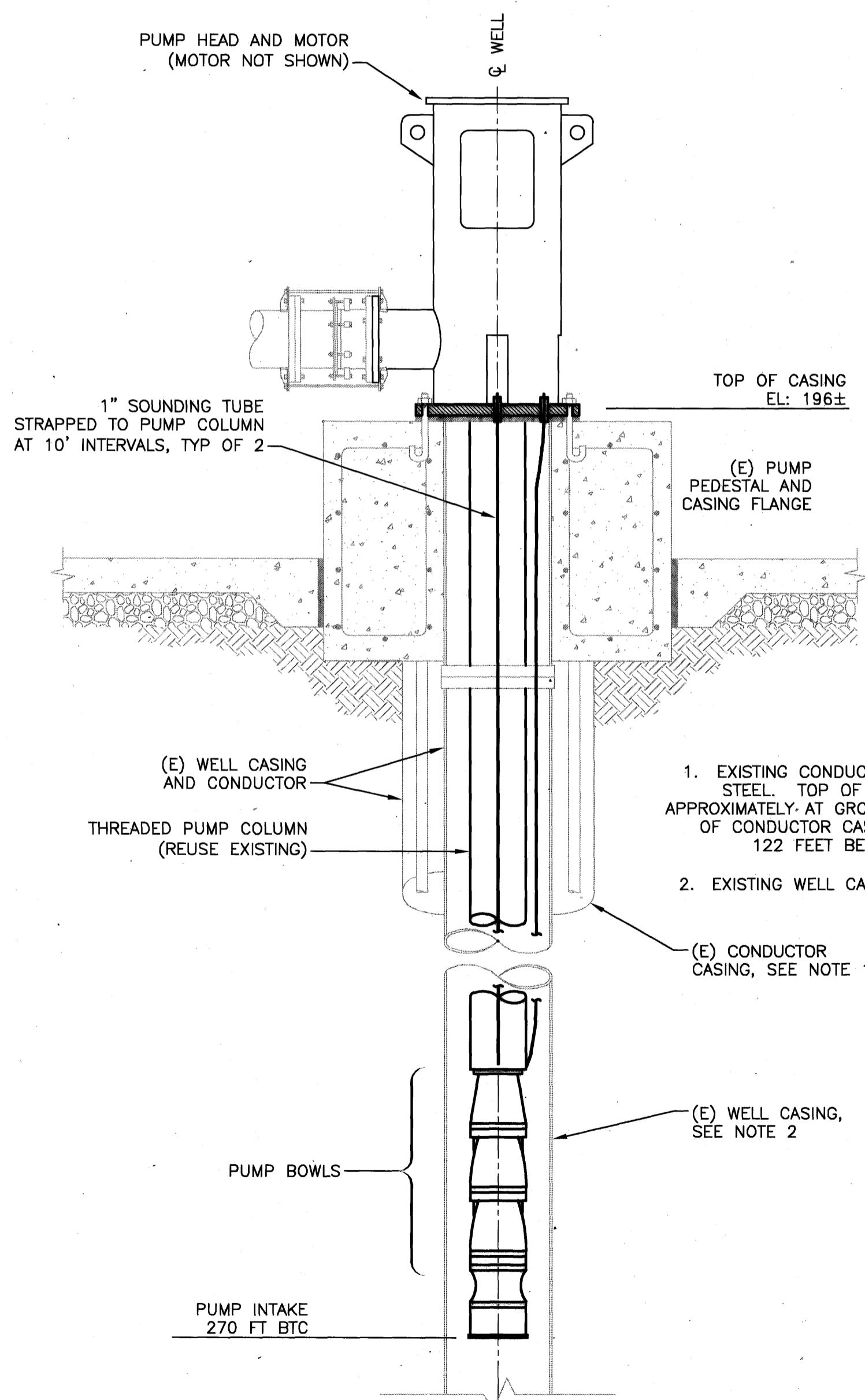
CITY OF SANTA ROSA
FARMERS LANE WELL FACILITY
PUMP REPLACEMENT PROJECT
WELL 4-1 PUMP PLAN AND SECTIONS

CONTRACT NO. C02079
SHEET 2 OF 3
FILE NO. 2017-0016

PUMP REPLACEMENT PROJECT

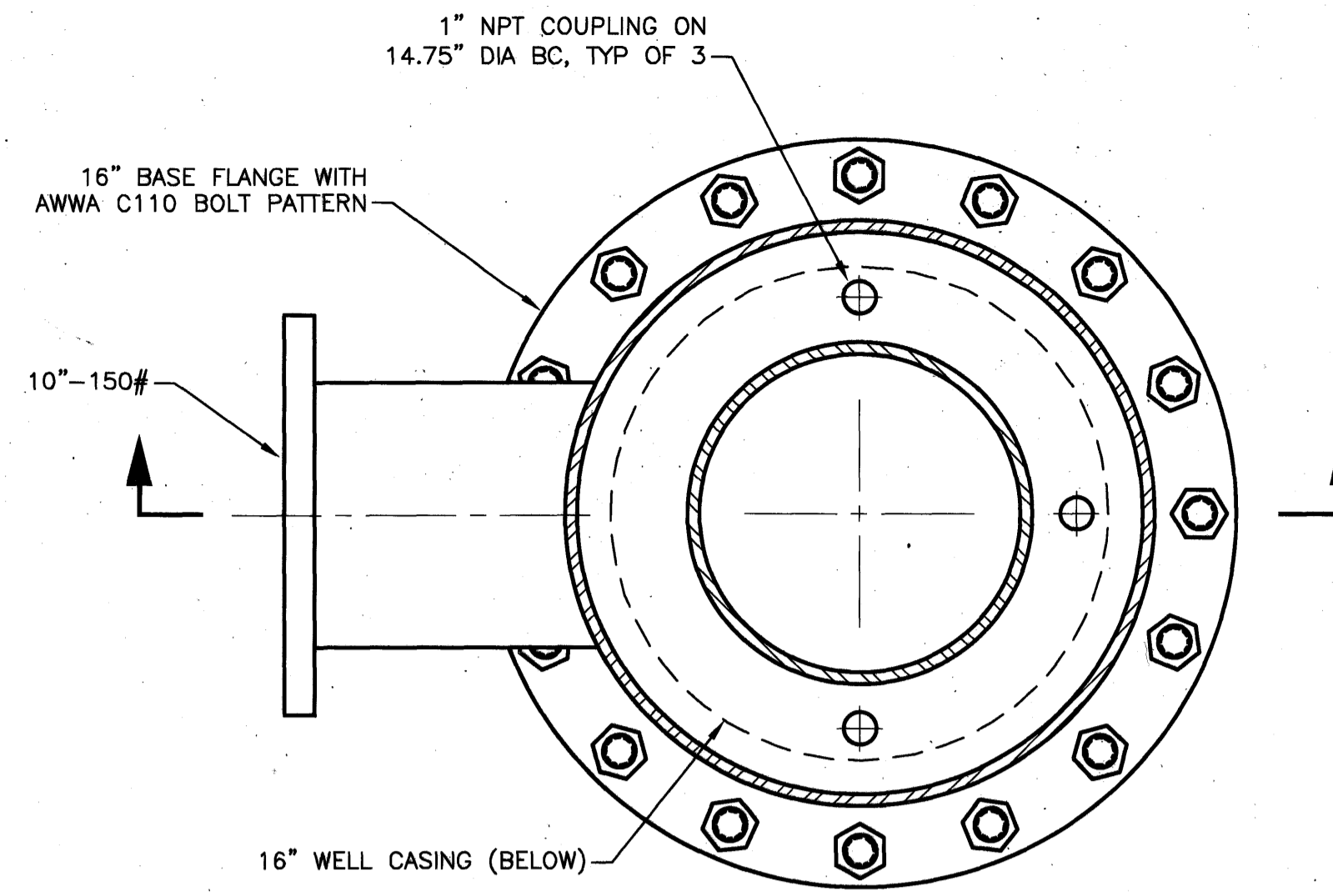


WELL 4-2 PLAN
NOT TO SCALE

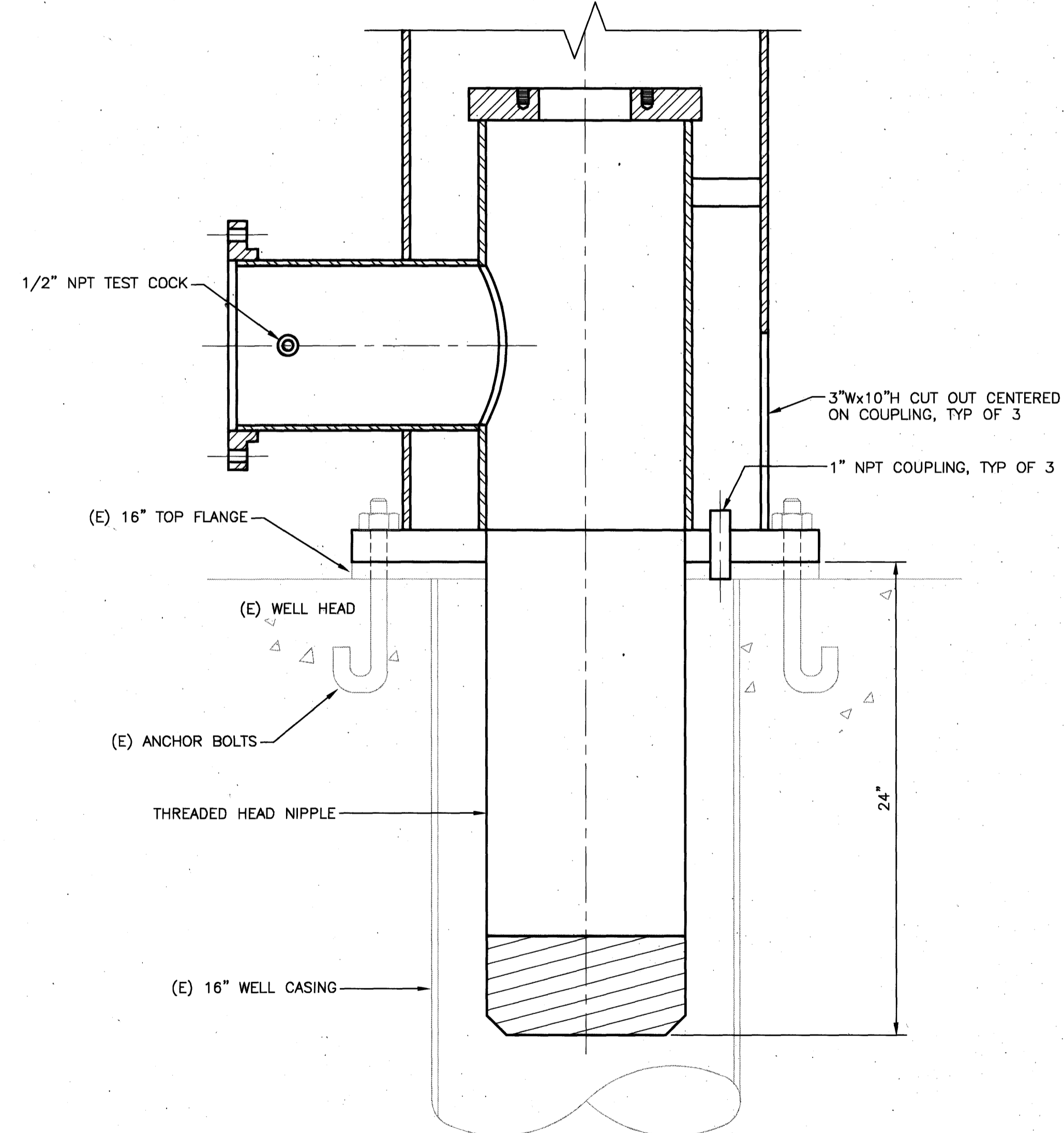


WELL 4-2 SECTION
NOT TO SCALE

- NOTES:
1. EXISTING CONDUCTOR CASING IS 30" OD STEEL. TOP OF CONDUCTOR CASING IS APPROXIMATELY AT GROUND SURFACE. BOTTOM OF CONDUCTOR CASING IS APPROXIMATELY 122 FEET BELOW GROUND SURFACE.
 2. EXISTING WELL CASING IS 16" OD STEEL.



PLAN



SECTION

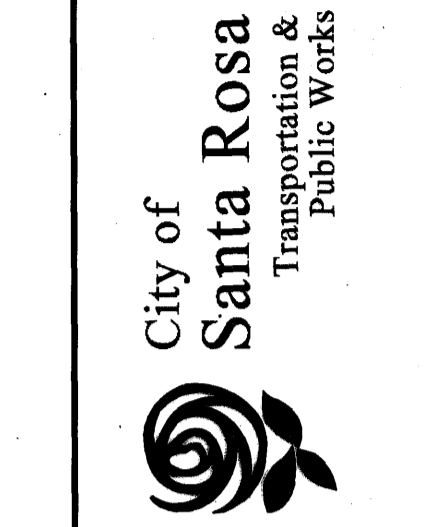
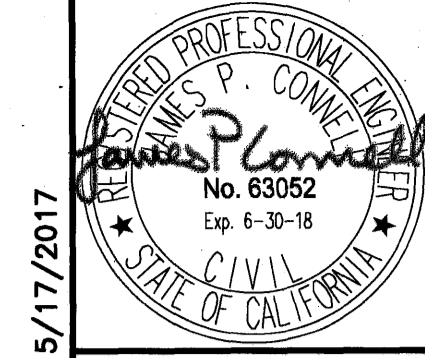
PUMP BASE (PUMP NOT SHOWN)

DETAIL 1
NOT TO SCALE

NOTES

BTC = BELOW TOP OF CASING

O:\Clients\405 city of santa rosa\12-15-53 farmers phase 2\CAD\production\equip_pre-purchase\405-12-15-53-EPP-Sht02-Sht03.dwg 5/17/2017 5:14 PM jiredel



NO.	DATE	REVISION	BY

SCALE: AS SHOWN DATE: MARCH, 2017
 DWN BY: JRR CHK BY: JPC
 APPROVED: Deputy Director - Engineering
 By: *[Signature]* Date: 4/17/17
 Collector/Ferguson

CITY OF SANTA ROSA
 FARMERS LANE WELL FACILITY
 PUMP REPLACEMENT PROJECT
**WELL 4-2 PUMP PLAN AND
 SECTIONS**
 CONTRACT NO. C02079
 SHEET 3 OF 3
 FILE NO. 2017-0016

PUMP REPLACEMENT PROJECT