



April 27, 2017

NEIGHBORHOOD STREETS INITIATIVE AND ROSELAND STREET REPAIR 2017

Dear Residents:

The City of Santa Rosa has completed the design of the upcoming pavement rehabilitation project which is commonly refers as overlay. The street selections were based the amount of deterioration on existing roadway surface. Overlay is a type of surface repair in which the deteriorated surface is ground and removed prior to new hot mix asphalt concrete placement follow by a series of rolling and compaction before allowing traffic. All existing striping and/or markings such as "STOP" legends will be reinstated, and most importantly all curb ramps within the project limits will be modified to meet the current ADA standards.. The project is anticipated to take 4 months, with an estimated start date of mid July (see reverse for Project Limits).

Completion of this project is vital to the integrity of our community infrastructure. Some of the benefits this project will bring to your neighborhood include:

- ADA IMPROVEMENTS
- IMPROVED SAFETY
- IMPROVED SKID RESISTANCE
- EXTENDED LIFE OF ROADWAY

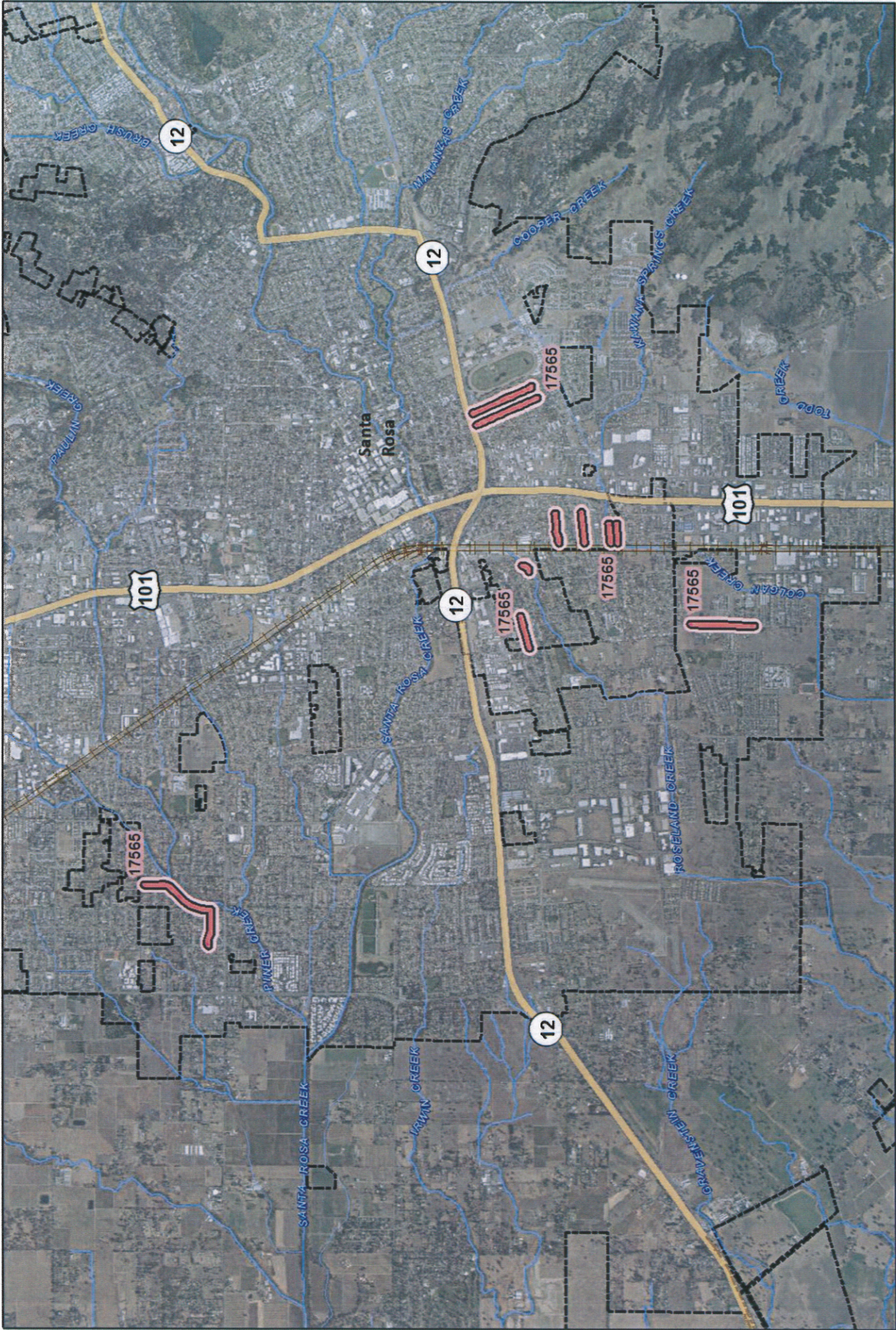
Though temporary impacts to your neighborhood are inevitable, our goal is to improve our community road surface without creating any more disturbance than necessary. The Contractor will be advised that daily and weekly activities such as mail delivery and garbage service must continue during the project. Please feel free to contact me at (707)543-3911 (or e-mail at DChen@srcity.org) if you have any questions or concerns.

We will update you with another letter approximately two weeks prior to the start of construction. In addition to written communications like this, the City has created a special website where you can track the progress of this project. Simply go to www.srcity.org/CIP, select view the map option, and click on the blue map pin that corresponds to this project. You can also view the list of all Capital Improvement Program projects and find this project under Project ID No: 02070.

Sincerely,

DANNY CHEN
Assistant Engineer





Project Areas (IFAS Charge #'s Labeled)



Project Number: 2086

Neighborhood Streets Initiative and Roseland Street Overlay

Project Status: Design

0 800 1,600 3,200 4,800 6,400 8,000 9,600 11,200 Feet City (Nov. 2015) & County (2013) Aerials shown
Map Date: 4/26/2017

- Information and features shown on this map are intended for general location use only and may contain errors. Map produced by City of Santa Rosa, Asset Management Division. -