



April 3, 2018

ACCESSIBILITY ALTERATIONS AT GALVIN PARK

Dear Users & Residents:

The City of Santa Rosa is finalizing construction plans to demolish the existing asphalt pathways around the tennis courts at Galvin park and replacing them with new concrete pathways that are compliant with federal accessibility guidelines. The pathway project will be coordinated in phases allowing tennis courts to remain accessible during construction. The project is anticipated to take two months, with an estimated start of July 2018 (see reverse for Project Limits).

Completion of this project is vital to the integrity of our community infrastructure. Some of the benefits this project will bring to your neighborhood park include:

- Safer, more defined pathways
- ADA compliant access from the parking lot to the tennis courts
- Improved drainage around the tennis courts

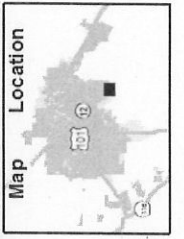
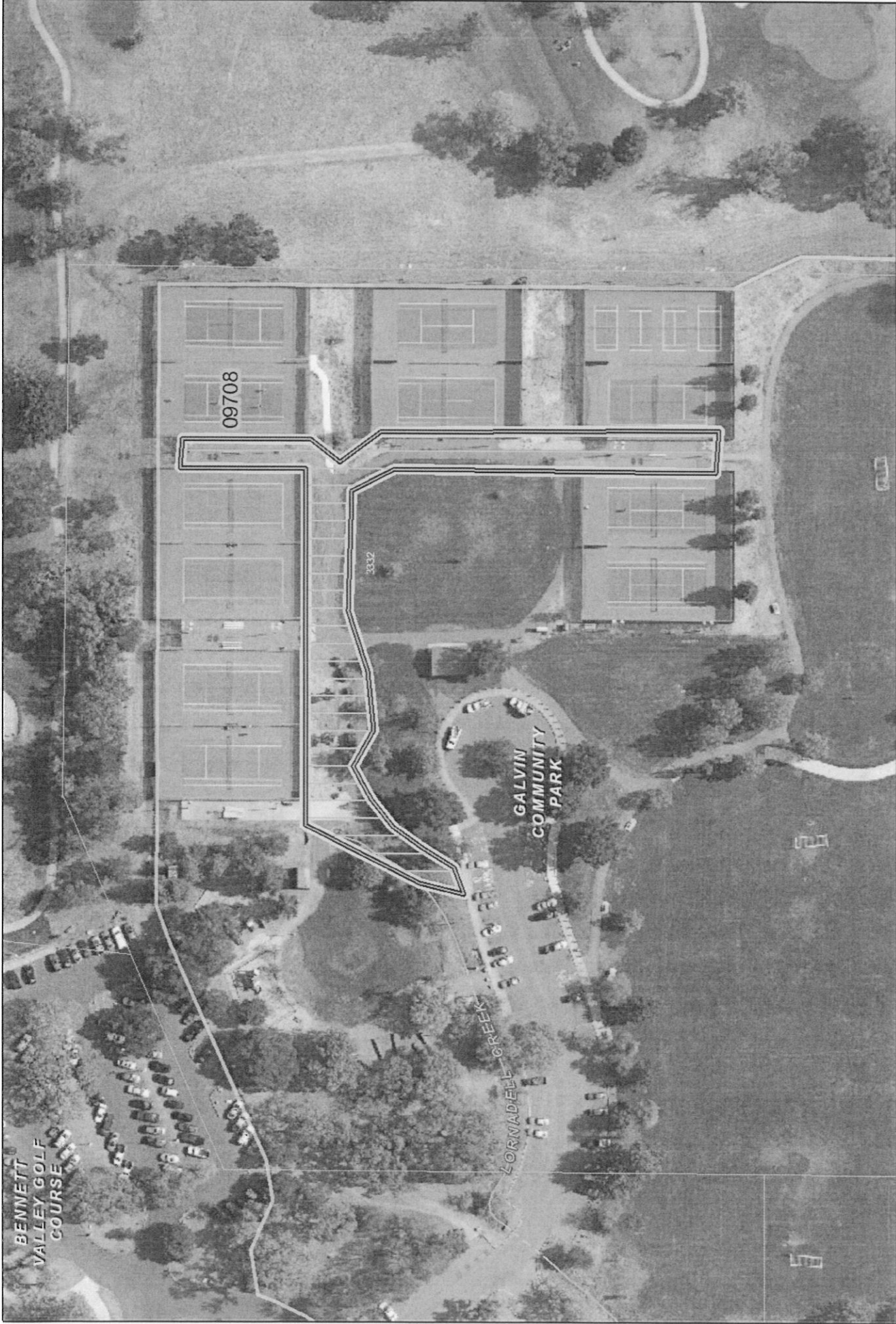
Though temporary impacts to Galvin Park are inevitable, the City and our contractor will make every effort possible to maintain fulltime access to all tennis courts throughout construction. It is the City's goal to improve our community infrastructure without creating any more disturbance than necessary. Please feel free to contact me at (707) 543-4508 (or e-mail at gbailey@srcity.org) if you have any questions or concerns.

We will update you with another notification approximately two weeks prior to the start of construction. In addition to written communications like this, the City has created a special website where you can track the progress of this project. Simply go to www.srcity.org/CIP, view the map, and click on the blue map pin that corresponds to this project. You can also view the list of all Capital Improvement Program projects and find this project under Project ID No: 02145.

Sincerely,

GRANT BAILEY, P.E.
Associate Civil Engineer

Attachment: Project Limits



Project Areas (IFAS Charge #'s Labeled)

Public Works

0 100 200 Feet City (Nov. 2015) & County (2013) Aerials shown
Map Date: 12/28/2017

2145

Project Number:

Accessibility Alterations at Galvin Park

Project Status: Design

- Information and features shown on this map are intended for general location use only and may contain errors. Map produced by City of Santa Rosa, Asset Management Division. -