



CITY OF SANTA ROSA

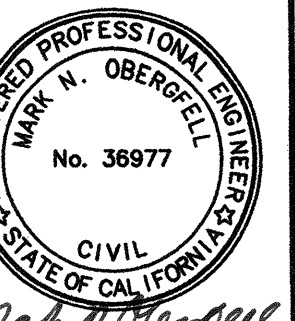
IMPROVEMENT PLANS FOR ACCESSIBILITY ALTERATIONS AT GALVIN PARK

CONTRACT No. C02145

MAY 2018

FOR USE IN CONJUNCTION WITH :
CITY OF SANTA ROSA DESIGN AND CONSTRUCTION STANDARDS
CALIFORNIA BUILDING CODE

BEFORE EXCAVATING
CALL U.S.A.
UNDERGROUND SERVICE ALERT
800-642-2444
TWO WORKING DAYS BEFORE ALL
PLANNED WORK OPERATIONS

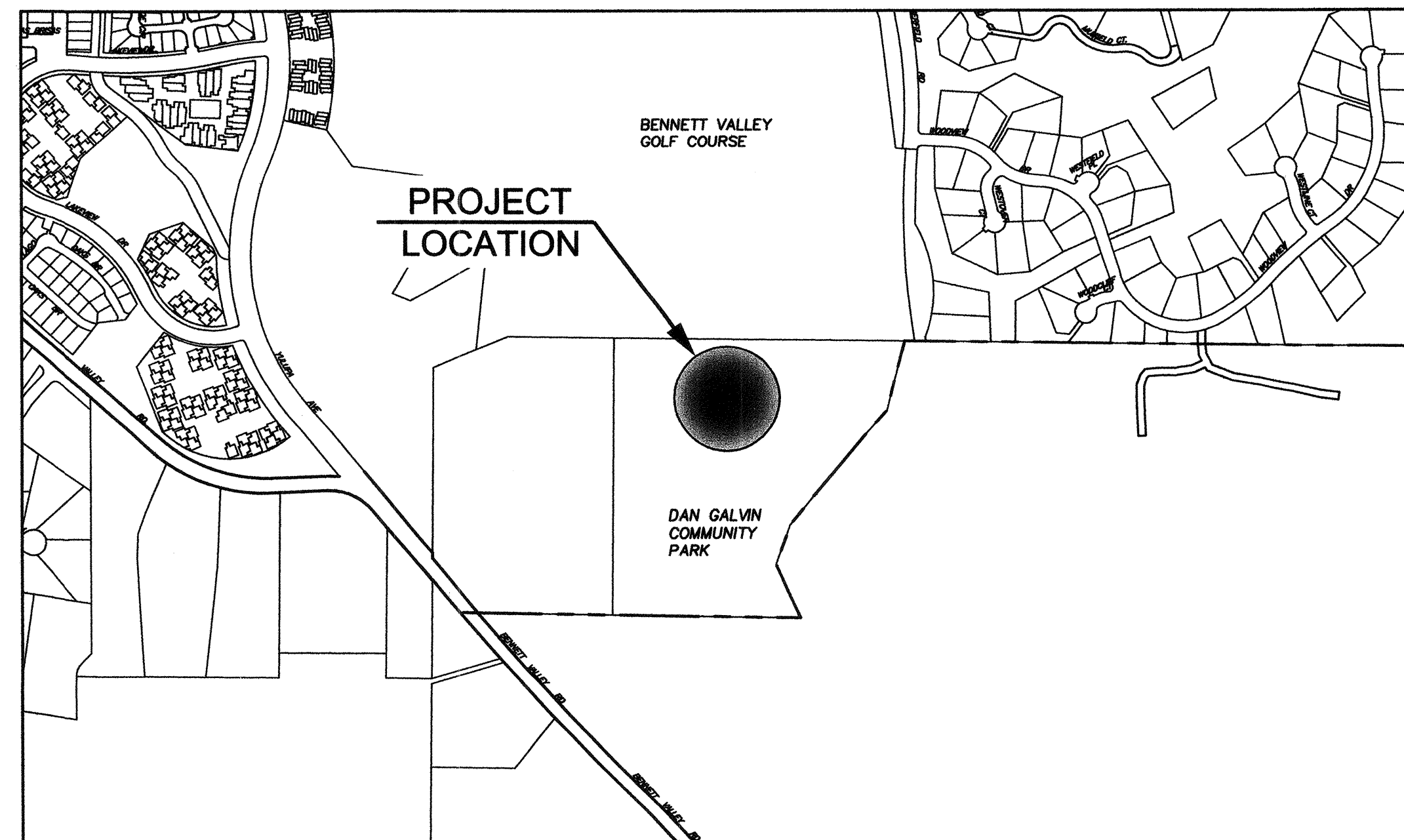


Coastland Civil Engineering, Inc.
1400 Neotomas Avenue, Santa Rosa, CA 95405
707.571.8005

NO.	DATE	REVISION	BY



LOCATION MAP



VICINITY MAP
NOT TO SCALE

Dept.	Signature	Date
Design/Const	<i>Stephen Dittmer</i>	4/30/18
Survey	<i>Walter Brown</i>	4/30/18
TPW Field Svc's		
Utilities Op's		
Traffic		
Parks	<i>JS</i>	4/30/18
Storm Water		

INDEX OF SHEETS

Sheet No.	Sheet Title
1	TITLE SHEET
2	ABBREVIATIONS, LEGEND, GENERAL NOTES AND DETAILS
3	DEMOLITION PLAN
4	FINISHED GRADING PLAN
5	FINISHED GRADING PLAN
6	FINISHED GRADING PLAN
7	SITE AND DIMENSION PLAN
8	SITE AND DIMENSION PLAN
9	PEDESTRIAN RAMP AND STEP DETAILS

RECORD PLAN DATA

PROJECT START:	_____	WATER SERVICE TYPE:	_____
PROJECT END:	_____	MANUFACTURER:	_____
GEN. CONTRACTOR:	_____	FIRE HYDRANT TYPE:	_____
SUPERINTENDENT:	_____	MANUFACTURER:	_____
UNDERGROUND CONTRACTOR:	_____	INSPECTOR:	_____
FOREMAN:	_____	CONSTRUCTION MANAGER:	_____
SEWER PIPE TYPE:	_____	RECORD PLANS BY:	_____
MANUFACTURER:	_____	ADDITIONAL INFO:	_____
SEWER FITTINGS MANUFACTURER:	_____		
M.H. MANUFACTURER:	_____		
WATER PIPE TYPE:	_____		
MANUFACTURER:	_____		
WATER VALVE MANUFACTURER:	_____		
WATER FITTINGS MANUFACTURER:	_____		

SCALE: AS SHOWN
DATE: MAY 2018
CHK BY: MNO
APPROVED: Deputy Director - Engineering
By: *Lois Urbanek* Date: 5/1/18

CITY OF SANTA ROSA
ACCESSIBILITY ALTERATIONS AT
GALVIN PARK
TITLE SHEET

CONTRACT NO.
C02145
SHEET 1 OF 9
FILE NO. 2018-0015

ABBREVIATIONS

AC ASPHALT CONCRETE	GV GATE VALVE	SSMH SANITARY SEWER MANHOLE
AB AGGREGATE BASE	HDPE HIGH DENSITY POLYETHYLENE	SSCO SANITARY SEWER CLEANOUT
ACP ASBESTOS CEMENT PIPE	HP HIGH POINT	STA STATION
A.P.N. ASSESSORS PARCEL NUMBER	IC INTERCONNECT	STL STEEL PIPE
A.R.V. AIR RELEASE VALVE	IG INVERT GRADE	STD STANDARD
BC BEGIN CURVE	INV INVERT GRADE	TB TOP OF BANK
BFP BACK FLOW PREVENTER	IP IRON PIPE	TC TOP OF CURB
BO BLOWOFF	JP JOINT POLE	TCE TEMPORARY CONSTRUCTION EASEMENT
BRC BEGIN REVERSE CURVE	JT JOINT TRENCH	TEL TELEPHONE
BSW BACK OF SIDEWALK	LAT SANITARY SEWER LATERAL	TG TOP OF GRATE
BWV BACKWATER VALVE	LF LINEAR FEET	TOE TOE OF SLOPE
BVC BEGIN VERTICAL CURVE	LG LIP OF GUTTER	TOP TOP OF PIPE
CB CATCH BASIN	LT LEFT	TP TELEPHONE POLE
C&G CURB & GUTTER	MB MAILBOX	TS TRAFFIC SIGNAL
CJ CAST IRON	MH MANHOLE	TW TOP OF WALL
C CENTERLINE	OG ORIGINAL GROUND	TYP. TYPICAL
CLC CONTROL LINE COORDINATE	OD OUTSIDE DIMENSION	U UNDERGROUND UTILITY
CMP CORRUGATED METAL PIPE	OH OVERHEAD UTILITY	UG UNDERGROUND
CO CLEANOUT	PB PULL BOX	UPC UNIFORM PLUMBING CODE
CONC CONCRETE	PC POINT OF CURVATURE	UTIL UTILITY
CP CONTROL POINT	PCC POINT OF COMPOUND CURVE	VC VERTICAL CURVE
CR CURB RETURN	PI POINT OF INTERSECTION	VIF VERIFY IN FIELD
CSR CORRUGATED STEEL PIPE	PL PROPERTY LINE	VLT VAULT
CV CHECK VALVE	PVC POLY VINYL CHLORIDE	VAR. VARIES
DET. DETECTOR	PVI POINT OF VERTICAL INTERSECTION	W, WTR WATER, WATER MAIN
DI DROP INLET	PRC POINT OF REVERSE CURVATURE	WM WATER MAIN
DIP DUCTILE IRON PIPE	R RADIUS	WS WATER SERVICE
DWY DRIVEWAY	R.C. RELATIVE COMPACTION	W SER WATER SERVICE
E ELECTRICAL, ELECTRICAL CONDUIT	RCP REINFORCED CONCRETE PIPE	WV WATER VALVE
EC END CURVE	RET RETAINING	< PT ANGLE POINT
EG EXISTING GRADE	RPB REDUCED PRESSURE BACKFLOW PREVENTER	
ELEC ELECTRIC	R&R REMOVE & REPLACE	
EL. ELEV ELEVATION	RT. RIGHT	
EP EDGE OF PAVEMENT	R/W RIGHT-OF-WAY	
EVC END VERTICAL CURVE	S SLOPE	
EX(E) EXISTING	SD STORM DRAIN	
FBG FEET BELOW GRADE	SDE STORM DRAIN EASEMENT	
FC FACE OF CURB	SDMH STORM DRAIN MANHOLE	
FG FINISHED GRADE	SL STREET LIGHT	
FS FINISHED SURFACE	SS SANITARY SEWER	
F FLOW LINE	SSE SANITARY SEWER EASEMENT	
FS FINISH SURFACE	SS LAT SANITARY SEWER LATERAL	
FSW FRONT OF SIDEWALK		
G GAS		
GB GRADE BREAK		
G SER GAS SERVICE		

GENERAL NOTES

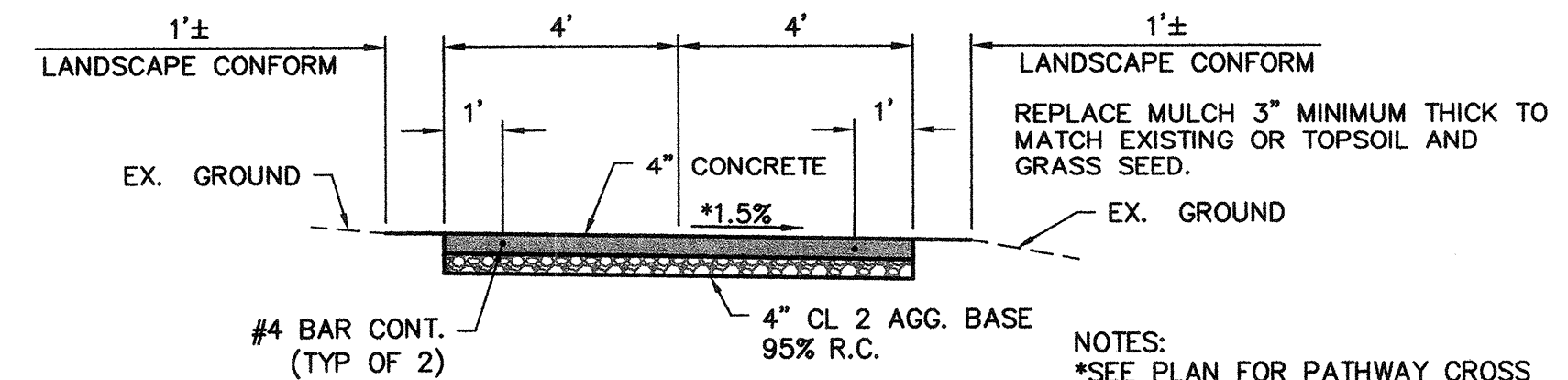
- ALL GRADING OPERATIONS SHALL ALSO COMPLY WITH CHAPTER 11, 33 AND APPENDIX CHAPTER 33A OF THE CALIFORNIA BUILDING CODE, LATEST EDITIONS, UNDER THE DIRECTION OF THE SOILS ENGINEER.
- ALL QUALITY OF WORK, MATERIALS AND CONSTRUCTION SHALL CONFORM TO THE CITY OF SANTA ROSA STANDARD PLANS, THE CONSTRUCTION SPECIFICATIONS FOR PUBLIC IMPROVEMENTS, THE SPECIAL PROVISIONS FOR THIS PROJECT AND THE STATE STANDARD SPECIFICATIONS AND STANDARD PLANS. THE CONTRACTOR IS RESPONSIBLE FOR UNDERSTANDING ALL STANDARDS PERTAINING TO THIS PROJECT.
- THE CONTRACTOR SHALL CALL UNDERGROUND SERVICE ALERT (USA) AT 1-800-227-2600 NO LESS THAN 2 WORKING DAYS PRIOR TO ANY EXCAVATION FOR MARKOUTS OF EXISTING UNDERGROUND FACILITIES.
- TRENCH EXCAVATIONS, SHORING, SCAFFOLDING AND SAFETY ARE THE SOLE RESPONSIBILITY OF THE CONTRACTOR. ATTENTION IS DRAWN TO THE STATE OF CALIFORNIA SAFETY ORDERS DEALING WITH "EXCAVATIONS AND TRENCHES". ANY TRENCH OVER FIVE (5) FEET IN DEPTH REQUIRES A TRENCH PERMIT FROM THE CALIFORNIA DIVISION OF INDUSTRIAL SAFETY.
- IF AN UNMARKED UTILITY IS ENCOUNTERED, OR IF UNABLE TO LOCATE A MARKED UTILITY AFTER EXCAVATING TO THE LIMITS SPECIFIED BY U.S.A. LAWS, THE CONTRACTOR SHALL IMMEDIATELY NOTIFY THE OWNER OF THAT UTILITY AND THE ENGINEER.
- THE CONTRACTOR SHALL PROTECT AND PRESERVE CITY MONUMENTS. THE CONTRACTOR SHALL COORDINATE 10 WORKING DAYS IN ADVANCE WITH THE CITY OF SANTA ROSA SURVEYOR FOR REFERENCING OF EXISTING MONUMENTS. THE CONTRACTOR SHALL RECONSTRUCT DISTURBED MONUMENTS IN ACCORDANCE WITH CITY STANDARD 280.
- OVERHEAD UTILITIES ARE NOT SHOWN ON THE PLANS. THE CONTRACTOR SHALL INVESTIGATE THE SITE AND BE AWARE OF LIMITED OVERHEAD CLEARANCES.
- CONTRACTOR SHALL MAINTAIN ACCESS TO ALL PARK FACILITIES THROUGH ALL PHASES OF CONSTRUCTION. PEDESTRIAN ACCESS TO ALL COURTS SHALL BE MAINTAINED AT ALL TIMES. ANY REQUEST TO TEMPORARILY CLOSE ANY COURTS MUST BE APPROVED IN ADVANCE IN WRITING BY THE PARK AND RECREATION DEPARTMENT.
- IN THE EVENT AN ARTIFACT OF POTENTIAL HISTORICAL SIGNIFICANCE IS UNEARTHED, ALL CONSTRUCTION SHALL HALT IMMEDIATELY AND THE ENGINEER SHALL BE NOTIFIED.
- CONTRACTOR SHALL NOT USE PARKING STALLS FOR LAYDOWN AREA OTHER THAN THOSE SPECIFIED BY THE PARKS AND RECREATION DEPARTMENT.
- ALL FIELD CHANGES/CHANGE ORDERS MUST BE APPROVED BY THE PARKS AND RECREATION DEPARTMENT PRIOR TO CONSTRUCTION.

GRADING NOTES:

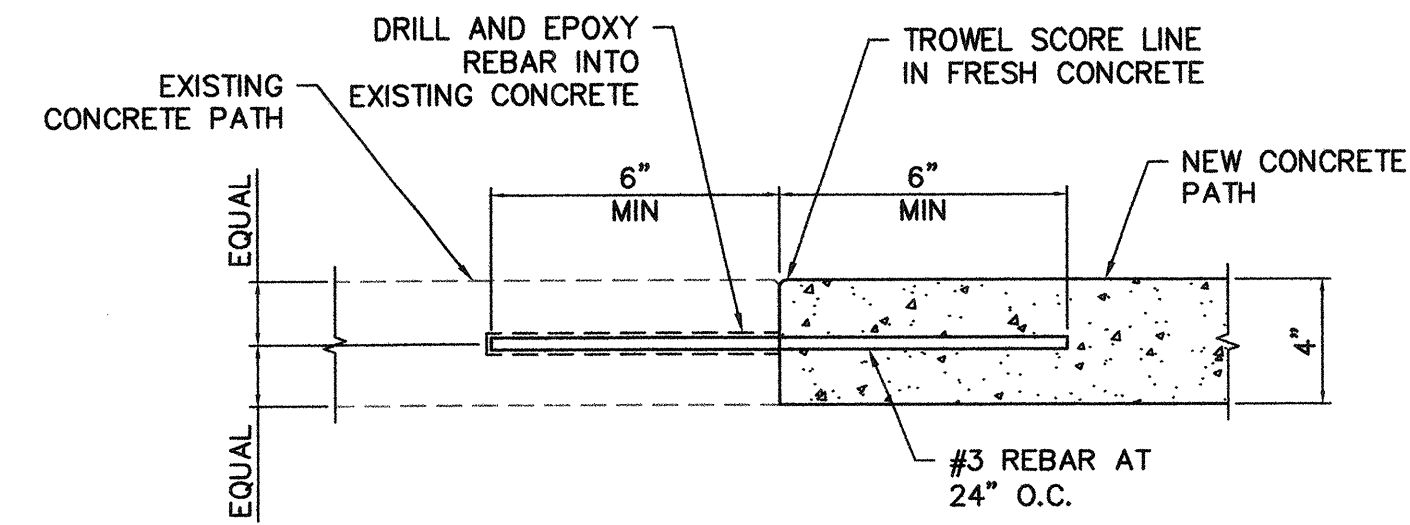
- DUST CONTROL SHALL BE PROVIDED BY THE CONTRACTOR DURING ALL PHASES OF CONSTRUCTION TO THE SATISFACTION OF THE ENGINEER.
- TRENCH BACKFILL SHALL CONSIST OF GRANULAR MATERIAL PER CITY STD. 215. TRENCH BACKFILL SHALL BE MOISTURE CONDITIONED AS NECESSARY, AND PLACED IN HORIZONTAL LAYERS NOT EXCEEDING EIGHT INCHES IN THICKNESS, BEFORE COMPACTION. EACH LAYER SHALL BE COMPACTED TO AT LEAST 90 PERCENT RELATIVE COMPACTION AS DETERMINED BY ASTM TEST D-1557. THE TOP LIFT OF TRENCH BACKFILL UNDER VEHICLE PAVEMENTS SHALL BE MOISTURE CONDITIONED AS NECESSARY AND COMPACTED TO AT LEAST 95 PERCENT RELATIVE COMPACTION. JETTING OR PONDING OF TRENCH BACKFILL TO AID IN ACHIEVING THE RECOMMENDED DEGREE OF COMPACTION SHALL NOT BE USED.
- THE CONTRACTOR SHALL PERFORM EARTHWORK CALCULATIONS WHICH ACCOUNT FOR THE PROPOSED METHODS OF GRADING AND TRENCHING AS DEEMED NECESSARY FOR BIDDING AND CONSTRUCTION PURPOSES. IT SHALL BE THE SOLE RESPONSIBILITY OF THE CONTRACTOR TO ACCOUNT FOR THE COST OF ANY NECESSARY IMPORT OR EXPORTING OF EARTH IN THE BID IN ORDER TO ACHIEVE THE GRADES SHOWN ON THE PLAN. NO ADDITIONAL COMPENSATION SHALL BE ALLOWED FOR THIS ITEM OF WORK UNLESS THE OWNER REQUESTS ADDITIONAL WORK BE PERFORMED.
- ALL UNSUITABLE AND UNUSABLE EXCESS SOIL MATERIAL SHALL BE REMOVED AND DISPOSED OF OFF THE PROJECT SITE.

ACCESSIBILITY NOTES:

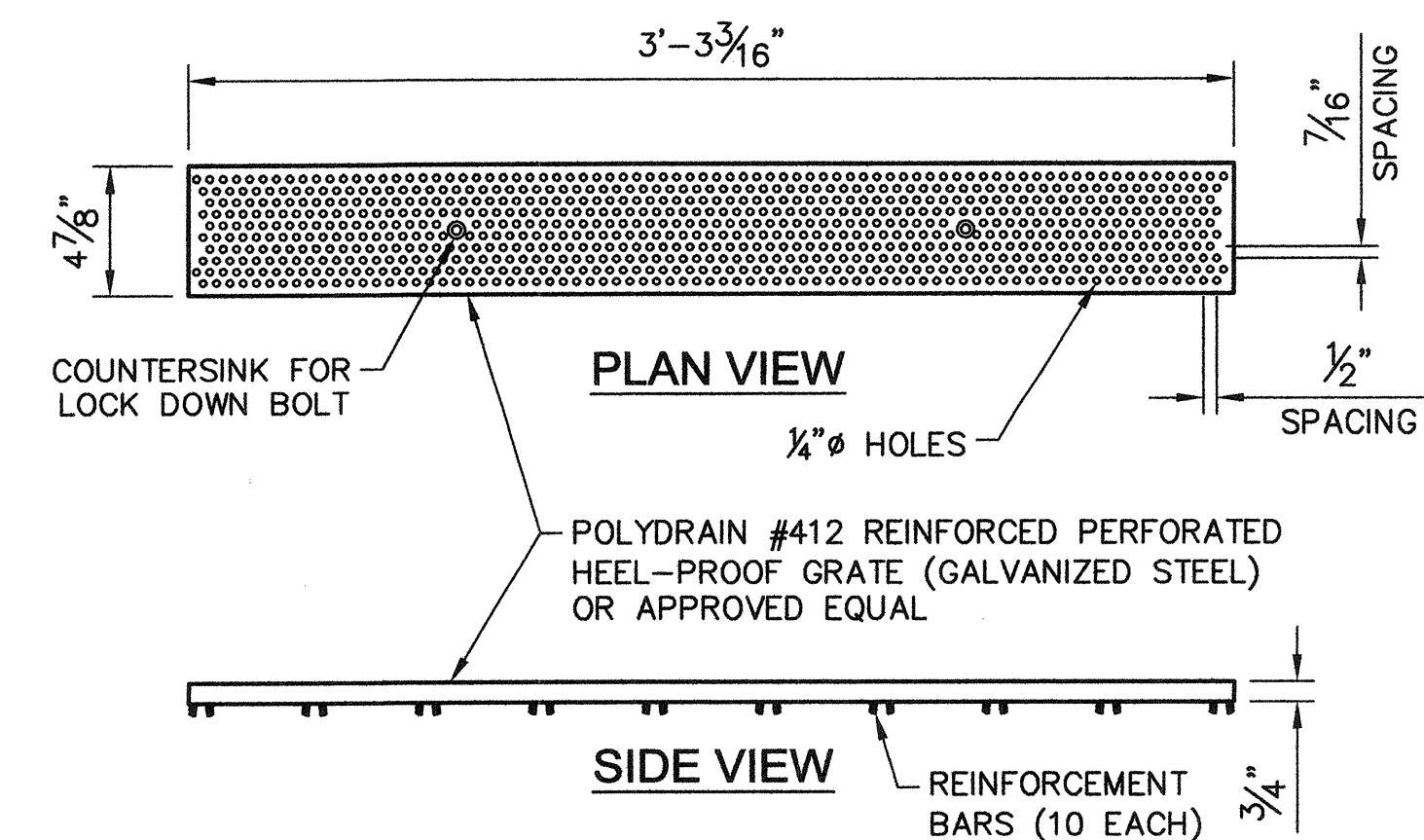
- 3 INCH MAXIMUM DROP ADJACENT TO NEW PATHWAYS.
- ¼ INCH MAXIMUM CHANGE IN LEVEL ON ACCESSIBLE ROUTES.
- ACCESSIBLE PATHWAY SLOPES: 4.5% MAXIMUM SLOPE (EXCEPT RAMPS), 1.8% MAXIMUM CROSS SLOPE, 1.8% MAXIMUM SLOPE IN ANY DIRECTION AT LANDINGS AND PATHWAY INTERSECTIONS (INCLUDING RADIUS CORNERS). EXCEPTION: CONFORM AREAS FROM NEW TO EXISTING CONSTRUCTION AS APPROVED BY THE CITY ENGINEER.
- SITE FURNISHINGS OR OTHER OBJECTS SHALL NOT BE PLACED WITHIN REQUIRED CLEAR GROUND SPACE.
- RE-INSTALLED TRASH CANS MUST BE PLACED WITHIN THE ACCESSIBLE PATH WHERE SLOPE IS LESS THAN 2% IN ANY DIRECTION.
- THE CLEAR WIDTH OF ACCESSIBLE ROUTES SHALL NOT BE LESS THAN 48 INCHES.



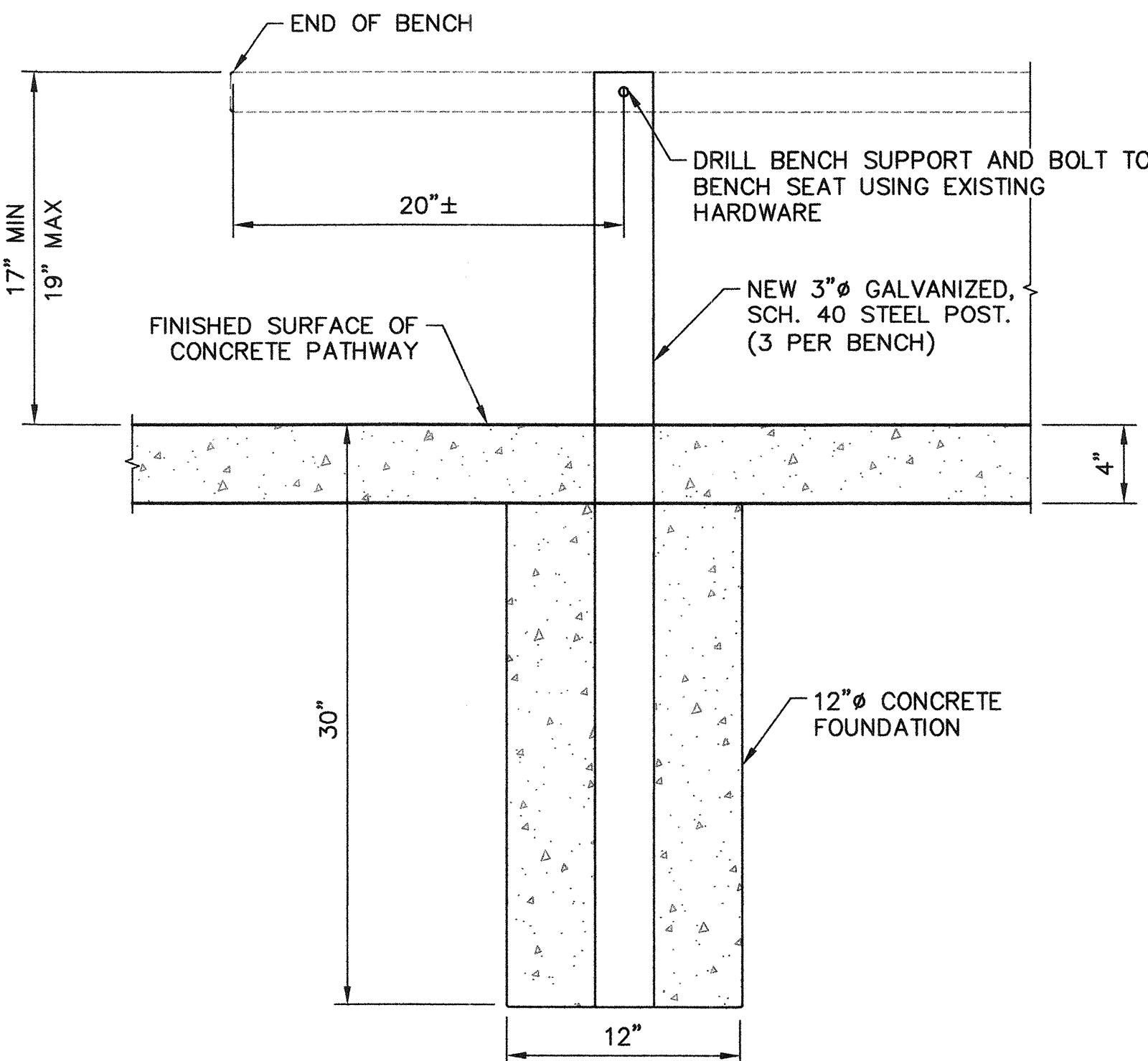
1 TYPICAL PATHWAY SECTION
SCALE: NONE



2 CONCRETE DOWEL DETAIL
SCALE: NONE



3 TRENCH DRAIN DETAIL
SCALE: NONE

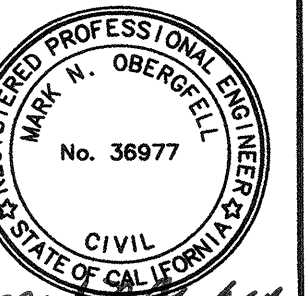


4 BENCH DETAIL
SCALE: NONE

LEGEND

DESCRIPTION OF LINETYPE	PROPOSED	EXISTING
PROPERTY LINE	N/A	---
EASEMENT	N/A	---
FLOWLINE	N/A	---
CENTERLINE/CONTROL LINE	---	---
CHAIN LINK FENCE	---o---o---	---o---o---
WOOD FENCE	N/A	---o---o---
WIRE FENCE	N/A	---o---o---
WATER MAIN PIPE	N/A	---w---
SANITARY SEWER PIPE	N/A	---ss---
STORM DRAIN PIPE	---s---	---s---
GAS LINE	N/A	---g---
TRENCH DRAIN	---t---	N/A
TELEPHONE LINE/CONDUIT	N/A	---t---
ELECTRICAL LINE/CONDUIT	N/A	---e---
OVERHEAD UTILITY	N/A	---ohu---
IRRIGATION SLEEVE	---irr---	N/A

DESCRIPTION OF SYMBOL	PROPOSED	EXISTING
CONCRETE	[Pattern]	[Pattern]
ASPHALT CONCRETE PAVEMENT REMOVAL	[Pattern]	N/A
CONCRETE PAVEMENT REMOVAL	[Pattern]	N/A
ASPHALT CONCRETE	N/A	[Pattern]
EDGE OF PAVEMENT	---	---
WATER MAIN GATE VALVE	N/A	[Symbol]
WATER MAIN BLOWOFF	N/A	[Symbol]
WATER METER	N/A	[Symbol]
FIRE HYDRANT	N/A	[Symbol]
BACKFLOW PREVENTER	N/A	[Symbol]
SANITARY SEWER MANHOLE	N/A	[Symbol]
SANITARY SEWER CLEANOUT	N/A	[Symbol]
STORM DRAIN MANHOLE	N/A	[Symbol]
STORM DRAIN CURB INLET/CATCH BASIN	N/A	[Symbol]
STORM DRAIN DROP INLET (TOP OPENING)	[Symbol]	[Symbol]
STORM DRAIN DROP INLET (SIDE OPENING)	N/A	[Symbol]
SIGN	---	[Symbol]
STREET LIGHT	N/A	[Symbol]
TREE AND DRIP LINE	N/A	[Symbol]
SURVEY CONTROL POINT	N/A	[Symbol]
JOINT UTILITY POLE	N/A	[Symbol]

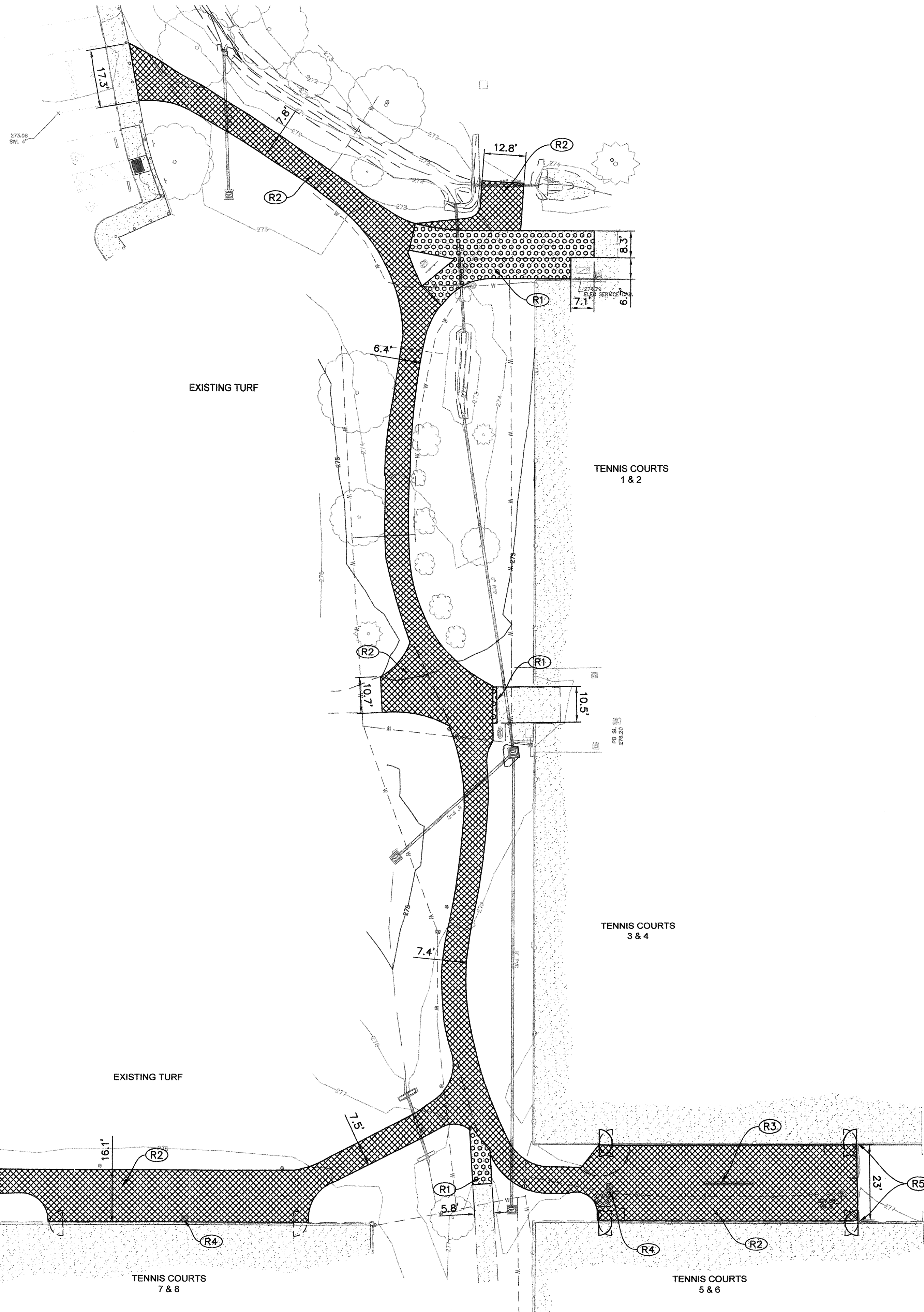
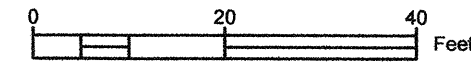


Coastland Civil Engineering, Inc.
1400 Neolomas Avenue, Santa Rosa, CA 95405
707.571.8037 Fax

NO.	DATE	REVISION

SCALE: AS SHOWN
DWN BY: JMM
DATE: MAY 2018
CHK BY: MNO
APPROVED: Deputy Director - Engineering
By: [Signature] Date: 5/1/18
Lori Urbaniak

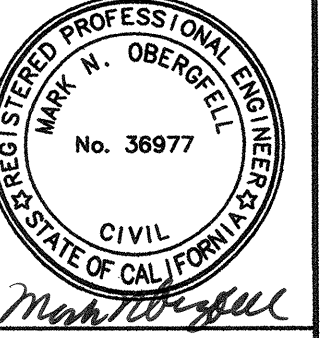
CITY OF SANTA ROSA
ACCESSIBILITY ALTERATIONS AT
GALVIN PARK
ABBREVIATIONS, LEGEND,
GENERAL NOTES AND DETAILS
CONTRACT NO. C02145
SHEET 2 OF 9
FILE NO. 2018-0015



DEMOLITION NOTES

- (R1) SAWCUT AND REMOVE EXISTING CONCRETE PATH.
- (R2) REMOVE EXISTING ASPHALT CONCRETE PATH.
- (R3) REMOVE AND SALVAGE EXISTING METAL BENCH SEAT FOR REINSTALLATION. REMOVE AND DISPOSE OF EXISTING BENCH SUPPORTS AND CONCRETE FOOTINGS.
- (R4) REMOVE AND SALVAGE EXISTING TRASH CAN AND ENCLOSURE AND RE-INSTALL UPON COMPLETION OF PAVING.
- (R5) REMOVE EXISTING CHAIN LINK FENCE AND GATE.

Images: Xref: 12726-TP.dwg(12726-TP.dwg) Plot Date: Apr 20, 2018 at 13:19
 Path: F:\C\13_30 Projects\12726.dwg(12726-SP.dwg) Layout Name: 3

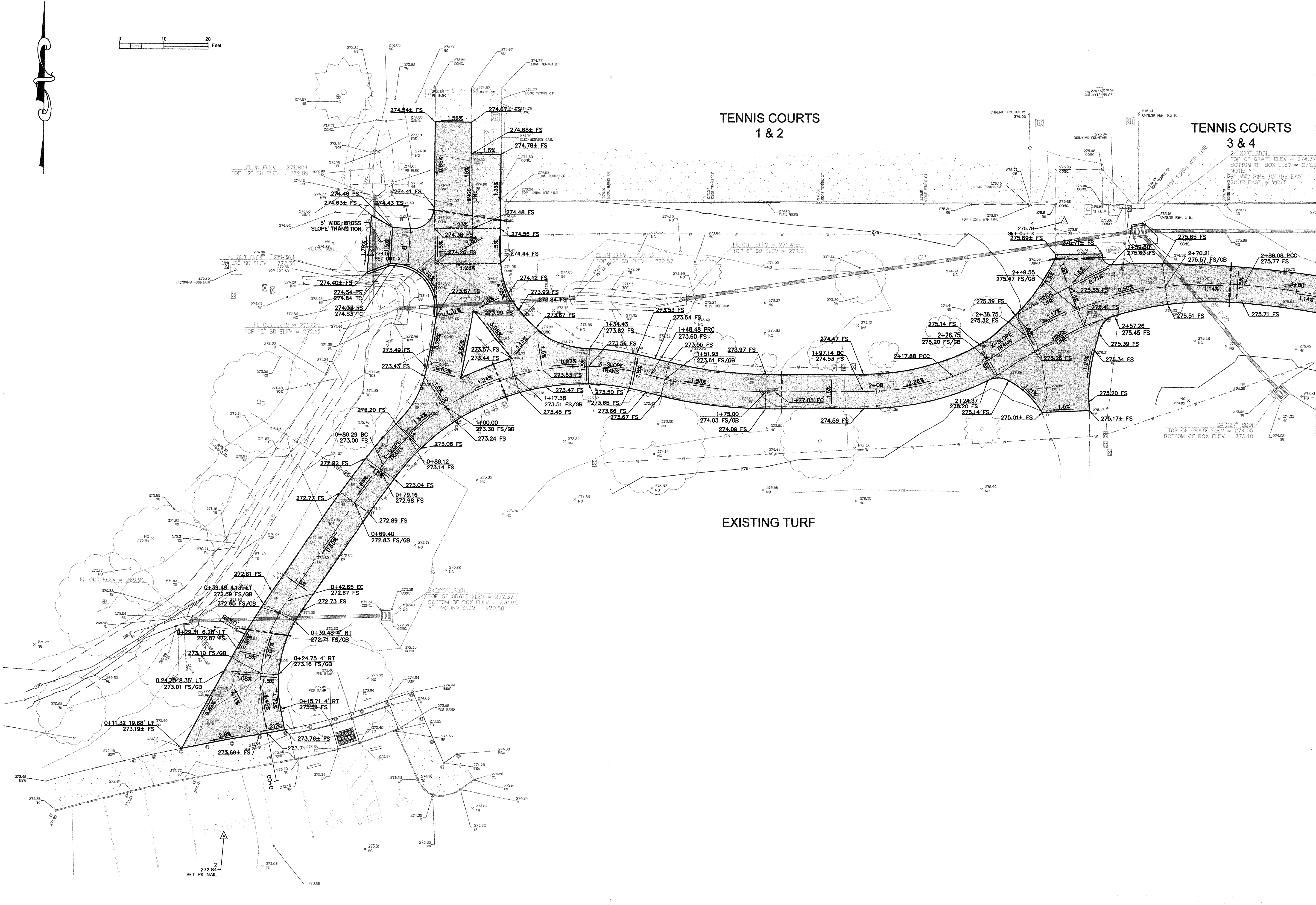
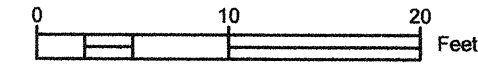


Coastland Civil Engineering, Inc.
 1400 Neolomas Avenue, Santa Rosa, CA 95405
 707.571.8005

NO.	DATE	REVISION	BY

SCALE: 1"=20'
 DWN BY: JMM
 DATE: MAY 2018
 CHK BY: MNO
 APPROVED: *Lori Urbaneck* Deputy Director - Engineering
 Date: 5/1/18
 By: Lori Urbaneck

CITY OF SANTA ROSA
 ACCESSIBILITY ALTERATIONS AT
 GALVIN PARK
DEMOLITION PLAN
 CONTRACT NO. C02145
 SHEET 3 OF 9
 FILE NO. 2018-0015

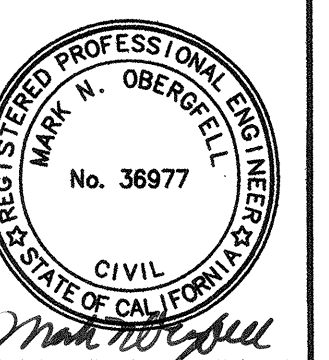


TENNIS COURTS
1 & 2

TENNIS COURTS
3 & 4

EXISTING TURF

MATCH LINE STA 3+05 - SEE SHEET 5



Coastland Civil Engineering, Inc.
1400 Neotomas Avenue, Santa Rosa, CA 95405
707.571.8005

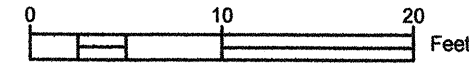
NO.	DATE	REVISION

SCALE: 1"=10'
DWN BY: JWM
DATE: MAY 2018
CHK BY: MNO
APPROVED: Deputy Director - Engineering
By: *Lori Urbanek* Date: 5/1/18
Lori Urbanek

CITY OF SANTA ROSA
ACCESSIBILITY ALTERATIONS AT
GALVIN PARK
FINISHED GRADING PLAN

CONTRACT NO.
C02145
SHEET 4 OF 9
FILE NO.2018-0015

Images: Xref: 123726-TP.dwg; 123726-DEM.dwg
Path: F:\Civil 3D Projects\123726.dwg\123726-SP.dwg
Layout Name: 4 Plot Date: Apr 20, 2018 at 13:20



MATCH LINE STA 3+05 - SEE SHEET 4

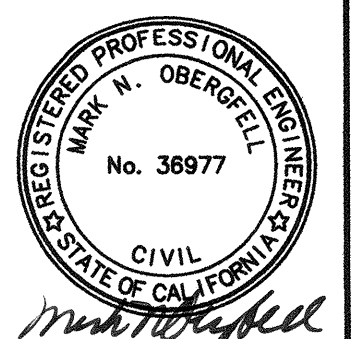
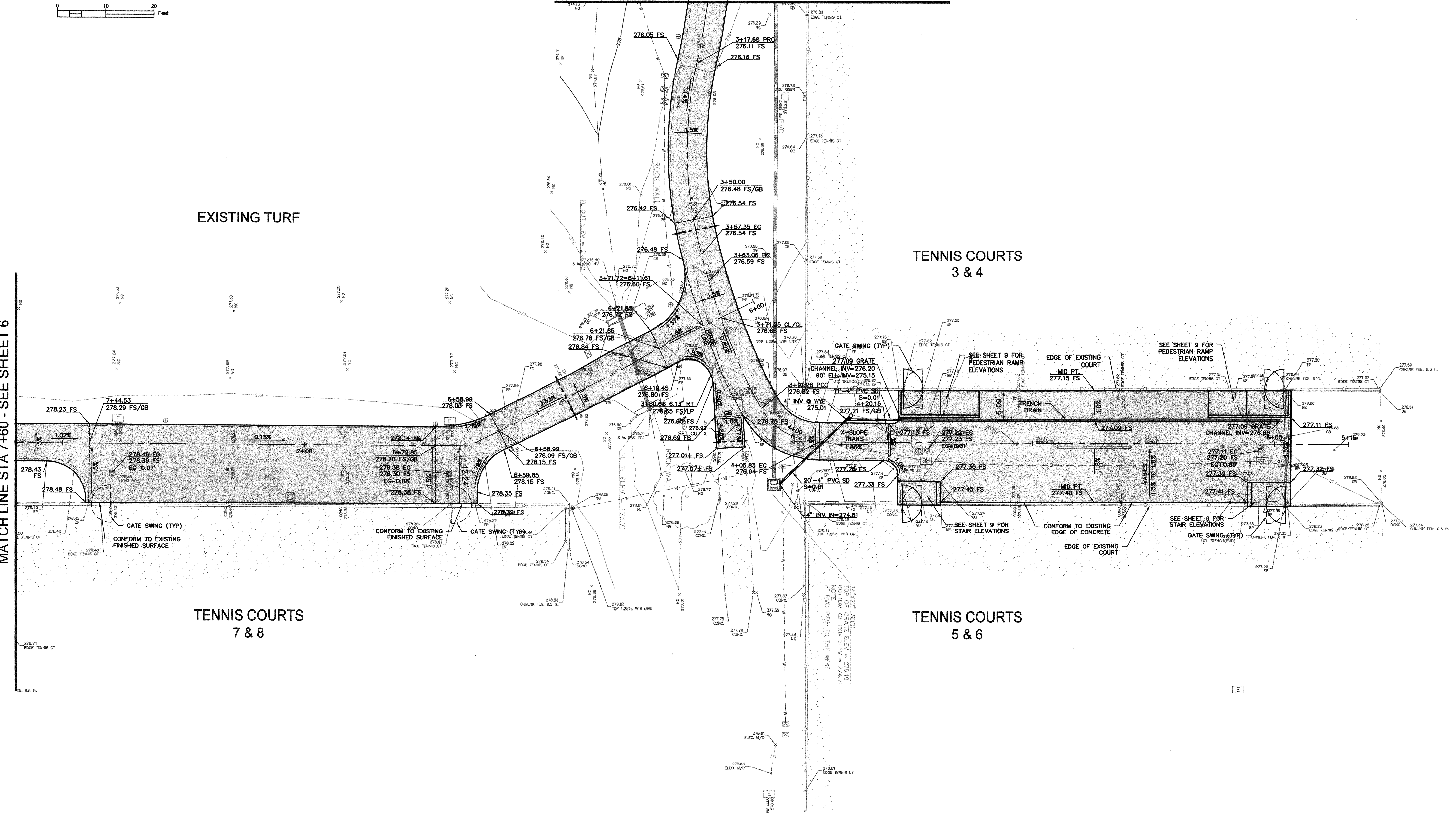
EXISTING TURF

TENNIS COURTS 3 & 4

TENNIS COURTS 7 & 8

TENNIS COURTS 5 & 6

MATCH LINE STA 7+60 - SEE SHEET 6



Coastland Civil Engineering, Inc.
1400 Neolomas Avenue, Santa Rosa, CA 95405
707.571.8005

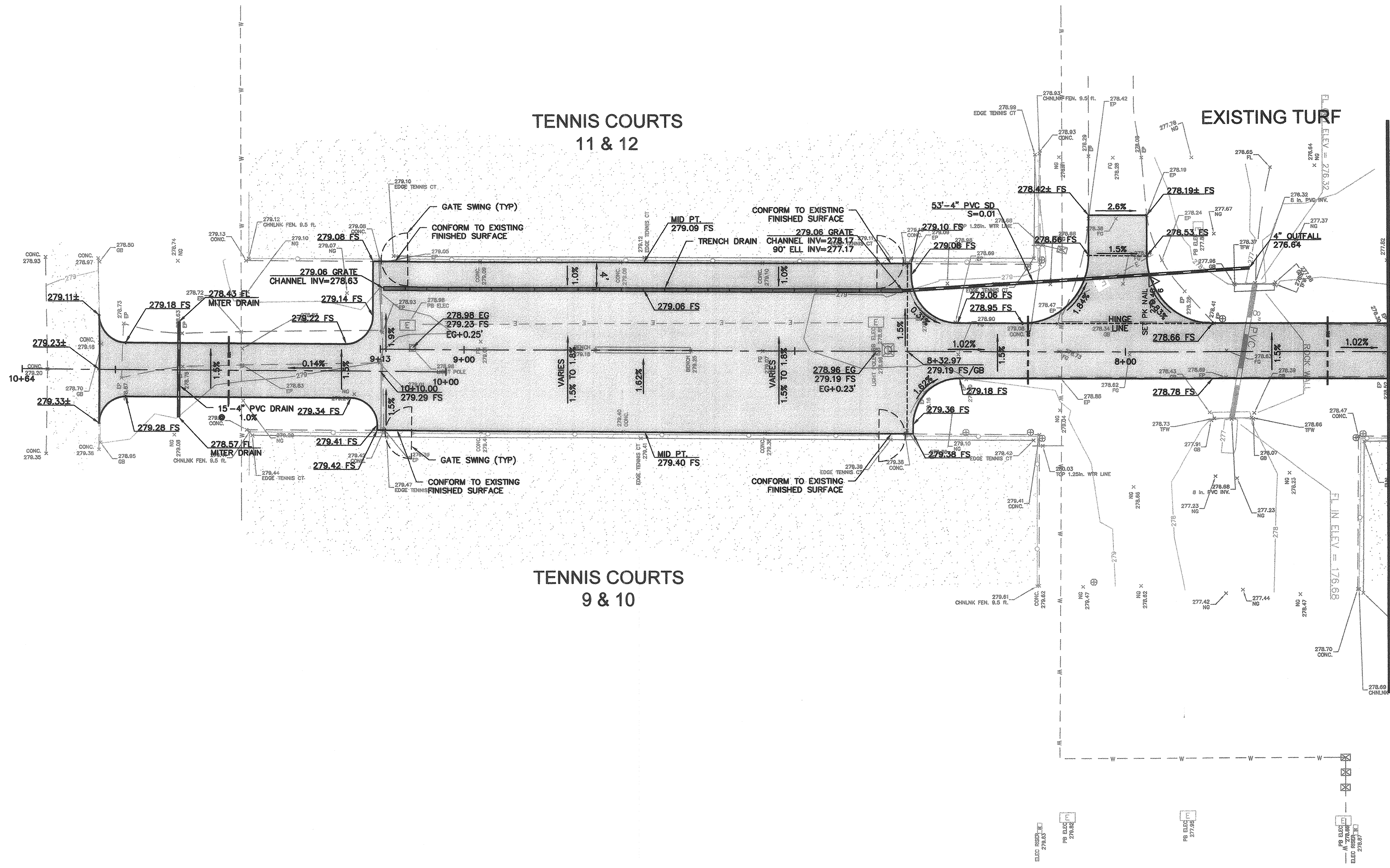
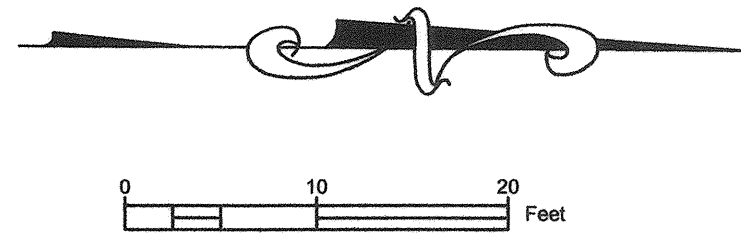
NO.	DATE	REVISION	BY

SCALE: 1"=10'
 DWN BY: JWM
 DATE: MAY 2018
 CHK BY: MNC
 APPROVED: Deputy Director - Engineering
 By: *Lori Urbanek* Date: 5/1/18
 Lori Urbanek

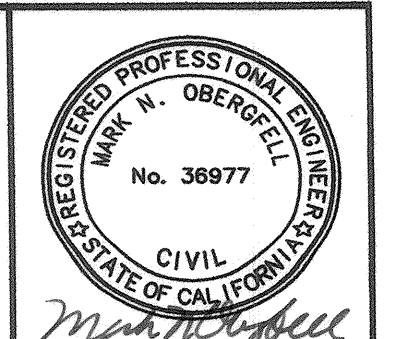
CITY OF SANTA ROSA
 ACCESSIBILITY ALTERATIONS AT
 GALVIN PARK
 FINISHED GRADING PLAN

CONTRACT NO.
 C02145
 SHEET 5 OF 9
 FILE NO. 2018-0015

Images: X:\12726-TP.dwg; 12726-TP.dwg; 12726-TP.dwg
 Path: F:\Civil_3D_projects\12726\12726-TP.dwg
 Layout Name: 5 Plot Date: Apr 20, 2018 at 11:20



MATCH LINE STA 7+60 - SEE SHEET 5

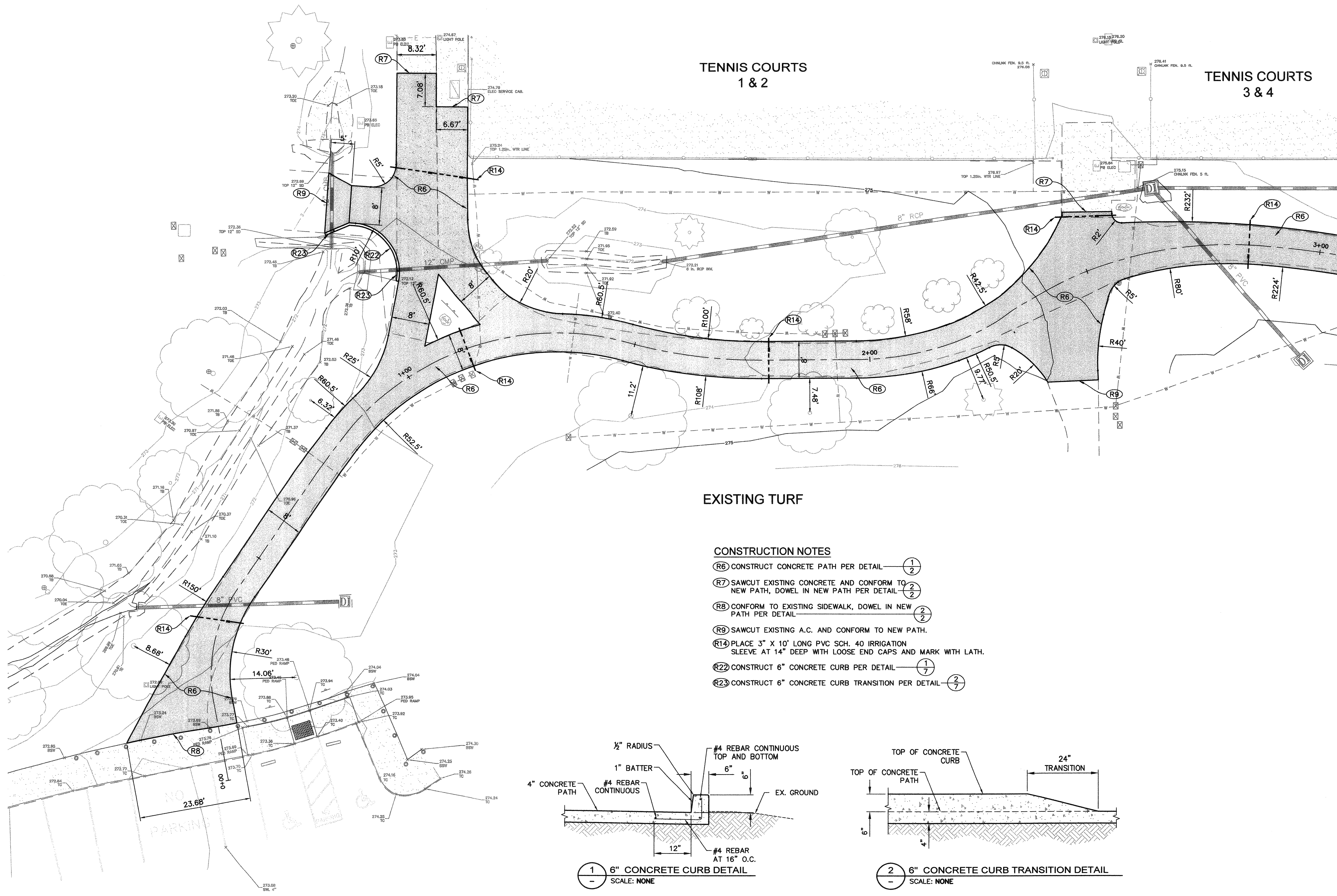
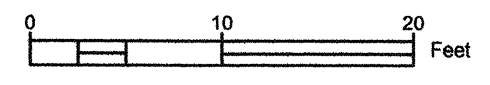


Coastland Civil Engineering, Inc.
 1400 Neotomas Avenue, Santa Rosa, CA 95405
 707.571.8037 Fax
 707.571.8005

NO.	DATE	REVISION	BY

SCALE: 1"=10'
 DWN BY: JMM
 DATE: MAY 2018
 CHK BY: MNO
 APPROVED: Deputy Director - Engineering
 By: *Lori Urbaneck* Date: 5/1/18
 Lori Urbaneck

CITY OF SANTA ROSA
 ACCESSIBILITY ALTERATIONS AT
 GALVIN PARK
FINISHED GRADING PLAN
 CONTRACT NO. C02145
 SHEET 6 OF 9
 FILE NO. 2018-0015



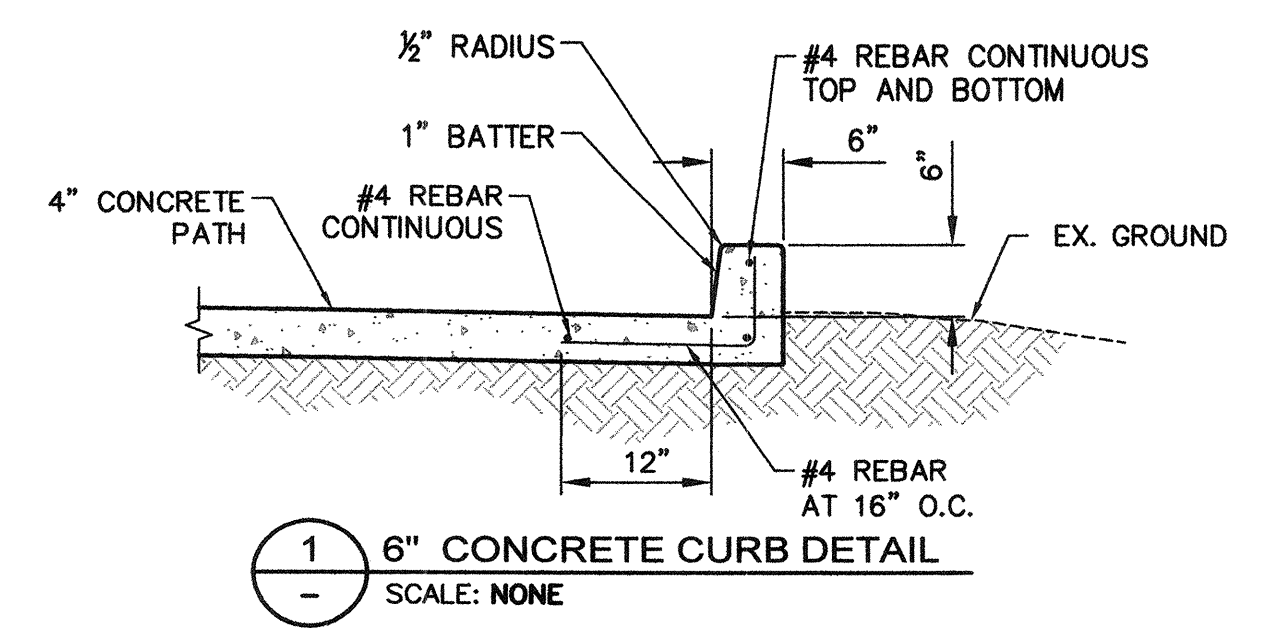
TENNIS COURTS
1 & 2

TENNIS COURTS
3 & 4

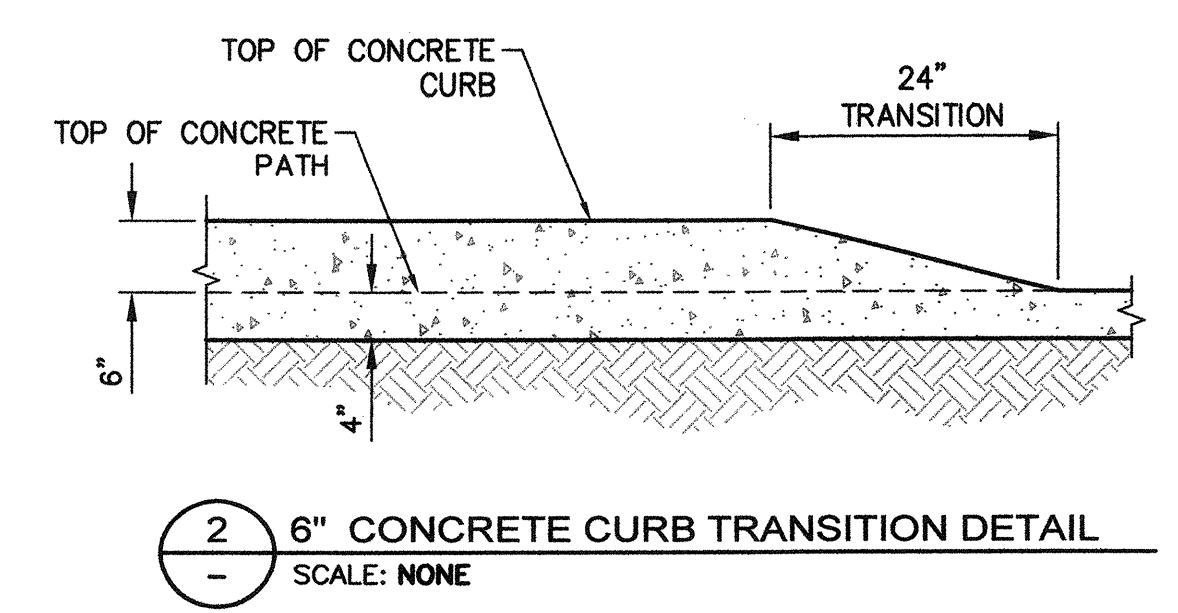
EXISTING TURF

CONSTRUCTION NOTES

- (R6) CONSTRUCT CONCRETE PATH PER DETAIL (1/2)
- (R7) SAWCUT EXISTING CONCRETE AND CONFORM TO NEW PATH, DOWEL IN NEW PATH PER DETAIL (2/2)
- (R8) CONFORM TO EXISTING SIDEWALK, DOWEL IN NEW PATH PER DETAIL (2/2)
- (R9) SAWCUT EXISTING A.C. AND CONFORM TO NEW PATH.
- (R14) PLACE 3" X 10' LONG PVC SCH. 40 IRRIGATION SLEEVE AT 14" DEEP WITH LOOSE END CAPS AND MARK WITH LATH.
- (R22) CONSTRUCT 6" CONCRETE CURB PER DETAIL (1/7)
- (R23) CONSTRUCT 6" CONCRETE CURB TRANSITION PER DETAIL (2/7)

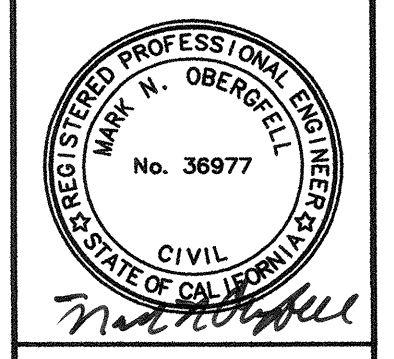


1 6" CONCRETE CURB DETAIL
SCALE: NONE



2 6" CONCRETE CURB TRANSITION DETAIL
SCALE: NONE

MATCH LINE STA 3+05 - SEE SHEET 8



Coastland Civil Engineering, Inc.
1400 Neotomas Avenue, Santa Rosa, CA 95405
707.571.8005

NO.	DATE	REVISION	BY

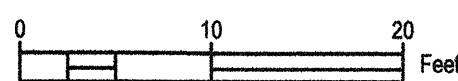
SCALE: 1"=10'
DWN BY: JMM
DATE: MAY 2018
CHK BY: MNO
APPROVED: Deputy Director - Engineering
By: *Lori Urbaneck* Date: 5/11/18
Lori Urbaneck

CITY OF SANTA ROSA
ACCESSIBILITY ALTERATIONS AT
GALVIN PARK
SITE AND DIMENSION PLAN

CONTRACT NO. C02145
SHEET 7 OF 9
FILE NO. 2018-0015

Images: Xrefs: 123726-SF.dwg\123726-TD.dwg
Path: F:\V\18_3D Projects\123726.dwg\123726-DIM.dwg
Plot Date: Apr 20, 2018 at 1:20

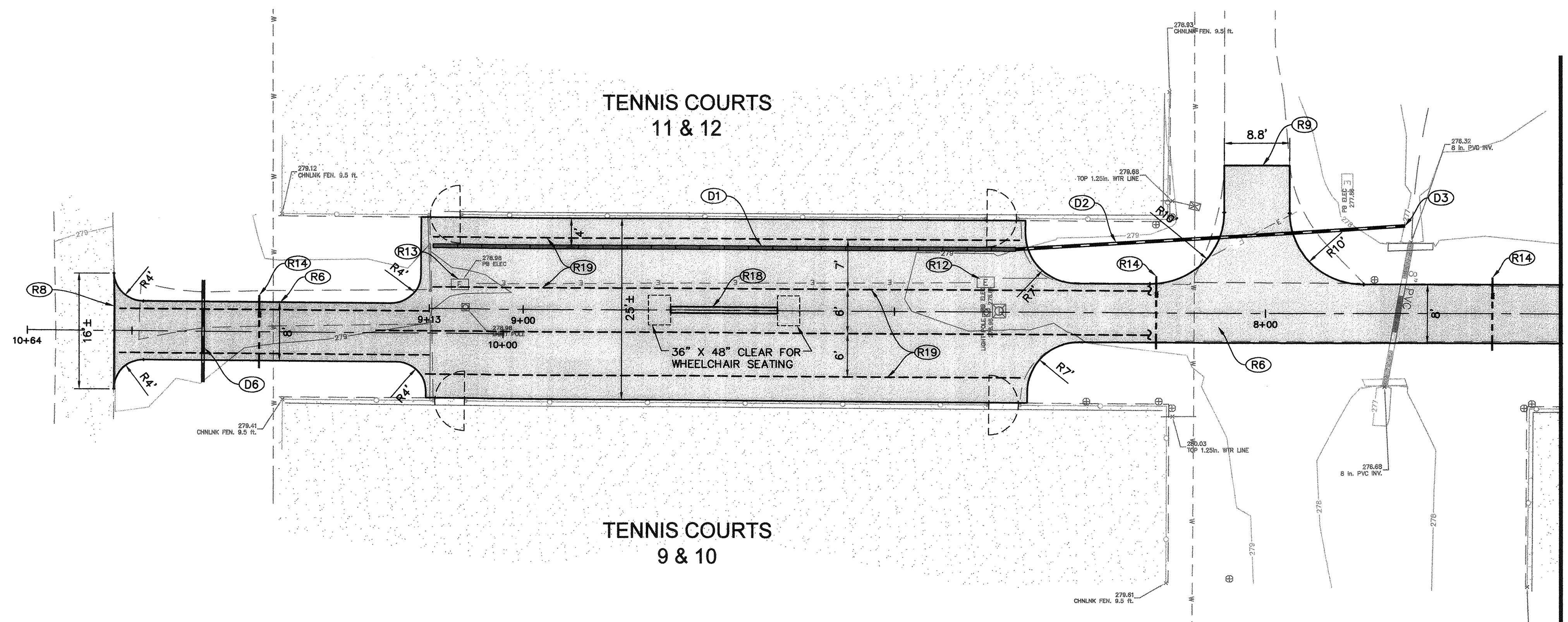
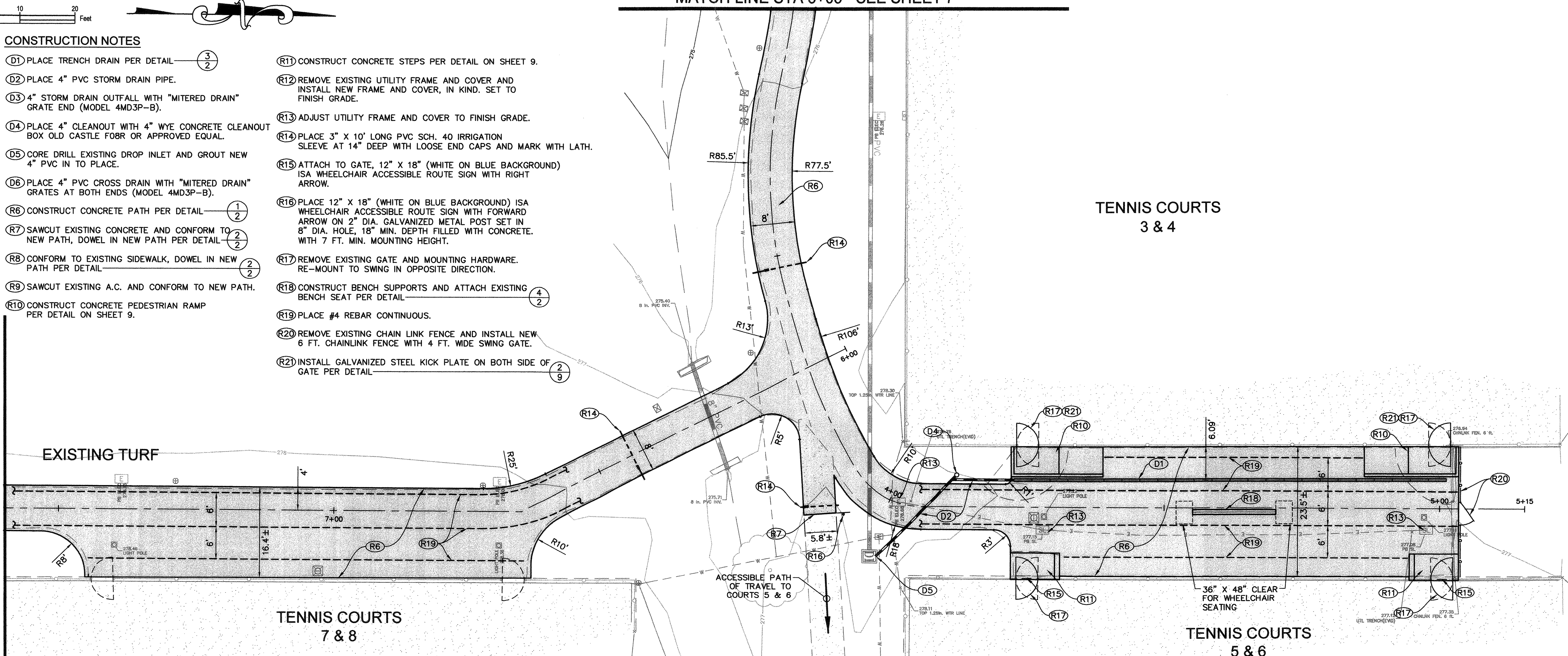
MATCH LINE STA 3+05 - SEE SHEET 7



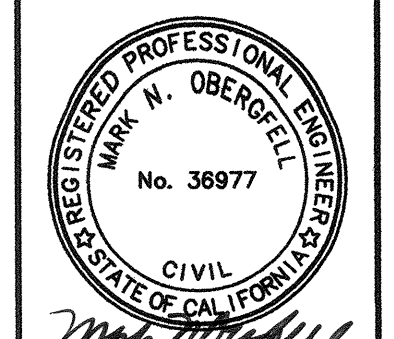
CONSTRUCTION NOTES

- (D1) PLACE TRENCH DRAIN PER DETAIL (3/2)
- (D2) PLACE 4" PVC STORM DRAIN PIPE.
- (D3) 4" STORM DRAIN OUTFALL WITH "MITERED DRAIN" GRATE END (MODEL 4MD3P-B).
- (D4) PLACE 4" CLEANOUT WITH 4" WYE CONCRETE CLEANOUT BOX OLD CASTLE F08R OR APPROVED EQUAL.
- (D5) CORE DRILL EXISTING DROP INLET AND GROUT NEW 4" PVC IN TO PLACE.
- (D6) PLACE 4" PVC CROSS DRAIN WITH "MITERED DRAIN" GRATES AT BOTH ENDS (MODEL 4MD3P-B).
- (R6) CONSTRUCT CONCRETE PATH PER DETAIL (1/2)
- (R7) SAWCUT EXISTING CONCRETE AND CONFORM TO NEW PATH, DOWEL IN NEW PATH PER DETAIL (2/2)
- (R8) CONFORM TO EXISTING SIDEWALK, DOWEL IN NEW PATH PER DETAIL (2/2)
- (R9) SAWCUT EXISTING A.C. AND CONFORM TO NEW PATH.
- (R10) CONSTRUCT CONCRETE PEDESTRIAN RAMP PER DETAIL ON SHEET 9.
- (R11) CONSTRUCT CONCRETE STEPS PER DETAIL ON SHEET 9.
- (R12) REMOVE EXISTING UTILITY FRAME AND COVER AND INSTALL NEW FRAME AND COVER, IN KIND. SET TO FINISH GRADE.
- (R13) ADJUST UTILITY FRAME AND COVER TO FINISH GRADE.
- (R14) PLACE 3" X 10" LONG PVC SCH. 40 IRRIGATION SLEEVE AT 14" DEEP WITH LOOSE END CAPS AND MARK WITH LATH.
- (R15) ATTACH TO GATE, 12" X 18" (WHITE ON BLUE BACKGROUND) ISA WHEELCHAIR ACCESSIBLE ROUTE SIGN WITH RIGHT ARROW.
- (R16) PLACE 12" X 18" (WHITE ON BLUE BACKGROUND) ISA WHEELCHAIR ACCESSIBLE ROUTE SIGN WITH FORWARD ARROW ON 2" DIA. GALVANIZED METAL POST SET IN 8" DIA. HOLE, 18" MIN. DEPTH FILLED WITH CONCRETE. WITH 7 FT. MIN. MOUNTING HEIGHT.
- (R17) REMOVE EXISTING GATE AND MOUNTING HARDWARE. RE-MOUNT TO SWING IN OPPOSITE DIRECTION.
- (R18) CONSTRUCT BENCH SUPPORTS AND ATTACH EXISTING BENCH SEAT PER DETAIL (4/2)
- (R19) PLACE #4 REBAR CONTINUOUS.
- (R20) REMOVE EXISTING CHAIN LINK FENCE AND INSTALL NEW 6 FT. CHAINLINK FENCE WITH 4 FT. WIDE SWING GATE.
- (R21) INSTALL GALVANIZED STEEL KICK PLATE ON BOTH SIDE OF GATE PER DETAIL (2/9)

MATCH LINE STA 7+60 - SEE BELOW RIGHT



MATCH LINE STA 7+60 - SEE ABOVE LEFT



Coastland Civil Engineering, Inc.
 1400 Neotomas Avenue, Santa Rosa, CA 95405
 707.571.8005

NO.	DATE	REVISION	BY

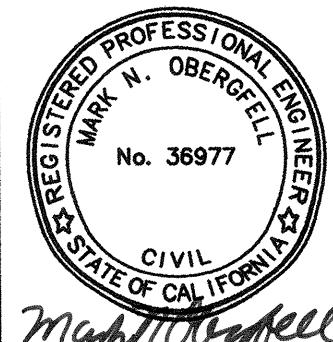
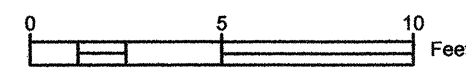
SCALE: 1"=10'
 DWN BY: JWM
 DATE: MAY 2018
 CHK BY: MNO
 APPROVED: Deputy Director - Engineering
 By: *Lori Urbaneck* Date: 5/1/18
 Lori Urbaneck

CITY OF SANTA ROSA
 ACCESSIBILITY ALTERATIONS AT
 GALVIN PARK

SITE AND DIMENSION PLAN

CONTRACT NO. C02145
 SHEET 8 OF 9
 FILE NO. 2018-0015

Images: Xrefs: 123728-SP.dwg; 123728-TP.dwg
 Paths: F:\Civil_3D\Projects\123728\123728-01.dwg
 Layout Name: 8 Plot Date: Apr 20, 2018 at 12:20



Coastland Civil Engineering, Inc.
1400 Neotomas Avenue, Santa Rosa, CA 95405
707.571.8037 Fax
707.571.8005

BY		DATE	MAY 2018
REVISION		CHK BY	MNO
NO.		DATE	
NO.		DATE	
NO.		DATE	
NO.		DATE	
NO.		DATE	
NO.		DATE	
NO.		DATE	
NO.		DATE	
NO.		DATE	
NO.		DATE	
NO.		DATE	

CITY OF SANTA ROSA
ACCESSIBILITY ALTERATIONS AT
GALVIN PARK

APPROVED: Deputy Director - Engineering
Don J. [Signature] Date 5/1/18

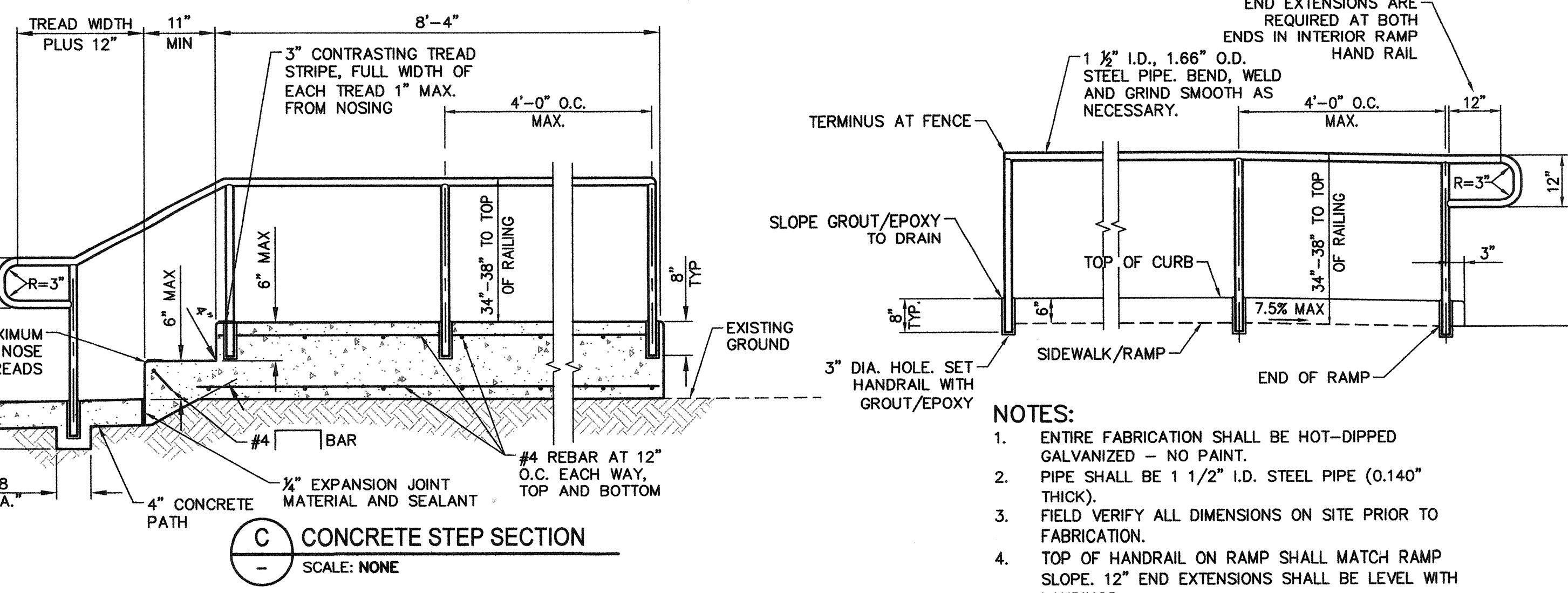
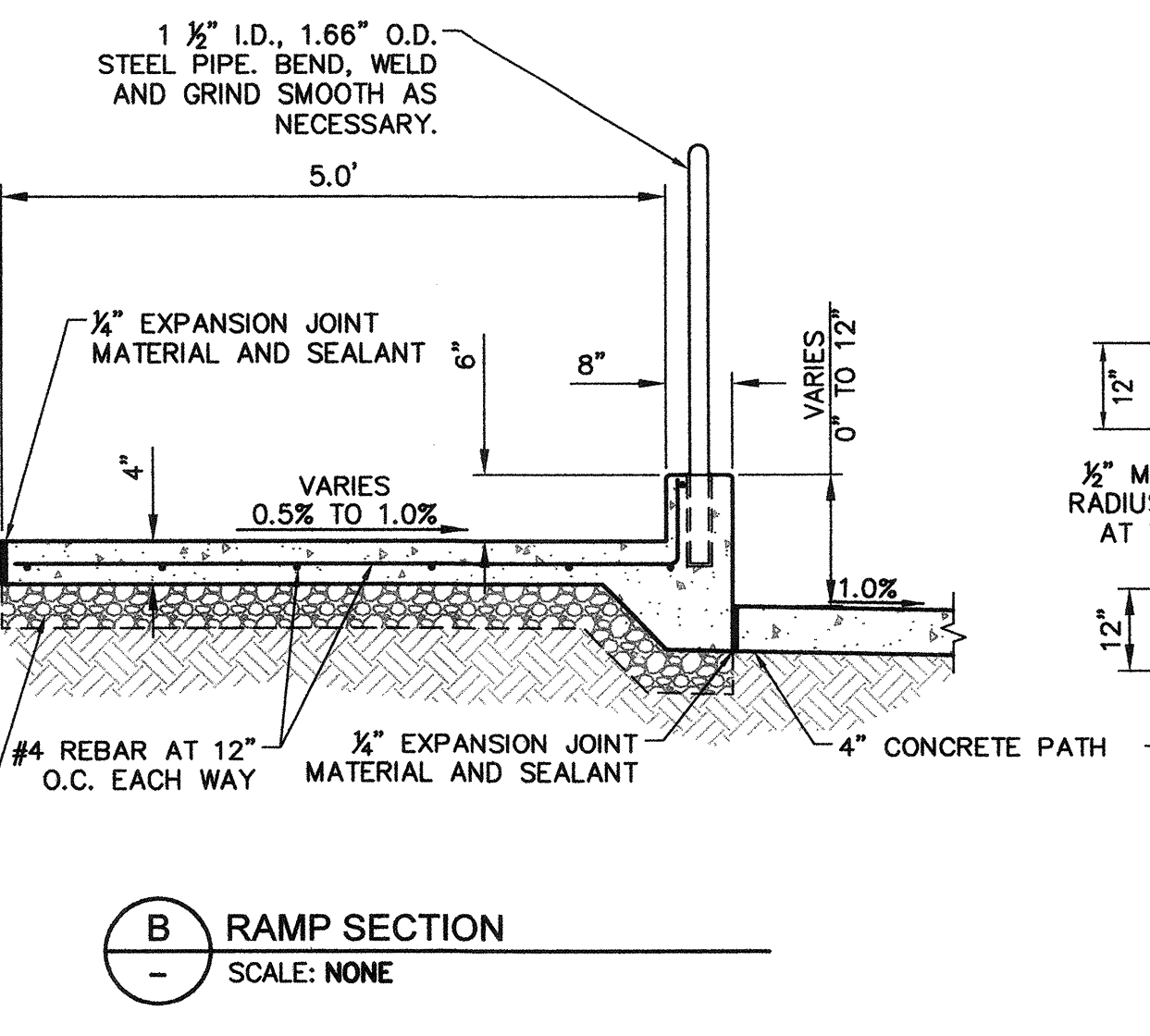
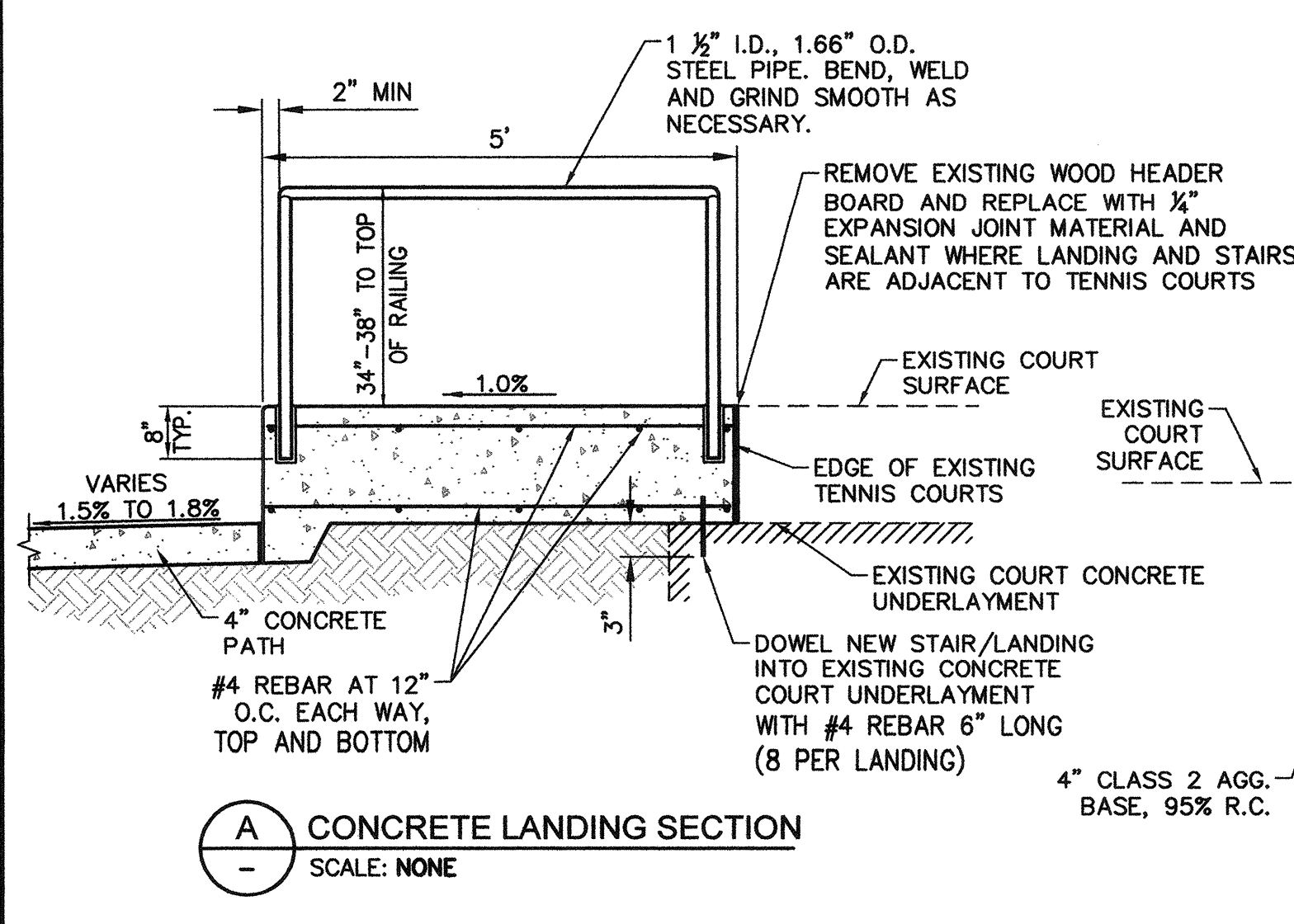
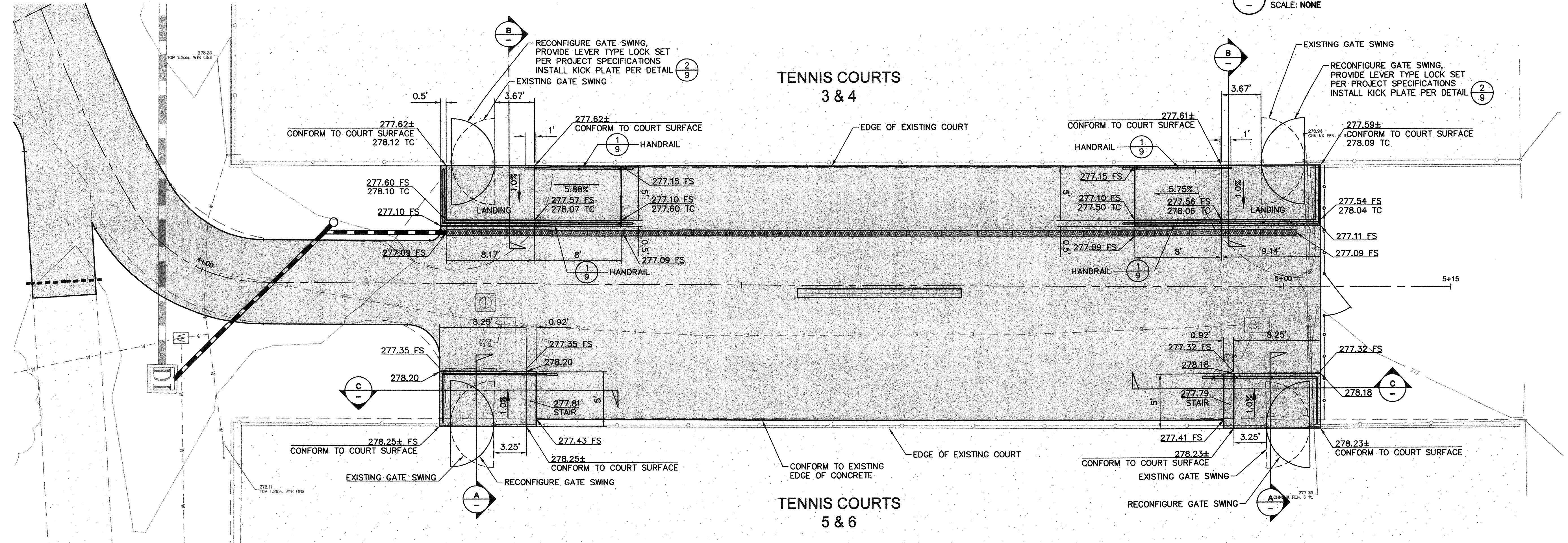
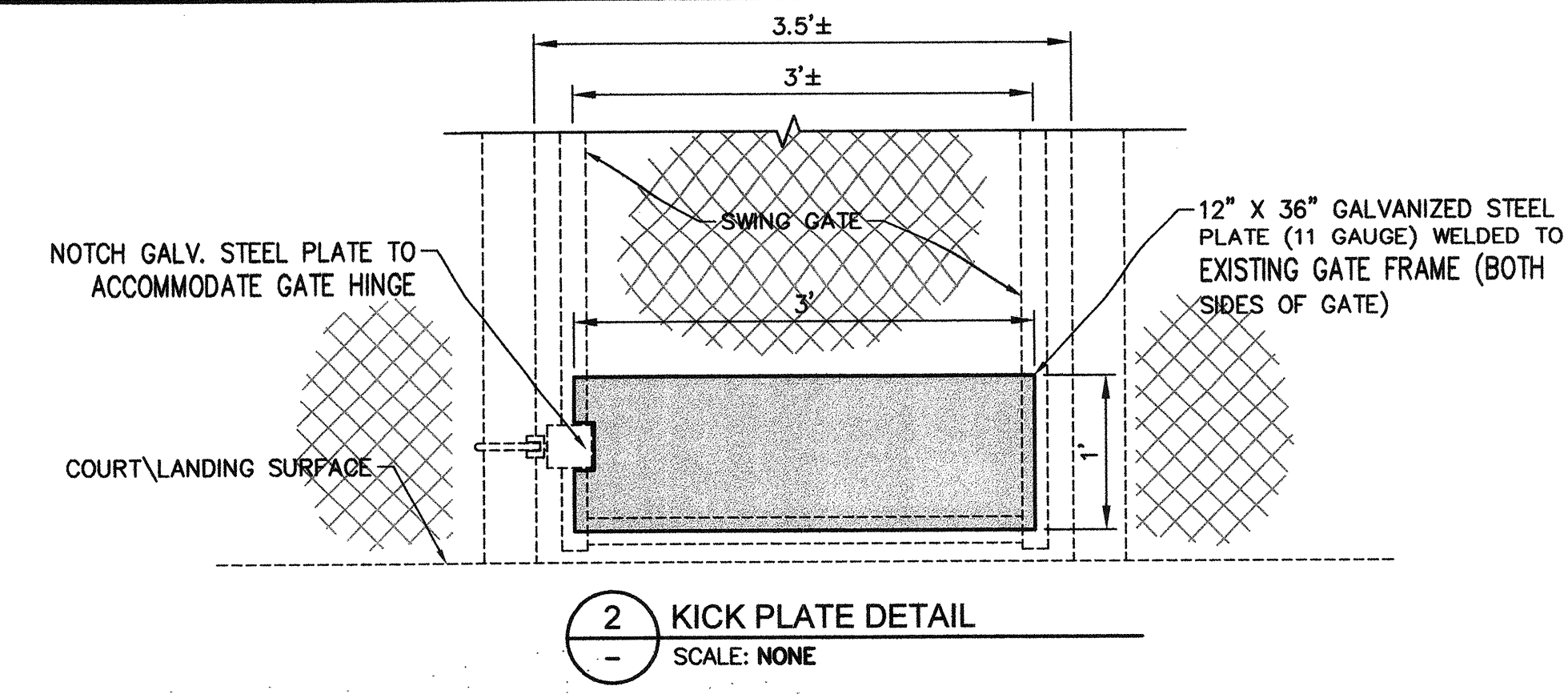
By Lori Urbonak

**PEDESTRIAN RAMP AND STEP
DETAILS**

CONTRACT NO.
C02145

SHEET 9 OF 9

FILE NO.2018-0015



- NOTES:**
- ENTIRE FABRICATION SHALL BE HOT-DIPPED GALVANIZED - NO PAINT.
 - PIPE SHALL BE 1 1/2" I.D. STEEL PIPE (0.140" THICK).
 - FIELD VERIFY ALL DIMENSIONS ON SITE PRIOR TO FABRICATION.
 - TOP OF HANDRAIL ON RAMP SHALL MATCH RAMP SLOPE. 12" END EXTENSIONS SHALL BE LEVEL WITH LANDINGS.
- 1 HAND RAIL DETAIL**
SCALE: NONE

Project: 137276-00-4-01 (137276-00-4-01) Date: Apr 20, 2018 at 13:20
 Path: F:\004_30\Program\137276-00\137276-00.dwg Layout Name: 9 Plot Date: Apr 20, 2018 at 13:20
 User: Lori Urbonak