

**RECORD PLAN DATA**

PROJECT START \_\_\_\_\_  
 PROJECT END \_\_\_\_\_  
 CONTRACTOR \_\_\_\_\_  
     Superintendent \_\_\_\_\_  
 UNDERGROUND CONTRACTOR \_\_\_\_\_  
     Superintendent \_\_\_\_\_  
 SEWER PIPE \_\_\_\_\_  
 WATER PIPE \_\_\_\_\_  
 WATER VALVES \_\_\_\_\_  
 FITTINGS, TEES, WYES \_\_\_\_\_  
 FIRE HYDRANTS \_\_\_\_\_  
 INSPECTOR \_\_\_\_\_  
 RECORD PLANS BY \_\_\_\_\_  
 OTHER \_\_\_\_\_

**CITY OF SANTA ROSA**

IMPROVEMENT PLANS FOR

**Pavement Preventive Maintenance  
2020**

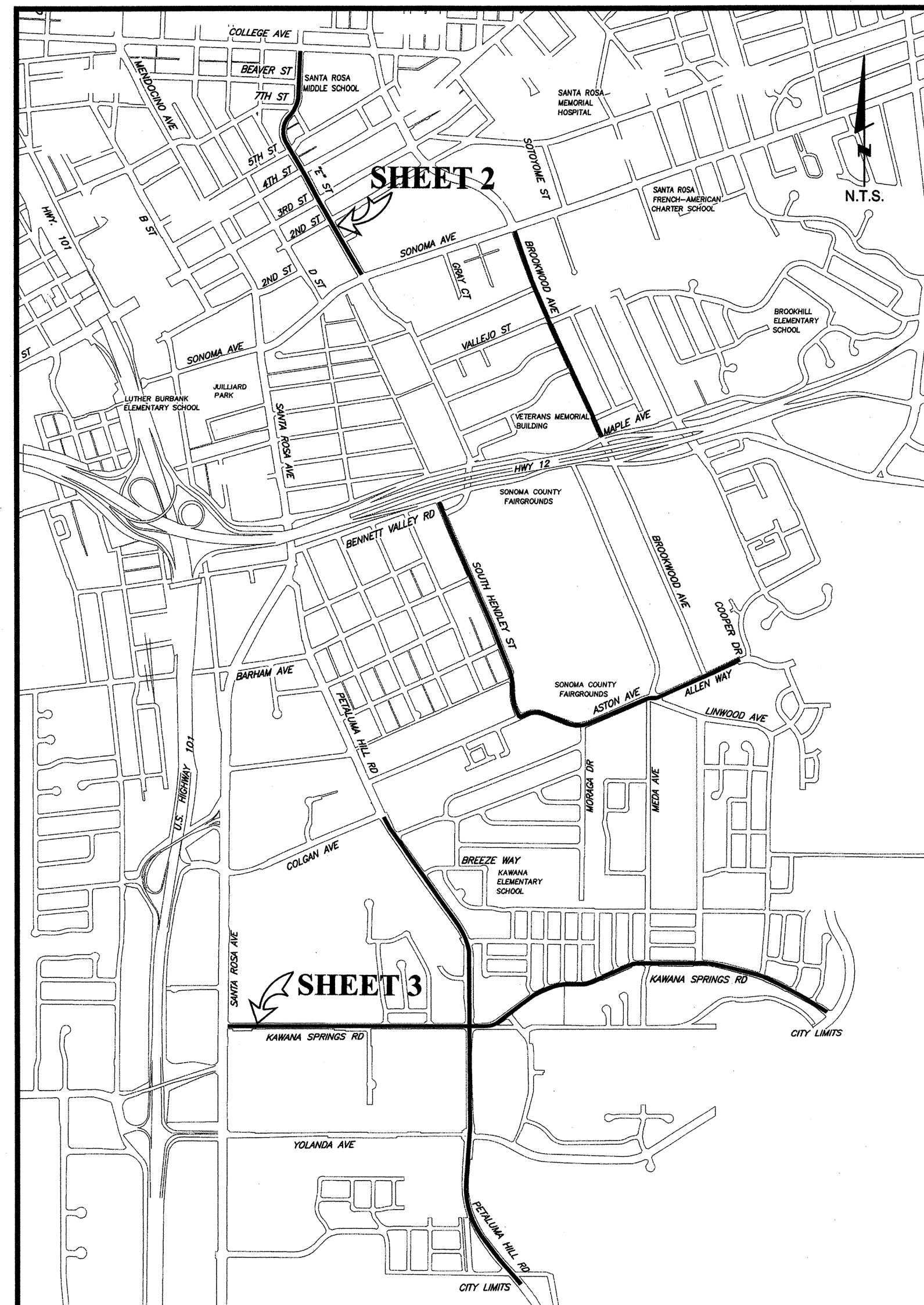
CONTRACT No. C02252



DATE	SIGNATURE	DEPARTMENT
12/11	<i>[Signature]</i>	Design/Construction
	N/A	Survey
	<i>[Signature]</i>	Field Services
	N/A	Utility Operations
		BY

**GENERAL NOTES:**

- ALL WORKMANSHIP, MATERIALS, AND CONSTRUCTION SHALL CONFORM TO THE CITY OF SANTA ROSA STANDARD PLANS, THE CONSTRUCTION SPECIFICATIONS FOR PUBLIC IMPROVEMENTS, THE SPECIAL PROVISIONS FOR THIS PROJECT, AND THE 2010 STATE STANDARD SPECIFICATIONS AND STANDARD PLANS.
- THE CONTRACTOR SHALL POSSESS THE CLASS(ES) OF LICENSE(S) AS SPECIFIED IN THE 'NOTICE TO CONTRACTORS' CONTAINED IN THE 'INVITATION FOR BIDS' FOR THIS PROJECT.
- NO CONSTRUCTION SHALL COMMENCE UNTIL RECEIPT OF A WRITTEN NOTICE TO PROCEED SIGNED BY THE CITY OF SANTA ROSA'S SUPERVISING ENGINEER.
- THE CONTRACTOR SHALL CALL UNDERGROUND SERVICE ALERT (U.S.A.) AT (800) 642-2444 AT LEAST 48 HOURS (2 WORKING DAYS) PRIOR TO ANY EXCAVATION, FOR MARKOUTS OF EXISTING UNDERGROUND FACILITIES.
- ALL TRAFFIC CONTROL & PEDESTRIAN TRAFFIC CONTROL SHALL BE IN ACCORDANCE WITH THE CALIFORNIA MANUAL ON UNIFORM TRAFFIC CONTROL DEVICES (CAMUTCD). ALL SIGNS SHALL BE APPROPRIATELY CONSTRUCTED WITH REFLECTIVE MATERIAL ON A BACKING OF METAL, FABRIC OR OTHER DURABLE WEATHER RESISTANT MATERIAL (NO WOOD ALLOWED). SIGNS SHALL BE MAINTAINED THROUGHOUT CONSTRUCTION TO PROVIDE PROPER VISIBILITY PER SECTION 12 OF THE SPECIAL PROVISIONS. SIGNS SHALL BE COVERED OR REMOVED WHEN NOT REQUIRED.
- THE LOCATIONS OF PG&E, SBC, AT&T, COMCAST TV UTILITIES SHOWN ON THE PLANS ARE BASED ON THE BEST AVAILABLE INFORMATION. THE CITY ONLY ASSUMES RESPONSIBILITY FOR THE ACCURACY OF THE LOCATIONS OF ITS OWN UNDERGROUND UTILITIES.
- THE CONTRACTOR SHALL BE RESPONSIBLE FOR ANY DAMAGES TO CITY OR OTHER UTILITIES CAUSED BY CONTRACTOR OPERATIONS PER SECTION 5-1.01 OF THE STANDARD SPECIFICATIONS.
- WHERE EXCAVATION OCCURS WITHIN THE DRIP LINE OF STREET TREES THE CONTRACTOR SHALL HAND DIG TO PROTECT ROOTS AS DIRECTED BY THE ENGINEER. TREE ROOTS SHALL NOT BE PULLED BY EXCAVATING EQUIPMENT. ROOT PRUNING SHALL BE DONE ONLY WHEN DIRECTED BY THE ENGINEER.
- EXISTING SHRUBBERY AND TREES SHALL BE REMOVED ONLY AT THE LOCATIONS SHOWN ON THE PLANS OR AS DIRECTED BY THE ENGINEER.
- ALL LANDSCAPING AND IRRIGATION SYSTEMS DISTURBED BY THE CONTRACTOR SHALL BE REPAIRED OR REPLACED IN KIND, AS DIRECTED BY THE ENGINEER, AND PER SECTION 5-3.03 OF THE SPECIAL PROVISIONS.
- THE CONTRACTOR SHALL BE RESPONSIBLE FOR OFF-SITE DISPOSAL OF ALL BITUMINOUS PAVEMENT, CONCRETE AND REINFORCEMENT, AND SPOILS, AS REQUIRED BY THE ENGINEER, AND PER SPECIAL PROVISIONS SECTIONS 124, MATERIAL RECYCLING.
- PEDESTRIAN ACCESS SHALL BE MAINTAINED DURING CONSTRUCTION AND ALL WALKWAYS SHALL BE SAFE AND USABLE AT THE END OF WORKDAY OR AS DIRECTED BY THE ENGINEER.



**VICINITY MAP**

STREETS TO BE SLURRY SEALED

**INDEX OF SHEETS**

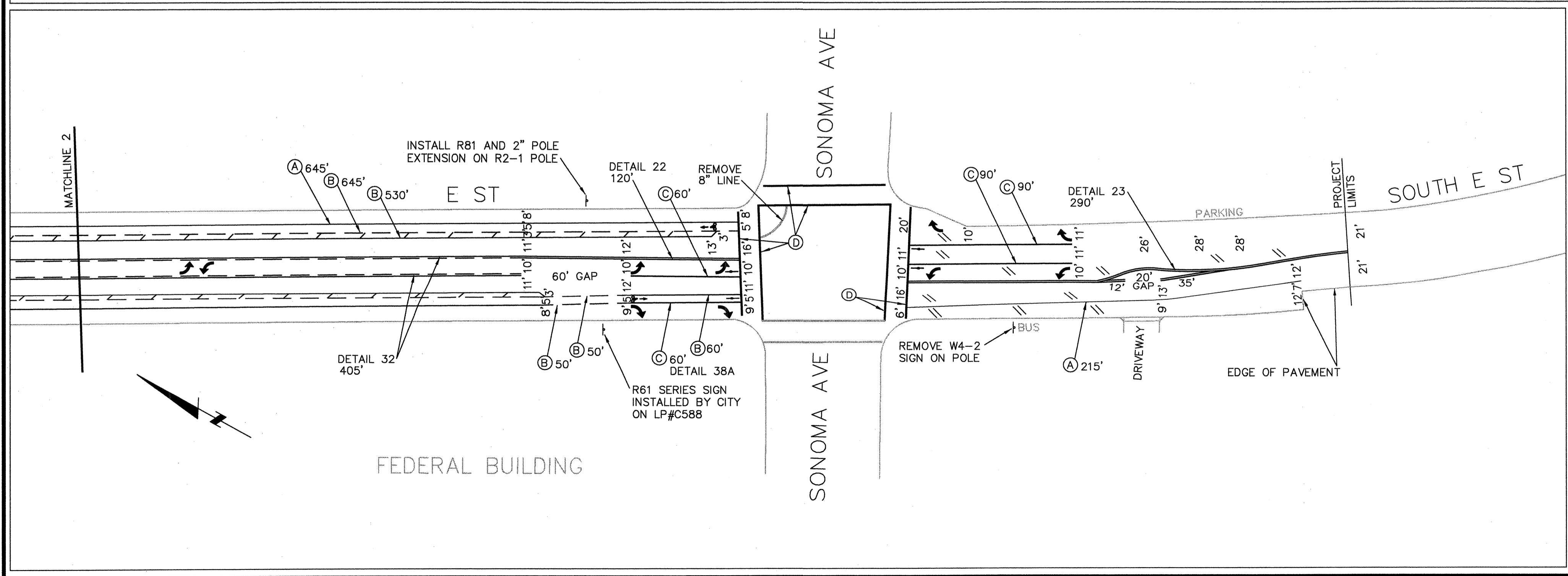
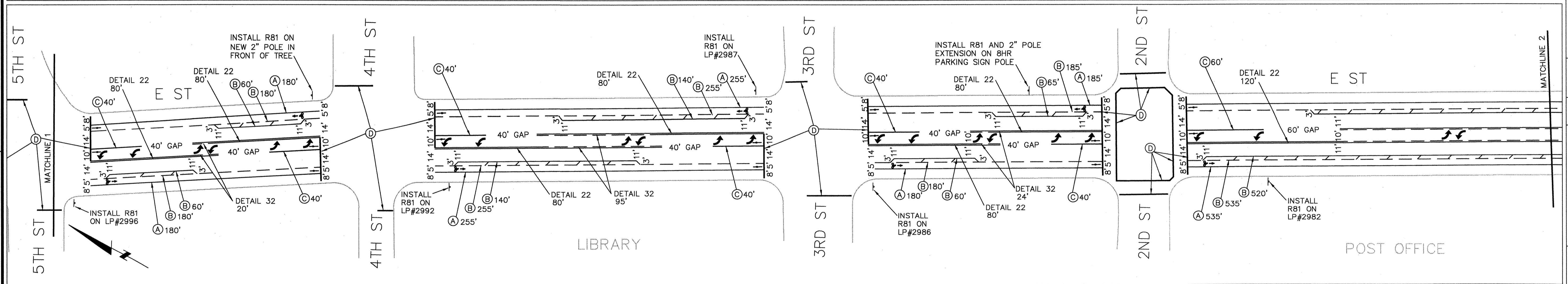
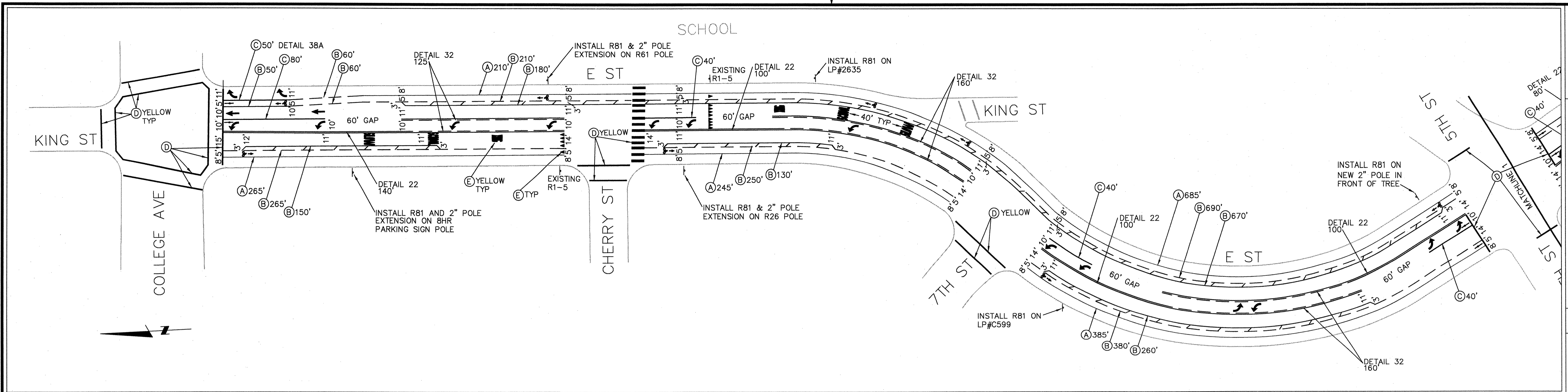
SHEET NO.

- COVER SHEET
- "E" STREET - CLASS II BIKE LANES
- KAWANA SPRINGS ROAD - CLASS II BIKE LANES

Scale: AS SHOWN	DATE: DEC 2019
DWN: KAR	CHK: MAV
APPROVED: Deputy Director - Engineering	Date: 12/15/19
By: <i>[Signature]</i>	DATE
CORI URBANEK	

City of Santa Rosa
PAVEMENT PREVENTIVE MAINTENANCE 2020
KAWANA SPRINGS ROAD CLASS II BIKE LANES

CONTRACT NO. C02252
SHEET 1 OF 3
FILE NO. 2019-0055



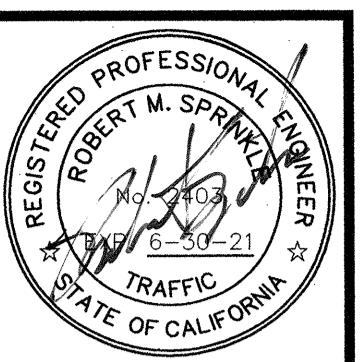
**LEGEND**

- = INSTALL THERMOPLASTIC TYPE I & TYPE IV ARROW PER C.S.P. A24A TYP.
- = INSTALL THERMOPLASTIC BIKE LOOP DETECTOR SYMBOL PER C.S.P. A24C TYP.
- = INSTALL THERMOPLASTIC BIKE LANE SYMBOL (LEFT) AND ARROW PER C.S.P. A24A, A24C TYP.
- = INSTALL DOUBLE YELLOW CENTERLINE PER C.S.P. A20A, DET. 22 TYP. (OR DET. 23 WHEN NOTED)
- = INSTALL 2-WAY LEFT TURN LANE PER C.S.P. A20B DETAIL 32 TYP.
- (A) = INSTALL 4" THERMOPLASTIC RIGHT EDGELINE PER 2010 C.S.P. A20B, DETAIL 27B TYP.
- (B) = INSTALL 6" THERMOPLASTIC BIKE LANE LINE PER C.S.P. A20D, DETAIL 39, 39A TYP.
- (C) = INSTALL 8" THERMOPLASTIC CHANNELIZING LINE PER C.S.P. A20D, DETAIL 38 TYP.
- (D) = INSTALL 12" THERMOPLASTIC CROSSWALK OR LIMIT LINE (WHITE UNLESS NOTED) PER C.S.P. A24E TYP.
- (E) = INSTALL THERMOPLASTIC PAVEMENT MARKING (WHITE UNLESS NOTED) PER C.S.P. A24C, A24D, A24E TYP.
- = INSTALL SIGN
- = REMOVE EXISTING PAVEMENT MARKINGS (OUTSIDE OF SLURRY LIMITS) & REPLACE PER PLAN

PATTERN STARTS FROM CROSSWALK OR CURB RETURN

BUFFER START      BUFFER END

BUFFER DETAIL NOT TO SCALE



City of Santa Rosa

NO.	DATE	REVISION	BY

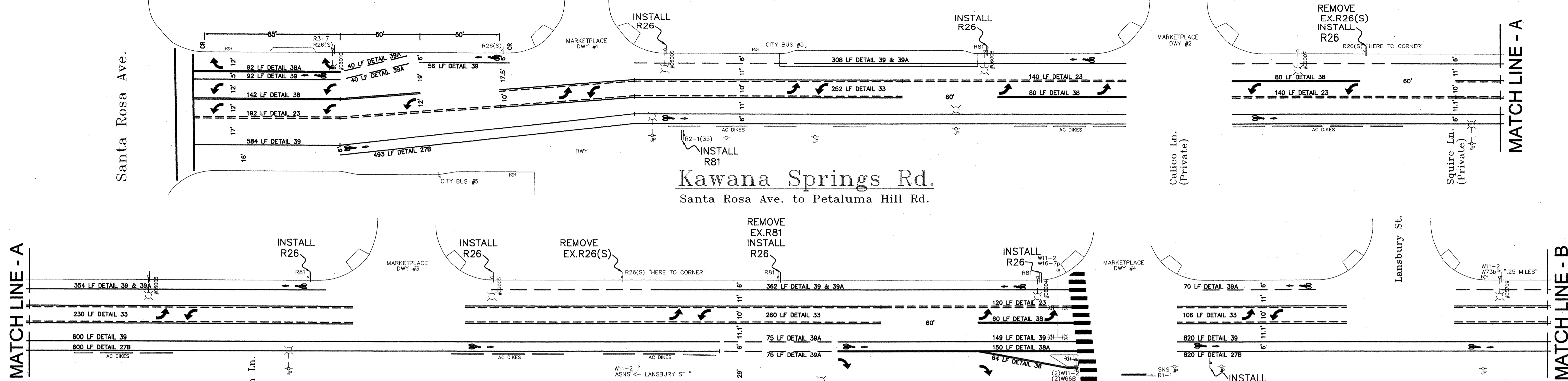
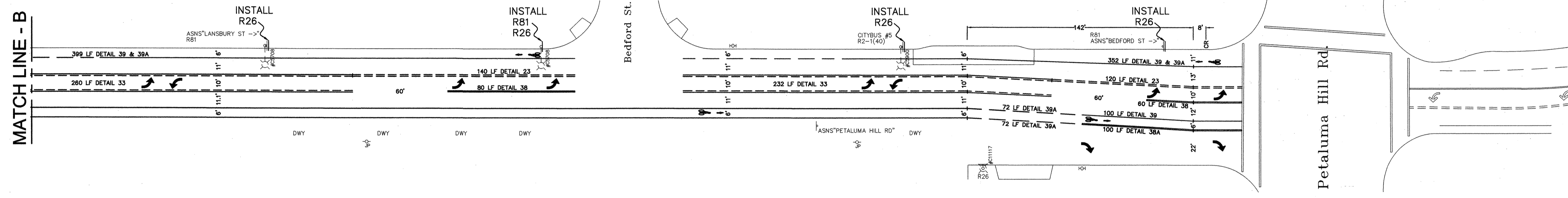
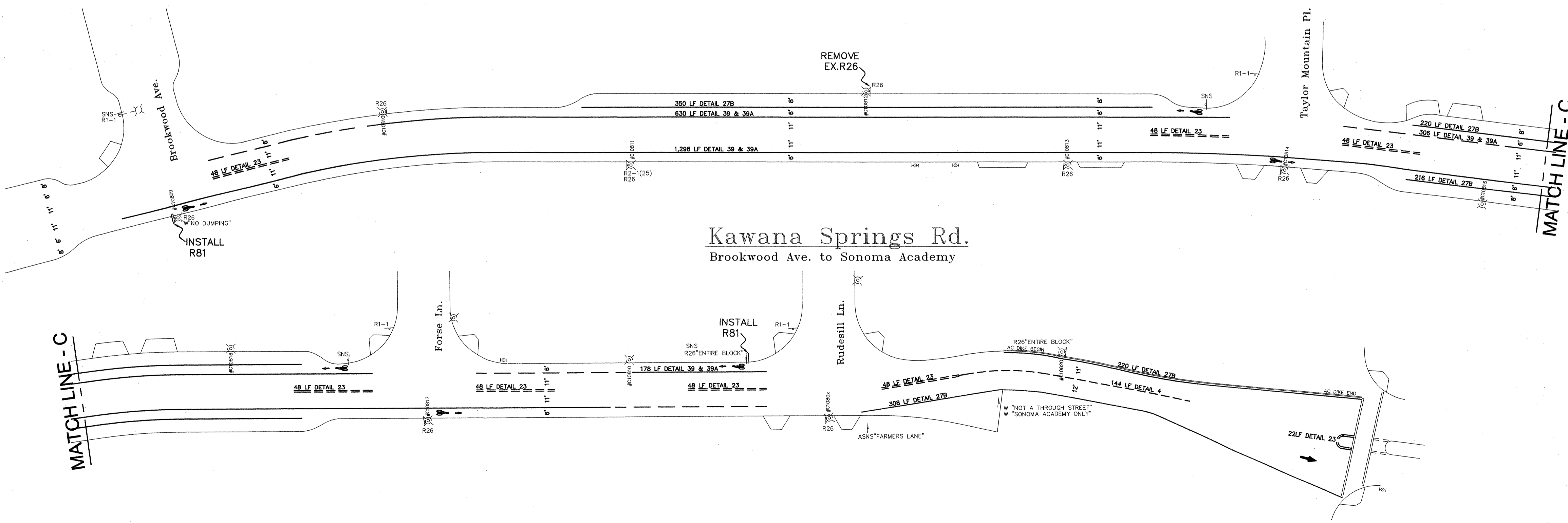
DATE: DEC 2019  
 CHK BY: RS  
 APPROVED: Deputy Director - Engineering  
 Lori Urbanek  
 Date: 12/15/19

SCALE: 1"=40'  
 DWN BY: SE

City of Santa Rosa  
**PAVEMENT PREVENTIVE MAINTENANCE**  
 2020  
**E STREET**  
 CLASS II BIKE LANES

CONTRACT NO. C02252  
 SHEET 2 OF 3  
 FILE NO. 2019-0055

12.00  
05-22-2019  
C:\Users\lking\Desktop\190426 Kawana Springs Road  
LKI



CONTRACT NO.  
C02252

SHEET 3 OF 3

FILE NO. 2019-0055

NO.	DATE	REVISION	BY

City of Santa Rosa  
PAVEMENT PREVENTIVE MAINTENANCE  
2020  
**KAWANA SPRINGS ROAD**  
CLASS II BIKE LANES

SCALE: 1"=40'

DWN BY: KAR

DATE: DEC. 2019

CHK BY: MAV

APPROVED: Deputy Director - Engineering  
*Lori Urianek*  
By: \_\_\_\_\_ Date: 12/5/19  
LORI URIANEK

