

LLANO INTERCEPTOR SEWER

*Office Copy
As Built.*

CONSTRUCTION NOTES

1. ALL MATERIALS, WORKMANSHIP AND CONSTRUCTION SHALL CONFORM TO THE CITY OF SANTA ROSA STANDARD PLANS AND CONSTRUCTION SPECIFICATIONS FOR PUBLIC IMPROVEMENTS AND SPECIAL PROVISIONS.
2. THE LOCATION OF EXISTING UTILITIES SHOWN ON THESE PLANS ARE BASED ON THE BEST INFORMATION AVAILABLE; HOWEVER THE CITY OF SANTA ROSA AND THE ENGINEER ASSUME NO RESPONSIBILITY FOR THE ACCURACY OF THE INFORMATION SHOWN OR THE INADVERTANT OMISSION OF ANY SUCH INFORMATION.
3. ALL DISTANCES SHOWN ARE TO AND AT THE CENTER OF MANHOLES, HORIZONTAL MEASUREMENT. ELEVATIONS SHOWN ARE AT THE CENTER OF MANHOLES.
4. THE CONTRACTOR SHALL SECURE A TRENCH PERMIT FROM THE CALIFORNIA DIVISION OF INDUSTRIAL SAFETY PRIOR TO EXCAVATION OF ANY TRENCH OVER FIVE FEET (5') IN DEPTH.
5. ALL TRENCHES (OR HOLE OPENINGS) SHALL BE PROTECTED AGAINST CAVE-INS EITHER BY SUITABLE SHORINGS, CAGES, OR PROPER SLOPING.
6. ALL WORK AND EQUIPMENT SHALL COMPLY WITH THE CALIFORNIA DIVISION OF INDUSTRIAL SAFETY REQUIREMENTS.
7. THE CONTRACTOR SHALL OBTAIN AN ENCROACHMENT PERMIT FROM THE SONOMA COUNTY ROAD DEPT. PRIOR TO EXCAVATION IN MEADOW LANE, LLANO ROAD, MERCED AVENUE, MILES AVENUE, OR OCCIDENTAL ROAD RIGHT OF WAY.
8. THE CONTRACTOR SHALL OBTAIN AN ENCROACHMENT PERMIT FROM THE STATE OF CALIFORNIA DEPT. OF TRANSPORTATION PRIOR TO EXCAVATION OR JACKING WITHIN THE STATE HIGHWAY RIGHT OF WAY.
9. THE CONTRACTOR SHALL OBTAIN AN ENCROACHMENT PERMIT FROM THE SONOMA COUNTY WATER AGENCY PRIOR TO ANY EXCAVATION IN THE WATER AGENCY RIGHT OF WAY.
10. THE CONTRACTOR SHALL OBTAIN A RIGHT OF ENTRY AND APPROPRIATE INSURANCE FOR WORKING WITHIN AND UNDER THE NORTHWESTERN PACIFIC RAILROAD COMPANY RIGHT OF WAY.
11. THE CONTRACTOR SHALL BE FULLY RESPONSIBLE FOR DAMAGE WITHIN THE RIGHT OF WAY AND THE TEMPORARY CONSTRUCTION EASEMENT AREA. NO TREES SHALL BE REMOVED OR DAMAGED EXCEPT AS NOTED ON THE PLANS OR APPROVED BY THE ENGINEER.



INDEX

1. COVER SHEET
2. SHEET LAYOUT
3. HORIZONTAL AND VERTICAL CONTROL SURVEY
4. DETOUR LOCATION MAP I
5. DETOUR LOCATION MAP II
6. DETOUR DETAIL SHEET I
7. DETOUR DETAIL SHEET II
8. MANHOLE DETAILS
9. MANHOLE DETAILS
10. DETAILS
11. FENCE DETAILS
12. BOARING LOCATION PLAN
13. THRU 19. LOG OF BOARING
20. TRENCH DETAILS
- L-1 THRU L-40 PLAN AND PROFILE
- F-1 THRU F-4 PLAN AND PROFILE
- T-1 THRU T-2 PLAN AND PROFILE
- S-1 THRU S-5 CONTROL STRUCTURES & METERING STATION.
- E-1 THRU E-4 ELECTRICAL PANEL & INSTRUMENTATION

*Llano Sewer
"As Built"*

APPLICABLE CITY OF SANTA ROSA STANDARDS

STANDARD NO.	TITLE	DATE APPROVE
1. 401	PIPE ENCASEMENT	FEB. 1967
2. 500	STANDARD PRECAST CONCRETE MANHOLE S.S.	JUN. 1974
3. 501	FITTING FOR DROP INLET MANHOLE	OCT. 1972
4. 507	ABANDONED PIPE PLUG DETAIL	DEC. 1967
5. 511	MANHOLE REDUCER SLAB	FEB. 1972
6. 514	STANDARD MANHOLE FRAME AND COVER	OCT. 1974
7. 803	CONCRETE ANCHOR BLOCKS FOR VERTICAL BENDS.	AUG. 1965
8. 805	CONCRETE THRUST BACKING	AUG. 1965

*John Bills - Inspector's Copy
7-31-75*

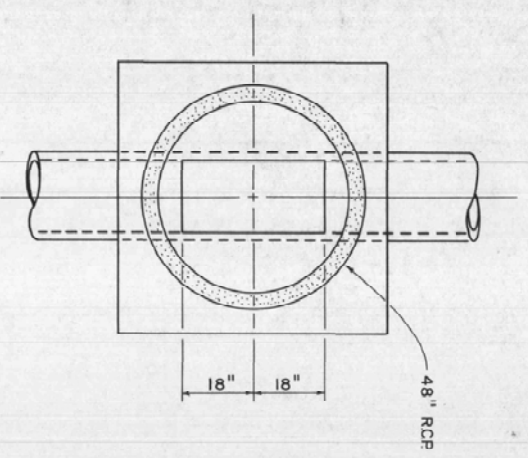


M. HUDIS AND ASSOCIATES
CONSULTING CIVIL ENGINEERS
2100 COUNTY CENTER DRIVE
SANTA ROSA, CALIFORNIA
TELEPHONE 542-8795

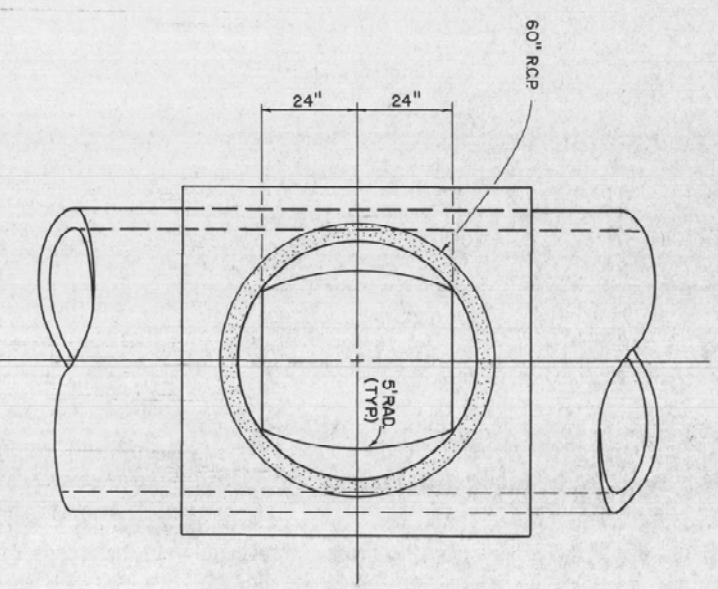
BROWN AND CALDWELL
CONSULTING ENGINEERS
SAN FRANCISCO - ALHAMBRA, CALIFORNIA

DEPARTMENTAL APPROVAL		CITY OF SANTA ROSA	
DEPARTMENT	DATE	DATE	SCALE 1" = 2000'
CONSTRUCTION		APPROVED: BROYDON J. RIHA, DIRECTOR OF PUBLIC WORK	
SURVEY		BY _____ DATE _____	
UTILITIES		DEPUTY DIRECTOR - ENGINEERING, CE 12561	
		OWN K.L.C. ENG. D.L.S. Sheet 1 of File Number	
		CHK _____	75 Sheets 75-02

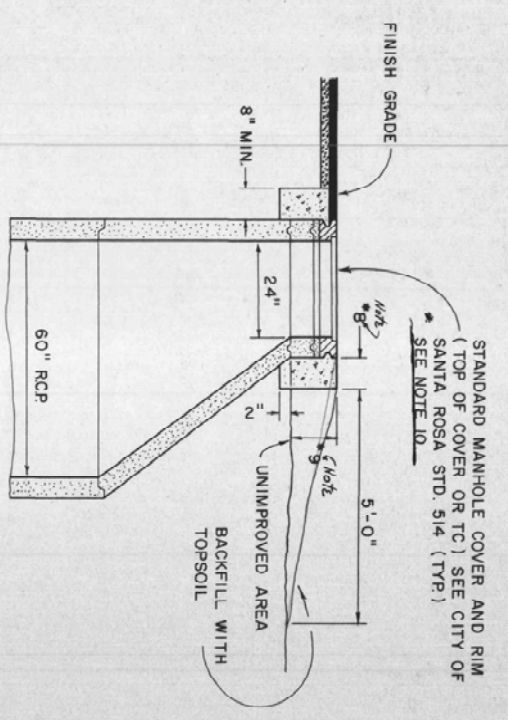
COVER SHEET



PLAN



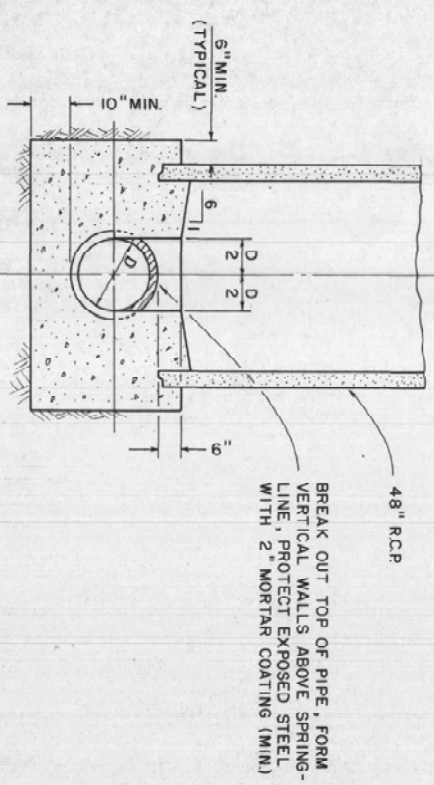
PLAN



60" MANHOLE REDUCER

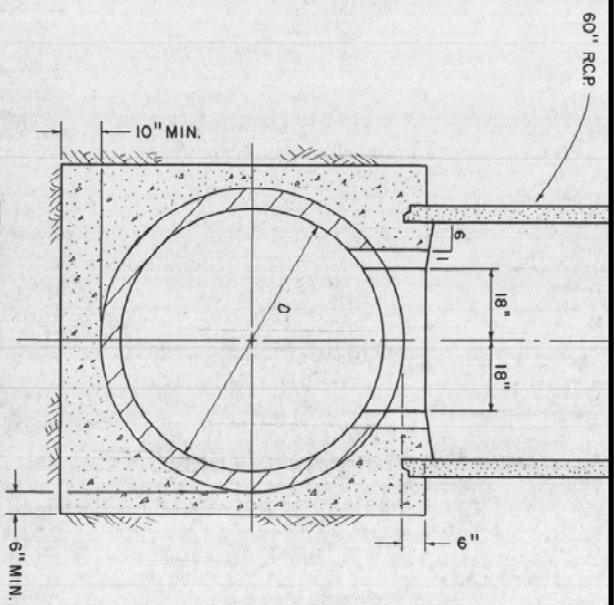
- MANHOLE CONSTRUCTION NOTES**
1. ECCENTRIC CONE TO BE USED IN CONJUNCTION WITH TYPE II MANHOLE, CONCENTRIC CONE TO BE USED WITH TYPE I MANHOLE.
 2. FOR DETAILS NOT SHOWN, REFER TO CITY STANDARDS DETAIL 500, STANDARD PRECAST CONCRETE MANHOLE; AND 514, STANDARD MANHOLE RIM AND COVER.
 3. NO LADDERS OR STEPS SHALL BE PLACED IN MANHOLE SECTIONS.
 4. CONTRACTOR MAY SUBSTITUTE PRECAST REDUCER SLAB, (4" THICK) AS PER CITY OF SANTA ROSA STD. 511, FOR CONE SHOWN.
 5. FOR BENDS UNDER 45° BEVEL CUT PIPE, FOR BENDS OVER 45° USE TYPE III MANHOLE.
 6. MANHOLES SHALL BE TYPE I OR II UNLESS NOTED AS TYPE III ON PLANS. FOR TYPE III MANHOLE DETAIL SEE SHEET 9.
 7. SET ALL BARREL SECTIONS, TAPER SECTIONS, REDUCER SLAB & GRADE ADJUSTMENT RINGS IN PLASTIC, RAM-NEK, POLYSEAL OR APPROVED EQUAL.
 8. 12" MINIMUM ON MANHOLE NUMBERS 2-8, 12, 13, 15, 16, 23 & 30.
 9. 18" MINIMUM ON MANHOLE NUMBERS 2-8, 12, 13, 15, 16, 23 & 30.
 - FRAME & COVER SHALL BE PINKERTON A 474, PHOENIX P1002 OR EQUAL ON MANHOLE NUMBERS 2-8, 12, 13, 15, 16, 23, 24, 30, 52 & 63.

NOTE: TYPE I MANHOLE APPLIES TO LLANO TRUNK AT WEST 3RD STREET I12717MH59.

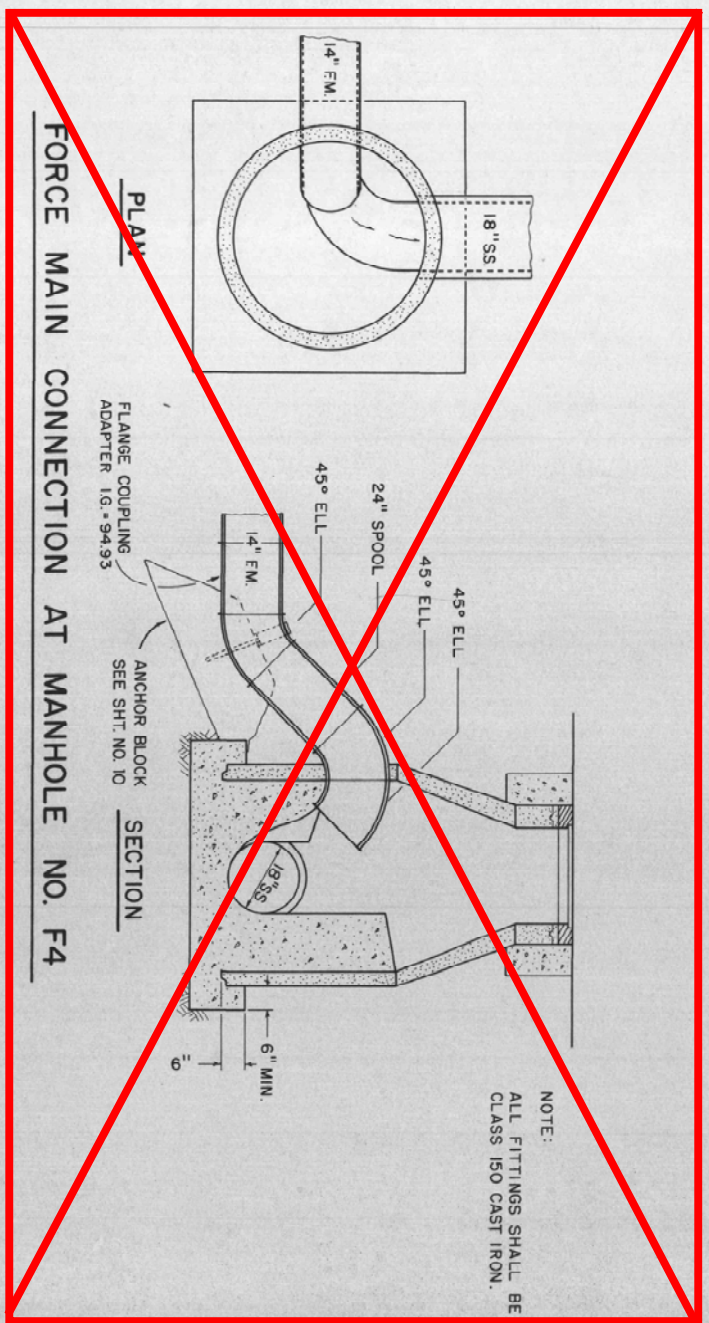


SECTION

NOTE: TYPE II MANHOLE APPLIES TO LLANO TRUNK AT WEST 3RD STREET I12716MH48, I12716MH47, I12716MH46, I12716MH45, I12717MH17, I12717MH57, AND I12717MH55. REFER TO SHEET 10 FOR OUTSIDE DROP INLET STRUCTURE ON I12717MH17.



SECTION



FORCE MAIN CONNECTION AT MANHOLE NO. F4

NOTE:
ALL FITTINGS SHALL BE CLASS 150 CAST IRON.

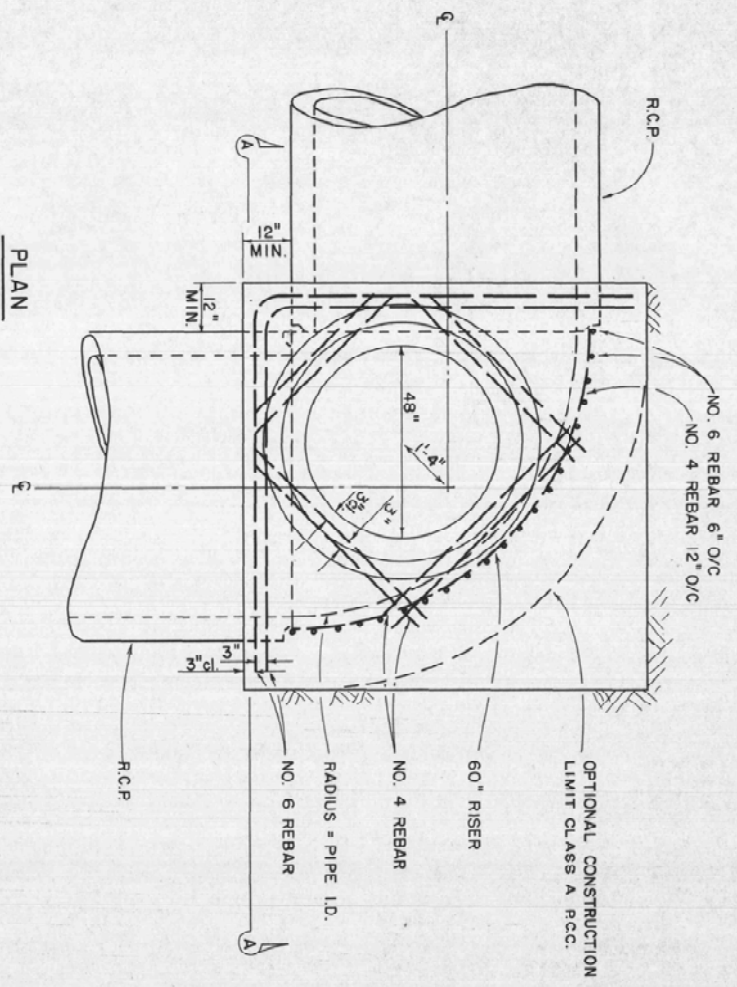
TYPE I MANHOLE
(USE WHEN 'D' IS LESS THAN 30")

TYPE II MANHOLE
(USE WHEN 'D' IS 30" OR GREATER)

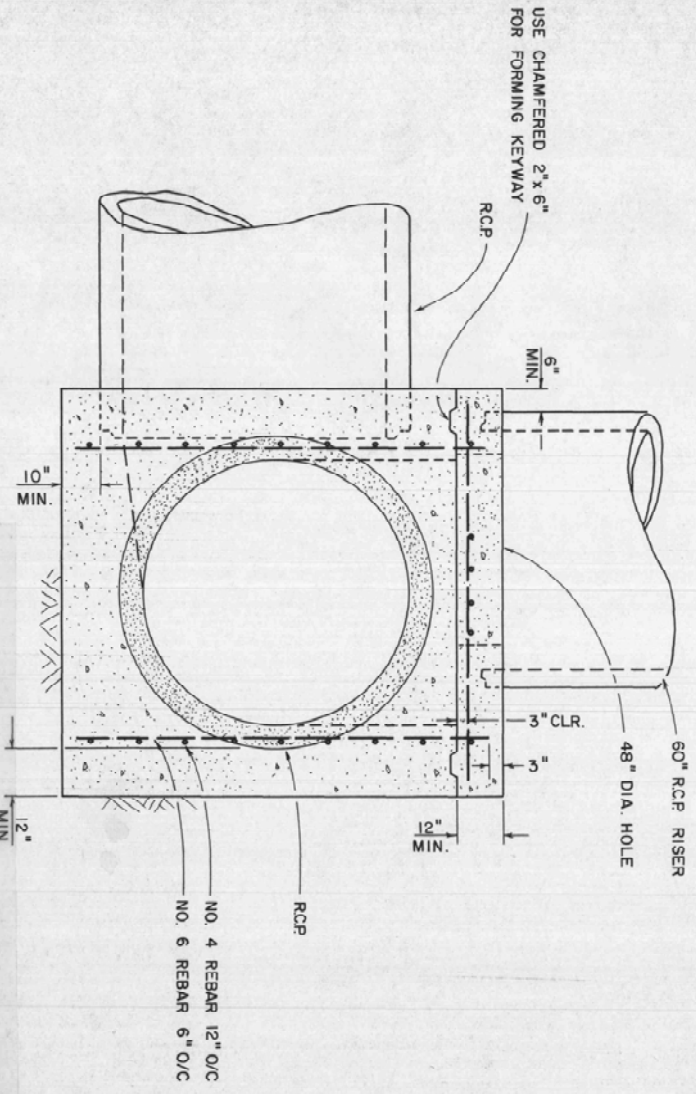
M. HUDIS AND ASSOCIATES
CONSULTING CIVIL ENGINEERS
2100 COUNTY CENTER DRIVE
SANTA ROSA, CALIFORNIA
TELEPHONE 542-8795

CITY OF SANTA ROSA
LLANO INTERCEPT SEWER
MANHOLE DETAILS

Date: _____ Scale: 1" = 2'
APPROVED: BROVDON J. RINA, DIRECTOR OF PUBLIC WORKS
BY: _____ DATE: 6-6-25
DEPUTY DIRECTOR-ENGINEERING, C.E. 12561
OWN: K.L.C. ENG. D.L.S. Sheet B of File Number:
CHK: _____ 75 Sheets 75-02



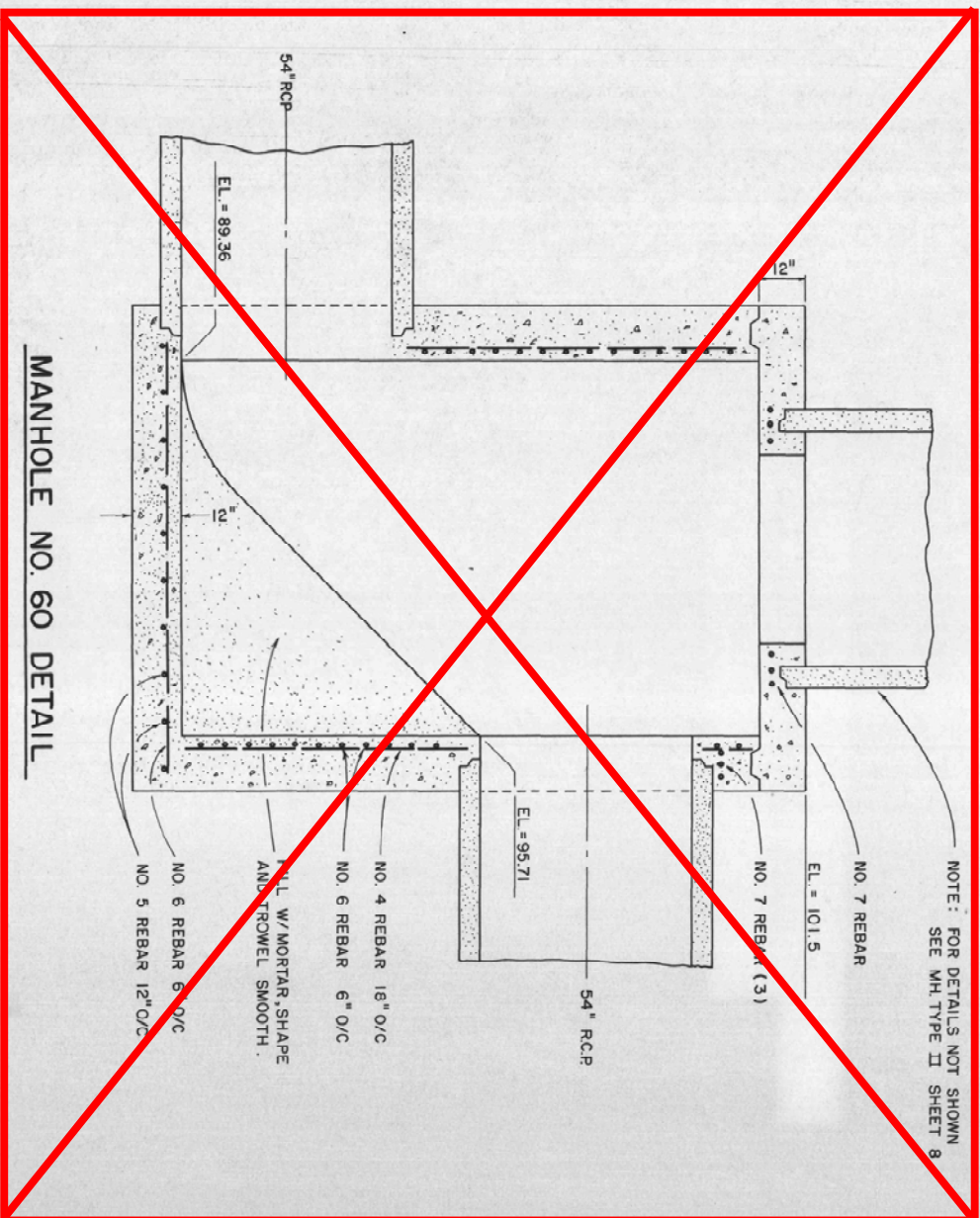
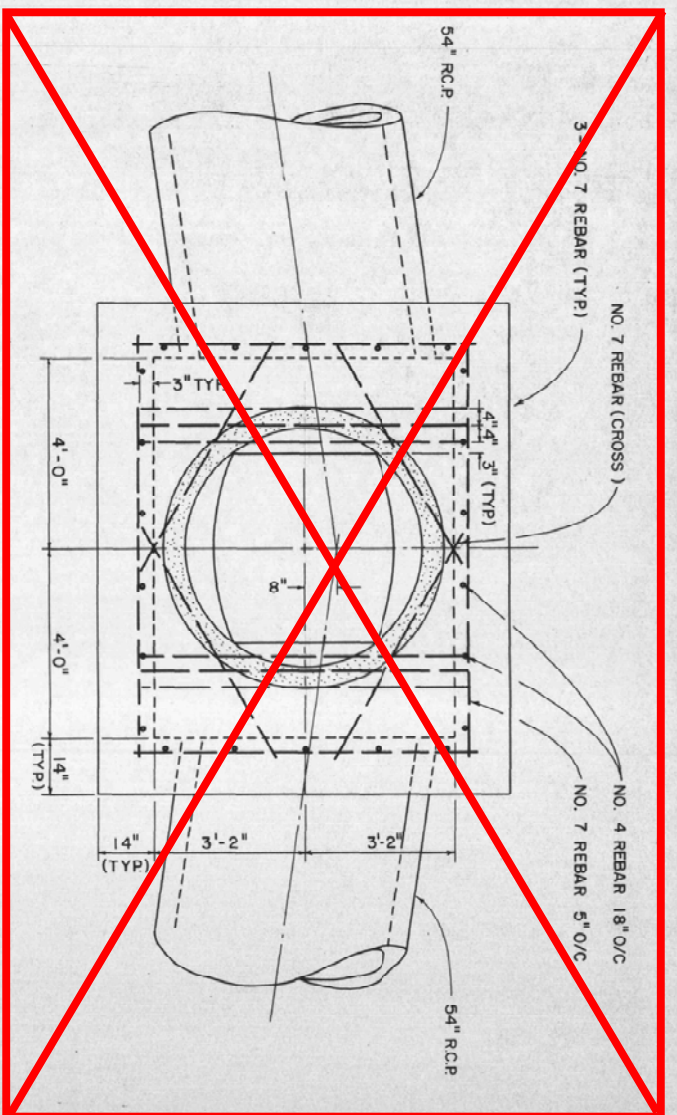
NOTE: TYPE III MANHOLE APPLIES TO LLANO TRUNK AT WEST 3RD STREET I12717MH56.



SECTION A - A
TYPE III MANHOLE DETAIL

6) In Section A-A, Type III manhole detail, on Sheet No. 9 of the contract drawings, the No. 6 reinforcing bars or center need not extend into the reducer slab.

Red. 2

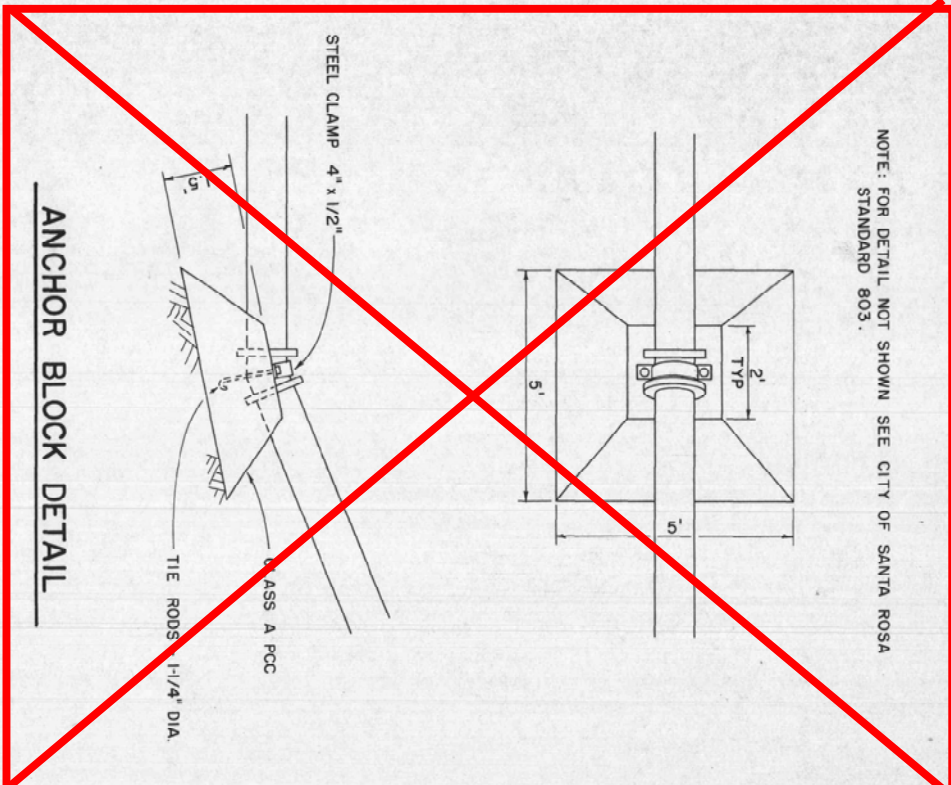


MANHOLE NO. 60 DETAIL

M. HUDIS AND ASSOCIATES
CONSULTING CIVIL ENGINEERS
2100 COUNTY CENTER DRIVE
SANTA ROSA, CALIFORNIA
TELEPHONE 542-8795

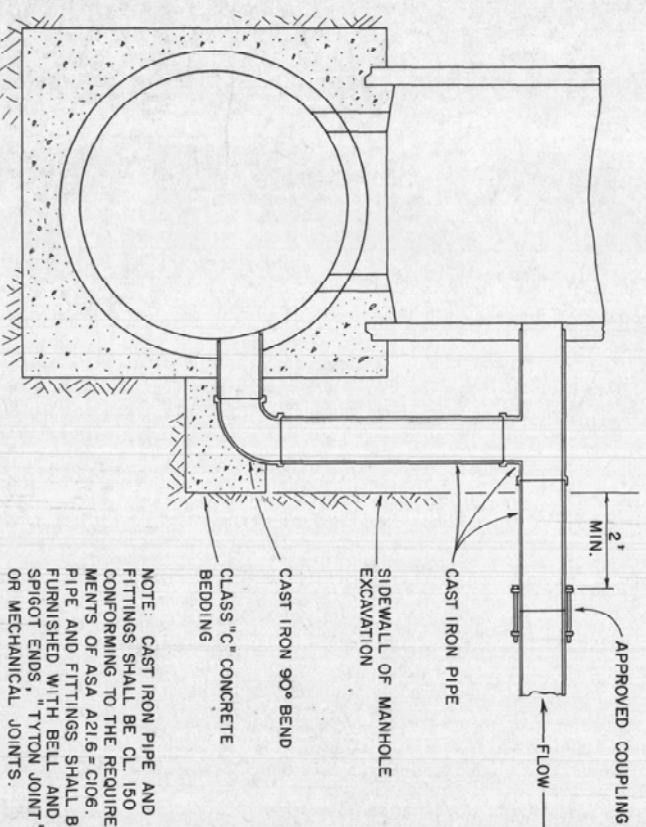
CITY OF SANTA ROSA		Date: _____		Scale: 1" = 2'-0"	
LLANO INTERCEPTOR SEWER		APPROVED: BROUDON J. RINA, DIRECTOR OF PUBLIC WORKS		DATE: 6-6-75	
MANHOLE DETAILS		BY: DEPUTY DIRECTOR-ENGINEERING, CE 12551		SHEET 9 OF 75 SHEETS	
		FILE NUMBER: 75-02			

NOTE: FOR DETAIL NOT SHOWN SEE CITY OF SANTA ROSA STANDARD 803.



ANCHOR BLOCK DETAIL

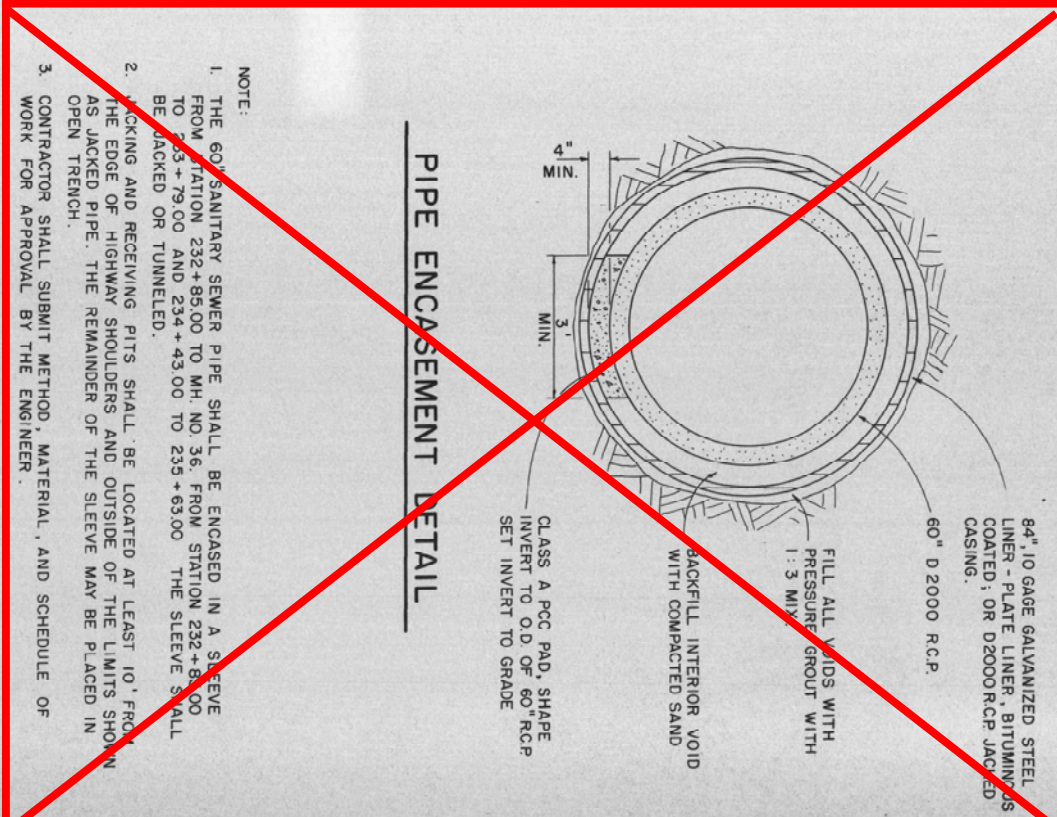
NOTE: FOR APPROVED COUPLINGS AND DETAILS NOT SHOWN SEE CITY OF SANTA ROSA STD. 501



NOTE: CAST IRON PIPE AND FITTINGS SHALL BE CL 150 CONFORMING TO THE REQUIREMENTS OF ASA A21.6 = C106. PIPE AND FITTINGS SHALL BE FINISHED WITH BELL AND SPIGOT ENDS, "TYTON JOINT" OR MECHANICAL JOINTS.

DROP INLET STRUCTURE

LLANO TRUNK AT WEST 3RD STREET I12717MH17

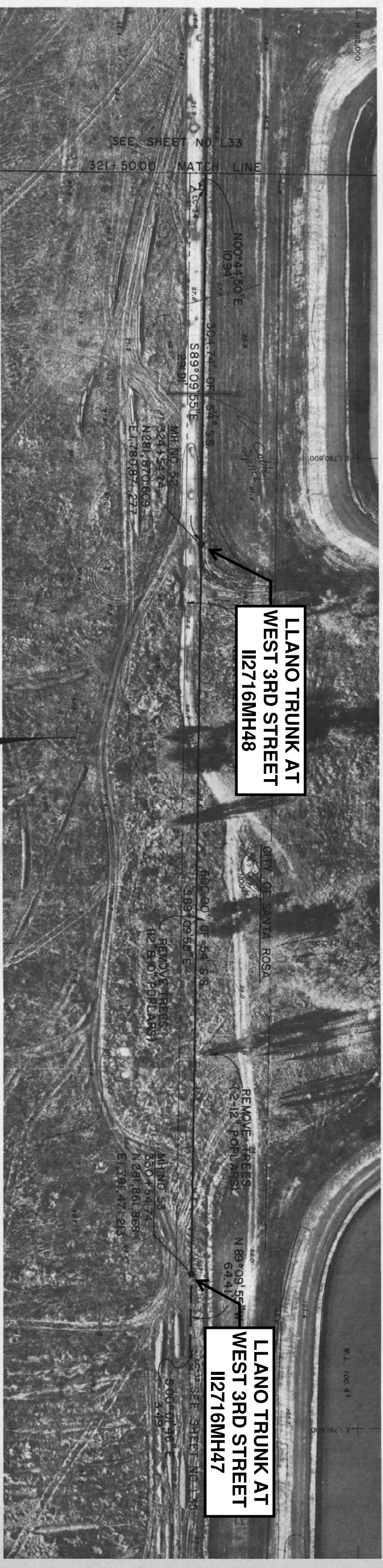
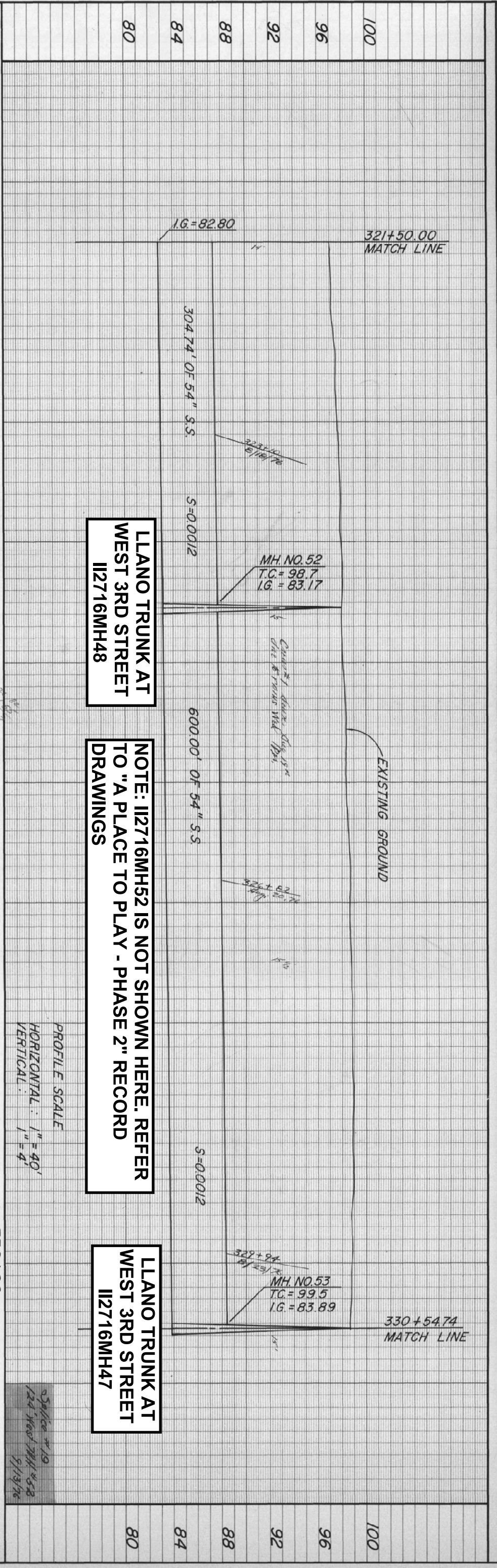


PIPE ENCASEMENT DETAIL

NOTE:
 1. THE 60" SANITARY SEWER PIPE SHALL BE ENCASED IN A SLEEVE FROM STATION 232+85.00 TO MH NO 36. FROM STATION 232+85.00 TO 235+79.00 AND 234+43.00 TO 235+63.00 THE SLEEVE SHALL BE JACKED OR TUNNELED.
 2. JACKING AND RECEIVING PITS SHALL BE LOCATED AT LEAST 10' FROM THE EDGE OF HIGHWAY SHOULDERS AND OUTSIDE OF THE LIMITS SHOWN AS JACKED PIPE. THE REMAINDER OF THE SLEEVE MAY BE PLACED IN OPEN TRENCH.
 3. CONTRACTOR SHALL SUBMIT METHOD, MATERIAL, AND SCHEDULE OF WORK FOR APPROVAL BY THE ENGINEER.

CITY OF SANTA ROSA	
LLANO INTERCEPTOR SEWER	
DETAILS	
Date: _____	Scale: 1" = 2'
APPROVED: BROYDON J. RUIHA, DIRECTOR OF PUBLIC WORKS	
BY: _____ DEPUTY DIRECTOR - ENGINEERING, CE 12561	
OWN: K.L.C.	ENG: D.L.S.
CHK: _____	Sheet 10 of 75 Sheets
_____	File Number: 75 - 02

MHUDIS & ASSOCIATES
 CONSULTING CIVIL ENGINEERS
 2100 GOVATTA CENTER DRIVE
 SANTA ROSA, CALIFORNIA
 TELEPHONE 542-8728



LLANO TRUNK AT WEST 3RD STREET I12716MH48

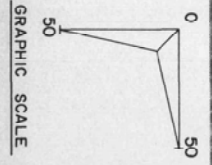
LLANO TRUNK AT WEST 3RD STREET I12716MH48

NOTE: I12716MH52 IS NOT SHOWN HERE. REFER TO "A" PLACE TO PLAY - PHASE 2" RECORD DRAWINGS

LLANO TRUNK AT WEST 3RD STREET I12716MH47

LLANO TRUNK AT WEST 3RD STREET I12716MH47

STA. 321+50.00 TO 330+54.74
TYPE 5 TRENCH W/D1500 RCP

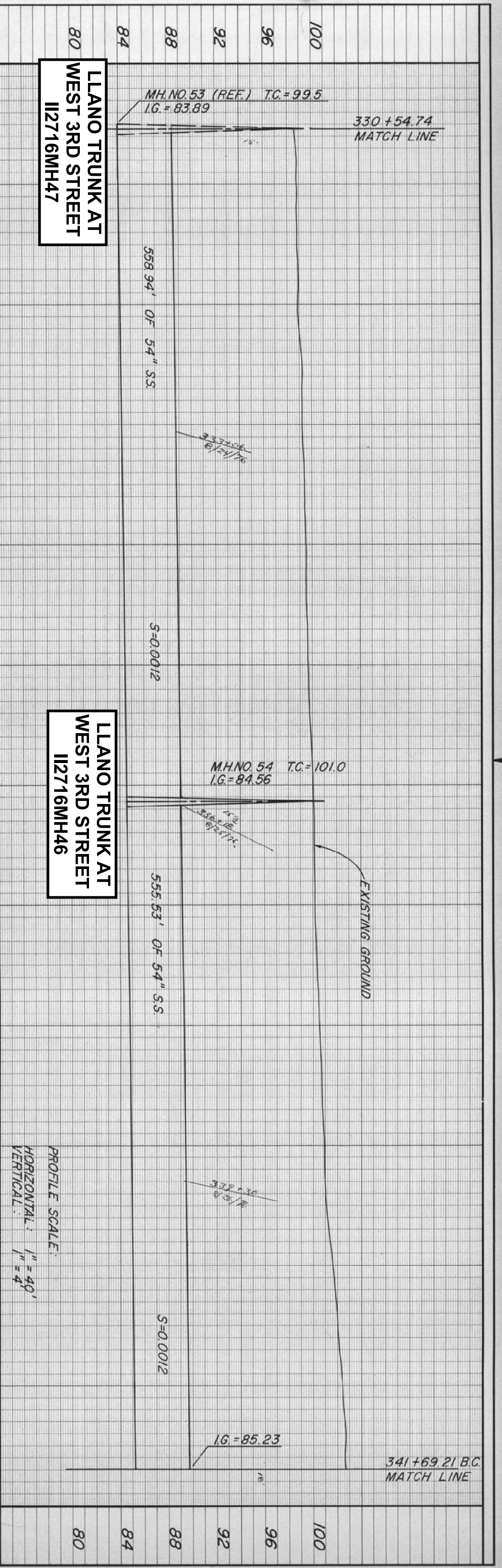


M. HUDIS AND ASSOCIATES
CONSULTING CIVIL ENGINEERS
2100 COUNTY CENTER DRIVE
SANTA ROSA, CALIFORNIA
TELEPHONE 542-8795

R.C.E. 10378

CITY OF SANTA ROSA	
LLANO INTERCEPTOR SEWER	Date: _____
STA. 321+50.00 TO 330+54.74	APPROVED: BRODYDON J. RIVA, DIRECTOR OF PUBLIC WORKS
	BY: _____ DATE: 6-2-75
	DEPUTY DIRECTOR - ENGINEERING, CE 12561
DWN. D.R.B.	ENG. D.L.S.
Sheet 34 of 75	File Number: 75-02

3/19/76
124' Head MH #58
5/13/76

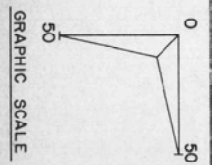
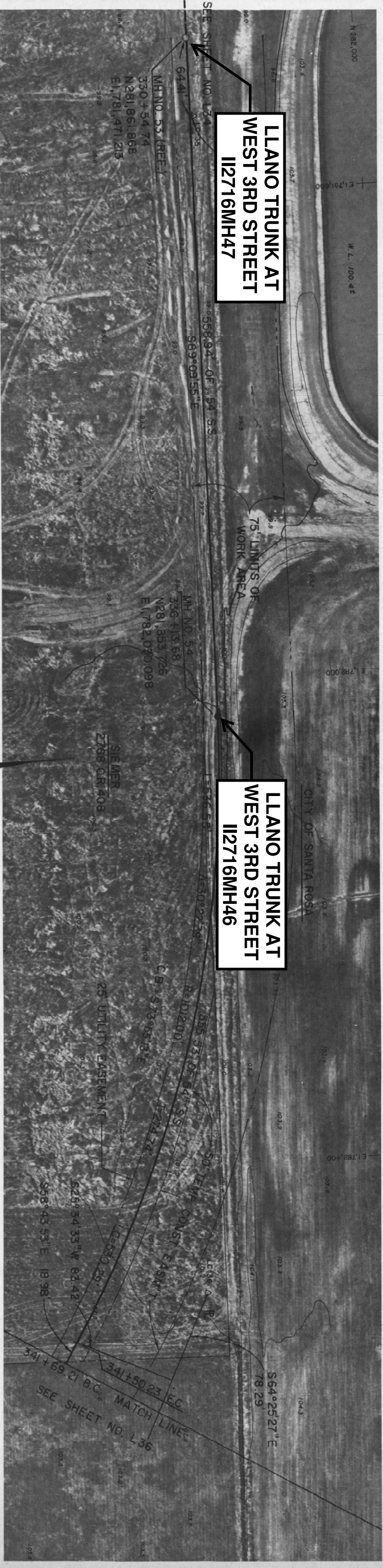


LLANO TRUNK AT
WEST 3RD STREET
112716MH47

LLANO TRUNK AT
WEST 3RD STREET
112716MH46

LLANO TRUNK AT
WEST 3RD STREET
112716MH47

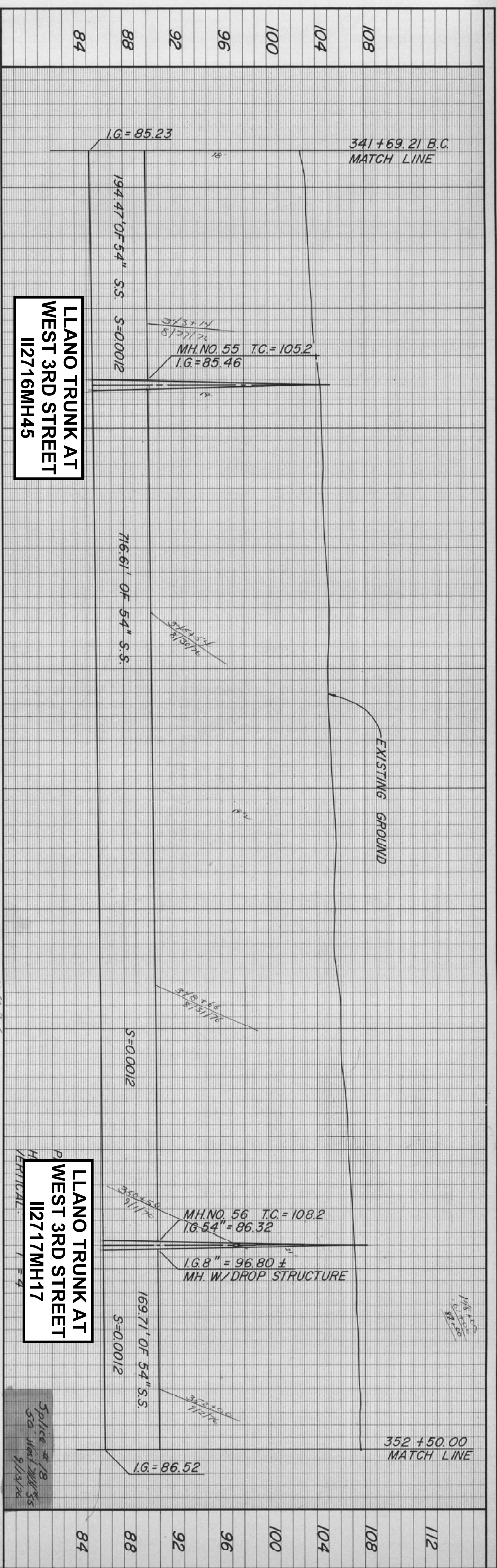
LLANO TRUNK AT
WEST 3RD STREET
112716MH46



STA. 330+54.74 TO 337+00.00
TYPE 5 TRENCH W/D1550 RCP
STA. 337+00.00 TO 341+69.21
TYPE 5 TRENCH W/D1900 RCP

M. HUDIS AND ASSOCIATES
CONSULTING CIVIL ENGINEERS
2100 COUNTY CENTER DRIVE
SANTA ROSA, CALIFORNIA
TELEPHONE 542-8795

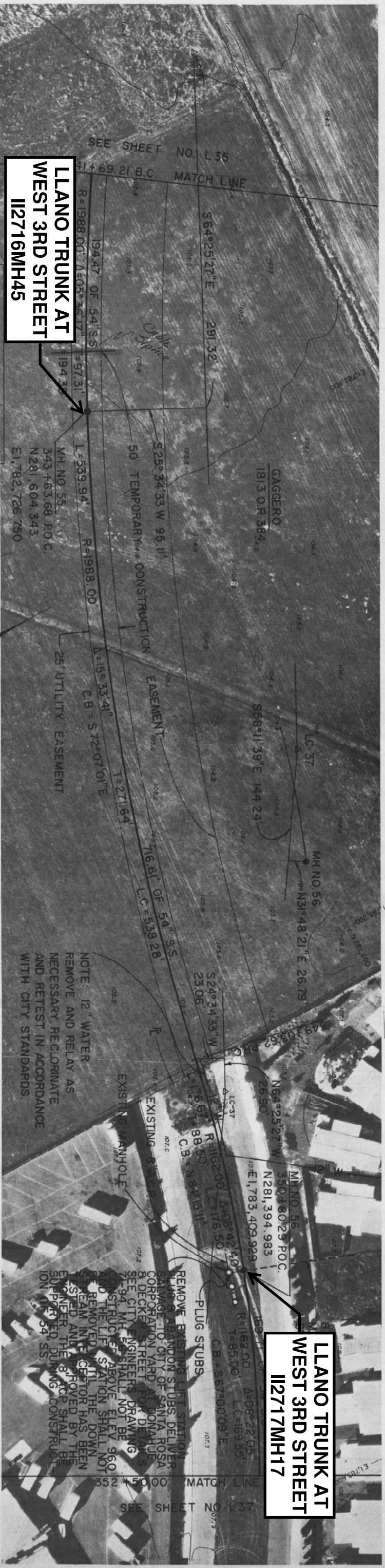
CITY OF SANTA ROSA	
LLANO INTERCEPTOR SEWER	DATE: _____
STA. 330+54.74 TO 341+69.21	APPROVED: BROVDON J. RIFA, DIRECTOR OF PUBLIC WORKS
DWN. DRB. _____	BY: _____
ENG. D.L.S. _____	DEPUTY DIRECTOR - ENGINEERING, CE 12561
Sheet 1-35 of 75 Sheets	DATE: 6-1-78
File Number: 75-02	



LLANO TRUNK AT WEST 3RD STREET I12716MH45

LLANO TRUNK AT WEST 3RD STREET I12717MH17

LLANO TRUNK AT WEST 3RD STREET I12717MH17



LLANO TRUNK AT WEST 3RD STREET I12716MH45

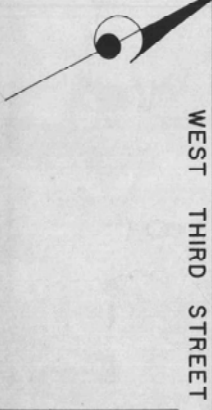
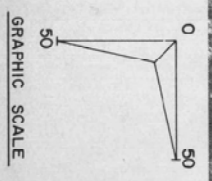
LLANO TRUNK AT WEST 3RD STREET I12717MH17

STA 341+69.21 TO 343+63.68
TYPE 5 TRENCH W/ D1900 R.C.P.
STA. 343+63.68 TO 350+80.29
TYPE 5 TRENCH W/ D2050 R.C.P.
STA. 350+80.29 TO 352+50.00
TYPE 5 TRENCH W/ D2100 R.C.P.

M. HUDIS AND ASSOCIATES
CONSULTING CIVIL ENGINEERS
2100 COUNTY CENTER DRIVE
SANTA ROSA, CALIFORNIA
TELEPHONE 542-8795

CITY OF SANTA ROSA
LLANO INTERCEPTOR SEWER
STA. 341+69.21 TO 352+50.00

Date: _____
APPROVED: BRODWIN J. RIIHA, DIRECTOR OF PUBLIC WORKS
BY: _____ DEPUTY DIRECTOR - ENGINEERING, CE 12561
DATE: 6-1-75
DWG. D.R.B. ENG. D.L.S. Sheet L-360f
CHK. _____ 75 Sheets
File Number: 75-02



WEST THIRD STREET

NOTE: 12" WATER REMOVE AND RELAY AS NECESSARY, RECLIMATE AND RETEST IN ACCORDANCE WITH CITY STANDARDS.

REMOVE EXISTING 12" STATION 1166.00 TO 1167.00. DELIVER SALVAGE TO CITY OF SANTA ROSA CORPORATION YARD AT DONAHUE & DECKER STREET FOR DETAILS. SEE CITY ENGINEERS DRAWING 71-94. MH. 55 SHALL NOT BE RECONSTRUCTED ABOVE ELEV. 96.00 AND THE LIFE STATION SHALL NOT BE REMOVED UNTIL THE DOWN STREAM INTERCEPTOR HAS BEEN TESTED AND APPROVED BY THE ENGINEER. THE 6" RCP SHALL BE SUPPORTED DURING CONSTRUCTION.

PLUG STUBS

EXISTING MANHOLE

EXISTING

EXISTING

EXISTING

EXISTING

EXISTING

EXISTING

EXISTING

EXISTING

EXISTING

EXISTING

EXISTING

EXISTING

EXISTING

EXISTING

EXISTING

EXISTING

EXISTING

EXISTING

EXISTING

EXISTING

EXISTING

EXISTING

EXISTING

EXISTING

EXISTING

EXISTING

EXISTING

EXISTING

EXISTING

EXISTING

EXISTING

EXISTING

EXISTING

EXISTING

EXISTING

EXISTING

EXISTING

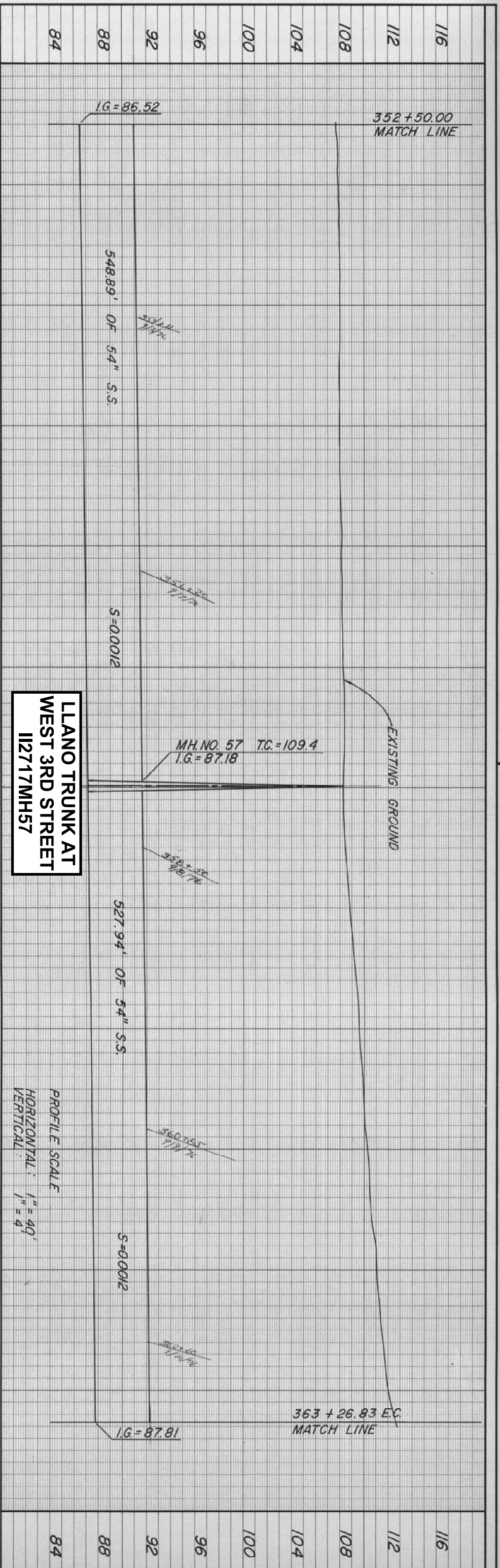
EXISTING

EXISTING

EXISTING

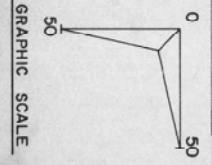
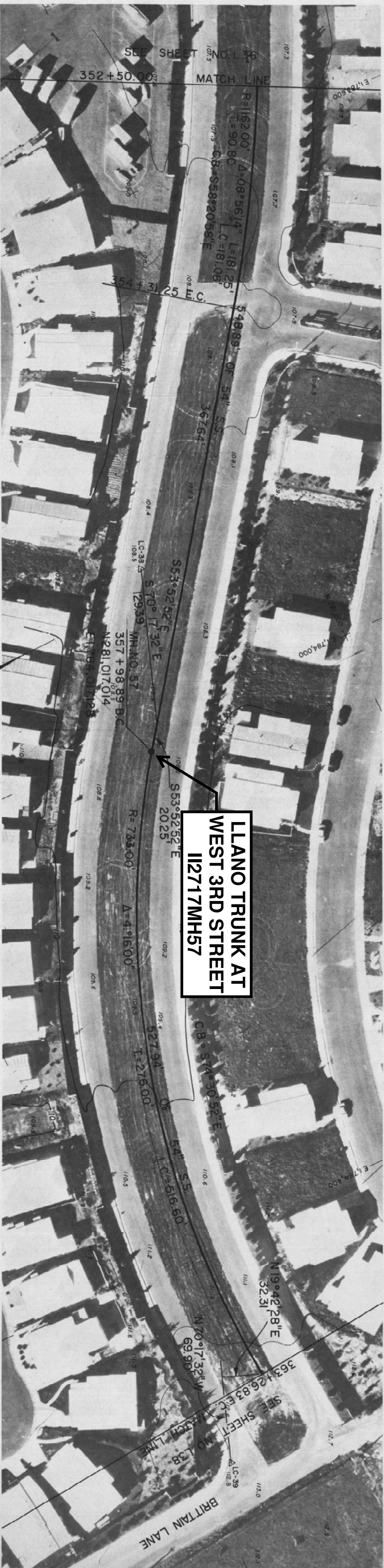
EXISTING

EXISTING



**LLANO TRUNK AT
WEST 3RD STREET
112717MH57**

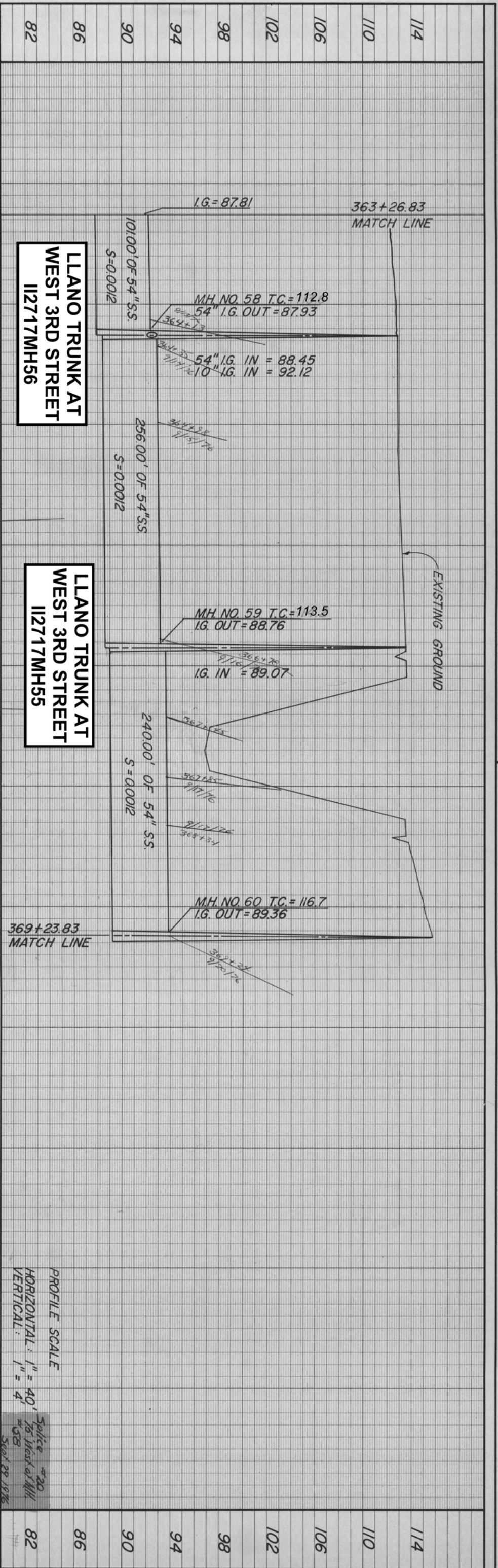
**LLANO TRUNK AT
WEST 3RD STREET
112717MH57**



STA 352+50.00 TO 357+98.89
TYPE 5 TRENCH W/D2100 R.C.P.
STA 357+98.89 TO 363+26.83
TYPE 5 TRENCH W/D2400 R.C.P.

M. HUDIS AND ASSOCIATES
CONSULTING CIVIL ENGINEERS
2100 COUNTY CENTER DRIVE
SANTA ROSA, CALIFORNIA
TELEPHONE 542-8795

CITY OF SANTA ROSA		Date:	Scale: 1" = 40'
LLANO INTERCEPTOR SEWER		APPROVED: BRODYON J. RINA, DIRECTOR OF PUBLIC WORKS	DATE: 6-2-75
STA. 352+50.00 TO 363+26.83 E.C.	CHK. _____	DEPUTY DIRECTOR - ENGINEERING, CE 12561	Sheet 1-37 of 75 Sheets
	OWN. D.R.B. _____	ENG. D.L.S. _____	File Number: 75-02



LLANO TRUNK AT WEST 3RD STREET
112717MH56

LLANO TRUNK AT WEST 3RD STREET
112717MH55

LLANO TRUNK AT WEST 3RD STREET
112717MH55

LLANO TRUNK AT WEST 3RD STREET
112717MH56

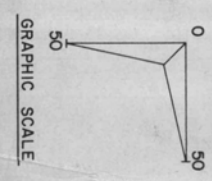


STA. 363 + 26.83 TO 363 + 90.00 TYPE 5 TRENCH W/D 2400 R.C.P.	STA. 364 + 65.00 TO 366 + 60.00 TYPE 6 TRENCH W/D 2400 R.C.P.
STA. 363 + 90.00 TO 364 + 15.00 TYPE 6 TRENCH W/D 2400 R.C.P.	STA. 366 + 60.00 TO 369 + 23.83 TYPE 4 TRENCH W/D 2500 R.C.P.
STA. 364 + 15.00 TO 364 + 65.00 TYPE 5 TRENCH W/D 2400 R.C.P.	

M HUDIS AND ASSOCIATES
CONSULTING CIVIL ENGINEERS
2100 COUNTY CENTER DRIVE
SANTA ROSA, CALIFORNIA
TELEPHONE 542-8795

CITY OF SANTA ROSA
LLANO INTERCEPTOR SEWER
STA. 363+26.83 TO 369+23.83

Date: _____
Scale: 1" = 40'
APPROVED: BROVDON J. RIIHA, DIRECTOR OF PUBLIC WORKS
BY: _____
DEPUTY DIRECTOR - ENGINEERING, CE 12561
DATE: 6-1-75
DWN, G.J.G. ENG. D.L.S. Sheet L-36 of _____
CHK: _____ 75 Sheets 75 - 02



TEL. CO. ISOL. CONDUIT 14
BUR. CABLE 14
TEL. CO. REFERENCE ONLY

CALL 542-9000 EXT. 438
TO HAVE TEL. CO. FACILITIES
TUNED AND MARKED IN FIELD

NOTE:
THERE IS NO CONSTRUCTION
EASEMENT ACROSS WOODS
PARCEL.

NOTE: REPLACE ALL DAMAGED
LANDSCAPING AND ROCK SLOPE
PROTECTION COMPACT TRENCH TO
10% P.C. OR GREATER WITHIN
WATER AGENCY RIGHT OF WAY.

MH NO. 60
369+23.83
N 281 341.734
E 1784 727.535
SPECIAL MANHOLE SEE
DETAIL SHEET

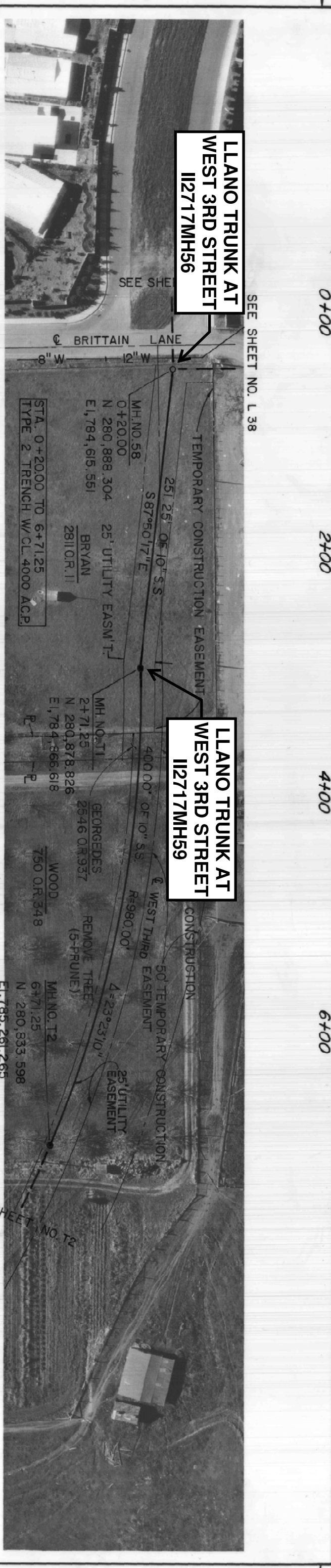
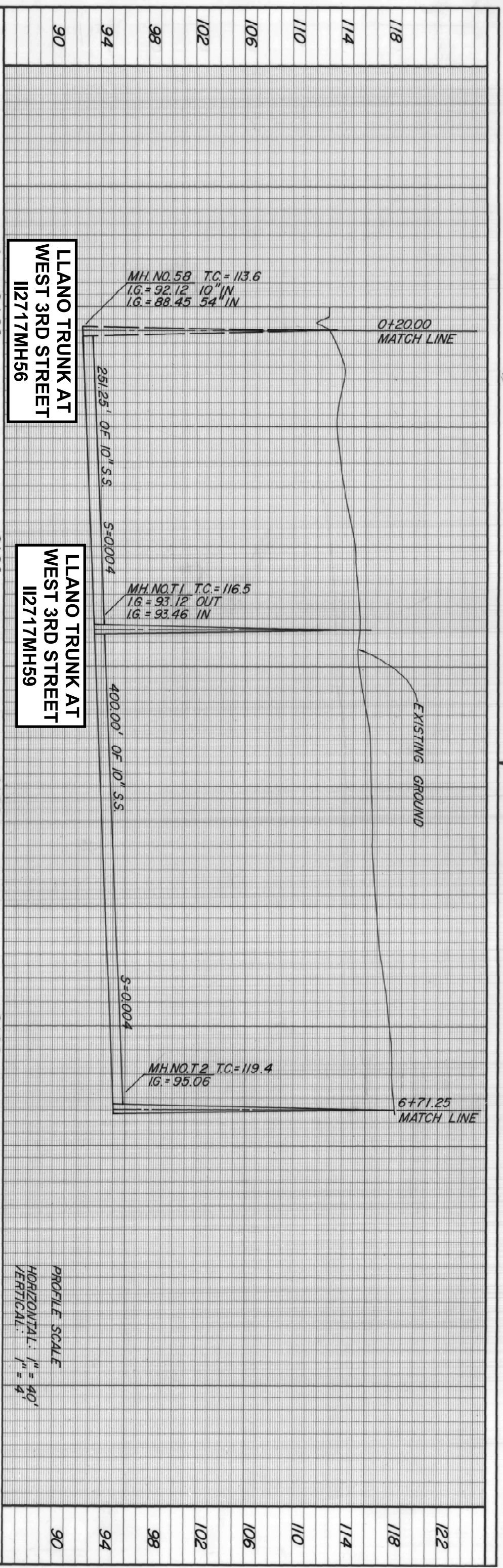
WEST COLLEGE
OXIDATION POND
NO. 1

X-Force, Capon Link
Z-Removal of Riprap

X-Force, Capon Link
Z-Removal of Riprap

X-Force, Capon Link
Z-Removal of Riprap

Splice +20
75 West of MH
#53
Sept 28 1976



SEE SHEET NO. L 38

SEE SHEET NO. T2

GRAPHIC SCALE

SEE SHEET NO. L 38

SEE SHEET NO. T2

CITY OF SANTA ROSA

LLANO INTERCEPTOR SEWER

STA. 0+20.00 TO 6+71.25

Date: _____

Approved: BROYDON J. RINIA, DIRECTOR OF PUBLIC WORKS

By: _____, DEPUTY DIRECTOR - ENGINEERING, CE 12561

DATE: 6-6-75

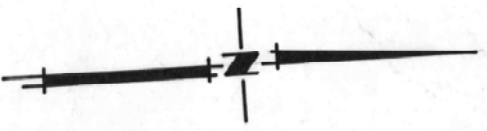
Scale: 1" = 40'

Sheet: T-1 of 75 Sheets

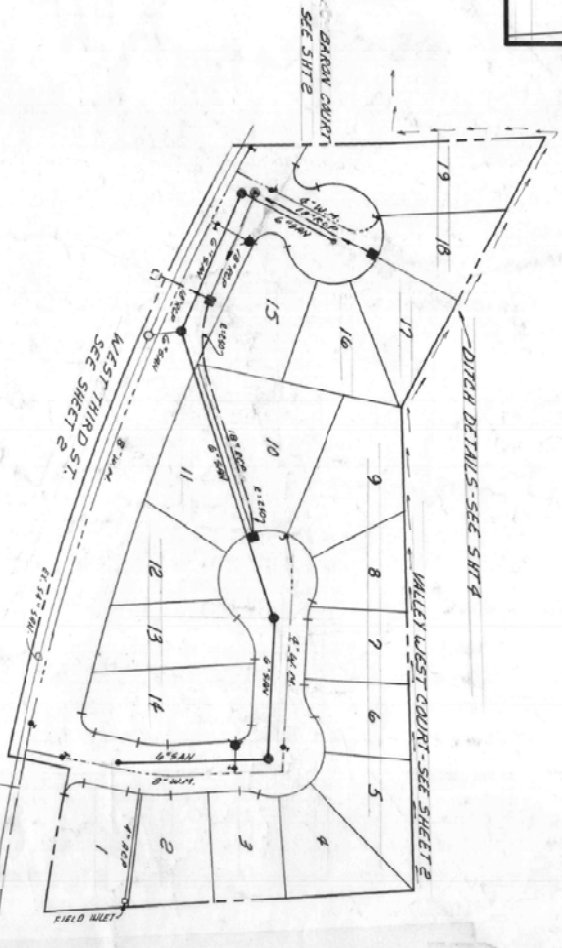
File Number: 75-02

M. HUDIS AND ASSOCIATES
CONSULTING CIVIL ENGINEERS
2100 COUNTY CENTER DRIVE
SANTA ROSA, CALIFORNIA
TELEPHONE 542-8795

R.C.E. 10378



SCALE 1"=80'



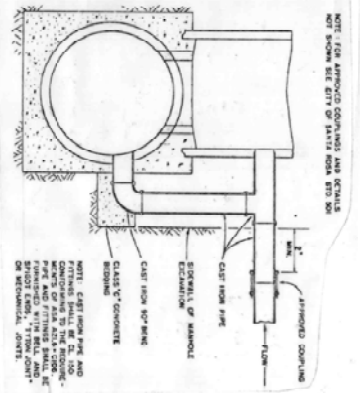
NOTE:
UNDERGROUND CONTRACTOR SHOULD BE AWARE OF DIRECT BURIAL TELECOMMUNICATION CABLE AND USE EXTREME CAUTION WHEN EXCAVATING AN AREA OF 6" x 4" x 36" SHALLOW SEWER.

INDEX

SHEET NO.	DESCRIPTION
1	COVER SHEET
2	PLAN & PROFILE
3	ROUGH GRADING PLAN
4	DITCH PLAN & PROFILE
5	WEST THIRD ST. LANDSCAPE PLANS

AS BUILT

REAR - OUT MANHOLE STRUCTURE AS ACCESSARY TO INSTALL INLET REGROUT AFTER INSTALLATION NO DEBRIS ALLOWED TO GUIDE SEWER LINE.



DROP INLET STRUCTURE

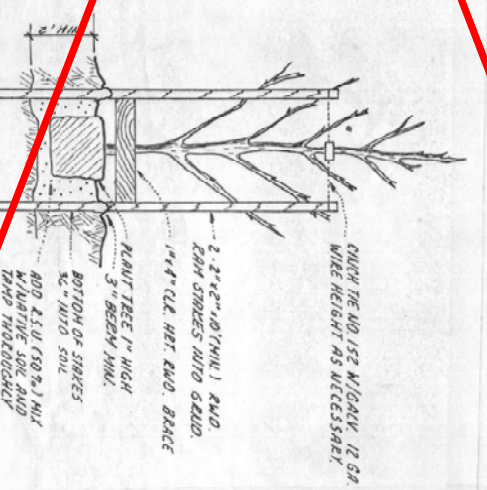
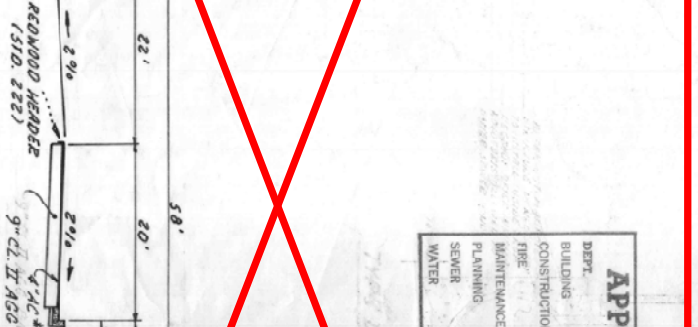
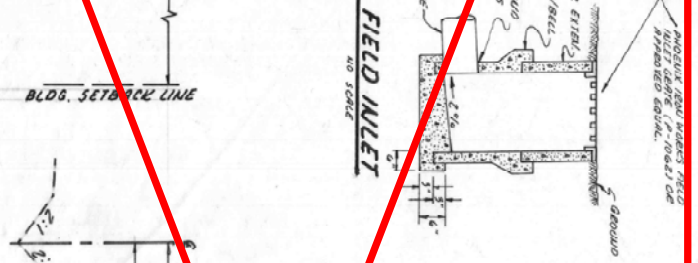
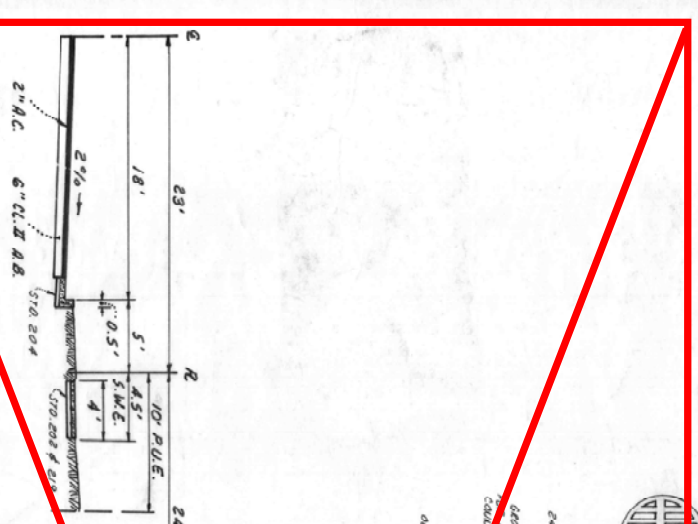
AS BUILT
PROJECT SUBMITTED FOR THE CONTRACTOR - GILBERT BROS. - 1000 GILBERT, UNDER-GRASS - SAN JOSE, CALIFORNIA. SUP. DAN O'NEILL, LAND CO. S.S. PIPE COMPLETED 2000 AC. MARK & JOHN MANSOURI 2000 AC. 150' P.C. - 1" AND 2" DIAM. WALKERS CLEANING HOLES. G.O.D. 7-18-78 D.D. INSPECTOR - DEL DAVIS PROJECT COMPLETED 1979

NOTE: DETAIL "DROP INLET STRUCTURE" APPLIES TO LLANO TRUNK AT WEST 3RD STREET I12716MH45

APPROVED BY:

DEPT.	INITIALS	DATE
BUILDING	[Signature]	12-6-77
FIRE	[Signature]	12-7-77
CONSTRUCTION	[Signature]	12-6-77
PLANNING	[Signature]	12-8-77
MAINTENANCE	[Signature]	12-8-77
SEWER	[Signature]	12-8-77
WATER	[Signature]	12-8-77

- PROPOSED STREET TREES**
1. BROAD OAK - GOLDEN RAILITE
 2. VALLEY WEST CT - THUNDER OAK ROUNDER PLYM
 3. WEST THIRD ST - PERSHETT 5



- GENERAL NOTES:**
1. All material, workmanship and construction shall conform to the "City of Santa Rosa Standard Plans" and "Construction Specifications for Public Improvements."
 2. "Std. - 123 dated 1-65" etc., refers to the City of Santa Rosa Standard Plan number and date of approval.
 3. The locations of the existing underground utilities as shown on these plans are based on the best information available; however, the City of Santa Rosa and the contractor assume no responsibility for the accuracy of the information shown, or for the final utility locations. The contractor shall cooperate with all utility companies and other contractors working within the limits of the project.
 4. Depth of water mains from finish grade: Provide 34" minimum cover unless otherwise specified on plans.
 5. Final connections to existing water mains to be made by City forces at developer's expense.
 6. Water service shall be installed in accordance with Santa Rosa Standard 811 approved December 1975.
 7. All sewer pipe shall be VCP or Class 2400 AC.
 8. All laterals (sewer and water) to be installed before paving of any streets. All laterals shall fall in the center 1/3 of 16" except dial service laterals.
 9. Distances and invert grades of storm drains are to and at the centerline of catch basins and manholes.
 10. Distances and invert grades of sewers are to and at the center of manholes and catch basins.
 11. Seven (7) permanent monuments shall be furnished and installed by the Contractor in accordance with Standard 900 dated 5-75 after completion of all improvements. The locations shall be as shown on plan and will be staked by the Engineer.
 12. Curb and gutter shall conform to the City of Santa Rosa Standard 204 approved 5-75 (two (2) feet).
 13. Street lighting shall be constructed in such a manner and at the cost of the developer to provide the L-1-D-100 schedule to the City.
 14. Storm drains shall be ASTM C76-51T-80" Class III, except as noted on the plans.
 15. Upon completion of curb and gutter, the sewer contractor shall accurately locate the end of each house sewer service and reference same by the letter "S" scribbled into the face of curb. The letter "S" shall be 4" high and completely legible.
 16. Upon completion of curb and gutter, the water contractor shall accurately locate the end of each house water service and reference same by the letter "W" scribbled into the face of curb. The letter "W" shall be 4" high and completely legible.
 17. The contractor shall secure all necessary encroachment permits from the City of Santa Rosa and the Sonoma County Water Agency.
 18. Street signs shall be lettering & markings "define" or approved equal provided and placed at each intersection by the contractor. Locations to be set by the City Engineer.
 19. Location of sanitary sewer laterals on cut-deck lots shall be coordinated with developer's plot plan, but in all cases shall be located in the center 1/3 of each lot.
 20. All new sewer mains and stubs are to be plugged at the existing sewer connection until the new main or stub has been accepted by the City of Santa Rosa in full.
 21. All existing manholes to be adjusted to final grade.
 22. Contractor agrees that he shall assume sole and complete responsibility for job site conditions during the course of construction of this project, including safety of all persons and property; that this requirement shall apply continuously and hold the contractor and the engineer harmless from any and all liability, legal and alleged, in connection with the performance of work on this project, excepting for liability arising from the sole negligence of the owner or engineer.
 23. The contractor shall secure a trench permit from the California Division of Industrial Safety prior to excavating of any trench over five (5) feet in depth.
 24. No construction shall commence without prior approval of the City of Santa Rosa's Chief Construction Engineer.
 25. BENCH MARK City of Santa Rosa B.M. D-62, Top of iron pin at the centerline intersection of Stony Point Road and Greenbrook Drive. ELEVATION 121.133.
 26. All underground contractors shall call "Underground Service Alert" at 900-642-0123 at least forty-eight (48) hours prior to excavation for locating underground utilities.
 27. All sidewalk and street trees noted on plans as public improvements may be deferred until completion of building structures. However, these improvements must be installed prior to building occupancy approval by City.

LEGEND

DESCRIPTION	PROPOSED	EXISTING
PROPERTY LINE & FACE OF CURB	[Symbol]	[Symbol]
SAUTRY SEWER & MANHOLE	[Symbol]	[Symbol]
SAUTRY SEWER & CLEANOUT	[Symbol]	[Symbol]
STORM DRAIN & MANHOLE	[Symbol]	[Symbol]
STORM DRAIN & CATCH BASIN	[Symbol]	[Symbol]
WATER MAIN & GATE VALVE	[Symbol]	[Symbol]
2" BLOWOFF	[Symbol]	[Symbol]
PIPE MIDPOINT	[Symbol]	[Symbol]
DUAL WATER SERVICE (1"-1")	[Symbol]	[Symbol]
SINGLE WATER SERVICE (1.5")	[Symbol]	[Symbol]
CITY HOBBYHUNT	[Symbol]	[Symbol]
STOP SIGN LOCATION	[Symbol]	[Symbol]

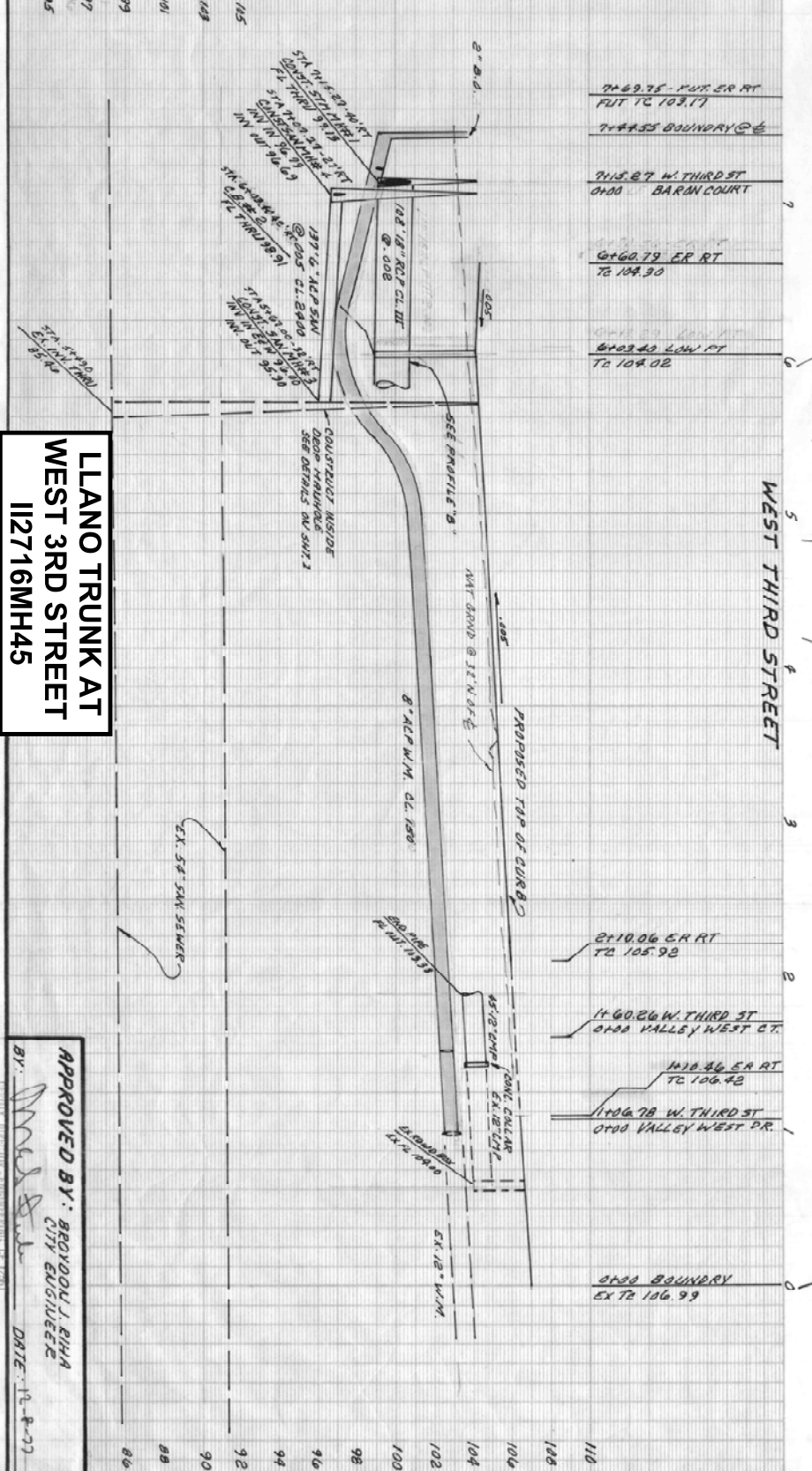
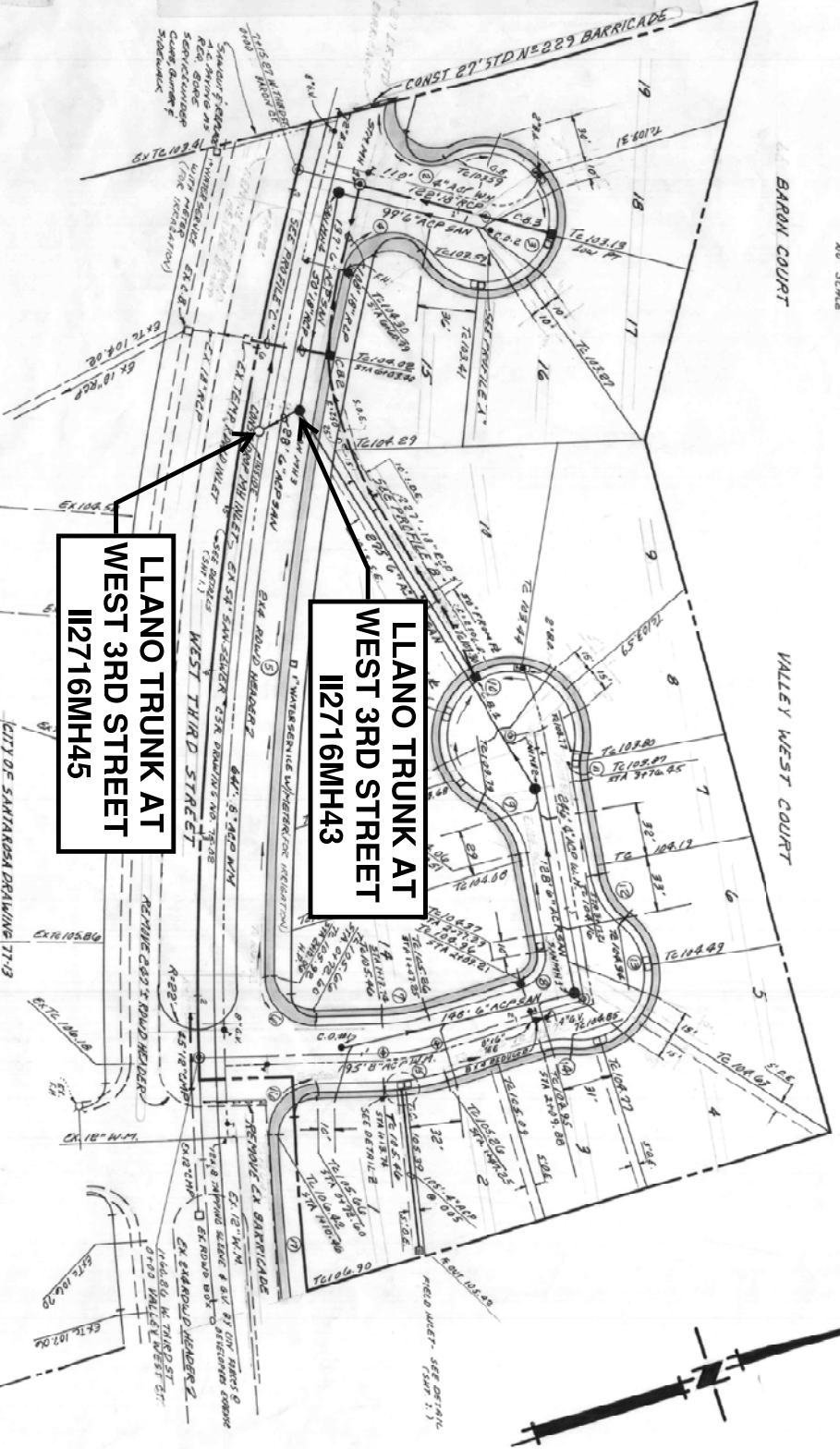
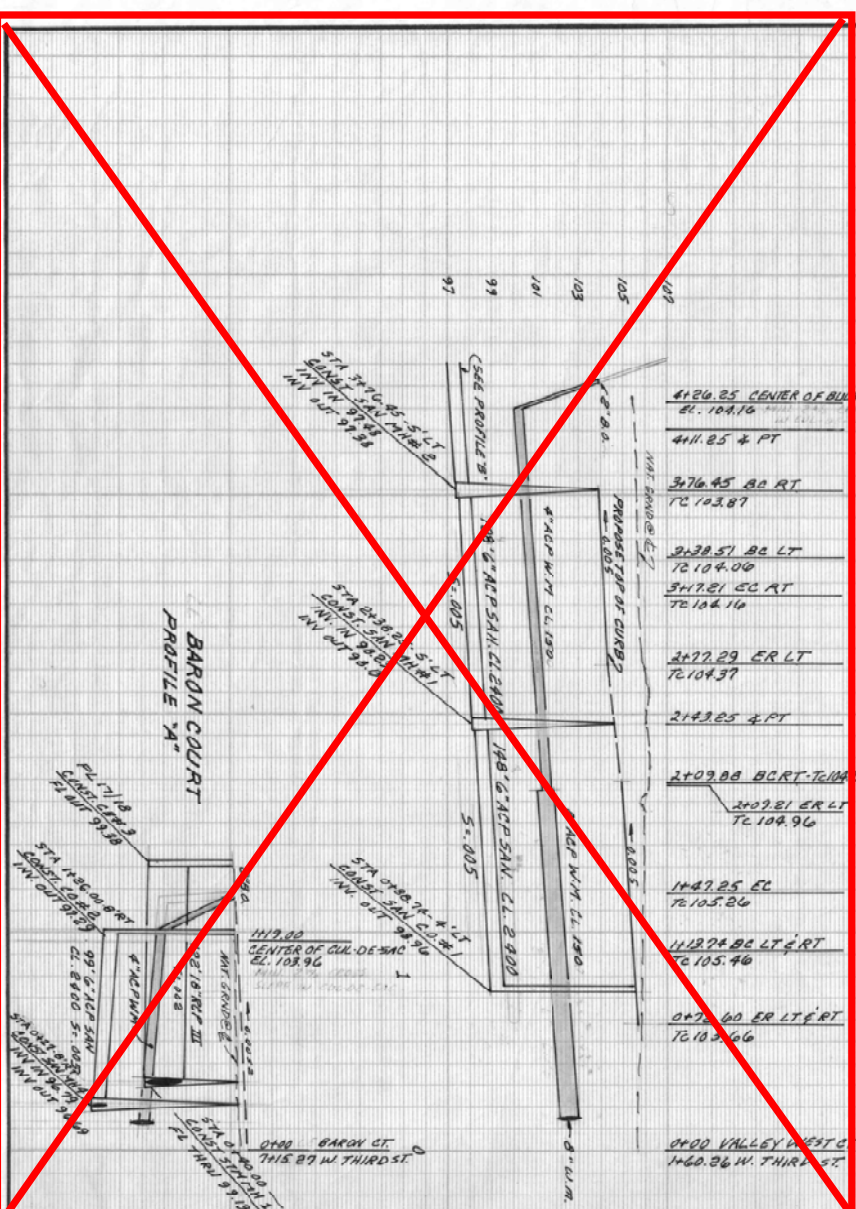
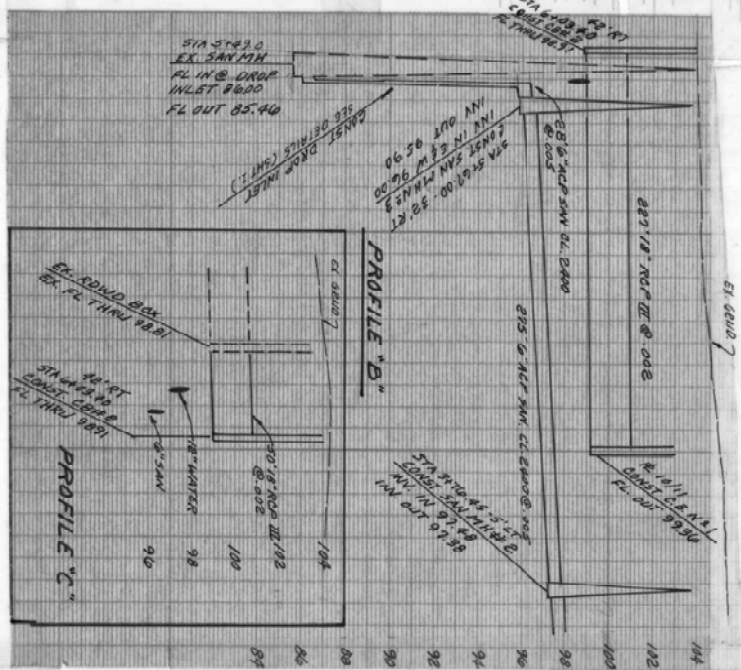
APPROVED BY: BROUDON J. RIVA
CITY ENGINEER
DATE: 12-8-77

CITY OF SANTA ROSA FILE NO. 77-163

FACE OF CURB CURVE DATA

ITEM	STATION	OFF-SET
1	2+38.25	5' LT
2	2+76.45	5' LT
3	5+67.00	32' RT
4	7+07.27	27' RT
5	0+27.00	8' RT
6	0+87.74	4' LT
7	126.00	8' RT
8	7+15.27	40' RT
9	PL 1011	0
10	6+33.90	42' RT
11	18 71/8	

RADIUS	DELTA	LENGTH
2	131° 34' 15"	68.89
3	202° 47' 08"	183.42
4	132° 57' 17"	69.61
5	12° 54' 45"	441.27
6	91° 25' 36"	47.87
7	15° 21' 30"	28.68
8	83° 42' 30"	29.22
9	53° 55' 18"	47.06
10	256° 40' 07"	179.19
11	220° 44' 49"	19.85
12	40° 55' 34"	35.71
13	147° 31' 47"	102.99
14	22° 53' 43"	19.98
15	15° 21' 30"	38.33
16	91° 25' 36"	47.87
17	2° 58' 33"	101.69

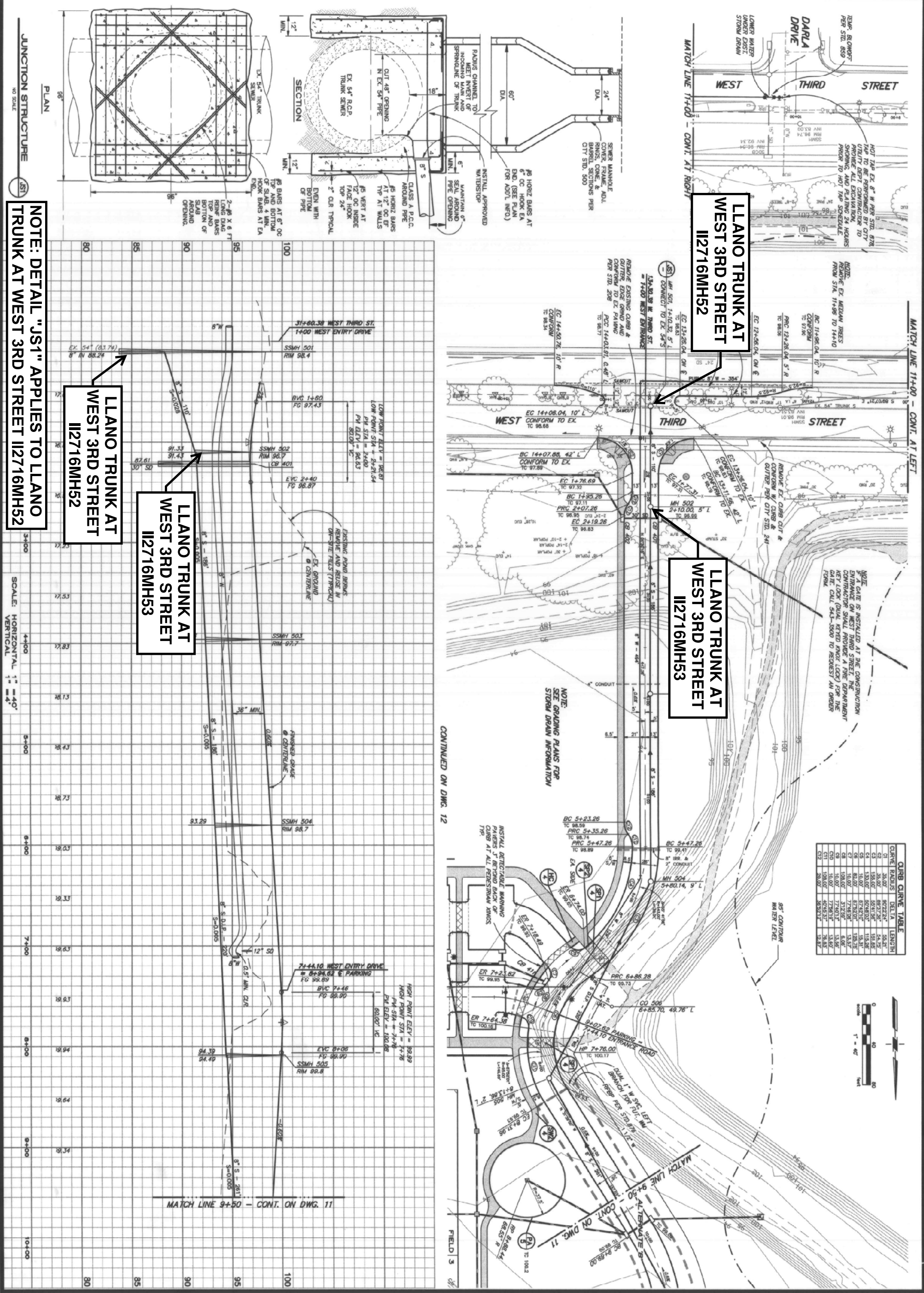


LLANO TRUNK AT WEST 3RD STREET I12716MH45

LLANO TRUNK AT WEST 3RD STREET I12716MH45

LLANO TRUNK AT WEST 3RD STREET I12716MH43

APPROVED BY: BEYOND J. RINA
CITY ENGINEER
DATE: 7-8-77



NOTE: DETAIL "JS1" APPLIES TO LLANO TRUNK AT WEST 3RD STREET I12716MH52

LLANO TRUNK AT WEST 3RD STREET I12716MH52

LLANO TRUNK AT WEST 3RD STREET I12716MH53

LLANO TRUNK AT WEST 3RD STREET I12716MH52

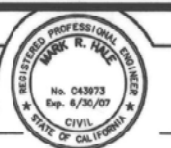
LLANO TRUNK AT WEST 3RD STREET I12716MH53

JUNCTION STRUCTURE
 NO SCALE
 JS1

SCALE: HORIZONTAL 1" = 40'
 VERTICAL 1" = 4'

A PLACE TO PLAY
 PHASE 2
 SANTA ROSA, CALIFORNIA
WEST ENTRANCE ROAD IMPROVEMENTS
 PLAN AND PROFILE

DESIGNED BY MRH
 CHECKED BY
 DRAWN BY C.J.P.
 DATE FEB 9 2007
 R.C.E. 43973



CARLILE • MACY
 CIVIL ENGINEERS • URBAN PLANNERS • LAND SURVEYORS • LANDSCAPE ARCHITECTS
 15 THIRD STREET, SANTA ROSA, CA 95401
 TEL (707) 542-6451 FAX (707) 542-5212

DATE FEBRUARY 9, 2007
 JOB NO. 1996063.00
 DRAWING NUMBER 10 OF 31