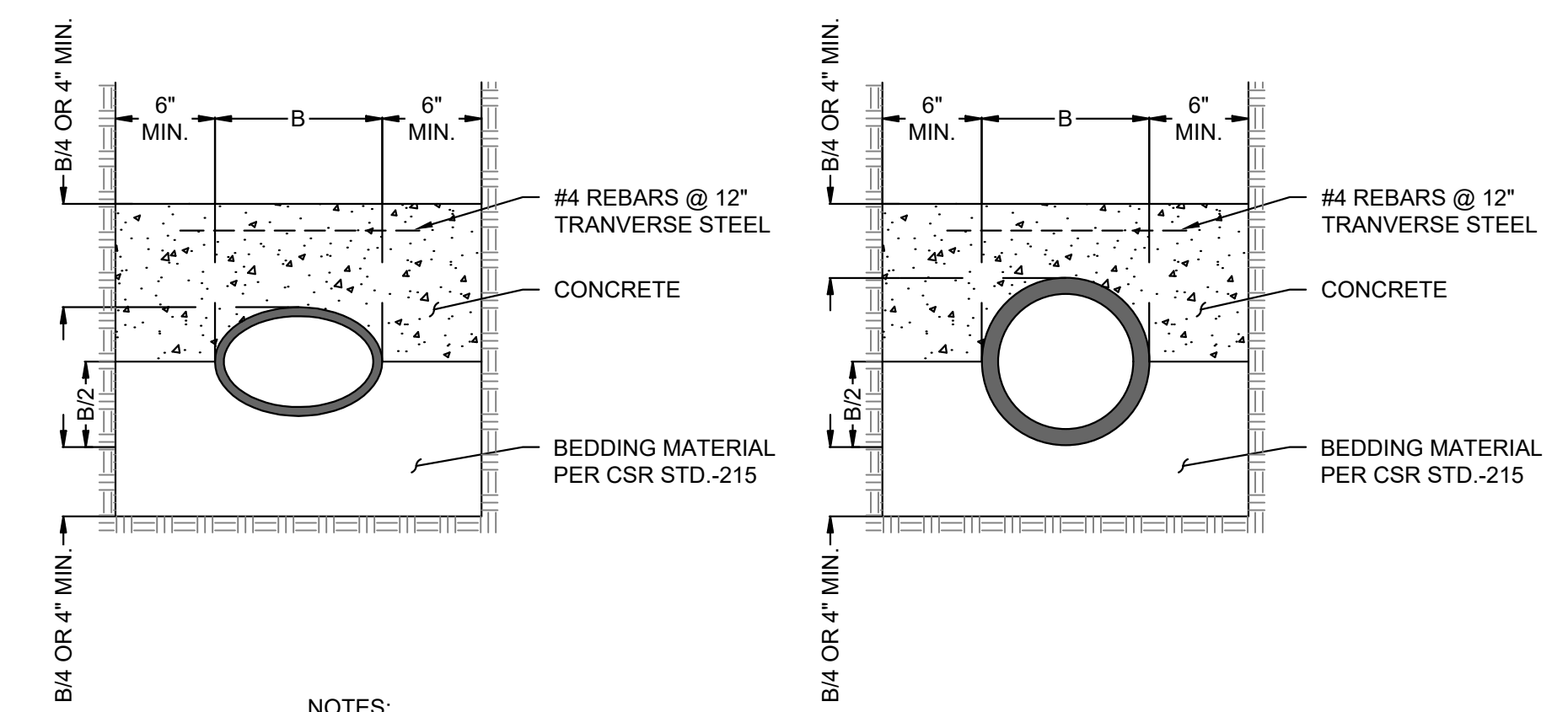
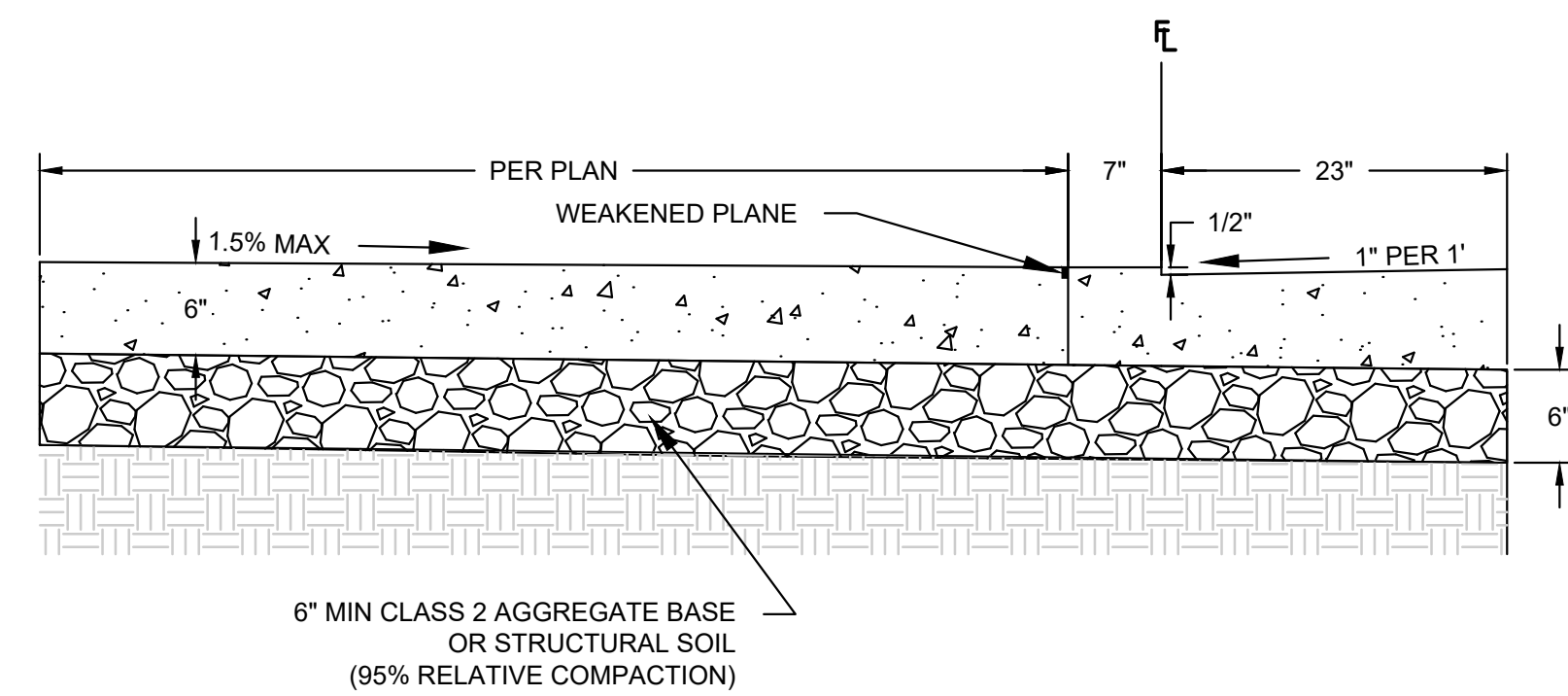
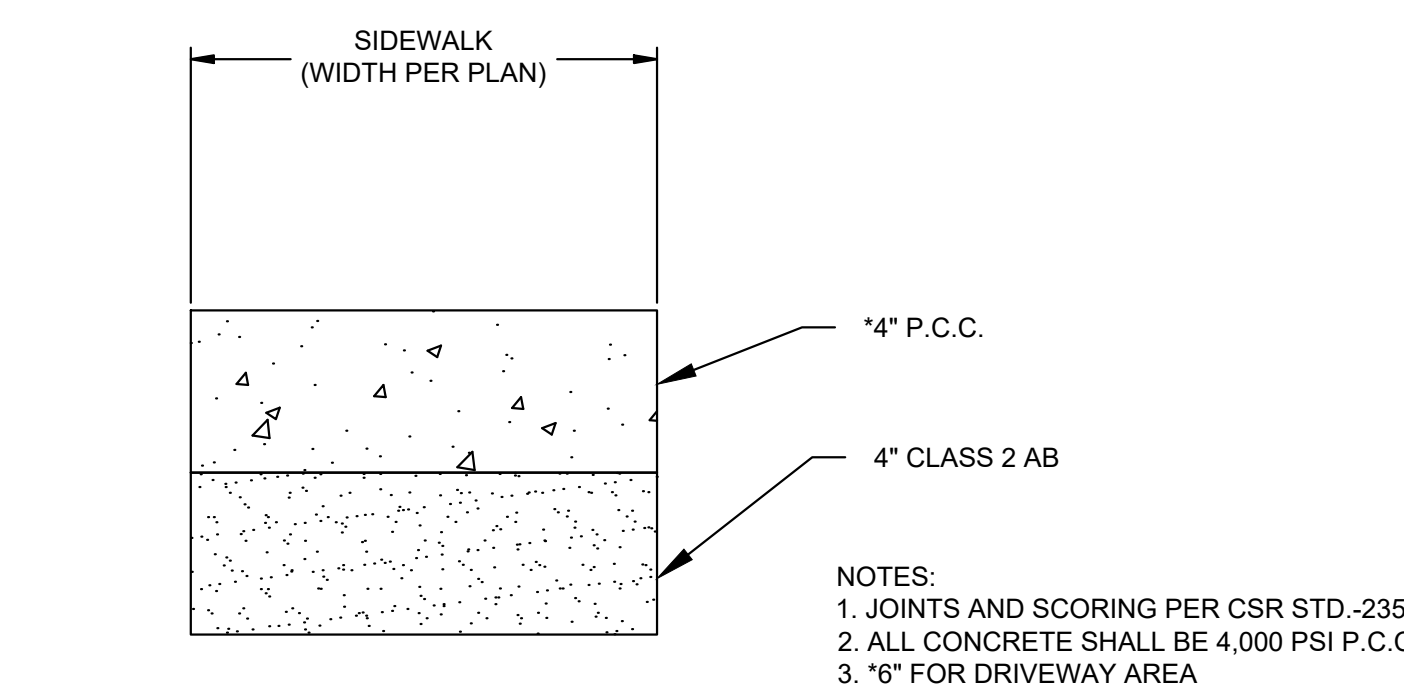


1 PAVEMENT CROSS SECTION

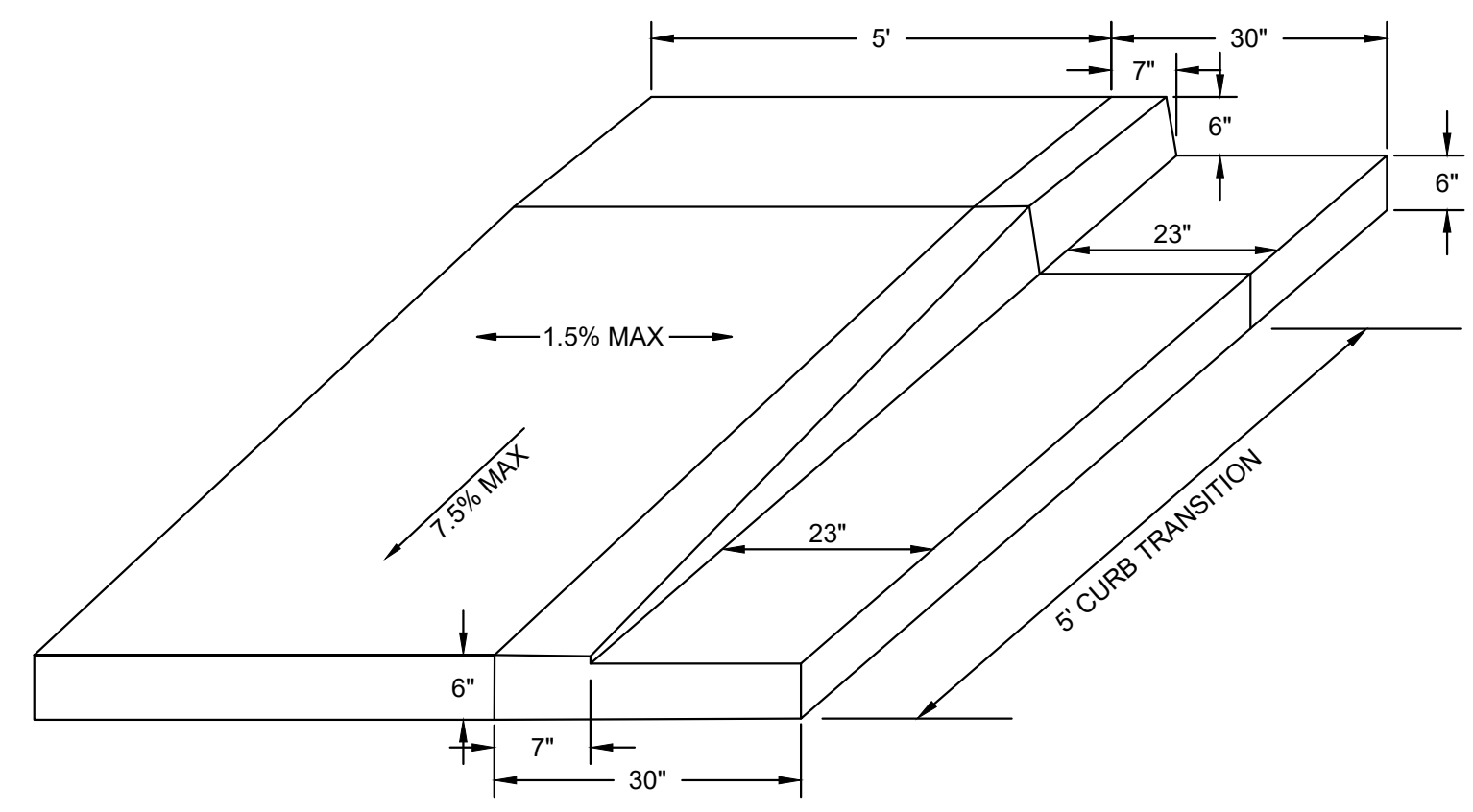


- NOTES:
1. ALL CONCRETE FOR CONCRETE BEDDING CAP SHALL BE 4,000 PSI CONCRETE, PER CITY SECTION 90.
 2. CONCRETE BEDDING CAP REQUIRED WHEN A STORM DRAIN PIPE ENCR OACHES IN A ROADWAY STRUCTURAL SECTION OR IS LESS THAN THREE (3) FEET BELOW FINISH GRADE.
 3. USE REINFORCING STEEL WHEN DESIGNATED ON THE PLANS.
 4. CONCRETE BEDDING CAP SHALL BE PAID FOR AS PART OF THE CONSTRUCTION OF STORM DRAIN.

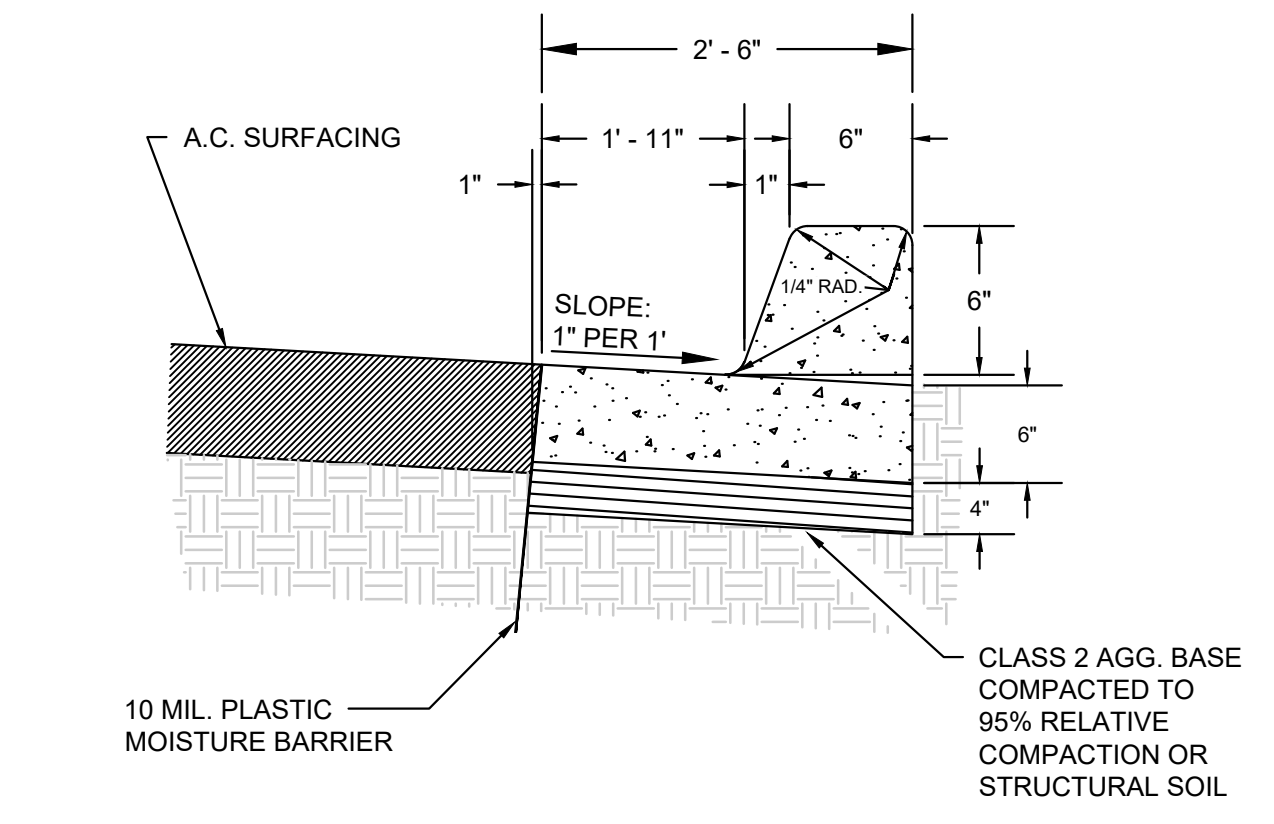
7 CONCRETE BEDDING CAP



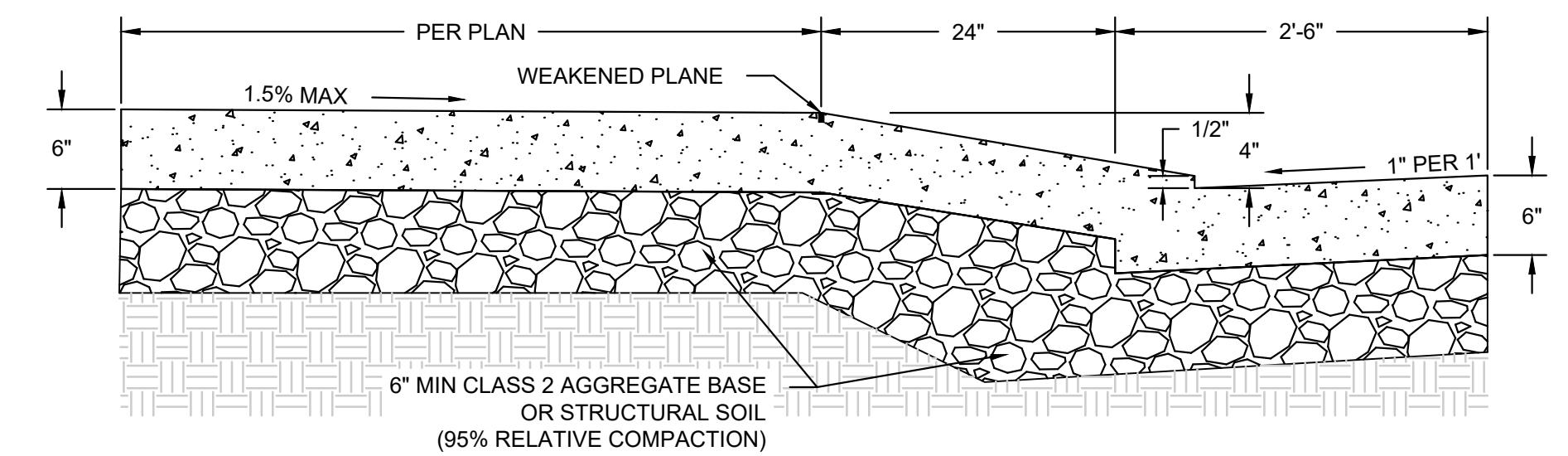
2 SIDEWALK DETAIL



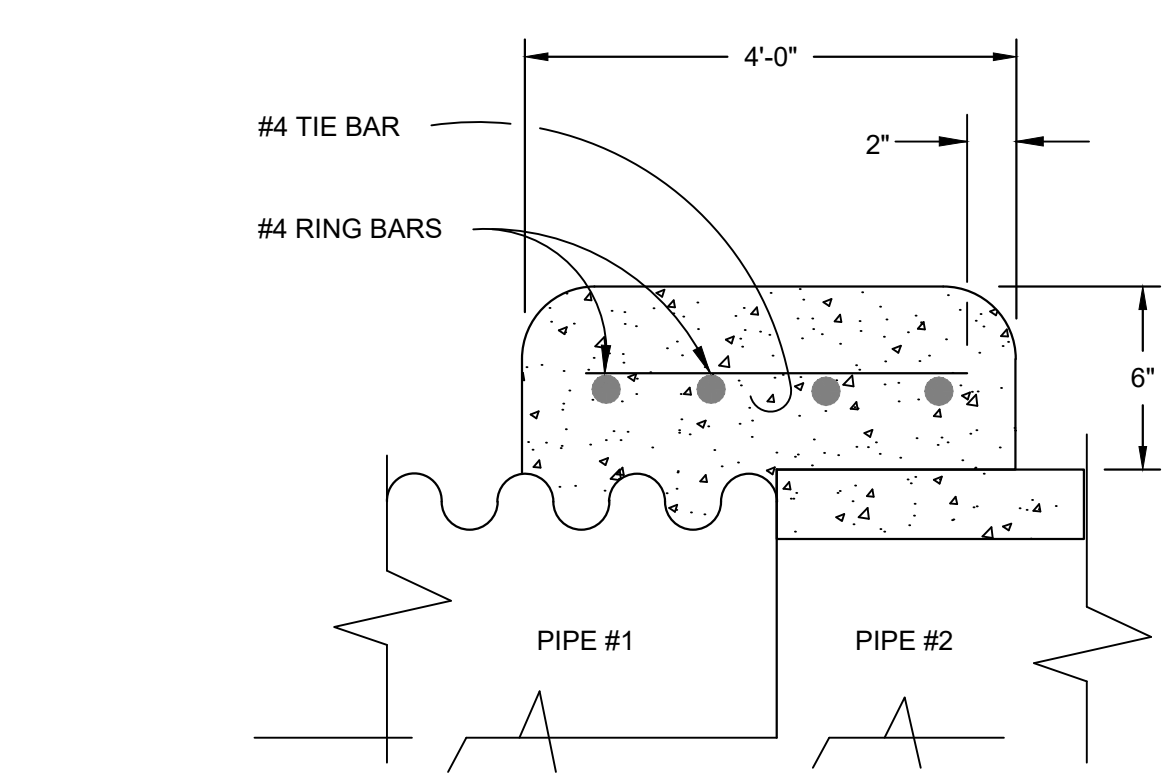
5 FLUSH - DRIVEWAY APPROACH & CURB TRANSITION



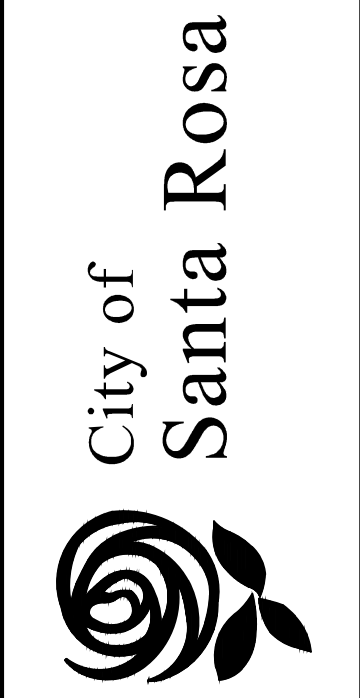
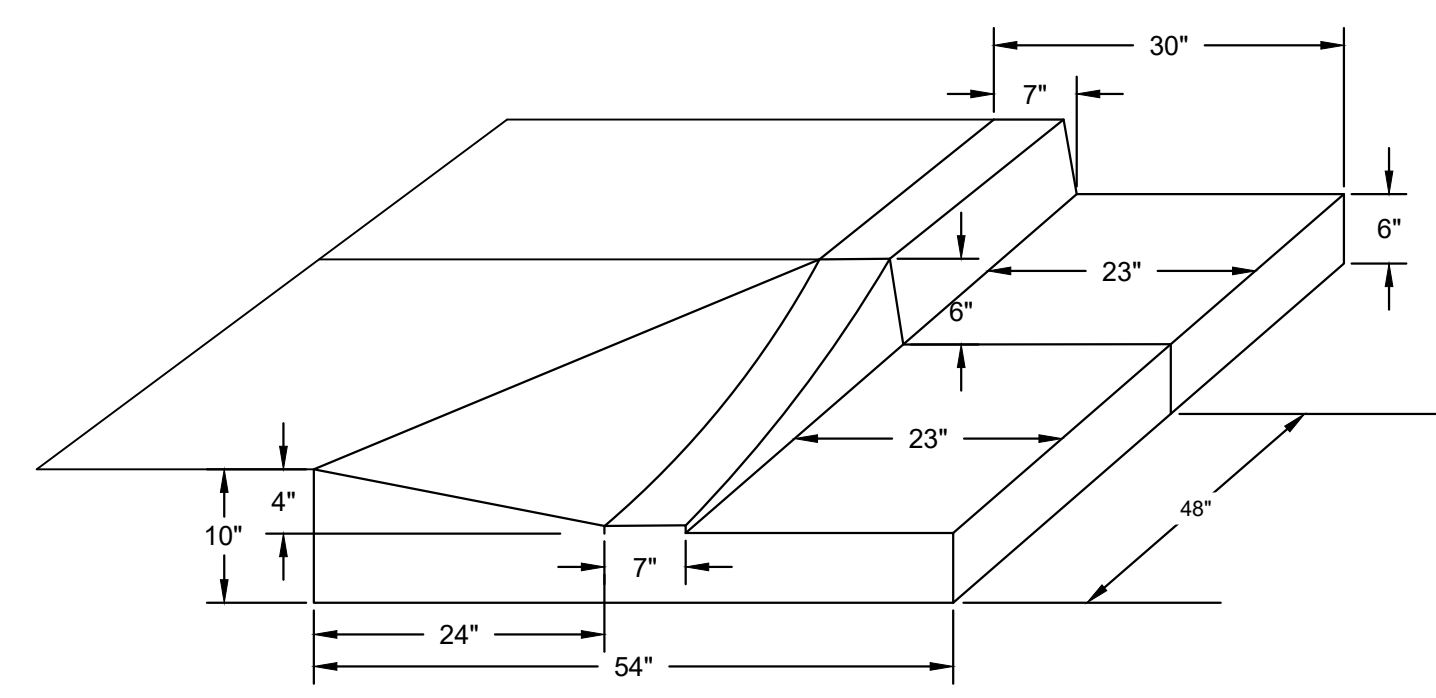
3 STD.-241 - 6" CURB AND GUTTER



6 MODIFIED - CSR STD.-250A



4 STORM DRAIN CONCRETE COLLAR



NO.	DATE	REVISION	BY

CITY OF SANTA ROSA	
PIERSON ST REHABILITATION	
BID SET	
DETAILS	
CHK BY:	GM
DATE:	MARCH 2026
DWN BY:	JW
SCALE:	AS SHOWN
CONTRACT NO.:	C02540
SHEET	4 OF 22
FILE NO.	2025-0031

C0.3



3/4/2026

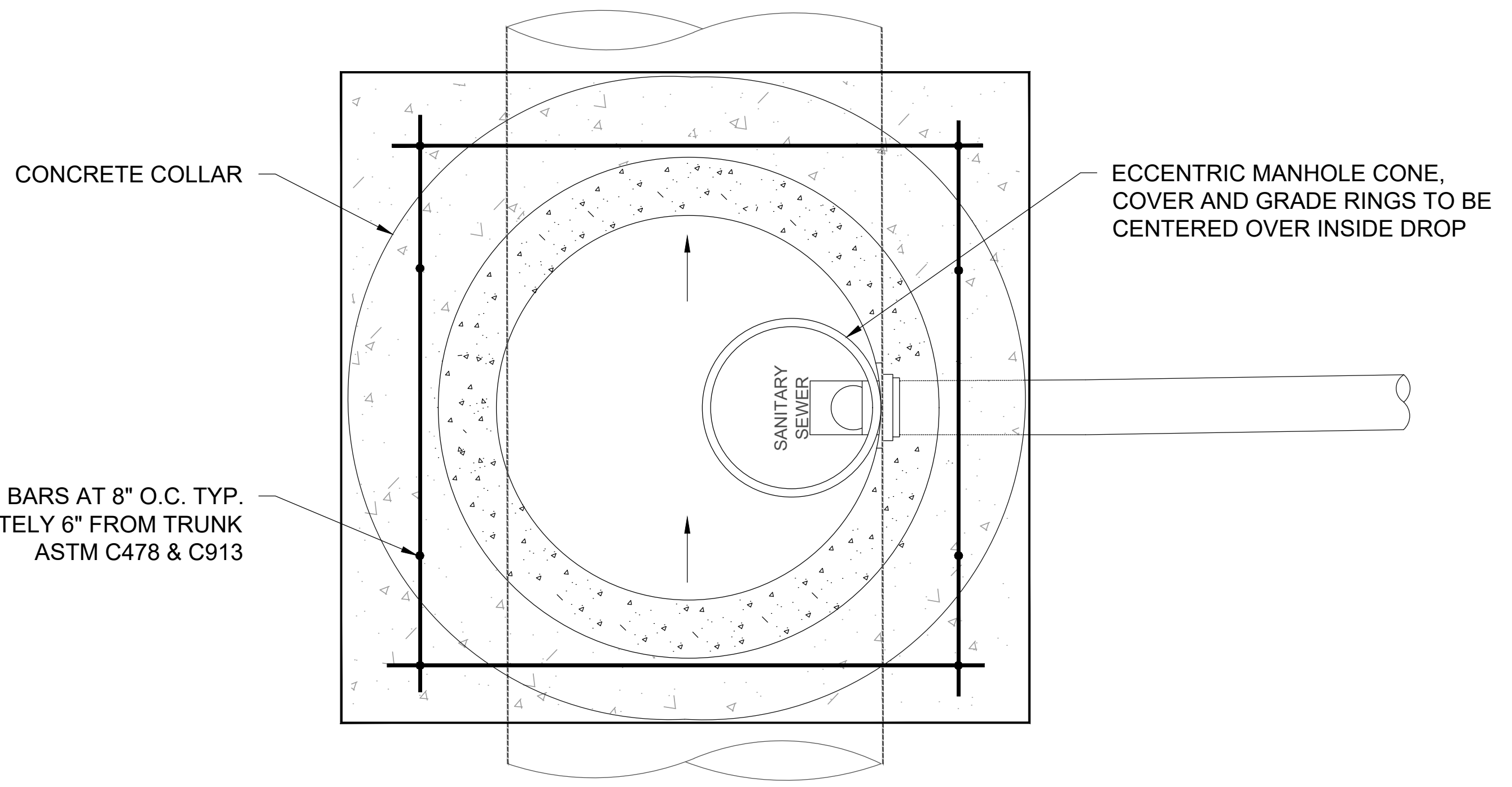
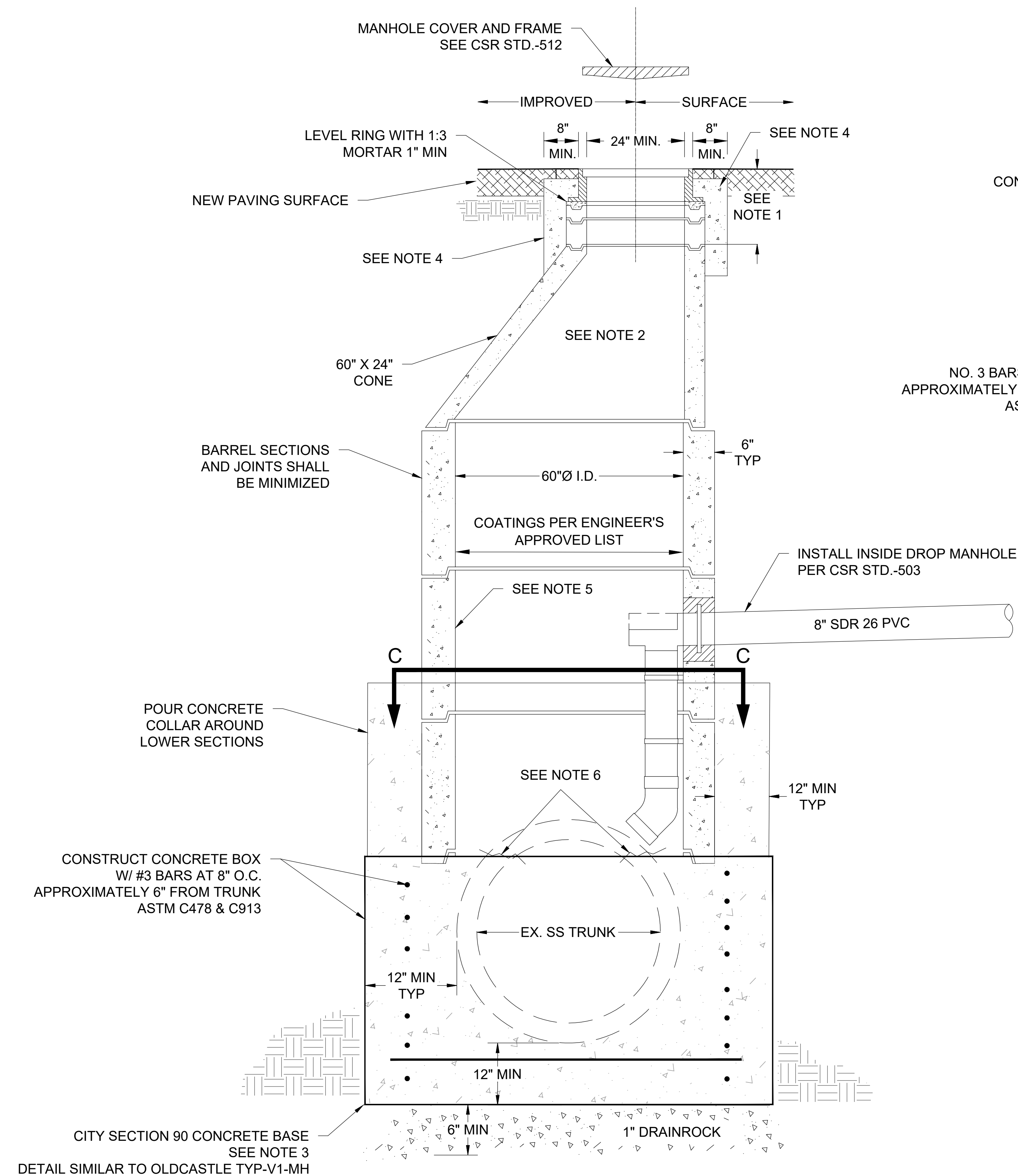


NO.	DATE	REVISION	BY

CITY OF SANTA ROSA
PIERSON ST REHABILITATION
BID SET
DETAILS

CHK BY:	GM
DATE:	MARCH 2026
DWN BY:	JW
SCALE:	NTS
CONTRACT NO.	C02540
SHEET	5 OF 22
FILE NO.	2025-0031

C0.4

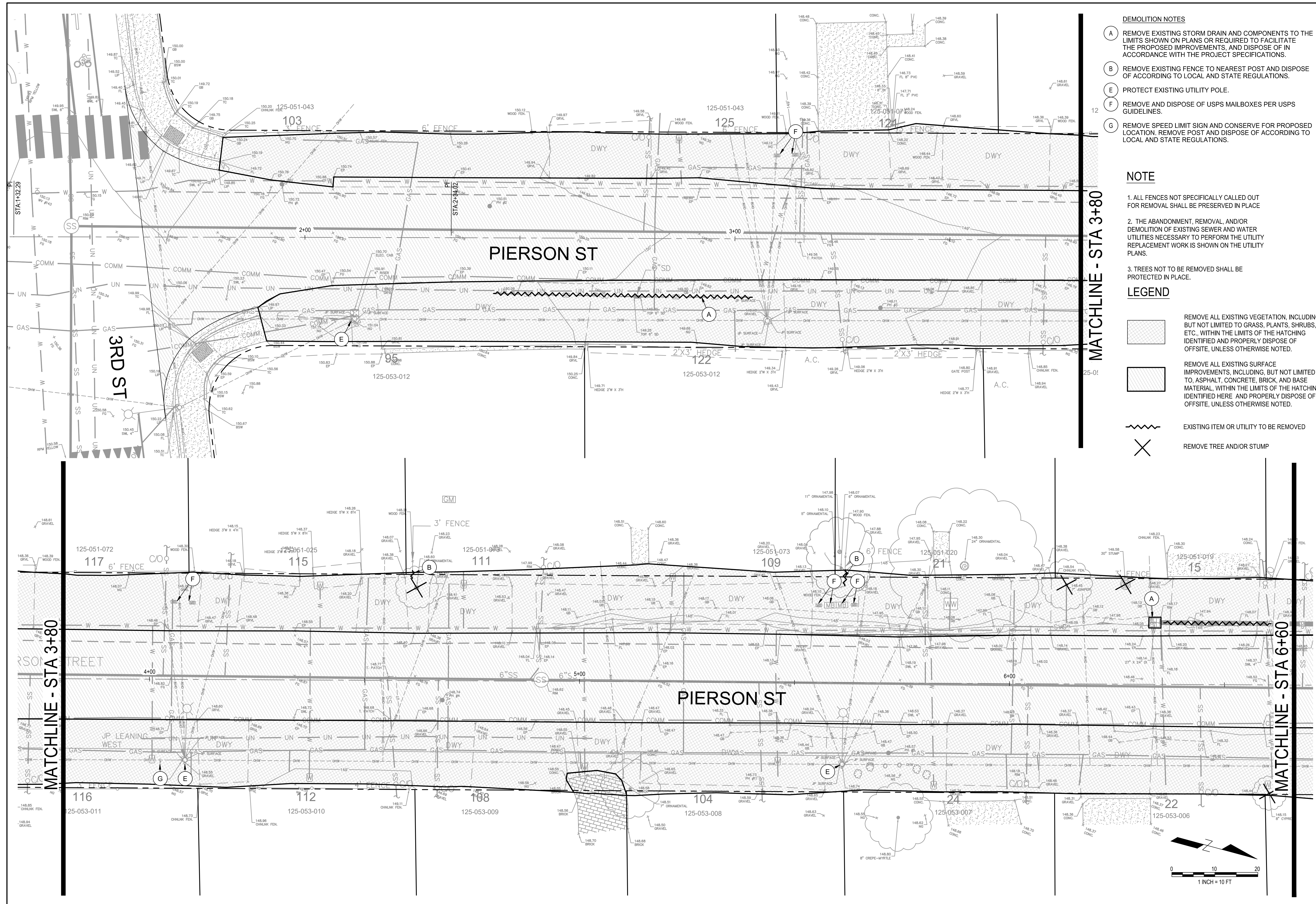


MANHOLE BASE
 CHANNELIZATION PLAN AND LOCATION OF
 ECCENTRIC MANHOLE COVER
 SECTION
C - C
 NTS

NO. 3 BARS AT 8" O.C. TYP.
 APPROXIMATELY 6" FROM TRUNK
 ASTM C478 & C913

- NOTES:
1. MANHOLE SHOWN SHALL BE PER CSR STD.-500.
 2. NEW CONE SECTION (TAPER) SHALL BE ECCENTRIC.
 3. CAST-IN-PLACE BASE TO BE APPROVED BY CITY ENGINEER PER DESIGN SUBMITTAL AND PLACED ON 6" MINIMUM OF 1 INCH DRAIN ROCK INSTALLED AGAINST UNDISTURBED EARTH.
 4. NEW CONCRETE COLLAR SHALL HAVE A COMPRESSIVE STRENGTH OF 4000 PSI OR GREATER AND SET AGAINST PAVEMENT FINISH GRADE CUT SECTION AND Poured ONTO THE CONE SECTION, PER CITY SECTION 90 (OR ASTM C857).
 5. STANDARD MANHOLE BARREL SECTION PER ASTM C478 (SIM. JENSON 7286).
 6. REMOVE TOP OF EXISTING 54" PIPE AFTER CONCRETE BOX (BASE) HAS CURED, AND JUST PRIOR TO INSTALLATION OF BARREL SECTIONS. REMOVAL SHALL BE IN A MANNER THAT DOES NOT DAMAGE REMAINING 54" PIPE, OR ALLOWS DEBRIS TO FALL INTO SEWER FLOW. ALL FINAL SURFACES SHALL BE NEAT AND SMOOTH. METHOD OF REMOVAL SHALL BE SUBMITTED TO ENGINEER PRIOR TO CONSTRUCTION.

SANITARY SEWER MANHOLE DESIGN
 NTS



- DEMOLITION NOTES**
- (A) REMOVE EXISTING STORM DRAIN AND COMPONENTS TO THE LIMITS SHOWN ON PLANS OR REQUIRED TO FACILITATE THE PROPOSED IMPROVEMENTS, AND DISPOSE OF IN ACCORDANCE WITH THE PROJECT SPECIFICATIONS.
 - (B) REMOVE EXISTING FENCE TO NEAREST POST AND DISPOSE OF ACCORDING TO LOCAL AND STATE REGULATIONS.
 - (E) PROTECT EXISTING UTILITY POLE.
 - (F) REMOVE AND DISPOSE OF USPS MAILBOXES PER USPS GUIDELINES.
 - (G) REMOVE SPEED LIMIT SIGN AND CONSERVE FOR PROPOSED LOCATION. REMOVE POST AND DISPOSE OF ACCORDING TO LOCAL AND STATE REGULATIONS.

- NOTE**
1. ALL FENCES NOT SPECIFICALLY CALLED OUT FOR REMOVAL SHALL BE PRESERVED IN PLACE
 2. THE ABANDONMENT, REMOVAL, AND/OR DEMOLITION OF EXISTING SEWER AND WATER UTILITIES NECESSARY TO PERFORM THE UTILITY REPLACEMENT WORK IS SHOWN ON THE UTILITY PLANS.
 3. TREES NOT TO BE REMOVED SHALL BE PROTECTED IN PLACE.

- LEGEND**
- REMOVE ALL EXISTING VEGETATION, INCLUDING BUT NOT LIMITED TO GRASS, PLANTS, SHRUBS, ETC., WITHIN THE LIMITS OF THE HATCHING IDENTIFIED AND PROPERLY DISPOSE OF OFFSITE, UNLESS OTHERWISE NOTED.
 - REMOVE ALL EXISTING SURFACE IMPROVEMENTS, INCLUDING, BUT NOT LIMITED TO, ASPHALT, CONCRETE, BRICK, AND BASE MATERIAL, WITHIN THE LIMITS OF THE HATCHING IDENTIFIED HERE AND PROPERLY DISPOSE OF OFFSITE, UNLESS OTHERWISE NOTED.
 - EXISTING ITEM OR UTILITY TO BE REMOVED
 - REMOVE TREE AND/OR STUMP



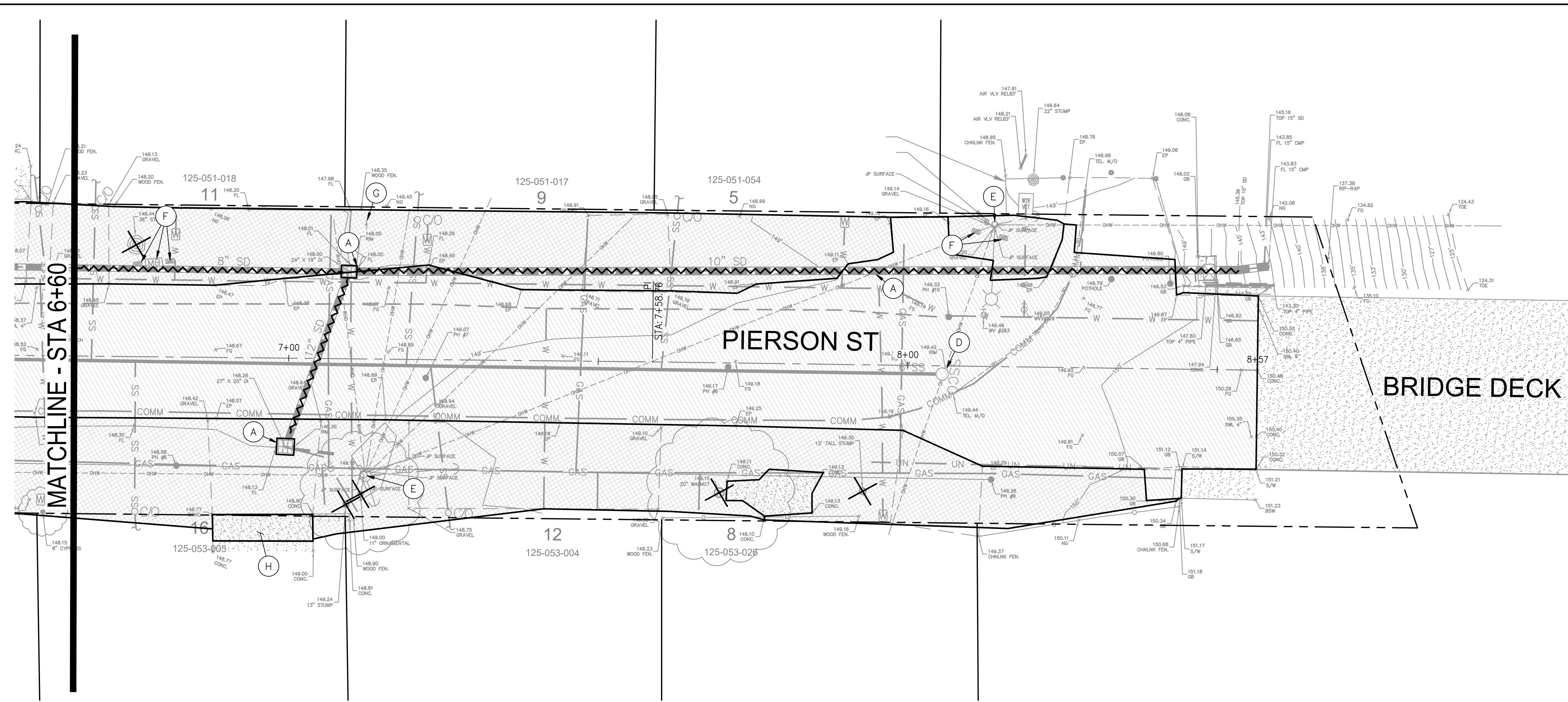
City of
Santa Rosa

NO.	DATE	REVISION	BY

CITY OF SANTA ROSA
**PIERSON ST REHABILITATION
BID SET
DEMOLITION PLAN**

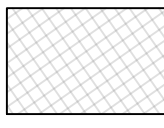
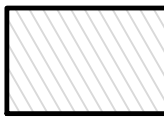


CHK BY: GM
DATE: MARCH 2026
DWN BY: JW
SCALE: AS SHOWN
CONTRACT NO. C02540
SHEET 6 OF 22
FILE NO. 2025-0031

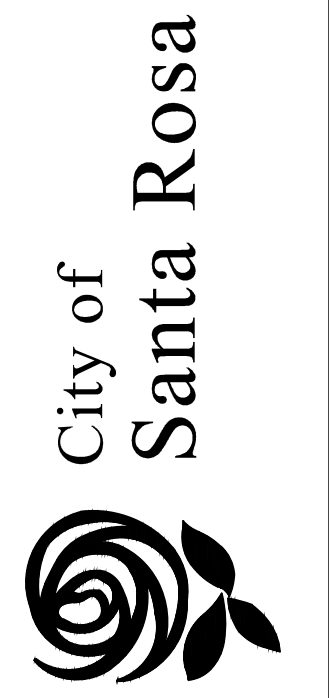
C1.0



- DEMOLITION NOTES**
- (A) REMOVE EXISTING STORM DRAIN AND COMPONENTS TO THE LIMITS SHOWN ON PLANS OR REQUIRED TO FACILITATE THE PROPOSED IMPROVEMENTS, AND DISPOSE OF IN ACCORDANCE WITH THE PROJECT SPECIFICATIONS.
 - (D) REMOVE EXISTING CLEANOUT AND DISPOSE OF ACCORDING TO LOCAL AND STATE REGULATIONS.
 - (E) PROTECT EXISTING UTILITY POLE.
 - (F) REMOVE AND DISPOSE OF USPS MAILBOXES PER USPS GUIDELINES.
 - (G) REMOVE SPEED LIMIT SIGN AND CONSERVE FOR PROPOSED LOCATION. REMOVE POST AND DISPOSE OF ACCORDING TO LOCAL AND STATE REGULATIONS.
 - (H) COORDINATE WITH PROPERTY OWNER AND ENGINEER FOR LIMITS OF CONCRETE REMOVAL.

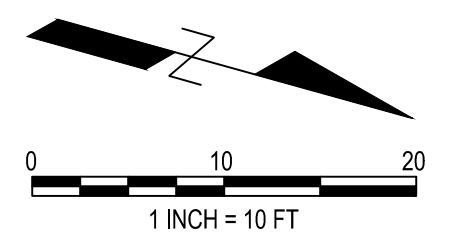
- NOTE**
1. ALL FENCES NOT SPECIFICALLY CALLED OUT FOR REMOVAL SHALL BE PRESERVED IN PLACE
 2. THE ABANDONMENT, REMOVAL, AND/OR DEMOLITION OF EXISTING SEWER AND WATER UTILITIES NECESSARY TO PERFORM THE UTILITY REPLACEMENT WORK IS SHOWN ON THE UTILITY PLANS.
 3. TREES NOT TO BE REMOVED SHALL BE PROTECTED IN PLACE.

- LEGEND**
-  REMOVE ALL EXISTING VEGETATION, INCLUDING BUT NOT LIMITED TO GRASS, PLANTS, SHRUBS, ETC., WITHIN THE LIMITS OF THE HATCHING IDENTIFIED AND PROPERLY DISPOSE OF OFFSITE, UNLESS OTHERWISE NOTED.
 -  REMOVE ALL EXISTING SURFACE IMPROVEMENTS, INCLUDING, BUT NOT LIMITED TO, ASPHALT, CONCRETE, BRICK, AND BASE MATERIAL, WITHIN THE LIMITS OF THE HATCHING IDENTIFIED HERE AND PROPERLY DISPOSE OF OFFSITE, UNLESS OTHERWISE NOTED.
 -  EXISTING ITEM OR UTILITY TO BE REMOVED
 -  REMOVE TREE AND/OR STUMP

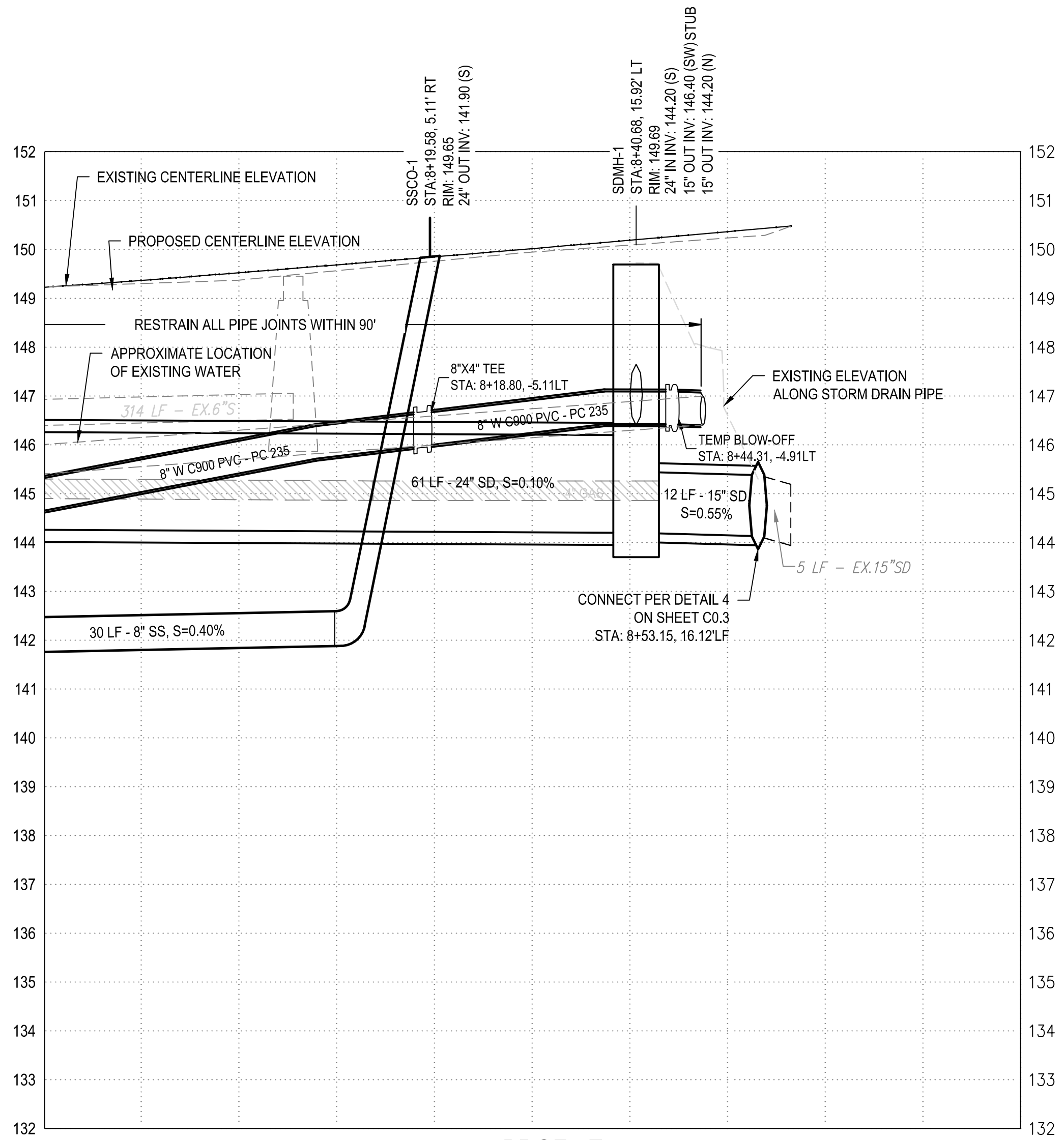


NO.	DATE	REVISION	BY

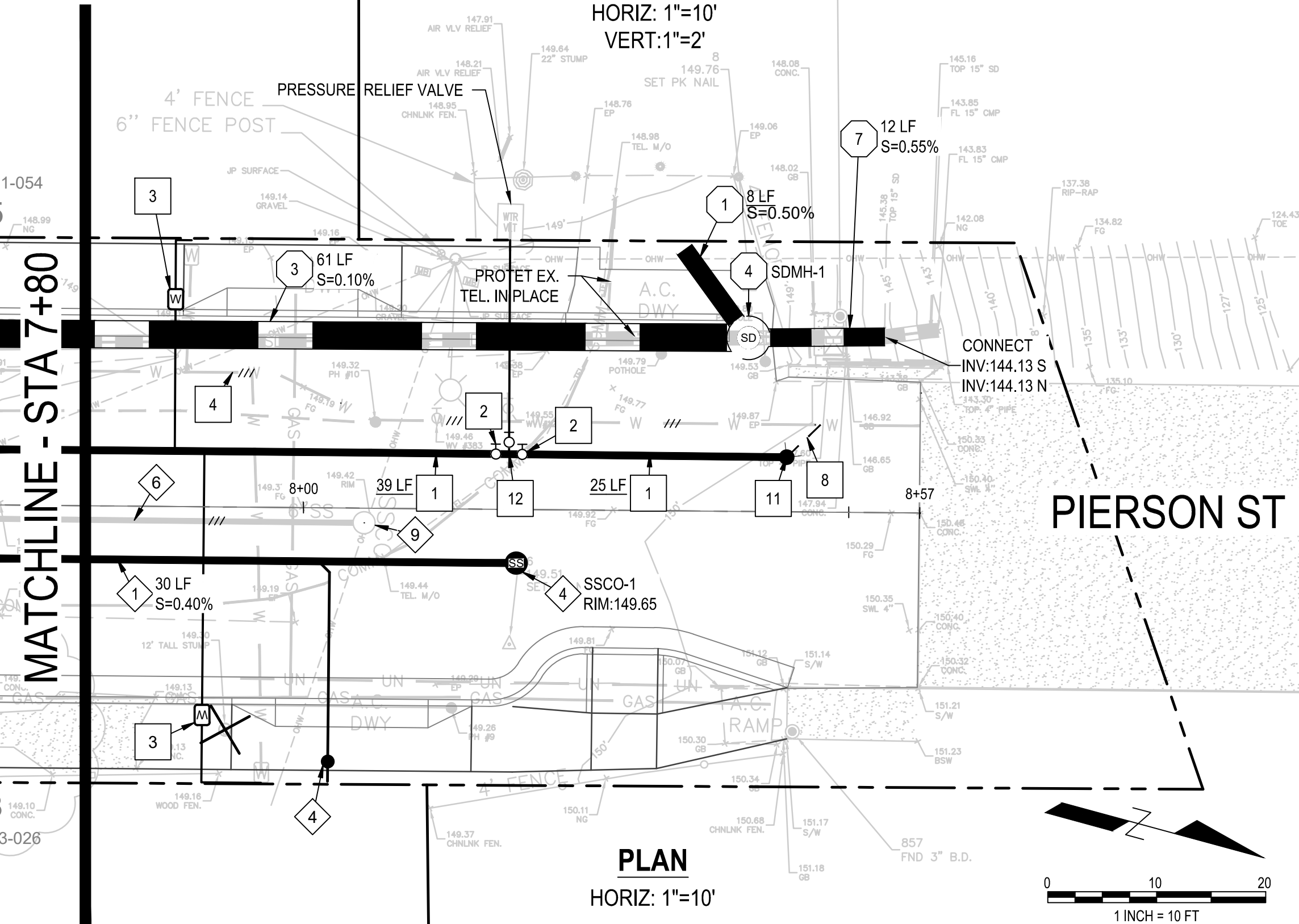
CITY OF SANTA ROSA	
PIERSON ST REHABILITATION BID SET DEMOLITION PLAN	
CHK BY:	GM
DATE:	MARCH 2026
DWN BY:	JW
SCALE:	AS SHOWN
CONTRACT NO.	C02540
SHEET	7 OF 22
FILE NO.	2025-0031



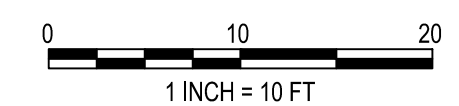
C1.1



PROFILE
HORIZ: 1"=10'
VERT: 1"=2'



PLAN
HORIZ: 1"=10'



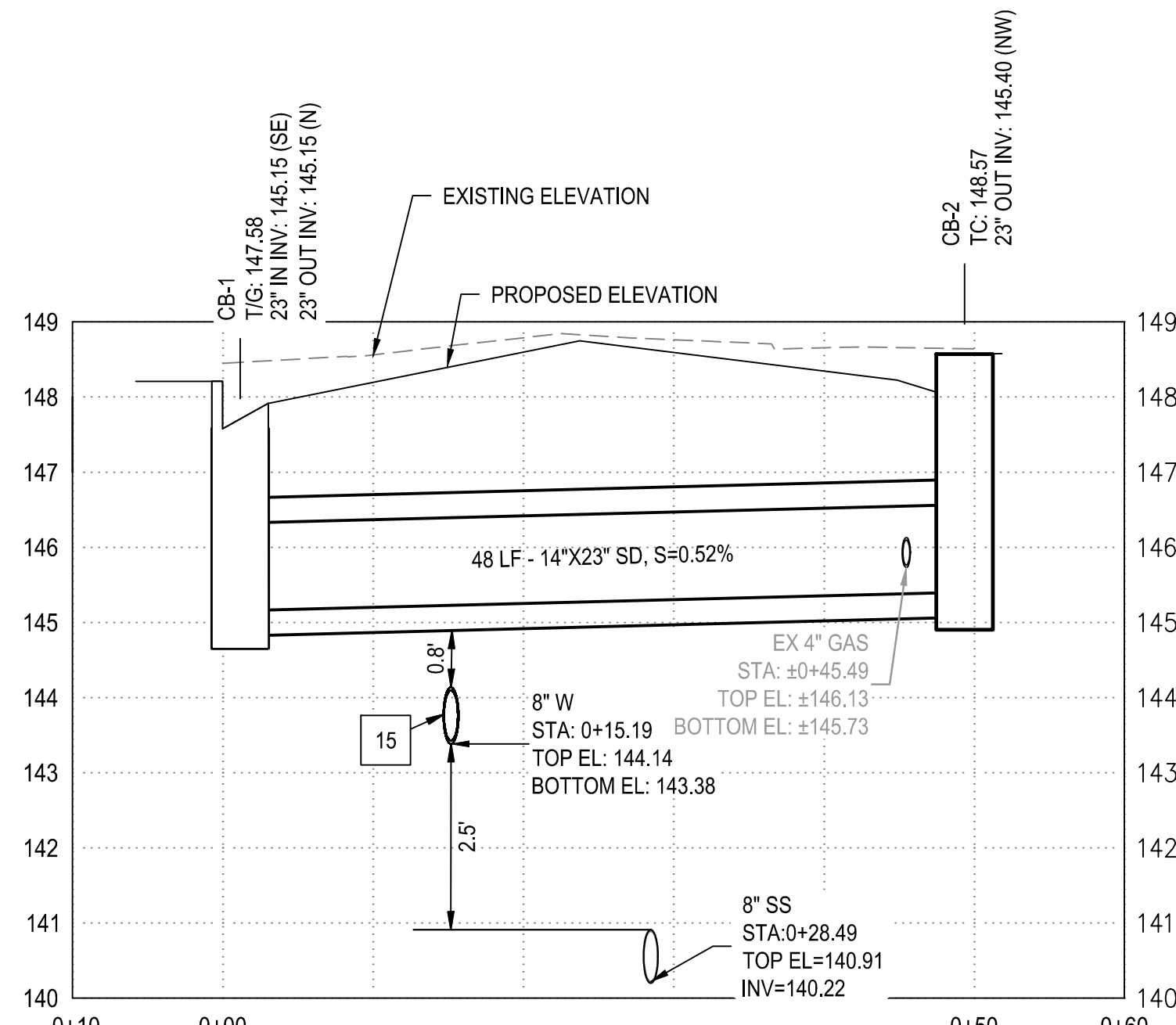
- WATER NOTES**
- 1 INSTALL 8" WATER MAIN PER CSR STDS. 64 LF
 - 2 INSTALL 8" GATE VALVE PER CSR STD.-877. 2 EA
 - 3 INSTALL 1" WATER SERVICE PLUMBED FOR 5/8"X 3/4" METER PER CITY STD.-863A AND CONNECT TO EXISTING WATER SERVICE. 2 EA
 - 4 REMOVE OR ABANDON EXISTING WATER SYSTEM COMPONENTS IN ACCORDANCE WITH SECTION 132-1.17 OF THE CITY STANDARD SPECIFICATIONS. 1 EA
 - 8 AFTER SUCCESSFUL INSTALLATION AND TESTING OF NEW WATER SYSTEM, TIE-IN TO EXISTING 8" MAIN AS SHOWN UNDER CITY INSPECTION. INSTALL FITTINGS AND COUPLINGS AS NECESSARY. 1 EA
 - 11 INSTALL TEMPORARY BLOWOFF PER CSR STD.-859 OR 862 FACILITATE TESTING PER CITY CONSTRUCTION SPECIFICATIONS. 1 EA
 - 12 INSTALL NEW 8"X4" TEE, GATE VALVE, & RECONNECT TO EXISTING PRV PER CSR STD.-862. 1 EA
 - 15 BLANKET WAIVER 4 2 EA

- SEWER NOTES**
- 1 INSTALL 8" SANITARY SEWER MAIN PER CITY STDS. 40 LF
 - 4 INSTALL MAINLINE CLEANOUT PER CSR STD.-505. 1 EA
 - 6 REMOVE AND PROPERLY DISPOSE OF EXISTING SANITARY SEWER MAIN WHERE ENCOUNTERED DURING EXCAVATION FOR NEW SANITARY SEWER MAIN OR WATER MAIN. ABANDON PER CITY STD 507 WHERE EXISTING SEWER EXTENDS BEYOND EXCAVATION LIMITS. 1 EA
 - 9 REMOVE EXISTING MAINLINE CLEANOUT. PLUG SEWER MAIN PER CSR STD. -507. 1 EA
- STORM DRAIN NOTES**
- 1 INSTALL 15" CLASS V REINFORCED CONCRETE PIPE WITH CONCRETE BEDDING CAP PER DETAIL 7 ON SHEET C0.3 44 LF
 - 3 INSTALL 24" CLASS V REINFORCED CONCRETE PIPE WITH CONCRETE BEDDING CAP PER DETAIL 7 ON SHEET C0.3 61 LF
 - 4 INSTALL STORM DRAIN MANHOLE PER CSR STD.-400. ADD 15" STUB OUT. 1 EA
 - 5 INSTALL TYPE II CATCH BASIN 2 EA

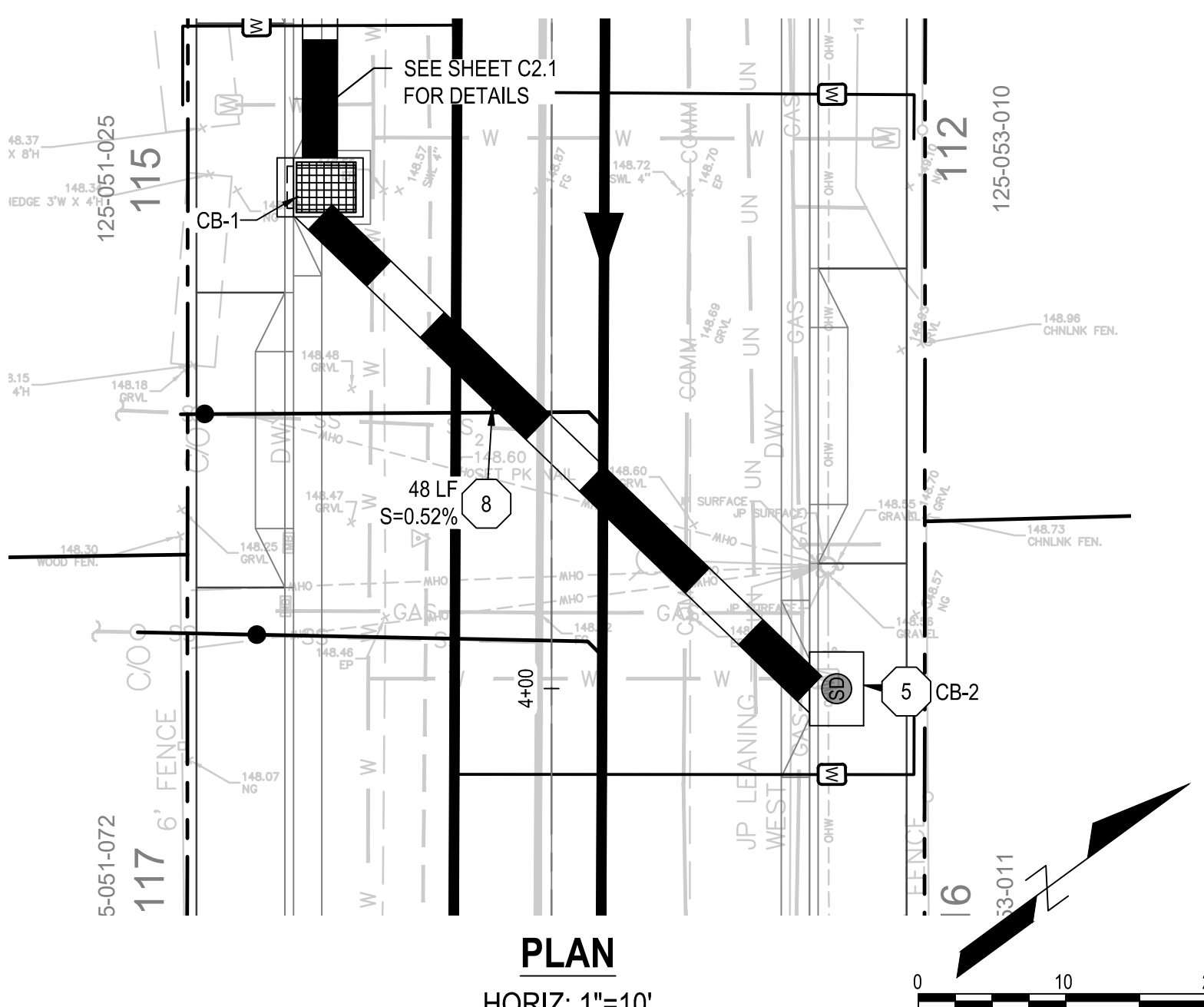
- 7 REPLACE EXISTING 15-INCH CORRUGATED METAL PIPE (CMP) WITH 15-INCH CLASS V REINFORCED CONCRETE PIPE (RCP). ALL WORK SHALL BE PERFORMED OUTSIDE OF THE ORDINARY HIGH WATER MARK. THE EXPOSED 5' OF EXISTING CMP SHALL REMAIN IN PLACE AND UNDISTURBED. NEW RCP SHALL BE INTERNALLY CONNECTED TO THE REMAINING CMP PER DETAIL 4 ON SHEET C0.3. PROTECT EXISTING PAD IN PLACE AND HAND DIGGING IS ONLY PERMITTED INSIDE THE CREEK. 12 LF
- 8 INSTALL 14X23" HORIZONTAL ELLIPTICAL RCP PER ASTM C507 - SPECIAL DESIGN MIN D-LOAD = 3,000 LB/FT/FT (CLASS V EQUIVALENT) WITH REINFORCED CONCRETE CAP PER DETAIL 7 ON SHEET C0.3. 48 LF

NOTE

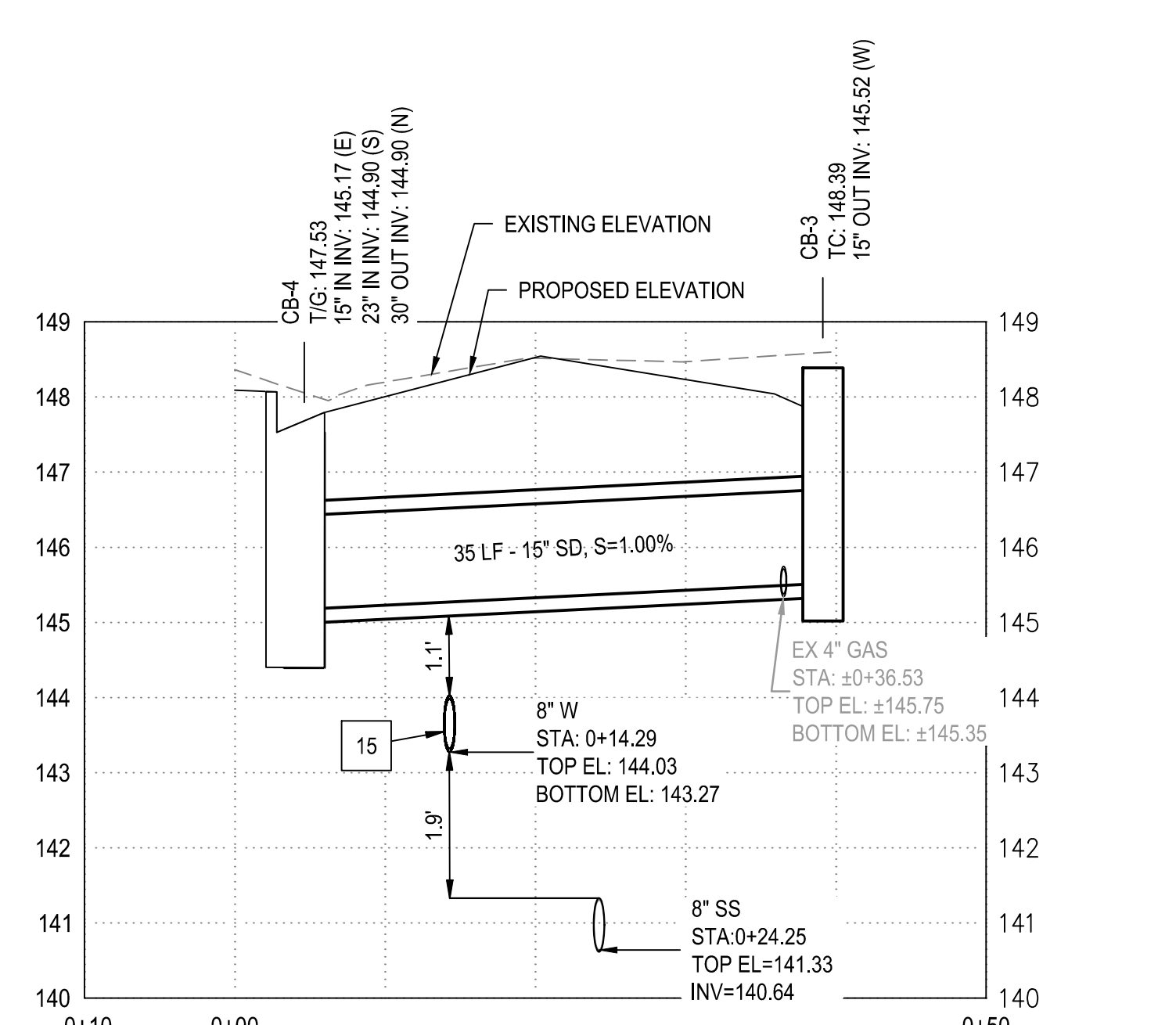
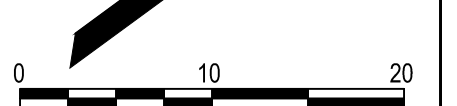
1. WATER MAIN TO BE ROPED PER MANUFACTURER SPECIFICATION.
2. EXISTING GAS MAIN AND SERVICE LATERALS SHOWN ARE APPROXIMATE AND FOR REFERENCE ONLY. THE GAS MAIN AND ASSOCIATED SERVICE LATERALS WILL BE RELOCATED AND REPLACED BY PG&E. CONTRACTOR SHALL COORDINATE SEQUENCING OF WORK TO ACCOMMODATE GAS UTILITY RELOCATION PRIOR TO PAVING OPERATIONS.
3. PERFORM UNDERGROUND UTILITY LOCATING PRIOR TO EXCAVATION. PROVIDE RESULTS TO ENGINEER FOR REVIEW.



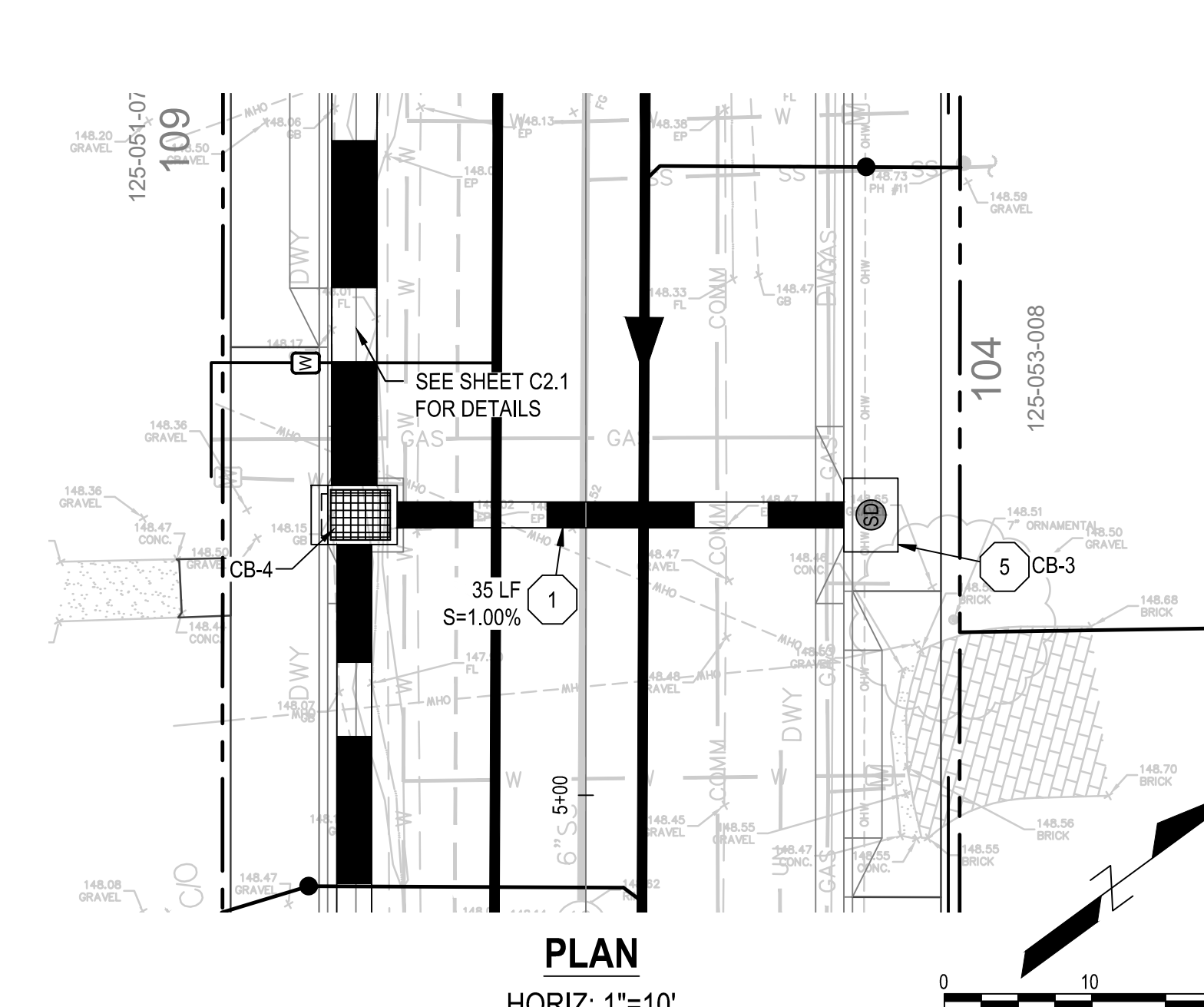
PROFILE
HORIZ: 1"=10'
VERT: 1"=2'



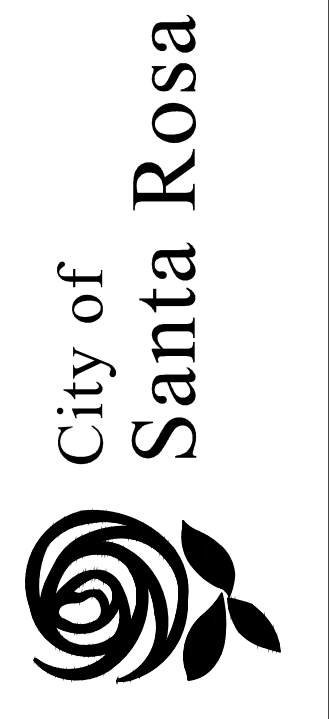
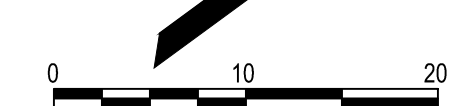
PLAN
HORIZ: 1"=10'



PROFILE
HORIZ: 1"=10'
VERT: 1"=2'



PLAN
HORIZ: 1"=10'



NO.	DATE	REVISION	BY

CITY OF SANTA ROSA
PIERSON ST REHABILITATION
BID SET
UTILITY PLAN AND PROFILE

CHK BY:	GM
DATE:	MARCH 2026
DWN BY:	JW
SCALE:	AS SHOWN
CONTRACT NO.:	C02540
SHEET	11 OF 22
FILE NO.	2025-0031

C2.3

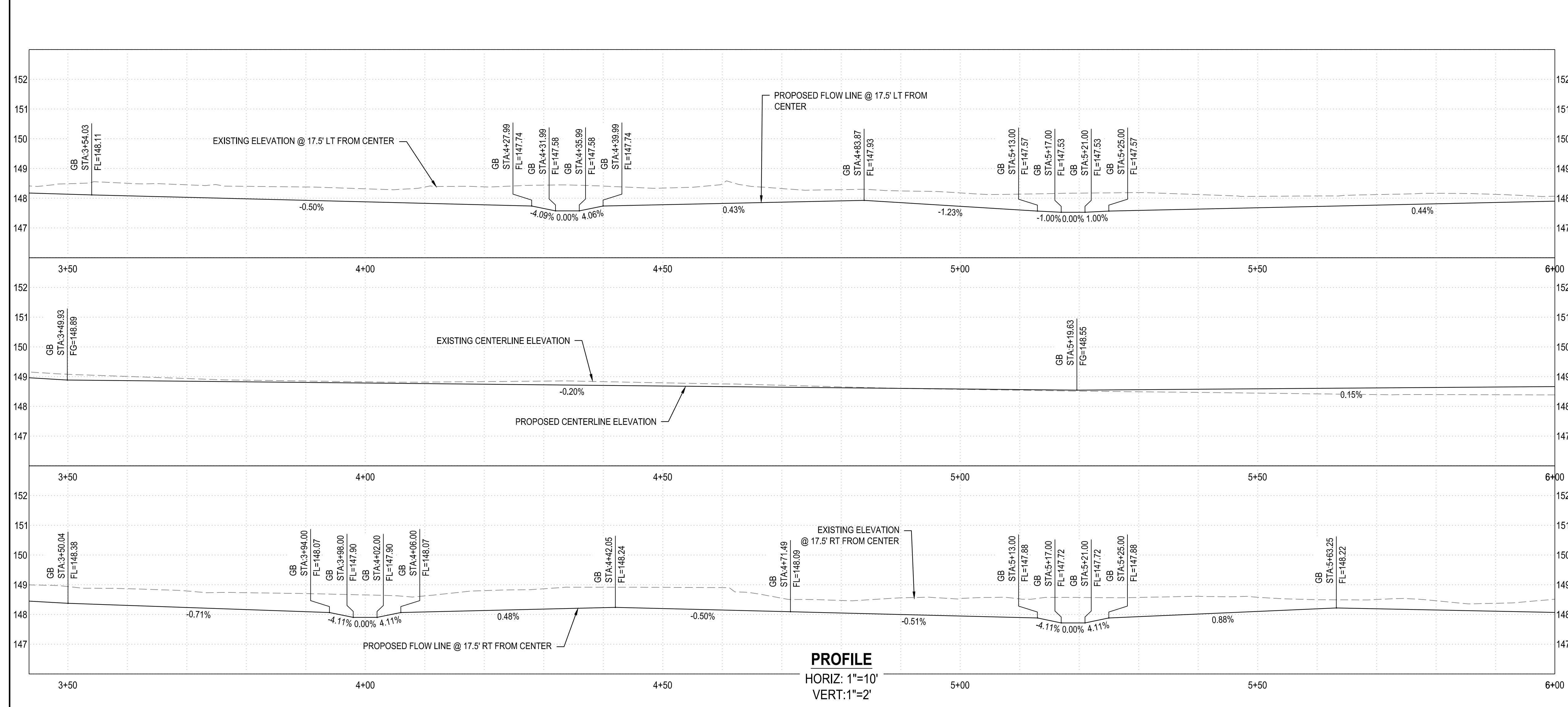


3/4/2026



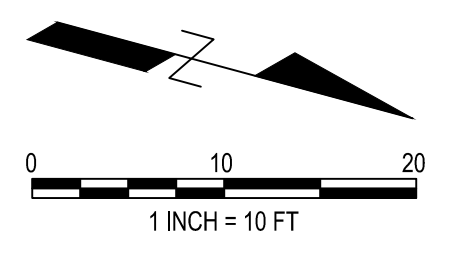
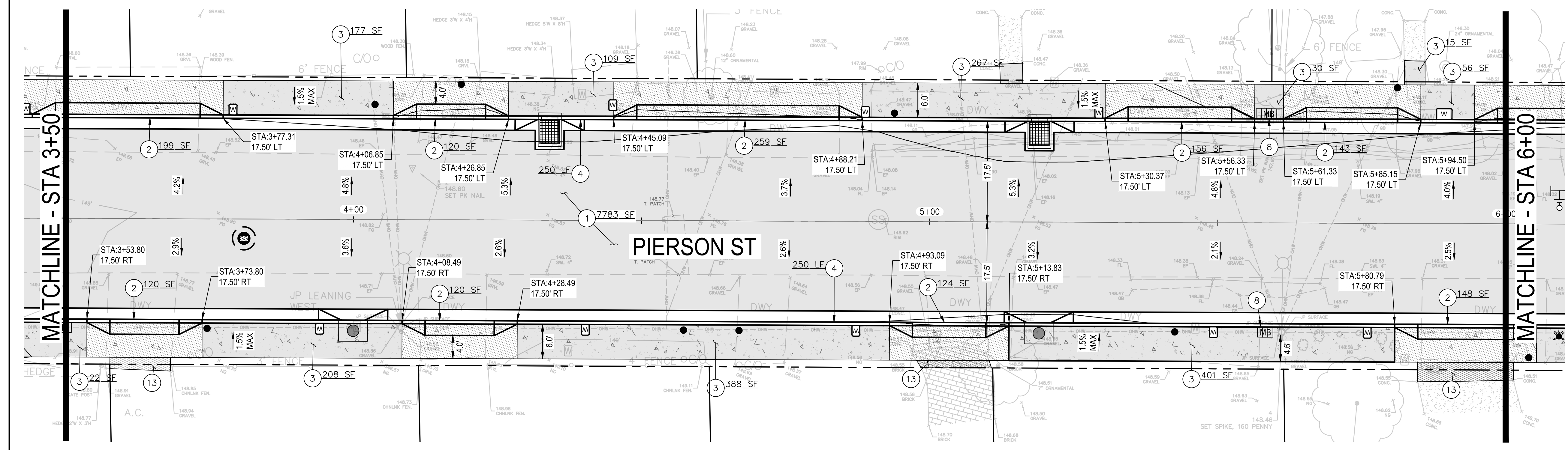
PAVING NOTES

1	RECONSTRUCT PAVEMENT PER DETAIL 1 ON SHEET C0.3.	7783 SF
2	CONSTRUCT MODIFIED DRIVEWAY APPROACH PER DETAIL 6 ON SHEET C0.3. WIDTH PER PLAN.	1389 SF
3	CONSTRUCT SIDEWALK PER DETAIL 2 ON SHEET C0.3.	1673 SF
4	CONSTRUCT CURB AND GUTTER PER DETAIL 3 ON SHEET C0.3.	500 LF
8	USPS GANG MAILBOX PER SECTION 101 OF THE TECHNICAL SPECIFICATIONS.	2 EA
13	DRIVEWAY CONFORM	3 EA



LEGEND

	LIMITS OF CONCRETE SIDEWALK
	LIMITS OF DRIVEWAY
	LIMITS OF ROAD RECONSTRUCTION



NO.	DATE	REVISION	BY

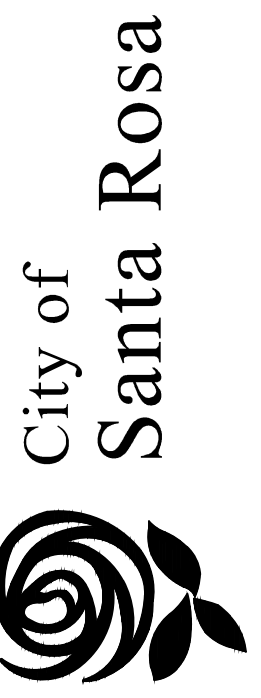
CITY OF SANTA ROSA
**PIERSON ST REHABILITATION
BID SET
SURFACING PLAN**

CHK BY:	GM
DATE:	MARCH 2026
DWN BY:	JW
SCALE:	AS SHOWN
CONTRACT NO.	C02540
SHEET	14 OF 22
FILE NO.	2025-0031

C3.1



3/4/2026

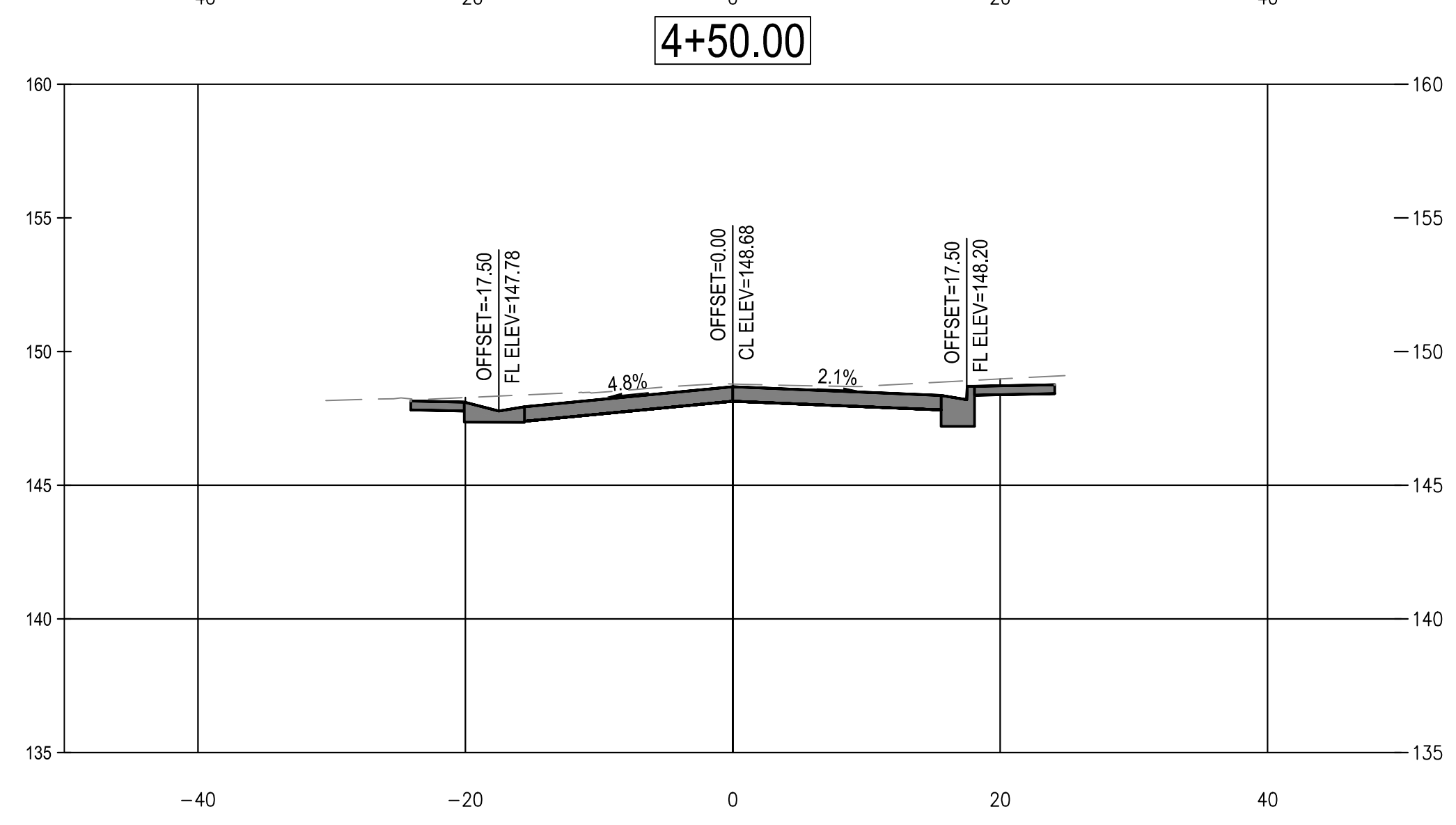
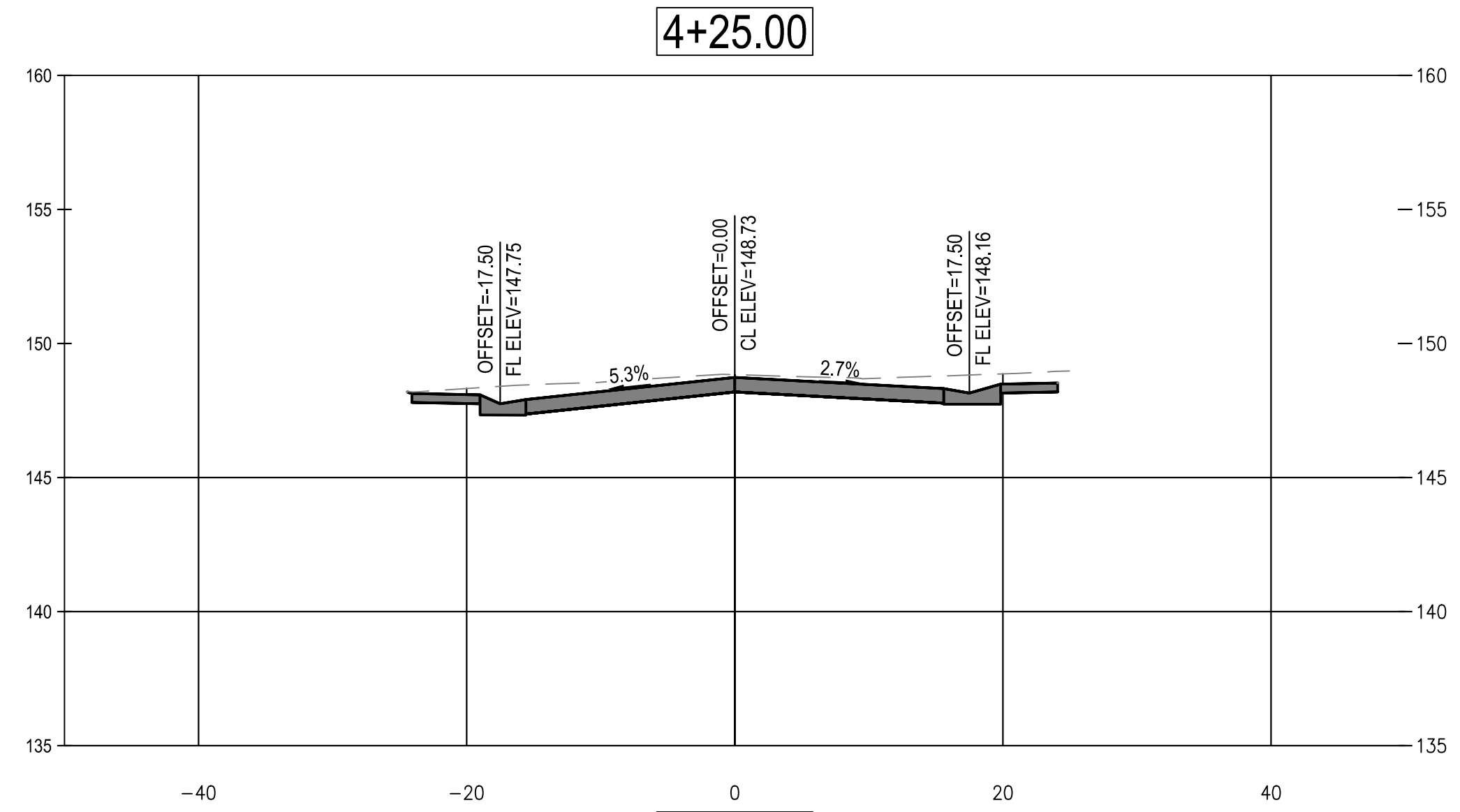
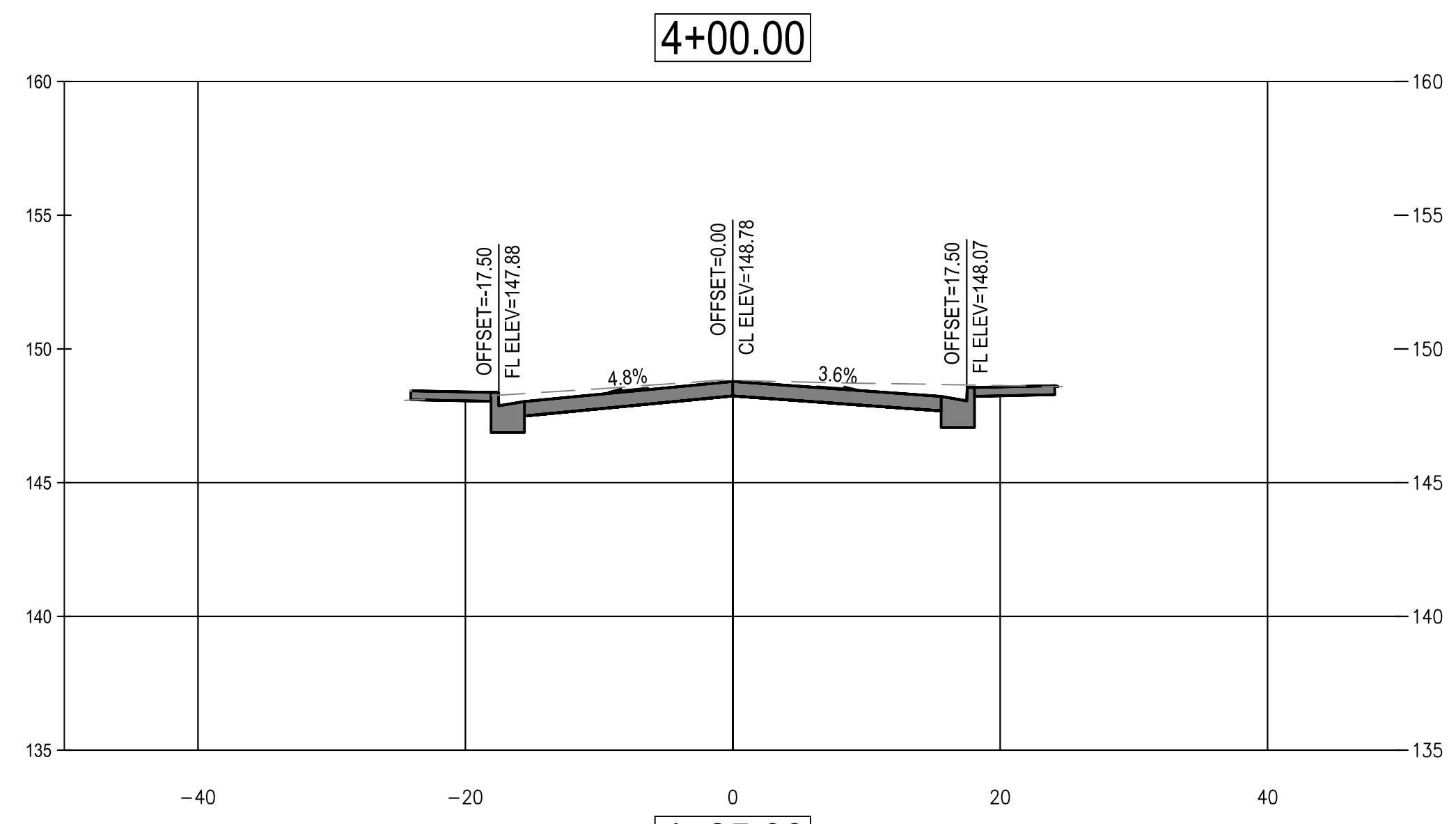
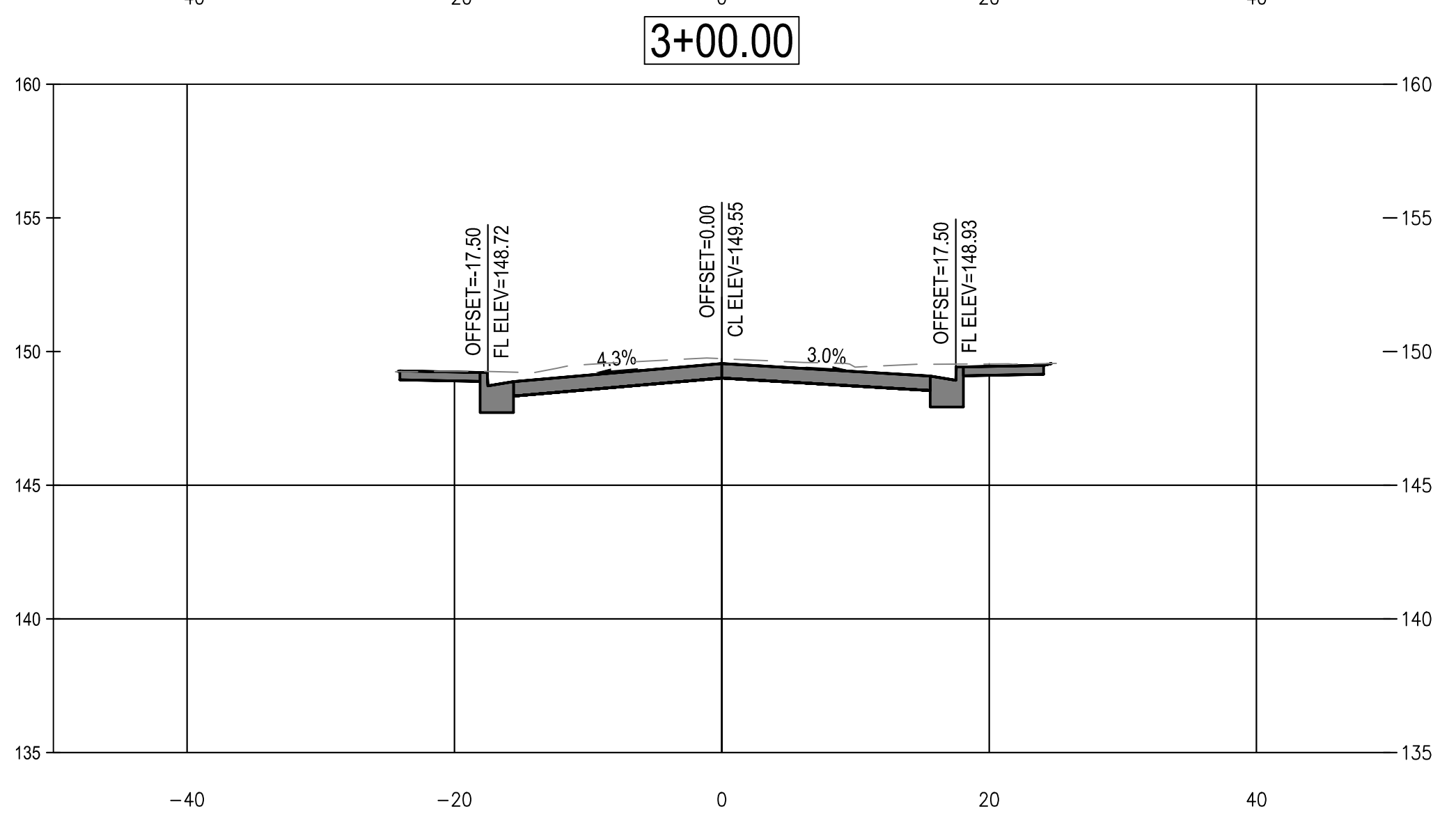
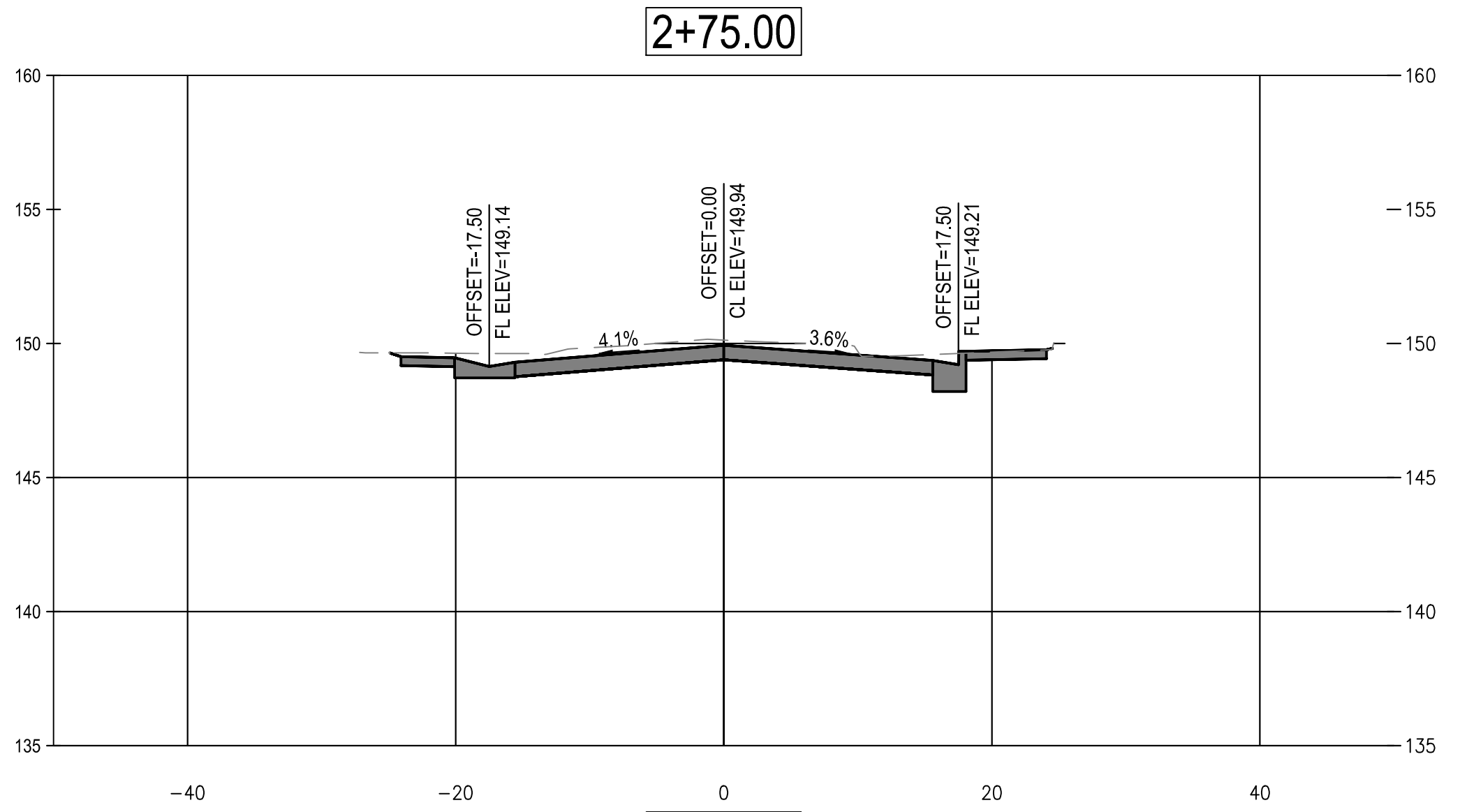
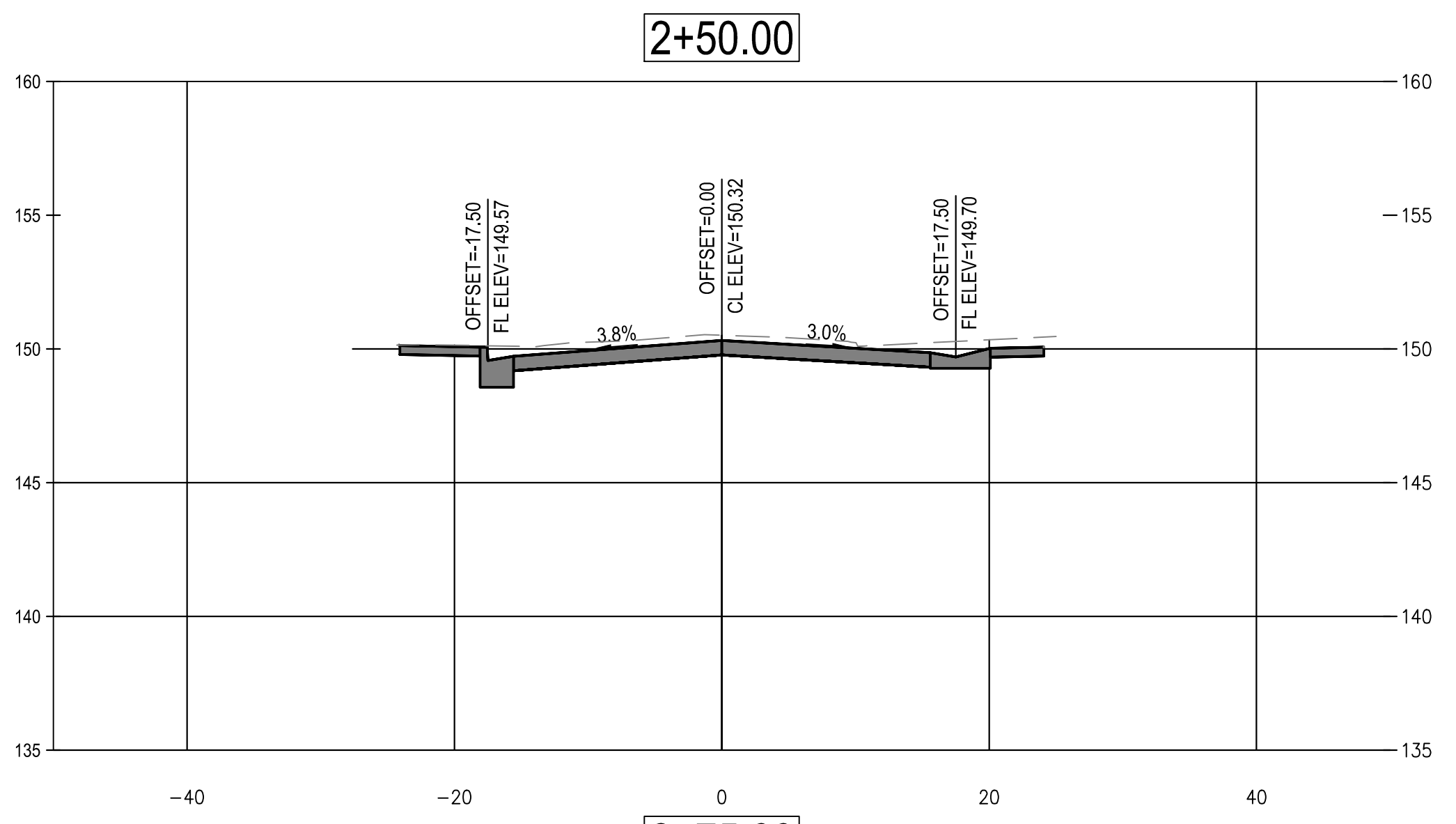


NO.	DATE	REVISION	BY

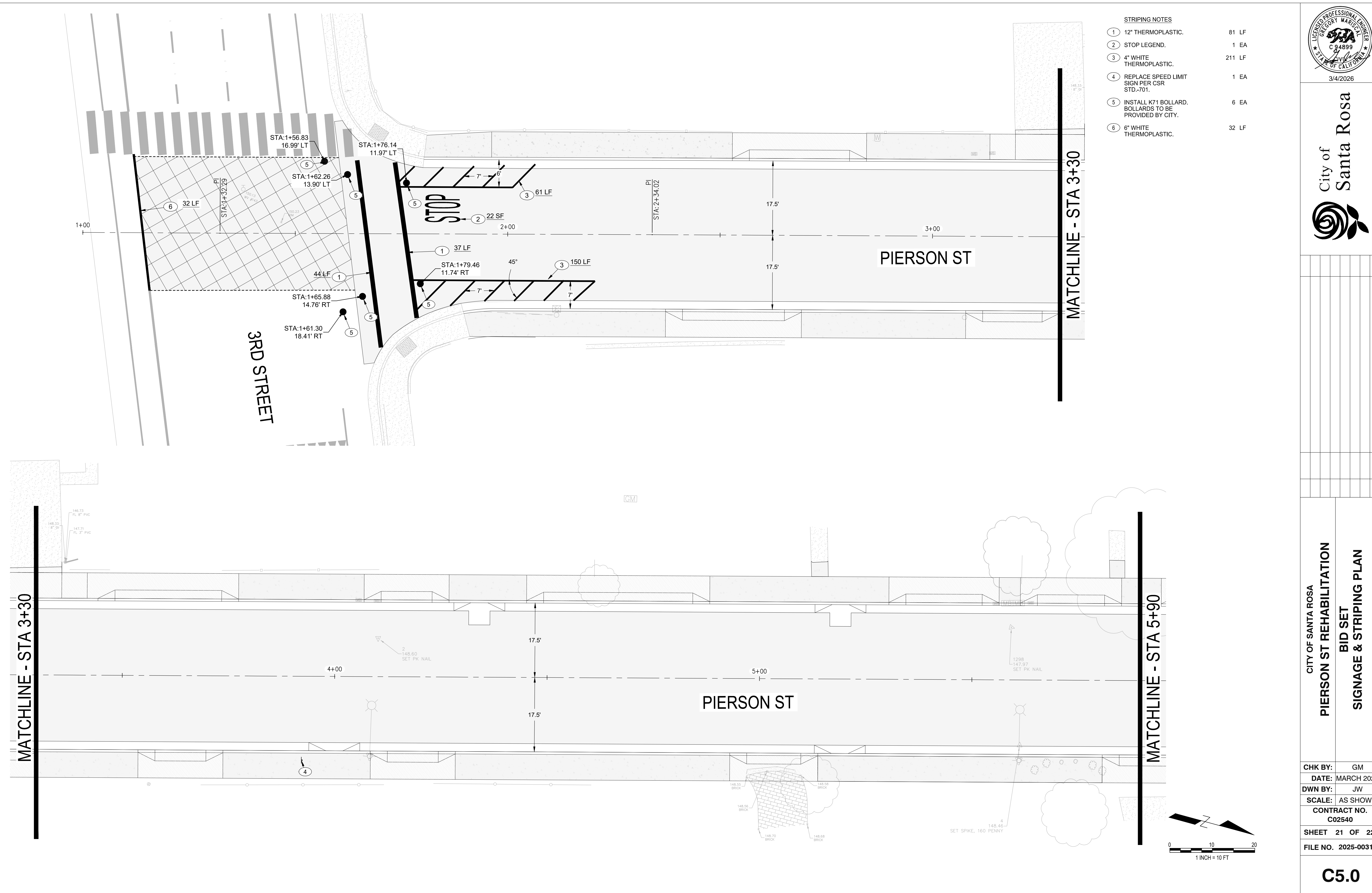
CITY OF SANTA ROSA
**PIERSON ST REHABILITATION
 BID SET
 CROSS SECTIONS**

CHK BY:	GM
DATE:	MARCH 2026
DWN BY:	JW
SCALE:	AS SHOWN
CONTRACT NO.	C02540
SHEET	17 OF 22
FILE NO.	2025-0031

C4.1

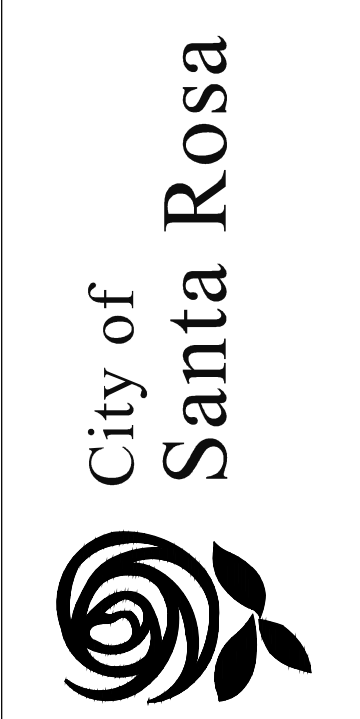


CROSS SECTION SCALES
 HORIZ: 1" = 10'
 VERT: 1" = 5'



STRIPING NOTES

①	12" THERMOPLASTIC.	81 LF
②	STOP LEGEND.	1 EA
③	4" WHITE THERMOPLASTIC.	211 LF
④	REPLACE SPEED LIMIT SIGN PER CSR STD.-701.	1 EA
⑤	INSTALL K71 BOLLARD. BOLLARDS TO BE PROVIDED BY CITY.	6 EA
⑥	6" WHITE THERMOPLASTIC.	32 LF

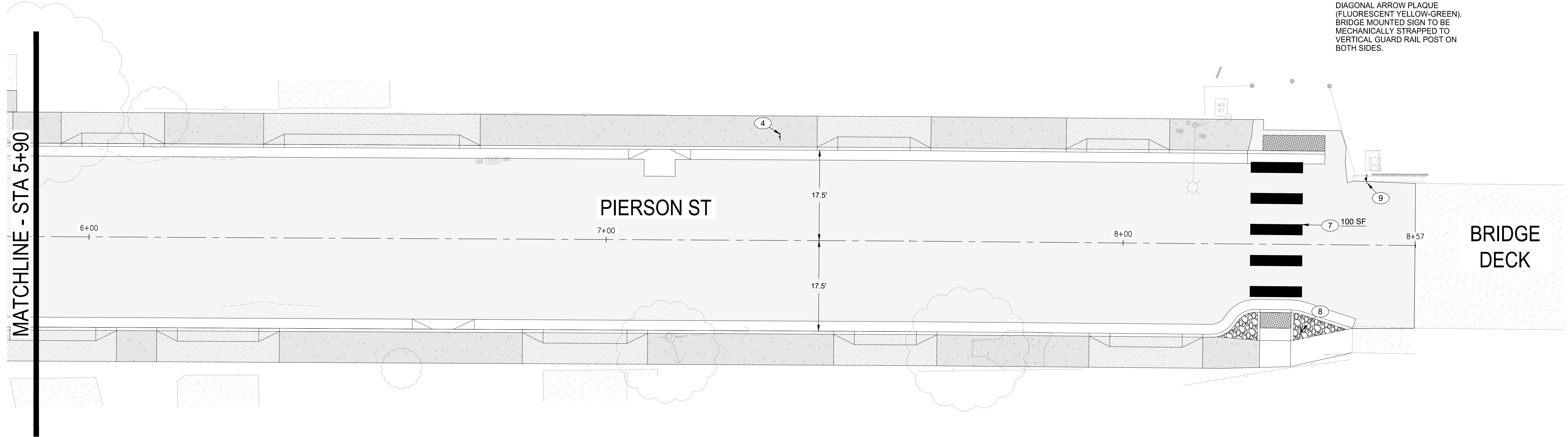


NO.	DATE	REVISION	BY

CITY OF SANTA ROSA
**PIERSON ST REHABILITATION
 BID SET
 SIGNAGE & STRIPING PLAN**

CHK BY: GM
 DATE: MARCH 2026
 DWN BY: JW
 SCALE: AS SHOWN
 CONTRACT NO. C02540
 SHEET 21 OF 22
 FILE NO. 2025-0031

C5.0



STRIPING NOTES

- ④ REPLACE SPEED LIMIT SIGN PER CSR STD.-701. 1 EA
- ⑦ INSTALL 10'X2' WHITE CONTINENTAL STYLE CROSSWALK WITH MINIMUM 2' SPACING ALIGNED BETWEEN WHEEL TRACKS OF EACH LANE. 100 SF
- ⑧ INSTALL MUTCD W11-15P BICYCLE/PEDESTRIAN WARNING SIGN WITH W11-15P-PL "TRAIL X-ING" PLAQUE AND W16-7P DIAGONAL ARROW PLAQUE (FLUORESCENT YELLOW-GREEN) ON NEW POLE ON BOTH SIDES. 1 EA
- ⑨ INSTALL MUTCD W11-15P BICYCLE/PEDESTRIAN WARNING SIGN WITH W11-15P-PL "TRAIL X-ING" PLAQUE AND W16-7P DIAGONAL ARROW PLAQUE (FLUORESCENT YELLOW-GREEN), BRIDGE MOUNTED SIGN TO BE MECHANICALLY STRAPPED TO VERTICAL GUARD RAIL POST ON BOTH SIDES. 1 EA



MATCHLINE - STA 5+90

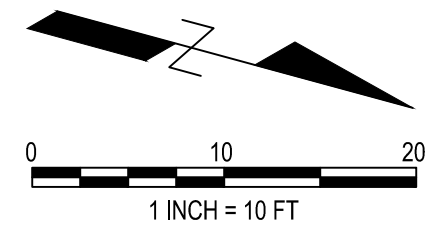
PIERSON ST

BRIDGE DECK

NO.	DATE	REVISION	BY

CITY OF SANTA ROSA
**PIERSON ST REHABILITATION
 BID SET
 SIGNAGE & STRIPING PLAN**

CHK BY:	GM
DATE:	MARCH 2026
DWN BY:	JW
SCALE:	AS SHOWN
CONTRACT NO.	C02540
SHEET	22 OF 22
FILE NO.	2025-0031



C5.1