



February 21, 2020

PACIFIC AVE RECONSTRUCTION - HUMBOLDT ST TO MONTECITO AVE

Dear Residents:

The City of Santa Rosa is finalizing construction plans to reconstruct Pacific Avenue between Humboldt Street and Montecito Avenue. The project will also include:

- Curb ramps will be reconstructed at all intersections to meet current accessibility standards. The owners of these locations will be notified specifically if fences are expected to be relocated in the project.
- Replacement of short sections of sewer main as well as a long section of the water main.
- Replacement of water services and hydrants
- Drainage improvements
- Rectangular Rapid Flashing Beacon (RRFB) systems at Pacific Avenue & King Street, Pacific Avenue & Elizabeth Way/Spring Street and Pacific Avenue & Beaver Street intersections.
- Video Detection System at Humboldt Street, North Street and McDonald Avenue.
- Tree removal with stump grinding. The owners of the expected locations will be notified specifically.

The project is anticipated to take 8 to 9 months, with an estimated start date of Summer 2020. This project is funded by SB1 the Road Repair and Accountability Act. (see reverse for Project Limits).

Completion of this project is vital to the integrity of our community infrastructure. Some of the benefits this project will bring to your neighborhood include:

- Curb ramp replacement: meeting current Americans with Disabilities (ADA) requirements
- Replacing nonductile water main material with ductile water mains: better able to withstand high earthquake loading due to its proximity to an active fault line.
- Full reconstruction of road to improve usability of the roadway surface
- RRFB systems to improve pedestrian visibility crossing at King St., Beaver St. and Elizabeth Way/Spring Street
- Video detection to improve traffic signal responses for vehicle and bicycle users at Humboldt Street, North Street and McDonald Avenue intersections.
- Replacing outdated storm drain systems reaching their life expectancy.

Though temporary impacts to your neighborhood are inevitable, our goal is to improve our community infrastructure without creating any more disturbance than necessary. The Contractor will be advised that daily and weekly activities such as mail delivery and garbage service must

Capital Projects Engineering • 69 Stony Circle • Santa Rosa, CA 95401

Phone: (707) 543-4280 • Fax: (707) 543-4281

www.srcity.org

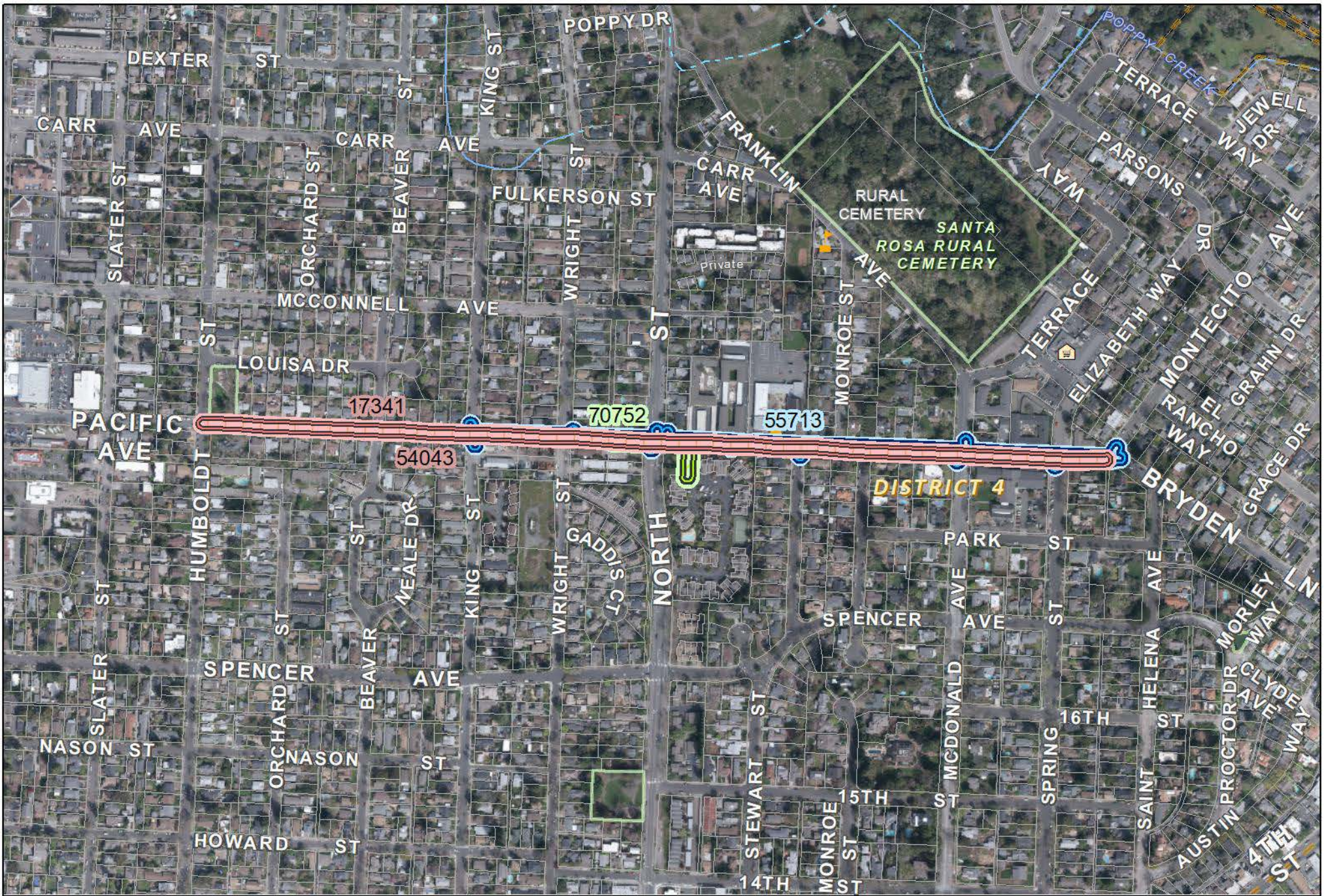
continue during the project. Potential road closures to through traffic may occur M-F between the hours of 8:00am-5:00pm. Please feel free to contact me at (707)543-3909 (or e-mail at LWelsh@srcity.org) or my supervisor Dave Montague at DMontague@srcity.org if you have any questions or concerns.

We will update you with another letter approximately two weeks prior to the start of construction. In addition to written communications like this, the City has created a special website where you can track the progress of this project. Simply go to www.srcity.org/CIP, view the map, and click on the blue map pin that corresponds to this project. You can also view the list of all Capital Improvement Program projects and find this project under Project ID No: 0661.

Sincerely,

A handwritten signature in black ink, appearing to read "Lisa Welsh". The signature is fluid and cursive, written over a light blue horizontal line.

LISA WELSH
Associate Civil Engineer



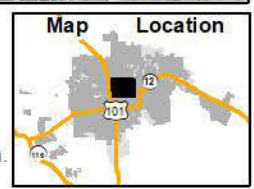
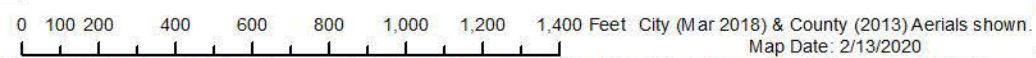
Project Number: 661

Pacific Ave Reconstruction - Humboldt St to Montecito Ave

Project Status: Design

Project Areas (IFAS Charge #'s Labeled)

- Public Works
- Water
- Sewer



- Information and features shown on this map are intended for general location use only and may contain errors. Map produced by City of Santa Rosa, Asset Management Division. -