



July 29, 2019

FRANKLIN AVENUE PEDESTRIAN PATH

Dear Residents:

The City of Santa Rosa is contracting with Siri Grading & Paving, Inc. for construction of the above referenced project. Construction will begin in August 2019 and last approximately 4 weeks. This project will construct a pedestrian pathway on the west side of Franklin Avenue between Monroe Avenue and Terrace Way. A pedestrian crossing from Terrace Way across Franklin Avenue will be installed along with ADA ramp upgrades. (See reverse for Project Limits).

Completion of this project is vital to the integrity of our community infrastructure. Some of the benefits this project will bring to your neighborhood include:

- Pedestrian pathway
- Pedestrian crossing
- Replacement of failed storm drain inlet

Though temporary impacts to your neighborhood are inevitable, our goal is to improve our community infrastructure without creating any more disturbance than necessary. The Contractor will be advised that daily and weekly activities such as mail delivery and garbage service must continue during the project. If you have special needs regarding access, or if you have any questions or concerns, please contact the Construction Manager at the following number:

Jason Balatti, Construction Manager

(707) 889-6678, Cell

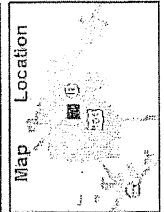
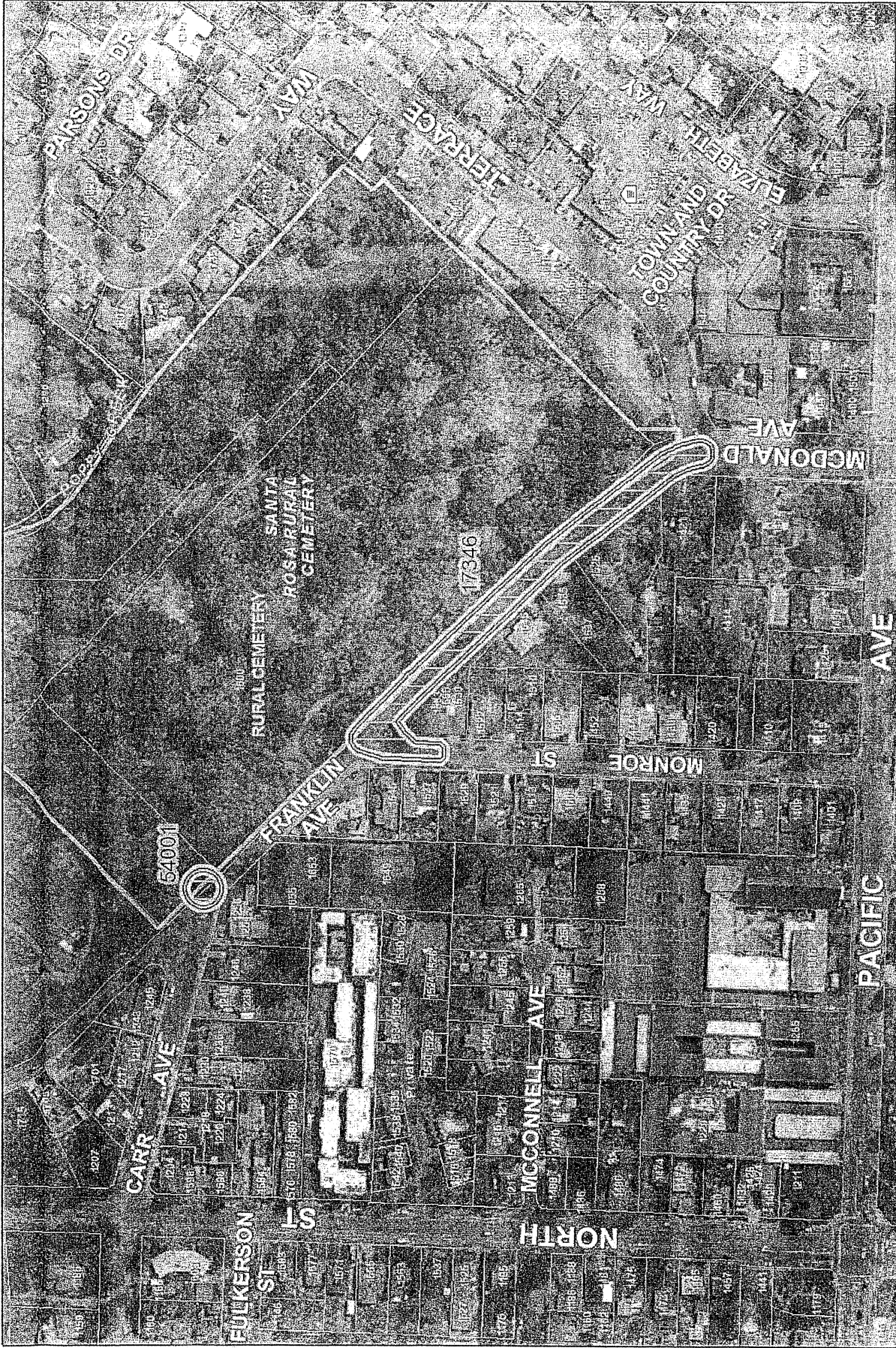
If you are aware of other occupants on your property who may not receive this notice, please share this notice with them or contact me with their address and I will notify them directly.

In addition to written communications like this, the City has created a special website where you can track the progress of this project. Simply go to www.srcity.org/CIP, view the map, and click on the blue map pin that corresponds to this project. You can also view the list of all Capital Improvement Program projects and find this project under Project ID No: 0779.

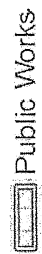
The City values your feedback. Please tell us how we did in your neighborhood by completing a post-construction survey. The survey will be delivered by a City representative to homes and businesses in close proximity to the construction site upon completion of this project. You may also access the survey online at www.srcity.org/construction.

Sincerely,

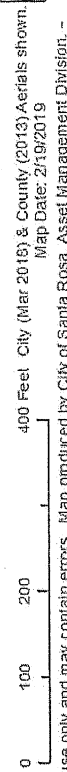
GREGORY DWYER
Associate Civil Engineer



Project Areas (IFAS Charge #'s Labeled)



Public Works



Project Number: 779

Franklin Avenue Pedestrian Path

Project Status: Design

-Information and features shown on this map are intended for general location use only and may contain errors. Map produced by City of Santa Rosa, Asset Management Division. -